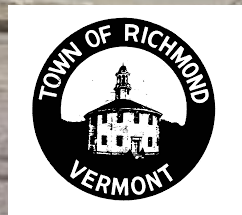




Bridge Street Corridor Study

Selectboard Meeting

June 21, 2021



Agenda



Review Study Area



Purpose & Need Statement



Project Process

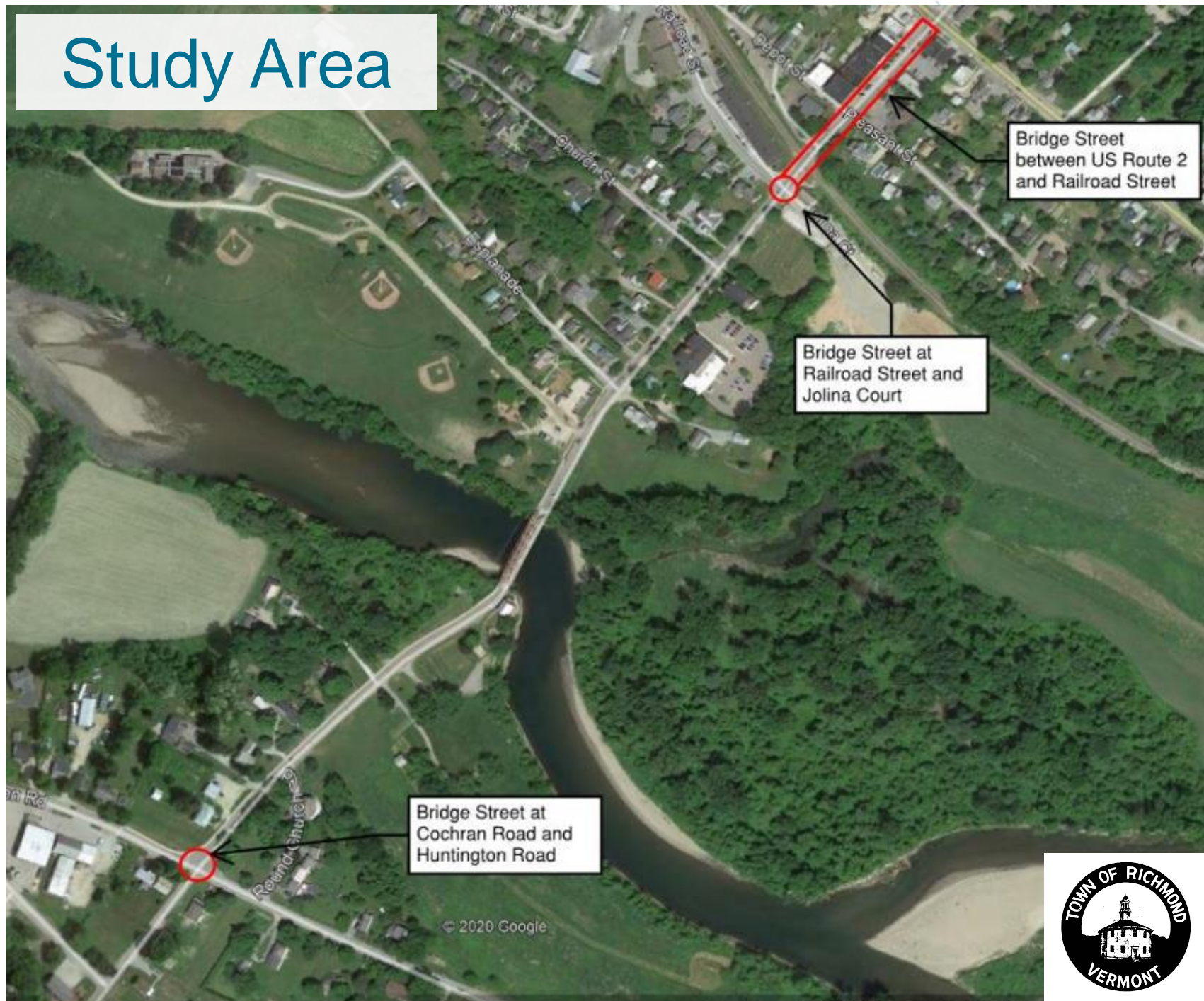


Preferred Alternatives



Next Steps

Study Area



Project Purpose and Need Statement

Excerpt from Project Purpose

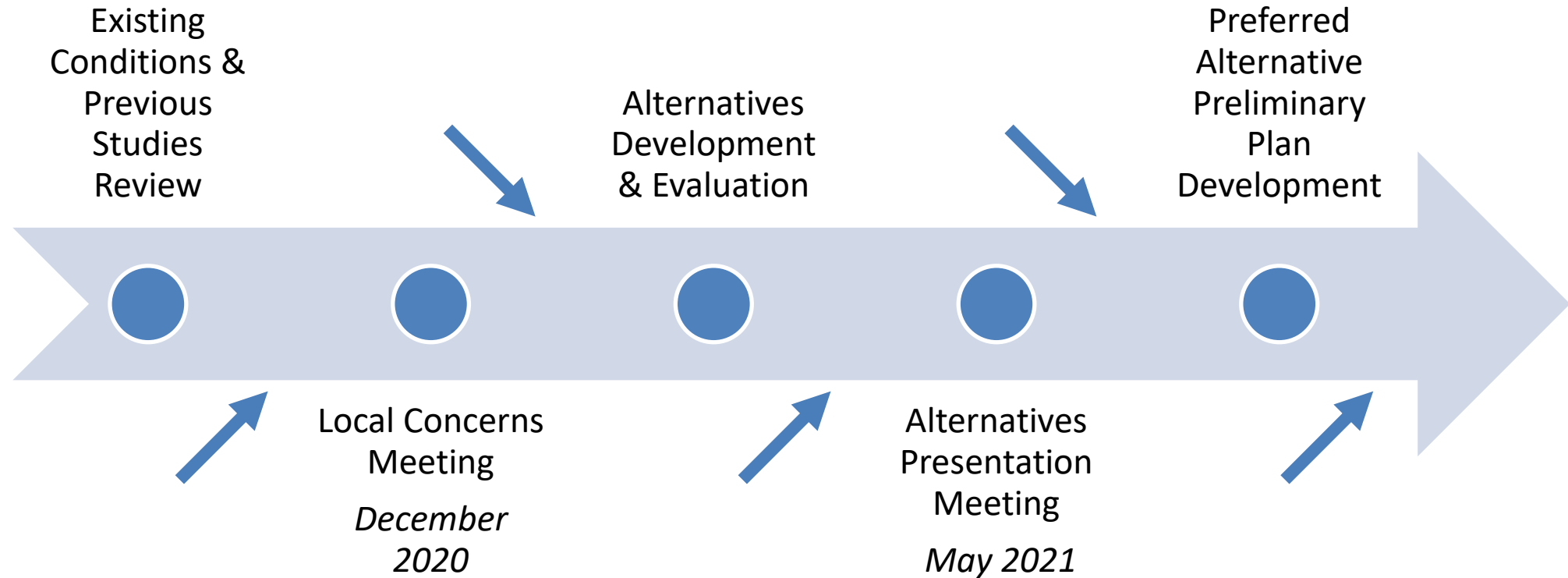
- To **identify** and **prioritize improvements** to create a **multimodal corridor** through the Richmond Village Center that **better accommodates pedestrians and bicyclists where critical infrastructure gaps exist.**

Project Needs

- **Enhance mobility for pedestrians and bicyclists**
 - Critical gaps in existing infrastructure
- **Improve safety for pedestrians and bicyclists**
 - Lack of delineated space for pedestrians and bicyclists requiring shared space with vehicle traffic
- **Maintain parking in support of businesses**
 - Convenient, on-street parking linked to vitality of businesses



Project Process



Transportation Committee & Project Team Input



Draft Preliminary Plans of Preferred Alternatives

INDEX OF SHEETS

- 1 TITLE SHEET
- 2 CONVENTIONAL SYMBOLLOGY LEGEND SHEET
- 3 PROJECT NOTES
- 4 TYPICAL SECTIONS SHEET
- 5 DETAILS SHEET
- 6-7 QUANTITY SUMMARY SHEETS
- 8-9 ALIGNMENT DATA SHEETS
- 10-13 GENERAL LAYOUT SHEETS
- 14-17 SIGNING AND PAVEMENT MARKING SHEETS
- 18-22 CROSS SECTIONS SHEETS
- 23 TRAFFIC CONTROL NARRATIVE SHEET

VAOT STANDARDS

C-2B	PORTLAND CEMENT CONCRETE SIDEWALK DRIVE ENTRANCES WITH SIDEWALK AND GREEN STRIP	10-14-2005
C-3A	SIDEWALK RAMPS	04-07-2020
C-3B	SIDEWALK RAMPS AND MEDIAN ISLANDS	04-07-2020
C-10	CURBING	02-8-2008
E-121	STANDARD SIGN PLACEMENT - CONVENTIONAL ROAD	08-08-1995
E-191	PAVEMENT MARKING DETAILS	02-01-1999
E-192	PAVEMENT MARKING DETAILS	10-12-2000
E-193	PAVEMENT MARKING DETAILS	08-18-1995
T-1	TRAFFIC CONTROL GENERAL NOTES	04-25-2016
T-2	TRAFFIC SIGN GENERAL NOTES	04-25-2016
T-10	CONVENTIONAL ROADS CONSTRUCTION APPROACH SIGNING	08-06-2012
T-28	CONSTRUCTION SIGN DETAILS	08-06-2012
T-30	CONSTRUCTION SIGN DETAILS	08-06-2012
T-45	SQUARE TUBE SIGN POST AND ANCHOR	01-02-2013
T-56	STANDARD SIGN PLACEMENT	10-26-2015

TOWN OF RICHMOND

COUNTY OF CHITTENDEN

PROPOSED IMPROVEMENTS

BRIDGE STREET

IMPROVEMENT PROJECT

PROJECT LOCATION: THE PROJECT IS LOCATED ON BRIDGE STREET IN RICHMOND, VT FROM ITS INTERSECTION WITH US ROUTE 2 TO RAILROAD STREET.

PROJECT DESCRIPTION: WORK TO BE PERFORMED UNDER THIS PROJECT INCLUDES NEW SIDEWALKS, NEW CROSSWALKS, A NEW RETAINING WALL, NEW PAVEMENT MARKINGS AND SIGNAGE, AND OTHER INCIDENTAL ITEMS.

SCALE IN FEET: 0 1000 2000

RAILROAD STREET
JOLINA COURT
PLEASANT STREET
DEPOT STREET
BRIDGE STREET
US ROUTE 2

SCALE IN FEET: 60 0 60

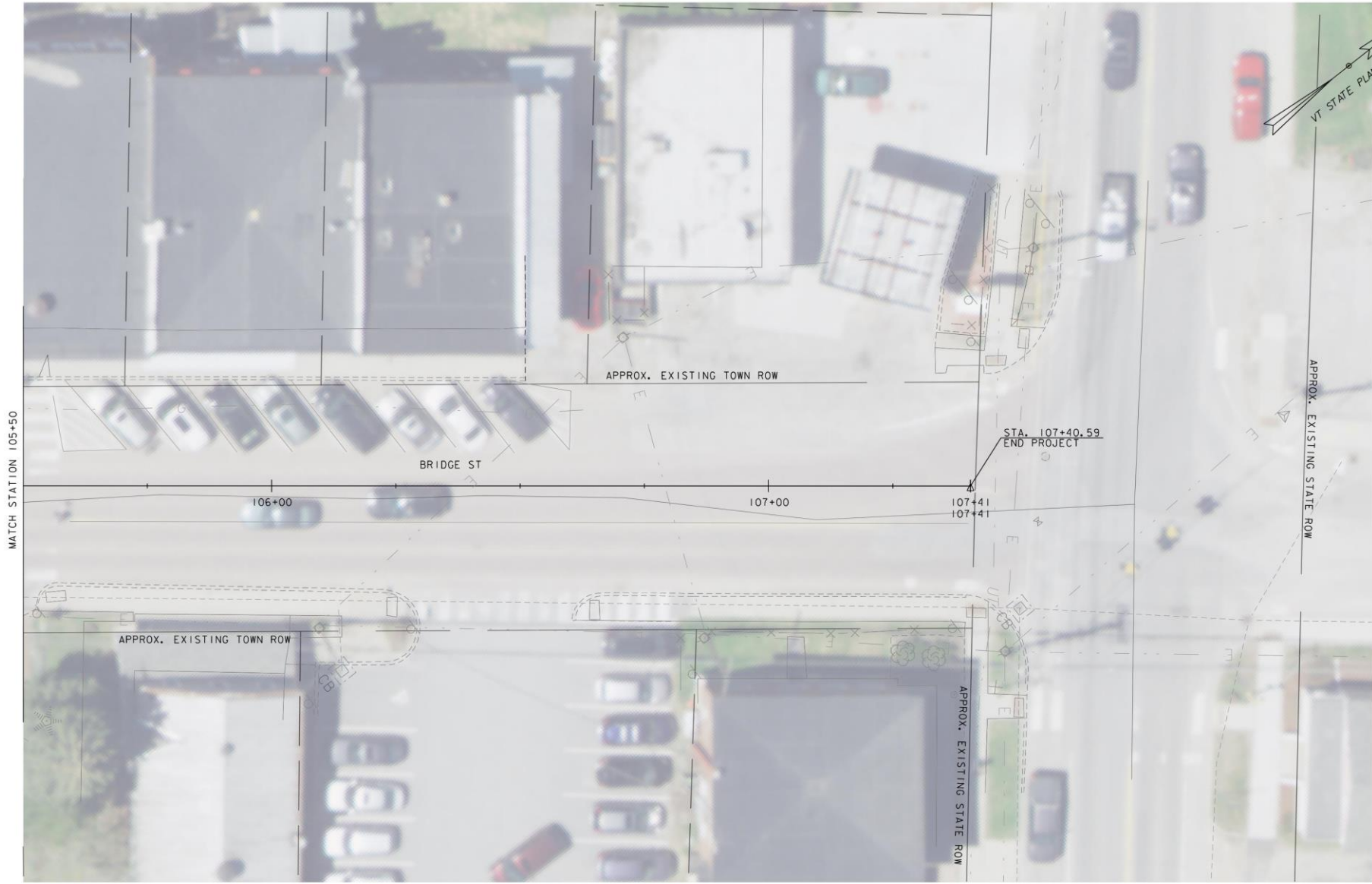
PRELIMINARY PLANS
JUNE 2021

NOTE THAT THIS PROJECT ASSUMES THAT THE STORMWATER INFRASTRUCTURE IMPROVEMENTS AND RELOCATIONS WILL OCCUR IN CONCURRENCE WITH OR BEFORE THIS PROJECT. THE STORMWATER INFRASTRUCTURE IMPROVEMENTS ARE NOT INCLUDED IN THIS PLAN PACKAGE AND ARE PART OF A SEPARATE CONTRACT.

PROJECT MANAGER : J. A. CONLEY
PROJECT NAME : BRIDGE STREET
PROJECT NUMBER : 58538.00
SHEET 1 OF 23 SHEETS

SURVEYED BY : VHB
SURVEYED DATE : 2021

DATUM
VERTICAL: NAVD 1988
HORIZONTAL: NAD 1983



MATCH STATION 105+50

106+00

107+00

107+41
107+41

BRIDGE ST

APPROX. EXISTING TOWN ROW

STA. 107+40.59
END PROJECT

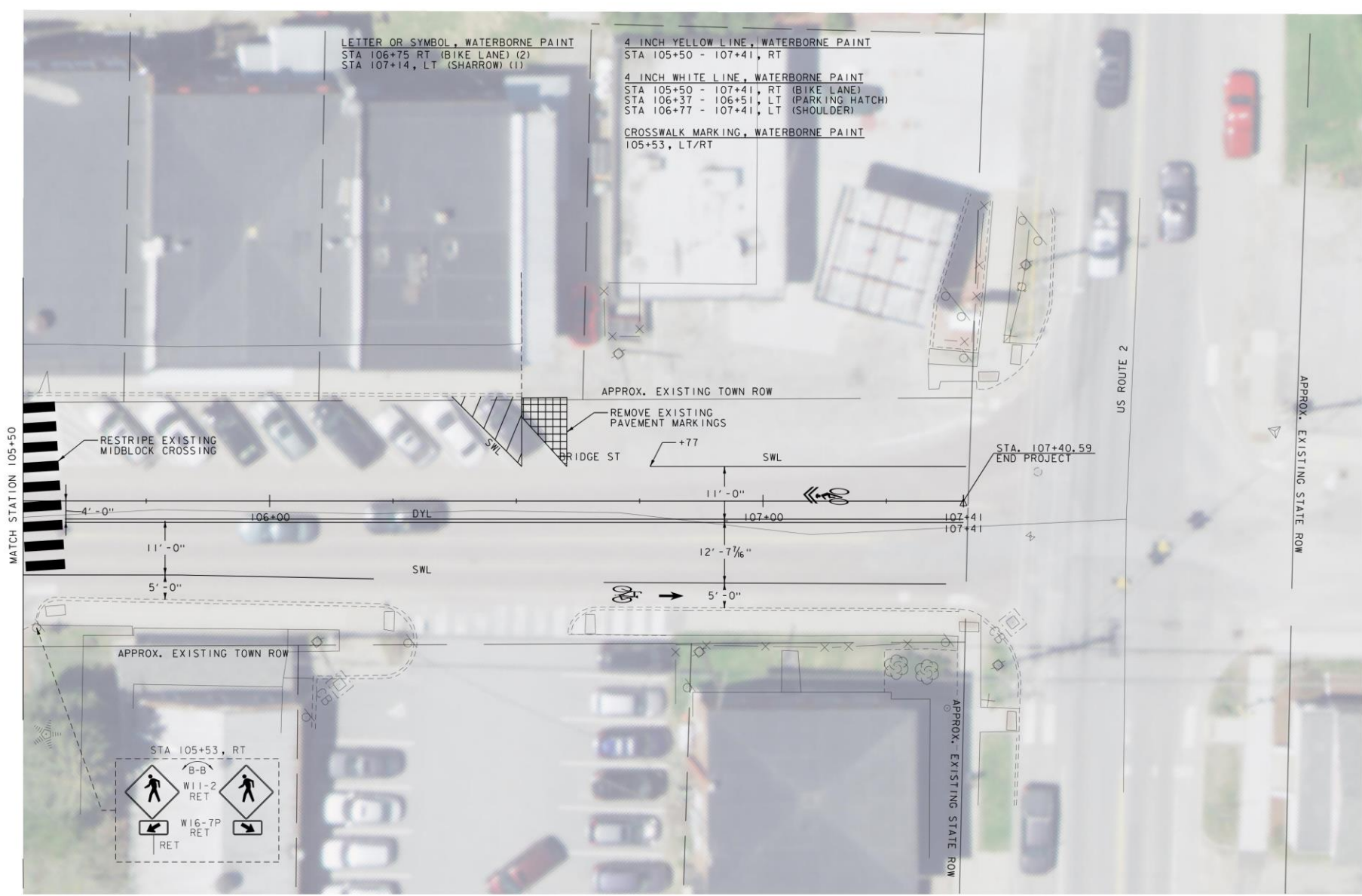
APPROX. EXISTING STATE ROW

APPROX. EXISTING TOWN ROW

APPROX. EXISTING STATE ROW



PROJECT NAME:	BRIDGE STREET	PLOT DATE:	6/17/2021
PROJECT NUMBER:	58538.00	DRAWN BY:	C.K.FORD
FILE NAME:	z58538_bdr_nul.dgn	CHECKED BY:	K.M.SENTOFF
PROJECT LEADER:	J.A.CONLEY	DESIGNED BY:	C.K.FORD
DESIGNED BY:	C.K.FORD	GENERAL LAYOUT (SHEET 3 OF 4)	SHEET 12 OF 23

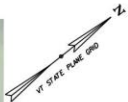


LETTER OR SYMBOL, WATERBORNE PAINT
 STA 106+75 RT (BIKE LANE) (2)
 STA 107+14, LT (SHARROW) (1)

4 INCH YELLOW LINE, WATERBORNE PAINT
 STA 105+50 - 107+41, RT

4 INCH WHITE LINE, WATERBORNE PAINT
 STA 105+50 - 107+41, RT (BIKE LANE)
 STA 106+37 - 106+51, LT (PARKING HATCH)
 STA 106+77 - 107+41, LT (SHOULDER)

CROSSWALK MARKING, WATERBORNE PAINT
 105+53, LT/RT



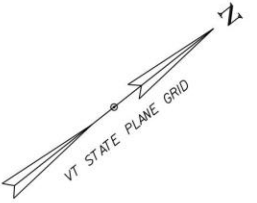
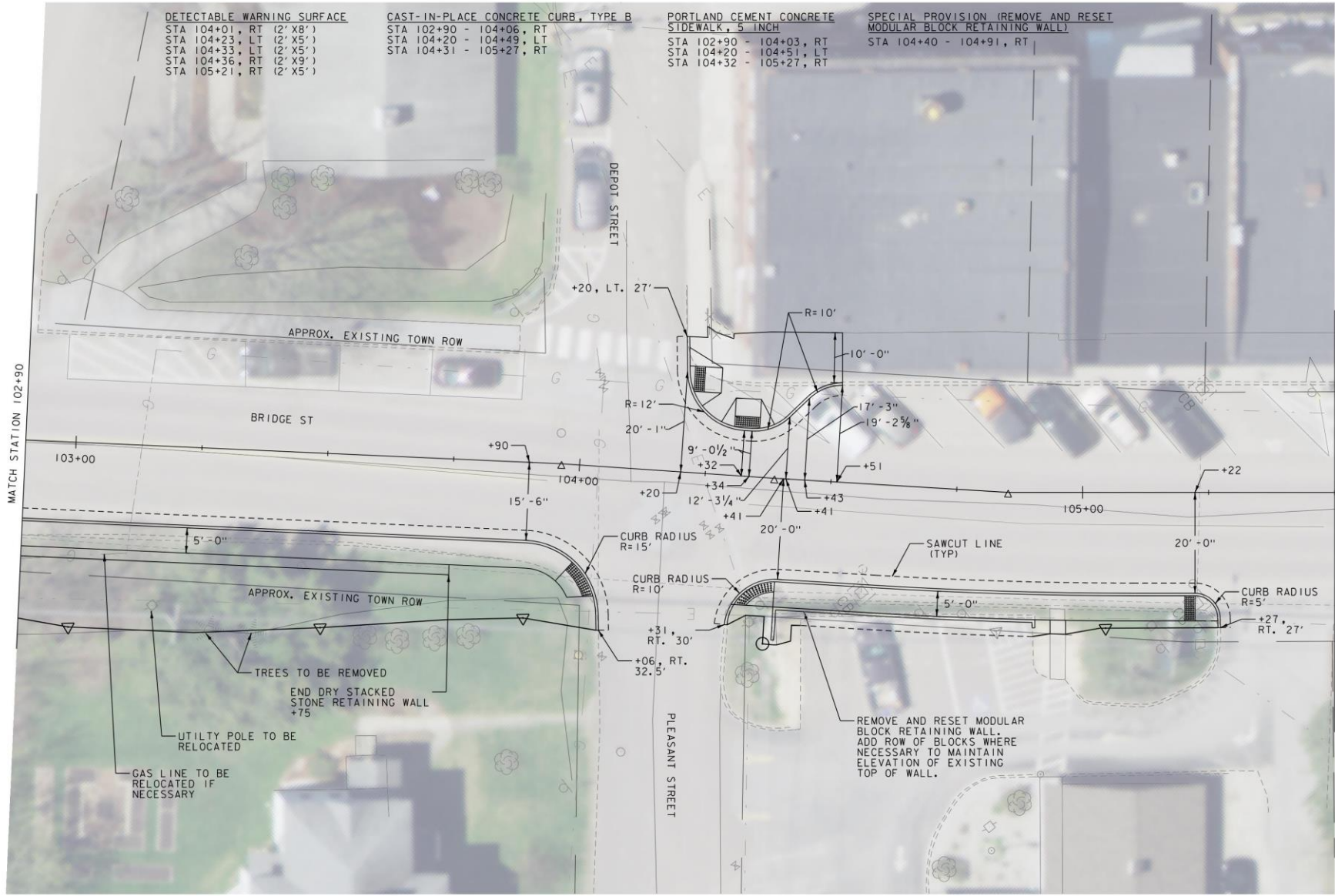
SIGN LEGEND
 R&R = REMOVE AND RESET
 RET = RETAIN
 N = NEW

PAVEMENT MARKING LEGEND
 SWL = SINGLE WHITE LINE
 SDWL = SINGLE DASHED WHITE LINE
 DYL = DOUBLE YELLOW LINE
 SDYL = SINGLE DASHED YELLOW LINE

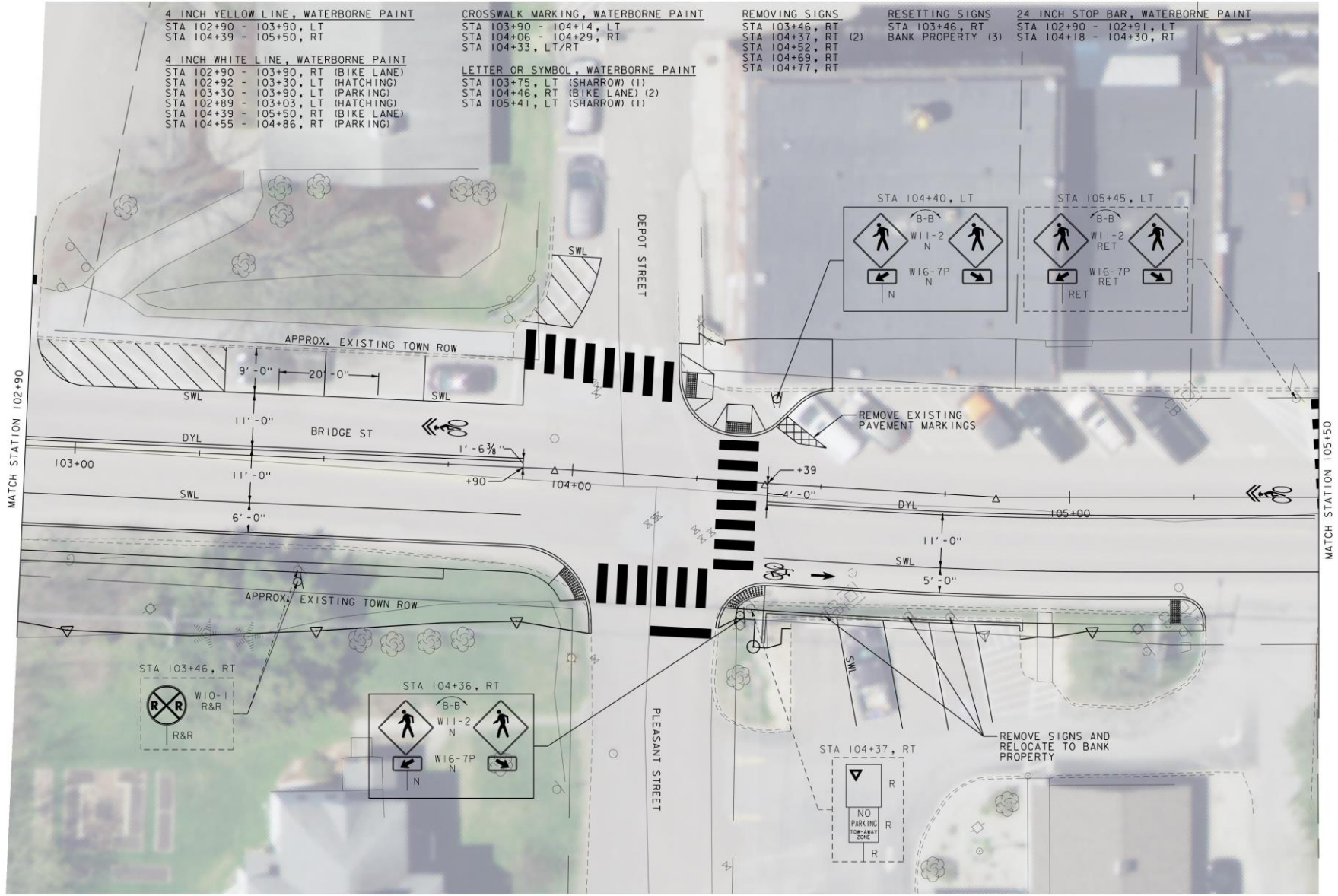


PROJECT NAME:	BRIDGE STREET
PROJECT NUMBER:	58538.00
FILE NAME:	z58538_bdr_spm.dgn
PROJECT LEADER:	J.A.CONLEY
DESIGNED BY:	C.K.FORD
PLOT DATE:	6/17/2021
DRAWN BY:	C.K.FORD
CHECKED BY:	K.M.SENTOFF
SIGNS & PAVEMENT MARKINGS SHEET (3 OF 4) SHEET 16 OF 23	





PROJECT NAME:	BRIDGE STREET	FILE NAME:	z58538_bdr_nul.dgn	PLOT DATE:	6/17/2021
PROJECT NUMBER:	58538.00	PROJECT LEADER:	J.A.CONLEY	DRAWN BY:	C.K.FORD
		DESIGNED BY:	C.K.FORD	CHECKED BY:	K.M.SENTOFF
		GENERAL LAYOUT (SHEET 2 OF 4)		SHEET	11 OF 23



4 INCH YELLOW LINE, WATERBORNE PAINT
 STA 102+90 - 103+90, LT
 STA 104+39 - 105+50, RT

4 INCH WHITE LINE, WATERBORNE PAINT
 STA 102+90 - 103+90, RT (BIKE LANE)
 STA 102+92 - 103+30, LT (HATCHING)
 STA 103+30 - 103+90, LT (PARKING)
 STA 102+89 - 103+03, LT (HATCHING)
 STA 104+39 - 105+50, RT (BIKE LANE)
 STA 104+55 - 104+86, RT (PARKING)

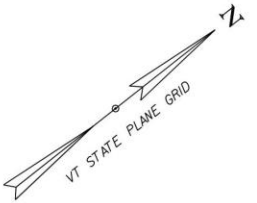
CROSSWALK MARKING, WATERBORNE PAINT
 STA 103+90 - 104+14, LT
 STA 104+06 - 104+29, RT
 STA 104+33, LT/RT

LETTER OR SYMBOL, WATERBORNE PAINT
 STA 103+75, LT (SHARROW) (1)
 STA 104+46, RT (BIKE LANE) (2)
 STA 105+41, LT (SHARROW) (1)

REMOVING SIGNS
 STA 103+46, RT
 STA 104+37, RT (2)
 STA 104+52, RT
 STA 104+69, RT
 STA 104+77, RT

RESETTING SIGNS
 STA 103+46, RT
 BANK PROPERTY (3)

24 INCH STOP BAR, WATERBORNE PAINT
 STA 102+90 - 102+91, LT
 STA 104+18 - 104+30, RT



MATCH STATION 102+90

MATCH STATION 105+50

SIGN LEGEND
 R&R = REMOVE AND RESET
 RET = RETAIN
 N = NEW

PAVEMENT MARKING LEGEND
 SWL = SINGLE WHITE LINE
 SDWL = SINGLE DASHED WHITE LINE
 DYL = DOUBLE YELLOW LINE
 SDYL = SINGLE DASHED YELLOW LINE



PROJECT NAME: BRIDGE STREET
 PROJECT NUMBER: 58538.00

FILE NAME: z58538_bdr_spm.dgn PLOT DATE: 6/17/2021
 PROJECT LEADER: J.A.CONLEY DRAWN BY: C.K.FORD
 DESIGNED BY: C.K.FORD CHECKED BY: K.M.SENTOFF
 SIGNS & PAVEMENT MARKINGS SHEET (2 OF 4) SHEET 15 OF 23

DETECTABLE WARNING SURFACE
 STA 101+02, RT (2' X 10')
 STA 101+03, LT (2' X 5')
 STA 101+15, LT (2' X 5')
 STA 101+44, RT (2' X 8')
 STA 101+69, LT (2' X 5')
 STA 102+12, RT (2' X 5')
 STA 102+20, LT (2' X 5')
 STA 102+49, RT (2' X 5')
 STA 102+56, LT (2' X 4')
 STA 102+62, LT (2' X 5')

PORTLAND CEMENT CONCRETE SIDEWALK, 5 INCH
 STA 100+91 - 101+18, LT
 STA 100+97 - 101+07, RT
 STA 101+39 - 101+62, RT
 STA 101+87 - 101+87, RT
 STA 101+48 - 102+21, LT
 STA 102+48 - 102+90, RT
 STA 102+55 - 102+68, LT

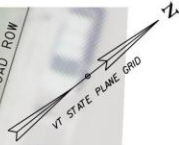
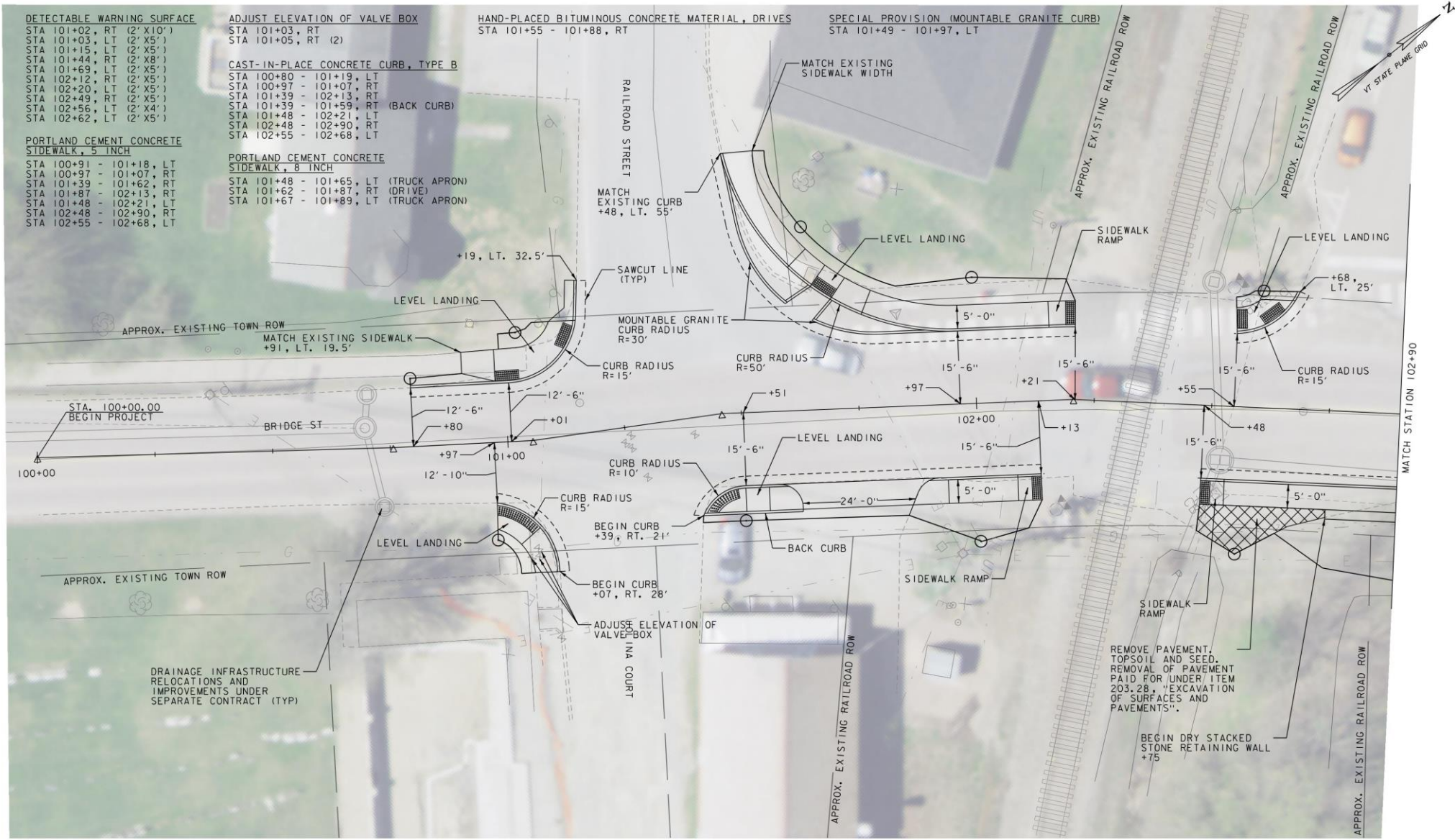
ADJUST ELEVATION OF VALVE BOX
 STA 101+03, RT
 STA 101+05, RT (2)

CAST-IN-PLACE CONCRETE CURB, TYPE B
 STA 100+80 - 101+19, LT
 STA 100+97 - 101+07, RT
 STA 101+39 - 102+13, RT
 STA 101+39 - 101+59, RT (BACK CURB)
 STA 101+48 - 102+21, LT
 STA 102+48 - 102+90, LT
 STA 102+55 - 102+68, LT

PORTLAND CEMENT CONCRETE SIDEWALK, 8 INCH
 STA 101+48 - 101+65, LT (TRUCK APRON)
 STA 101+62 - 101+87, RT (DRIVE)
 STA 101+67 - 101+89, LT (TRUCK APRON)

HAND-PLACED BITUMINOUS CONCRETE MATERIAL, DRIVES
 STA 101+55 - 101+88, RT

SPECIAL PROVISION (MOUNTABLE GRANITE CURB)
 STA 101+49 - 101+97, LT



STA. 100+00.00
 BEGIN PROJECT

BRIDGE ST

APPROX. EXISTING TOWN ROW

DRAINAGE INFRASTRUCTURE
 RELOCATIONS AND
 IMPROVEMENTS UNDER
 SEPARATE CONTRACT (TYP)

ADJUST ELEVATION OF
 VALVE BOX

REMOVE PAVEMENT,
 TOPSOIL AND SEED.
 REMOVAL OF PAVEMENT
 PAID FOR UNDER ITEM
 203.28, "EXCAVATION
 OF SURFACES AND
 PAVEMENTS".

BEGIN DRY STACKED
 STONE RETAINING WALL
 +75



PROJECT NAME:	BRIDGE STREET
PROJECT NUMBER:	58538.00
FILE NAME:	z58538_bdr_nul.dgn
PROJECT LEADER:	J.A.CONLEY
DESIGNED BY:	C.K.FORD
GENERAL LAYOUT (SHEET 1 OF 4)	
PLOT DATE:	6/17/2021
DRAWN BY:	C.K.FORD
CHECKED BY:	K.M.SENTOFF
SHEET	10 OF 23

4 INCH WHITE LINE, WATERBORNE PAINT
 STA 101+62 - 102+90, RT (BIKE LANE)
 STA 101+66 - 102+63, LT (SHOULDER)

4 INCH YELLOW LINE, WATERBORNE PAINT
 STA 100+00 - 100+95, BL
 STA 101+62 - 102+90, LT

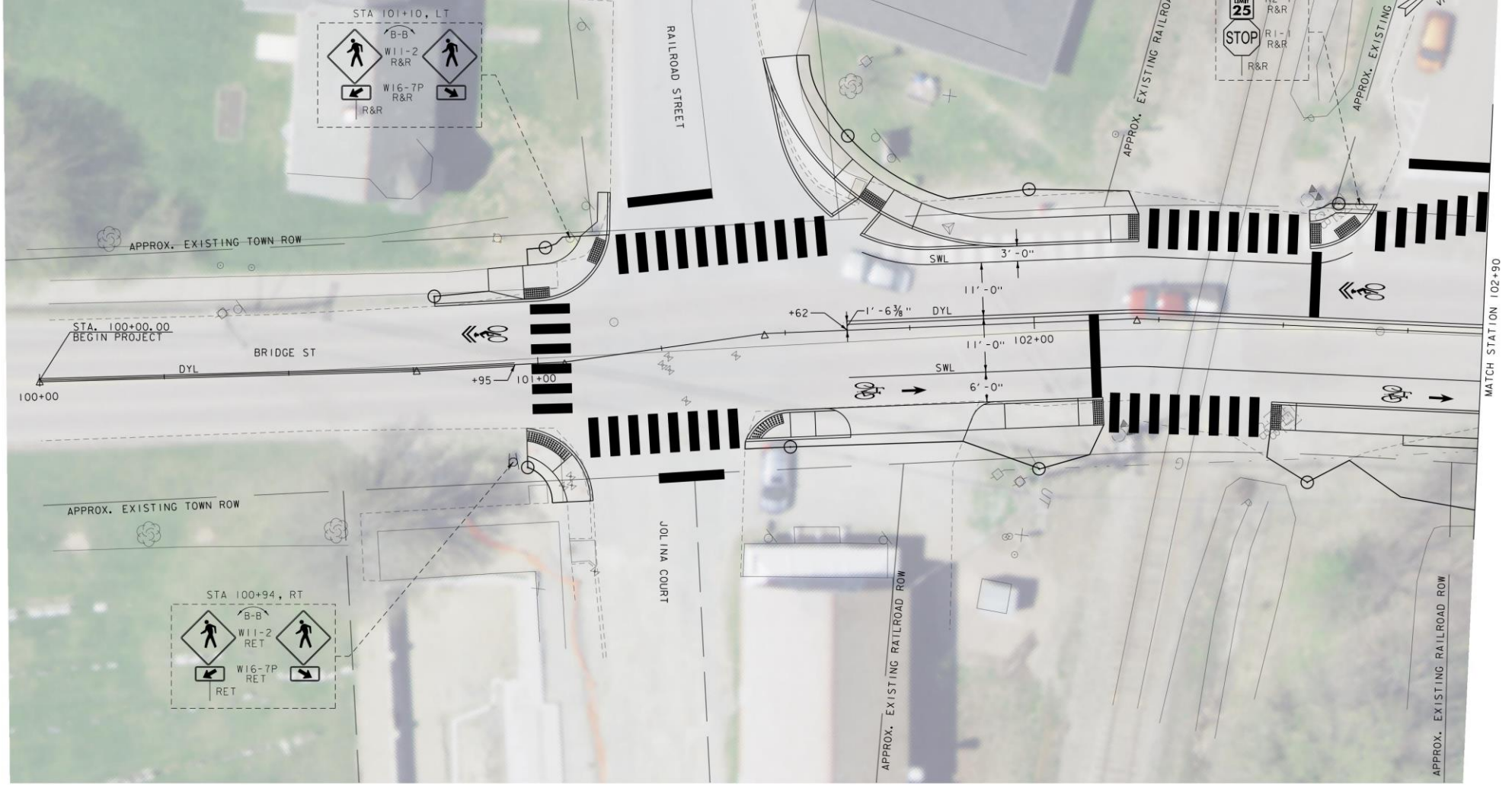
LETTER OR SYMBOL, WATERBORNE PAINT
 STA 100+90, LT (SHARROW) (1)
 STA 101+71, RT (BIKE LANE) (2)
 STA 102+66, LT (SHARROW) (1)
 STA 102+77, RT (BIKE LANE) (2)

24 INCH STOP BAR, WATERBORNE PAINT
 STA 101+21 - 101+34, RT
 STA 101+22 - 101+40, LT
 STA 102+12, RT
 STA 102+55, LT
 STA 102+74 - 102+90, LT

CROSSWALK MARKING, WATERBORNE PAINT
 STA 101+03, LT/RT
 STA 101+08 - 101+38, RT
 STA 101+19 - 101+59, LT
 STA 102+14 - 102+46, RT
 STA 102+22 - 102+53, LT
 STA 102+68 - 102+90, LT

REMOVING SIGNS
 STA 100+94, RT (2)
 STA 101+10, LT (2)
 STA 102+64, LT (2)

RESETTING SIGNS
 STA 100+94, RT (2)
 STA 101+10, LT (2)
 STA 102+64, LT (2)



SIGN LEGEND
 R&R = REMOVE AND RESET
 RET = RETAIN
 N = NEW

PAVEMENT MARKING LEGEND
 SWL = SINGLE WHITE LINE
 SDWL = SINGLE DASHED WHITE LINE
 DYL = DOUBLE YELLOW LINE
 SDYL = SINGLE DASHED YELLOW LINE



PROJECT NAME: BRIDGE STREET
 PROJECT NUMBER: 58538.00

FILE NAME: z58538_bdr_spm.dgn PLOT DATE: 6/17/2021
 PROJECT LEADER: J.A.CONLEY DRAWN BY: C.K.FORD
 DESIGNED BY: C.K.FORD CHECKED BY: K.M.SENTOFF
 SIGNS & PAVEMENT MARKINGS SHEET (1 OF 4) SHEET 14 OF 23



DETECTABLE WARNING SURFACE

- STA 200+45, LT (2' X 5')
- STA 200+47, RT (2' X 5')
- STA 200+49, LT (2' X 5')
- STA 200+64, RT (2' X 5')
- STA 200+78, LT (2' X 5')
- STA 200+99, RT (2' X 5')
- STA 201+21, RT (2' X 5')
- STA 201+21, LT (2' X 5')

PORTLAND CEMENT CONCRETE SIDEWALK, 5 INCH

- STA 200+42 - 200+51, LT
- STA 200+44 - 200+65, RT
- STA 200+67 - 200+78, LT
- STA 200+76 - 200+96, LT
- STA 200+97 - 201+25, RT
- STA 201+11 - 201+30, LT

ADJUST ELEVATION OF VALVE BOX

- STA 201+49, RT

CAST-IN-PLACE CONCRETE CURB, TYPE B

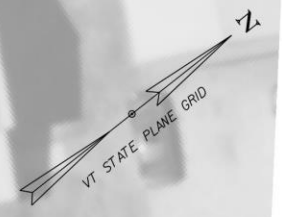
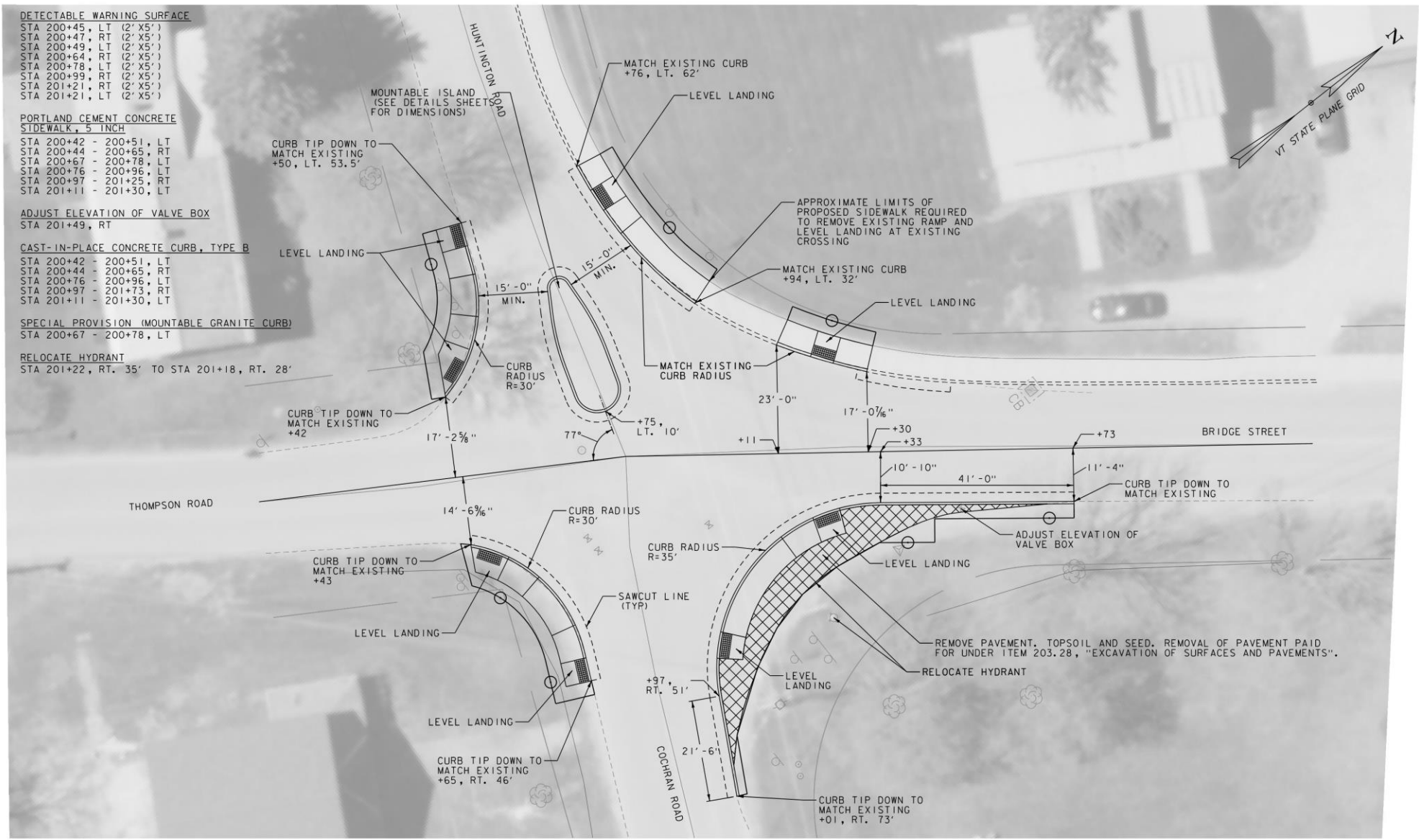
- STA 200+42 - 200+51, LT
- STA 200+44 - 200+65, RT
- STA 200+76 - 200+96, LT
- STA 200+97 - 201+73, RT
- STA 201+11 - 201+30, LT

SPECIAL PROVISION (MOUNTABLE GRANITE CURB)

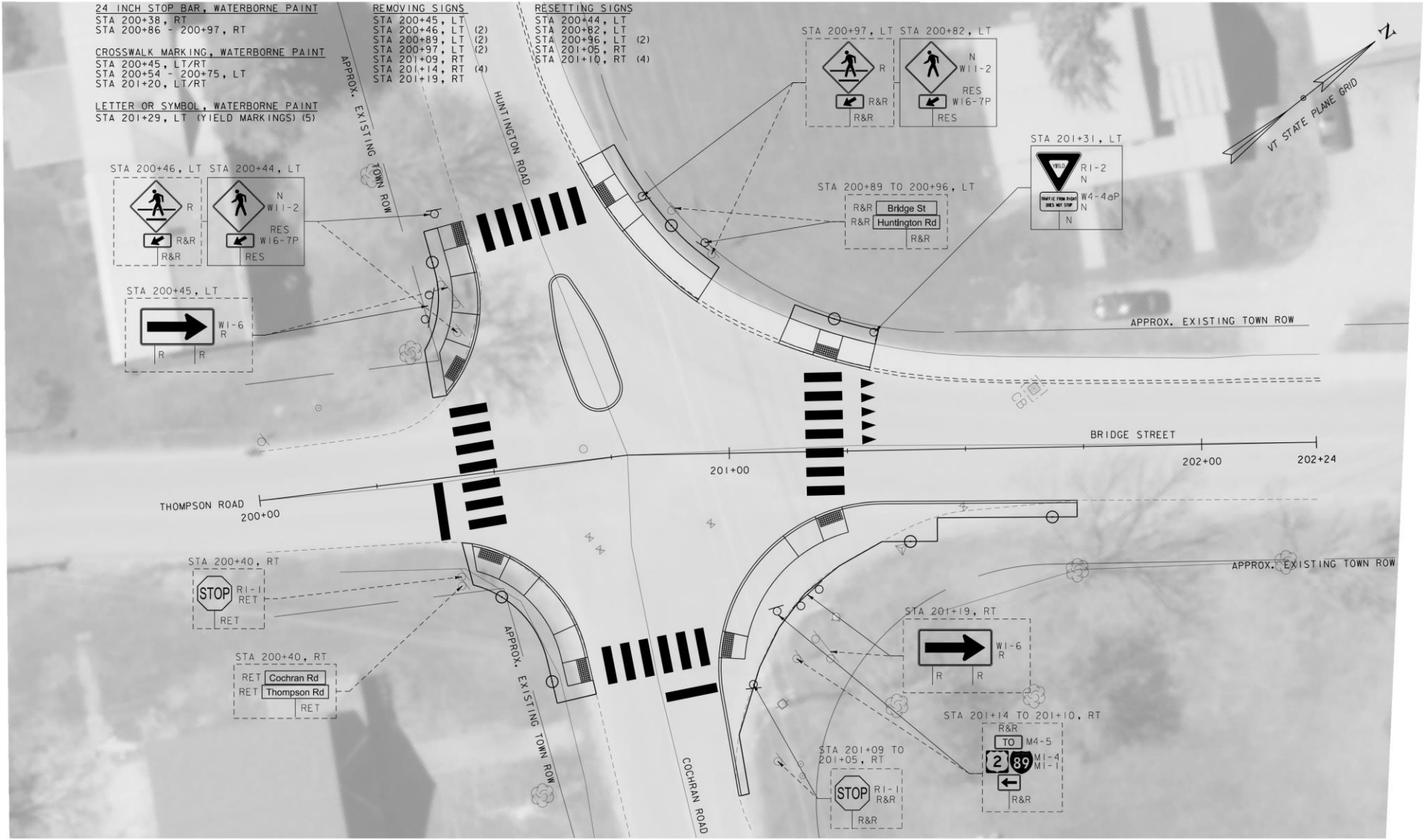
- STA 200+67 - 200+78, LT

RELOCATE HYDRANT

- STA 201+22, RT, 35' TO STA 201+18, RT, 28'



PROJECT NAME:	BRIDGE STREET	FILE NAME:	z58538_bdr_nul.dgn	PLOT DATE:	6/17/2021
PROJECT NUMBER:	58538.00	PROJECT LEADER:	J.A.CONLEY	DRAWN BY:	C.K.FORD
		DESIGNED BY:	C.K.FORD	CHECKED BY:	K.M.SENTOFF
		GENERAL LAYOUT (SHEET 4 OF 4)		SHEET	13 OF 23



SIGN LEGEND
 R&R = REMOVE AND RESET
 RET = RETAIN
 N = NEW

PROJECT NAME:	BRIDGE STREET
PROJECT NUMBER:	58538.00
FILE NAME:	z58538_bdr_spm.dgn
PROJECT LEADER:	J.A.CONLEY
DESIGNED BY:	C.K.FORD
PLOT DATE:	6/17/2021
DRAWN BY:	C.K.FORD
CHECKED BY:	K.M.SENTOFF
SIGNS & PAVEMENT MARKINGS SHEET 14 OF 45 SHEET 17 OF 23	



Please Share Your Thoughts with Us



Jason Charest
Senior Transportation Planning Engineer

jcharest@ccrpcvt.org

Ravi Venkataraman
Town Planner

802-434-2430

rvenkataraman@richmondvt.gov

