

RIGHT - OF - WAY DETAIL SHEET

TABLE OF PROPERTY ACQUISITION

PARCEL NO.	PROPERTY OWNER	ROW LAYOUT NO.	BEGINNING STATION	ENDING STATION	FEE ACQUISITION AREA±	REMAINDER AREA±	RIGHT			RECORDING DATA					REMARKS	
							TYPE	T/P	AREA ±	TITLE	DATE	TOWN / CITY	BOOK	PAGE		
1	GLABICKY, DANIEL; GLABICKY, JANINA	1	258+45 LT	259+04 LT			CONSTRUCTION	T	325 SF						INCL. PDF	
			258+94 LT	259+25 LT			DRIVE	T	369 SF							
			259+14 LT	259+38 LT			CONSTRUCTION	T	185 SF							INCL. PDF
			259+22.04 LT	259+26.95 LT			REMOVE & REPLACE	T								MAILBOX
			259+25.00 LT	259+37.75 LT			DITCH	P	18 SF							
			259+35.85 LT	259+36.12 LT			INSTALL	T								PUSH BRACE
2	TOWN OF RICHMOND	1, 2	259+39± LT	259+92 LT			CONSTRUCTION	T	189 SF						INCL. PDF	
			259+66 LT	259+96 LT			SLOPE	T	133 SF						INCL. EC	
			259+92 LT	260+61 LT			DRIVE	T	527 SF							
			259+34± LT	260+83.25 LT			UTILITY	P	2,660 SF							
			259+36 LT				INSTALL	T								PUSH BRACE
			260+58 LT	260+83 LT			CONSTRUCTION	T	61 SF							INCL. PDF
			260+58 LT	260+84 LT			SLOPE	T	198 SF							INCL. EC
260+58.36 LT	260+84± LT			INSTALL & MAINTAIN	P	36 SF							INCL. DRAIN PIPE			
3	NOT USED														FORMERLY CV PROPERTIES INC.	
4	WARD, BARBARA J. & GEORGE C., LIFE ESTATE	3, 4	270+88.99 LT	272+84.67	3,870 SF											
			270+73 LT	271+75 LT			CONSTRUCTION	T	810 SF							INCL. PDF
			270+75 LT	271+25 LT			SLOPE	T	210 SF							INCL. EC
			270+77 LT	271+15 LT			DITCH	P								INCL. STONE FILL
			270+93 LT				DRAINAGE	P								
			271+24 LT				DISCONNECT & CONNECT	T								UNDERGROUND UTILITY LINES
			271+24 LT	272+97± LT			DRIVE	T	0.23 A							9.848 SF±
			271+48.82 LT													MONITOR WELL W-1
			271+96 LT	272+39 LT			INSTALL	T	226 SF							PDF
			272+31 LT	272+99± LT			INSTALL	T	312 SF							PDF
			272+62.13 LT	272+91.86 LT			REMOVE & REPLACE	T								MAILBOX #595/597
272+75.62 LT				ALL R.T. & I.									CAPPED IRON PIN			
5	DYER, MATTHEW A. & CHADWICK, HEATHER L.	4	272+75.62 LT				ALL R.T. & I.								CAPPED IRON PIN	
			272+85± LT	273+32 LT			SLOPE	T	252 SF						INCL. EC	
			272+92± LT	273+57 LT			CONSTRUCTION	T	195 SF						INCL. PDF	
			275+53 LT	276+15 LT			CONSTRUCTION	T	367 SF						INCL. PDF	
			275+68.29 LT	276+05.94 LT			CULVERT	P	105 SF						INCL. STONE FILL	
6	LEGERE, SHANNON S.	4	273+59.64 RT												MONITOR WELL W-2	
			273+75.60 RT	273+75.00 RT			REMOVE & REPLACE	T							MAILBOX #624	
			273+88 RT	273+94 RT			INSTALL	T	12 SF						INCL. PDF & EC; WALKWAY 5' PAVED	
			274+58 RT	275+00 RT			DRIVE	T	236 SF						PAVED	
			274+87 RT	275+56 RT			CONSTRUCTION	T	399 SF						INCL. PDF & EC	
			275+25 RT	275+66± RT			SLOPE	T	412 SF						INCL. EC	
			275+30.92 RT	275+77± RT			CULVERT	P	278 SF						INCL. STONE FILL & DRAINAGE PIPE	
275+60.06 RT				DRAINAGE	P											
7	GARRIS, JAMES J.; HAMPTON, MICHAEL J. joined by RICHMOND LAND TRUST	4	275+54± RT	275+78± RT			CONSTRUCTION	T	53 SF						INCL. PDF & EC	
			275+56± RT	275+78± RT			SLOPE	T	271 SF						INCL. EC	
			275+77.27				REMOVE & RESET	T							IRON PIN, UNCAPPED	

TABLE OF REVISIONS

REVISION NO.	ROW SET SHEET #	DESCRIPTION	DATE
1	3, 7-8	PARCEL 4 - WARD, BARBARA J. & GEORGE C., LIFE ESTATE; HILL, BETH P., LIFE ESTATE REMOVE BETH P. HILL FROM PROPERTY OWNER DUE TO DEATH. REV BY: MT CO 10598 APPR BY: AP	02/25/22
2	3, 6	PARCEL 3 - CV PROPERTIES INC. PARCEL NO LONGER AFFECTED. REV BY: MT CO 10614 APPR BY: AP	04/19/22
3	1, 3, 5	PARCEL 1 - GLABICKY DUE TO DESIGN CHANGE, BEGIN/END AND LENGTH OF ROW CHANGED ON TITLE; CHANGED CONSTRUCTION(T) BEGIN STA FROM 258+85 LT TO 258+45 LT AND AREA FROM 162 SF TO 325 SF; CHANGE DRIVE(T) END STA FROM 259+18 LT TO 259+25 LT, AREA FROM 367 SF TO 369 SF; ADD DITCH(P) STA 259+25.00 LT TO STA 259+37.75 LT AND AREA 18 SF; CHANGE CONSTRUCTION(T) END STA FROM 259+26 LT TO 259+38 LT; AREA FROM 148 SF TO 185 SF; ADD INSTALL(T) BEGIN STA 259+35.85 LT, END STA 259+36.12 LT AND REMARKS PUSH BRACE. REV BY: MT CO 10629 APPR BY: AP	06/22/22
4	3, 5	PARCEL 2 - TOWN OF RICHMOND ADD CONSTRUCTION(T) BEGIN STA 259+39± LT TO END STA 259+92 LT, AREA 189 SF; ADD SLOPE(T) BEGIN STA 259+66 LT TO END STA 259+96 LT, AREA 133 SF; ADD DRIVE(T) BEGIN STA 259+92 LT TO END STA 260+61 LT, AREA 527 SF; CHANGE CONSTRUCTION(T) BEGIN STA FROM 260+58 LT TO 260+61 LT AND AREA FROM 73 SF TO 61 SF; CHANGE SLOPE(T) BEGIN STA 260+59 LT TO 260+58 LT AND AREA FROM 213 SF TO 198 SF; ADD I&M(P) BEGIN STA 260+58.36 LT TO 260+84± LT, AREA 36 SF, REMARKS INCL DRAIN PIPE. REV BY: MT CO 10630 APPR BY: AP	06/22/22
5	3, 7-8	PARCEL 4 - WARD LIFE ESTATE CHANGE CONSTRUCTION(T) BEGIN STA FROM 270+87 LT TO 270+73 LT, END STA 271+88 LT TO 271+75 LT, AREA FROM 658 SF TO 810 SF; CHANGE SLOPE(T) BEGIN STA 270+90 LT TO 270+75 LT, END STA 271+10 LT TO 271+25 LT, AREA FROM 40 SF TO 210 SF; ADD DITCH(P) BEGIN STA 270+77 LT TO 271+15 LT, AREA 187 SF, REMARKS INCL. STONE FILL; ADD DRAIN(P) BEGIN STA 270+93 LT; CHANGE DRIVE(T) BEGIN STA FROM 271+35 LT TO 271+24 LT, END STATION FROM 272+92 TO 272+97± LT, AREA FROM 0.17 A TO 0.23 A, REMARKS FROM 7,339 SF± TO 9,848 SF±; CHANGE INSTALL(T) BEGIN STA FROM 271+95 LT TO 271+96 LT, AREA FROM 215 SF TO 226 SF; CHANGE INSTALL(T) BEGIN STA FROM 272+24 LT TO 272+31 LT, END STA FROM 272+94± TO 272+99± LT, AREA FROM 418 SF TO 312 SF; CHANGE REMOVE & REPLACE(T) END STA FROM 272+73.55 LT TO 272+91.86 LT. REV BY: MT CO 10631 APPR BY: AP	06/22/22

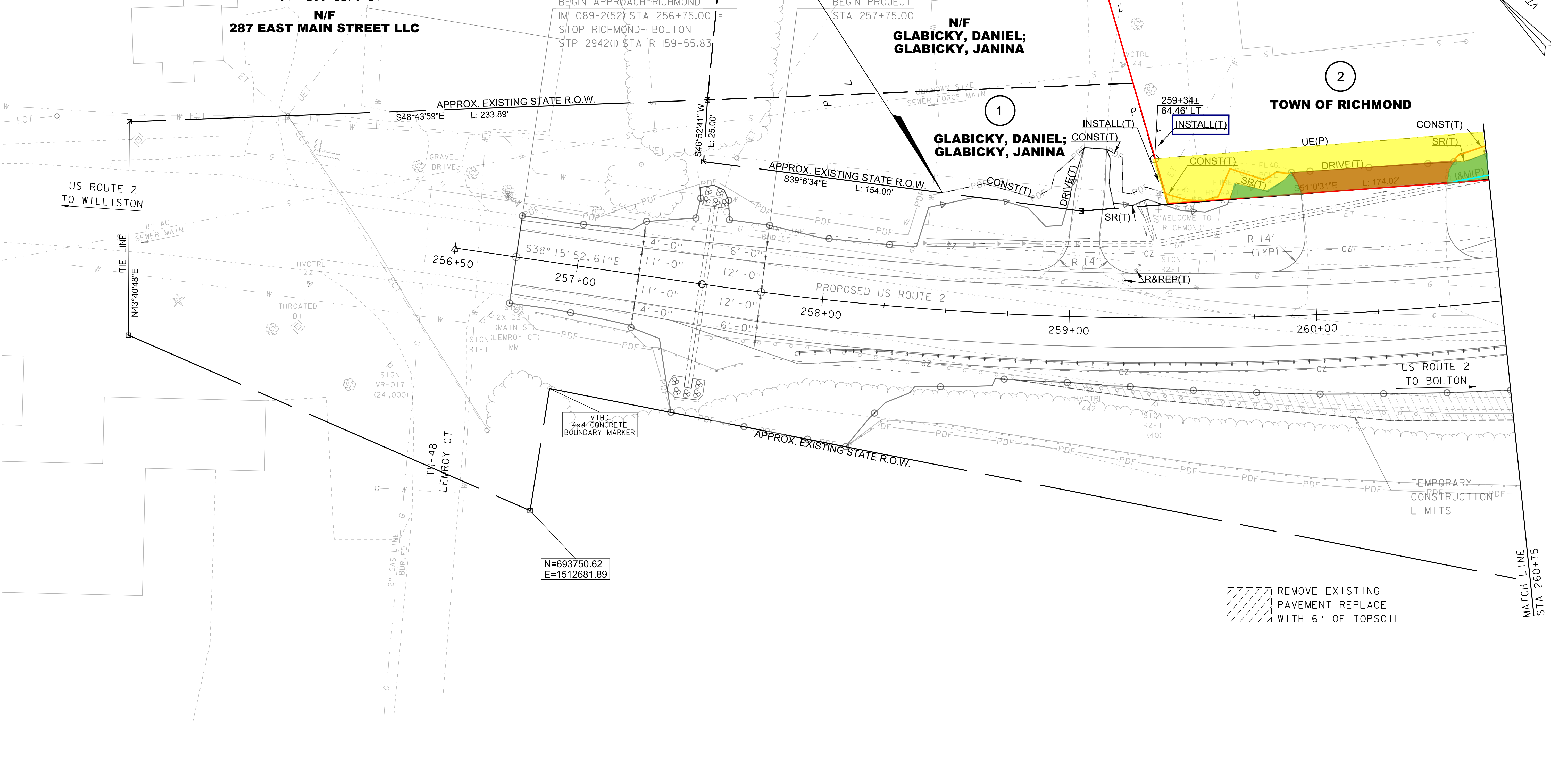
PROJECT NAME: RICHMOND
PROJECT NUMBER: IM 089-2(52)
FILE NAME: r16a183detail.dgn PLOT DATE: 23-JUN-2022
PROJECT LEADER: C. COTA DRAWN BY: M. TROTTIER
DESIGNED BY: F. DALL CHECKED BY: A. PROULX
R.O.W. DETAIL SHEET 1 SHEET 3 OF 20

REMOVAL AND DISPOSAL OF GUARDRAIL
 STA 257+51.2 - 260+75.0 RT
 STEEL BEAM GUARDRAIL, GALVANIZED
 STA 260+57.1 - 260+75.0 LT
 STA 258+29.8 - 260+75.0 RT
 RELOCATE MAILBOX, SINGLE SUPPORT
 STA 259+00.0 LT

COARSE-MILLING, BITUMINOUS PAVEMENT
 STA 259+98.0 - 260+53.0 (DRIVE WAY)
 CONSTRUCT GRAVEL DRIVE
 STA 258+84.6 - 259+25.8 LT
 STA 259+82.4 - 260+71.0 LT
 REMOVE & RESET MAILBOX,
 SINGLE SUPPORT
 STA 259+22.0 LT

MANUFACTURED TERMINAL SECTION, FLARED
 STA 257+93.1 - 258+29.8 RT
 ANCHOR FOR STEEL BEAM RAIL
 STA 260+71.00 LT

**BEGIN R.O.W. PROJECT
 RICHMOND IM 089-2(52)
 STA. 258+45, 47.34' LT**



REMOVE EXISTING PAVEMENT REPLACE WITH 6" OF TOPSOIL

LINES SHOWN ON THIS PLAN AS EXISTING PROPERTY LINES P/L ARE BELIEVED TO BE ACCURATE BUT SHOULD NOT BE RELIED UPON FOR PURPOSES UNRELATED TO THE STATE OF VERMONT'S ACQUISITION OF LAND AND RIGHTS FOR THIS PROJECT.

FOR R.O.W. USE ONLY

SCALE 1" = 20' - 0"
 20 0 20

PROJECT NAME: RICHMOND	PLOT DATE: 22-JUN-2022
PROJECT NUMBER: IM 089-2(52)	DRAWN BY: F. DALL
FILE NAME: r16a183lay1.dgn	CHECKED BY: A. PROULX
PROJECT LEADER: C. COTA	SHEET 5 OF 20
DESIGNED BY: D. PETERSON	
R.O.W. LAYOUT SHEET 1	

REMOVAL AND DISPOSAL OF GUARDRAIL

STA 264+72.9 - 265+50.0 LT

STA 260+75.0 - 265+50.0 RT

REMOVING OF EXISTING FENCE

STA 264+77.3 - 265+50.0 LT

CHAIN-LINK FENCE, 6 FEET

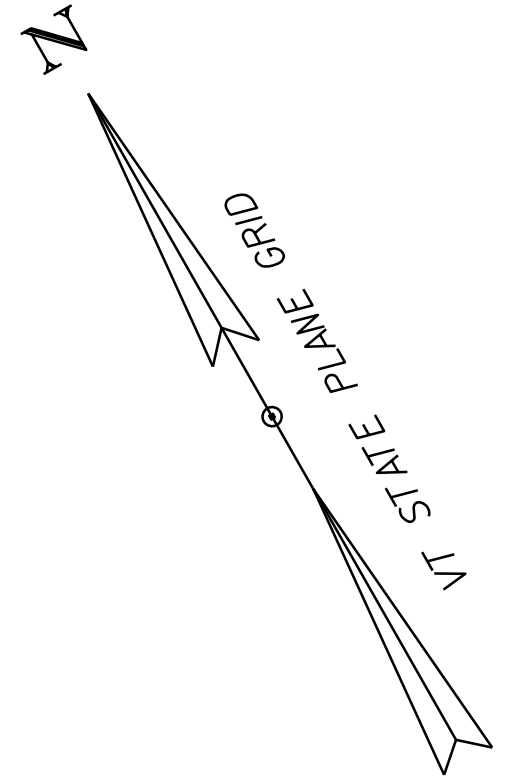
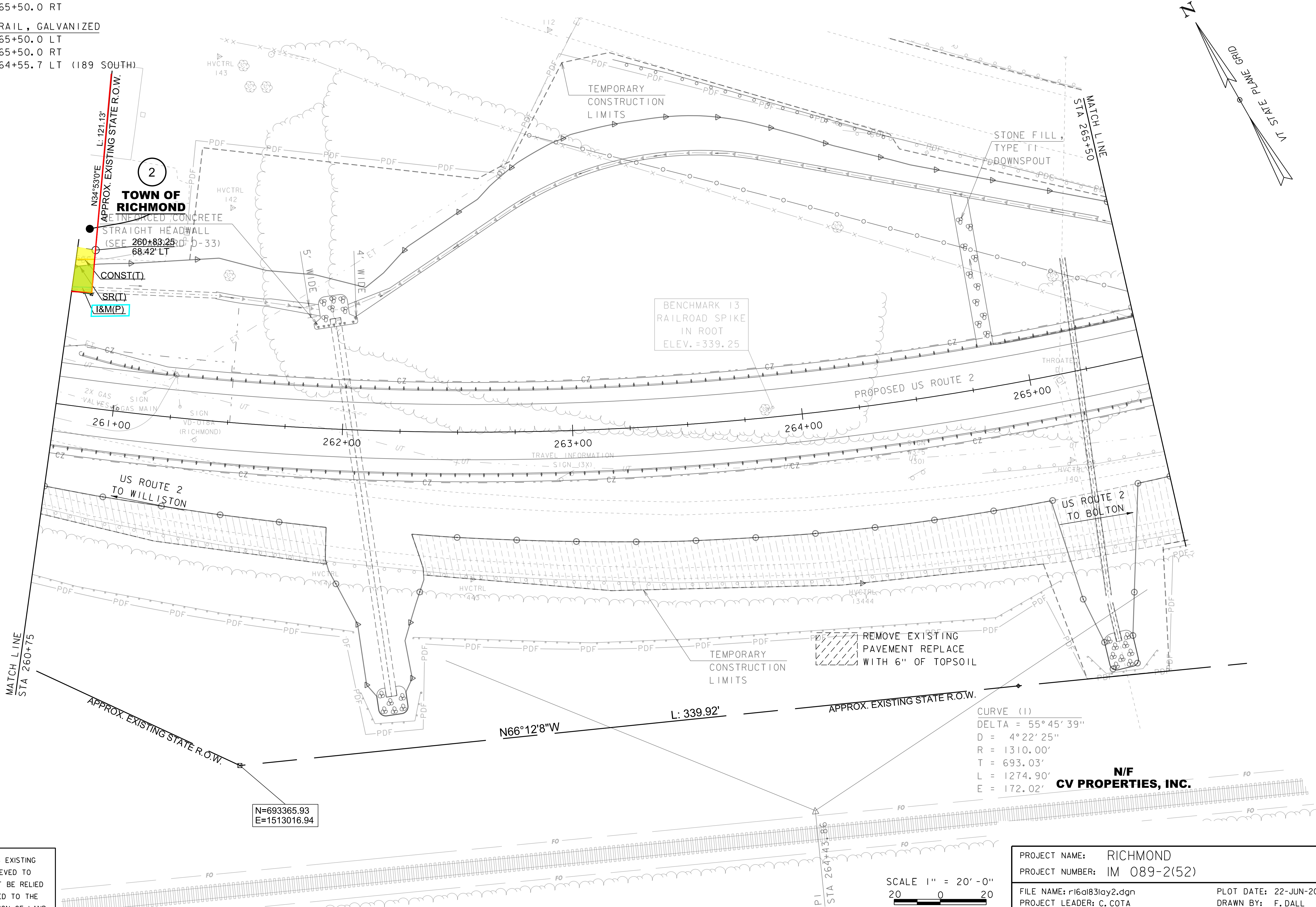
STA 262+81.7 LT - 265+45.0 RT

STEEL BEAM GUARDRAIL, GALVANIZED

STA 260+75.0 - 265+50.0 LT

STA 260+75.0 - 265+50.0 RT

STA 263+25.9 - 264+55.7 LT (189 SOUTH)



LINES SHOWN ON THIS PLAN AS EXISTING PROPERTY LINES P/L ARE BELIEVED TO BE ACCURATE BUT SHOULD NOT BE RELIED UPON FOR PURPOSES UNRELATED TO THE STATE OF VERMONT'S ACQUISITION OF LAND AND RIGHTS FOR THIS PROJECT.

FOR R.O.W. USE ONLY

N=693365.93
E=1513016.94

SCALE 1" = 20'-0"
20 0 20

PROJECT NAME:	RICHMOND	PLOT DATE:	22-JUN-2022
PROJECT NUMBER:	IM 089-2(52)	DRAWN BY:	F. DALL
FILE NAME:	r16a183lay2.dgn	CHECKED BY:	A. PROULX
PROJECT LEADER:	C. COTA	SHEET	6 OF 20
DESIGNED BY:	D. PETERSON		
R.O.W. LAYOUT SHEET	2		

GENERAL INFORMATION

SYMBOLGY LEGEND NOTE

THE SYMBOLGY ON THIS SHEET IS INTENDED TO COVER STANDARD CONVENTIONAL SYMBOLGY. THE SYMBOLGY IS USED FOR EXISTING & PROPOSED FEATURES WITH HEAVIER LINEWEIGHT, IN COMBINATION WITH PROJECT ANNOTATION, AS NOTED ON PROJECT PLAN SHEETS. THIS LEGEND SHEET COVERS THE BASICS. SYMBOLGY ON PLANS MAY VARY, PLAN ANNOTATIONS AND NOTES SHOULD BE USED TO CLARIFY AS NEEDED.

R. O. W. ABBREVIATIONS (CODES) & SYMBOLS

POINT CODE	DESCRIPTION
BF	BARRIER FENCE
CH	CHANNEL EASEMENT
CONST	CONSTRUCTION EASEMENT
CUL	CULVERT EASEMENT
D&C	DISCONNECT & CONNECT
DIT	DITCH EASEMENT
DR	DRAINAGE EASEMENT
DRIVE	DRIVEWAY EASEMENT
EC	EROSION CONTROL
HWY	HIGHWAY EASEMENT
I&M	INSTALL & MAINTAIN EASEMENT
LAND	LANDSCAPE EASEMENT
PDF	PROJECT DEMARCATION FENCE
R&RES	REMOVE & RESET
R&REP	REMOVE & REPLACE
R.T.& I.	RIGHT, TITLE, AND INTEREST
SR	SLOPE RIGHT
UE	UTILITY EASEMENT
(P)	PERMANENT EASEMENT
(T)	TEMPORARY EASEMENT
■	BNDNS BOUND SET
▣	BNDNS BOUND TO BE SET
⊙	IPNF IRON PIN FOUND
●	IPNS IRON PIN TO BE SET
⊠	CALC EXISTING ROW POINT
○	PROW PROPOSED ROW POINT
[LENGTH]	LENGTH CARRIED ON NEXT SHEET

COMMON TOPOGRAPHIC POINT SYMBOLS

POINT CODE	DESCRIPTION
⊕	APL BOUND APPARENT LOCATION
□	BM BENCHMARK
▣	BND BOUND
▣	CB CATCH BASIN
⊕	COMB COMBINATION POLE
▣	DITHR DROP INLET THROATED DNC
⊕	EL ELECTRIC POWER POLE
○	FPOLE FLAGPOLE
○	GASFIL GAS FILLER
○	GP GUIDE POST
⊕	GSO GAS SHUT OFF
○	GUY GUY POLE
○	GUYW GUY WIRE
⊕	GV GATE VALVE
⊕	H TREE HARDWOOD
△	HCTRL CONTROL HORIZONTAL
△	HVCTRL CONTROL HORIZ. & VERTICAL
◇	HYD HYDRANT
○	IP IRON PIN
○	IPIPE IRON PIPE
⊕	LI LIGHT - STREET OR YARD
⊕	MB MAILBOX
○	MH MANHOLE (MH)
▣	MM MILE MARKER
○	PM PARKING METER
▣	PMK PROJECT MARKER
○	POST POST STONE/WOOD
⊕	RRSIG RAILROAD SIGNAL
⊕	RRSL RAILROAD SWITCH LEVER
⊕	S TREE SOFTWOOD
⊕	SAT SATELLITE DISH
⊕	SHRUB SHRUB
⊕	SIGN SIGN
⊕	STUMP STUMP
⊕	TEL TELEPHONE POLE
○	TIE TIE
⊕	TSIGN SIGN W/DOUBLE POST
⊕	VCTRL CONTROL VERTICAL
○	WELL WELL
⊕	WSO WATER SHUT OFF

THESE ARE COMMON VAOT SURVEY POINT SYMBOLS FOR EXISTING FEATURES, ALSO USED FOR PROPOSED FEATURES WITH HEAVIER LINEWEIGHT, IN COMBINATION WITH PROPOSED ANNOTATION.

PROPOSED GEOMETRY CODES

CODE	DESCRIPTION
PC	POINT OF CURVATURE
PI	POINT OF INTERSECTION
CC	CENTER OF CURVE
PT	POINT OF TANGENCY
PCC	POINT OF COMPOUND CURVE
PRC	POINT OF REVERSE CURVE
POB	POINT OF BEGINNING
POE	POINT OF ENDING
STA	STATION PREFIX
AH	AHEAD STATION SUFFIX
BK	BACK STATION SUFFIX
D	CURVE DEGREE OF (100FT)
R	CURVE RADIUS OF
T	CURVE TANGENT LENGTH
L	CURVE LENGTH OF
E	CURVE EXTERNAL DISTANCE
CB	CHORD BEARING

UTILITY SYMBOLGY

UNDERGROUND UTILITIES

— UGU —	UTILITY (GENERIC-UNKNOWN)
— UT —	TELEPHONE
— UE —	ELECTRIC
— UC —	CABLE (TV)
— UEC —	ELECTRIC+CABLE
— UET —	ELECTRIC+TELEPHONE
— UCT —	CABLE+TELEPHONE
— UECT —	ELECTRIC+CABLE+TELEPHONE
— G —	GAS LINE
— W —	WATER LINE
— S —	SANITARY SEWER (SEPTIC)

ABOVE GROUND UTILITIES (AERIAL)

— AGU —	UTILITY (GENERIC-UNKNOWN)
— T —	TELEPHONE
— E —	ELECTRIC
— C —	CABLE (TV)
— EC —	ELECTRIC+CABLE
— ET —	ELECTRIC+TELEPHONE
— AER E&T —	ELECTRIC+TELEPHONE
— CT —	CABLE+TELEPHONE
— ECT —	ELECTRIC+CABLE+TELEPHONE
— — —	UTILITY POLE GUY WIRE

PROJECT CONSTRUCTION SYMBOLGY

PROJECT DESIGN & LAYOUT SYMBOLGY

— — — CZ — — —	CLEAR ZONE
—————	PLAN LAYOUT MATCHLINE

PROJECT CONSTRUCTION FEATURES

▲ — — — ▲ — — — ▲ — — — ▲ — — —	TOP OF CUT SLOPE
○ — — — ○ — — — ○ — — — ○ — — —	TOE OF FILL SLOPE
⊗ ⊗ ⊗ ⊗ ⊗ ⊗	STONE FILL
— — — — —	BOTTOM OF DITCH
— — — — —	CULVERT PROPOSED
— — — — —	STRUCTURE SUBSURFACE
PDF — — — PDF — — —	PROJECT DEMARCATION FENCE
BF — — — BF — — —	BARRIER FENCE
XXXXXXXXXXXXXXXXXXXX	TREE PROTECTION ZONE (TPZ)
//////	STRIPING LINE REMOVAL
~~~~~	SHEET PILES

**CONVENTIONAL BOUNDARY SYMBOLGY**

**BOUNDARY LINES**

—————	TOWN BOUNDARY LINE
—————	COUNTY BOUNDARY LINE
—————	STATE BOUNDARY LINE
———	PROPOSED STATE R.O.W. (LIMITED ACCESS)
———	PROPOSED STATE R.O.W.
———	STATE ROW (LIMITED ACCESS)
———	STATE ROW
———	TOWN ROW
———	PERMANENT EASEMENT LINE (P)
———	TEMPORARY EASEMENT LINE (T)
———	SURVEY LINE
— P — — — P —	PROPERTY LINE (P/L)
— L — — — L —	PROPERTY LINE (P/L)
▲ — — — SR — — — SR — — —	SLOPE RIGHTS
6f — — — 6f — — —	6F PROPERTY BOUNDARY
4f — — — 4f — — —	4F PROPERTY BOUNDARY
HAZ — — — HAZ — — —	HAZARDOUS WASTE

**EPSC LAYOUT PLAN SYMBOLGY**

**EPSC MEASURES**

○ — — — ○ — — — ○ — — —	FILTER CURTAIN
— — — — —	SILT FENCE
— — — — —	SILT FENCE WOVEN WIRE
— — — — —	CHECK DAM
▣	DISTURBED AREAS REQUIRING RE-VEGETATION
⊠	EROSION MATTING

SEE EPSC DETAIL SHEETS FOR ADDITIONAL SYMBOLGY

**ENVIRONMENTAL RESOURCES**

———	WETLAND BOUNDARY
— — — — —	RIPARIAN BUFFER ZONE
— — — — —	WETLAND BUFFER ZONE
— — — — —	SOIL TYPE BOUNDARY
— T&E — — —	THREATENED & ENDANGERED SPECIES
HAZ — — — HAZ — — —	HAZARDOUS WASTE AREA
— AG — — —	AGRICULTURAL LAND
— HABITAT — — —	FISH & WILDLIFE HABITAT
— FLOOD PLAIN — — —	FLOOD PLAIN
— OHW — — —	ORDINARY HIGH WATER (OHW)
— — — — —	STORM WATER
— — — — —	USDA FOREST SERVICE LANDS
— — — — —	WILDLIFE HABITAT SUIT/CONN

**ARCHEOLOGICAL & HISTORIC**

— ARCH — — —	ARCHEOLOGICAL BOUNDARY
— HISTORIC DIST — — —	HISTORIC DISTRICT BOUNDARY
— HISTORIC — — —	HISTORIC AREA
Ⓜ	HISTORIC STRUCTURE

**CONVENTIONAL TOPOGRAPHIC SYMBOLGY**

**EXISTING FEATURES**

—————	ROAD EDGE PAVEMENT
—————	ROAD EDGE GRAVEL
—————	DRIVEWAY EDGE
—————	DITCH
—————	FOUNDATION
— x — — — x — — —	FENCE (EXISTING)
— □ — — — □ — — —	FENCE WOOD POST
— ○ — — — ○ — — —	FENCE STEEL POST
~~~~~	GARDEN
— ○ — — — ○ — — —	ROAD GUARDRAIL
	RAILROAD TRACKS
— — — — —	CULVERT (EXISTING)
— — — — —	STONE WALL
—————	WALL
~~~~~	WOOD LINE
~~~~~	BRUSH LINE
~~~~~	HEDGE
—————	BODY OF WATER EDGE
~~~~~	LEDGE EXPOSED

PROJECT NAME: RICHMOND
 PROJECT NUMBER: IM 089-2(52)
 FILE NAME: r16a183legend.dgn PLOT DATE: 30-NOV-2021
 PROJECT LEADER: C. COTA DRAWN BY: M. LONGSTREET
 DESIGNED BY: M. LONGSTREET CHECKED BY: M. LONGSTREET
 CONVENTIONAL SYMBOLGY LEGEND SHEET 2 OF 20

R. O. W. PLANS

INDEX OF SHEETS

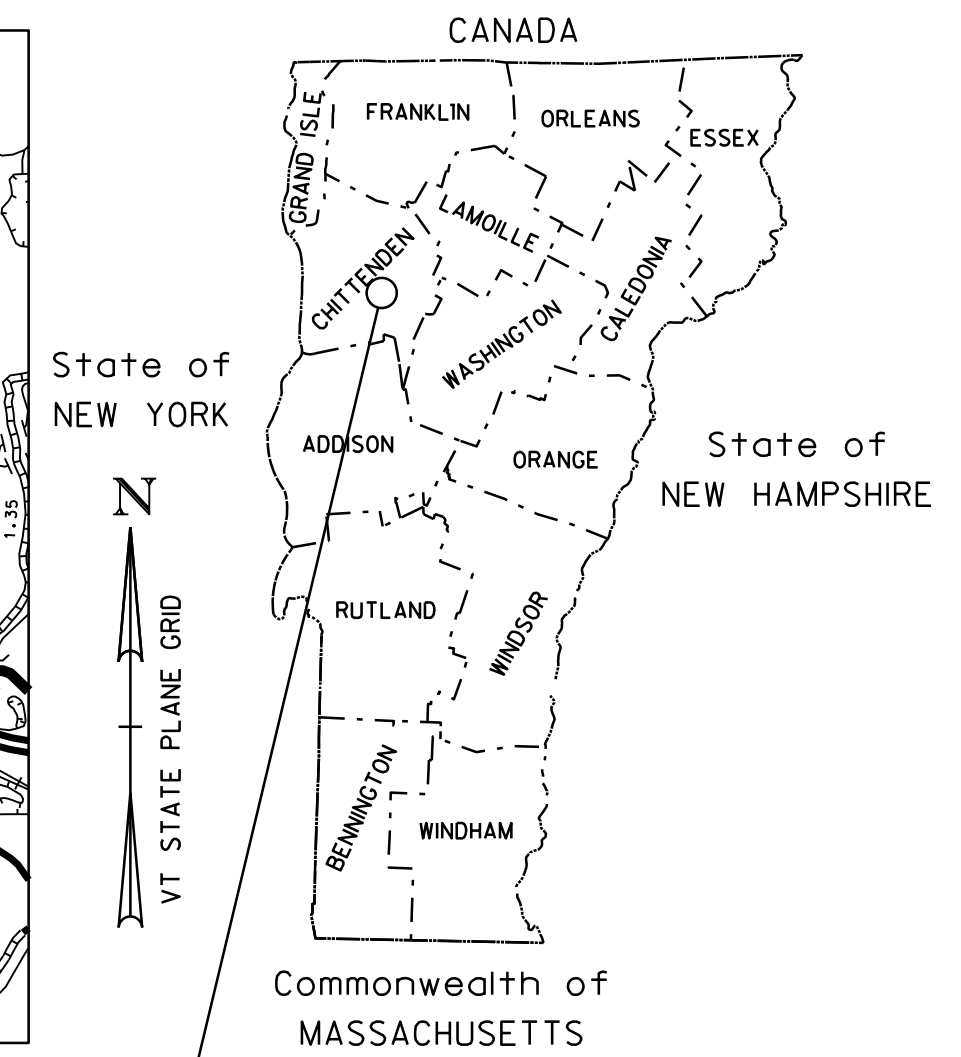
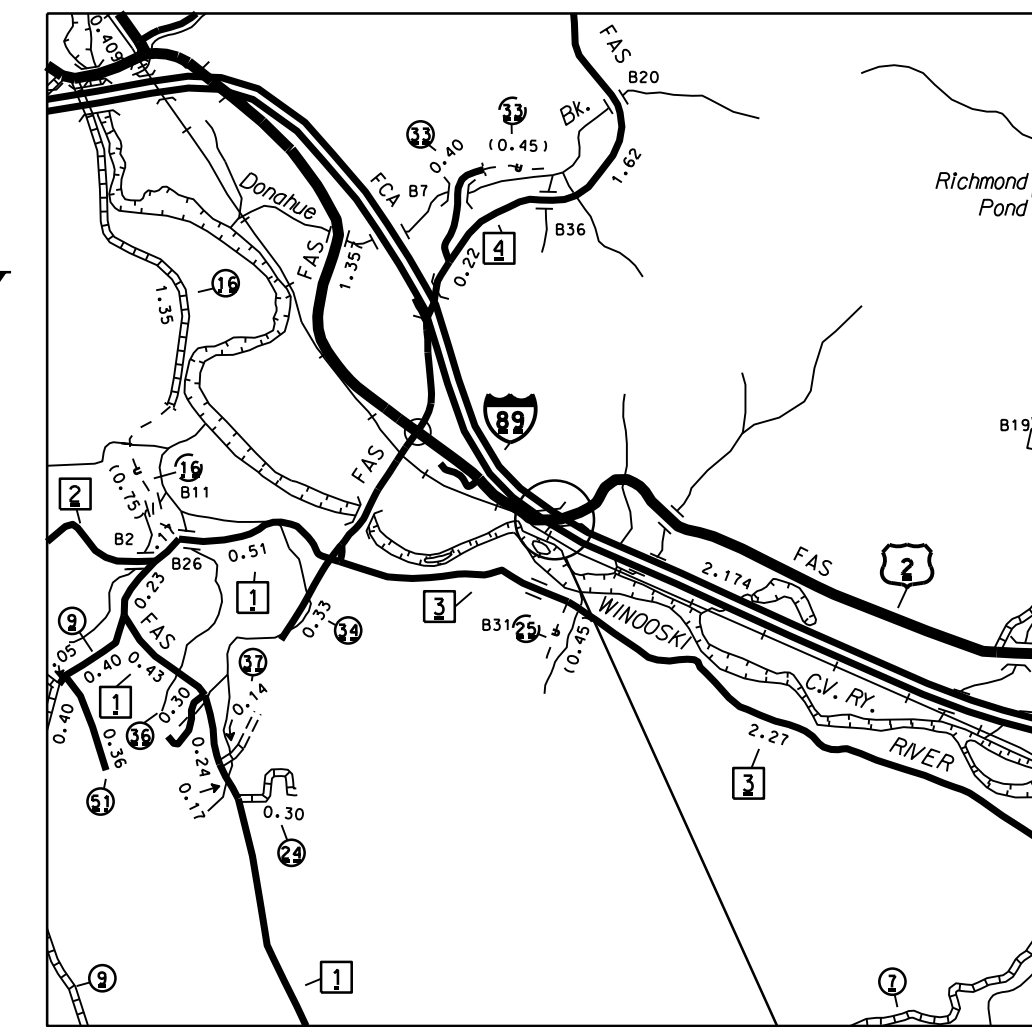
1	TITLE
2	LEGEND
3-4	DETAILS
5-8	LAYOUTS
9	PRELIMINARY INFORMATION
10-11	TYPICALS
12	TIE
13-16	PROFILES
17-20	EPSC CONSTRUCTION

STATE OF VERMONT AGENCY OF TRANSPORTATION



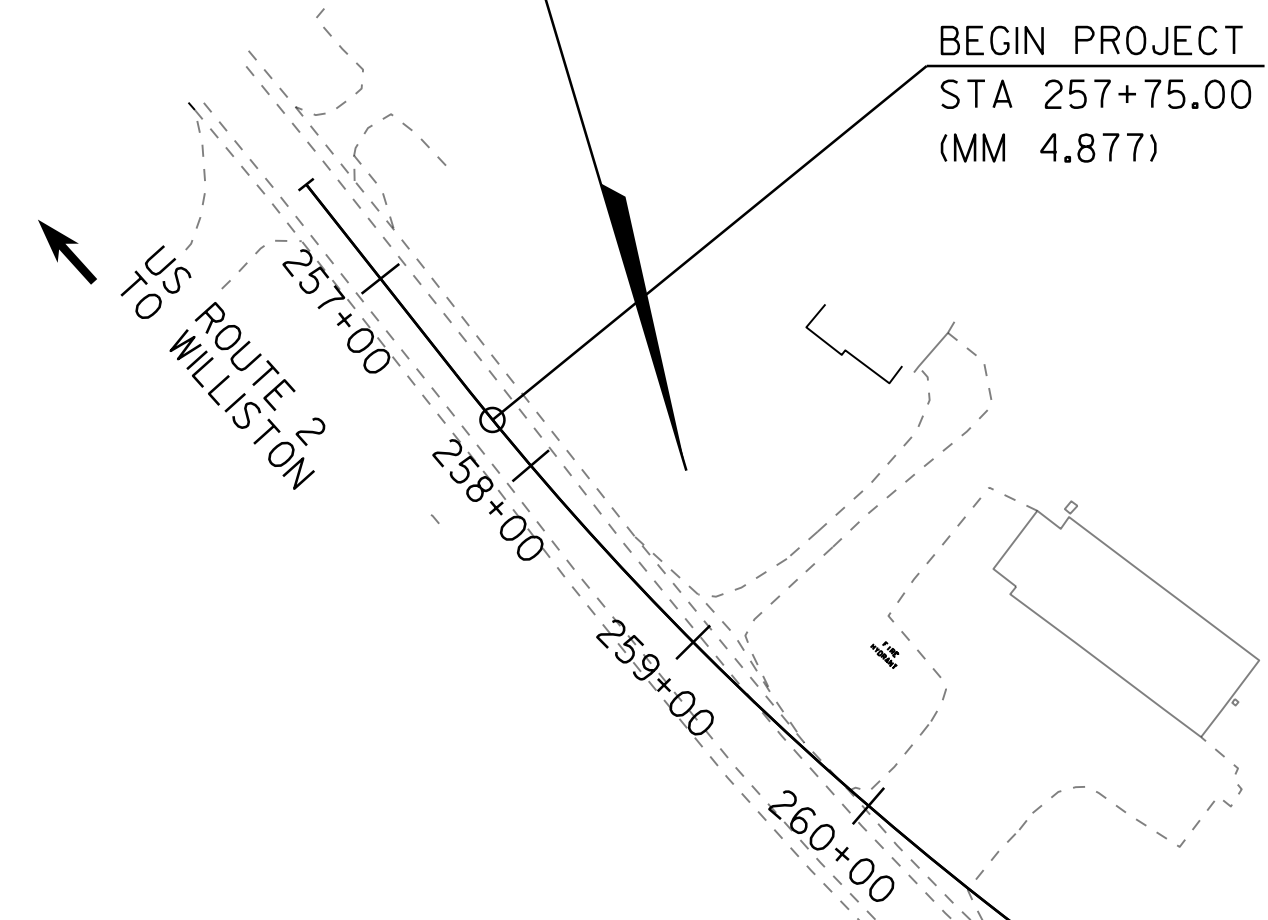
PROPOSED IMPROVEMENT BRIDGE PROJECT

TOWN OF RICHMOND
COUNTY OF CHITTENDEN



RICHMOND
IM 089-2 (52)

**BEGIN R.O.W. PROJECT
RICHMOND IM 089-2(52)
STA. 258+45, 47.34' LT**

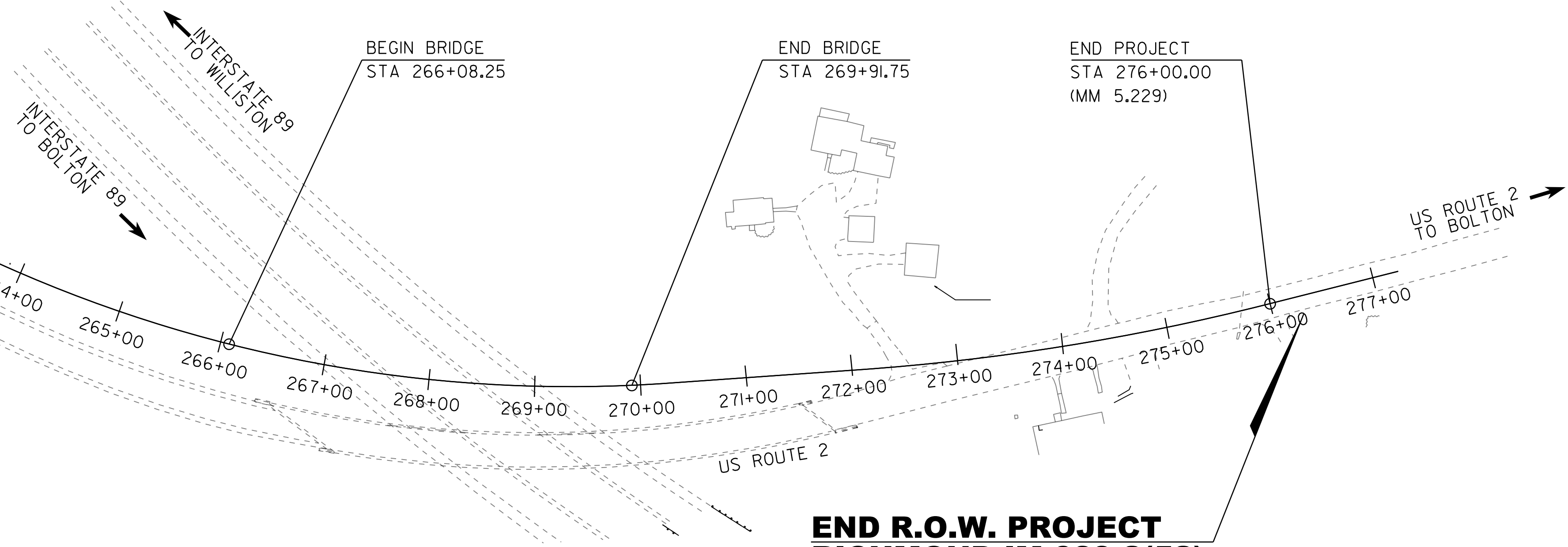


ROUTE NO : US ROUTE 2, MAJOR COLLECTOR, BRIDGE 29

PROJECT LOCATION: BRIDGE 29 ON US 2 IN THE TOWN OF RICHMOND LOCATED APPROXIMATELY 1.9 MILES EAST OF THE INTERSECTION OF US 2 AND VT 117

PROJECT DESCRIPTION: REPLACEMENT OF EXISTING BRIDGE WITH A NEW TWO SPAN BRIDGE AND RELATED ROADWAY WORK

LENGTH OF STRUCTURE: 383.50 FEET
LENGTH OF ROADWAY: 1441.50 FEET
LENGTH OF PROJECT: 1825.00 FEET
LENGTH OF ROW PROJECT: 1783.54 FEET



CONSTRUCTION IS TO BE CARRIED ON IN ACCORDANCE WITH THESE PLANS AND THE STANDARD SPECIFICATIONS FOR CONSTRUCTION DATED 2018, AS APPROVED BY THE FEDERAL HIGHWAY ADMINISTRATION ON APRIL 13, 2018 FOR USE ON THIS PROJECT, INCLUDING ALL SUBSEQUENT REVISIONS AND SUCH REVISED SPECIFICATIONS AND SPECIAL PROVISIONS AS ARE INCORPORATED IN THESE PLANS.

QUALITY ASSURANCE PROGRAM : LEVEL 2
SURVEYED BY : VTRANS
SURVEYED DATE : 08/06/2018

DATUM
VERTICAL NAVD 88 FT
HORIZONTAL NAD 83 (2011)
SPC (4400 VT) 5FT

ALL DRIVES AS INDICATED ON PLANS ARE SUBJECT TO PERMITS PURSUANT TO TITLE 19 V.S.A. § 1111.

**END R.O.W. PROJECT
RICHMOND IM 089-2(52)
STA. 276+28.54, 7.21' RT**

RIGHT OF WAY & ENVIRONMENTAL MANAGER
APPROVED ANDREA WRIGHT DATE 11/29/2021
PROJECT MANAGER : CAROLYN COTA, P.E.
PROJECT NAME : RICHMOND
PROJECT NUMBER : IM 089-2 (52)
SHEET 1 OF 20 SHEETS

SCALE 1" = 80' - 0"
80 0 80