

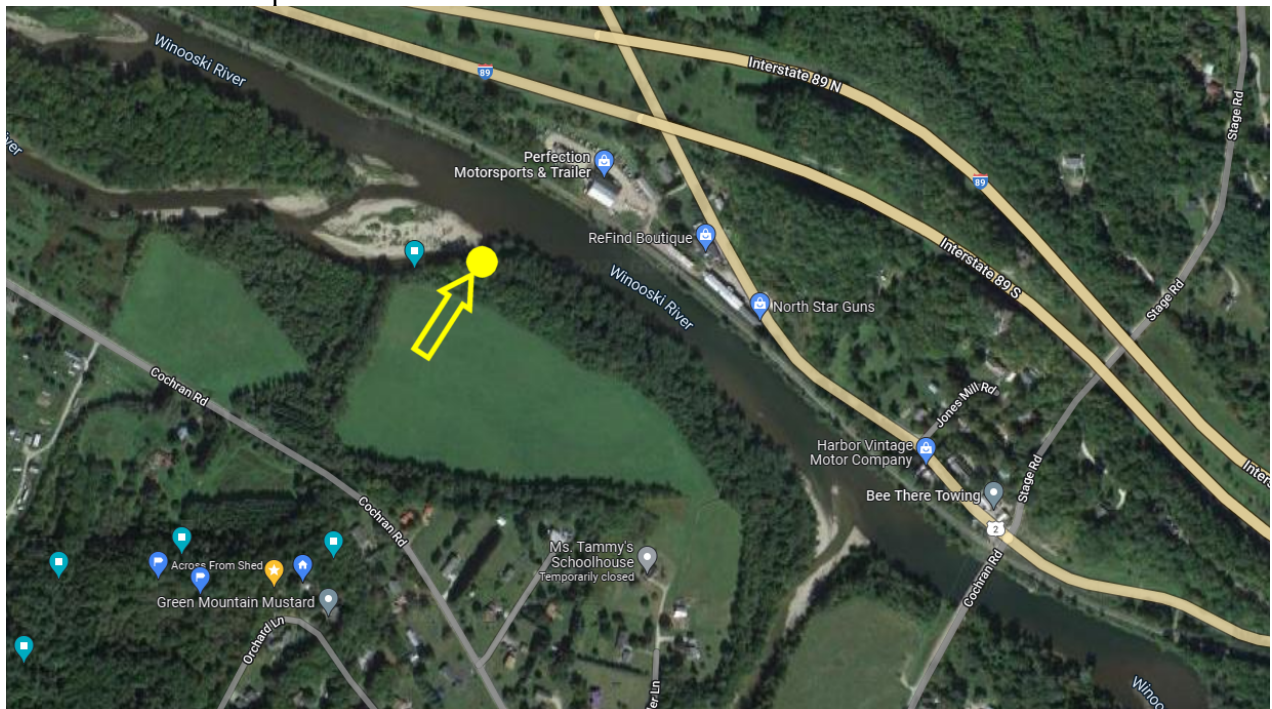
## Conservation Reserve Fund Form

### Project Description

This is a request to use \$300 of Conservation Reserve Fund money to put a bench on the side of the Winooski River.

Hello I'm Gary Beckwith, I live in Jonesville and I jog on the Beeken River Trail regularly. For a few years now I've been putting up a hammock at a really nice spot, near the Jonesville end of the trail. I leave it there all summer and encourage others to use it, and I can tell it's gotten some use. It's a great spot because it's up above the river a bit and I've seen Osprey and an Eagle there and lots of other wildlife. I started thinking that it would be nice to have a real bench there, as many people aren't comfortable in a hammock. So I got permission from the Land Trust (the spot is on property owned by the Richmond Land Trust) and started talking about the idea with a few people who live in the area, and everyone seems to think it's a great idea.

The location I'd like to put the bench is [here](#):



I have raised about half of the money to pay for the bench and I am asking for the Fund to cover the rest. After discussion with those who have contributed money, it was agreed that a love seat Adirondack bench would be great, because this type of bench is extremely comfortable and relaxing to sit in, and it matches the feel of sitting by the river. A regular bench with a shorter back would not be as fitting to this location. The bench we chose is made of polywood, which is “high-density polyethylene” (HDPE) a very durable plastic and this one is made from recycled materials, keeping with the environmental motive.

Here is a picture of the bench we selected:



More information about the bench can be found here:

<https://www.polywood.com/vineyard-adirondack-bench-adbn600.html>

### Matching Fund Criteria

I believe putting a bench by the river there will benefit Richmond residents in many ways. People who sit there will gain a greater appreciation of the river and the wildlife there. And when people develop an appreciation, they tend to do things to protect it.

Specifically:

- A4 states that the fund is for providing access to a natural resource or recreation area.
- A7 because roughly half the money has already been raised by other contributors.
- B7 because it supports no-cost recreational activities, like relaxing by the river.

### Project Schedule

As soon as the funds are available, we will order the bench. As soon as the bench arrives we will put it at the spot. I spoke to the manufacturer and they said we can leave it out over the winter.

### Project Partners

Several people who live in the area have contributed money for the bench and I have raised about \$250 at the time of writing this.

The Richmond Land Trust can also be considered a partner because it is on land owned by RTL and they approved the idea.

### Financial information

The price of the bench is \$500 (plus tax) and I have raised \$250, so we need another \$300.

### Long Term Plans

I will personally make sure the bench is cared for, and several other people have said they would. Maintenance will be very minimal, just checking to make sure it's sturdy and perhaps washing it every once in a while.