

Bringing Vermont's Recycling Into the 21st Century

Michele Morris
Dir. of Marketing & Communications

August 15, 2022



Who We Are

CHITTENDEN COUNTY, VT

169,681

residents

7,333

businesses



- Municipal District created in 1987 by our member towns and cities.
- We serve the public without profit as a motive.

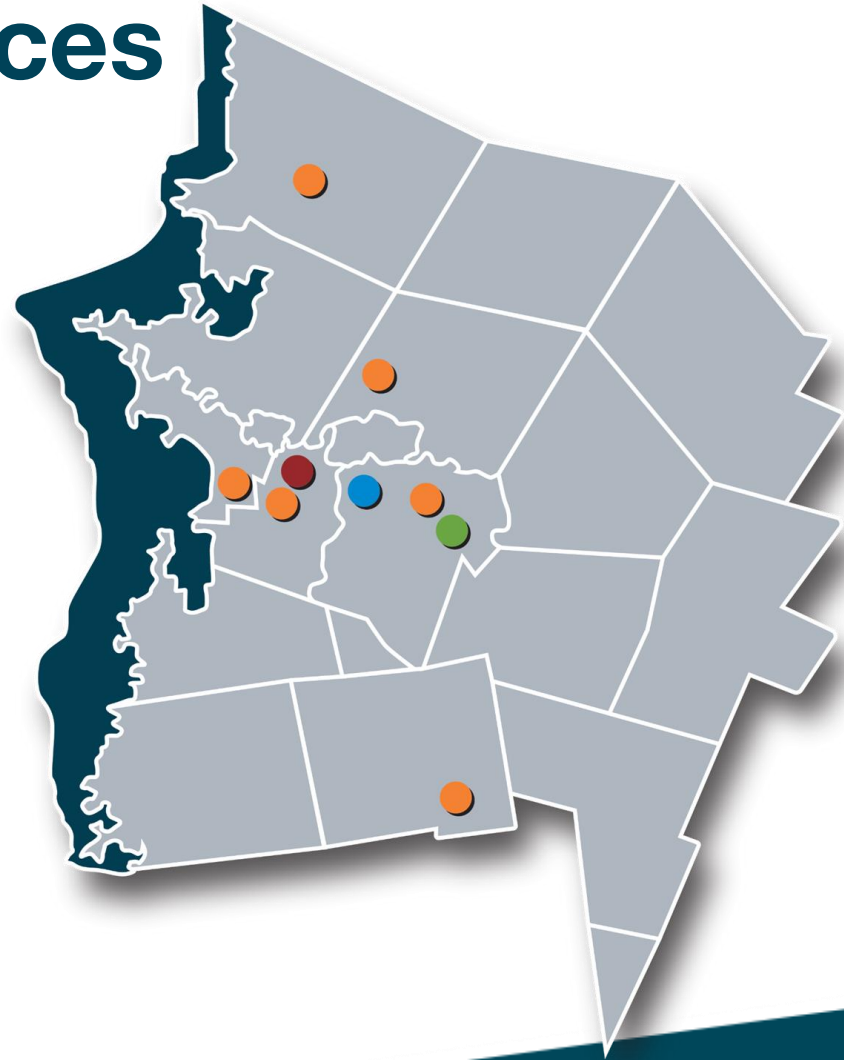
2020 data. Sources: U.S. Census and VT Dept. of Labor



Chittenden Solid Waste District

Facilities and Services

- Environmental Depot and Rover
- Organics Diversion Facility (Compost)
- Drop-off Centers
- Outreach and Education
- Technical & Financial Support for Members
- Public Policy
- Compliance
- Local Color Paint and Green Mountain Compost
- Materials Recovery Facility



What We Do



[Click to Play Video](#)

What is a MRF?

- Sorts and processes “blue-bin” recyclables for end markets
- CSWD owns MRF building, property, equipment
- Only publicly owned single-stream MRF in VT



Why We Need A New MRF



- Built in 1993
- At maximum capacity
- Cannot expand
- Single baler; no redundancy



Why We Need A New MRF



- No flexibility
- Limits the amount Vermonters can recycle.
- Inefficient hand-sorting
- Losing valuable recyclables

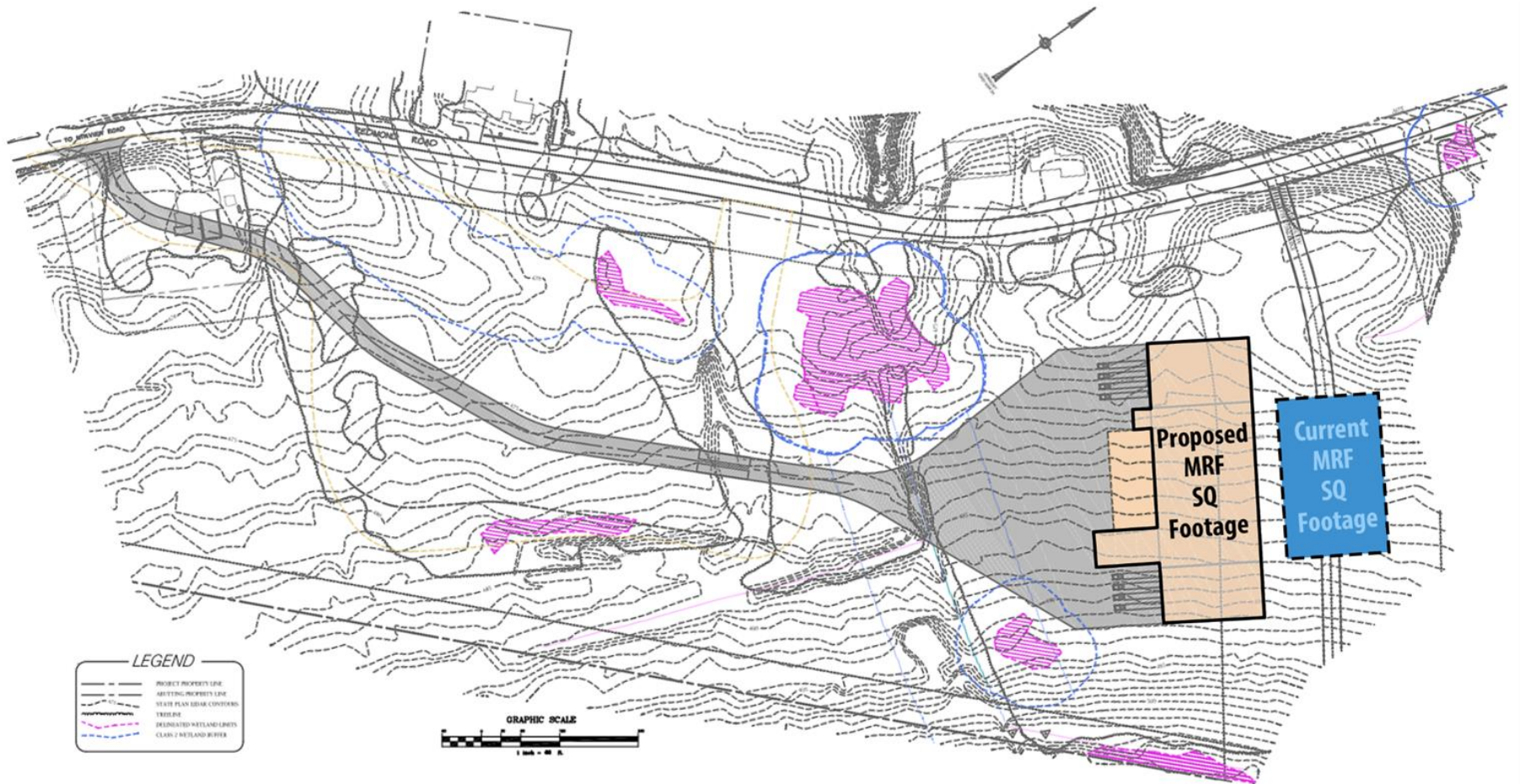


- Severely limited storage
- Reduces quality and value of recyclables
- Hampers marketing flexibility



New MRF Conceptual Design

Redmond Road, Williston



The New MRF Will:

- Provide decades of affordable, in-state recyclables processing
- Feature modern technology to separate recyclables more efficiently and effectively.
- Adapt to current and future recycling needs
- Allow Vermonters to recycle more volume and types of materials



Technology Benefits

Optical sorters and eddy currents – standard technology in any 21st-century MRF.



- Essential for meeting quality standards
- Can help alleviate labor shortages.



Chittenden Solid Waste District

Capacity Benefits

More square footage = higher quality output.



More and longer conveyors enable better sorting.

Adequate bale storage

All processing is indoors

Future-Proofing Benefits



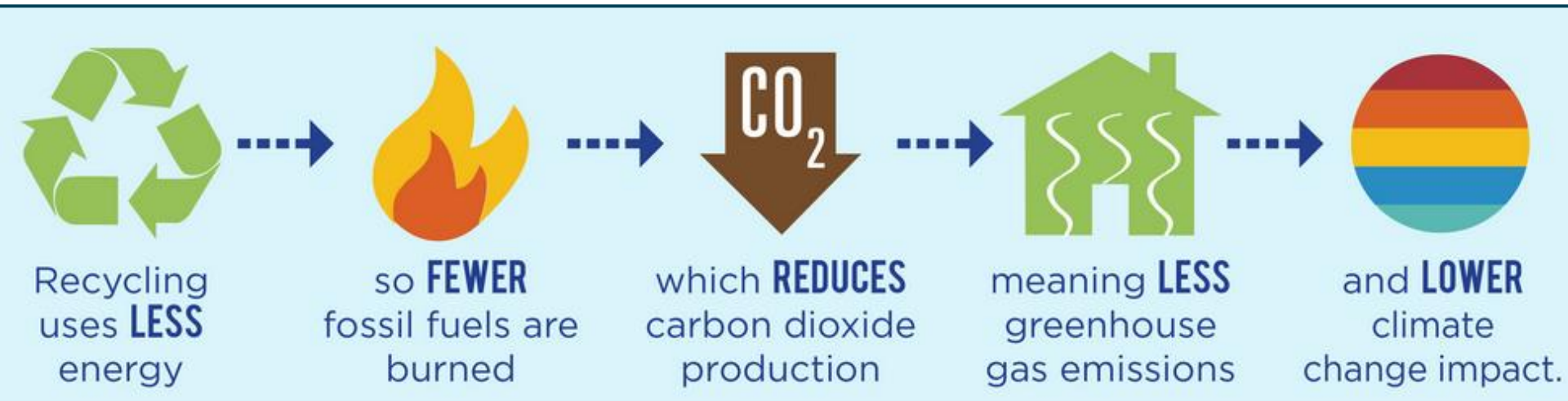
- 40% more capacity will equip us for the next 30 years.
- Ability to adapt to evolving packaging = removing more recyclables from the waste stream.



Environmental Benefits

The new MRF will:

- Continue to preserve landfill space.
- Be able to process up to 70,000 tons (140 million pounds) of recyclables every year. The equivalent of removing 52,500 passenger vehicles from the road and conserving nearly 28 million gallons of gas annually.



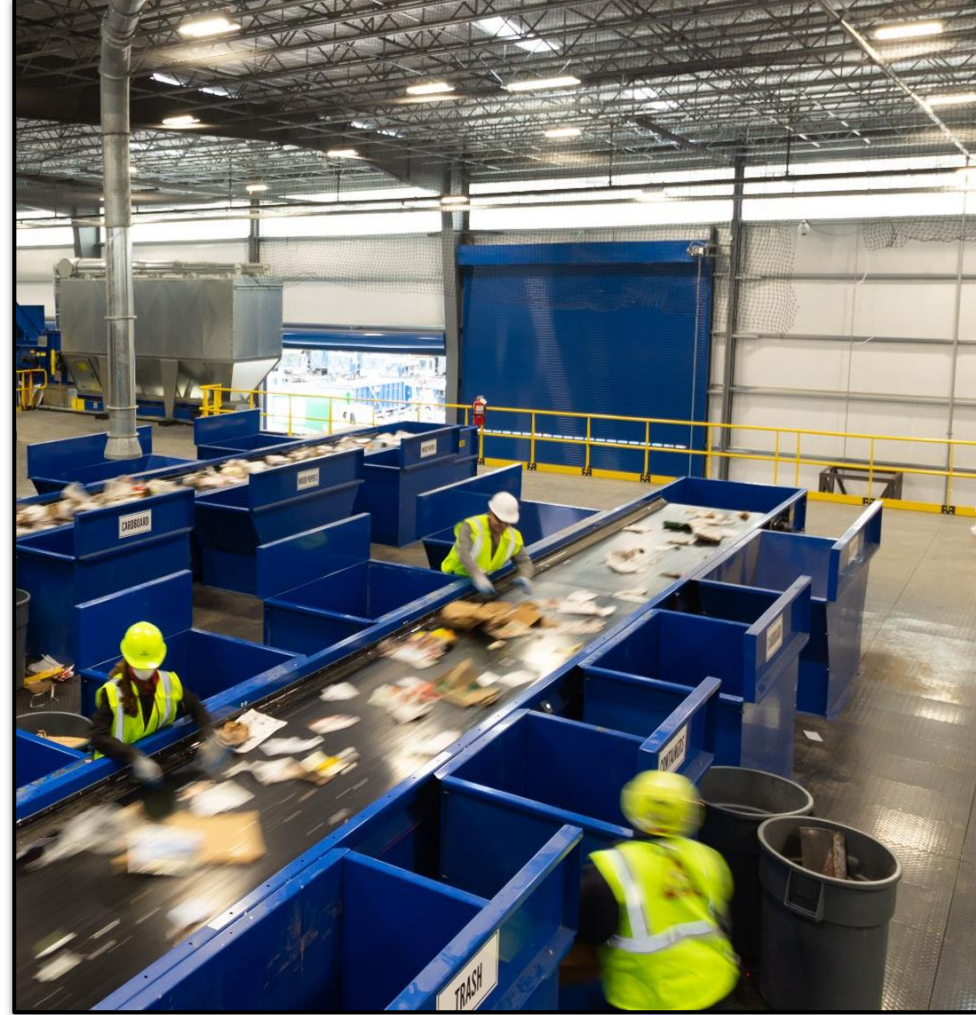
Benefits for Workers

The new MRF will:

- Provide jobs for 21 Vermont workers.
- Create higher skilled positions to run the more sophisticated equipment.
- Be cleaner, brighter, and better ventilated = improved working conditions.



Current MRF



New MRF



No Cost to Taxpayers

- CSWD will pay back the loan over 25 years through operational revenue.
- CSWD's municipally owned will continue to serve the public without profit as a motive.
- CSWD will keep fees as low as possible and provide maximum recycling opportunities even when not profitable.



Funding Sources

Source of Funds	Amount
VT Municipal Bond Bank	\$16,000,000
Closed Loop Fund	\$6,000,000
CSWD contribution*	\$3,500,000
The Recycling Partnership	\$500,000
TOTAL	\$26,000,000
*Less EPA grant funding	



Vote 'yes' to recycle more!

- CSWD is seeking voter approval during this year's November General Election to borrow \$22 million to build the new MRF.
- To vote please visit the My Voter webpage after August 31st to request a ballot, or vote in person at your regular polling place.

The logo features a large blue checkmark to the left of the words "VOTE YES" in bold, sans-serif font. "VOTE" is blue and "YES" is red. A red horizontal line is positioned below the text.



Questions?

For more information and to stay up to date please visit

www.CSWD.net/mrf-bond

