



Richmond IM 089-2(52)

Selectboard Meeting

US Route 2 – Bridge #29 over Interstate 89

May 15, 2023

Introductions

Carolyn Cota, P.E.

VTrans Design Project Manager

David Peterson, P.E.

VTrans Project Engineer

Josh Hulett

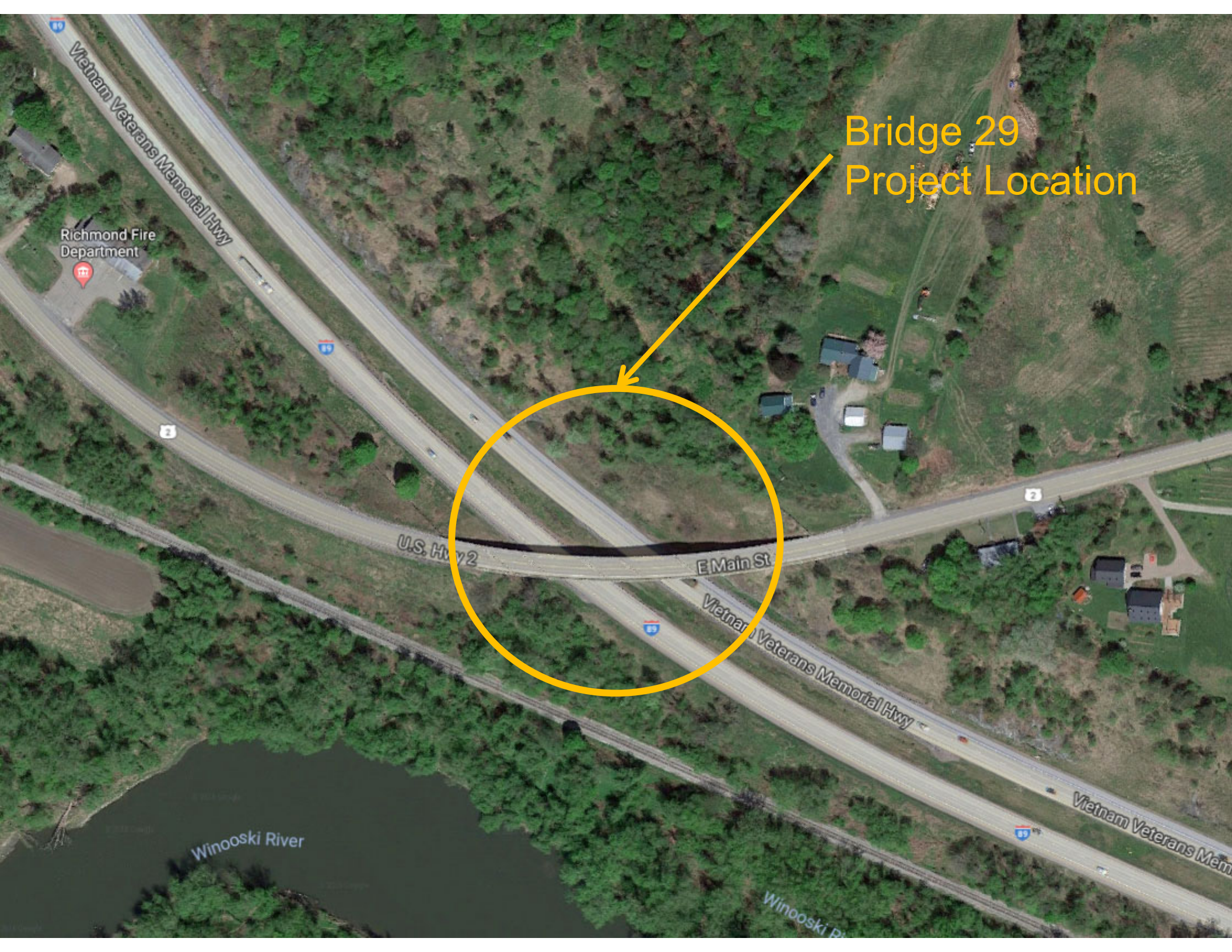
VTrans Resident Engineer

Stephanie Barrett

Public Information Consultant

Purpose of Meeting

- Overview of the project as designed
- Discuss anticipated project construction schedule
- Discuss Traffic Control during construction
- Questions and Comments



Bridge 29
Project Location

Richmond Fire
Department



U.S. Hwy 2

E Main St

Vietnam Veterans Memorial Hwy

Vietnam Veterans Mem

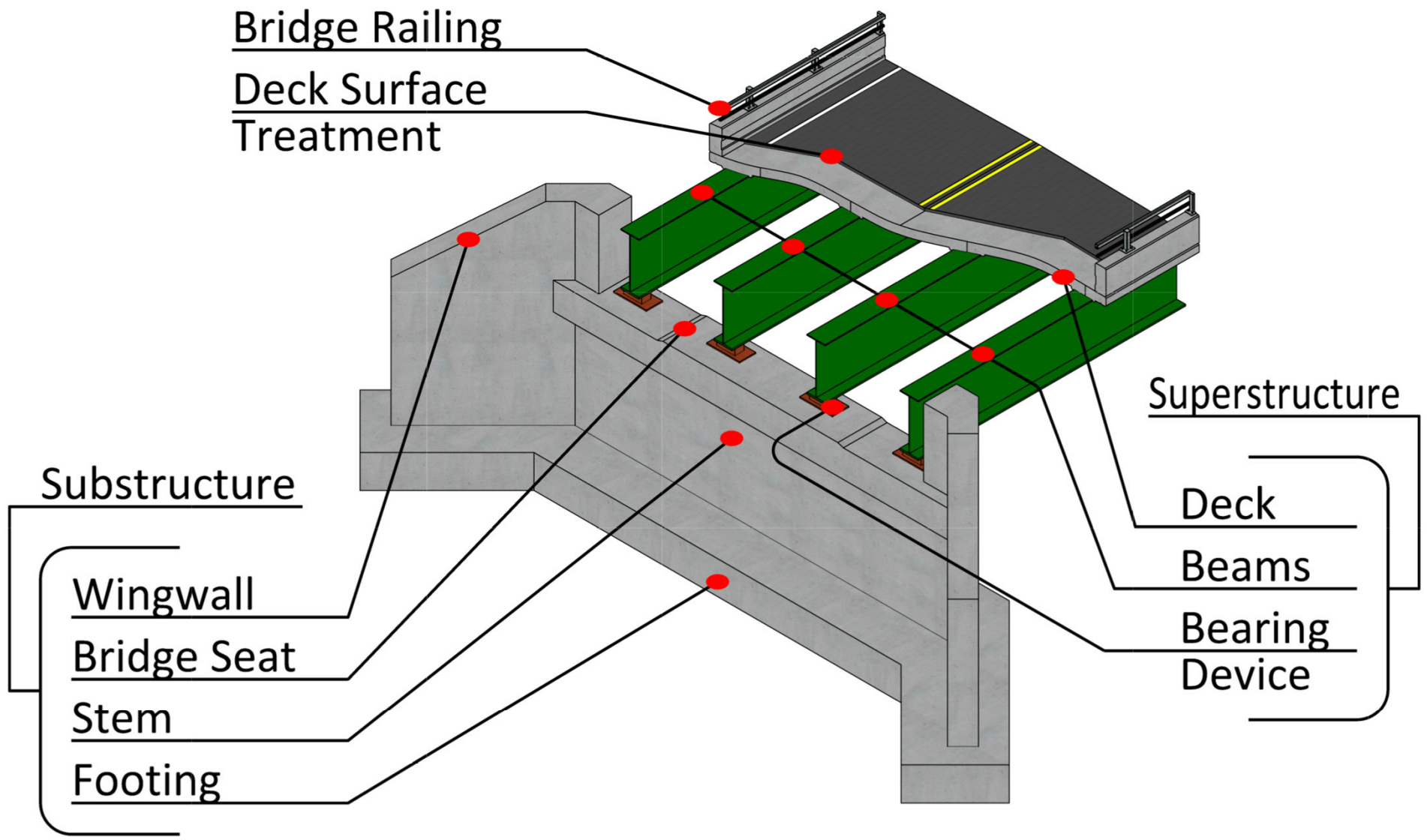
Winooski River

Winooski R

Project Overview

- Review of the Existing Bridge
- Preview of the New Bridge
- Project Cost

Description of Terms Used



Looking East over Bridge



Existing Conditions – Bridge #29

- Roadway Classification – Major Collector
- Bridge Type – 497' long 8-span Rolled Beam Bridge
- Ownership – State of Vermont
- Constructed in 1964

04 / 29 / 20

Pier Deterioration



04 / 10 / 20

Looking West over Bridge



Existing Conditions - Bridge #29

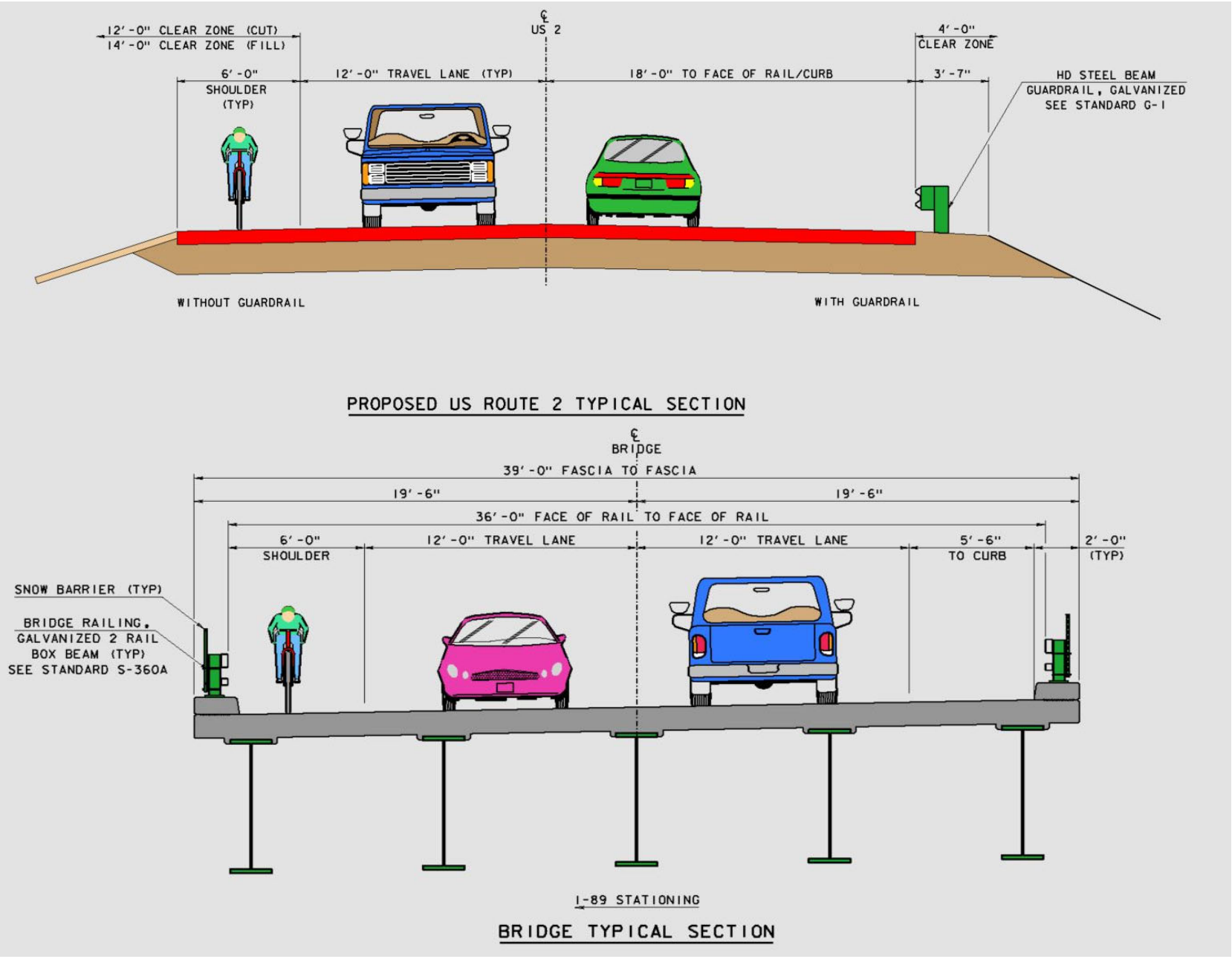
- High Priority Bicycle corridor
 - Bridge is narrow

04/10/20

The New Bridge

- Two Span Composite Curved Steel Girder Bridge
 - 376 Feet Long (Two – 176 ft spans)
 - Beams are 84" deep
 - Utilizing Galvanized Steel Reinforcing in the Deck and Pier
 - 100 Year Design Life
 - Wider Bridge and Approaches – shoulders now 6ft wide for increase safety for bicycles
 - Construction Cost: \$19,300,000 – funding split 90% Federal and 10% State
 - Contractor: Engineers Construction Inc. (ECI)
 - Project will match into Richmond – Bolton Roadway Project – no overlapping work.

Typical Sections



Layout and 3D View

New Bridge Shifted North



Elevation View – Looking North



Elevation View – Looking South



What Will the New Bridge Look Like?



Proposed Example - Bridge #29

- Middlesex

Project Construction Schedule

- 3 Season Construction Project – June 2023 to October 2025
- Construction Start – June 2023
 - Contractor Anticipates Starting early June with minor bedrock probing occurring sooner.
 - Majority of work in 2023 will be constructing bridge foundations – Pier, Abutments and Retaining Wall
- Construction Year 2024
 - 2024 Anticipated Work – Bridge Steel Girders, Deck and final roadway approaches. New Bridge Open to traffic in the fall
- Construction Year 2025
 - 2025 Anticipated Work – Demolition of the existing bridge, turf establishment and final drainage structures.
 - VTrans has allowed some winter work in the contract but currently not anticipated per the schedule the Contractor submitted.

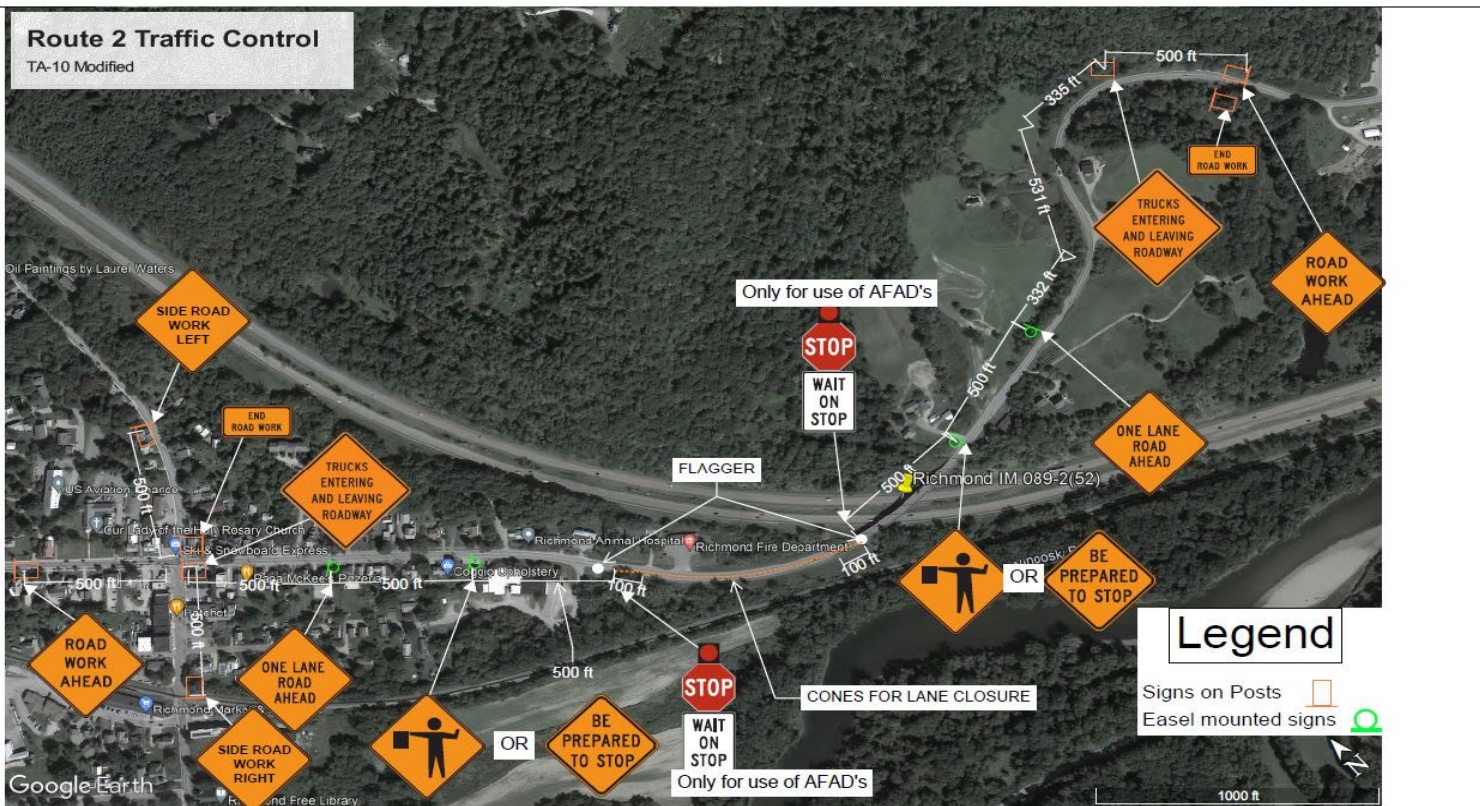
Traffic Control

- Contractor Will Submit a full Traffic Control Plan including Interstate Cross Overs
 - TCP will include all work required to maintain traffic on US 2 and I-89 as well as access to adjacent drives.
 - US 2 traffic maintained on the existing bridge, only daily lane closures will occur on US 2.
 - Daily Single Lane Closures allowed on I-89 except on weekends and between 3pm-6pm each day.
 - Cross Overs on I-89 will be used for new steel girder erection and existing bridge demolition in 2024-2025. Limited to 60 total days in use per year.

Traffic Control Cont.

- Access to Fire Station and other Drives

- Fire Station Drive shall always be maintained with at least a 40' wide drive width. Flaggers will perform "All Stop" in all other directions during an emergency.



TITLE: Route 2 Traffic Control Typical <small>Signs specific to single lane closures may be adjusted depending on lane closure location. TA-10 Modified to add TRUCKS ENTERING signs. This is an example TA-10, that can occur with appropriate approach distances at other locations within the project limits.</small>		SCALE: 1" = 350' DWG NO.: 2 DRAWN BY: J. Veronneau	DATE: 5/4/23 CHECKED BY: P. Foerster	SHEET: 15 OF 45 REV 0 APPROVED BY: B. MacKinney
--	--	---	---	--





Richmond IM 089-2(52) Questions and Comments

US Route 2 – Bridge #29 over Interstate 89

May 15, 2023