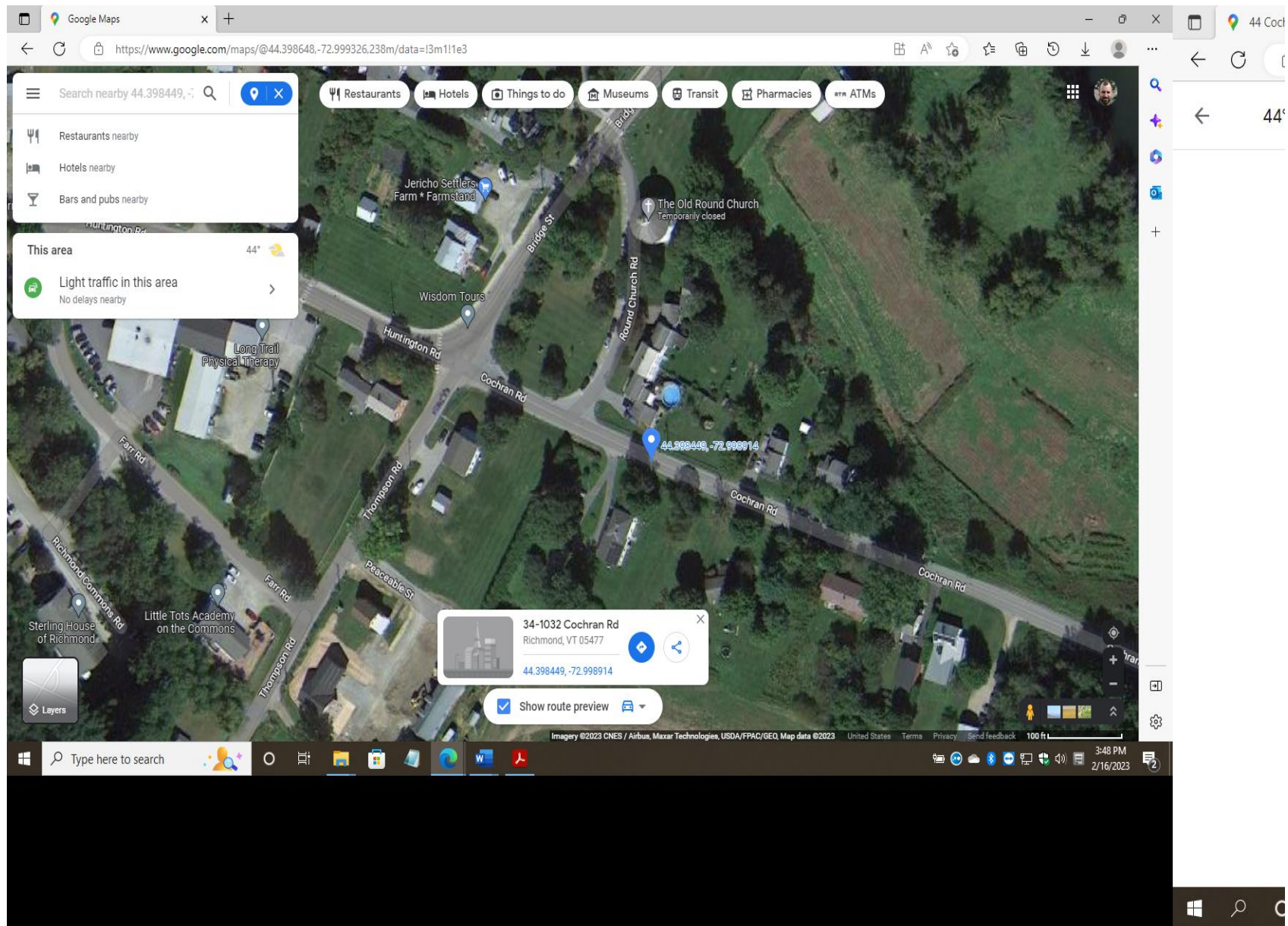




Cochran Road—West end

Recommendations:

- ◆ Install a Radar Speed Sign on the existing 25 mph sign post, as shown in the picture above.



Blue teardrop indicates approximate location of Radar Speed Feedback Sign



Cochran Road—West end

Recommendations:

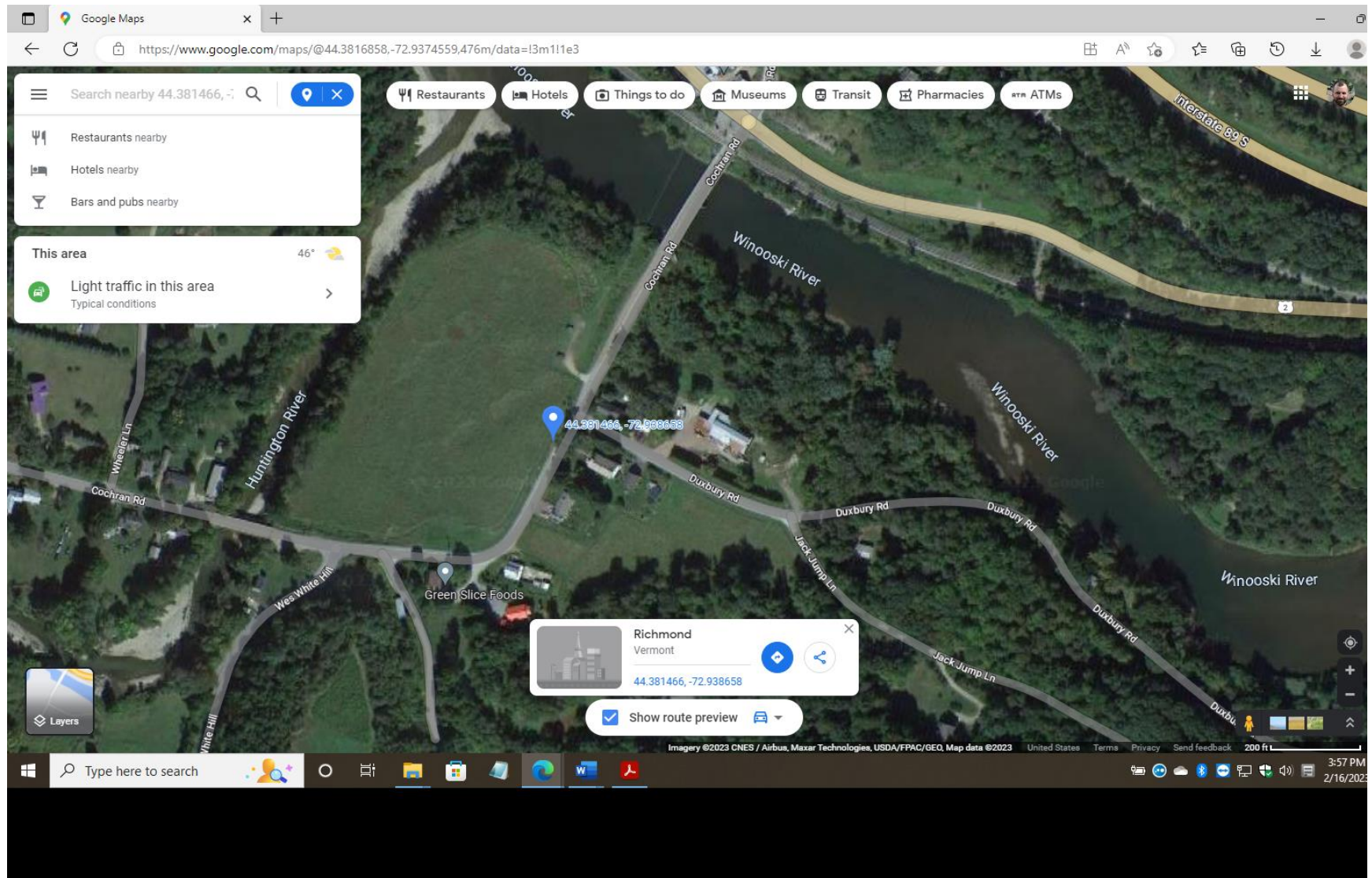
- ♦ Install a 25 mph Speed Sign approximately at 142 Cochran Road.



Cochran Road—East end

Recommendations:

- ◆ Install a Radar Speed Sign on the existing 25 mph sign post, as shown in the picture above.



Blue teardrop indicates approximate location of Radar Speed Feedback Sign



Cochran Road—East end

Recommendations:

- ◆ Install a 25 mph Speed Sign on Cochran Road approximately 125 ft west of Wheeler Lane.



Cochran Road—East end

Recommendations:

- ◆ Install curve warning chevron signs in both travel directions along the curve, as shown in the picture above.