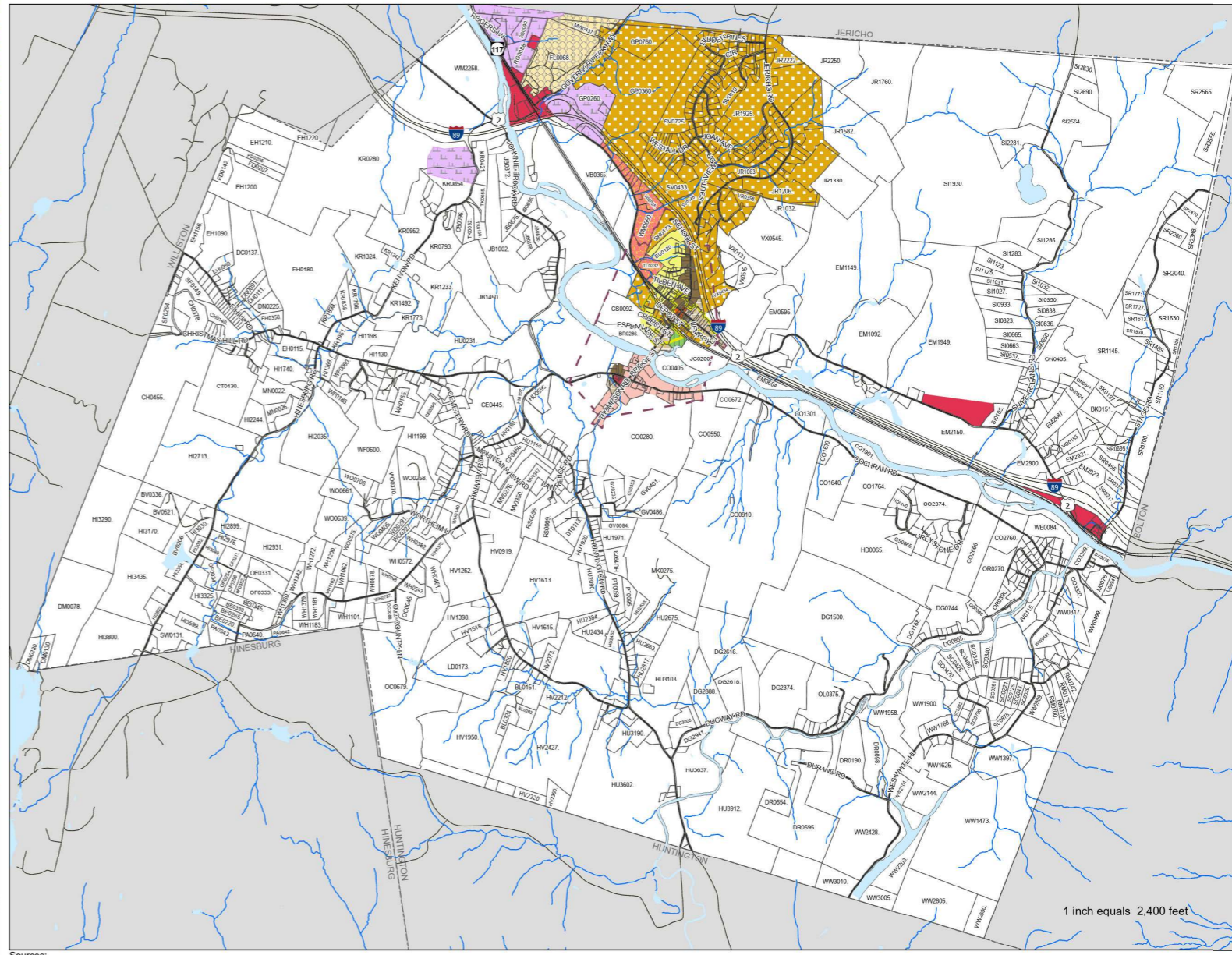
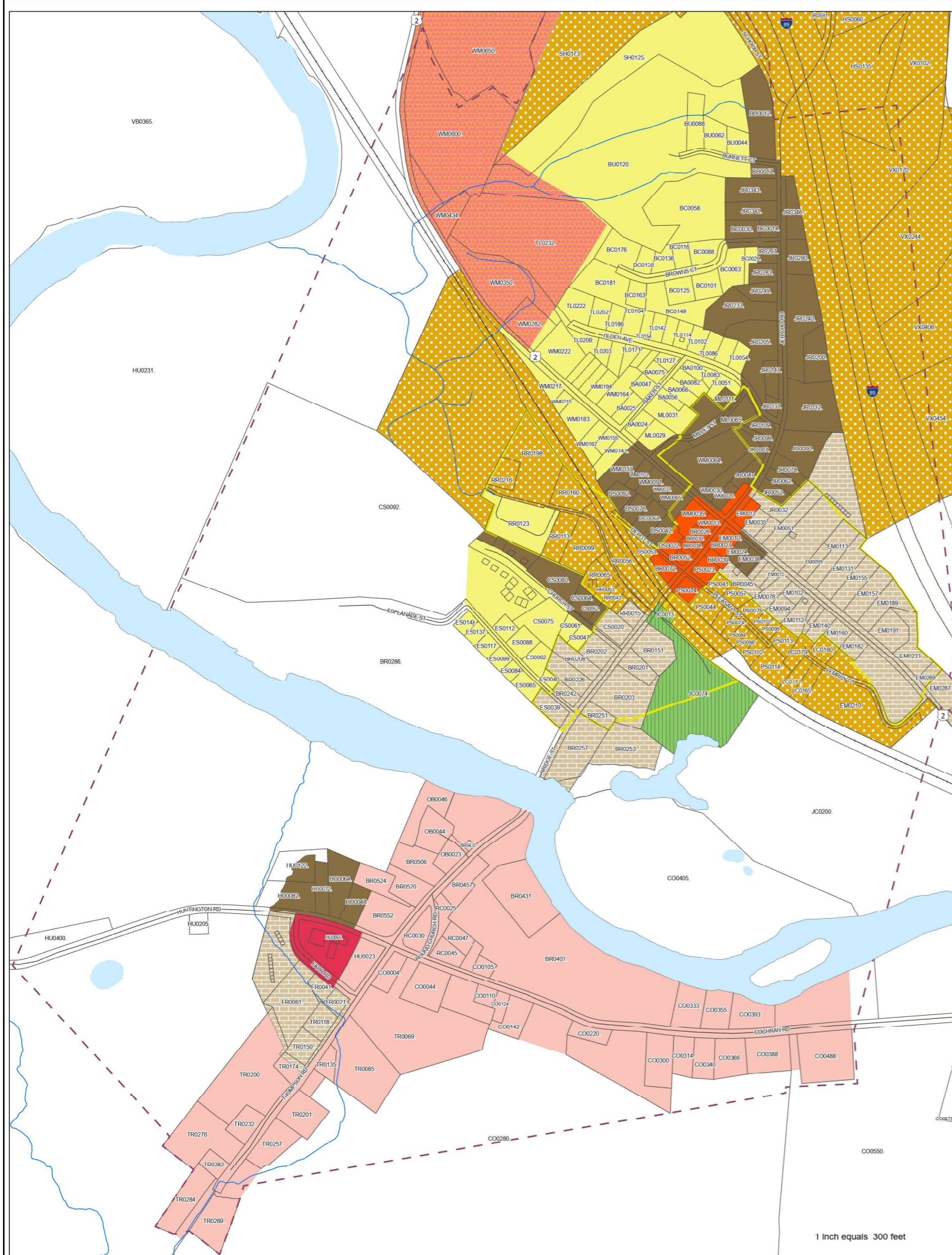


Official Zoning District Map Richmond, Vermont

Legend

- | | |
|--------------------------------------|----------------------------------|
| Proposed Zoning District Map 2/15/23 | Village Neighborhood North (VNN) |
| Current Residential/Commercial (RC) | Village Neighborhood South (VNS) |
| Mobile Home Park (MHP) | Jolina Court (JC) |
| Industrial/Commercial (IC) | Village Center |
| High Density Residential (HDR) | Road Centerline |
| Gateway Commercial/Residential (G) | Railroad |
| Commercial (C) | Stream Centerline |
| Agricultural/Residential (AR) | Water Body |
| Village Commercial (VC) | 2019 Tax Parcel Boundary |
| Village Downtown (VD) | Water Wastewater ServiceArea |
| Village Residential/Commercial (VRC) | |



Sources:
 Flood Hazard Overlay - FEMA Special Flood Hazard Area, 2014;
 Parcels - 2019 from VCGI
 Zoning - updated by CCRPC, January 2022
 Road Centerline - downloaded e911, March 2020
 All data is in State Plane Coordinate System, NAD 1983.

Disclaimer:
 This map is for planning purposes. The accuracy of information presented is determined by its sources. Errors and omissions may exist. The Chittenden County Regional Planning Commission is not responsible for these. Questions of on-the-ground location can be resolved by site inspections and/or surveys by a registered surveyor. This map is not sufficient for delineation of features on-the-ground. This map identifies the presence of features, and may indicate relationships between features, but is not a replacement for surveyed information or engineering studies.

