



Construction Update

Williston VT 2A and Industrial Ave Project [Williston STP 5500(17)]

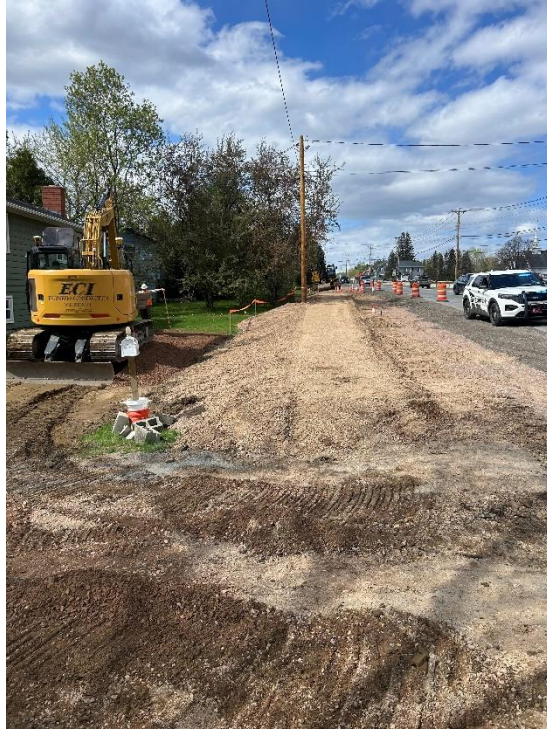
DATE: Friday, May 8, 2026

TRAFFIC IMPACT AND DURATION: From Monday, May 11, through Friday, May 15, between 9 a.m. and 3 p.m., the Vermont Route 2A (VT 2A) northbound lane between Mountain View Road/Industrial Ave and Bittersweet Circle will be closed, with alternating one-way traffic controlled by flaggers. **Motorists should expect major traffic delays and plan for extra travel time or seek alternate routes.**

Between 6:30 a.m. and 6 p.m., the VT 2A southbound right turn lane onto Industrial Avenue will be closed; drivers are still able to turn right onto Industrial Avenue from the existing VT 2A southbound through lane.

CONSTRUCTION ACTIVITIES: Construction activities will take place Monday through Friday between 6:30 a.m. and 6:00 p.m.

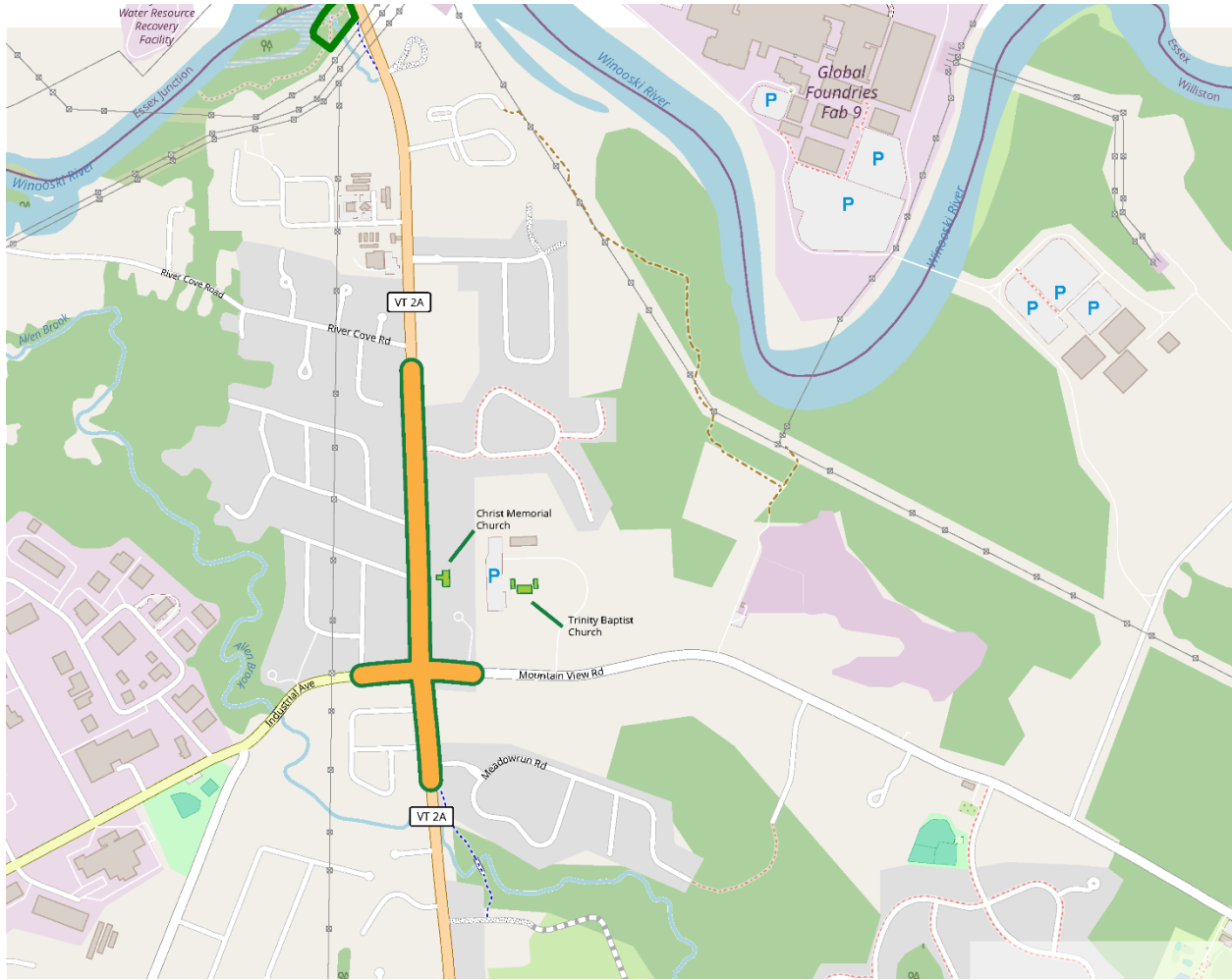
- On the west side of VT 2A, between Industrial Avenue and Hillside Drive, crews will complete grading work and are scheduled to begin paving next week. This work includes a sewer patch on Hillside Drive on Monday and placement of the base layer of asphalt mid-week. Crews will also saw cut and backfill driveway aprons in this area.
- At the northwest corner of the VT 2A and Industrial Avenue intersection, crews will conduct excavation and related work to prepare for the new bioretention pond.
- On the east side of VT 2A, between Mountain View Road and Bittersweet Circle, crews will conduct saw cutting of asphalt, roadway widening, and sewer installation.



Roadway widening efforts along the west side of VT 2A between Industrial Avenue and Hillside Drive in Williston, VT.



New sewer is installed and backfilled along Hillside Drive at the VT 2A intersection in Williston, VT.



LOCATION: The project limits (highlighted in orange above) include the 0.7-mile segment of Vermont Route 2A (VT 2A) in Williston, VT from Meadowrun Road to just south of River Cove Road, including its intersection with Industrial Avenue/Mountain View Road.

PROJECTED COMPLETION: Fall 2026

[PROJECT FACTSHEET](#)

[SIGN UP FOR EMAIL PROJECT UPDATES](#)

CONTACT US:

Elaine Ezerins
Public Information Consultant
(603) 782-2460
elaine.ezerins@wsp.com