



Construction Update

Williston VT 2A and Industrial Ave Project [Williston STP 5500(17)]

DATE: Friday, April 25, 2025

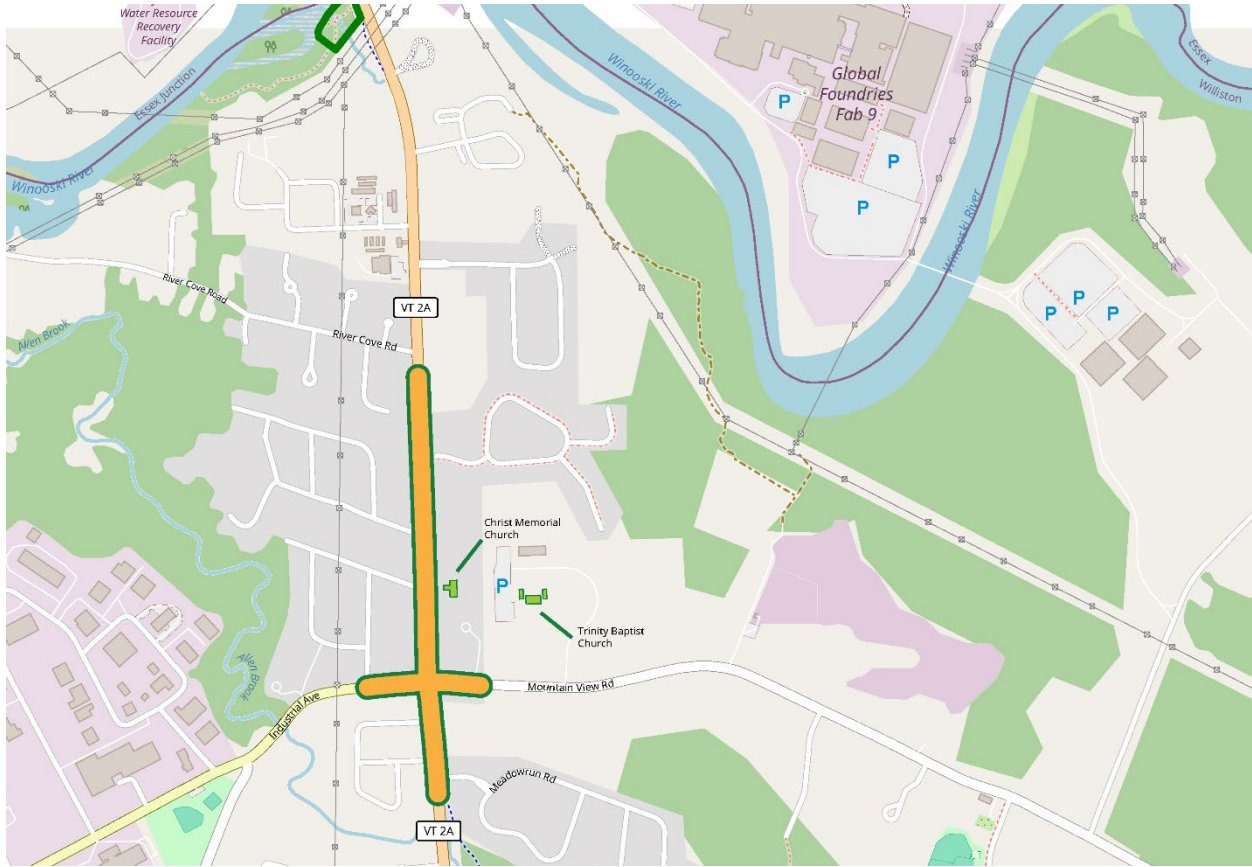
TRAFFIC IMPACT AND DURATION: From Monday, April 28, through Friday, May 2, daytime independent utility work will impact traffic, including shoulder or single lane closures with alternating one-way traffic controlled by flaggers. This will occur throughout the project limits, including on Industrial Avenue between Gail Terrace and Vermont Route 2A (VT 2A).

Motorcyclists and cyclists are advised that the northwest corner of the VT 2A and Industrial Ave intersection is a gravel surface. All travelers should slow down, use caution, and pay attention to flaggers, road signs, and changes in the roadway surface.

CONSTRUCTION ACTIVITIES: Next week, the contractor will conduct minimal construction activities while aerial utility companies work to relocate utilities within the project limits, including on Industrial Avenue between Gail Terrace and VT 2A. *The utility work is independent of the Williston VT 2A and Industrial Avenue Project.*



Vermont Gas Systems installs new gas services on Industrial Avenue between Gail Terrace and VT 2A.



LOCATION: The project limits (highlighted in orange above) include the 0.7-mile segment of Vermont Route 2A (VT 2A) in Williston, VT from Meadowrun Road to just south of River Cove Road, including its intersection with Industrial Avenue/Mountain View Road.

PROJECTED COMPLETION: Fall 2026

[PROJECT FACTSHEET](#)

[SIGN UP FOR EMAIL PROJECT UPDATES](#)

CONTACT US:

Elaine Ezerins
Public Information Consultant
(603) 782-2460
elaine.ezerins@wsp.com