

LEGEND

- DFIRM Panels
- DFIRM Floodways
- Flood Hazard Areas (Only FEM)**
 - AE (1-percent annual chance flood)
 - A (1-percent annual chance floodpl)
 - AO (1-percent annual chance zone feet)
 - 0.2-percent annual chance flood ha
- River Corridors (Aug 27, 2019)
 - .5 - 2 sqmi.
 - .25-.5 sqmi.
- River Corridor Easement
- Parcels (standardized)
- Roads**
 - Interstate
 - US Highway; 1
 - State Highway
 - Town Highway (Class 1)
 - Town Highway (Class 2,3)
 - Town Highway (Class 4)
 - State Forest Trail
 - National Forest Trail
 - Legal Trail
 - Private Road/Driveway
 - Proposed Roads
- Stream/River**
 - Stream
 - Intermittent Stream

1: 19,482
February 3, 2022



NOTES

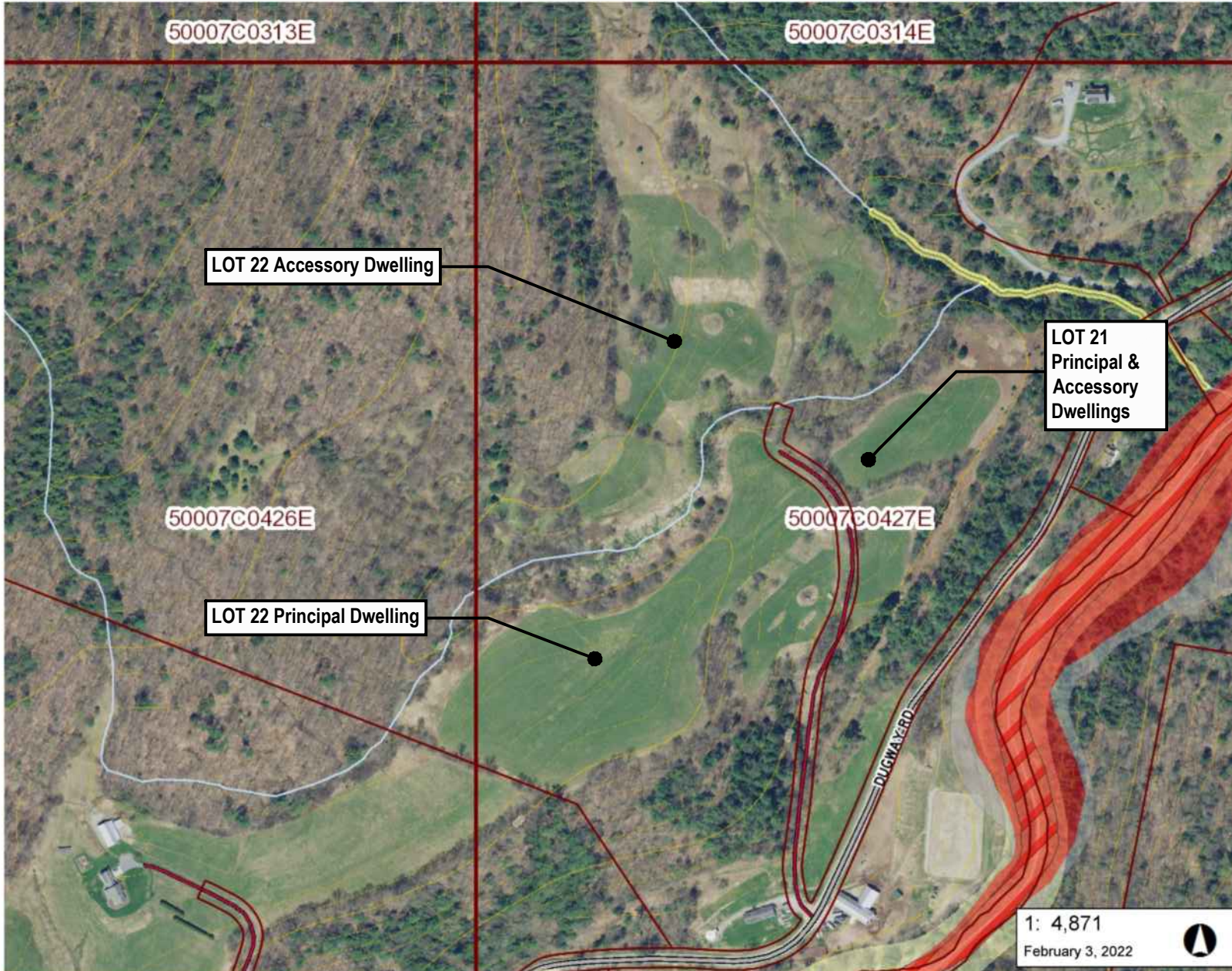
Map created using ANR's Natural Resources Atlas

990.0 0 495.00 990.0 Meters

WGS_1984_Web_Mercator_Auxiliary_Sphere
© Vermont Agency of Natural Resources

1" = 1624 Ft. 1cm = 195 Meters
THIS MAP IS NOT TO BE USED FOR NAVIGATION

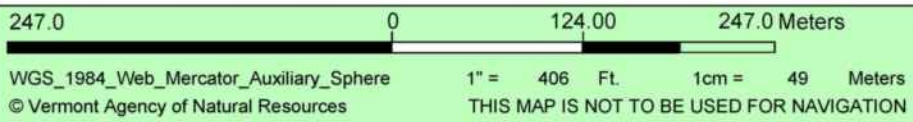
DISCLAIMER: This map is for general reference only. Data layers that appear on this map may or may not be accurate, current, or otherwise reliable. ANR and the State of Vermont make no representations of any kind, including but not limited to, the warranties of merchantability, or fitness for a particular use, nor are any such warranties to be implied with respect to the data on this map.



LEGEND

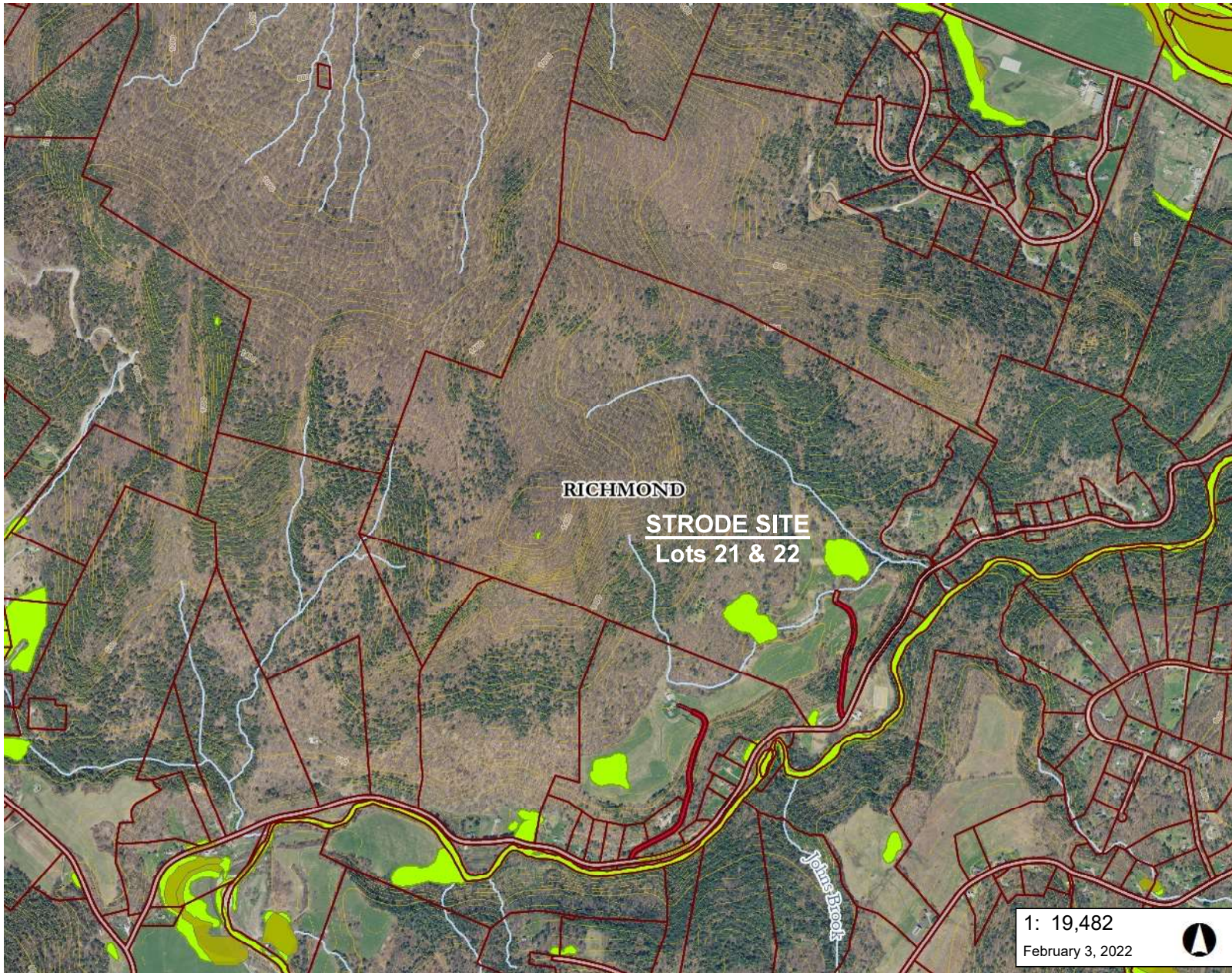
- DFIRM Panels
- DFIRM Floodways
- Flood Hazard Areas (Only FEM)**
- AE (1-percent annual chance flood)
- A (1-percent annual chance floodpl)
- AO (1-percent annual chance zone feet)
- 0.2-percent annual chance flood ha
- River Corridors (Aug 27, 2019)
- .5 - 2 sqmi.
- .25-.5 sqmi.
- River Corridor Easement
- Parcels (standardized)
- Roads**
- Interstate
- US Highway: 1
- State Highway
- Town Highway (Class 1)
- Town Highway (Class 2,3)
- Town Highway (Class 4)
- State Forest Trail
- National Forest Trail
- Legal Trail
- Private Road/Driveway
- Proposed Roads
- Stream/River**
- Stream
- Intermittent Stream

1: 4,871
February 3, 2022



DISCLAIMER: This map is for general reference only. Data layers that appear on this map may or may not be accurate, current, or otherwise reliable. ANR and the State of Vermont make no representations of any kind, including but not limited to, the warranties of merchantability, or fitness for a particular use, nor are any such warranties to be implied with respect to the data on this map.


NOTES
Map created using ANR's Natural Resources Atlas



LEGEND

- Wetland - VSWI**
 - Class 1 Wetland (Orange)
 - Class 2 Wetland (Yellow)
 - Buffer (Grey)
- Wetlands Advisory Layer (Light Green)
- Parcels (standardized) (White outline)
- Roads**
 - Interstate (Blue)
 - US Highway; 1 (Red)
 - State Highway (Green)
 - Town Highway (Class 1) (Grey)
 - Town Highway (Class 2,3) (Dark Grey)
 - Town Highway (Class 4) (Light Grey)
 - State Forest Trail (Dotted Grey)
 - National Forest Trail (Dotted Grey)
 - Legal Trail (Dark Red)
 - Private Road/Driveway (Dotted Grey)
 - Proposed Roads (Pink)
- Stream/River**
 - Stream (Blue)
 - Intermittent Stream (Light Blue)
- Town Boundary (White outline)

1: 19,482
February 3, 2022

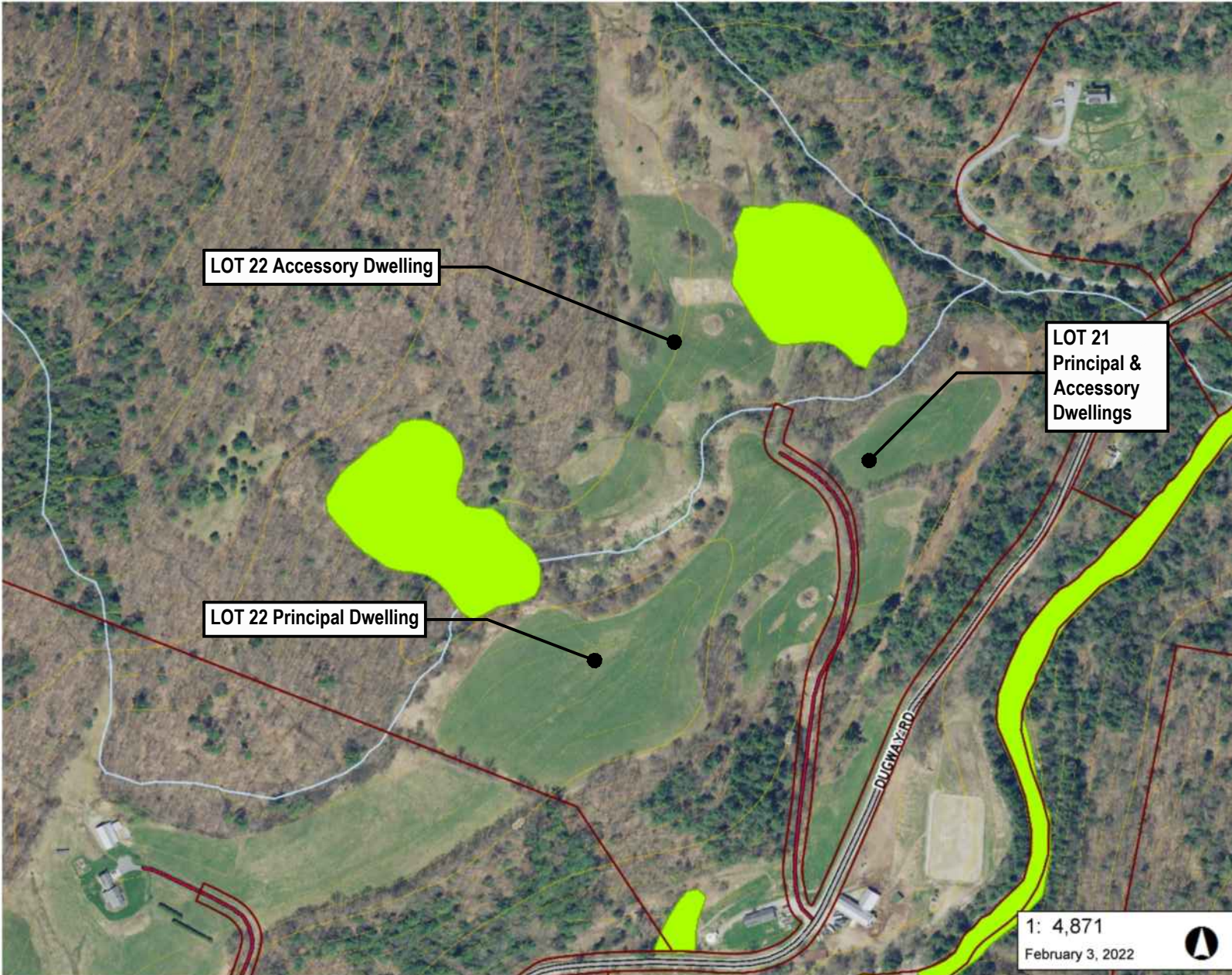


990.0 0 495.00 990.0 Meters
 WGS_1984_Web_Mercator_Auxiliary_Sphere 1" = 1624 Ft. 1cm = 195 Meters
 © Vermont Agency of Natural Resources THIS MAP IS NOT TO BE USED FOR NAVIGATION

DISCLAIMER: This map is for general reference only. Data layers that appear on this map may or may not be accurate, current, or otherwise reliable. ANR and the State of Vermont make no representations of any kind, including but not limited to, the warranties of merchantability, or fitness for a particular use, nor are any such warranties to be implied with respect to the data on this map.

NOTES

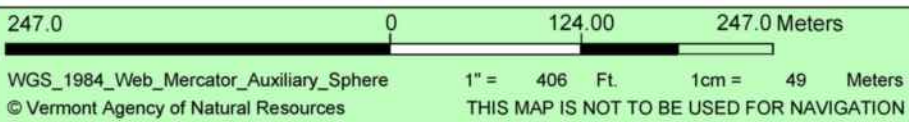
Map created using ANR's Natural Resources Atlas



LEGEND

- Wetland - VSWI
 - Class 1 Wetland
 - Class 2 Wetland
 - Buffer
 - Wetlands Advisory Layer
- Parcels (standardized)
- Roads
 - Interstate
 - US Highway; 1
 - State Highway
 - Town Highway (Class 1)
 - Town Highway (Class 2,3)
 - Town Highway (Class 4)
 - State Forest Trail
 - National Forest Trail
 - Legal Trail
 - Private Road/Driveway
 - Proposed Roads
- Stream/River
 - Stream
 - Intermittent Stream
- Town Boundary

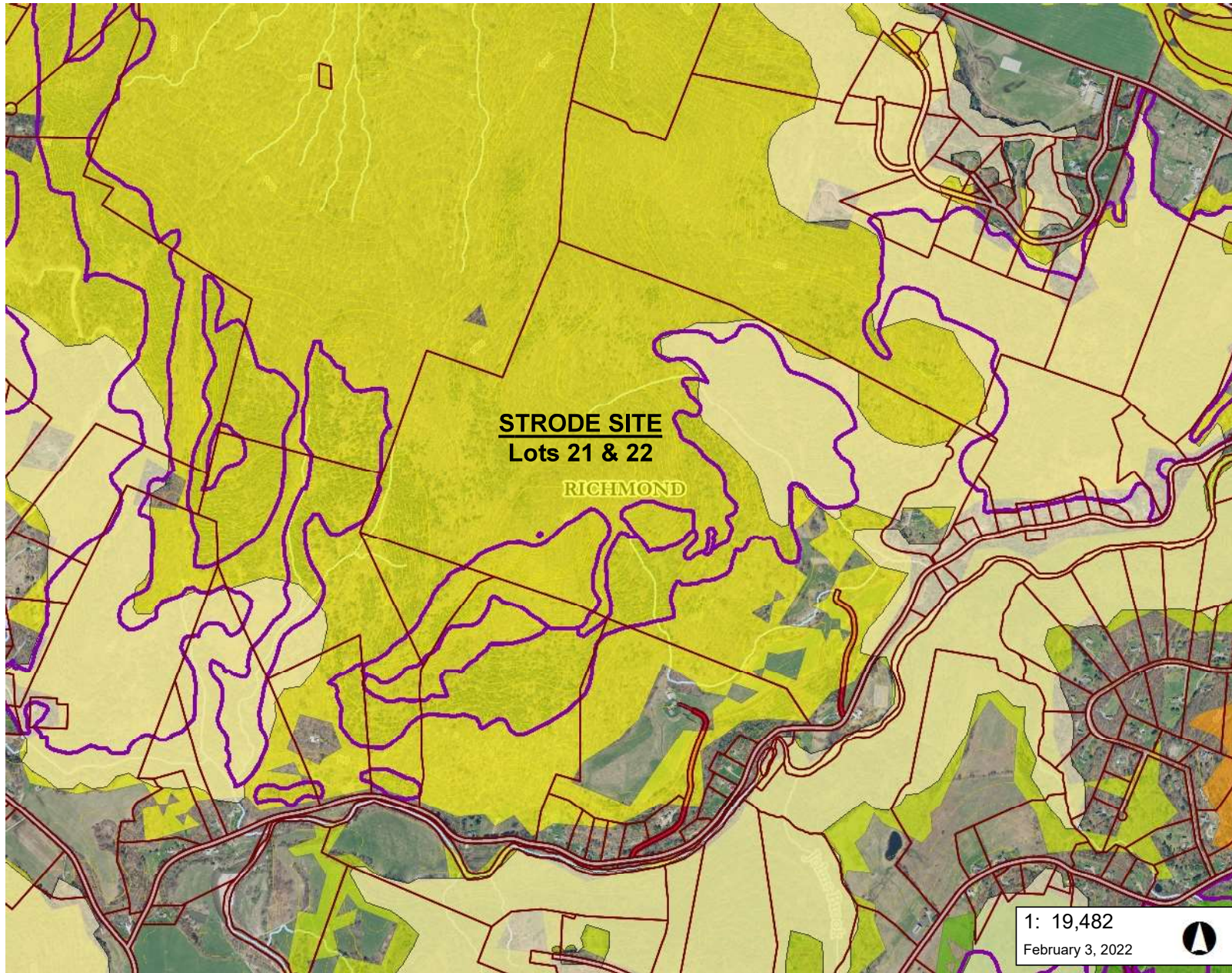
1: 4,871
February 3, 2022



DISCLAIMER: This map is for general reference only. Data layers that appear on this map may or may not be accurate, current, or otherwise reliable. ANR and the State of Vermont make no representations of any kind, including but not limited to, the warranties of merchantability, or fitness for a particular use, nor are any such warranties to be implied with respect to the data on this map.

NOTES

Map created using ANR's Natural Resources Atlas



LEGEND

- Rare Threatened Endangered
 - Threatened or Endangered (Red hatched box)
 - Rare (Green hatched box)
- Significant Natural Community (Purple outline)
- Deer Wintering Areas (Light tan fill)
- Habitat Blocks (Color scale 0-10)
 - 10 - Higher Priority (Dark green)
 - 9 (Medium-dark green)
 - 8 (Medium green)
 - 7 (Light green)
 - 6 (Yellow-green)
 - 5 (Yellow)
 - 4 (Light orange)
 - 3 (Orange)
 - 2 (Dark orange)
 - 1 - Lower Priority (Red-orange)
 - 0 (Red)
- Parcels (standardized) (White outline)
- Roads
 - Interstate (Thick blue line)
 - US Highway; 1 (Thick red line)
 - State Highway (Thick green line)
 - Town Highway (Class 1) (Thin grey line)
 - Town Highway (Class 2,3) (Thin grey line)
 - Town Highway (Class 4) (Thin grey line)
 - State Forest Trail (Dashed grey line)
 - National Forest Trail (Dashed grey line)
 - Local Trail (Thin grey line)

1: 19,482
February 3, 2022

990.0 0 495.00 990.0 Meters

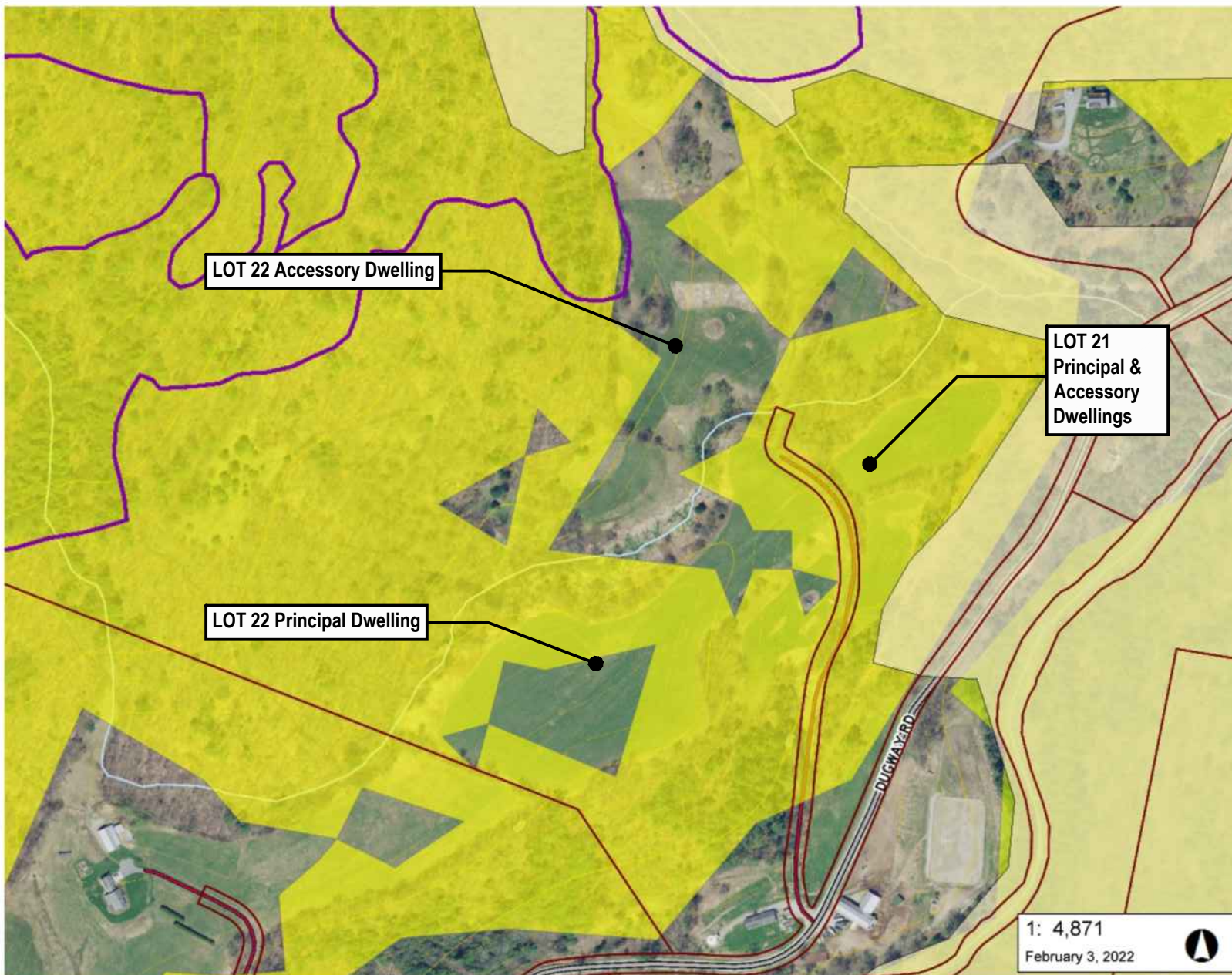
WGS_1984_Web_Mercator_Auxiliary_Sphere
© Vermont Agency of Natural Resources

1" = 1624 Ft. 1cm = 195 Meters
THIS MAP IS NOT TO BE USED FOR NAVIGATION

DISCLAIMER: This map is for general reference only. Data layers that appear on this map may or may not be accurate, current, or otherwise reliable. ANR and the State of Vermont make no representations of any kind, including but not limited to, the warranties of merchantability, or fitness for a particular use, nor are any such warranties to be implied with respect to the data on this map.

NOTES

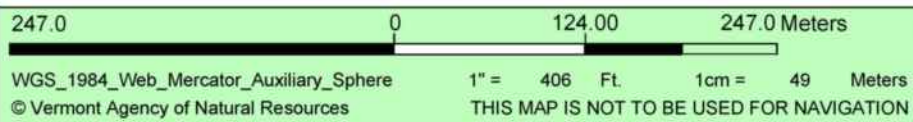
Map created using ANR's Natural Resources Atlas



LEGEND

- Rare Threatened Endangered
 - Threatened or Endangered
 - Rare
- Significant Natural Community
- Deer Wintering Areas
- Habitat Blocks
 - 10 - Higher Priority
 - 9
 - 8
 - 7
 - 6
 - 5
 - 4
 - 3
 - 2
 - 1 - Lower Priority
 - 0
- Parcels (standardized)
- Roads
 - Interstate
 - US Highway, 1
 - State Highway
 - Town Highway (Class 1)
 - Town Highway (Class 2,3)
 - Town Highway (Class 4)
 - State Forest Trail
 - National Forest Trail
 - Local Trail

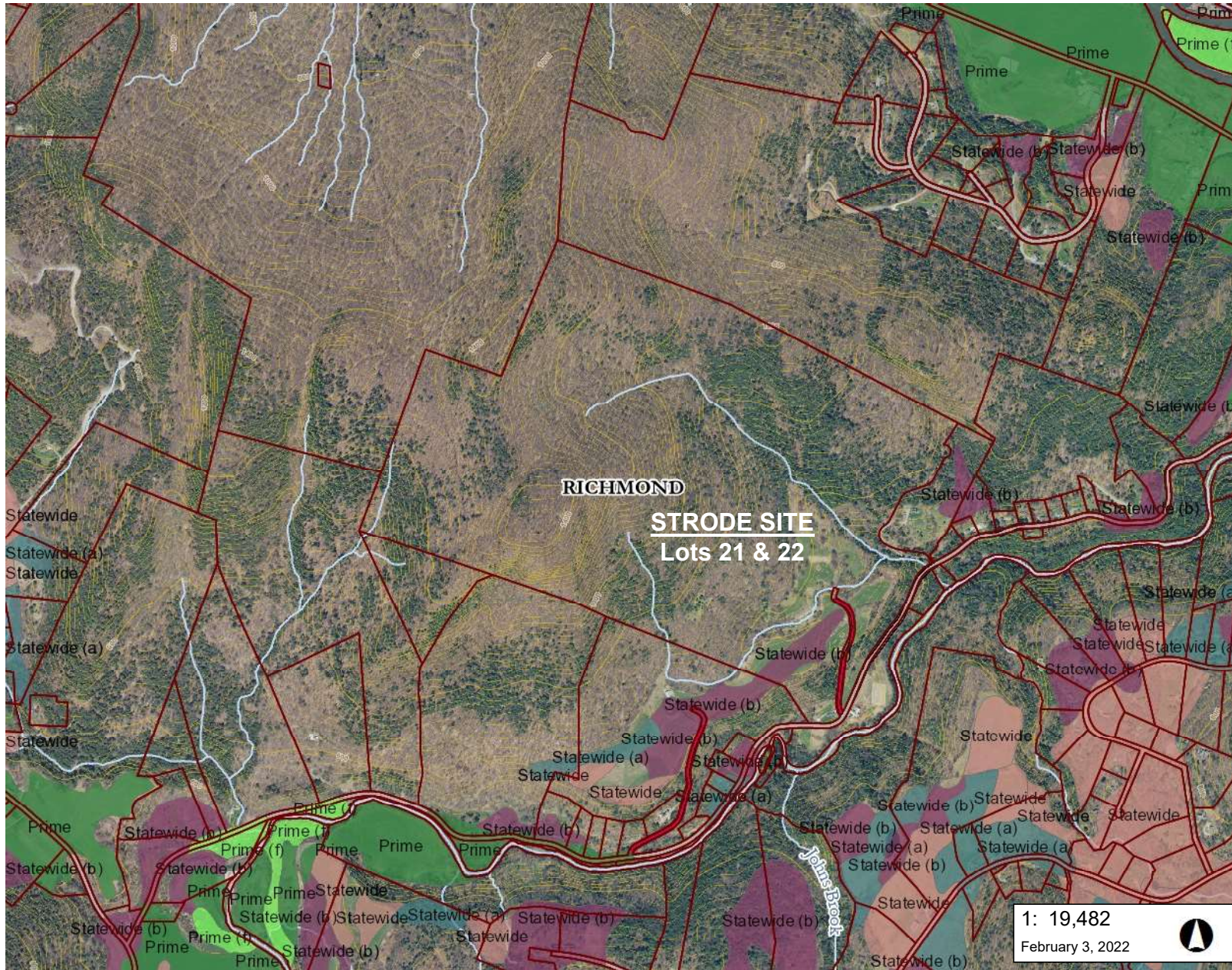
1: 4,871
February 3, 2022



DISCLAIMER: This map is for general reference only. Data layers that appear on this map may or may not be accurate, current, or otherwise reliable. ANR and the State of Vermont make no representations of any kind, including but not limited to, the warranties of merchantability, or fitness for a particular use, nor are any such warranties to be implied with respect to the data on this map.

NOTES

Map created using ANR's Natural Resources Atlas



LEGEND

Soils - Prime Agricultural

- Local
- Local (b)
- Not rated
- Prime
- Prime (b)
- Prime (f)
- Statewide
- Statewide (a)
- Statewide (b)
- Statewide (c)

Parcels (standardized)

Roads

- Interstate
- US Highway; 1
- State Highway
- Town Highway (Class 1)
- Town Highway (Class 2,3)
- Town Highway (Class 4)
- State Forest Trail
- National Forest Trail
- Legal Trail
- Private Road/Driveway
- Proposed Roads

Stream/River

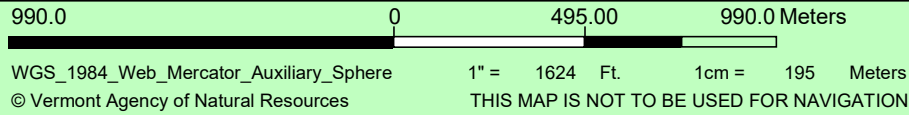
- Stream
- Intermittent Stream

Town Boundaries

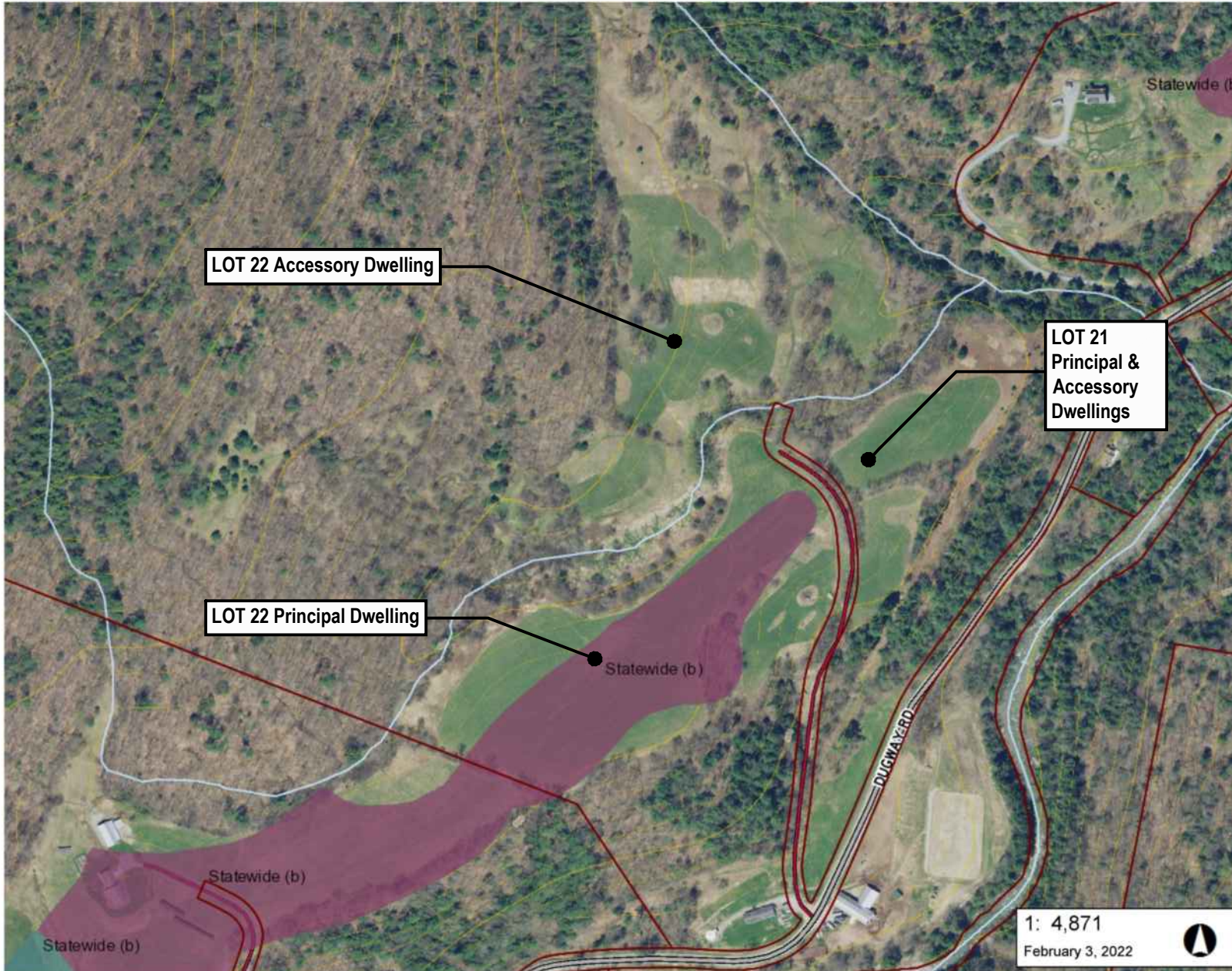
NOTES

Map created using ANR's Natural Resources Atlas

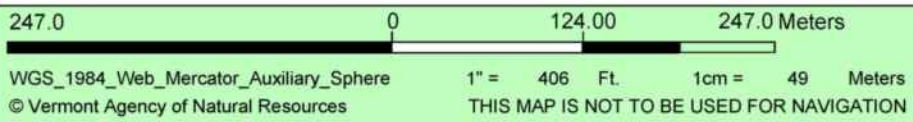
1: 19,482
February 3, 2022



DISCLAIMER: This map is for general reference only. Data layers that appear on this map may or may not be accurate, current, or otherwise reliable. ANR and the State of Vermont make no representations of any kind, including but not limited to, the warranties of merchantability, or fitness for a particular use, nor are any such warranties to be implied with respect to the data on this map.



1: 4,871
February 3, 2022



DISCLAIMER: This map is for general reference only. Data layers that appear on this map may or may not be accurate, current, or otherwise reliable. ANR and the State of Vermont make no representations of any kind, including but not limited to, the warranties of merchantability, or fitness for a particular use, nor are any such warranties to be implied with respect to the data on this map.

NOTES

Map created using ANR's Natural Resources Atlas