

LANDSCAPE PLANTING SCHEDULE

QTY	BOTANICAL NAME	COMMON NAME	SIZE
DECIDUOUS TREES			
1	BETULA Papyrifera	WHITE BIRCH	CLUMP 8'-10" HT.
SHRUBS			
3	Hamamelis virginiana	AMERICAN WITCH HAZEL	30"-36" HT, 7 GAL.
1	Syringa vulgaris	COMMON PURPLE LILAC	30"-36" HT, 7 GAL.
1	Vaccinium corymbosum	HIGHBUSH BLUEBERRY	30"-36" HT, 7 GAL.
15	Ilex glabra "compacta"	COMPACT INKBERRY	24"-30" HT, 5 GAL.
8	Rhododendron "PJM Elite"	PJM RHODOENDRON	24"-30" HT, 5 GAL.
8	Ilex verticillata "winter red"	WINTER RED WINTERBERRY	24"-30" HT, 5 GAL.
3	Cornus stolonifera	RED TWIG DOGWOOD	24"-30" HT, 5 GAL.
5	Forstythia x intermedia	FORSTYTHIA	24"-30" HT, 5 GAL.
PERENNIALS			
70	Pennisetum alopecuroides	DIARY FOUNTAIN GRASS	12"-18" HT, 2 GAL.
34	Rudbeckia fulgida	BLACK EYED SUSAN	12"-18" HT, 2 GAL.
14	Echinacea purpurea	PURPLE CONEFLOWER	12"-18" HT, 2 GAL.

LANDSCAPE NOTES

- THE NUMBER OF EACH INDIVIDUAL PLANT TYPE AND SIZE IS PROVIDED IN THE PLANT LIST FOR CONTRACTORS CONVENIENCE ONLY. IF A DISCREPANCY EXISTS BETWEEN THE NUMBER OF PLANTS ON THE LIST AND THE NUMBER SHOWN ON THE DRAWING, THE GREATER NUMBER SHALL APPLY.
- THE CONTRACTOR SHALL SUPPLY PLANT MATERIAL IN QUANTITIES SUFFICIENT TO COMPLETE THE PLANTING AS SHOWN.
- ALL PLANT MATERIAL SHALL BE APPROVED BY THE LANDSCAPE ARCHITECT OR THE OWNER'S REPRESENTATIVE PRIOR TO ARRIVAL ON SITE.
- ALL PLANT BEDS WILL BE TOP DRESSED WITH 3" SIERRED BARK MULCH.
- THE CONTRACTOR SHALL LOCATE AND MARK ALL UTILITIES PRIOR TO PLANTING. ANY CONFLICTS BETWEEN PLANTING AND UTILITIES SHALL BE IMMEDIATELY REPORTED TO THE OWNER SO THAT ALTERNATIVE PLANTING LOCATIONS CAN BE DETERMINED.
- SUBSTITUTION OF PLANT MATERIALS IS ALLOWED WITH WRITTEN APPROVAL OF THE OWNER OR LANDSCAPE ARCHITECT.
- THE CONTRACTOR SHALL BE RESPONSIBLE FOR PROTECTING ALL PLANTS AGAINST DAMAGE FROM ON-GOING CONSTRUCTION. PROTECTION SHALL BEGIN AT THE TIME THE PLANT IS INSTALLED AND CONTINUE UNTIL FORMAL ACCEPTANCE OF ALL PLANTINGS.
- ALL OTHER DISTURBED AREAS NOT OTHERWISE INDICATED SHALL BE LOAMED AND SEEDED.
- CONTRACTOR SHALL PRESERVE EXISTING TREES AND EXISTING PLANTINGS WHERE INDICATED.
- CONTRACTOR SHALL PROVIDE A 2-YEAR GUARANTEE ON ALL INSTALLED PLANT MATERIAL.
- ALL PROPOSED TREES SHALL BE PLACED A MINIMUM OF 10FT FROM EXISTING AND PROPOSED UTILITIES.
- ALL TREES SPECIFIED WILL BE OF GOOD QUALITY AND IN COMPLIANCE WITH THE MOST RECENT EDITION OF ANSI Z601 AMERICAN STANDARD FOR NURSERY STOCK PUBLISHED BY AMERICANOR.
- SPECIAL ATTENTION SHALL BE PAID TO THE SITE PREPARATION AND SOILS FOR ALL PLANTING AREAS TO ENSURE THE HEALTHY AND VIGOROUS GROWTH OF PLANTINGS (ESPECIALLY TREES AND SHRUBS). CONTRACTOR SHALL PROVIDE ADEQUATE SOIL VOLUMES AS DEPICTED IN THE TREE AND SHRUB PLANTING DETAILS HEREIN.
- OWNER SHALL OBTAIN AN EASEMENT AND PERMISSION FOR CONTRACTOR ACTIVITIES WITHIN ADJACENT LOT. THIS INCLUDES ALL SITE LANDSCAPING IMPROVEMENTS ALONG THE PROPERTY LINE, FENCE REMOVAL, AND NEW FENCING WORK AS SHOWN ON THE PLAN.
- CONTRACTOR SHALL USE WHITE TRAFFIC PAINT FOR ALL NEW PAVEMENT MARKINGS. CONTRACTOR SHALL ALSO REINSTALL ALL CURBSTOPS AND PAINT CURBSTOPS WHITE.

MINIMUM LANDSCAPING COSTS:

SECTION 5.3.3 (b) PART (v) INCLUDES MINIMUM LANDSCAPING COSTS. THE MINIMUM DIRECT LANDSCAPING COST SHALL BE AT LEAST EQUAL TO THE TOTAL PROJECT CONSTRUCTION COST MULTIPLIED BY A CERTAIN PERCENTAGE PER THE FOLLOWING SCHEDULE:

REQUIRED LANDSCAPE COST:	PERCENTAGE	MINIMUM:	ESTIMATE OF PROPOSED LANDSCAPE:
CONSTRUCTION COST			PLANTINGS INSTALLED: \$ 15,000
\$0 - \$250,000	3%	\$ 7,500	INSTALL STEEL EDGING: \$ 1,500
Not \$250,000	2%	\$ 5,000	LAWNS AND GRASSES: \$ 500
Excess OVER \$500,000	1%	\$ 5,000	

MINIMUM FIGURES SHOWN ARE BASED ON A TOTAL PROJECT CONSTRUCTION COST OF \$200,000.

\$ 15,500 MINIMUM	\$ 17,000 PROPOSED
-------------------	--------------------

PARKING REQUIREMENTS:

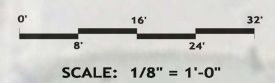
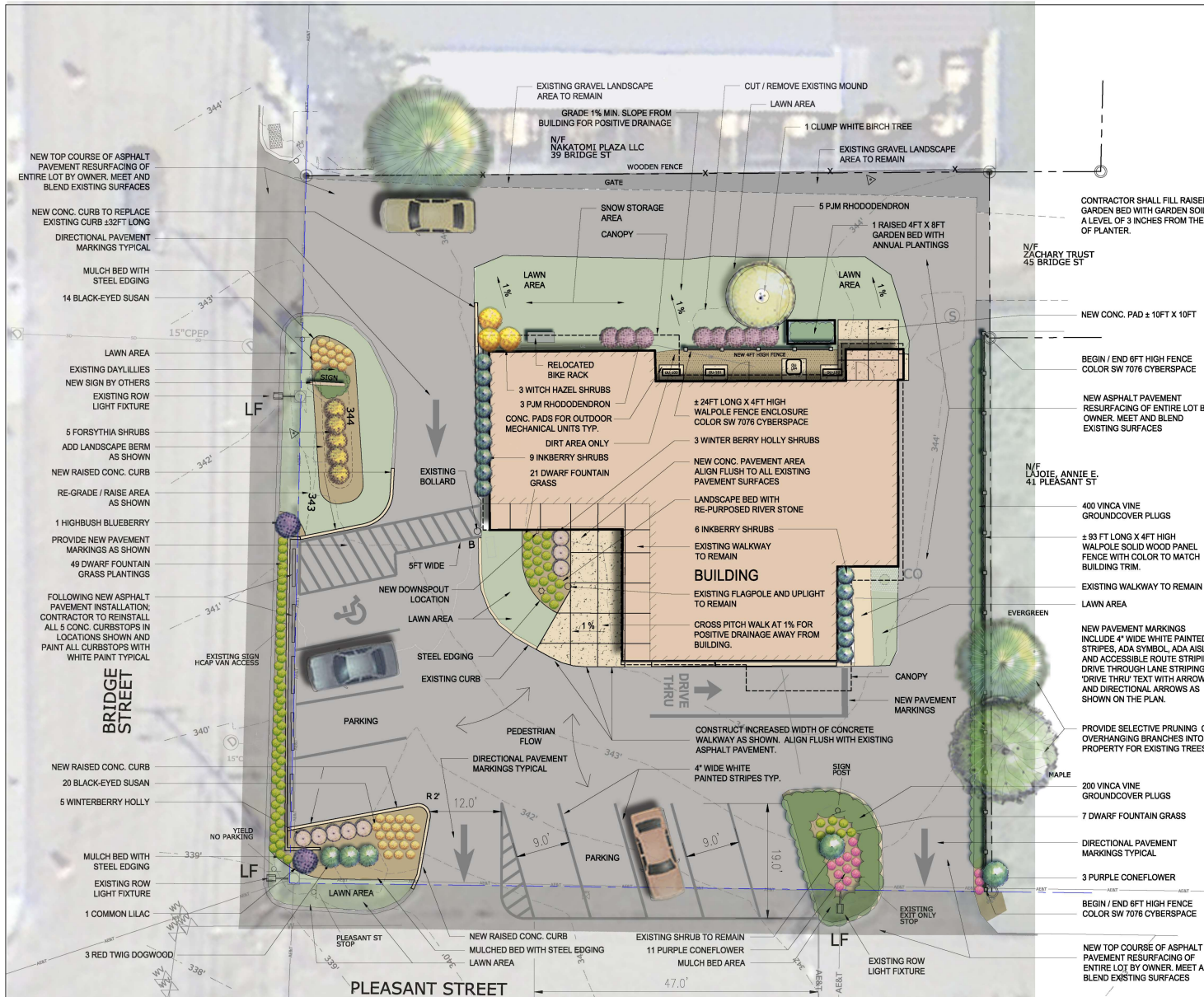
SECTION 6.1.2.C INCLUDES THE REQUIRED NUMBER OF OFF-ROAD OR HIGHWAY PARKING SPACES AS FOLLOWS:

BANK USE = 3.3 SPACES PER 1,000 SF GFA (SQUARE FEET OF GROSS FLOOR AREA)

SF GROSS FLOOR AREA	3.3 SPACES PER 1,000 SF GFA	REQUIRED PARKING SPACES	PROVIDED
±2,400 SF	+ 1,000 X 3.3	7.92	9

TIME PERIOD FOR COMPLETION OF PROJECT:

DURATION FOR CONSTRUCTION FOR EXTERIOR IMPROVEMENTS WILL BE APPROXIMATELY 30-45 DAYS TOTAL
 PROJECT START: APRIL 2023 PROJECT COMPLETION: AUGUST 2023



DRAFT
 PERMIT SUBMISSION

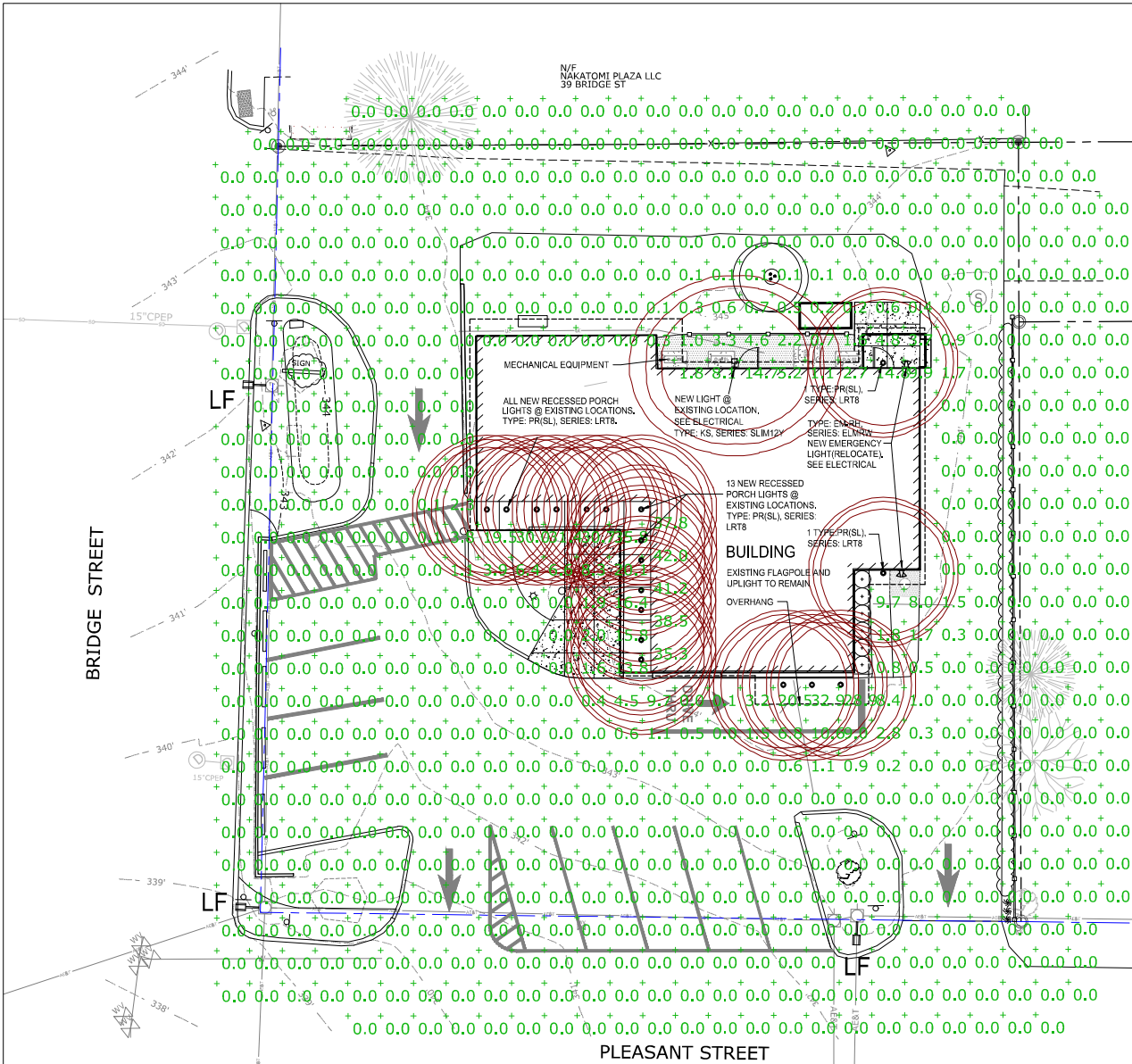


ParkArchitecture.com
 3 School House Lane, Suite #1 Etna NH
 Tel: 603-643-3400 Mobile: 603-905-0467



Northfield Savings Bank
 PROPOSED LANDSCAPE PLAN
 JANUARY 13, 2023 (COLOR VERSION)

Drawing No.
L202
 PERMIT SUBMISSION



LF = EXISTING ROW LIGHT FIXTURE

NOTE:
SEE ARCHITECTURAL PLAN A151 FOR EXTERIOR LIGHTING BUILDING PLAN AND EXTERIOR LIGHTING LEGEND

N/F ZACHARY TRUST
45 BRIDGE ST

3 DRIVE-THRU LIGHTS REPLACED AND RELOCATED WITH RECESSED FIXTURES
TYPE PR(SL), SERIES: LRT8

EXTERIOR LIGHTING LEGEND

- TYPE: PR(SL), SERIES: LRT8, RECESSED SECURITY LIGHT, SEE SPECIFICATIONS.
- ⊞ TYPE: KS, SERIES: SLIM12Y, SCONCE, SEE SPECIFICATIONS.
- ⊞ TYPE: EM-RH, SERIES: ELMRW (EXTERIOR) EMERGENCY LIGHT, SEE SPECIFICATIONS.

Symbol	Label	QTY	Manufacturer	Catalog Number	Description	Lamp	Filename	Lenses per Lamp	LLF	Wattage	Distrib	Polar Plot
⊞	KS	1	ILP	SWP-2L-U-30-BR2	Wall Fctc. mounted at 7ft	LED	SWP-2L-U-40-BR2.ies	2648	0.7	12		Max: 100cd
○	PR	18	Indy	LRT8 15LM 30K 120 GR BSCR E21 HM VH	INDY Bin Retrofit Downlight mounted at 10ft	LED	LRT8 13LM 25K WOLGT G4 BOCR1 2T HM CS.ies	1395	1	54.7	DIRECT, SC=0.64, SC=90=0.64	Max: 196cd

N/F LAJOLE ANNIE E.
41 PLEASANT ST

ILLUMINATION LEVELS:

SECTION 4.103 INCLUDES STANDARD MINIMUM ILLUMINATION LEVELS FOR SECURITY AND PARKING AREA LIGHTING WITH A MINIMUM OF 0.2 FC IN THE (VD) VILLAGE DOWNTOWN DISTRICT.

EXISTING RECESSED LIGHTING WITHIN CANOPIES AND ONE EXISTING SCONCE LIGHT SHALL BE REMOVED AND REPLACED WITH NEW LED LIGHTING. ALL LIGHTING FIXTURES PROPOSED ARE DOWNCASTING, CUT-OFF FIXTURES AS DEPICTED BY IESNA MEETING REQUIREMENTS OF SECTION 4.103.

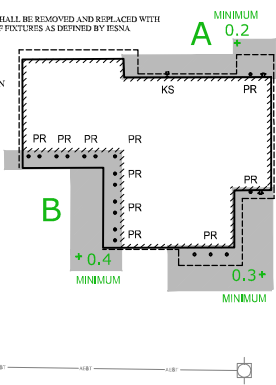
AREA MINIMUM ILLUMINATION LEVELS:

AREA A	AREA B	AREA C	} ALL AREAS SHOWN WITH MIN. 0.2 FC
0.2	0.4	0.3	

LIGHTING NOTES:

NOTE: NO NEW POST LIGHTING FOR THE PARKING AREA IS PROPOSED. THE CURRENT PARKING AREA IS WELL LIT BY A SCATTERING LED FIXTURES AFFIXED TO THE TELEPHONE POLES ALONG THE PROPERTY LINE AND WITHIN THE ROW. (SEE LF ON PLAN)

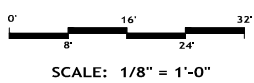
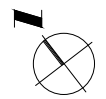
SECTION 4.101 ENCOURAGES PROPERTY OWNERS AND APPLICANTS TO USE THE MINIMUM LIGHT LEVELS NEEDED FOR THE USE AND AVOID COMPETITIVE LIGHTING, IN WHICH ONE SOURCE OF LIGHTING IS INCREASED IN ILLUMINATION TO OUTSHINE A NEIGHBORING SOURCE. THE INTRODUCTION OF POST LIGHTING FOR THE PARKING SPACES IS UNNECESSARY WHEN ADJACENT LED POST LIGHTING ALONG THE PROPERTY LINE AND WITHIN THE RIGHT-OF-WAY CURRENTLY EXISTS. THE 3 EXISTING LIGHT FIXTURES (LFP) ARE ADJACENT TO ILLUMINATE THE 9 PARKING SPACES. FURTHER, THE INTRODUCTION OF ADDITIONAL POST LIGHTING ADJACENT TO THESE PARKING SPACES IS DISCOURAGED UNDER SECTION 4.101 OF THE GENERAL GUIDELINE AS IT WOULD COMPLETE WITH OR OUTSHINE A NEIGHBORING SOURCE.



NOTES:

1. LIGHTING DESIGN BY VISIBLE LIGHT, INC.
2. FIXTURE SYMBOLS ARE NOT TO SCALE
3. ALL FIXTURES SHALL MEET IESNA QUALIFICATIONS.
4. REFER TO ELECTRICAL PLANS FOR ADDITIONAL INFORMATION ON LIGHT SPECIFICATIONS & LOCATIONS
5. (SL) = SECURITY LIGHT TO REMAIN ON 24/7 365 DAYS, SEE ELECTRICAL PLANS.

Lighting by: Heidi G. Connors
Visible Light, Inc.
24 Stickney Terrace
Suite 6
Hampton, NH 03842



DRAFT
PERMIT SUBMISSION



ParkArchitecture.com
3 School House Lane, Suite #1 Etna NH
Tel: 603-443-3400 Mobile: 617-398-0167

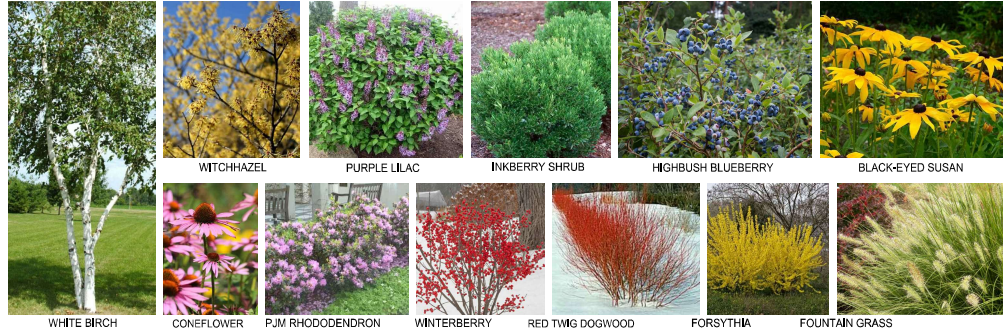


Northfield Savings Bank
OUTSIDE LIGHTING PLAN
JANUARY 13, 2023

Drawing No.

L301
PERMIT SUBMISSION

PROPOSED PLANT MATERIAL IMAGES:

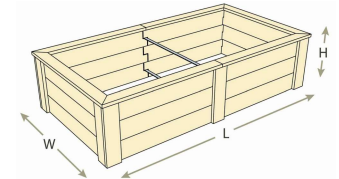


CEDAR RAISED GARDEN BEDS

NOT TO SCALE



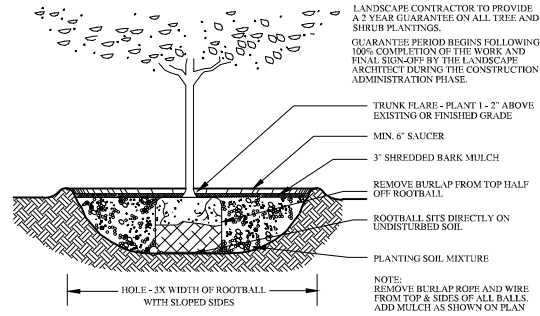
NOTES:
 CONTRACTOR SHALL SUPPLY CEDAR RAISED GARDEN BEDS IN LOCATIONS SHOWN ON THE PLAN.
 PRODUCT DIMENSIONS:
 WIDTH: 4 FEET
 LENGTH: 8 FEET
 HEIGHT: 22 INCHES
 CONTRACTOR SHALL INCLUDE EARTH EASY TRIM PACK.
 PROVIDE SHOP DRAWING OF MATERIALS AND INSTALLATION FOR APPROVAL PRIOR TO MATERIALS ORDERING AND INSTALLATION. BEDS SHALL BE BY EARTH EASY OR APPROVED EQUAL.
 VISIT: WWW.EARTHEASY.COM
 SEE PLAN FOR RAISED BED LOCATION
 CONTRACTOR TO FILL RAISED GARDEN BED WITH GARDEN SOIL TO A LEVEL OF 3 INCHES FROM TOP OF GARDEN PLANTER.



QUANTITY OF RAISED GARDEN BEDS: 1

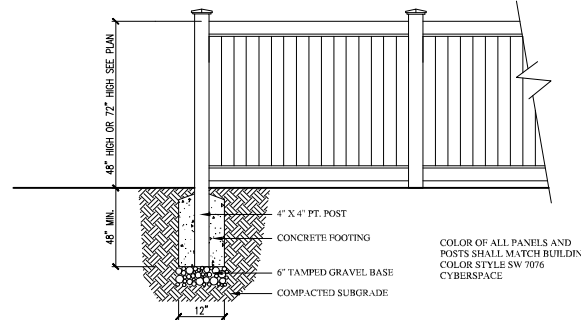
TREE PLANTING DETAIL

NOT TO SCALE



4FT OR 6FT HIGH SOLID WOOD PANEL FENCE

NOT TO SCALE



NOTES:

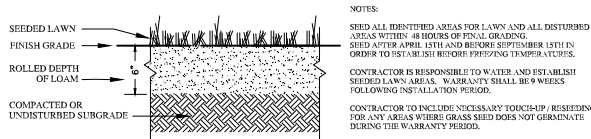
- SOLID PANEL WOOD FENCE SHALL BE SUPPLIED BY WALPOLE OUTDOORS OR APPROVED EQUAL. PLAN INCLUDES BOTH 4FT HIGH FENCE AND A 6FT HIGH FENCE (SEE PLAN)
- CONTRACTOR TO PROVIDE SHOP DRAWING TO LANDSCAPE ARCHITECT FOR APPROVAL PRIOR TO ORDERING OF MATERIALS AND INSTALLATION.
- ALL NAILS AND HARDWARE TO BE HOT DIPPED GALVANIZED.
- WOOD PANELS TO BE HUNG WITH UNIFORM HEIGHT AND SPACING.
- POSTS TO BE SPACED 6FT O.C. AND/OR AS SHOWN ON PLAN. LENGTH OF FENCE AS SHOWN ON PLAN.
- WOOD MATERIAL SHALL BE CEDAR OR APPROVED SUBSTITUTION.
- CONTRACTOR SHALL PAINT FENCE: COLOR STYLE SW 7076 CYBERSPACE.



COLOR: SW 7076 CYBERSPACE

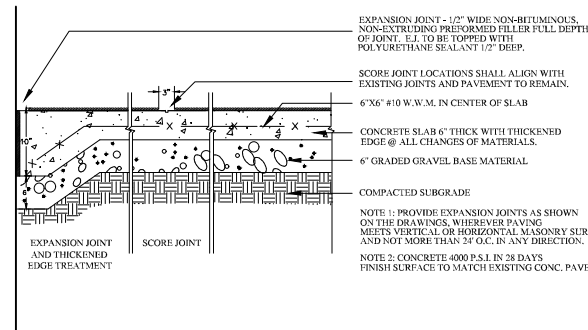
TURF PLANTING DETAIL

NOT TO SCALE



CONCRETE PAVING / JOINT TREATMENT DETAIL

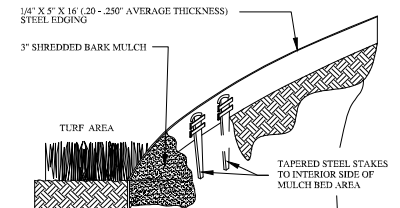
SCALE: NTS



STEEL LANDSCAPE EDGING

NOT TO SCALE

STEEL LANDSCAPE EDGING AS MANUFACTURED BY: SURE-LOC ALUMINUM EDGING CORPORATION - HOLLAND MI TEL: 1-800-767-3562 OR APPROVED EQUAL.

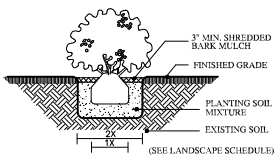


NOTES:

- INSTALLATION TO BE COMPLETED IN ACCORDANCE WITH MANUFACTURER'S SPECIFICATIONS.
 SEE LANDSCAPE PLAN FOR LOCATION OF LAWN VS. MULCHED BED AREAS AND PLACEMENT OF STEEL EDGING.
 CONTRACTOR TO PROVIDE SHOP DRAWING TO LANDSCAPE ARCHITECT FOR APPROVAL PRIOR TO MATERIALS ORDERING AND INSTALLATION.

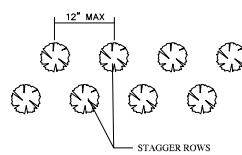
SHRUB PLANTING DETAIL

NOT TO SCALE



GROUND COVER SPACING

NOT TO SCALE



DRAFT
 PERMIT SUBMISSION



ParkArchitecture.com
 3 School House Lane, Suite #1 Etna NH
 Tel: 603-413-3400 Mobile: 617-398-0467



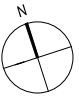
Northfield Savings Bank
LANDSCAPE DETAILS

JANUARY 13, 2023

Drawing No.

L401

PERMIT SUBMISSION

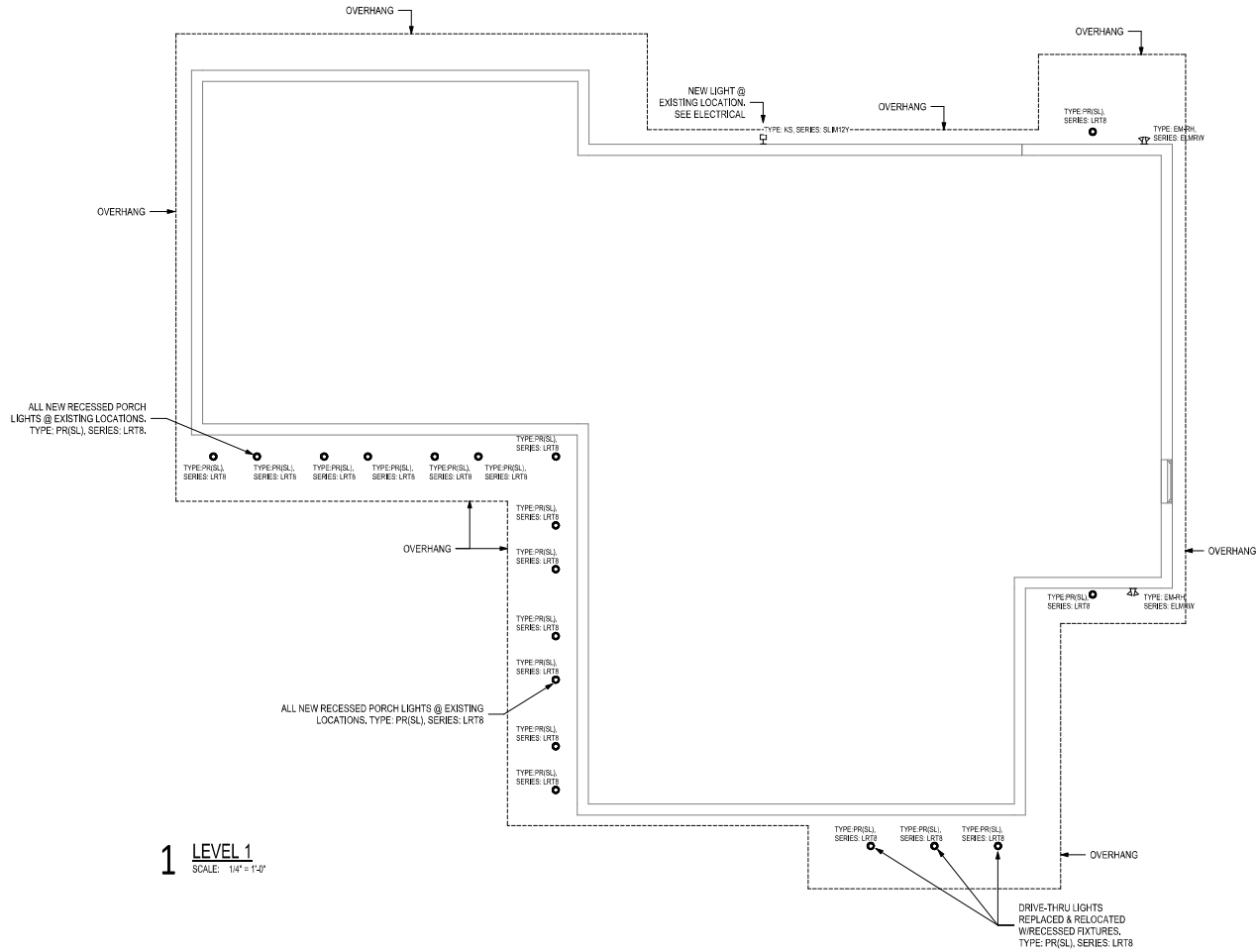


EXTERIOR LIGHTS LEGEND

- TYPE: PR(SL), SERIES: LRT8, RECESSED SECURITY LIGHT, SEE SPECIFICATIONS.
- TYPE: KS, SERIES: SLIM12Y, SCENCE, SEE SPECIFICATIONS.
- ⚡ TYPE: EM-RH, SERIES: ELMRW (EXTERIOR) EMERGENCY LIGHT, SEE SPECIFICATIONS.

NOTES:

1. LIGHT SPECIFICATIONS & LOCATIONS PER ELECTRICAL.
2. (SL) = SECURITY LIGHT TO REMAIN ON 24/7 365 DAYS, SEE ELECTRICAL.



1 LEVEL 1
SCALE: 1/4" = 1'-0"



85 granite shed lane
montpelier, vermont 05602
802.229.1664 • 802.229.4822 FAX
www.gbarchitecture.com



NSB - RICHMOND

23 PLEASANT ST.
RICHMOND, VT 05477

Revisions:
#1 01/09/2023

Project Number: 2022-0011

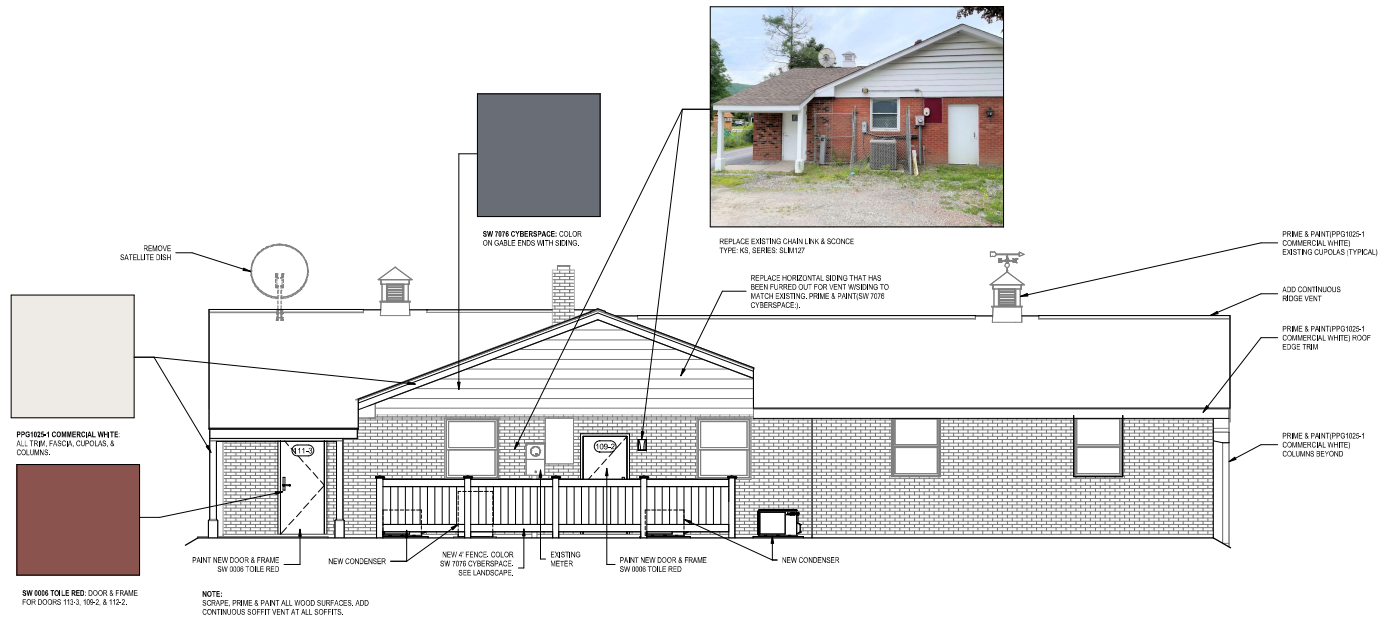
Phase: PERMIT

Scale: 1/4" = 1'-0"

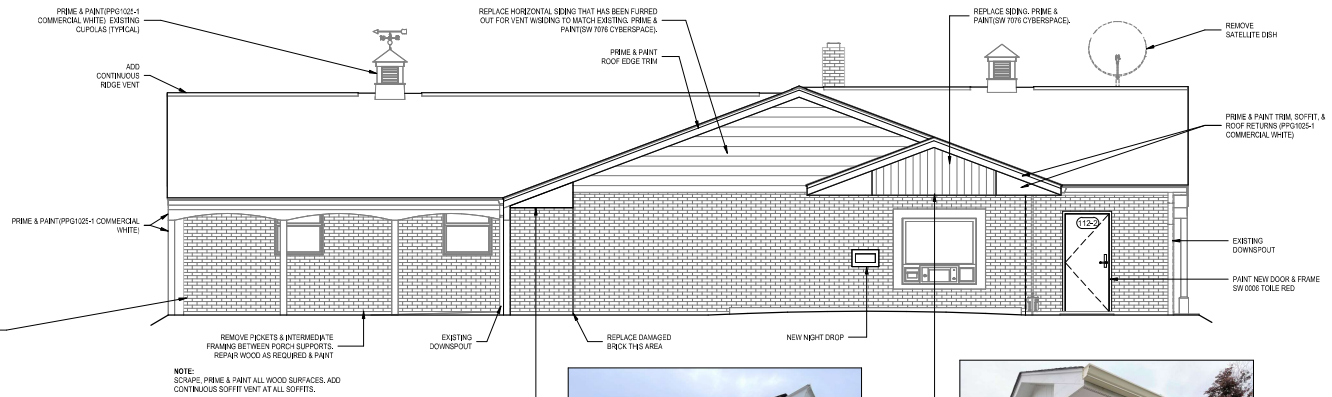
Date: 1/13/2023

EXTERIOR LIGHTS

A151



1 North
SCALE: 1/4" = 1'-0"



2 South
SCALE: 1/4" = 1'-0"



REMOVE PICKETS & INTERMEDIATE FRAMING BETWEEN PORCH SUPPORTS. REPAIR WOOD AS REQUIRED & PAINT



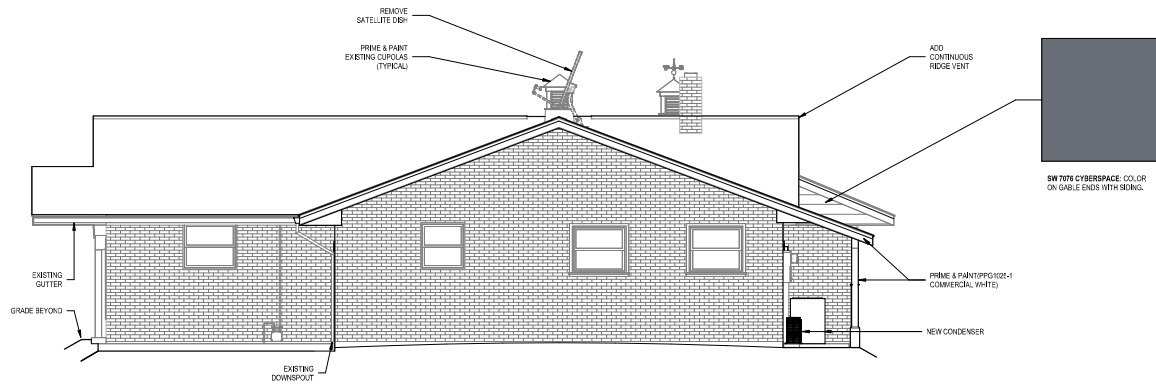
REMOVE EXISTING ROOF RETURNS ON CUSTOMER ENTRANCE PORCH. EXTEND SOFFIT AND ADD NEW ROOF RETURN FLUSH WITH WALL, SAME HEIGHT.



REMOVE EXISTING LIGHTS AT DRIVE-THRU. REPLACE WITH 3 TYPE: PR111L SERIES. LIGHT RECESSED LIGHTS. REPLACE NIGHT DEPOSITORY NEXT TO DRIVE-THRU WINDOW.

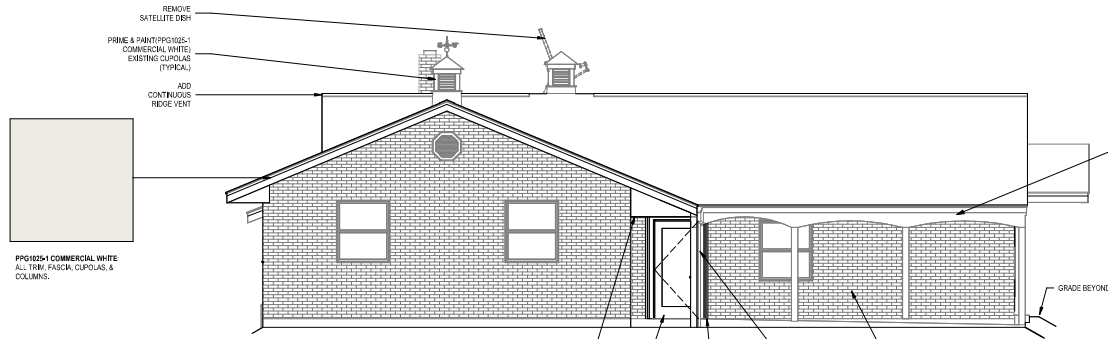


GENERAL NOTE:
 (SL) DENOTES LIGHT FIXTURES TO REMAIN 'ON'
 24/7 365 DAYS. SEE ELECTRICAL.



NOTE:
 SCRAPER, PRIME & PAINT ALL WOOD SURFACES. ADD
 CONTINUOUS SOFFIT VENT AT ALL SOFFITS.

1 East
 SCALE: 1/4" = 1'-0"



NOTE:
 SCRAPER, PRIME & PAINT ALL WOOD SURFACES. ADD
 CONTINUOUS SOFFIT VENT AT ALL SOFFITS.

2 West
 SCALE: 1/4" = 1'-0"



ALL NEW RECESSED PORCH LIGHTS @ EXISTING
 LOCATIONS. TYPE: PR(SL), SERIES: LRT8. (SL) DENOTES
 LIGHT FIXTURES TO REMAIN 'ON' 24/7 365 DAYS. SEE
 ELECTRICAL.



REMOVE PICKETS & INTERMEDIATE FRAMING BETWEEN
 PORCH SUPPORTS. REPAIR WOOD AS REQUIRED & PAINT



85 granite shed lane
 montpelier, vermont 05602
 802.229.1664 • 802.229.4822 FAX
 www.gbarchitecture.com



**NSB -
 RICHMOND**

23 PLEASANT ST.
 RICHMOND, VT 05477

Revisions:
 #1 01/09/2023

Project Number: 2022-0011

Phase: PERMIT

Scale: As indicated

Date: 1/13/2023

**BUILDING
 ELEVATIONS**

A201

© GOSSENS BACHMAN, INC.