

LEGEND

- 985--- EXISTING CONTOUR
- 985— PROPOSED CONTOUR
- — — APPROXIMATE PROPERTY LINE
- · — · APPROXIMATE SETBACK LINE
- · — · APPROXIMATE EASEMENT LINE
- SS — APPROXIMATE GRAVITY SEWER LINE
- FM — APPROXIMATE SEWER FORCE MAIN
- ST — APPROXIMATE STORM DRAINAGE LINE
- W — APPROXIMATE WATER LINE
- OETC — APPROXIMATE OVERHEAD ELEC./TEL./COM. LINE
- UETC — APPROXIMATE UNDERGROUND ELEC./TEL./COM. LINE
- G — APPROXIMATE GAS LINE
- □ — WOODEN FENCE
- — — DRAINAGE SWALE/DITCH
- — — APPROXIMATE 100 YEAR FLOODPLAIN
- — — APPROXIMATE EDGE OF WOODS
- DECIDUOUS TREE
- CONIFEROUS TREE
- SHRUB/PLANTING
- ⊙ SEWER MANHOLE
- ⊙ DRAINAGE MANHOLE
- ⊙ DRAINAGE CATCH BASIN
- ⊙ HYDRANT
- ⊙ WATER VALVE
- ⊙ DRILLED WELL
- ⊙ POWER POLE
- ⊙ GUY WIRE
- ⊙ LIGHT POLE
- ⊙ SIGN POST
- ⊙ TEST PIT
- ⊙ PERCOLATION TEST
- ⊙ IRON PIPE/ROD FOUND/SET
- ⊙ CONCRETE MONUMENT FOUND/SET
- ⊙ PROJECT BENCHMARK



EXISTING SOIL SUMMARY

TOTAL LOT SIZE: 15,697 SF (0.36 AC.)
 SITE AREA: 15,697 SF (0.36 AC.)
 SOILS —
 DdA (DUANE AND DEERFIELD SOILS, 0% TO 5%, HSG A/D): 0.36 AC.

PROJECT IMPACT SUMMARY

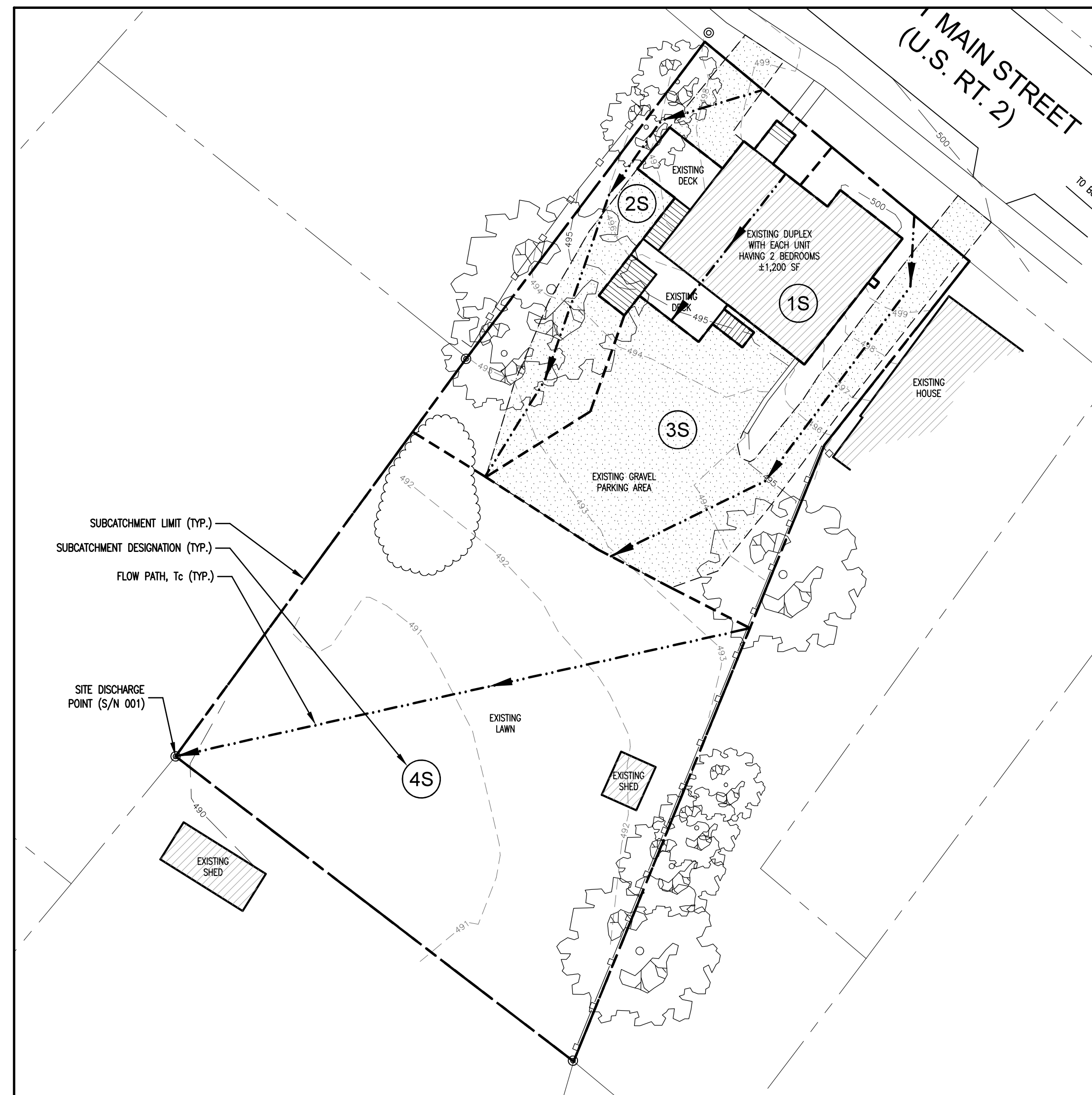
TOTAL LOT SIZE: 15,697 SF (0.36 AC.)
 SITE AREA: 15,697 SF (0.36 AC.)
 PRE-EXISTING IMPERVIOUS: 5,968 SF (0.137 AC.)
 PRE-EXISTING IMPERVIOUS TO REMAIN: 5,968 SF (0.137 AC.)
 EXISTING IMPERVIOUS TO REMAIN: 1,323 SF (0.030 AC.)
 REDEVELOPED IMPERVIOUS: 0 SF (0.000 AC.)
 NEW EXPANDED IMPERVIOUS: 1,166 SF (0.027 AC.)
 TOTAL IMPERVIOUS: 8,457 SF (0.194 AC.)

STORMWATER DESIGN SUMMARY

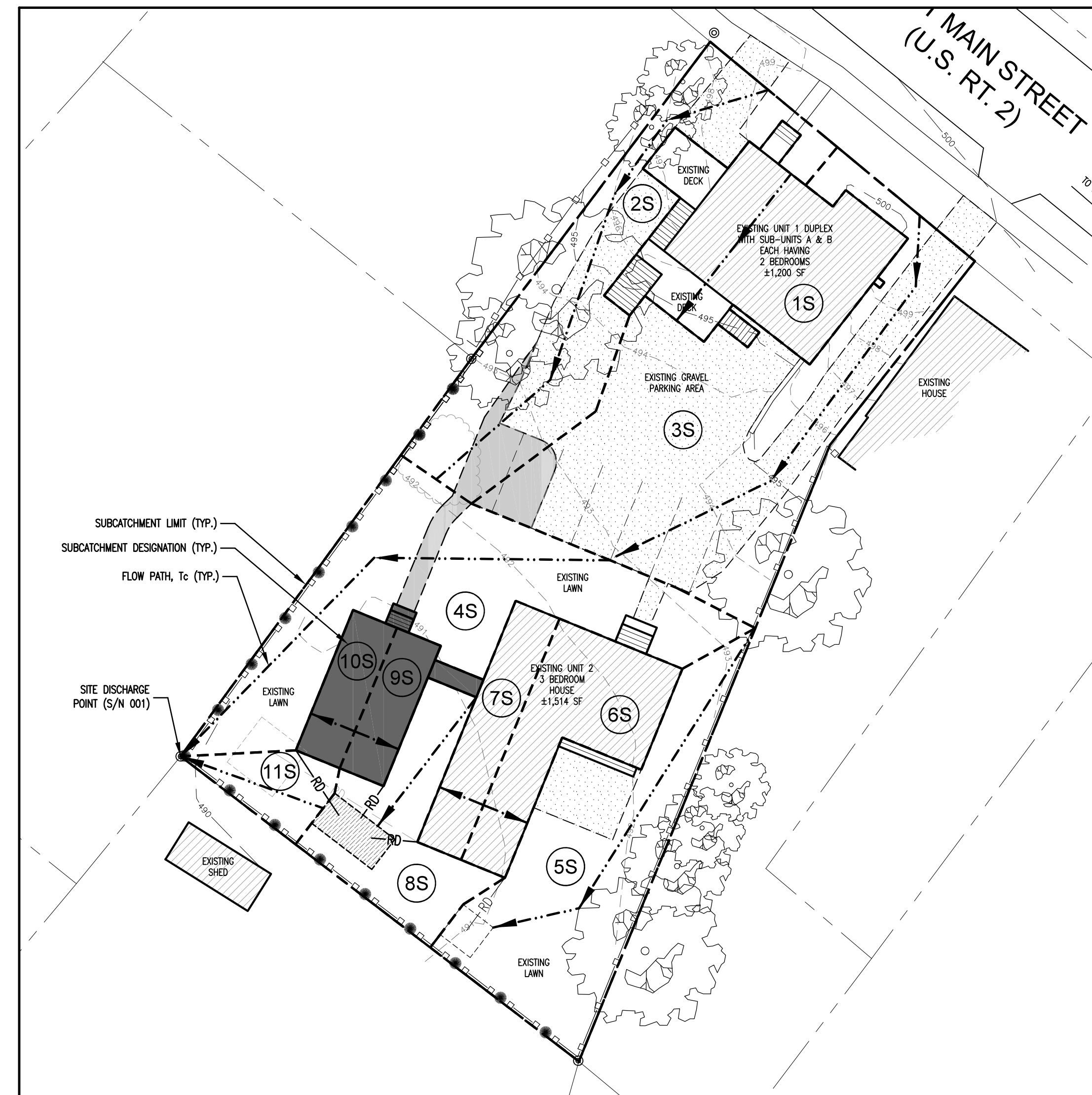
NOTE: ALL DISCHARGE RATES PROVIDE ARE AT S/N001 (SW PROPERTY CORNER)

PRE-EXISTING CONDITIONS	PROPOSED CONDITIONS
WQV: 0.17 CFS	WQV: 0.17 CFS
Q1: 0.58 CFS	Q1: 0.47 CFS
Q10: 1.34 CFS	Q10: 1.26 CFS
Q25: 1.71 CFS	Q25: 1.61 CFS
Q100: 2.30 CFS	Q100: 2.10 CFS

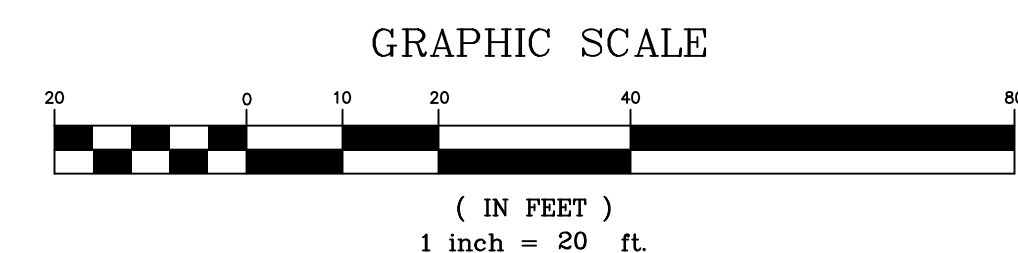
NOTE: PRE-EXISTING STORMWATER MODELING DOES NOT INCLUDE THE EXISTING 114 MAIN ST. HOUSE AND ASSOCIATED GRAVEL PARKING AREA EXPANSION. FOR THE PURPOSE OF THIS STORMWATER DESIGN COMPARISON, PRE-EXISTING CONDITIONS WERE COMPARED TO THE FINAL PROPOSED CONDITIONS.



PRE-EXISTING STORMWATER AREA SITE PLAN
 SCALE: 1" = 20'
 C1.1



PROPOSED STORMWATER AREA SITE PLAN
 SCALE: 1" = 20'
 C1.1



OWNER:
 Allen & Lynne
 Knowles Family
 Trust III, Blair
 Knowles and
 Matt Parisi
 112 E. Main St.
 Richmond, VT 05477

PROJECT:
 Master
 Development
 Plan
 112 E. Main St.
 Richmond, VT 05477

SHEET TITLE:
 Stormwater
 Management
 Site Plan



LOCATION MAP 1" = ±2,000'

- PRELIMINARY
- FINAL
- NOT FOR CONSTRUCTION
- FOR CONSTRUCTION

PROJECT NO.: 23037
 DATE: SEPTEMBER 28, 2023
 SCALE: 1" = 20'

REV. NO.	DESCRIPTION	DATE
1	UPDATED SITE PLAN	9/3/24
2	REVISIONS PER TOWN	10/2/24
3	ADDED ADU	12/29/25
4	STORMWATER REVISIONS	3/12/26
5		
6		
7		
8		
9		
10		

SHEET NUMBER:
C1.1