



G.W. Savage Corp.

16 Gregory Drive
South Burlington, VT 05403

Client: Richmond Public Library
Home: 201 Bridge St.
Richmond, VT

Operator: LRAVE

Estimator: Lee R
Position: Operations Manager

Business: (802) 355-1735
E-mail: Lravelin@gwsavage.com

Type of Estimate: Mold
Date Entered: 4/8/2022 Date Assigned: 4/7/2022
Date Est. Completed: 4/8/2022 Date Job Completed:

Price List: VTBU8X_APR22
Labor Efficiency: Restoration/Service/Remodel
Estimate: RICHMOND_LIBRARY_MLD



G.W. Savage Corp.

16 Gregory Drive
South Burlington, VT 05403

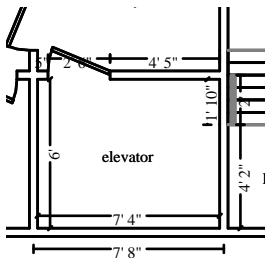
RICHMOND_LIBRARY_MLD

General Conditions

CAT	SEL	ACT DESCRIPTION	REMOVE	REPLACE	TAX	TOTAL
	CALC	QTY				
1. WTR	BARRZ+	+ Peel & seal zipper - heavy duty				
	1+1	2.00 EA	0.00+	16.83 =	1.88	35.54
Technicians will use two peel and seal zippers during remediation						
2. WTR	DUCTLF	+ Ducting - lay-flat				
	20	20.00 LF	0.00+	0.35 =	0.49	7.49
Technicians will use lay flat ducting during remediation						
3. WTR	EQ	+ Equipment setup, take down, and monitoring (hourly charge)				
	2*1+2*1	4.00 HR	0.00+	51.27 =	0.00	205.08
Two technicians (at the start of the job) for one hour, each; to moisture map, take air readings, and setup equipment. Two technicians (at the end of the job) for one hour, each; to moisture map, take air readings, and remove equipment.						
4. WTR	FHEPA<	+ Add for HEPA filter (for canister/backpack vacuums)				
	.5+.5	1.00 EA	0.00+	71.13 =	4.18	75.31
Technicians will use half the life of two upright vacuum filters during remediation						
5. WTR	FHEPA>	+ Add for HEPA filter (for neg. air machine/vacuum - Large)				
	.5	0.50 EA	0.00+	312.87 =	10.55	166.99
Technicians will use half the life of one negative air machine filter during remediation						
6. DMO	PU	- Haul debris - per pickup truck load - including dump fees				
	1	1.00 EA	199.54+	0.00 =	0.00	199.54
Technicians will remove two truckloads of debris during remediation						
7. WTR	PPE+	+ Add for personal protective equipment - Heavy duty				
	(2*2)*2	8.00 EA	0.00+	38.97 =	21.82	333.58
Technicians will use two tyvek suits per day., per technician. One suit is worn before lunch, and one is worn after.						
8. WTR	PPERCP	+ PAPR cartridge - HEPA only (single cartridge)				
	1	1.00 EA	0.00+	28.36 =	1.99	30.35
Technicians will use the life of one respirator filter per technician, per job						

Totals: General Conditions **40.91** **1,053.88**

Main Level



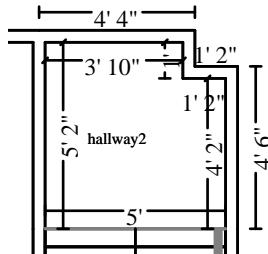
elevator	Height: 8'
213.33 SF Walls	44.00 SF Ceiling
257.33 SF Walls & Ceiling	44.00 SF Floor
4.89 SY Flooring	26.67 LF Floor Perimeter
26.67 LF Ceil. Perimeter	



G.W. Savage Corp.

16 Gregory Drive
South Burlington, VT 05403

CAT	SEL	ACT DESCRIPTION	REMOVE	REPLACE	TAX	TOTAL
	CALC	QTY				
9. WTR	GRMB	+ Apply plant-based anti-microbial agent to more than the floor				
	F+PF	70.67 SF	0.00+	0.26 =	0.25	18.62
Technicians will apply antimicrobial to all affected areas , after cleaning and wiping is complete						
10. WTR	HEPAVAS	+ HEPA Vacuuming - Detailed - (PER SF)				
	(F+W+C)*2	602.67 SF	0.00+	0.63 =	0.00	379.68
Technicians will HEPA vacuum more than the floors, walls, and ceilings, twice						
11. CLN	AV+	+ Clean more than the floor - Heavy				
	F+W+C	301.33 SF	0.00+	0.43 =	0.21	129.78
Technicians will wipe more than the floors, walls, and ceilings						
12. WTR	DRYW4S	- Tear out wet drywall, cleanup, bag, per LF - to 4' - Cat 3				
	.25F	11.00 LF	6.97+	0.00 =	0.51	77.18
Technicians will remove affected CAT3 drywall during remediation						
Totals: elevator					0.97	605.26



hallway2

Height: 8'

122.67 SF Walls	24.65 SF Ceiling
147.32 SF Walls & Ceiling	24.65 SF Floor
2.74 SY Flooring	15.33 LF Floor Perimeter
15.33 LF Ceil. Perimeter	

Missing Wall

5' X 8'

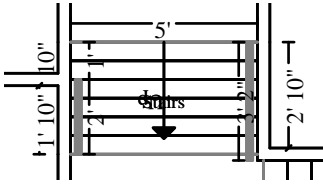
Opens into STAIRS4

CAT	SEL	ACT DESCRIPTION	REMOVE	REPLACE	TAX	TOTAL
	CALC	QTY				
13. WTR	DRYW4S	- Tear out wet drywall, cleanup, bag, per LF - to 4' - Cat 3				
	PF	15.33 LF	6.97+	0.00 =	0.71	107.56
Technicians will remove affected CAT3 drywall during remediation						
14. WTR	GRMB	+ Apply plant-based anti-microbial agent to more than the floor				
	F+PF	39.98 SF	0.00+	0.26 =	0.14	10.53
Technicians will apply antimicrobial to all affected areas , after cleaning and wiping is complete						
15. WTR	HEPAVAS	+ HEPA Vacuuming - Detailed - (PER SF)				
	(F+W+C)*2	343.93 SF	0.00+	0.63 =	0.00	216.68
Technicians will HEPA vacuum more than the floors, walls, and ceilings, twice						
16. CLN	AV+	+ Clean more than the floor - Heavy				
	F+W+C	171.97 SF	0.00+	0.43 =	0.12	74.07
Technicians will wipe more than the floors, walls, and ceilings						
17. WTR	TRIM	- Tear out trim and bag for disposal - up to Cat 3				
	PF	15.33 LF	0.90+	0.00 =	0.19	13.99
Technicians will remove wooden trim, during remediation						
18. WTR	NAFAN>	+ Neg. air fan/Air scrub.-Large (per 24 hr period)-No monit.				
	1+1+1	3.00 DA	0.00+	105.00 =	0.00	315.00



G.W. Savage Corp.

16 Gregory Drive
South Burlington, VT 05403



Stairs

Height: 17'

76.55 SF Walls	15.00 SF Ceiling
91.55 SF Walls & Ceiling	61.25 SF Floor
6.81 SY Flooring	17.01 LF Floor Perimeter
6.17 LF Ceil. Perimeter	

Missing Wall

5' X 17'

Opens into LANDING3

Missing Wall

5' X 17'

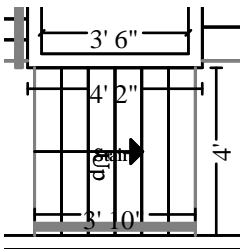
Opens into HALLWAY2

CAT	SEL	ACT DESCRIPTION	REMOVE	REPLACE	TAX	TOTAL
	CALC	QTY				
24. WTR	DRYW4S	- Tear out wet drywall, cleanup, bag, per LF - to 4' - Cat 3				
	PF	17.01 LF	6.97+	0.00 =	0.79	119.35
Technicians will remove affected CAT3 drywall during remediation						
25. WTR	GRMB	+ Apply plant-based anti-microbial agent to more than the floor				
	F+PF	78.26 SF	0.00+	0.26 =	0.27	20.62
Technicians will apply antimicrobial to all affected areas , after cleaning and wiping is complete						
26. WTR	HEPAVAS	+ HEPA Vacuuming - Detailed - (PER SF)				
	(F+W+C)	152.80 SF	0.00+	0.63 =	0.00	96.26
Technicians will HEPA vacuum more than the floors, walls, and ceilings, twice						
27. CLN	AV+	+ Clean more than the floor - Heavy				
	F+W+C	152.80 SF	0.00+	0.43 =	0.11	65.81
Technicians will wipe more than the floors, walls, and ceilings						

Totals: Stairs

1.17

302.04



Stairs

Height: 17'

100.21 SF Walls	15.33 SF Ceiling
115.55 SF Walls & Ceiling	52.33 SF Floor
5.81 SY Flooring	17.60 LF Floor Perimeter
8.00 LF Ceil. Perimeter	

Missing Wall

4' X 17'

Opens into LANDING3

Missing Wall

4' X 17'

Opens into LANDING2

CAT	SEL	ACT DESCRIPTION	REMOVE	REPLACE	TAX	TOTAL
	CALC	QTY				
28. WTR	HEPAVAS	+ HEPA Vacuuming - Detailed - (PER SF)				
	(F+W+C)	167.88 SF	0.00+	0.63 =	0.00	105.76
Technicians will HEPA vacuum more than the floors, walls, and ceilings, twice						



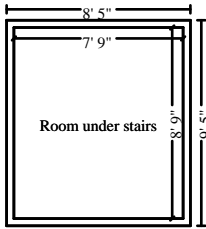
G.W. Savage Corp.

16 Gregory Drive
South Burlington, VT 05403

CONTINUED - Stairs

CAT	SEL CALC	ACT DESCRIPTION QTY	REMOVE	REPLACE	TAX	TOTAL
29. CLN	AV+ F+W+C	+ Clean more than the floor - Heavy 167.88 SF	0.00+	0.43 =	0.12	72.31
Technicians will wipe more than the floors, walls, and ceilings						
Totals: Stairs					0.12	178.07
Total: Main Level					4.12	2,036.70

Level 2



Room under stairs

Height: 8'

264.00 SF Walls	67.81 SF Ceiling
331.81 SF Walls & Ceiling	67.81 SF Floor
7.53 SY Flooring	33.00 LF Floor Perimeter
33.00 LF Ceil. Perimeter	

CAT	SEL CALC	ACT DESCRIPTION QTY	REMOVE	REPLACE	TAX	TOTAL
30. WTR	GRMB F+PF	+ Apply plant-based anti-microbial agent to more than the floor 100.81 SF	0.00+	0.26 =	0.35	26.56
Technicians will apply antimicrobial to all affected areas , after cleaning and wiping is complete						
31. WTR	HEPAVAS (F+W+C)*2	+ HEPA Vacuuming - Detailed - (PER SF) 799.25 SF	0.00+	0.63 =	0.00	503.53
Technicians will HEPA vacuum more than the floors, walls, and ceilings, twice						
32. WTR	INSCS .5W	- Tear out and bag wet insulation in confined space - Cat 3 132.00 SF	2.13+	0.00 =	0.55	281.71
Technicians will remove affected CAT3 insulation during remediation						
33. WTR	PADS 4*6	- Tear out wet carpet pad, cut/bag - Category 3 water 24.00 SF	0.75+	0.00 =	0.10	18.10
Technicians will remove carpet and padding from stairs						
34. WTR	BARR 10*10	+ Containment Barrier/Airlock/Decon. Chamber 100.00 SF	0.00+	0.85 =	1.12	86.12
Technicians will use plastic for containment during remediation						
35. CLN	AV+ F+W+C	+ Clean more than the floor - Heavy 399.63 SF	0.00+	0.43 =	0.28	172.12
Technicians will wipe more than the floors, walls, and ceilings						



G.W. Savage Corp.

16 Gregory Drive
 South Burlington, VT 05403

CONTINUED - Room under stairs

CAT	SEL CALC	ACT DESCRIPTION QTY	REMOVE	REPLACE	TAX	TOTAL
Totals: Room under stairs					2.40	1,088.14
Total: Level 2					2.40	1,088.14
Line Item Totals: RICHMOND_LIBRARY_MLD					47.43	4,178.72

Grand Total Areas:

2,219.74	SF Walls	505.32	SF Ceiling	2,725.06	SF Walls and Ceiling
626.91	SF Floor	69.66	SY Flooring	291.73	LF Floor Perimeter
0.00	SF Long Wall	0.00	SF Short Wall	263.50	LF Ceil. Perimeter
626.91	Floor Area	581.02	Total Area	1,866.67	Interior Wall Area
1,483.00	Exterior Wall Area	168.33	Exterior Perimeter of Walls		
0.00	Surface Area	0.00	Number of Squares	0.00	Total Perimeter Length
0.00	Total Ridge Length	0.00	Total Hip Length		



G.W. Savage Corp.

16 Gregory Drive
South Burlington, VT 05403

Summary

Line Item Total	4,131.29
Material Sales Tax	47.43
Replacement Cost Value	\$4,178.72
Net Claim	\$4,178.72

Lee R
Operations Manager

