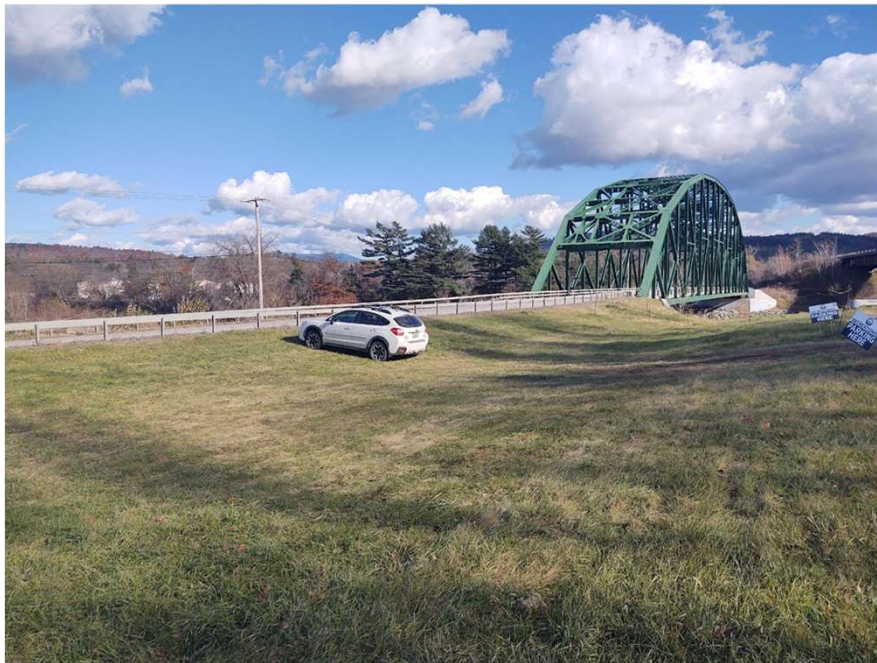


Parking Advisory Committee (PAC) Update – Fall 2021



Johnnie Brook / Checkered House Bridge Parking Area



Charter



- The Parking Advisory Committee was formed in December 2020 by the Selectboard. The Committee will analyze areas of Richmond that are attracting large numbers of parked cars, specifically in the summer months when people are visiting the many recreational locations in town. The Committee will engage with stakeholders, residents, and Town staff to develop solutions for crowded parking areas with a focus on safety of residents, pedestrians, and vehicle operators. These suggested solutions will be presented to the Selectboard for consideration of approval and implementation.
- ***January 2021...narrowed focus to Winooski River Corridor and lower Huntington River, with Jonesville focus***

Background

- First (and only) presentation to Selectboard on April 5th. You can find it 26 minutes in: <https://archive.org/details/richmond-selectbd-04052021>
- Map recreational parking in Richmond can be found on town website: <http://www.richmondvt.gov/parking/>
- Created signs pointing to the map QR code at every parking area



Recreational Parking for R...

This map shows the current places available for recreational parking in Richmond, VT
1,508 views

SHARE EDIT

Recreational Parking

- Overocker Park
- Beeken Preserve
- Bombardier Meadow
- RR Right of Way
- Huntington Gorge
- Robbins Mtn WMA
- Cochran's Ski Area
- Andrews Forest Preserve
- Johnnie Brook
- Volunteers Green
- Willis Hill Preserve
- Edmonds Bridge Parking

Trails

- All items

Map data ©2021 Terms 1,000 ft

Google My Maps

Keyboard shortcuts



Live map link on <http://richmondvt.gov/parking>

Made with Google My Maps



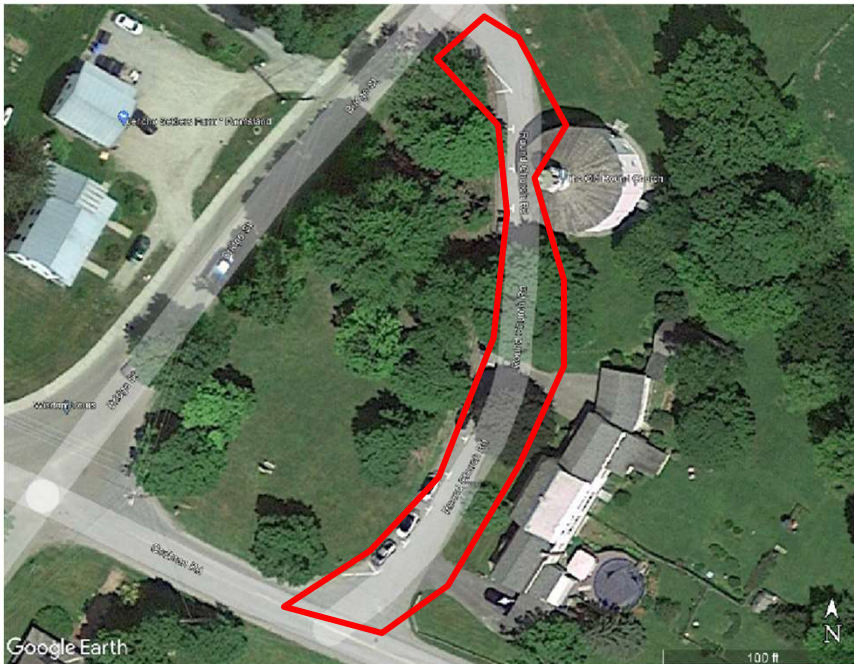
Checkered House Bridge (green bridge)



- **Purpose:** serve recreation on west side
- **Season:** spring/summer/fall
- **Capacity:** 14
- **Status:** Opened 9/21
- **Comments:** Needs annual Vtrans 1111 permit (\$250 / year)



Round Church Parking



- **Purpose:** Encourage cyclists to use recreational parking
- **Season:** All season
- **Capacity:** 2 visitor spots, 2 handicap spots, and the rest 2 hour parking
- **Status:** Updated 5/21
- **Comments:** Created “please park elsewhere” parking cards for Historical Society’s use



Overocker Park



- **Purpose:** Ease seasonal parking needs on Cochran Rd, reduce load on town parking
- **Season:** Perhaps all season
- **Capacity:** +30 spots
- **Status:** Opened 6/21
- **Comments:** Currently undergoing wetland assessment with help from Conservation Committee



RLT Beeken Preserve

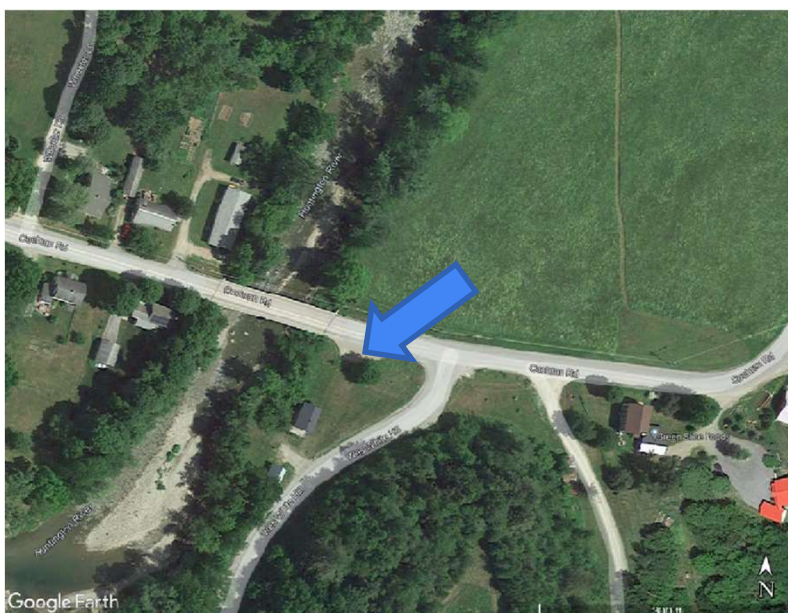
Include???



- **Purpose:** Ease seasonal parking needs on Cochran Rd
- **Season:** Perhaps all season
- **Capacity:** +20 spots
- **Status:** Opened 7/21
- **Comments:** Richmond Land Trust will shift all parking to new lot once site reviews complete



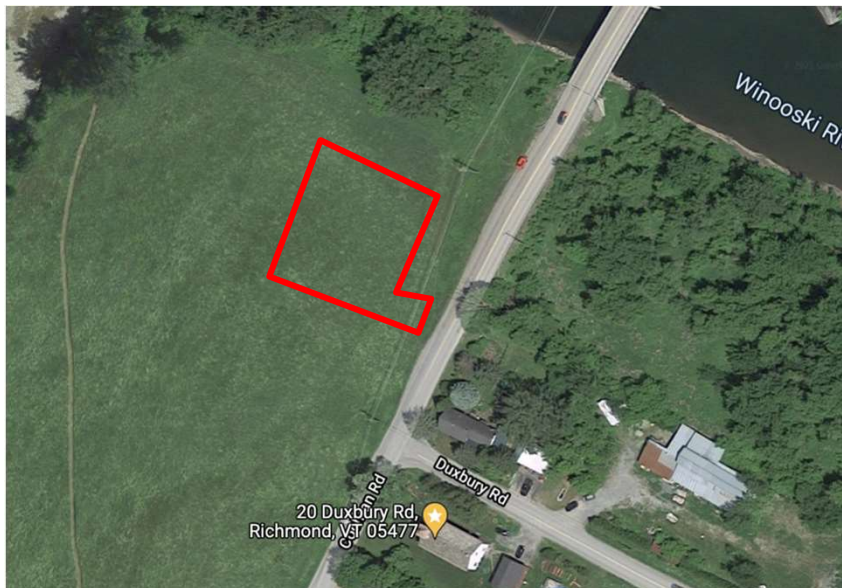
Edmund Bridge Parking (Wes White Hill)



- **Purpose:** Reduce strain on Wes White / Cochran Intersection
- **Season:** All season
- **Capacity:** 5 spots
- **Status:** Unchanged
- **Comments:** Needs lines painted and replacement of plaque



Bombardier Meadow



- **Purpose:** Eliminate parking alongside Cochran road
- **Season:** Seasonal
- **Capacity:** +20 spots
- **Status:** Continue 2022
- **Comments:** Continue Bombardier on a status quo seasonal basis for 2022. Future use would be determined on a year-to-year basis. “see how things sugar out”.



Jonesville Railroad ROW Parking



- **Purpose:** Eliminate parking alongside Cochran road and Route 2
- **Season:** All year
- **Capacity:** +12 spots
- **Status:** Pending
- **Comments:** Waiting for response from Canadian National on proposed Lease Agreement



Jonesville Route 2 Bullpen



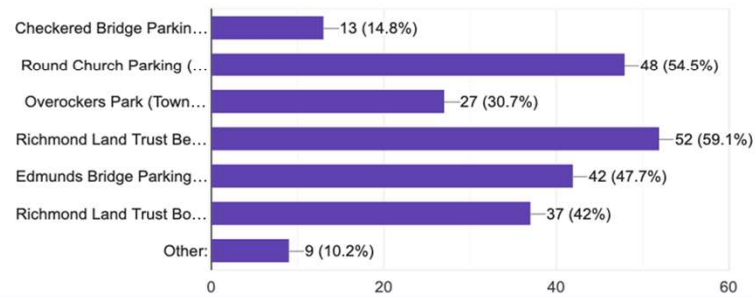
- **Purpose:** Cochran road and Route 2
- **Season:** All year
- **Capacity:** +20 spots
- **Status:** Pending
- **Comments:** Many requirements still pending, Delayed to 2022

Public reaction – Front Porch Forum “Survey” Oct. 21



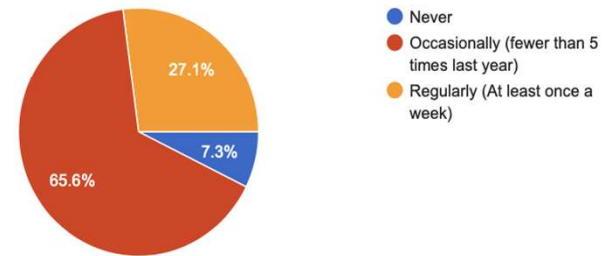
In the last year have you used any of the Richmond Recreational parking sites (check all that apply) note; You can check out each location at <http://www.richmondvt.gov/parking/>

88 responses



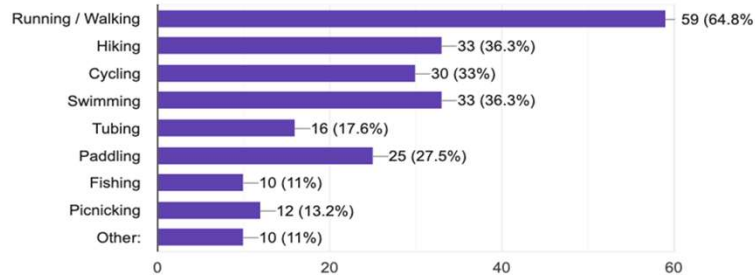
How many times did you use Richmond Recreational Parking in the last year ? *

96 responses



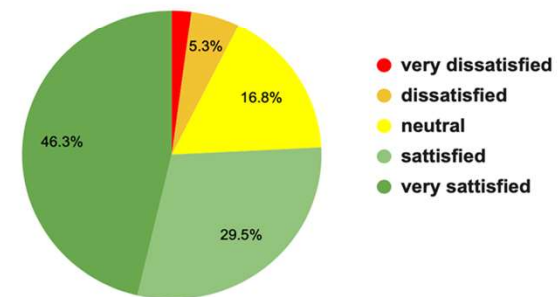
For what activities do you use Richmond Recreational parking (check all that apply)

91 responses



How satisfied are you with recreational parking in Richmond? *

95 responses



Next steps



Ongoing activities:

- Continue to work with RLT on Bombardier Meadow parking.....(Town Staff)
- Complete RR ROW lease(Town Staff)
- Decide on plan for “Bullpen” parking on Route 2(Future Decision)
- Monitor Usage of all areas (amount of use vs. level of effort).....(Town Staff and PAC)
- Wetlands Delineation of Overocker Park(Town Staff)
- VTrans annual 1111 permit for Johnnie Brook Road parking.....(Town Staff)

Future of PAC:

- Wind down PAC and integrate mission into existing town planning efforts (e.g. Planning, Recreation, and/or Trails committees)
- Continue PAC with expanded geographic focus (eg. Dugway) with appropriate new members.

Questions?

