

To Whom it may concern,

The proposed outdoor dining enclosure is identical to what is currently built. We will be removing the existing structure and rebuilding it so that it sits on the correct property line. It is made entirely of locally milled unpainted hemlock. The uprights posts are 5 x 5", the horizontal slats are 1 x 10" with 1" spacing between boards and the crossmembers that connect the structure to the building are 2 x 8". The horizontal members start at a height of 3' at the west end (Bridge St. side) and will rise one course at a time over the first 24" until they reach a height of 8' 4". This height continues to the back corner of the dining area and then across a span of 22' until the enclosure connects with the building.

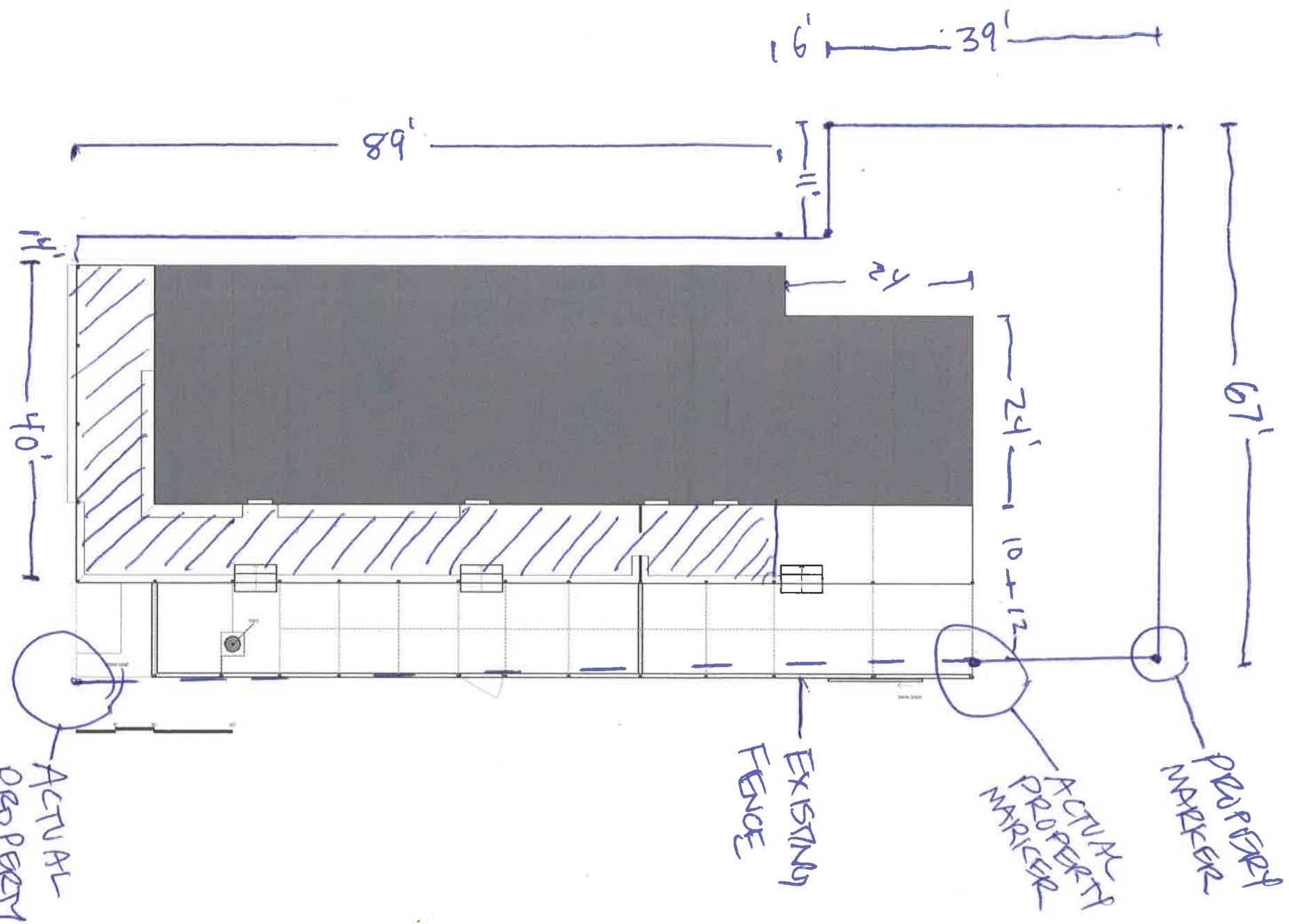
9/23 Stan

GABRIEL FIDMAN
39 BRIDGE ST.

LOT SF = 7933

COVERAGE = 520%

BUILDING = 4136
&
PORCH



9/23 am
GARAGE REMAINS
TO BE BUILT ST

ACTUAL
PROPERTY
MARKER

EXISTING
FENCE

ACTUAL
PROPERTY
MARKER

PROPERTY
MARKER