

Andrews Community Fort Trails
An Assessment
Bob Low

Figure-1

Original Management Plan Site Maps

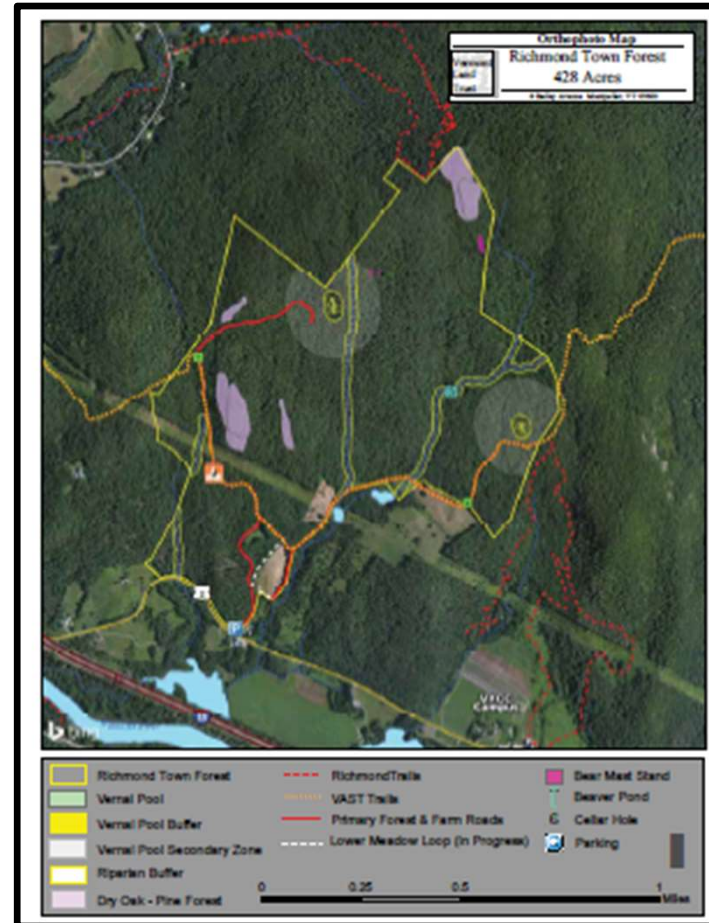
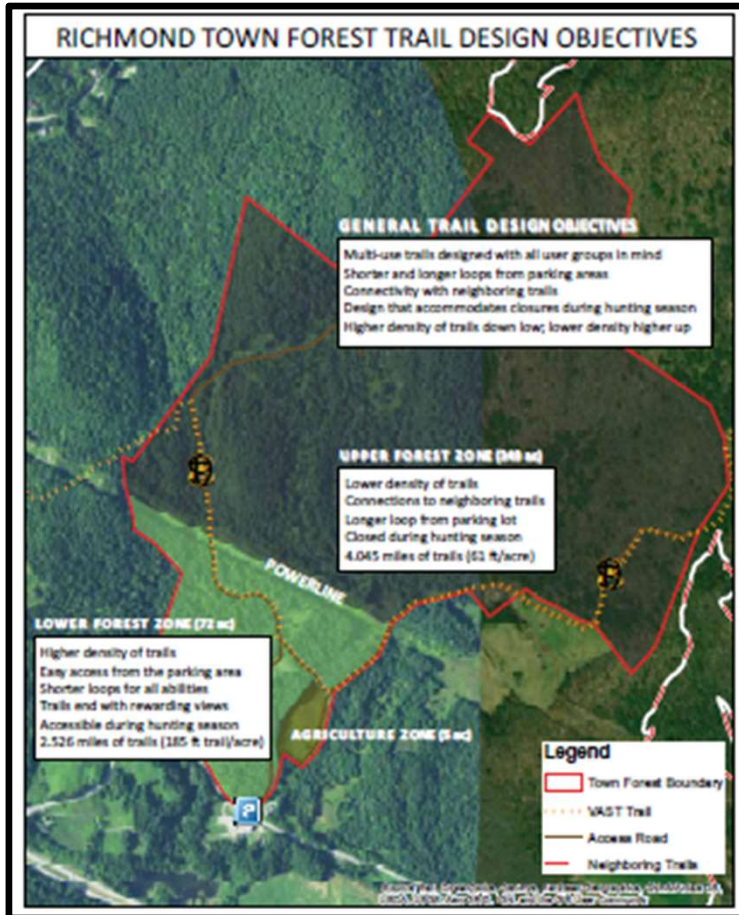
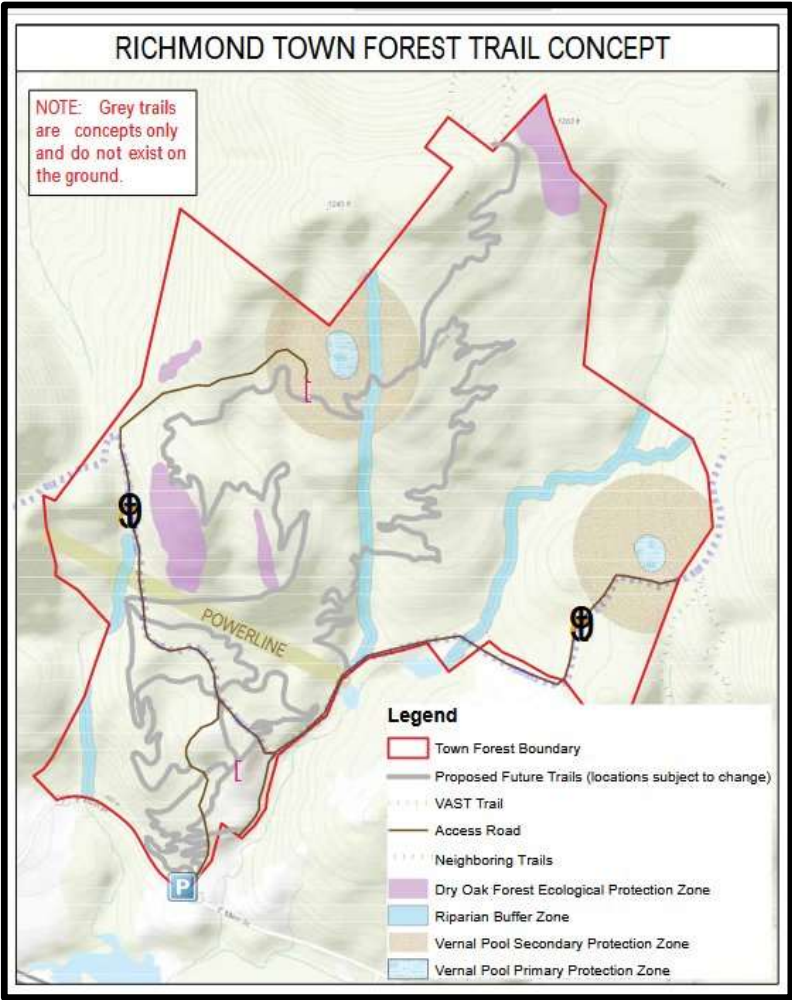


Figure-2

**Original Management Plan
Concept Map**



Management Plan March 2023

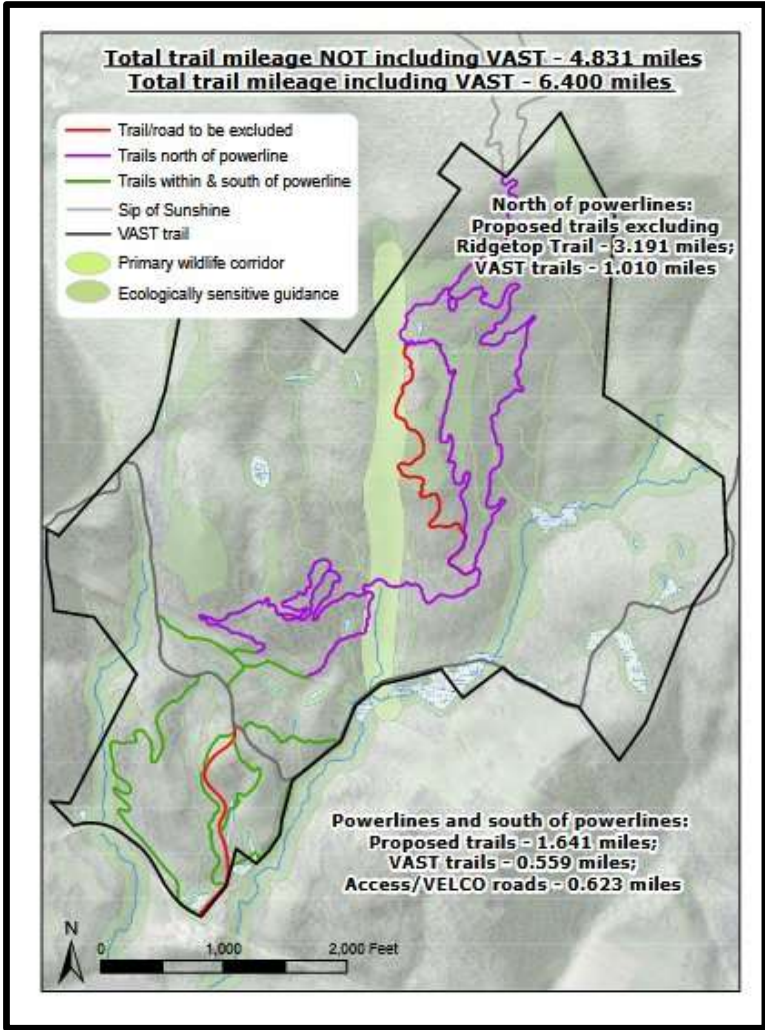
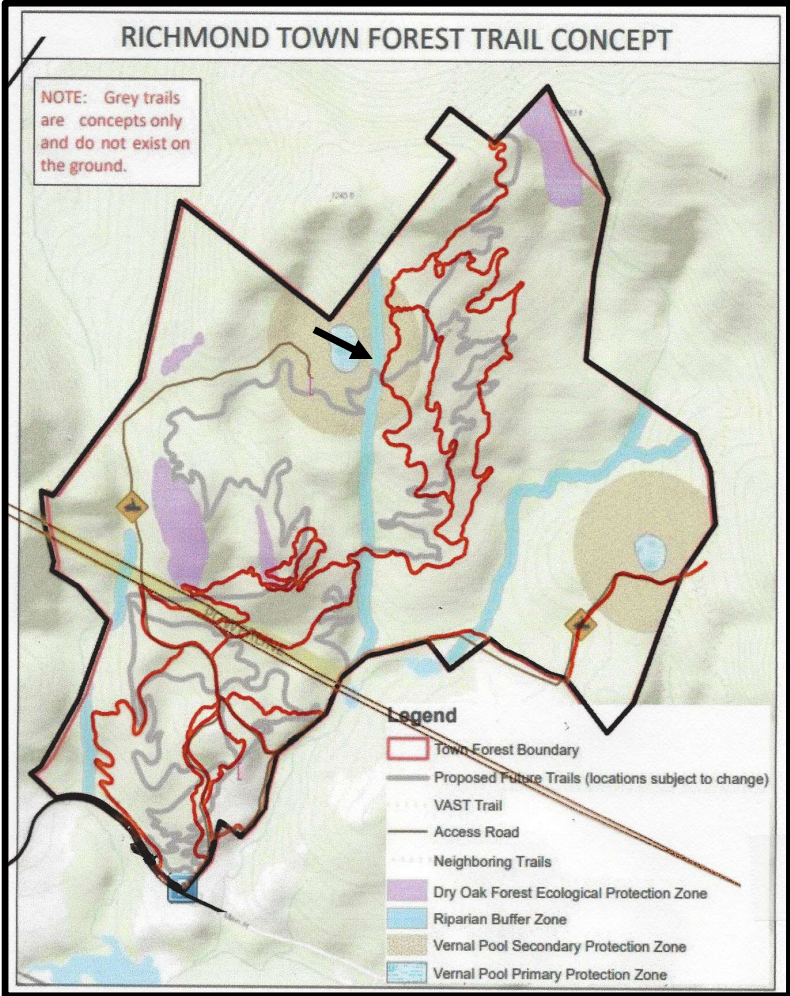


Figure-3

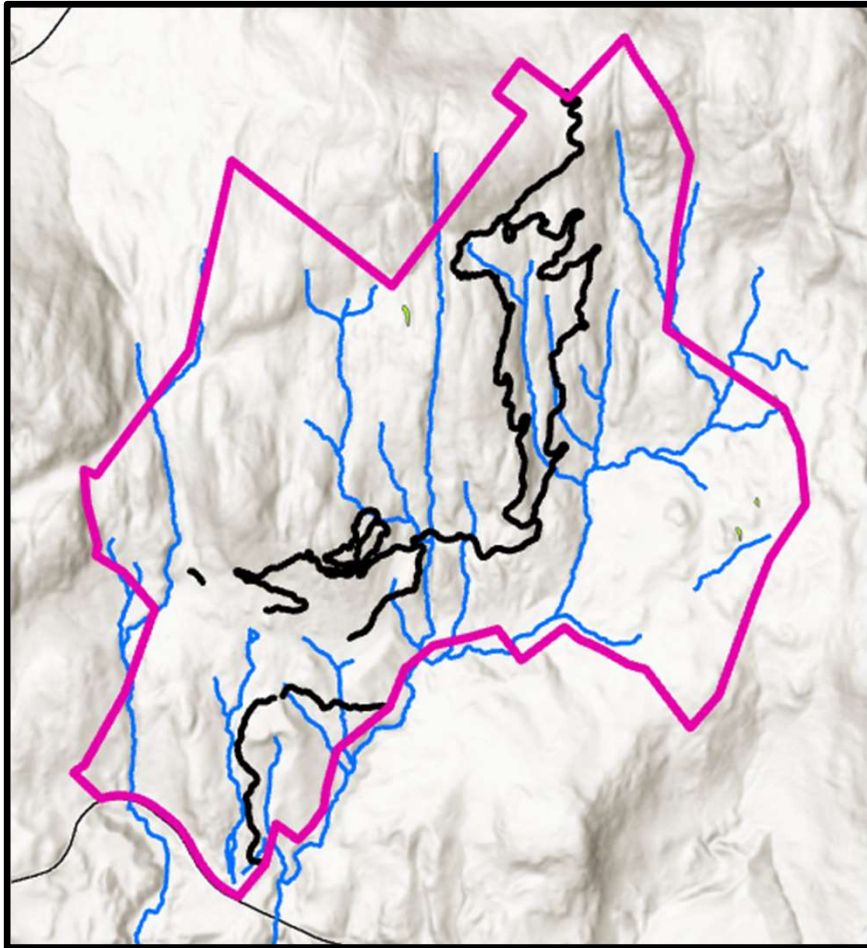
Management Plan Maps Superimposed*



***The trail marked with arrow is to be deleted**

Figure-4

Proposed



All Trails: Ridge Top removed

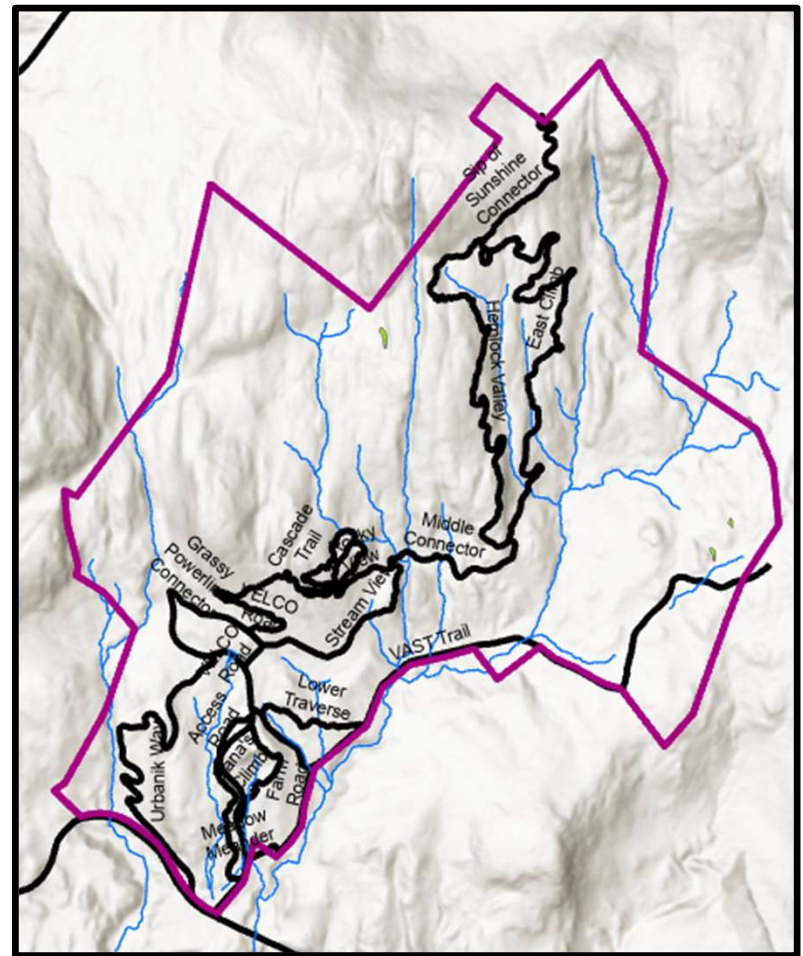
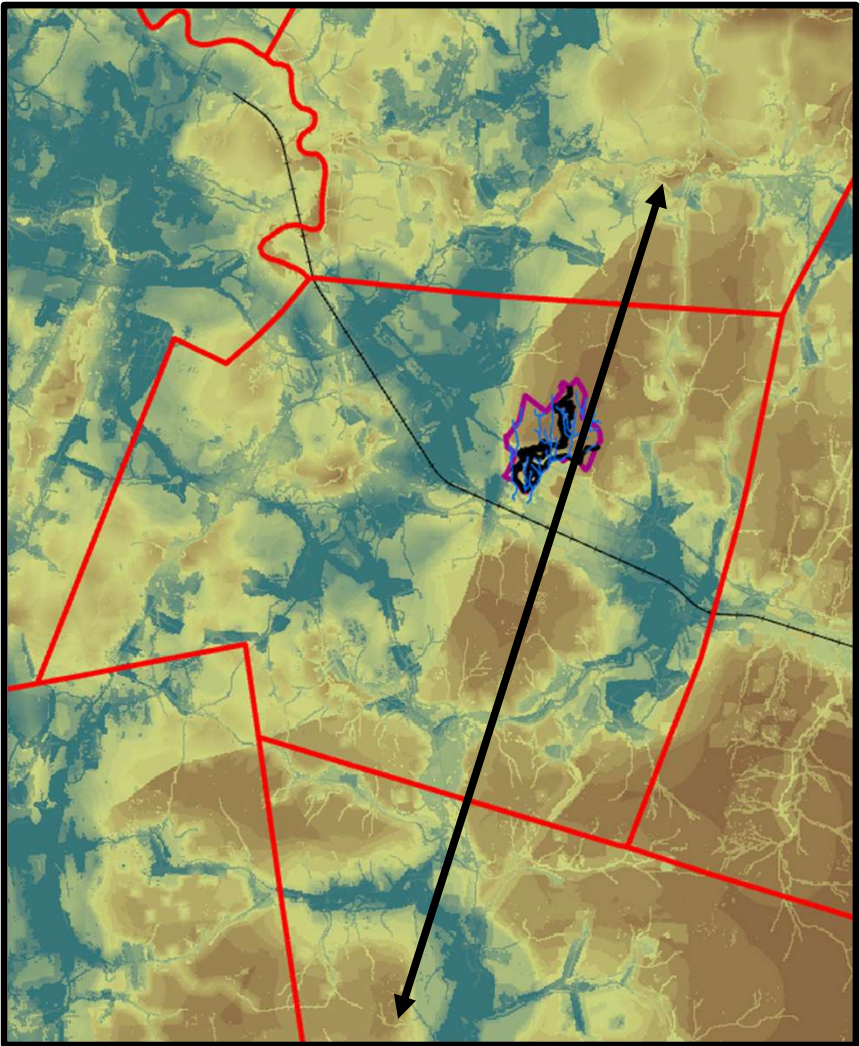
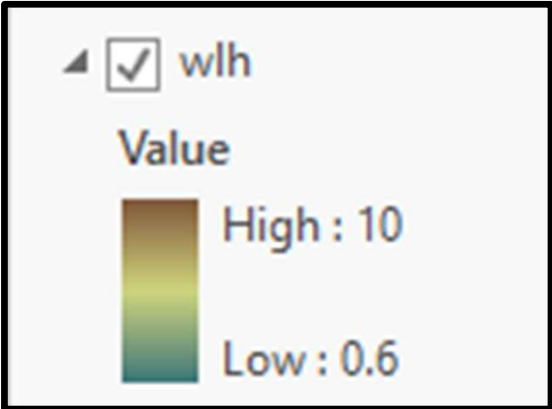


Figure-5



WLH: Wild Life Habitat

Figure-6

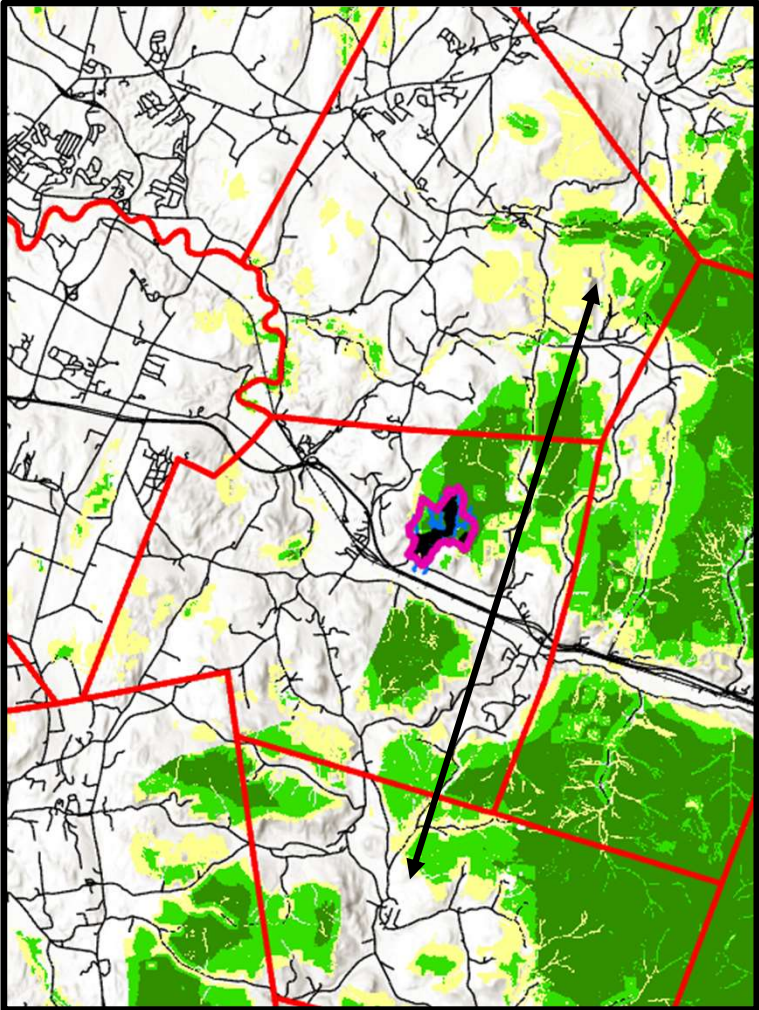
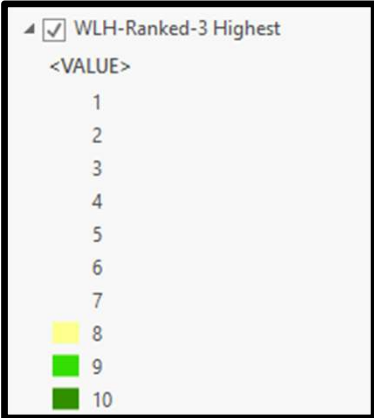


Figure-7

ANR

3% Highest Priority Interior Forest Blocks

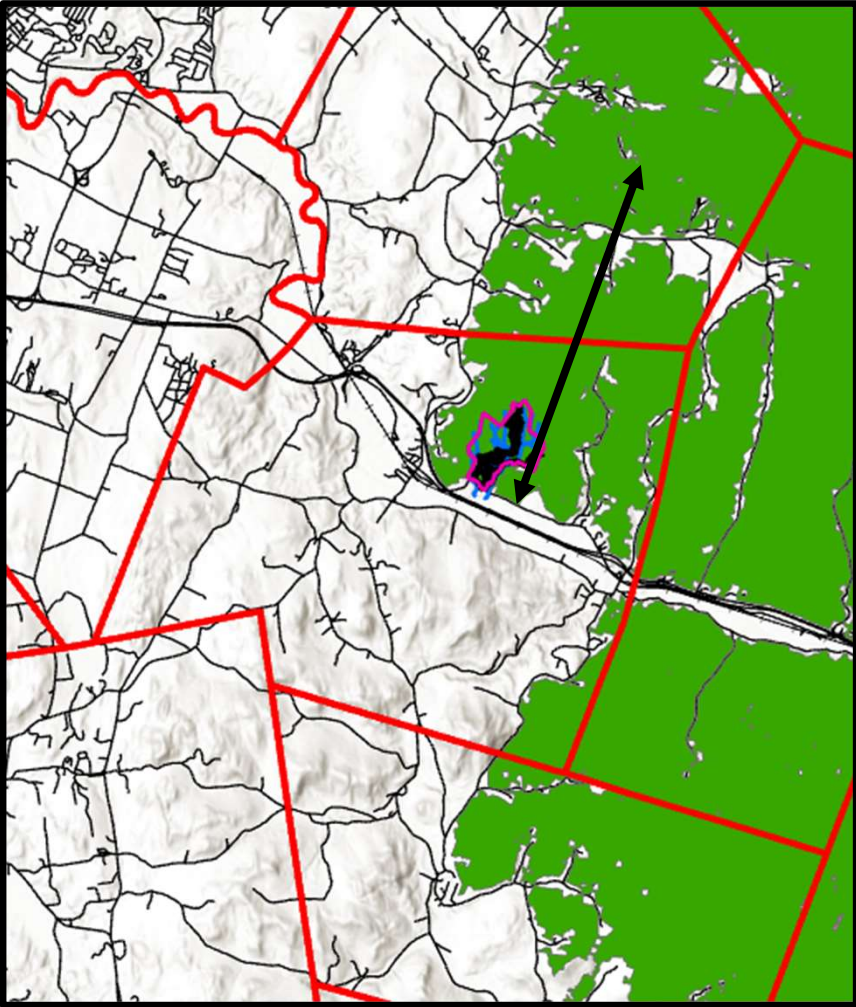




Figure-8

ANR

Connectivity Blocks

	Highest Priority Connectivity Blocks
	Priority Connectivity Blocks

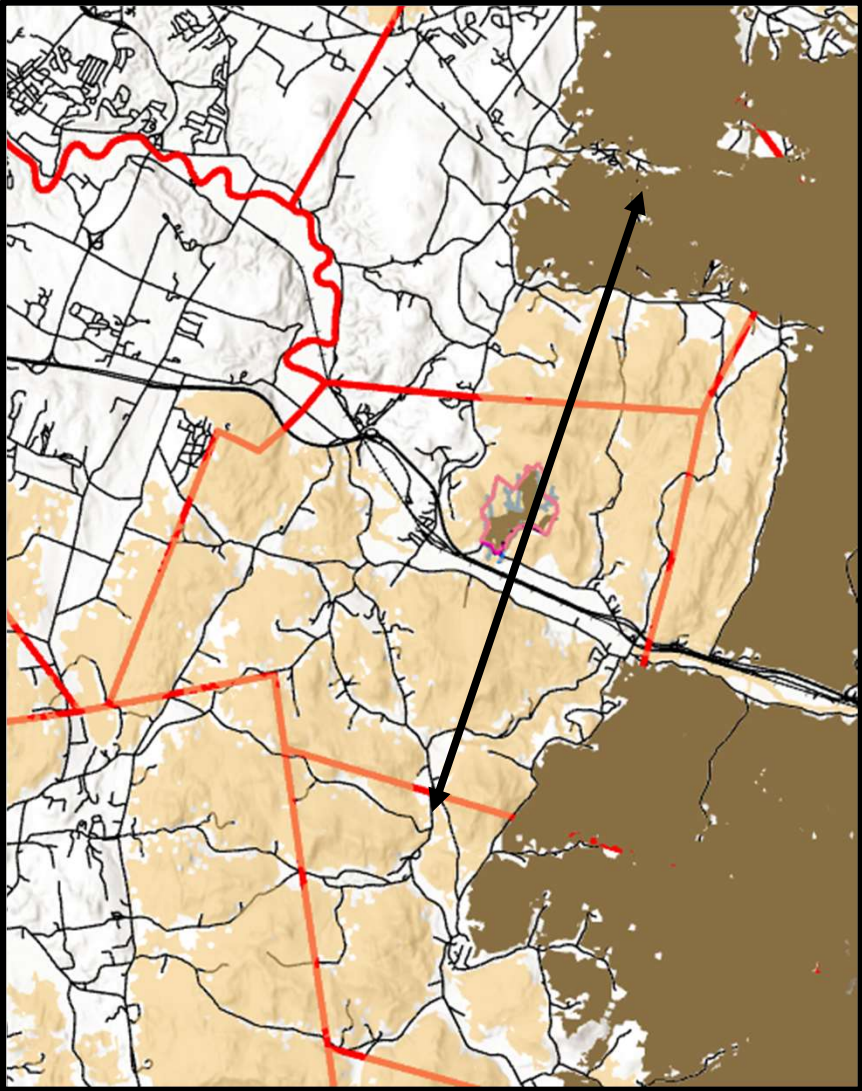


Figure-9

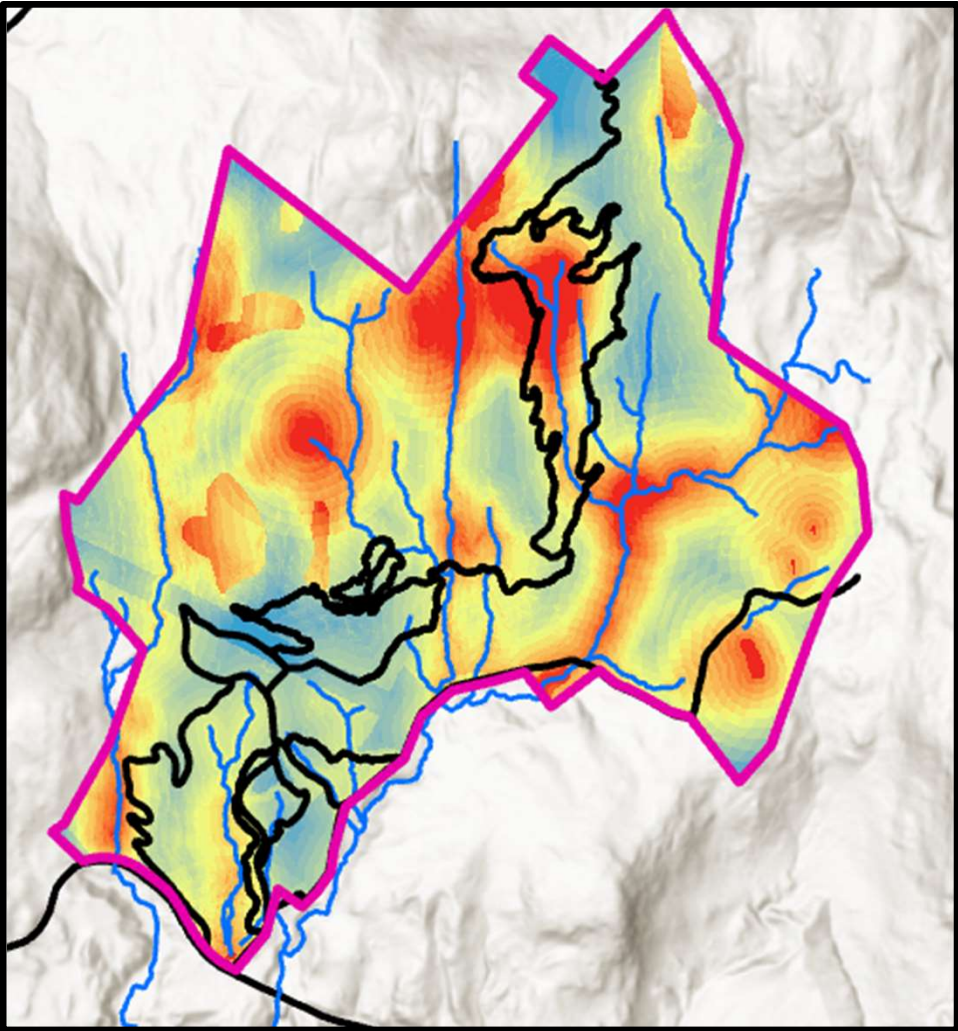
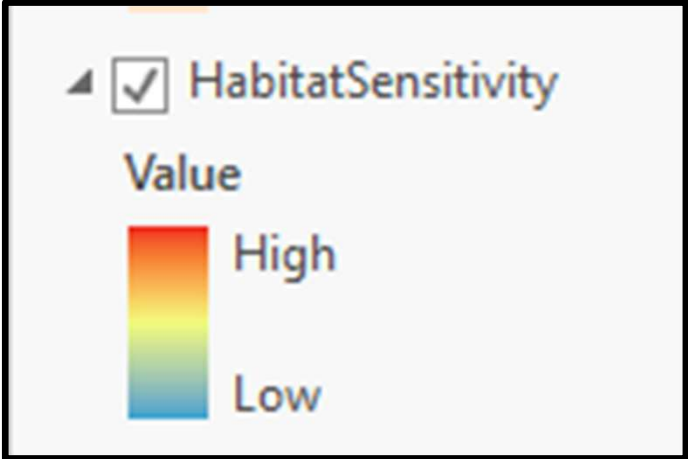


Figure-10

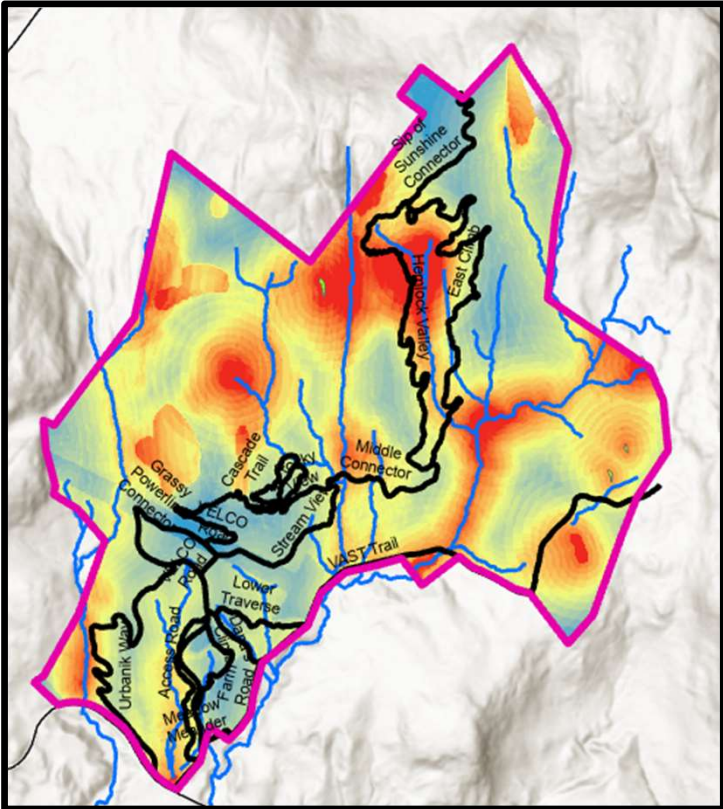
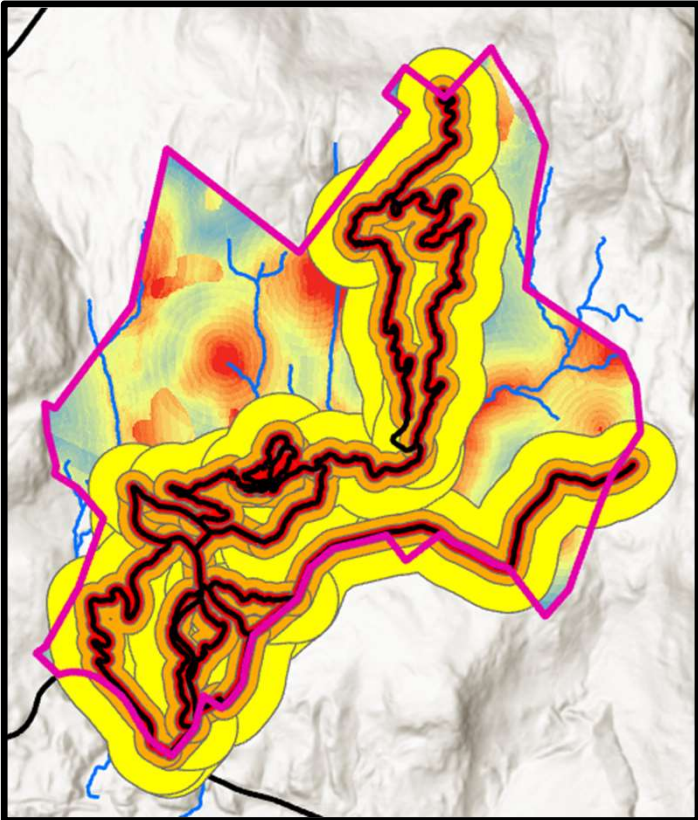
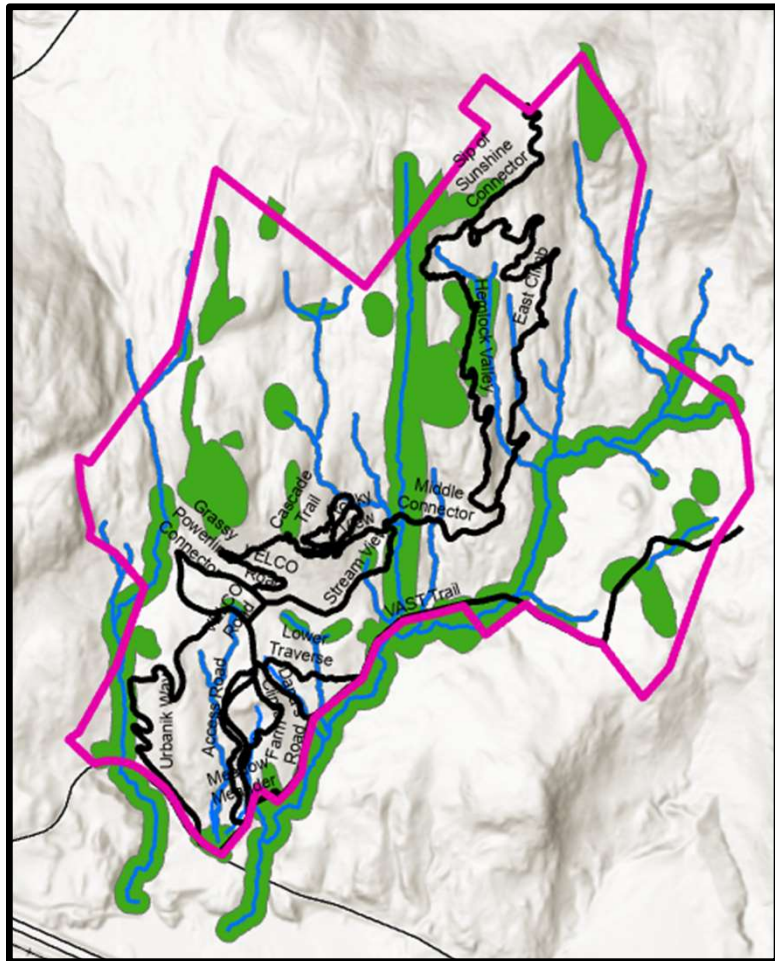


Figure-11

Ecologically Sensitive



ZO: Zone Of Influence

200-foot Buffer

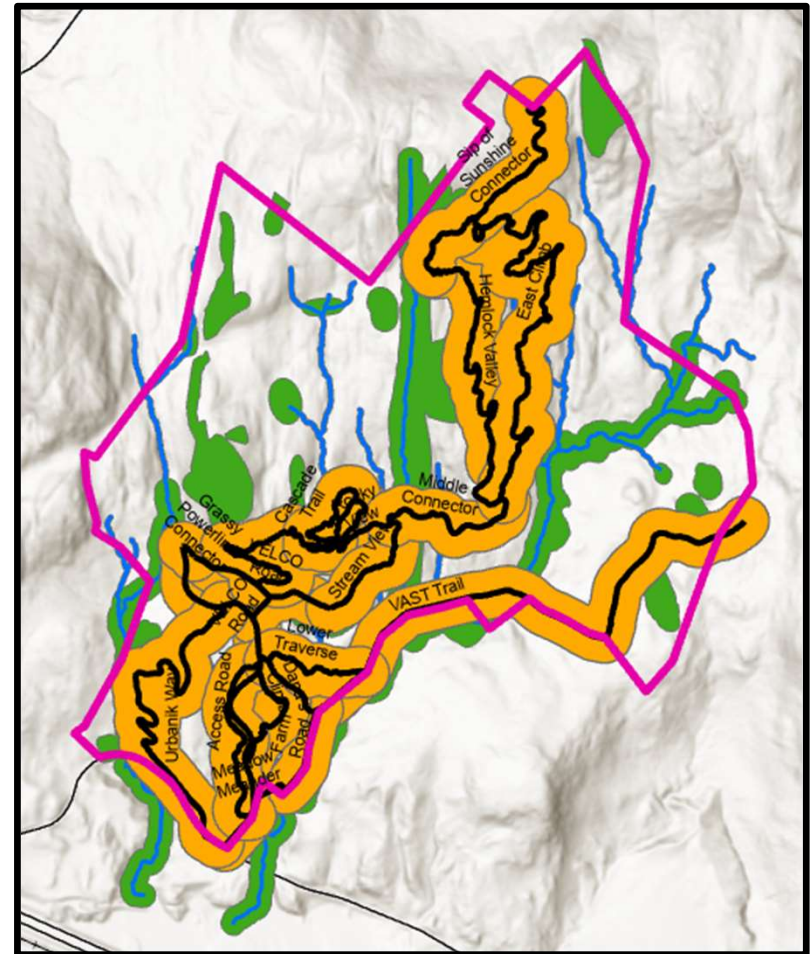
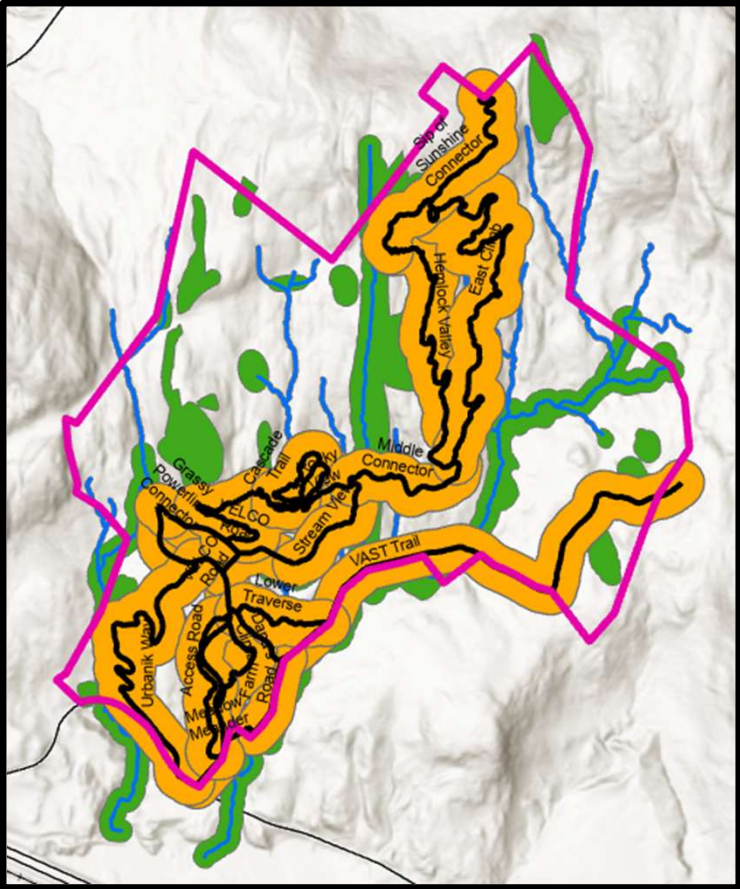


Figure-12

200-foot ZOI



200-foot ZOI

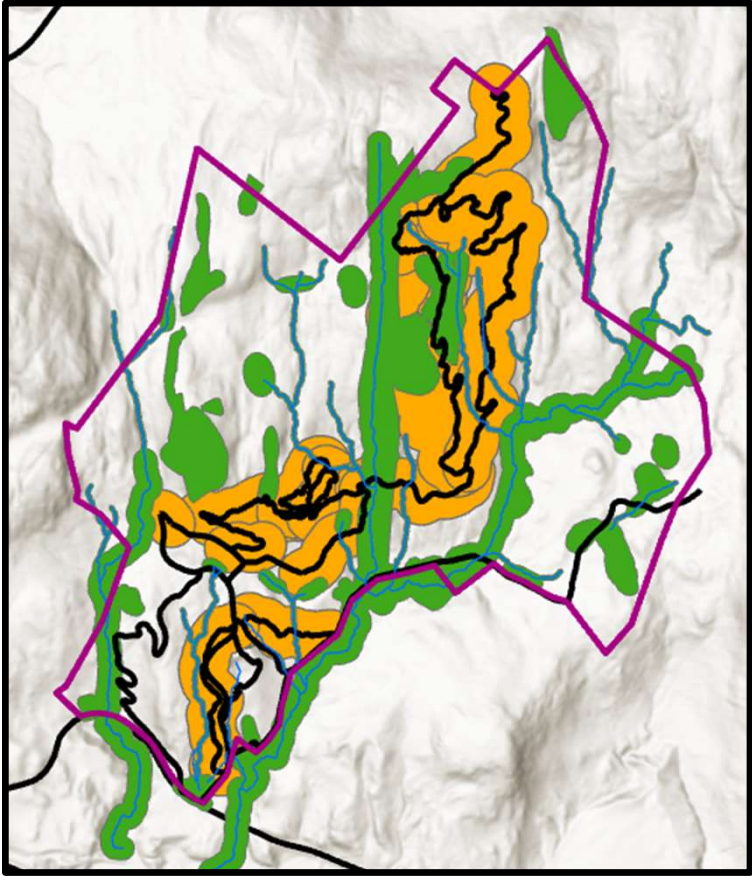


Figure-13

200-foot ZOI transparent

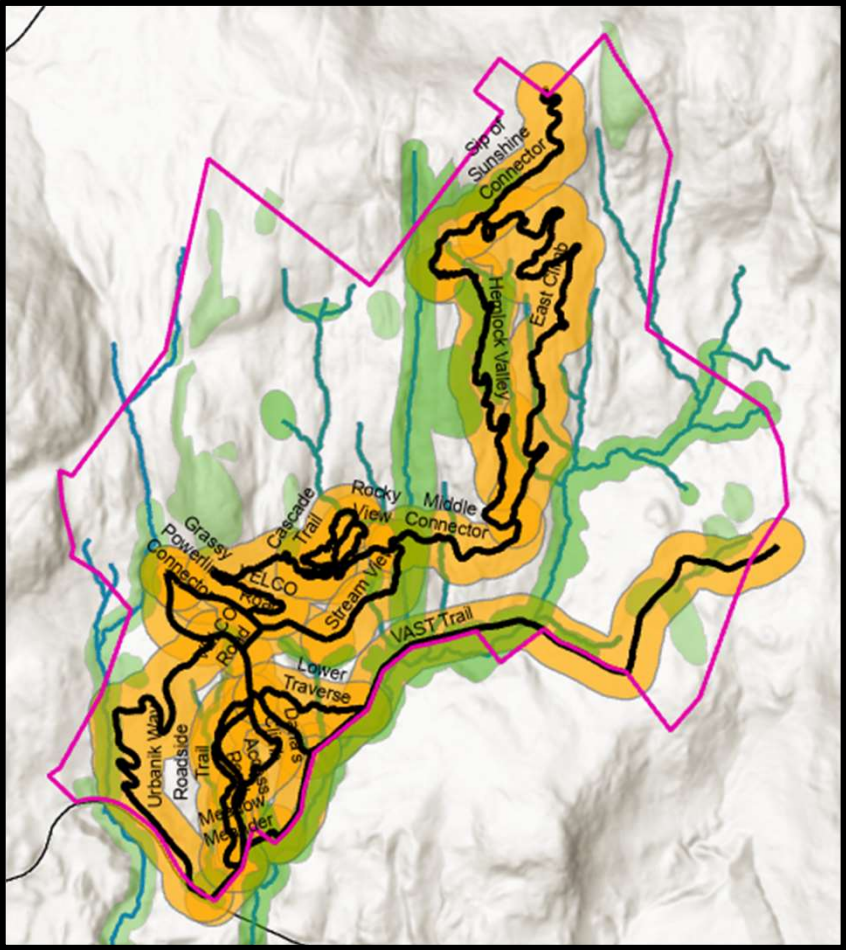
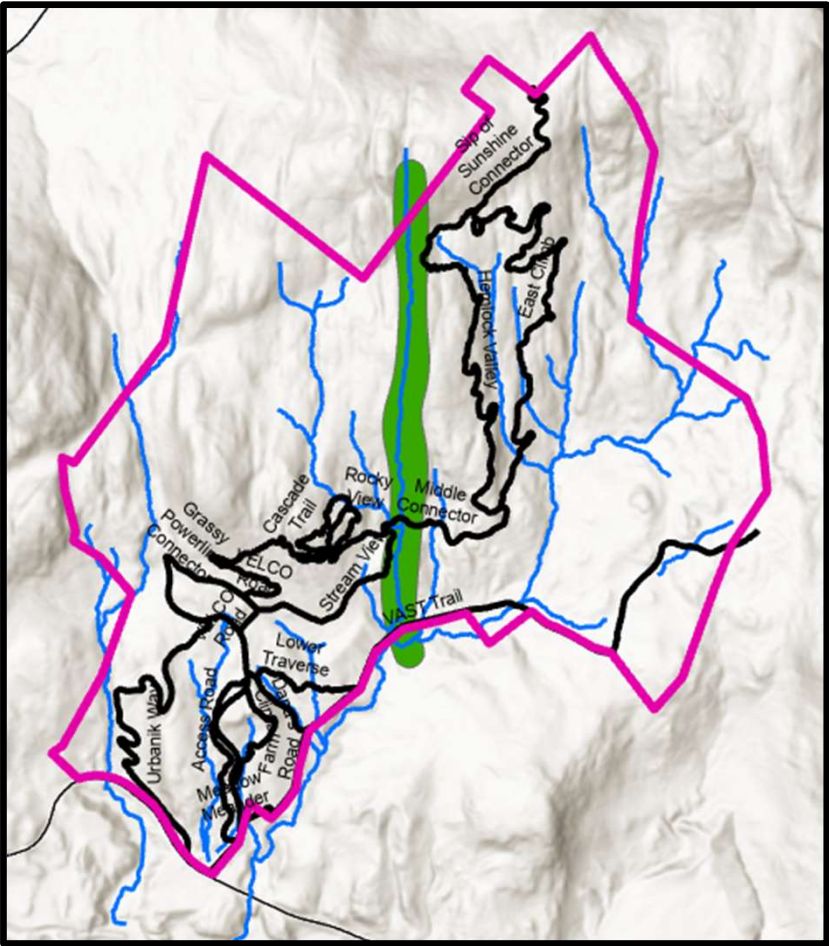


Figure-14

Wildlife Corridor



200-foot Buffer

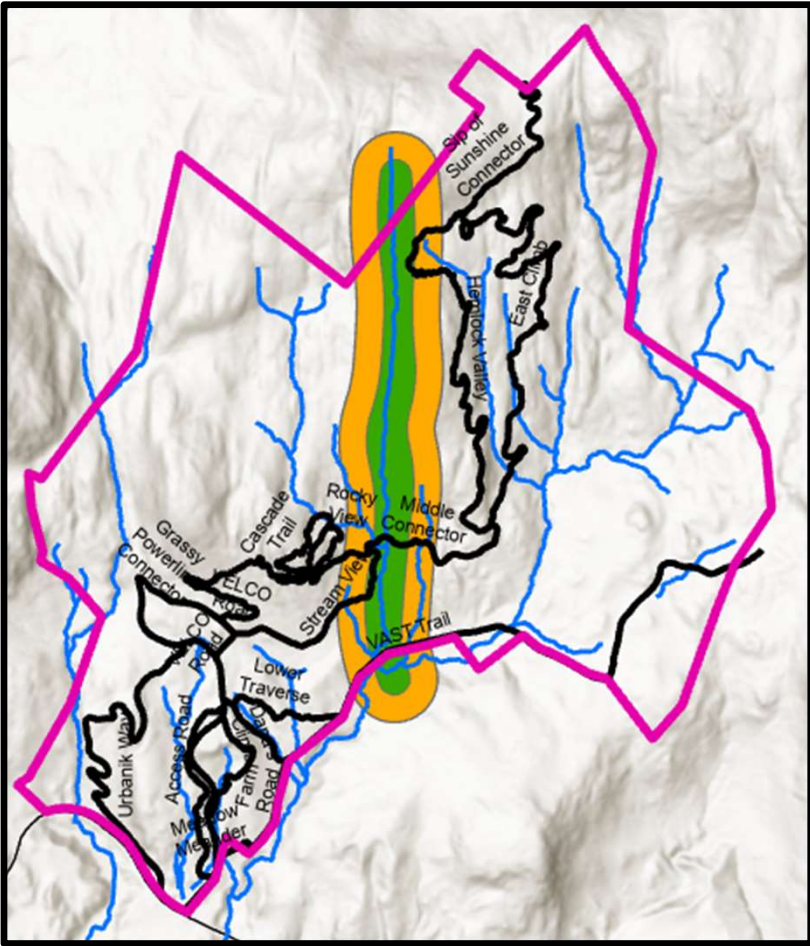
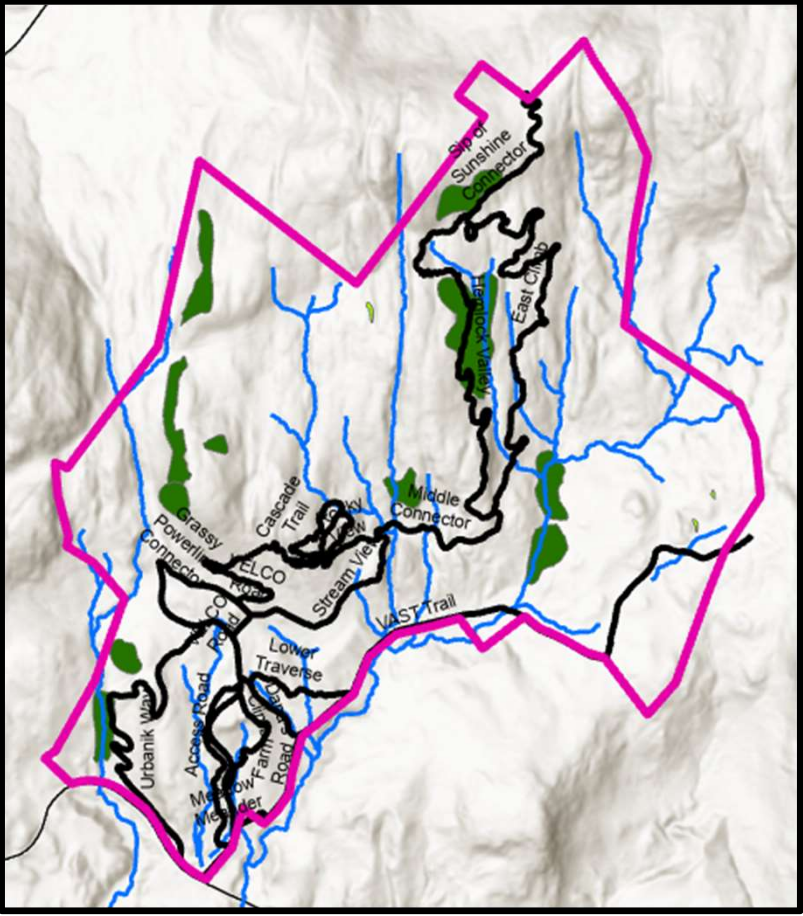


Figure-15

Hemlock-Red Pine



200-foot Buffer

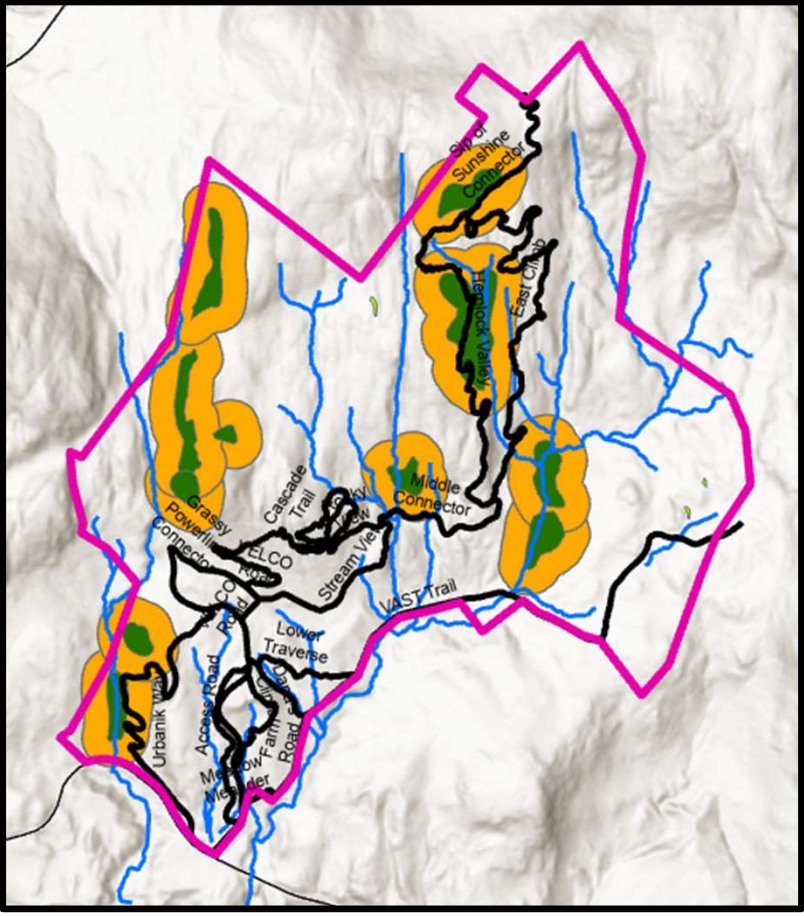
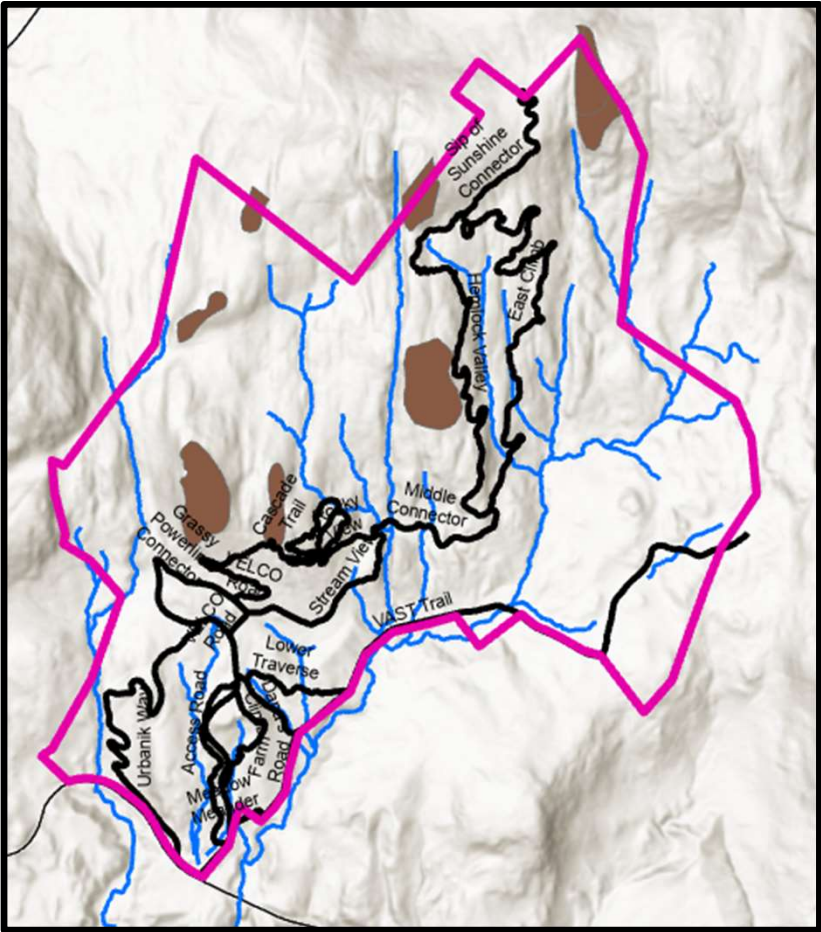


Figure-16

Dry Oak



50 (red) / 100 (Yellow)-foot Buffer

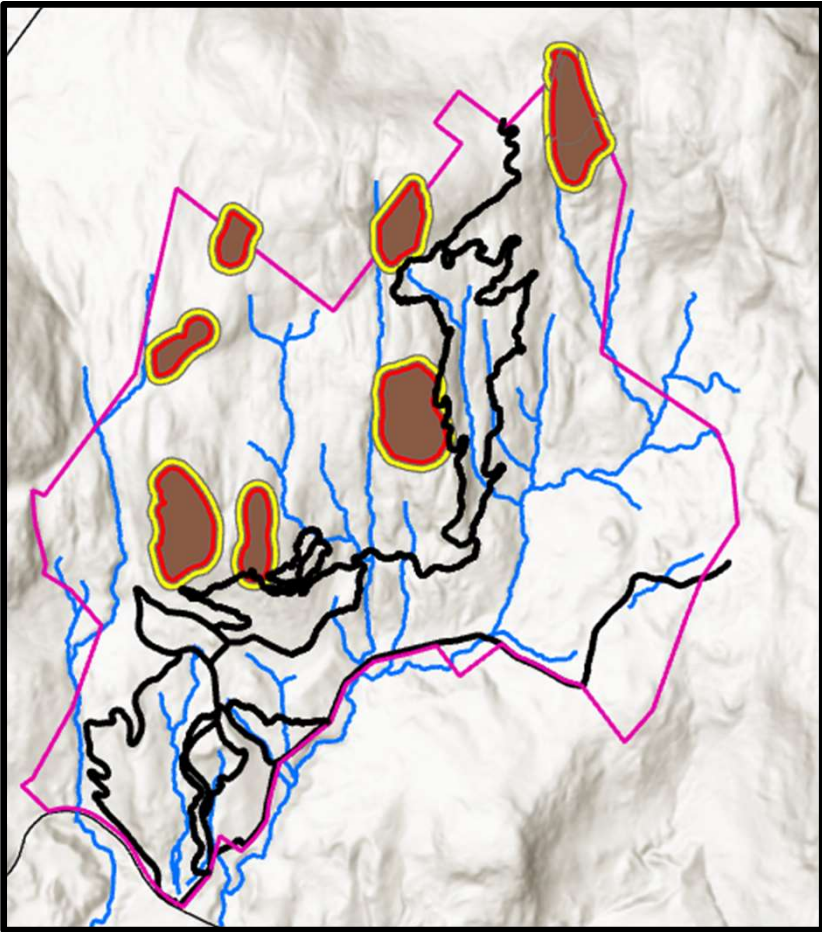


Figure-17

Combined Trails
Field Naturalist Study
Natural Communities Sensitivity

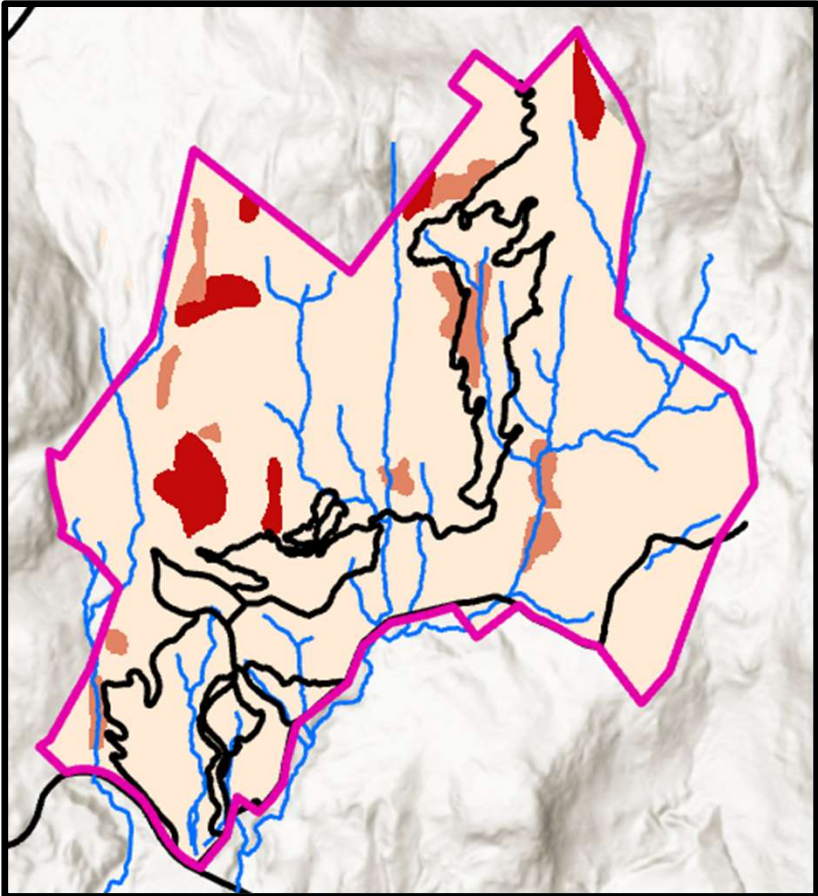
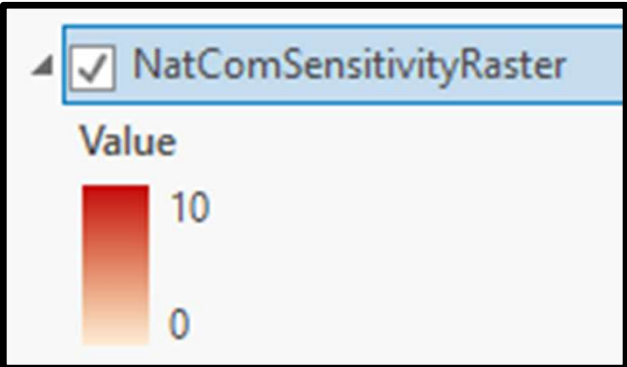


Figure-18

Vernal Pools
200-foot Buffer

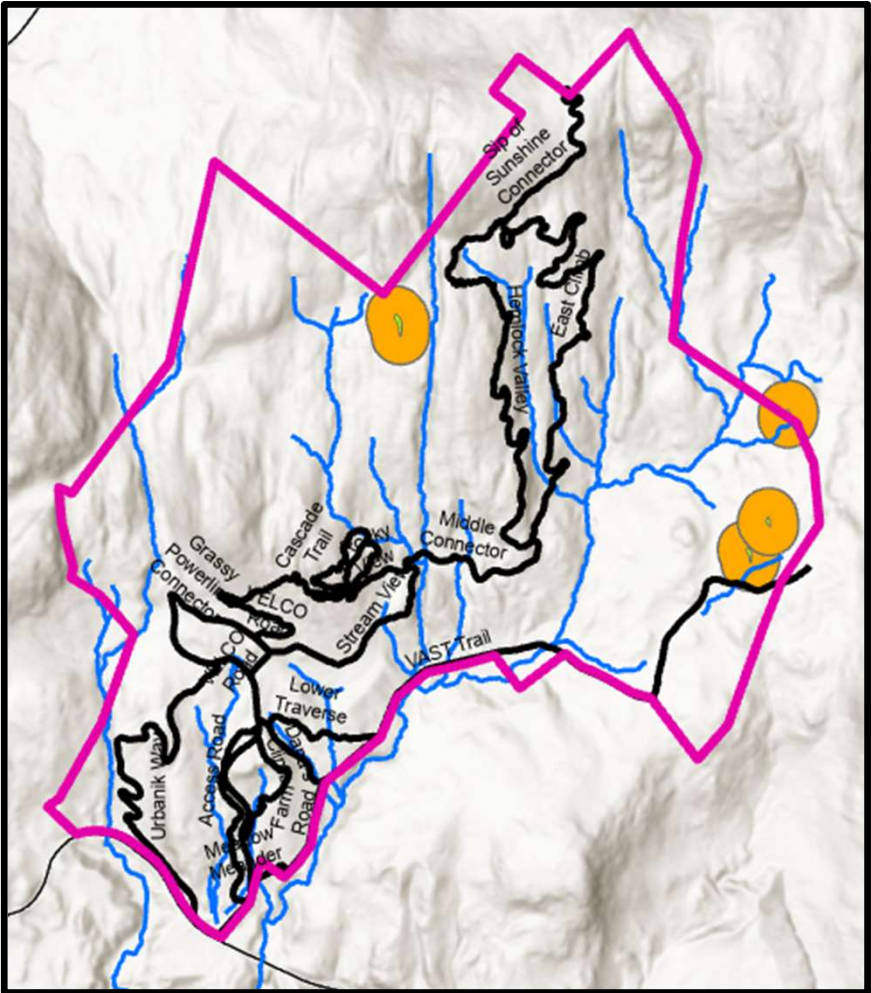
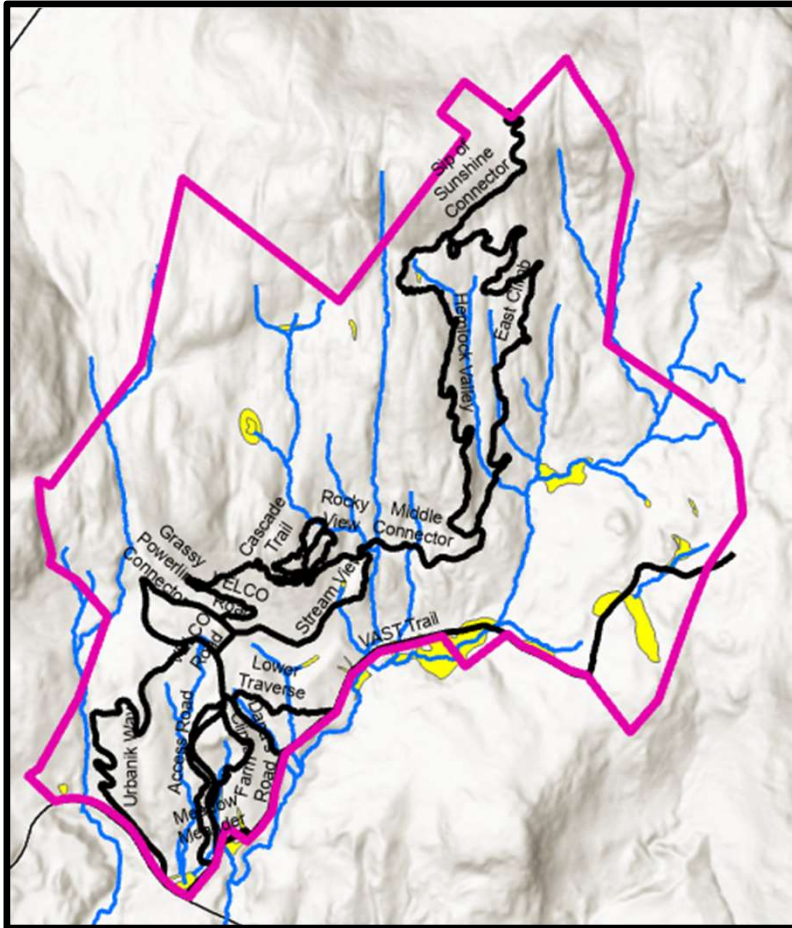


Figure-19

Wetlands



30 & 200-foot Buffer

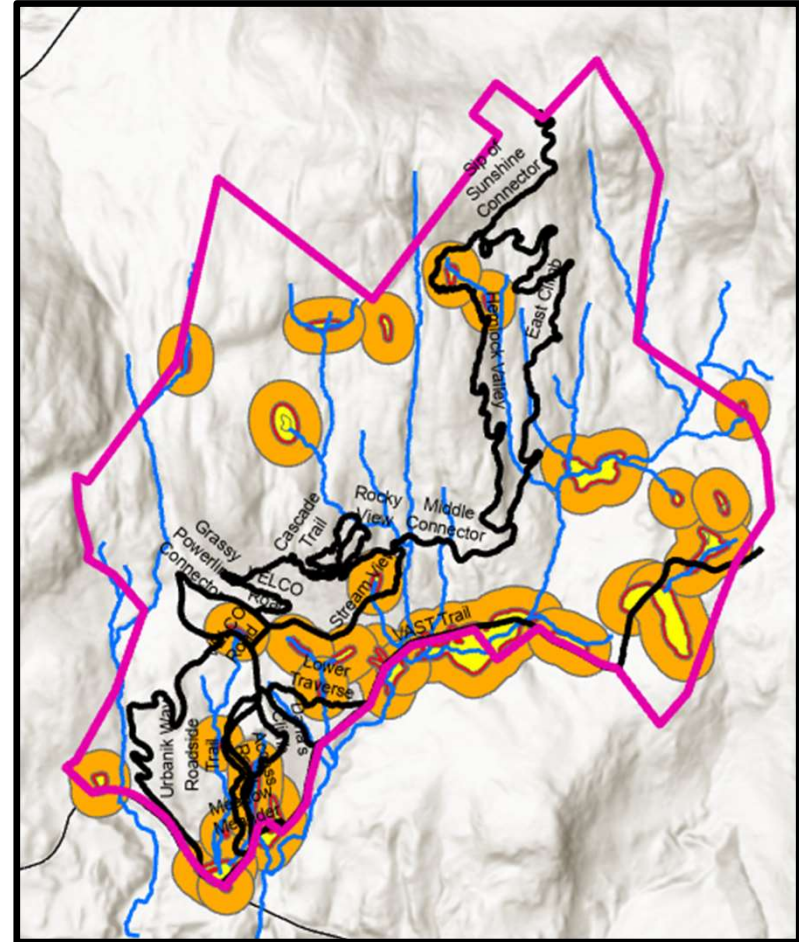


Figure-20

STA Mast Stands

100-foot buffer

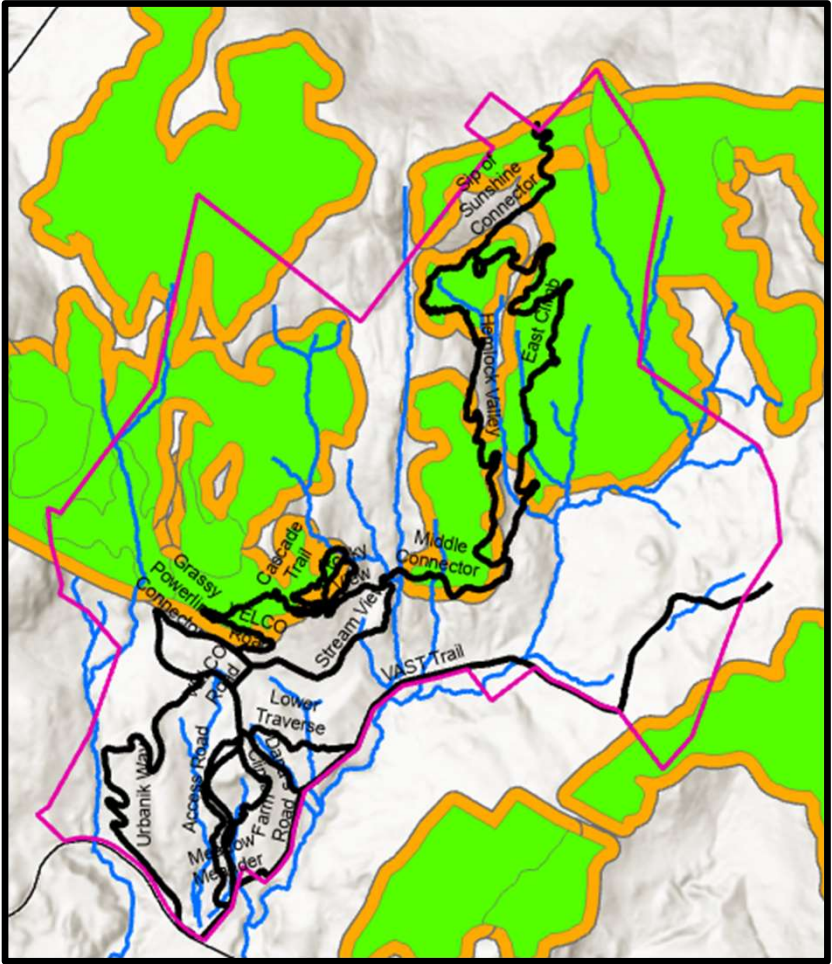
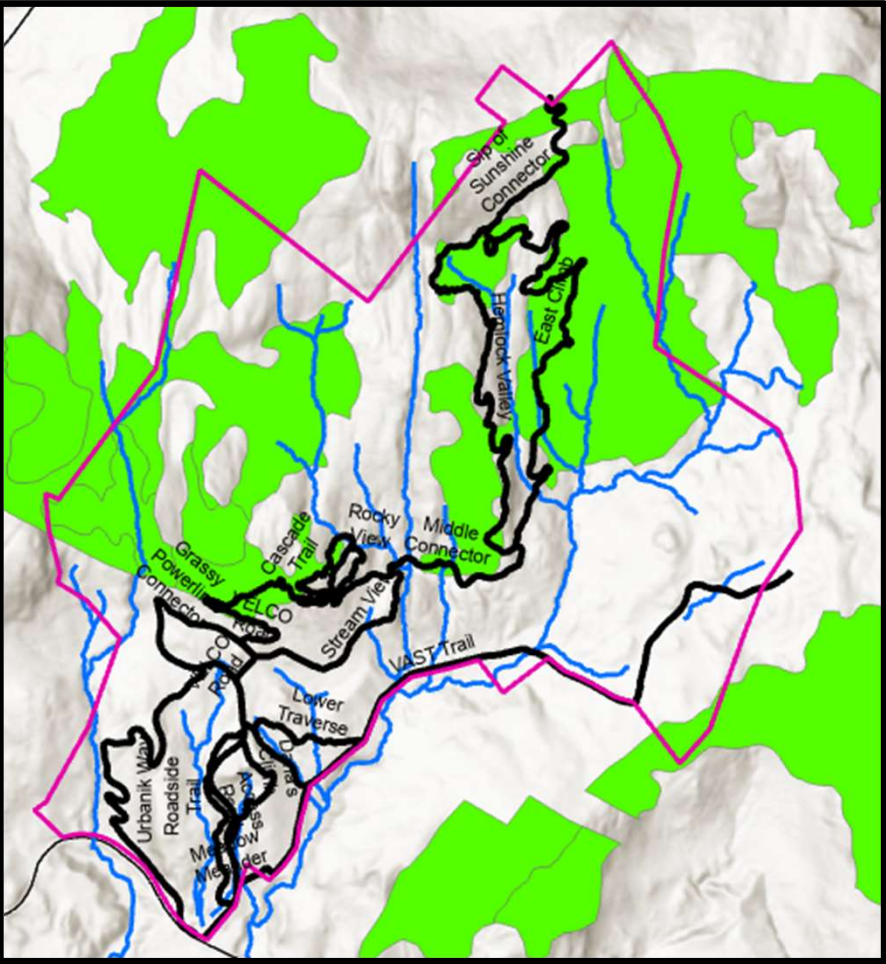
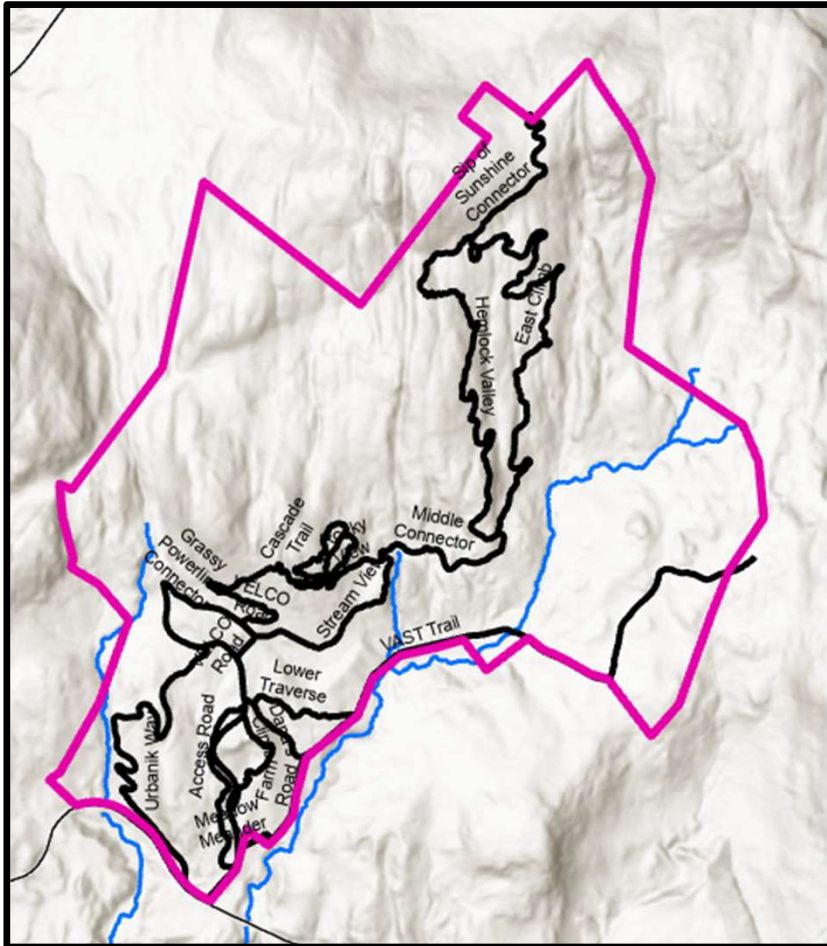


Figure-21

Perennial Streams



50-foot buffer

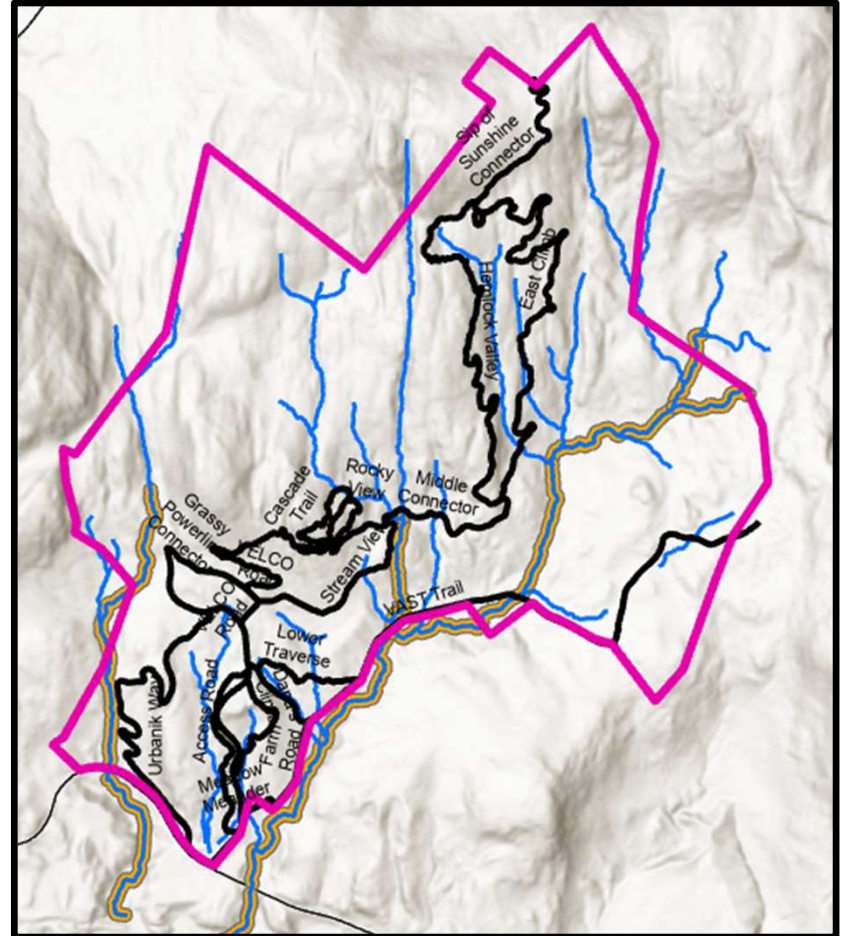
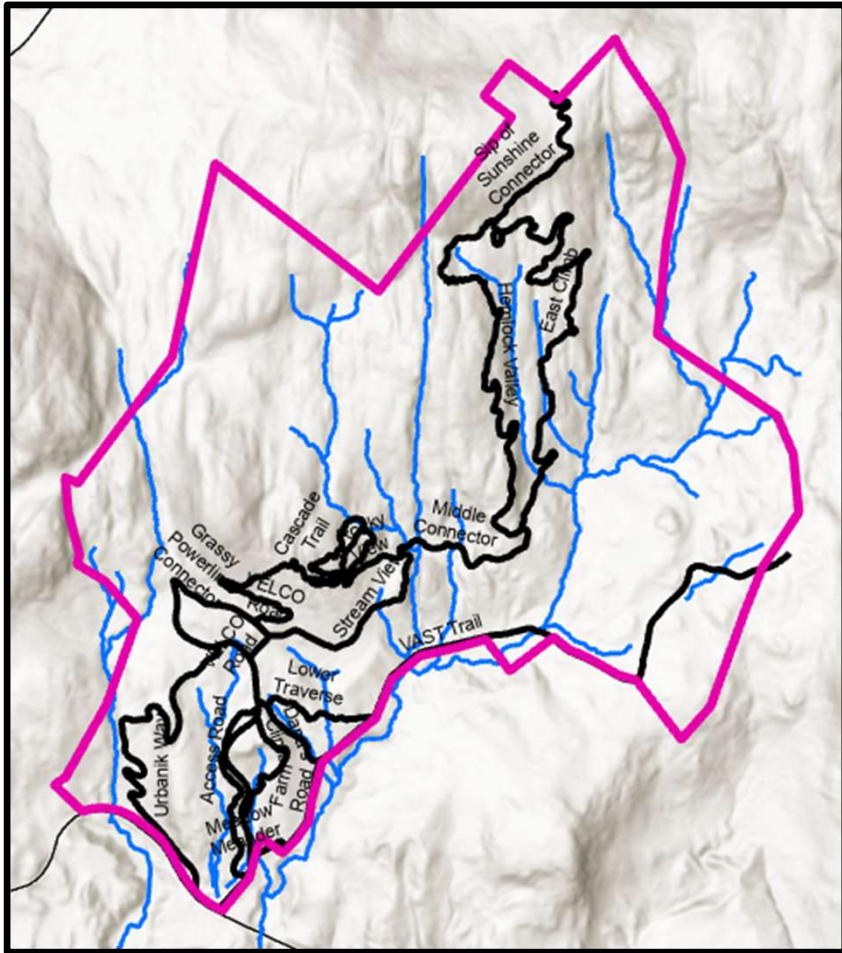


Figure-22

Intermittent Streams



50-foot buffer

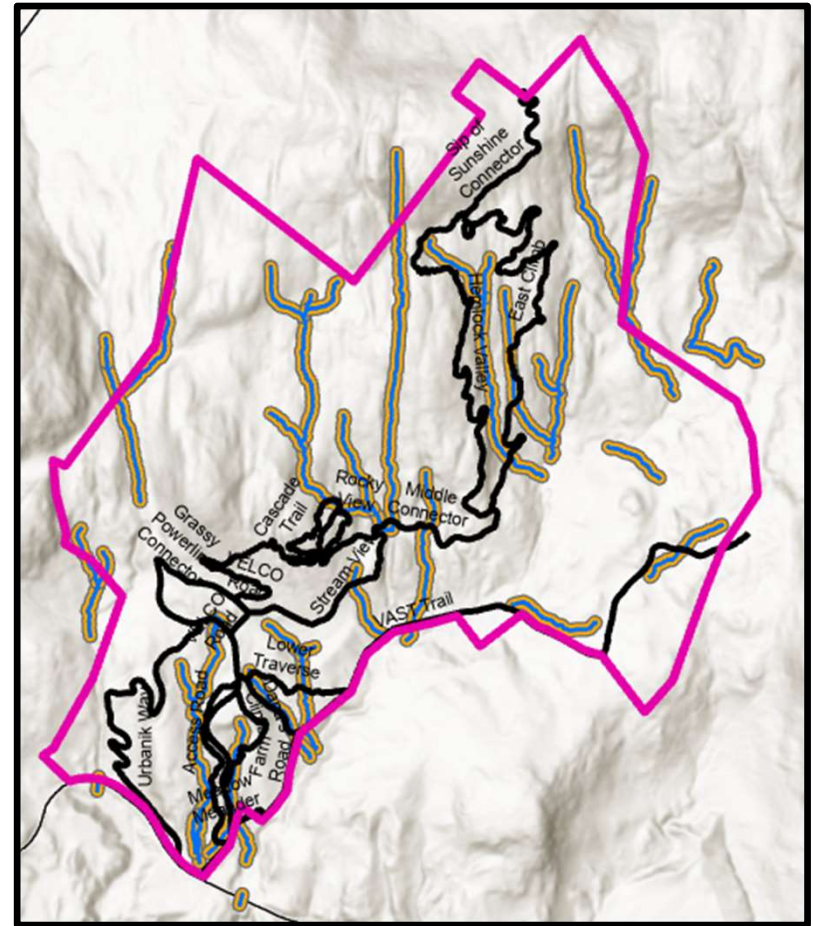
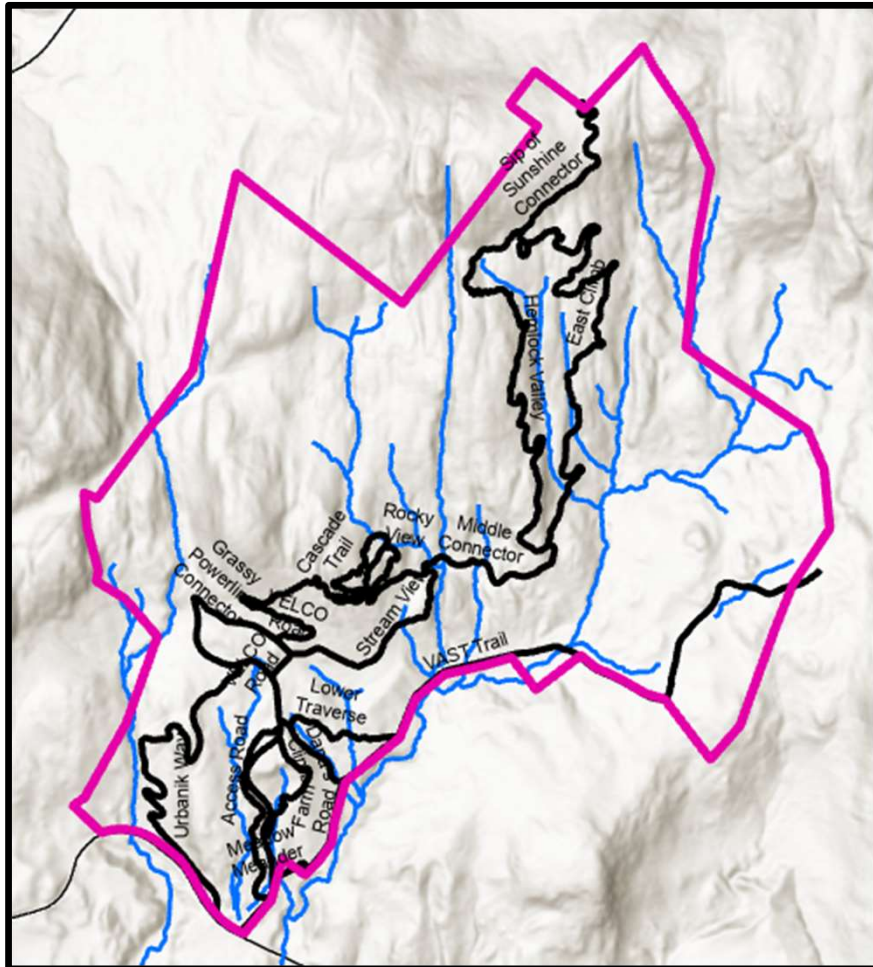


Figure-23

Perennial and Intermittent Streams



50-foot buffer

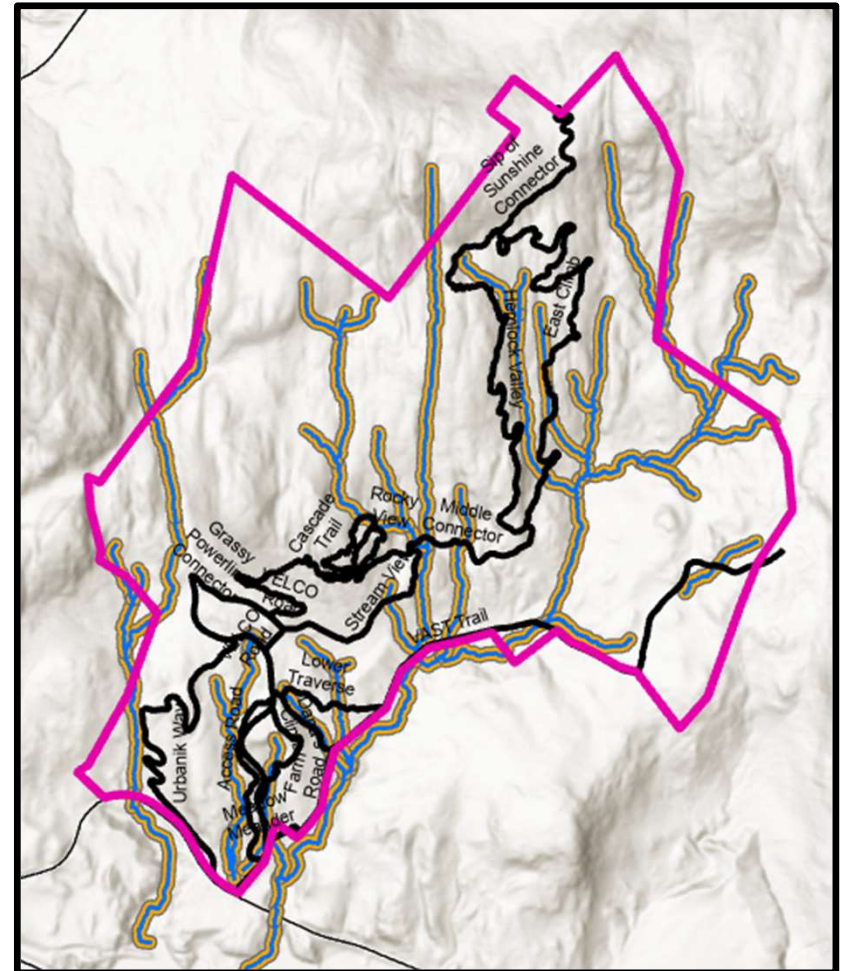


Figure-24

Combined Trails
ANR Uncommon Natural
Communities

▣ Uncommon Natural Communities

COMMUNITY TYPE

- ▣ Palustrine
- ▣ Terrestrial

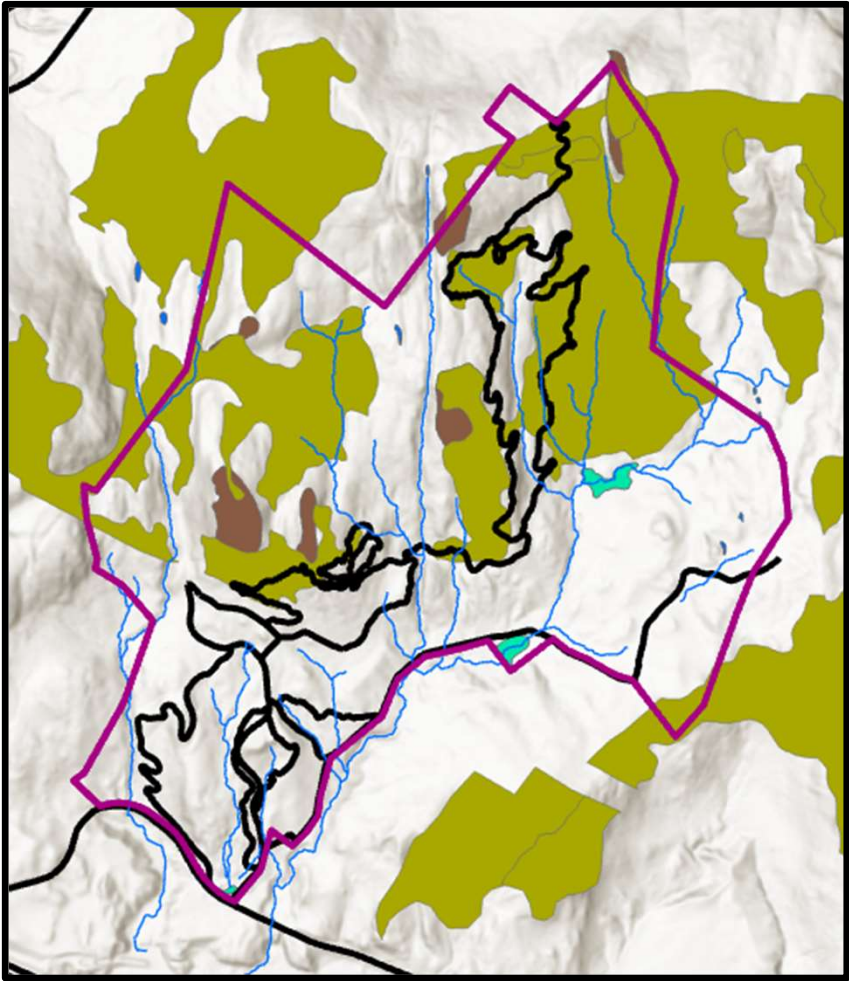


Figure-25

Field Naturalist Study
Deer Wintering

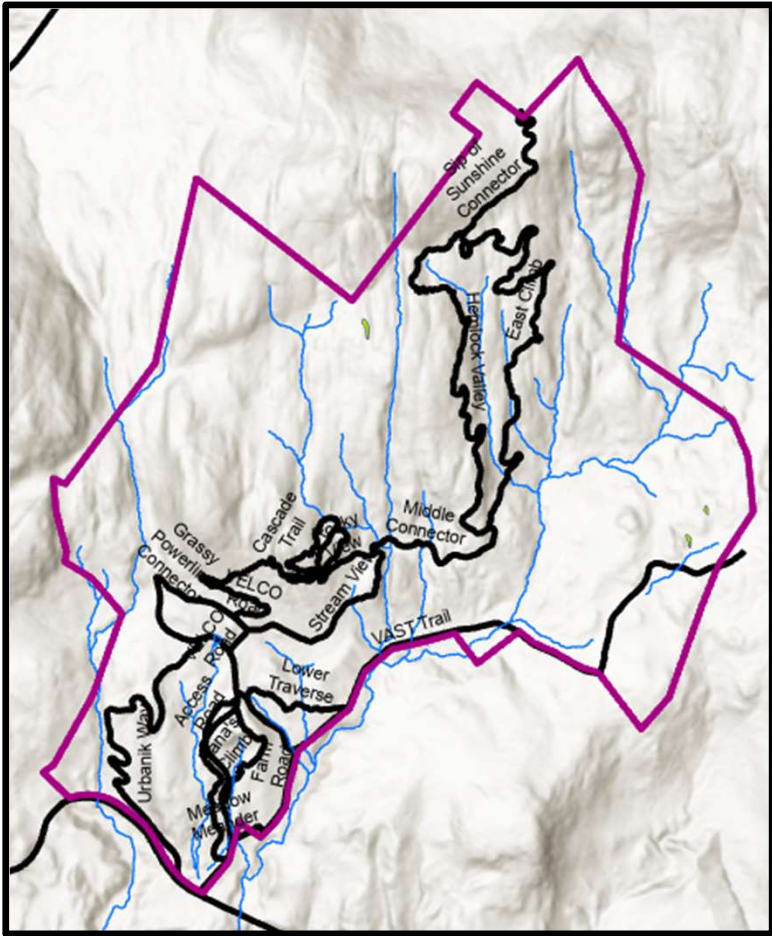
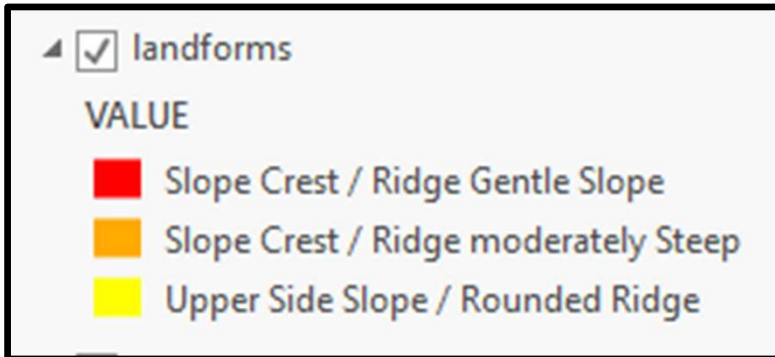


Figure-26

Contours and Ridge Lines

Red Contour: ≥ 900 feet



Note areas above 900 feet

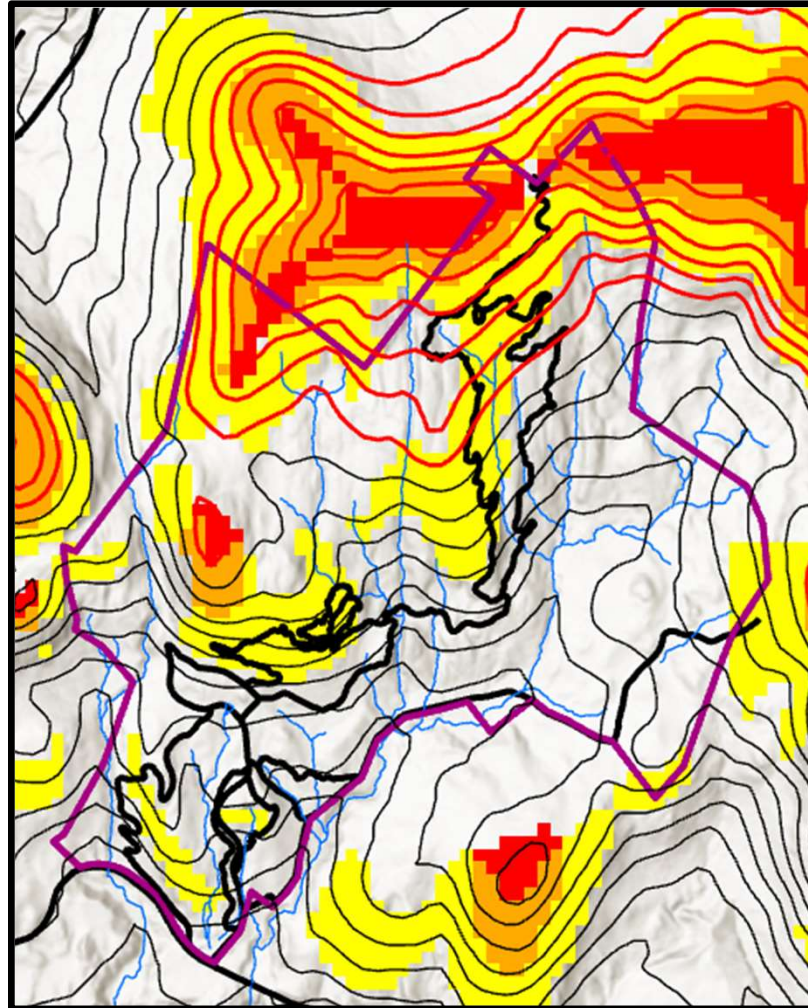


Figure-27

All Layers No Buffer / ZOI

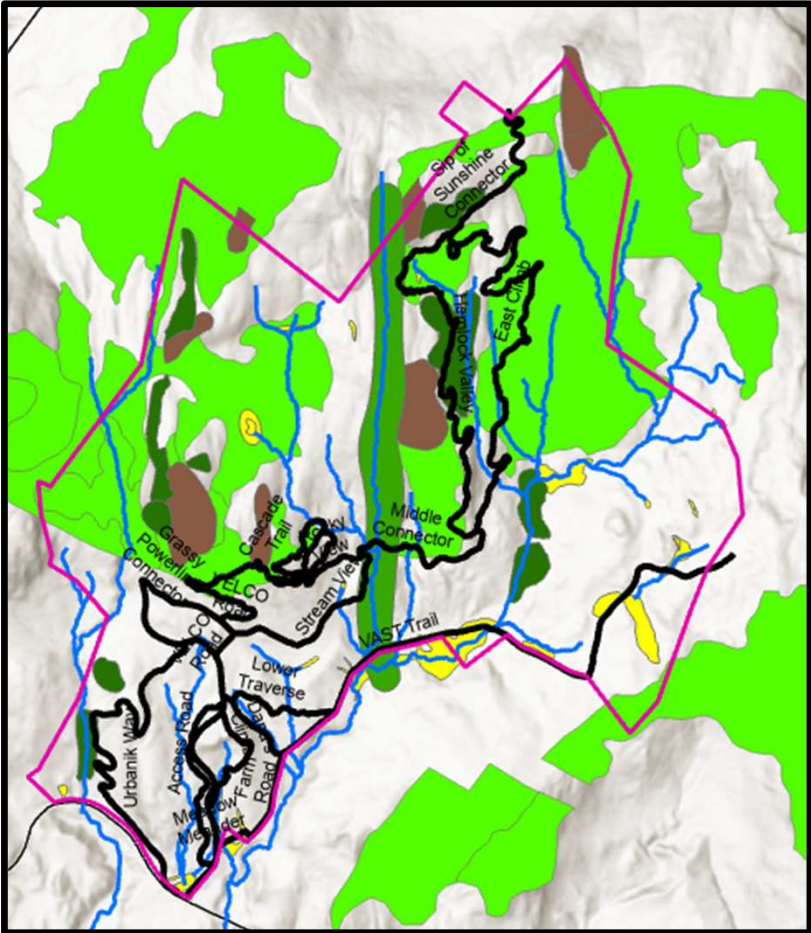


Figure-28

All Layers 50-foot ZOI

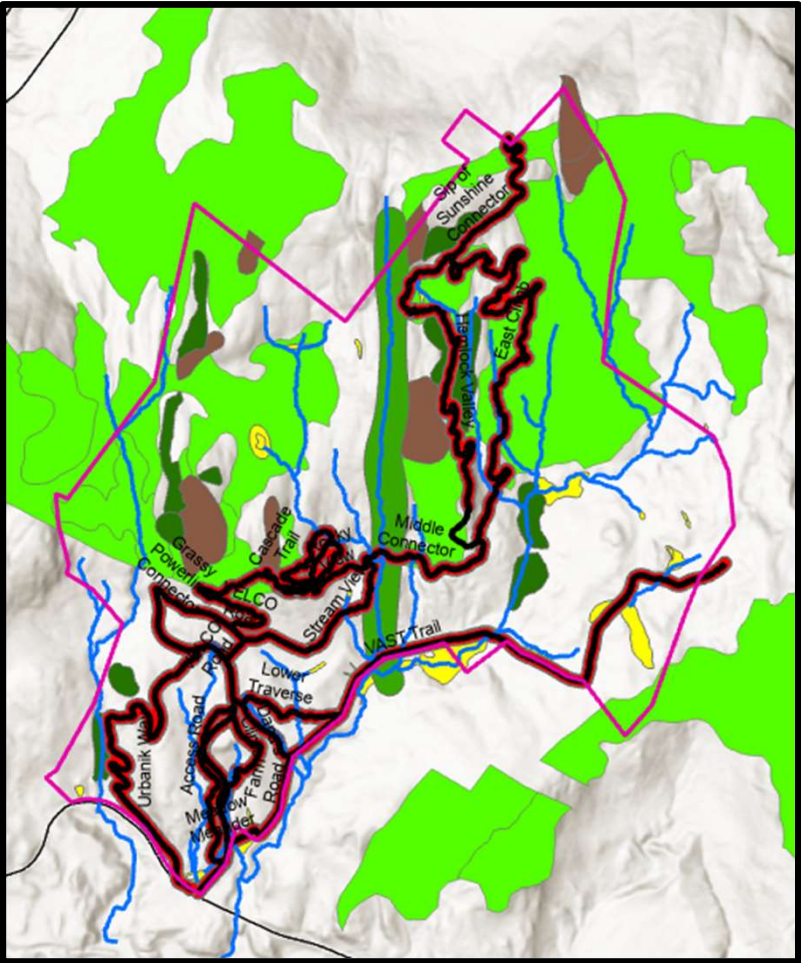


Figure-29

All Layers 100-foot ZOI

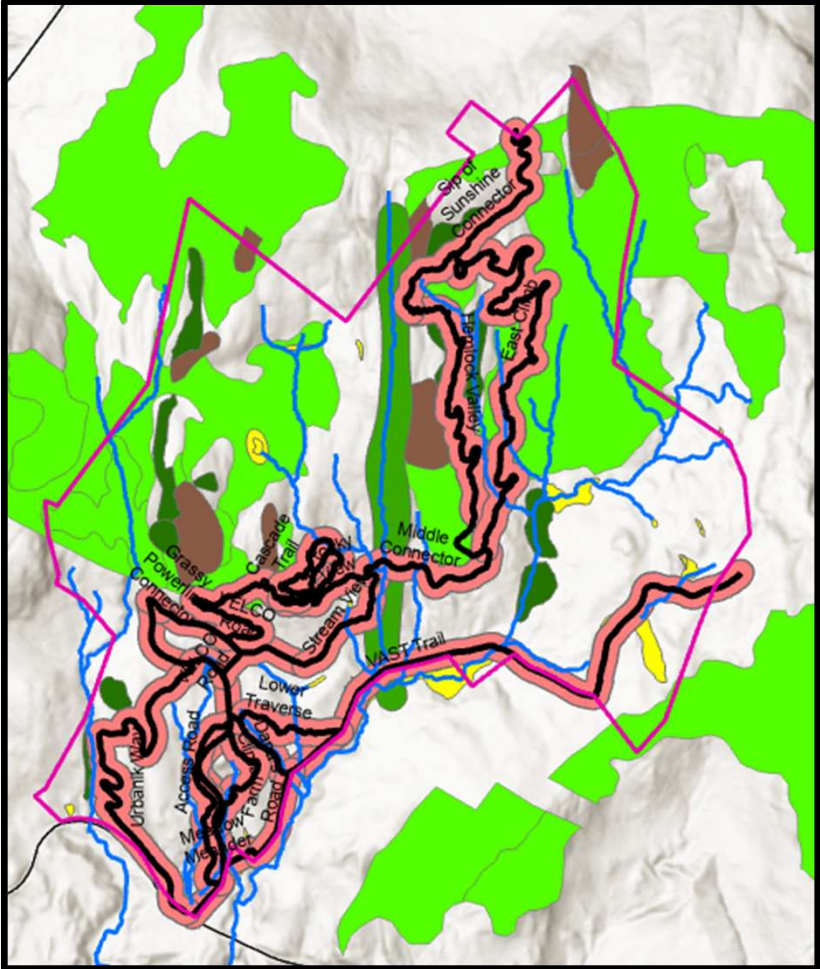


Figure-30

All Layers 150-foot ZOI

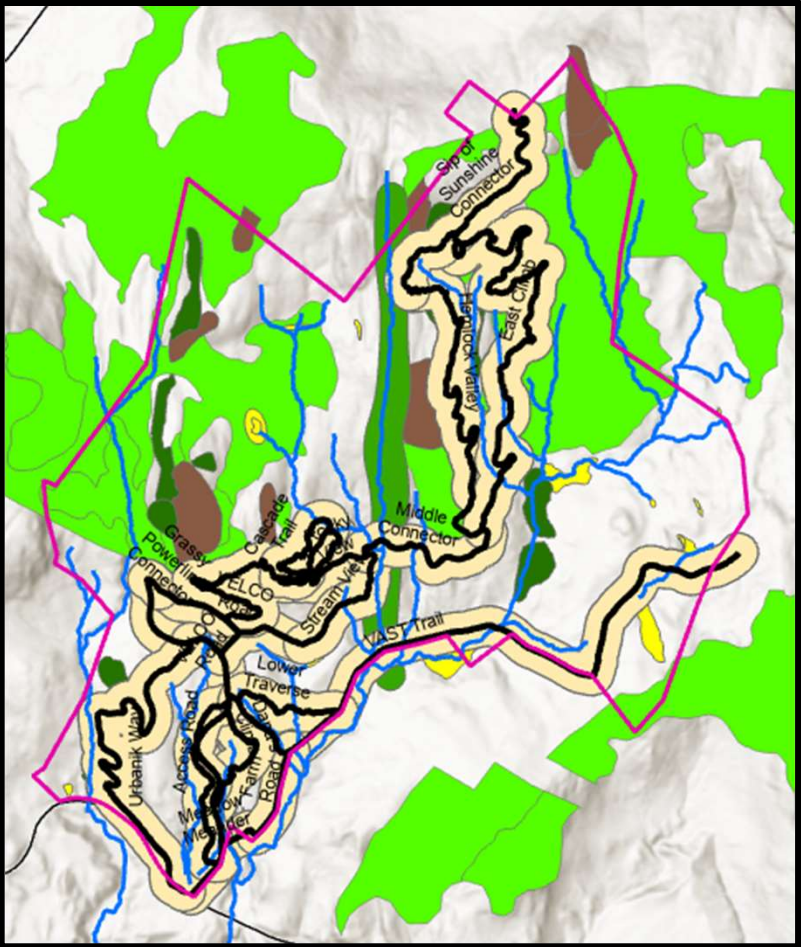


Figure-31

All Layers 200-foot ZOI

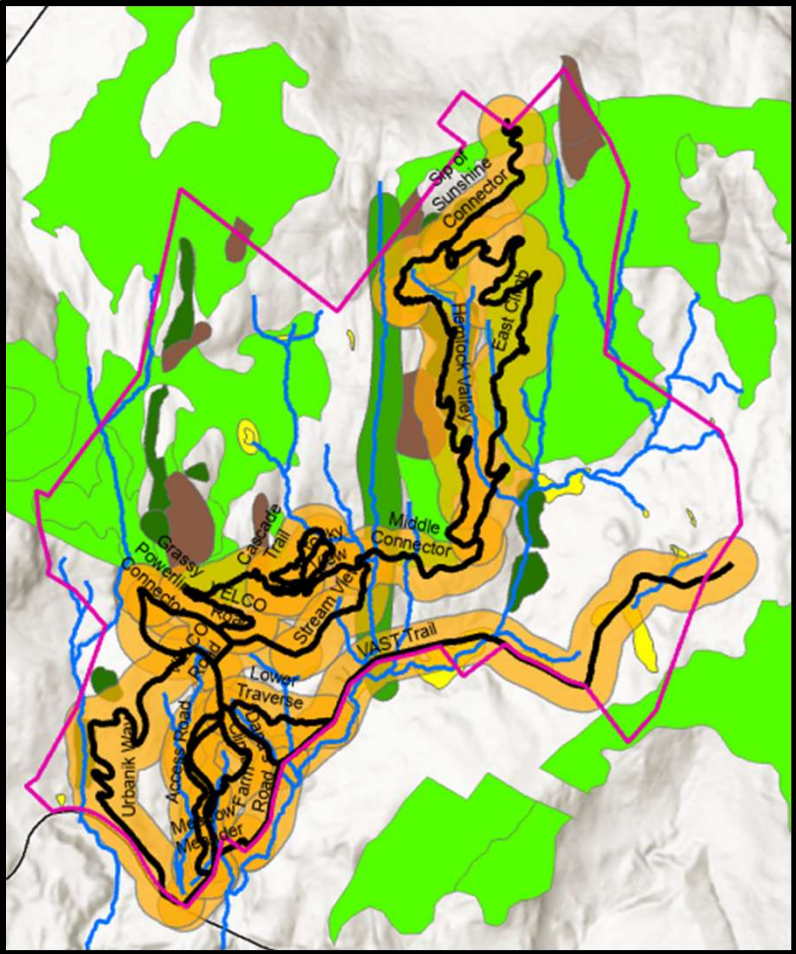


Figure-32

50-100-150-200-foot ZOIs

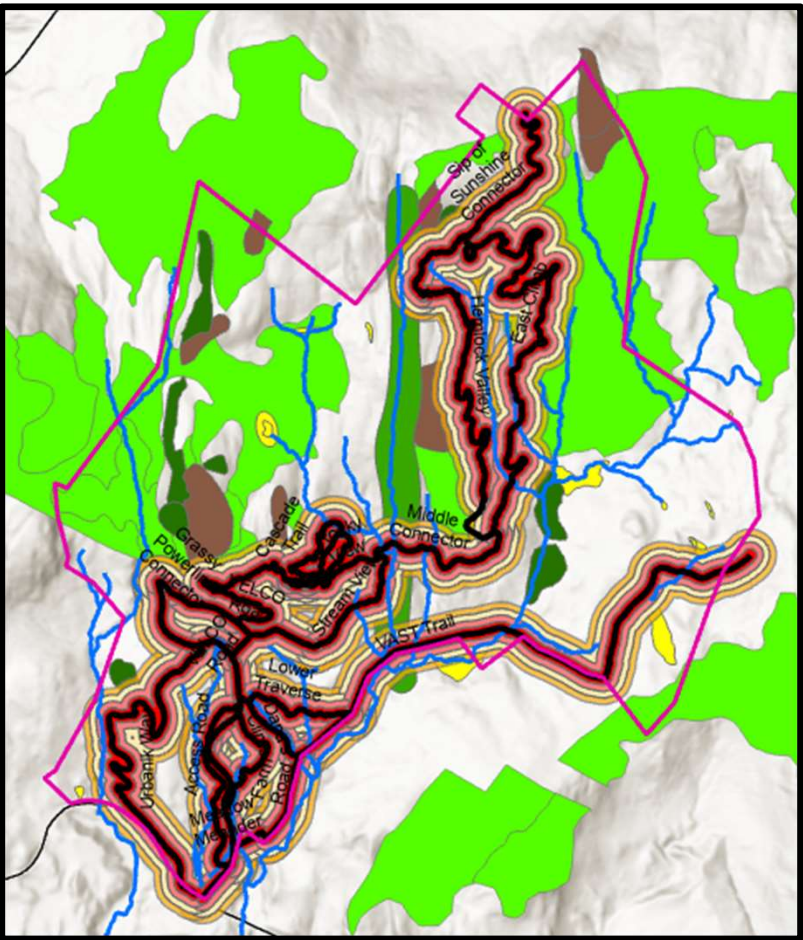
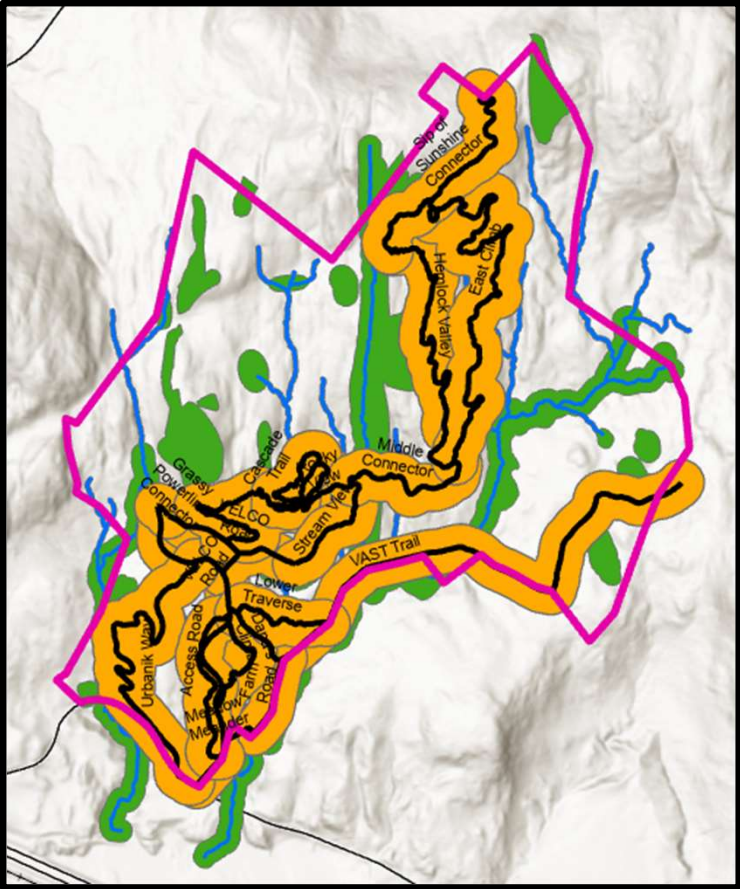


Figure-33

200-foot ZOI



200-foot ZOI

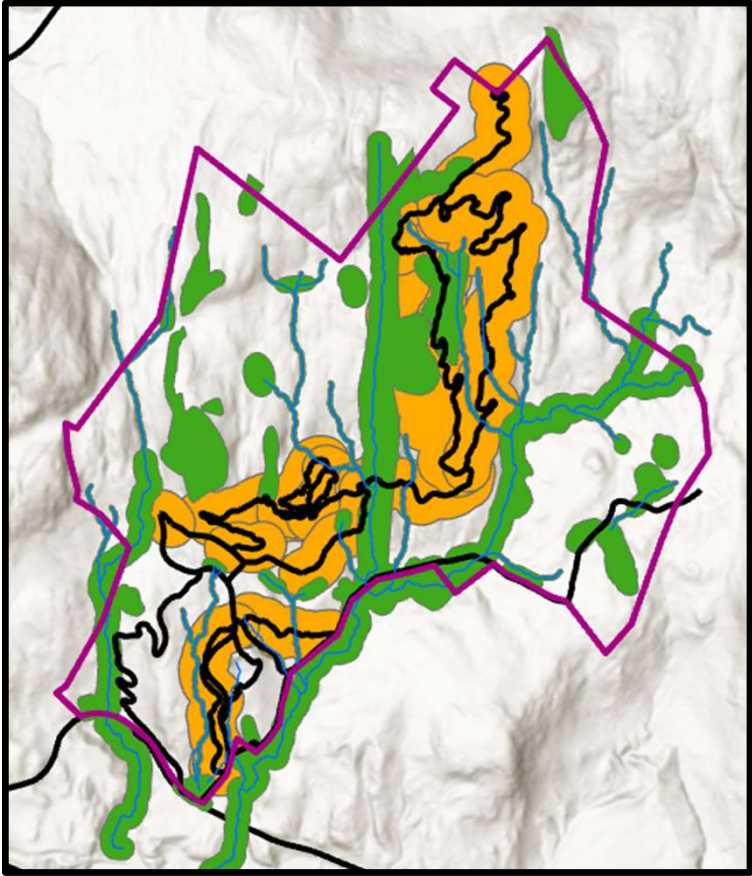


Figure-34 (same as Figure 13)

200-foot ZOI transparent

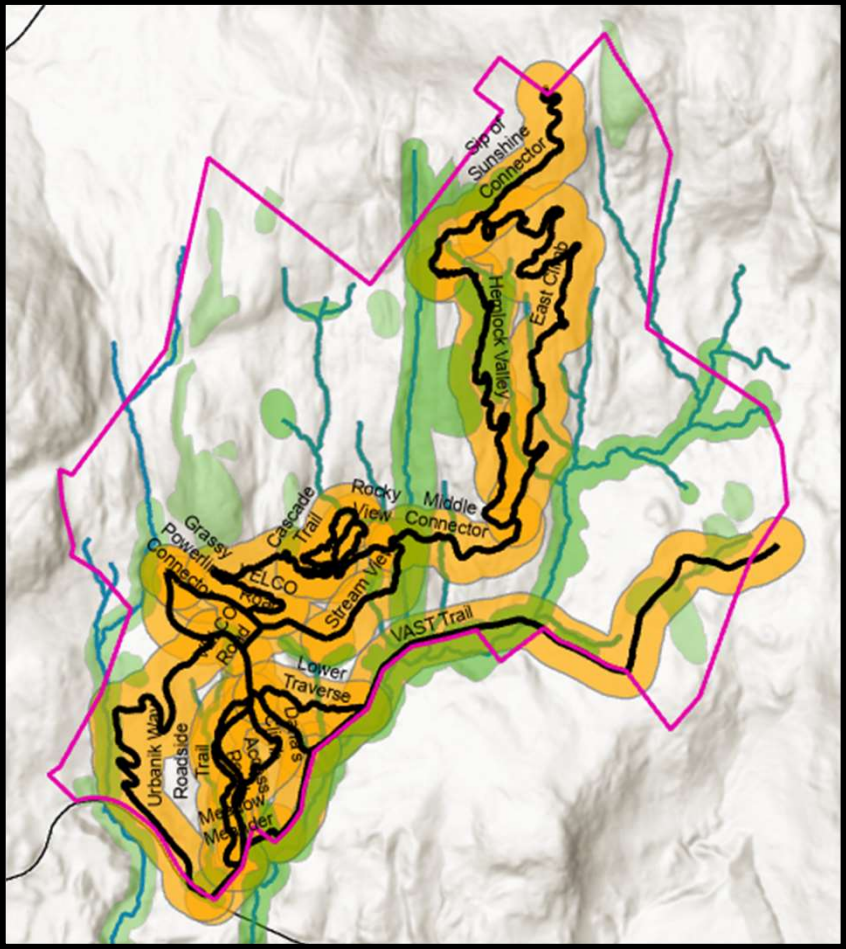


Figure-35

Ecologically Sensitive Areas
50-100-150-200-foot ZOIs

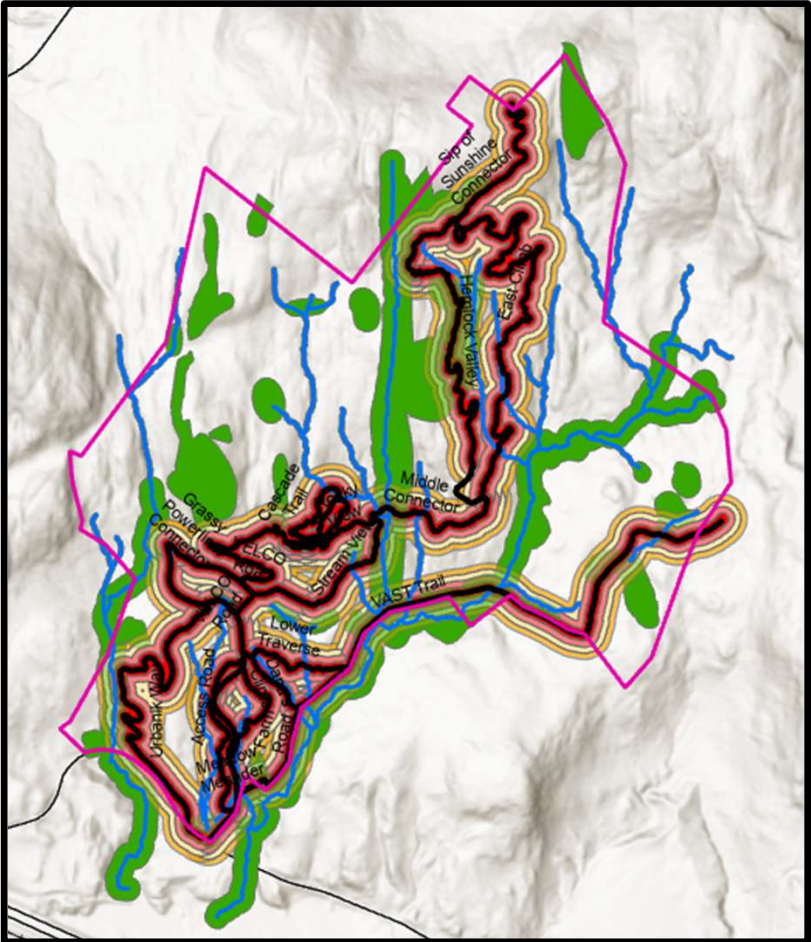
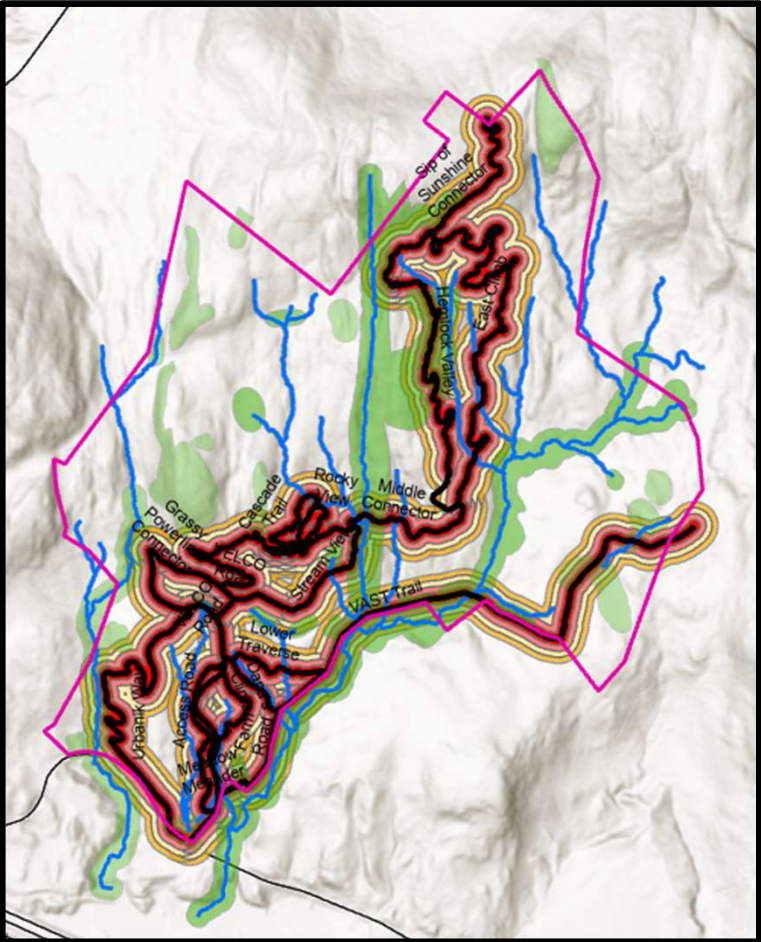


Figure-36

Ecologically Sensitive areas
200-foot ZOI Orange; 400-foot Yellow

