

DATE: February 18, 2022
FROM: Cathleen Gent
TO: Richmond Transportation Committee
RE: Packet for February 22 Meeting

As a reminder, our regular meeting takes place next Tuesday at 5:30 PM. As a reminder, this is a zoom-only meeting.

1. Meeting Agenda – February 22 - *Attached*
2. Minutes from February 8 Meeting – *Attached*
3. Committee Planning Session: Committee Priorities – We will continue our discussion from last meeting. Jon and Chris are still working on the draft purpose statement for consideration during the meeting.

Ahead of our meeting, I will tweak the Google doc file, with a list of our projects.

4. UPWP FY22 Project Updates - Ravi will provide updates for both projects.
 - Sidewalk Scoping – *Attachments: Ravi will send those to us under separate cover.*
- local concerns meeting is March 17th at 6 pm.
 - Phase 2: Pedestrian and Bicycle Master Plan – South End – *No attachments*
We will recap the local concerns meeting.
5. Route 2 Repaving Update – *Attachment: Selectboard's letter to VTrans*
Ravi will provide any additional updates.
6. Speed Study Report – *Attachment: Speed Study Report Final.pdf – in particular, please see recommendations on pages 8-9*
Josh Arneson and Ravi received a speed study report from CCRPC for Huntington, Kenyon and Hinesburg Roads. Staff had requested this review based on the requests received from Town residents.
7. AARP Walkability Audit Tool – *No attachments* – Ravi has arranged for Kelly Stoddard-Poor of AARP to attend our March 8th meeting to provide tips and answer any questions we may have about the Walkability Audit Tool. At Tuesday's meeting, we will consider any questions we may want to get to Kelly before she attends the March 8th meeting.
 - Reflecting on Allen's wife's interest and other town committee's interest in the project, one key question is what is the scope of what we want to do – how many audits – and goals for the project.
 - Kelly may have some advice about how big to make the project and perhaps can provide us with contacts from towns that have performed the audits.
 - Other questions pertain to project management: coordination with volunteers, other town committees; tips for recording information, gathering tabulations, writing the reports, and ensuring that the audit results will be used as the town moves forward with improving walkability.
 - One other question for Kelly might be
8. Grant Opportunities

a. Building a Better America grant opportunities – *Attachment: Information Sheet (this was in last meeting's packet as well)*

Following up from last meeting's discussion, Ravi conferred with CCRPC staff Eleni Churchill and Christine Forde about the list of grants in the Building a Better America information sheet. Here is Eleni's response (in part):

"Hi Ravi, Municipalities will be eligible to apply for these new discretionary grants included in the new Infrastructure (Investment and Jobs) Act but at this point there is no guidance from US DOT on most of these grants. Hopefully, the guidance will start coming out this spring so you can have an idea what's required for the application as well as funding. In addition, we are still waiting for Congress to pass an appropriations bill before we receive any of the new funding."

Based on the information from Eleni, Ravi is recommending that we wait until April to discuss these grant opportunities further.

b. Better Places Grant – Link to State web site: <https://accd.vermont.gov/community-development/funding-incentives/better-places>

Ravi will provide information from what he learned at the February 10th training for this grant program.

9. Old and New Business

- Agenda items for next meeting – AARP Walkability Tool Audit –
- Future of Town Center and Library Buildings meeting- Jon Kart, Allen Knowles and I can share highlights from the meeting

[New – will add to the agenda during meeting]

1. Memo from Josh Arneson regarding committee members' terms – three RTC members have terms ending in 2022.

2. Capital Plan – The Selectboard is discussing the Capital Plan at their meeting on Tuesday. Here are two files for the draft capital plan that include sidewalks:

<http://www.richmondvt.gov/wp-content/uploads/2018/11/2c1-2023-CAPITAL-PLAN-NARRATIVE-DRAFT-021822-1.pdf>

<http://www.richmondvt.gov/wp-content/uploads/2018/11/2c3-2023-Building-and-Infrastructure-Capital-Plan-1.xlsx>

3. Ravi will walk us through the files ahead of the Selectboard discussion that night.

10. Adjourn

Richmond Transportation Committee
Tuesday, February 22, 2022 @ 5:30 PM
Online via Zoom

PLEASE NOTE: In accordance with Act 78, this meeting will be held online and conference call via Zoom only. You do not need a computer to attend this meeting. You may use the "Join By Phone" number to call from a cell phone or landline. When prompted, enter the meeting information provided below to join by phone.

For additional information about this meeting, please contact Ravi Venkataraman at 802-434-2430 or at rvenkataraman@richmondvt.gov.

This meeting is accessible via Zoom:

<https://us02web.zoom.us/j/87491380245?pwd=bG8xTU5qQzcyd0xwVWJHTlgrYTBBQT09>

Meeting ID: 874 9138 0245

Passcode: 303372

Join by Phone: (929) 205-6099

AGENDA

1. Revisions to Agenda
2. Approve Minutes from February 8 meeting
3. Committee Planning Session: Committee Purpose Statement & Priorities
4. FY22 UPWP Projects Update
 - Sidewalks Scoping
 - o Review consultant preliminary designs
 - o Planning for local concerns meeting
 - Phase 2: Pedestrian and Bicycle Master Plan – South End
 - o Recap local concerns meeting
5. Route 2 Repaving Update
6. Speed Study Report
7. AARP Walkability Tool Audit
8. Grant Opportunities
 - Building a Better America grants
 - Better Places grant
9. Old and New Business
 - Agenda items for next meeting
 - Town Center Visioning Meeting recap
10. Adjourn

Richmond Transportation Committee

Meeting Minutes – February 8, 2022

All participants attended the meeting remotely.

Committee members present: Cathleen Gent (chair), Chris Cole (vice-chair), Mark Damico, Jon Kart, Allen Knowles

Others present: Ravi Venkataraman (Town Planner), Daniel Mullen

A quorum was reached and the chair convened the meeting at 5:33 PM.

1. Revisions to Agenda: Gent added two items to the end of the agenda: Better Places grant program and Future of the Town Center and Library Buildings meeting

2. Meeting Minutes: *January 25, 2022 minutes were moved by Cole, seconded by Damico. The minutes were approved unanimously.*

3. Committee Planning Session

Gent introduced the topic, stating that having a planning session was discussed last meeting as a way to review and prioritize our numerous projects either now or soon-to-be underway, along with bigger concepts such as village identify or streetscape designs for the village area. Kart said it would be nice if the committee had a short sentence of our work that people could understand. Gent referenced the Transportation Implementation Plan and committee report for the 2021 Town Report to show the variety of what we do or aspire to do. Committee members brainstormed ideas for such a purpose statement. Kart, Cole, and Damico offered specific suggestions. Kart and Cole will prepare a draft purpose statement in advance of the next committee meeting. Gent will send out the suggested language shared during the meeting in the chat notes. Cole noted that it would be very helpful to have a spreadsheet with each project at various stages (planning, scoping/feasibility, construction). Damico said that former committee member James Floyd created such a spreadsheet. Venkataraman will send a link to the google drive, where the document is stored. Gent will review/revise that spreadsheet in advance of the next committee meeting.

4. UPWP FY22 Project Updates

a. Sidewalks Scoping – Venkataraman said he talked last week with the project team. Stantec will provide preliminary designs ahead of the next committee meeting for the three project locations. Venkataraman will shortly begin advertising the local concerns meeting which is scheduled for March 17th at 6 PM.

b. Phase 2: Pedestrian and Bicycle Master Plan – South End – Venkataraman thanked members for posting in Front Porch Forum for the local concerns meeting scheduled for tomorrow night. The consultant team is prepared for that meeting.

5. Route 2 Repaving Project Update - Kart and Knowles provided an update about the Selectboard meeting last night, which they attended. The selectboard plans to meet with VTrans to review every part of the road without a five-foot shoulder. The Transportation Committee discussed possible options to proceed. *Kart offered the following motion, seconded by Knowles: The Transportation Committee supports the Selectboard's desire to learn more about the Route 2 paving project, in particular the constraints on the road shoulders that will negatively affect vulnerable users. The best approach is to hold a public meeting separate from a Selectboard meeting, with VTrans project managers and the public. We encourage the Selectboard to invite our elected representatives at the legislature so they have an awareness of the town's concerns. The motion was passed unanimously.*

Transportation Committee member Chris Cole noted that it is typical for VTrans project managers to meet with community members before starting a project in the form of a public local concerns meeting. The fact that a public local concerns meeting was held years ago warrants a public meeting at this time, because of the changes to existing conditions, interests, policies, and staff.

6. Bridge Street & Railroad Street Update and Light Fixtures – Venkataraman said there is no update on the project because staff are still exploring options and discussions with Dan Noyes (who owns Railroad Street ROW) about light fixtures. The Transportation Committee did discuss light fixture options from Venkataraman that are available from Green Mountain Power. Venkataraman noted that GMP does not offer ornamental fixtures without cost at this time. Damico noted that ornamental fixtures are not viable without underground utilities being in place. Damico and Kart said that, in recognition of night sky pollution, downlit fixtures are preferred. Venkataraman said the RSW series are downlit. *Motion by Damico, seconded by Kart, that the Transportation Committee recommends the RSW series for this application. The motion was approved unanimously.*

7. AARP Walkability Tool Audit – Gent reviewed the pieces of the AARP walkability tool audit. Venkataraman has reached out to AARP and Kelly Stoddard-Poor is available to attend a Transportation Committee meeting in March to provide tips on using the audit tool. There was consensus that the committee would like to move forward with the project and would like Stoddard-Poor to attend a meeting, perhaps March 8th. Knowles said his wife and a neighbor with mobility challenges would like to be on an audit team. Gent will reach out to people who have said they are interest in the project to let them know the transportation committee is moving forward with next steps.

8. Grant Opportunities

a. Building a Better America grant opportunities – Committee members reviewed the grant materials descriptions. A number of grant programs will begin accepting applications in the coming months, therefore, Gent suggested this is an important time for the committee and staff to identify projects and opportunities. Cole pointed out that some federal grant programs are administered through the state, which is a different process, and some appear available directly to municipalities. Venkataraman said he will coordinate with CCRPC staff about which programs will be run through the state, and what Richmond projects may be most appropriate for specific grants. Gent asked committee members to review the grant programs ahead of the next meeting.

b. Better Places Grant – Vermont Department of Housing and Community Development, and other agencies – Gent and Damico pointed out the grant program seems a good fit for village identity potential or streetscape design planning. Venkataraman is attending information session and will provide more information at the next meeting.

Daniel Mullen joined the meeting at this time and Damico left the meeting. Mullen explained that he is coordinating communications with several town committees for the planning commission's tracking of activities related to the town plan. Gent will communicate with Mullen about adding that topic to a future Transportation Committee meeting.

9. Old and New Business –Meeting on the Future of Richmond Town Center and Library Buildings – will be held on February 17. Committee members are invited to participate. Knowles pointed out that sidewalks on the east side of Bridge Street would be an asset for getting to the town center and the library.

10. Adjourn – At 7:17 PM, motion to adjourn by Cole, seconded by Knowles. Approved unanimously.

-Minutes taken by Cathleen Gent



TOWN OF RICHMOND

RICHMOND TOWN CENTER
203 Bridge Street, P.O. Box 285
Richmond, Vermont 05477



February 16, 2022

Secretary Joe Flynn
Vermont Agency of Transportation
219 North Main St.
Barre, VT 05641

RE: Comments and Questions on Engineering Plans for Richmond-Bolton STP 2924(1)

Dear Secretary Flynn,

I would like to begin by thanking you for having your team at VTrans send the engineering plans for the Rt. 2 repaving project for review by the Town. We understand that these plans were provided to Town Staff on January 13, 2022 with a deadline of January 21, 2022 for comments. Richmond Town Manager Josh Arneson replied on January 21, 2022 with comments. We appreciate that in response to those comments the following changes were made:

- There will be a minimum of four-foot shoulders throughout the highway interchange area. This is an improvement from the plans which showed shoulders in that area as narrow as three feet.
- There will be a "No Right Turn on Red" Blank-Out LED sign which will alert drivers entering the Bridge St. intersection from Jericho Rd. when traffic on Bridge St. has a left turn arrow.
- VTrans is open to scheduling a meeting to discuss the placement of stormwater structures on East Main St. and how those structures can better integrate with the sidewalks that the Town will install. We look forward to this meeting and to working on implementing a successful stormwater management plan.

However, given that Town staff only had one week to review and respond to the plans it is natural that there would be more questions and concerns raised after a more detailed review of the plans. The Richmond Transportation Committee reviewed the plans at their January 25, 2022 meeting. At this meeting there were concerns expressed about how many sections showed shoulders at less than five feet. The following motion passed unanimously.

- It is the opinion of the Transportation Committee that the shoulder widths identified in the VTrans plans between the Park and Ride and the village are more than pinch points and present an unsafe infrastructure for pedestrians, bicyclists and vulnerable users of Route 2 for transportation. The Transportation Committee requests VTrans to minimize the length of the pinch points and ensure five-foot shoulders as much as feasible without incurring exorbitant costs.

Mr. Arneson relayed the following concern to VTrans on January 26.

- On page 72 the shoulders are 1.5' and 3' in places. We request that these be expanded to 5'.

Matthew Bogaczyk of VTrans responded as follows:

- Specific to sheet 72, this section is just as vehicles are entering the village setting in Richmond. The road is sandwiched between a steep uphill slope on the left and a steep downgrade on the right. Unfortunately, the full 5' typical could not be carried through this section given the topographic constraints. The project is planning to reduce to an 11' lane and 3' shoulder beginning near the large gravel turn around drives and carrying into the sidewalk sections where it will replace the existing widths. You noted that there is a section where the should drops to 1' 5" on the left. This is due to an already steep embankment with a house very close to the road. We did not propose moving this slope closer to the house and potentially making it steeper. Instead, the shoulder is reduced to the necessary 1' 5" and then extended back to 3' all within approximately 100' before encountering the Town's sidewalk sections. The total distance with reduced shoulder widths is approximately 300' before reaching the curbed and sidewalk section.

This response is inadequate and it does not adhere to the agreement to maintain five-foot shoulders with the exception of a few pinch points. In an email dated October 26, 2021, VTrans Project Delivery Bureau Director Robert White stated "The project will install 11-foot travel lanes and five-foot shoulders within the above limits. There are six locations where this typical section cannot be continued due to bridges, culverts or topography that would require right of way acquisition." There appears to be enough Right Of Way in this area to accommodate the work. A reduced shoulder in this section of road, estimated to be 300 feet, would put pedestrians and bicyclists in a dangerous situation for the length of a football field, and one that is already dangerous due to the slope.

Following a discussion and further review by the Selectboard, the town is requesting a better understanding of all areas where the shoulders will not reach the agreed-upon five-foot width. Specifically, we request updated engineering plans which clearly highlight the sections where the shoulders will be less than five feet with explanations of what is restricting the shoulder width in each location. We would also like to schedule a meeting with VTrans to review and discuss these highlighted plans.

We look forward to receiving updated plans and meeting soon to review. Thank you for your attention to these important safety matters.

Thank you,



Christine Werneke, Richmond Selectboard Chair

CC:

Representative Jana Brown
Senator Philip Baruth
Senator Thomas Chittenden

Senator Virginia "Ginny" Lyons
Senator Christopher A. Pearson
Senator Kesha Ram
Senator Michael Sirotkin
Richmond Selectboard Vice Chair David Sander
Richmond Town Manager Josh Arneson
Richmond Road Foreman Pete Gosselin
VTrans Project Delivery Bureau Director Robert White
VTrans Project Manager Matthew Bogaczyk
VTrans Highway Safety & Design Program Manager Jesse Devlin
Stantec Senior Associate Marc Foisy
Nicholas Pappas, VTrans
Glenn Burgmeier, Stantec

Hinesburg Road, Huntington Road, and Kenyon Road Speed Study

1. Introduction

The Town of Richmond requested the Chittenden County Regional Planning Commission (CCRPC) staff to investigate and evaluate the posted speed limits on Hinesburg Road, Huntington Road, and Kenyon Road. In order for a legislative body to determine a safe and reasonable speed on town highways, a traffic engineering investigation (speed study) is required by the Vermont Statutes Annotated Title 23, § 1007. This document provides supporting findings that were used to develop recommendations for establishing speed limits on Hinesburg Road, Huntington Road, and Kenyon Road.

2. Existing Conditions

Hinesburg Road

Hinesburg Road is a paved road classified by the state as a Class II Town Highway and functionally classified as a Major Collector. The study area for this road extends from the intersection of Huntington Road to the Hinesburg Townline. The CCRPC staff installed an Automatic Traffic Recorder (ATR) along Hinesburg Road at the location shown in Figure 1 to collect traffic volume and speed data. Data were collected between June 09, 2021 and June 17, 2021. Figure 1 shows the study area and ATR location.



Figure 1: Hinesburg Road and ATR Location

Windshield Survey

A windshield reconnaissance survey was conducted in both travel directions along Hinesburg Road by the team to identify safety related issues, roadway characteristics and roadside safety hazards. The following is a list of findings from the survey:

1. The study area section of the road is paved, and roadway width varies between 20 and 24 ft.
2. Very narrow asphalt/grass shoulders exist on both sides of travel lanes.
3. Shoulders are not marked along the road.
4. The posted speed limit is 45 mph.
5. The traffic at the intersection of Hinesburg Road, E Hill Road and Kenyon Road (Fays Corner) is controlled by STOP signs on E Hill Road (west approach) and Kenyon Road (north approach),

whereas Hinesburg Road has free movement for the northbound and westbound traffic. Traffic from the south and east approaches navigate a sharp 90-degree curve to continue to travel on Hinesburg Road.

6. A warning sharp curve sign supplemented with an advisory speed of 15 mph is posted on both south and east approaches.
7. Some driveways are obscured due to vegetation at some locations along the study area.
8. Significant embankment slope along an edge of the road at some locations in the study area.

Crash History

There were 46 crashes, including a fatal crash, reported in the last five years along Hinesburg Road. A crash report summary is attached in the Appendix. Most of the crashes were reported as single vehicle crashes with property damage only. Most common contributing circumstances for crashes were reported as distracted driving, driving too fast for conditions and failed to yield right of way. There are two high crash segments along Hinesburg Road: 1) at the intersection of Huntington Road and 2) south of Mansfield Way on a curve segment shown in the figure below.

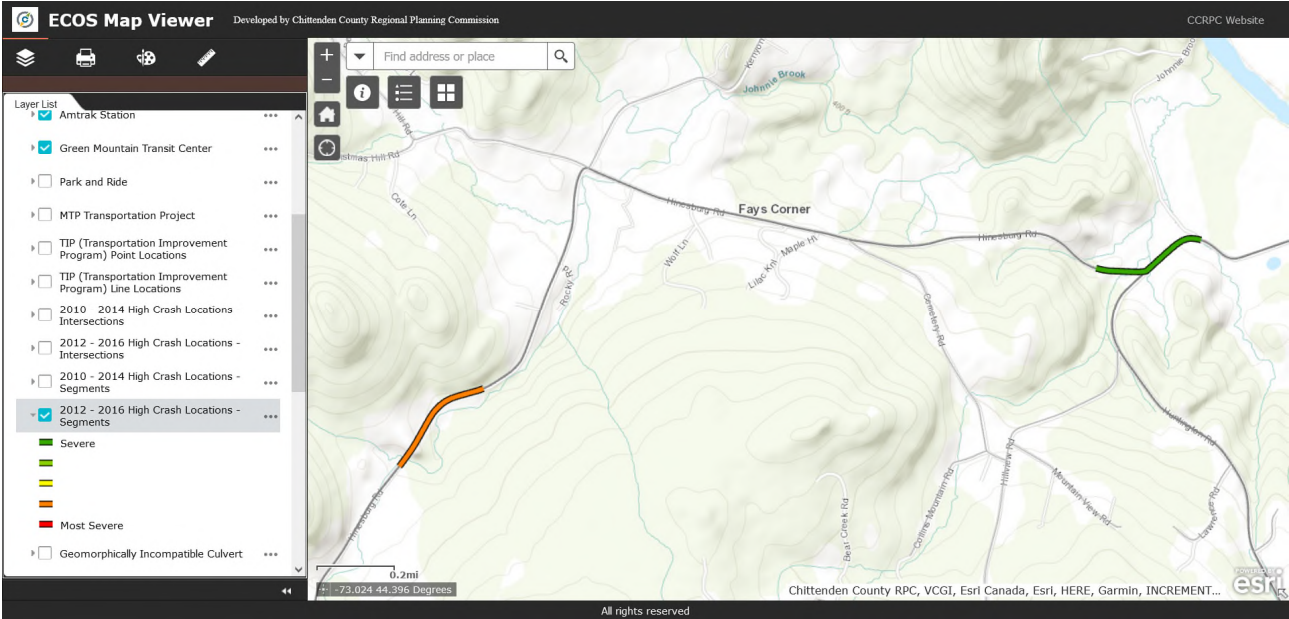


Figure 2: High Crash Segments along Hinesburg Road

Speed Data

Traffic volume and speed data (attached in the Appendix) were collected using an ATR on Hinesburg Road from 06/09/2021 to 06/17/2021. Table 1 below shows a summary of speed data for Hinesburg Road.

Table 1: Speed Data on Hinesburg Road

Speed Data	Eastbound	Westbound	Combined
Average Speed	44 mph	45 mph	44 mph
10 mph Pace Speed	40-49 mph	41-50 mph	41-50 mph
85 th Percentile Speed	53 mph	53 mph	53 mph

The 85th percentile speed for the eastbound and westbound directions was consistent at 53 mph, and therefore the combined 85th percentile speed associated with the traffic counts was 53 mph. The posted

speed limit is 45 mph. This indicates that a majority (85 percent) of drivers are driving at or below 53 mph (8 mph over the posted speed limit) along Hinesburg Road.

Huntington Road

Huntington Road is a paved road classified by the state as a Class II Town Highway and functionally classified as a Major Collector. The study area for this road extends from the intersection of Hinesburg Road to the Huntington Townline. The CCRPC staff installed an Automatic Traffic Recorder (ATR) along Huntington Road at the location shown in Figure 3 to collect traffic volume and speed data. Data were collected between July 14, 2021 and July 21, 2021. Figure 3 shows the study area and ATR location.

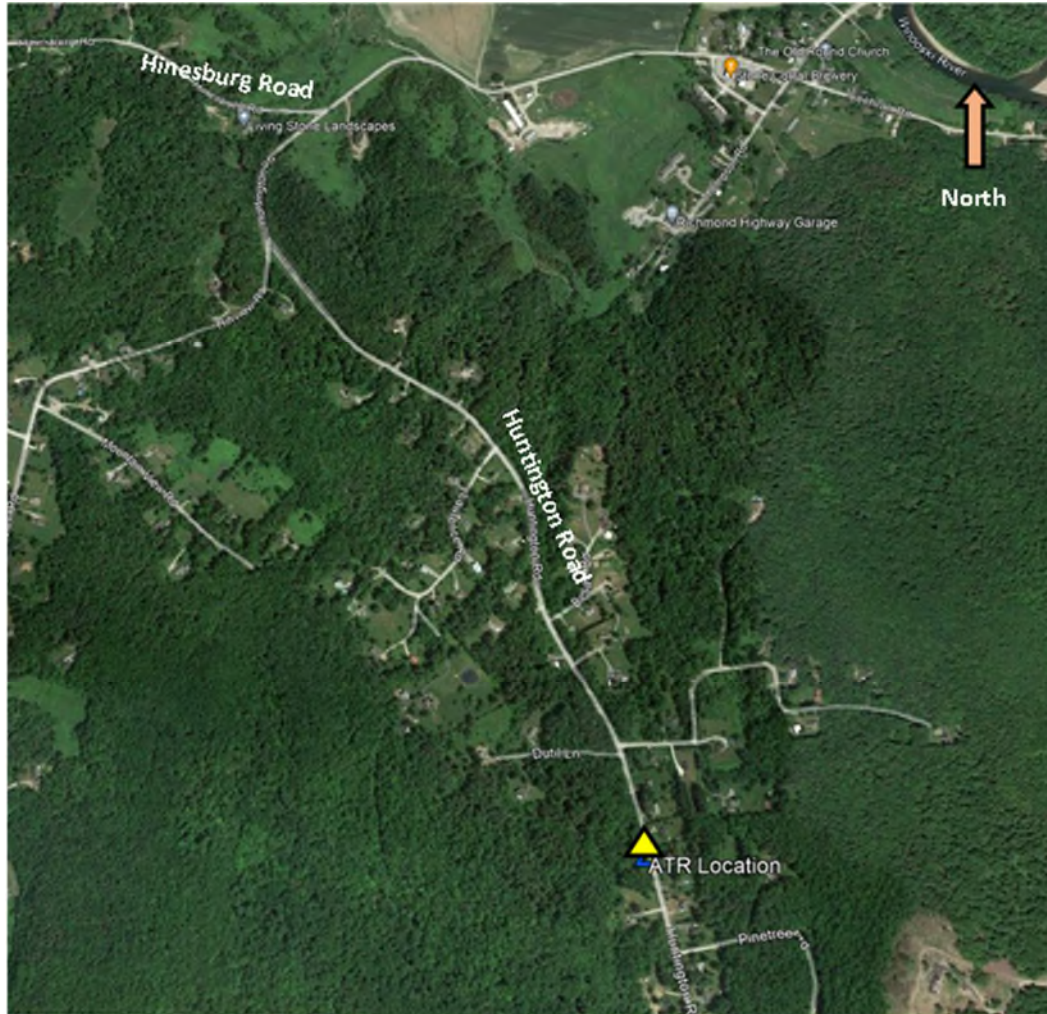


Figure 3: Huntington Road and ATR Location

Windshield Survey

A windshield reconnaissance survey was conducted in both travel directions along the study area by the team to identify safety related issues, roadway characteristics and roadside safety hazards. The following is a list of findings from the survey:

1. The study area of the road section is paved, and the roadway width varies between 24 and 30 ft.
2. Very narrow asphalt/grass shoulders exist on both sides of travel lanes.
3. Shoulders are not marked along the road.

4. The posted speed limit is 40 mph between Hinesburg Road and Besaw Rd., and 45 mph between Besaw Rd. and the Townline.
5. As per the observed posted speed limit signs, the speed limit is not consistent for northbound and southbound traffic between Besaw Rd., and Dutil Ln. In other words, for about 1,000 feet, the southbound speed limit is 45 mph while the northbound speed limit is 40 mph.
6. Chevron signs along Huntington Road at the lower Hillview Road curve are too short and provide inadequate visibility, especially for northbound motorists.
7. Some driveways are obscured due to vegetation at some locations along the study area.
8. Mailboxes are located near the edge of pavement in some locations along the road.

Crash History

There were 34 crashes reported in the last five years along Huntington Road. A crash report summary is attached in Appendix. Most of the crashes were reported as a single vehicle crash and property damage only. The most common contributing circumstances for crashes were reported as failure to keep in proper lane and driving too fast for conditions. There were 12 injury crashes and two fatal (on 03/11/2019 at approximately 3912 Huntington Road, and 07/22/21 at approximately 1153 Huntington Road) in the last five years along Huntington Road. The investigation officers for both fatal crashes determined that alcohol or drug impairment and driving under influence, speed and lack of control appear to be contributing factors for the crashes. There are two high crash segments along Huntington Road: 1) a segment north of the Dugway Road intersection, and 2) north of the Huntington Town line shown in the figure below.

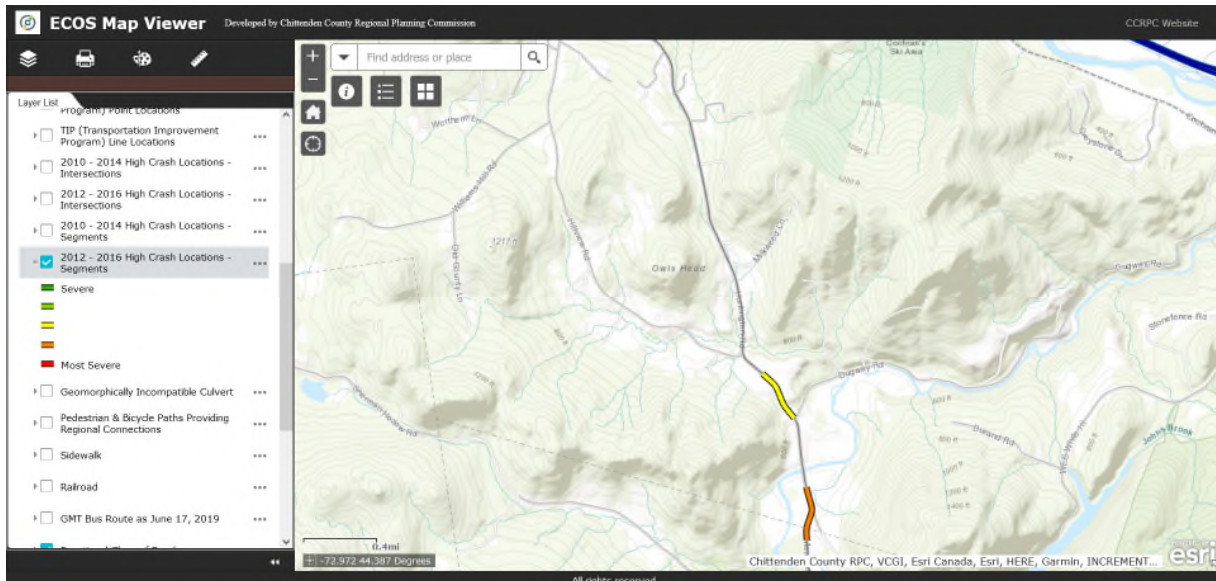


Figure 4: High Crash Segments along Huntington Road

Speed Data

Traffic volume and speed data (attached in the Appendix) were collected using an ATR on Huntington Road from 07/14/2021 to 07/21/2021. Table 2 shows a summary of speed data for Huntington Road.

Table 2: Speed Data on Huntington Road

Speed Data	Northbound	Southbound	Combined
Average Speed	45 mph	48 mph	46 mph
10 mph Pace Speed	40 - 49 mph	45 - 54 mph	40 - 49 mph
85 th Percentile Speed	49 mph	52 mph	51 mph

The 85th percentile speed for the northbound and southbound directions was observed as 49 mph and 52 mph, respectively, and the combined 85th percentile speed was observed as 51 mph, whereas the posted speed limit in the study area is 45 mph. This indicates that 85 percent of drivers are comfortable driving at speeds at or below 51 mph (6 mph over the posted speed limit) along Huntington Road.

Curve Safety Assessment

A curve safety assessment was conducted on December 14, 2021, to determine advisory speed to travel horizontal curves at three locations along Huntington Road; Hillview Road, Dugway Road and Mayo Road, using a slope meter (ball-bank indicator). The following figure shows the study horizontal curves on Huntington Road.



Figure 5: Horizontal Curves along Huntington Road

Ball-bank indicator field testing is the most common and feasible method of determining a safe traveling speed at which a curve may be negotiated under average vehicle operation, roadway geometry, road surface and environmental conditions. During field testing, a ball-bank indicator was mounted on dashboard of the test vehicle and deflection angle of the solid ball in the device is recorded at different speeds along the three study curves in both travel directions to determine the safe traveling speed. Test runs were conducted maintaining 45, 40, and 35 mph traveling speed along the three horizontal curves and corresponding ball-bank indicator readings were recorded. The following Table 3 shows the ball-bank readings at the three horizontal curves at different operating speeds.

Table 3: Ball-Bank Readings at Three Horizontal Curves on Huntington Road

Curve No.	Existing Advisory Speed (mph)	Driving Direction	Recorded Ball Bank Reading									
			Speed (mph)									
			15	20	25	30	35	40	45	50	55	60
at Mayo Rd.	None	Northbound					12	16	20			
	None	Southbound					9	13	16			
at Dugway Rd.	None	Northbound					8	9	13			
	None	Southbound					7	8	11			
at Hillview Rd.	None	Northbound					12	15	20			
	None	Southbound					12	13	19			

The Manual on Uniform Traffic Control Devices (MUTCD) for streets and highways defines the standards and provides guidance to governing bodies, municipalities, road managers to install and maintain traffic control devices on all public roads, local streets, bikeways, and private roads open to public travel. Section 2C.08 of the MUTCD provides standards and guidance for installing an advisory speed plaque that can be used to supplement any warning sign to indicate the advisory speed for a condition. Table 4 shows the maximum ball-bank reading to be used for determining safe traveling speed for curves, as provided in Section 2C.08.

Table 4: Maximum Ball-Bank Readings

Speed Range	Maximum Ball-Bank Reading
<= 20 mph	16 ^o
25 – 30 mph	14 ^o
>= 35 mph	12 ^o

It is evident from the observed ball-banking readings that motorists are highly likely to experience discomfort while navigating these three curves along Huntington Road when traveling at or above 35 mph. Motorists may experience further discomfort and high potential of swaying away from travel lane in severe weather conditions such as in rain and snow conditions while navigating the three curves.

Kenyon Road

Kenyon Road is an unpaved road classified by the state as a Class III Town Highway and functionally classified as a Local Road. The study area for this road extends from the intersection of US Route 2 to the intersection of Hinesburg Road. The CCRPC staff installed an Automatic Traffic Recorder (ATR) on Kenyon Road at the location shown in Figure 5 to collect traffic volume and speed data. Data were collected between June 17, 2021 and June 22, 2021. Figure 5 shows the study area and ATR location.

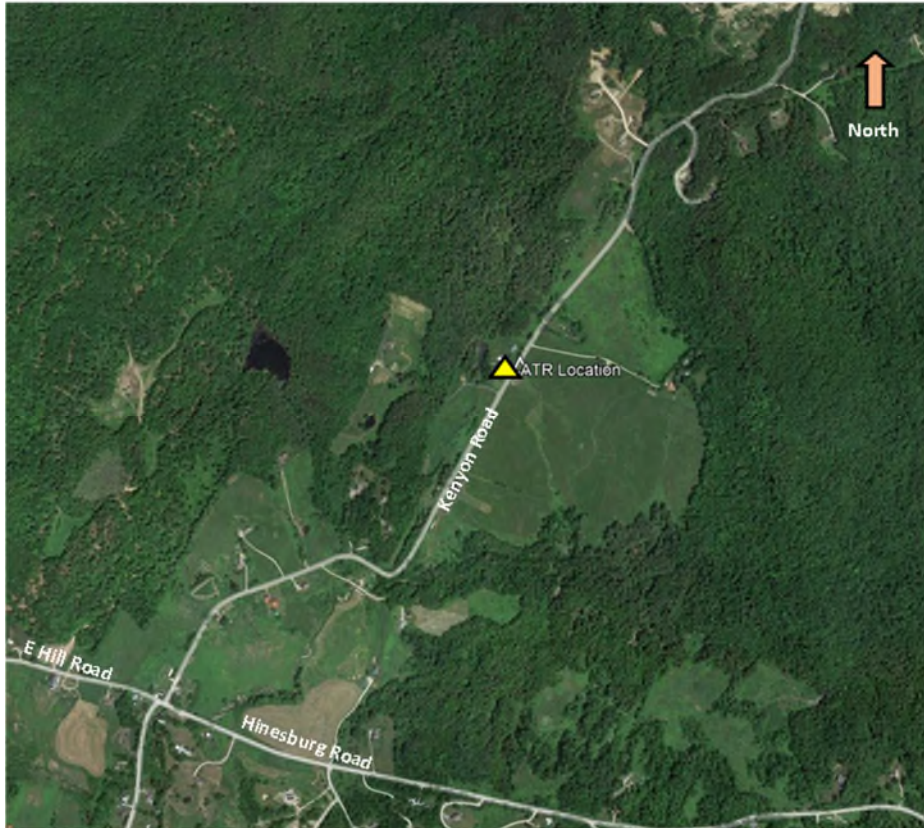


Figure 6: Kenyon Road and ATR Location

Windshield Survey

A windshield reconnaissance survey was conducted in both travel directions along the road by the team to identify safety related issues, roadway characteristics and roadside safety hazards. The following is a list of findings from the survey:

1. The road surface is unpaved with its width varying between 20 and 24 ft.
2. Very narrow native gravel/grass shoulders exist on both sides of travel lanes.
3. The northern segment of road from US Route 2 to Sylvan Knoll Road is posted at 25 mph and the remaining segment to the intersection of Hinesburg is posted at 35 mph.
4. Sharp curve warning signs with advisory speed signs are installed along curved segments of the road.

Crash History

There were 18 crashes reported in the last five years along Kenyon Road. A crash report summary is attached in Appendix. Most of the crashes were reported as single vehicle crashes and property damage only. Most common contributing circumstances for crashes were reported as failure to keep in proper lane and driving too fast for conditions.

Speed Data

Traffic volume and speed data (attached in the Appendix) were collected using an ATR on Kenyon Road from 06/17/2021 to 06/22/2021. Table 5 shows a summary of speed data for Kenyon Road.

Table 5: Speed Data on Kenyon Road

Speed Data	Northbound	Southbound	Combined
Average Speed	33 mph	32 mph	32 mph
10 mph Pace Speed	28 - 37 mph	27 - 36 mph	27 - 36 mph
85 th Percentile Speed	40 mph	40 mph	40 mph

The 85th percentile speed for both the northbound and southbound direction was observed as 40 mph and the combined 85th percentile speed was also observed as 40 mph. This indicates that 85 percent of drivers are comfortable driving at speeds of 40 mph or less (5 mph over the posted speed limit) along Kenyon Road.

3. Speed Data Analysis

A widely used metric in setting speed limits is the 85th percentile speed. This is defined as the speed in which 85% of motorists are traveling at or below. Based on the best available evidence and previous research, speed limits set using the 85th percentile speed data are not only acceptable by the majority of motorists, but also fall within the speed range where crash risk is lowest¹. The Manual on Uniform Traffic Control Devices (MUTCD), which is adopted as the standard for all traffic control devices in Vermont (Title 23 V.S.A. Section 1025), recommends setting speed limits within 5 mph of the 85th percentile speed while taking into consideration other factors such as roadway characteristics, shoulder condition, grade, the 10 mph pace speed, land uses, development setbacks, parking, crash history, and bicycle/pedestrian activity.

A research study in Kansas found that a majority of motorists driving on gravel roads tend to judge their speed based on a variety of conditions, including road surface and width, weather, sight distance etc., instead of strictly complying with posted speed limits². As per the Federal Highway Administration (FHWA) safety office, *“speeding issues on gravel roads will be best addressed through the use of a combination of engineering, enforcement and education countermeasures.”*

4. Pedestrian Activity and Other Factors

As mentioned above, other factors should be considered in determining a safe and reasonable speed limit. Based on research work in other states, the prevailing speeds may be reduced by 5 percent when the total pedestrian traffic exceeds 10 people per hour for any three hours within any eight-hour period. Pedestrian volume data are not available for the study areas. However, anecdotal information from general field observation indicates that pedestrian volume in the study areas is unlikely to exceed 10 people per hour for any three hours in a day.

5. Findings and Recommendations

In general, the Town should consider implementing site specific traffic calming measures such as radar speed feedback signs, dynamic pavement striping, gateway treatments etc., with a combination of countermeasures such as public outreach and education, safety awareness campaign and increasing enforcement targeted at changing driver behavior who are driving 10 mph above the speed limit on town highways.

¹ Synthesis of Speed Zoning Practice, FHWA-RD-85-096, Technical Summary.

² https://safety.fhwa.dot.gov/local_rural/training/fhwasa010413spmgmt/speedmanagementguide.pdf

Hinesburg Road

Hinesburg Road is paved and exhibits narrow shoulders with steep embankments along the edge of pavement at some locations. As per the observed bidirectional 85th percentile speed data, the majority of drivers are traveling at or below 53 mph on Hinesburg Road within the study area.

Despite the observed 85th percentile speeds, when considering the roadway characteristics and lack of shoulders and steep embankment slopes, rural residential land use, and high number of crashes with high crash segments, **it is recommended to lower the speed limit to 40 mph on Hinesburg Road from the intersection of Huntington Road to approximately 0.5 miles south of Mansfield Way.** It is also recommended to strip an edge line along Hinesburg Road maintaining at least 10 ft travel lane width in both directions.

Huntington Road

Huntington Road is paved and exhibits narrow shoulders with steep embankments along the edge of the roadway at certain locations within the study area. As per the observed bidirectional 85th percentile speed data, a majority of drivers are traveling at or below 52 mph on Huntington Road.

Despite the observed 85th percentile speeds, when considering roadway characteristics and lack of shoulders and steep embankment slopes, rural residential land use, and high number of crashes with high crash segments, **it is recommended to extend the 40 mph speed limit zone southward to approximately 0.3 miles north of the Dugway Road intersection.**

The following are additional recommendations based on field observations and ball-banking data analysis:

- Install curve sign supplemented with 35 mph advisory speed plaque along curves in both directions on Huntington Road at Mayo Road and Dugway Road locations. (see Figure 5 for location reference)
- Install an additional chevron sign along the east side of the curve section at Mayo Road.
- Increase the height of chevron signs along the curve section at lower Hillview Road so that the bottom of the signs are 5 ft above the edge of pavement.
- Install a fog line/edge line maintaining at least 10 ft travel lane width in both directions.

Kenyon Road

Kenyon Road is an unpaved road with narrow shoulders. Generally, most motorists tend to drive at speeds lower than the posted speed limit on unpaved/gravel roads. Therefore, the Vermont Agency of Transportation (VTrans) does not recommend setting speed limits for Class III unpaved roads³.

Warning chevron signs and advisory speed signs were installed at appropriate locations along the road. By clearing or trimming vegetation along narrow curves and in the vicinity of driveway approaches, sight distance and safety for all users will be improved.

With the observed 85th percentile speeds and considering the roadway characteristics and narrow shoulders, rural residential land use, and lack of significant pedestrian and bicycle activities, **it is recommended to maintain the existing speed limits on Kenyon Road.**

³<https://localroads.vermont.gov/sites/localroads/files/files/resources/materials/SettingSpeedLimitsGuideUpdateAugust2016.pdf>

Table 6: Technical Summary

Municipality:	Town of Richmond
Road Name:	Hinesburg Road, Huntington Road and Kenyon Road
Recommended Speed Limit:	<ul style="list-style-type: none"> • 40 mph for Hinesburg Rd. between Huntington Road and 0.5 miles south of Mansfield Way • Extend 40 mph zone on Huntington Road southward approximately 0.3 miles north of the Dugway Road intersection • Maintain 35 mph for Kenyon Road
Evaluation By:	Sai Sarepalli, P.E. Senior Transportation Planning Engineer
Final Report Document Date:	02/07/2022

85th Percentile Speed (mph):	Hinesburg Road: EB – 53 mph; WB – 53 mph Huntington Road: NB – 49 mph; SB – 52 mph Kenyon Road: NB – 40 mph; SB – 40 mph
10 mph Pace Speed (mph) & Percentage in the range	Hinesburg Road: EB (40-49mph, 64%); WB (41-50 mph, 67%) Huntington Road: NB (40-49mph, 74%); SB (45-54mph, 65%) Kenyon Road: NB (28-37mph, 64%); SB (27-36 mph, 69%)
Safety problem related to speed:	<ul style="list-style-type: none"> • Motorists driving at excessive speeds along curves can pose safety hazard. • Driveways obscured due to vegetation can pose safety hazard for drivers.
Average Daily Traffic (Vehicles per Day)	Hinesburg Road: 2,000 Huntington Road: 2,485 Kenyon Road: 750
Town Highway and Functional Classification for both roads	Hinesburg Road: Class II and Major Collector Huntington Road: Class II and Major Collector Kenyon Road: Class III and Local Road
Road Surface	Hinesburg Rd and Huntington Rd: Paved/Asphalt Kenyon Road: Unpaved/Gravel
Road Width	Varies between 18 and 20 ft. No Pavement Markings
Shoulder Surface	Hinesburg Rd and Huntington Rd: Asphalt/Gravel Kenyon Road: Grass/Gravel
Shoulder Width	Hinesburg Rd and Huntington Rd: 0.5 ft to 2 ft Kenyon Road: 0 ft to 1 ft
Parking	No Parking on all study roads
Pedestrian/Bicycles	No marked bike lanes on all study roads
Adjacent Land use	Rural Residential

Appendix

Crash Data

Hinesburg Road
Crash Data
01/01/2016 - 08/31/2021

Route	Reporting Agency/Incident No.	City/Town	Route	Mile Marker	Crash Date	Time	Weather	Contributing Circumstances	Direction Of Collision	Number of Injuries	Number of Fatalities	Number of Untimely Deaths	Direction	Crash Severity
FAS 0209	VT0040800/17RM01154	Richmond	Hinesburg Rd	0.4	11/11/2017	1:53 PM	Clear	No improper driving	Single Vehicle Crash	0	0	0	N	None
FAS 0209	VT0040800/17RM00111	Richmond	Hinesburg Rd	0.57	2/3/2017	8:24 PM	Snow	Driving too fast for conditions- Not Distracted	Single Vehicle Crash	0	0	0	S	None
FAS 0209	VT0040800/16RM01231	Richmond	Hinesburg Rd	1.03	11/19/2016	10:29 AM	Clear	Driving too fast for conditions- Other Inside Vehicle	Single Vehicle Crash	1	0	0	S	Suspected Minor
FAS 0209	VT0040800/16RM00228	Richmond	Hinesburg Rd	1.6	3/7/2016	10:34 AM	Snow	Driving too fast for conditions	Single Vehicle Crash	0	0	0	S	None
FAS 0209	VT0040800/17RM00228	Richmond	Hinesburg Rd	1.72	3/9/2017	7:00 AM	Snow	Driving too fast for conditions	Single Vehicle Crash	0	0	0	N	None
FAS 0209	VT0040800/19RM00402	Richmond	Hinesburg Rd	1.72	6/17/2019	7:35 AM	[No Weather]		[No Direction of Collision]	0	0	0	N	None
FAS 0209	VT0040800/17RM00271	Richmond	Hinesburg Rd	2	3/22/2017	11:28 AM	Cloudy	Driving too fast for conditions	Single Vehicle Crash	0	0	0	N	None
FAS 0209	VT0040800/16RM00555	Richmond	Hinesburg Rd	2.3	5/29/2016	3:50 PM	Rain	Under the influence of medication/drugs/alcohol	Single Vehicle Crash	0	0	0	E	None
FAS 0209	VT0040800/20RM00035	Richmond	Hinesburg Rd	2.41	1/19/2020	7:40 PM	[No Weather]		[No Direction of Collision]	0	0	0		[No Data]
FAS 0209	VTVSP0100/18A102971	Richmond	Hinesburg Rd	2.53	6/29/2018	8:11 PM	Clear		Single Vehicle Crash	0	0	0	W	None
FAS 0209	VTVSP0100/21A102454	Richmond	Hinesburg Rd	2.69	7/2/2021	5:45 AM	Rain	Fatigued- asleep	Single Vehicle Crash	0	0	0	W	None
FAS 0209	VT0040800/16RM01257	Richmond	Hinesburg Rd	3.28	11/24/2016	11:15 AM	Snow	Driving too fast for conditions	Single Vehicle Crash	0	0	0	E	None
FAS 0209	VT0040800/18RM00816	Richmond	Hinesburg Rd	3.6	8/28/2018	7:18 AM	Clear	Inattention	Single Vehicle Crash	0	0	0	W	None
FAS 0209	VT0040800/21RM00095	Richmond	Hinesburg Rd	3.65	3/29/2021	4:02 PM	Clear	Followed too closely- Operating vehicle in erratic- reckless	Rear End	0	0	0	E	None
FAS 0209	VT0040800/17RM01230	Richmond	Hinesburg Rd	3.8	12/4/2017	2:53 PM	Clear	Other improper action- No improper driving	Other - Explain in Narrative	0	0	0	W- E	None
FAS 0209	VT0040800/19RM00577	Richmond	Hinesburg Rd	3.9	8/23/2019	11:05 AM	[No Weather]		[No Direction of Collision]	0	0	0	W	None
FAS 0209	VT0040800/17RM00765	Richmond	Hinesburg Rd	3.91	7/26/2017	12:35 PM	Clear	Unknown	Single Vehicle Crash	0	0	0	S	None
FAS 0209	VT0041000/19RM00786	Richmond	Hinesburg Rd	3.92	11/11/2019	6:49 PM	[No Weather]		[No Direction of Collision]	0	0	0	E- W	None
FAS 0209	VT0040800/17RM00171	Richmond	Hinesburg Rd	3.94	2/20/2017	9:22 AM	Clear	No improper driving	Single Vehicle Crash	0	0	0	S	None
FAS 0209	VT0040800/16RM01302	Richmond	Hinesburg Rd	3.99	12/8/2016	10:17 AM	Cloudy	Under the influence of medication/drugs/alcohol- Driving	Single Vehicle Crash	0	0	0	S	None
FAS 0209	VTVSP0100/20A100230	Richmond	Hinesburg Rd	4.16	1/16/2020	7:40 AM	Snow	Driving too fast for conditions- No improper driving	Opp Direction Sideswipe	0	0	0	S- N	None
FAS 0209	VT0040800/17RM00938	Richmond	Hinesburg Rd	4.17	9/25/2017	7:45 PM	Clear	Exceeded authorized speed limit- Operating vehicle in err	Single Vehicle Crash	1	0	0	W	Suspected Serious
FAS 0209	VT0040800/18RM01050	Richmond	Hinesburg Rd	4.27	11/20/2018	4:14 AM	Snow	No improper driving	Single Vehicle Crash	0	0	0	W	None
FAS 0209	VT0040800/16RM01307	Richmond	Hinesburg Rd	4.37	12/9/2016	6:52 PM	Snow	No improper driving- Not Distracted	Single Vehicle Crash	0	0	0	E	None
FAS 0209	VT0040800/19RM00230	Richmond	Hinesburg Rd	4.46	3/27/2019	7:44 AM	Clear	Followed too closely- No improper driving	Rear End	0	0	0	E	None
FAS 0209	VT0040800/17RM00027	Richmond	Hinesburg Rd	4.51	1/8/2017	2:25 AM	Clear	Under the influence of medication/drugs/alcohol	Single Vehicle Crash	0	0	0	S	None
FAS 0209	VT0040800/20RM00080	Richmond	Hinesburg Rd	4.58	2/12/2020	2:12 PM	Clear	Failed to yield right of way- No improper driving	Left Turn and Thru- Angle Broadside -->v--	1	0	0	W- N	Possible
FAS 0209	VT0040800/16RM01077	Richmond	Hinesburg Rd	4.6	9/30/2016	5:27 PM	Cloudy	Disregarded traffic signs- signals- markings- Not Distracted	Opp Direction Sideswipe	0	0	0	N- S	None
FAS 0209	VT0040800/18RM00216	Richmond	Hinesburg Rd	4.87	3/8/2018	8:41 AM	Snow	Disregarded traffic signs- signals- markings	Single Vehicle Crash	0	0	0	S	None
FAS 0209	VT0040800/19RM00382	Richmond	Hinesburg Rd	4.93	6/3/2019	11:11 AM	[No Weather]		[No Direction of Collision]	0	0	0		[No Data]
FAS 0209	VT0040800/19RM00611	Richmond	Hinesburg Rd	4.93	9/4/2019	4:19 PM	[No Weather]		[No Direction of Collision]	0	0	0		[No Data]
FAS 0209	VT0040800/19RM00687	Richmond	Hinesburg Rd	4.97	10/3/2019	7:24 PM	Rain	No improper driving- Not Distracted	Single Vehicle Crash	0	1	0	N	Fatality
FAS 0209	VT0040800/19RM00569	Richmond	Hinesburg Rd	5.02	8/19/2019	1:03 PM	[No Weather]		[No Direction of Collision]	0	0	0	S	None
FAS 0209	VT0040800/17RM01137	Richmond	Hinesburg Rd	5.08	11/7/2017	7:28 AM	Clear	Followed too closely	Rear End	1	0	0	N	Suspected Minor
FAS 0209	VT0040800/17RM00947	Richmond	Hinesburg Rd	5.09	9/14/2017	3:30 PM	Cloudy	Inattention- No improper driving	Other - Explain in Narrative	0	0	0	S- W	None
FAS 0209	VT0040800/20RM00580	Richmond	Hinesburg Rd	5.13	12/16/2020	4:35 PM	Clear	Inattention	Rear-to-rear	0	0	0	E- P	None
FAS 0209	VT0040800/17RM00327	Richmond	Hinesburg Rd	5.14	4/7/2017	11:23 AM	Other - Ex	Failed to yield right of way- No improper driving	Left Turn and Thru- Angle Broadside -->v--	0	0	0	N- S	None
FAS 0209	VT0040800/18RM00468	Richmond	Hinesburg Rd	5.15	5/15/2018	8:41 AM	Rain	Inattention- No improper driving	No Turns- Thru moves only- Broadside ^<	0	0	0	E	None
FAS 0209	VT0040800/16RM00615	Richmond	Hinesburg Rd	5.8	6/13/2016	11:07 AM	Clear	Failure to keep in proper lane	Single Vehicle Crash	0	0	0	S	None
FAS 0209	VT0040800/21RM00027	Richmond	Hinesburg Rd	5.82	1/21/2021	3:40 PM	Snow	Failure to keep in proper lane- No improper driving	Opp Direction Sideswipe	0	0	0	W- E	None
FAS 0209	VT0040800/17RM00168	Richmond	Hinesburg Rd	6.44	2/17/2017	8:15 AM	Cloudy	Driving too fast for conditions	Single Vehicle Crash	0	0	0	N	None
FAS 0209	VT0040800/19RM00131	Richmond	Hinesburg Rd	6.44	2/10/2019	8:19 PM	Clear	No improper driving	Same Direction Sideswipe	0	0	0	S	None
FAS 0209	VT0040800/18RM00299	Richmond	Hinesburg Rd	6.91	3/28/2018	5:21 PM	Clear	No improper driving- Followed too closely- Not Distracted	Rear End	0	0	0	S	None
FAS 0209	VT0040800/18RM00555	Richmond	Hinesburg Rd	7.29	6/5/2018	8:01 AM	Cloudy	Followed too closely	Rear End	0	0	0	N	None
FAS 0209	VT0040800/16RM01101	Richmond	Hinesburg Rd	7.42	10/7/2016	7:13 AM	Clear	Failure to keep in proper lane- Inattention	Single Vehicle Crash	0	0	0	N	None
FAS 0209	VT0040800/19RM00771	Richmond	Hinesburg Rd	999.99	11/7/2019	3:17 PM	[No Weather]		[No Direction of Collision]	0	0	0		[No Data]

Huntington Road

Crash Data

01/01/2016 - 08/31/2021

Route	Reporting Agency/Incident No.	City/Town	Route	Mile Marker	Crash Date	Time	Weather	Contributing Circumstances	Direction Of Collision	Number of Injuries	Number of Fatalities	Number of Untimely Deaths	Direction	Crash Severity
FAS 0211	VT0040800/17RM00557	Richmond	Huntington Rd	0.18	6/12/2017	4:50 PM	Clear	Exceeded authorized speed limit	Single Vehicle Crash	0	0	0	N	None
FAS 0211	VT0040800/17RM000951	Richmond	Huntington Rd	0.18	9/16/2017	2:09 PM	Clear	Inattention	Single Vehicle Crash	1	0	0	N	Suspected Minor
FAS 0211	VT0040800/18RM00954	Richmond	Huntington Rd	0.18	10/19/2018	12:37 PM	Clear	Driving too fast for conditions	Single Vehicle Crash	0	0	0	N	None
FAS 0211	VT0040800/19RM00193	Richmond	Huntington Rd	0.18	3/11/2019	6:21 PM	Cloudy	Exceeded authorized speed limit- Operating vehicle in erratic- reckless- careless	Single Vehicle Crash	0	1	0	S	Fatality
FAS 0211	VT0040800/17RM01236	Richmond	Huntington Rd	0.34	12/7/2017	2:21 PM	Clear	Unknown	Single Vehicle Crash	1	0	0	S	Possible
FAS 0211	VT0040800/17RM00471	Richmond	Huntington Rd	0.43	5/19/2017	5:45 AM	Clear	Failure to keep in proper lane	Single Vehicle Crash	0	0	0	N	None
FAS 0211	VTVSP0100/21A103205	Richmond	Huntington Rd	0.59	8/29/2021	11:06 PM	Clear	No improper driving- Fatigued- asleep	Head On	0	0	0	S	Unknown
FAS 0211	VT0040800/18RM01073	Richmond	Huntington Rd	0.61	11/27/2018	8:29 AM	Snow	Driving too fast for conditions	Single Vehicle Crash	0	0	0	W	None
FAS 0211	VT0040800/18RM00488	Richmond	Huntington Rd	0.64	5/19/2018	11:58 AM	Cloudy	Other improper action- Followed too closely	Rear End	0	0	0	S	None
FAS 0211	VTVSP0100/18A104867	Richmond	Huntington Rd	0.69	10/28/2018	8:12 PM	Clear	Driving too fast for conditions	[No Direction of Collision]	0	0	0	S	None
FAS 0211	VT0040800/16RM00434	Richmond	Huntington Rd	0.73	4/29/2016	7:28 PM	Clear	No improper driving	Single Vehicle Crash	0	0	0	S	None
FAS 0211	VT0040800/17RM01228	Richmond	Huntington Rd	0.73	12/4/2017	7:47 AM	Clear	Driving too fast for conditions	Single Vehicle Crash	0	0	0	N	None
FAS 0211	VT0040800/16RM00215	Richmond	Huntington Rd	0.82	3/2/2016	4:01 PM	Cloudy	Failure to keep in proper lane- Other Inside Vehicle	Single Vehicle Crash	0	0	0	N	None
FAS 0211	VT0040800/19RM00377	Richmond	Huntington Rd	0.83	5/30/2019	4:27 PM	[No Weather]		[No Direction of Collision]	0	0	0	S	None
FAS 0211	VT0040800/19RM00549	Richmond	Huntington Rd	1.2	8/9/2019	11:35 AM	Clear	Other Activity- Electronic Device	Single Vehicle Crash	0	0	0	S	None
FAS 0211	VT0040800/16RM00867	Richmond	Huntington Rd	1.4	8/6/2016	8:02 AM	Clear	Fatigued- asleep	Single Vehicle Crash	1	0	0	S	Suspected Minor
FAS 0211	VT0040800/20RM00031	Richmond	Huntington Rd	1.46	1/17/2020	6:50 PM	Clear	No improper driving	Single Vehicle Crash	0	0	0	N	[No Data]
FAS 0211	VT0040800/16RM00204	Richmond	Huntington Rd	1.8	2/27/2016	2:58 AM	Cloudy	Under the influence of medication/drugs/alcohol- Operating vehicle in erratic- r	Single Vehicle Crash	1	0	0	S	Suspected Minor
FAS 0211	VT0040800/17RM00944	Richmond	Huntington Rd	2.19	9/14/2017	5:37 AM	Cloudy	Failure to keep in proper lane	Single Vehicle Crash	0	0	0	N	None
FAS 0211	VTVSP0100/18A203989	Richmond	Huntington Rd	2.31	8/11/2018	7:43 PM	Cloudy	Failure to keep in proper lane	Single Vehicle Crash	1	0	0	N	Possible
FAS 0211	VT0040800/17RM00659	Richmond	Huntington Rd	2.51	7/2/2017	9:36 AM	Cloudy	Under the influence of medication/drugs/alcohol	Single Vehicle Crash	1	0	0	S	Suspected Minor
FAS 0211	VT0040800/17RM00123	Richmond	Huntington Rd	2.59	2/7/2017	8:12 AM	Snow	Driving too fast for conditions	Single Vehicle Crash	0	0	0	S	None
FAS 0211	VT0040800/19RM00221	Richmond	Huntington Rd	2.61	3/22/2019	11:10 AM	Snow	Driving too fast for conditions- No improper driving	Head On	2	0	0	N- S	Suspected Serious
FAS 0211	VT0040800/19RM00849	Richmond	Huntington Rd	2.61	12/7/2019	10:34 AM	[No Weather]		[No Direction of Collision]	0	0	0	N- S	None
FAS 0211	VT0040800/18RM00113	Richmond	Huntington Rd	2.74	2/3/2018	3:27 AM	Cloudy	Under the influence of medication/drugs/alcohol- Not Distracted	Single Vehicle Crash	1	0	0	S	Suspected Serious
FAS 0211	VT0040800/17RM00013	Richmond	Huntington Rd	2.81	1/4/2017	6:20 AM	Snow		Single Vehicle Crash	0	0	0	S	None
FAS 0211	VT0040800/18RM00449	Richmond	Huntington Rd	2.87	5/9/2018	8:35 AM	Clear	Fatigued- asleep- Failure to keep in proper lane- No improper driving	Head On	3	0	0	S- N	Suspected Serious
FAS 0211	VT0040800/18RM00347	Richmond	Huntington Rd	2.91	4/12/2018	5:21 PM	Rain	No improper driving	Opp Direction Sideswipe	0	0	0	N- S	None
FAS 0211	VTVSP0100/21A102730	Richmond	Huntington Rd	3	7/22/2021	12:17 AM	Not Report	Exceeded authorized speed limit- Operating vehicle in erratic- reckless- careless	Single Vehicle Crash	0	1	0	S	Fatality
FAS 0211	VT0040800/18RM00859	Richmond	Huntington Rd	3.22	9/8/2018	3:07 PM	Clear	Driving too fast for conditions	Single Vehicle Crash	1	0	0	S	Possible
FAS 0211	VT0041000/19WT00486	Richmond	Huntington Rd	3.41	2/3/2019	8:27 PM	Sleet- Hail	Swerving or avoiding due to wind- slippery surface- vehicle- object- non-motoris	Head On	3	0	0	N- S	Suspected Minor
FAS 0211	VTVSP0100/19A100368	Richmond	Huntington Rd	3.47	1/21/2019	6:31 PM	Snow	Driving too fast for conditions- No improper driving	Other - Explain in Narrative	0	0	0	N- S	None
FAS 0211	VT0040800/19RM00093	Richmond	Huntington Rd	3.47	1/27/2019	4:51 PM	[No Weather]		[No Direction of Collision]	0	0	0		[No Data]
FAS 0211	VTVSP0100/20A100269	Richmond	Huntington Rd	3.47	1/17/2020	8:04 AM	Cloudy	Driving too fast for conditions- No improper driving	Rear End	0	0	0	S- N	None

Kenyon Road
Crash Data
01/01/2016 - 08/31/2021

Reporting Agency/Incident No.	Town	Route	Crash Date	Time	Weather	Contributing Circumstances	Direction of Collision	Number of Injuries	Number of Fatalities	Number of Untimely Deaths	Location	Injury Type
VT0040800/16RM00092	Richmond	T0008	1/29/2016	6:45 PM	Snow	Driving too fast for conditions	Single Vehicle Crash	0	0	0	Kenyon Road at Hinesburg Road	None
VT0040800/16RM00188	Richmond	T0008	2/23/2016	7:48 PM	Cloudy	No improper driving	Single Vehicle Crash	1	0	0	421 Kenyon Road at Turkey Hill Road	Possible
VT0040800/16RM00584	Richmond	T0008	6/3/2016	10:28 PM	Clear	Driving too fast for conditions	Single Vehicle Crash	1	0	0	1724 Kenyon Road at 1492 Kenyon Road	Possible
VT0040800/17RM01295	Richmond	T0008	12/21/2017	6:34 PM	Cloudy	No improper driving- Not Distracted	Single Vehicle Crash	0	0	0	Kenyon Road at Hinesburg Rd	None
VT0040800/18RM00068	Richmond	T0008	1/19/2018	7:50 AM	Cloudy	Failure to keep in proper lane	Single Vehicle Crash	0	0	0	1250 Kenyon Rd at Route 2	None
VT0040800/18RM00215	Richmond	T0008	3/8/2018	7:31 AM	Snow	Driving too fast for conditions- No improper driving	Opp Direction Sideswipe	1	0	0	1722 Kenyon Rd at Fays Corner	Suspected Minor
VT0040800/19RM00042	Richmond	T0008	1/11/2019	11:10 PM	Clear	Unknown	Single Vehicle Crash	0	0	0	932 Kenyon Rd at Sylvan Ridge Rd	[No Data]
VT0040800/19RM00528	Richmond	T0008	7/31/2019	3:00 PM	[No Weather]		[No Direction of Collision]	0	0	0	2300 KENYON ROAD at HINESBURG ROAD	None
VT0040800/19RM00548	Richmond	T0008	8/8/2019	5:15 PM	[No Weather]		[No Direction of Collision]	0	0	0	KENYON RD at	[No Data]
VT0040800/19RM00787	Richmond	T0008	11/12/2019	9:11 AM	[No Weather]		[No Direction of Collision]	0	0	0	725 KENYON ROAD at TURKEY HILL LA	None
VT0040800/19RM00842	Richmond	T0008	12/5/2019	7:44 PM	Snow	Driving too fast for conditions	Single Vehicle Crash	0	0	0	1724 Kenyon Rd at 1724 Kenyon Rd	None
VT0040800/19RM00843	Richmond	T0008	12/6/2019	4:03 PM	Snow	Driving too fast for conditions	Single Vehicle Crash	0	0	0	1722 Kenyon Road at Hinesburg Road	None
VT0040800/19RM00848	Richmond	T0008	12/7/2019	10:20 AM	[No Weather]		[No Direction of Collision]	0	0	0	777 KENYON ROAD at SYLVAN RIDGE	None
VT0040800/19RM00862	Richmond	T0008	12/13/2019	7:15 AM	[No Weather]		[No Direction of Collision]	1	0	0	1193 KENYON ROAD at BOX 1193	Possible
VT0040800/20RM00104	Richmond	T0008	2/28/2020	12:00 PM	Cloudy	Driving too fast for conditions- No improper driving	Opp Direction Sideswipe	0	0	0	Kenyon Road at Hinesburg Road	None
VTVSP0100/20A102163	Richmond	T0008	5/17/2020	9:25 AM	[No Weather]		[No Direction of Collision]	0	0	0	Kenyon Rd	[No Data]
VT0040800/20RM00217	Richmond	T0008	5/17/2020	8:49 AM	[No Weather]		[No Direction of Collision]	0	0	0	Kenyon Rd	[No Data]
VT0040800/20RM00367	Richmond	T0008	7/22/2020	12:56 PM	Cloudy	Driving too fast for conditions	Single Vehicle Crash	0	0	0	32 Turkey Hill Rd at Turkey Hill Rd	None

Speed Data

Chittenden County RPC

110 W Canal St
Winooski, VT 05404

Site Code: RICH20
 Station ID:
 Location 1: Hinesburg Rd, Richmond VT
 Location 2: Between Wild Apple Ln and Lilac Knoll
 Direction: East, A to B

File Name: RICH20
 Date Printed: 6/22/2021
 Start Date: 6/10/2021
 End Date: 6/15/2021

6/10/2021	> 15 - 20	> 20 - 25	> 25 - 30	> 30 - 35	> 35 - 40	> 40 - 45	> 45 - 50	> 50 - 55	> 55 - 60	> 60 - 65	> 65 - 70	> 70 MPH	Total
Time	0 - 15 MPH	MPH	MPH	MPH	MPH	MPH	MPH	MPH	MPH	MPH	MPH	MPH	
12:00 AM	0	0	0	0	0	0	0	1	0	0	0	0	1
1:00	0	0	0	0	0	0	1	0	0	0	1	0	2
2:00	0	0	0	0	0	1	0	0	0	0	0	0	1
3:00	0	0	0	0	0	1	0	1	0	0	0	0	2
4:00	0	0	0	0	1	1	0	2	1	1	0	0	6
5:00	0	0	1	0	0	3	4	1	3	0	0	0	12
6:00	0	1	1	0	0	1	5	4	6	3	0	0	21
7:00	1	0	1	0	5	5	23	23	10	2	1	0	71
8:00	1	0	1	0	1	4	14	25	7	1	2	0	56
9:00	0	2	0	1	0	8	13	21	7	0	0	0	52
10:00	0	0	1	0	0	5	20	24	5	1	0	0	56
11:00	0	1	1	0	2	5	17	18	9	1	0	0	54
12:00 PM	0	0	2	0	1	11	26	16	8	2	0	0	66
1:00	0	0	4	1	0	4	26	25	4	2	0	0	66
2:00	0	1	0	0	1	7	28	29	6	1	0	0	73
3:00	0	0	4	0	3	12	46	43	12	0	0	0	120
4:00	0	0	0	0	0	4	35	52	9	3	0	0	103
5:00	1	0	2	0	0	7	38	53	15	3	0	1	120
6:00	0	3	0	0	0	7	12	30	20	1	1	0	74
7:00	0	0	1	0	2	1	18	22	12	0	0	0	57
8:00	0	2	0	0	0	5	16	14	1	0	0	0	38
9:00	0	0	0	0	1	7	7	4	4	1	1	0	25
10:00	0	0	0	0	0	1	3	3	2	0	0	0	9
11:00	0	0	0	0	0	0	2	4	0	1	0	0	7
Total	3	10	19	2	17	100	354	415	141	23	6	1	1092

Chittenden County RPC

110 W Canal St
Winooski, VT 05404

Site Code: RICH20
 Station ID:
 Location 1: Hinesburg Rd, Richmond VT
 Location 2: Between Wild Apple Ln and Lilac Knoll
 Direction: East, A to B

File Name: RICH20
 Date Printed: 6/22/2021
 Start Date: 6/10/2021
 End Date: 6/15/2021

6/11/2021	> 15 - 20	> 20 - 25	> 25 - 30	> 30 - 35	> 35 - 40	> 40 - 45	> 45 - 50	> 50 - 55	> 55 - 60	> 60 - 65	> 65 - 70	> 70 MPH	Total
Time	0 - 15 MPH	MPH	MPH	MPH	MPH	MPH	MPH	MPH	MPH	MPH	MPH	MPH	
12:00 AM	0	0	0	0	0	1	0	1	0	0	0	0	2
1:00	0	0	0	0	0	0	0	0	0	0	0	0	0
2:00	0	0	0	0	0	0	0	0	0	0	0	0	0
3:00	0	0	0	0	0	0	0	0	0	0	0	0	0
4:00	0	0	0	0	0	2	0	1	1	0	0	0	4
5:00	0	0	0	0	0	1	2	5	3	1	0	0	12
6:00	0	0	1	0	0	0	3	4	4	0	0	0	12
7:00	1	0	2	0	1	14	25	29	6	1	0	1	81
8:00	0	2	0	0	0	4	14	12	10	6	0	0	48
9:00	0	0	0	2	0	6	24	22	11	0	0	0	65
10:00	1	1	0	0	0	2	10	12	3	1	0	0	30
11:00	1	0	0	0	0	12	15	26	6	1	0	0	61
12:00 PM	0	0	1	0	1	10	20	24	12	3	1	0	72
1:00	0	1	0	0	1	7	31	29	5	0	0	0	74
2:00	0	0	0	0	0	7	27	39	12	2	0	1	88
3:00	0	0	1	0	0	11	35	27	21	0	0	0	95
4:00	2	1	1	0	5	11	43	46	15	6	0	0	130
5:00	0	1	1	0	1	8	37	44	17	3	0	0	112
6:00	1	1	0	1	0	8	18	22	5	0	0	1	57
7:00	1	0	0	0	2	1	23	16	3	1	1	0	48
8:00	0	0	4	1	0	4	17	11	3	1	0	0	41
9:00	0	0	0	0	0	2	8	7	6	0	0	0	23
10:00	0	0	0	0	0	3	10	4	2	0	0	0	19
11:00	0	0	0	0	1	0	3	3	0	0	0	0	7
Total	7	7	11	4	12	114	365	384	145	26	2	3	1081

Chittenden County RPC

110 W Canal St
Winooski, VT 05404

Site Code: RICH20
Station ID:
Location 1: Hinesburg Rd, Richmond VT
Location 2: Between Wild Apple Ln and Lilac Knoll
Direction: East, A to B

File Name: RICH20
Date Printed: 6/22/2021
Start Date: 6/10/2021
End Date: 6/15/2021

6/12/2021	> 15 - 20	> 20 - 25	> 25 - 30	> 30 - 35	> 35 - 40	> 40 - 45	> 45 - 50	> 50 - 55	> 55 - 60	> 60 - 65	> 65 - 70	> 70 MPH	Total
Time	0 - 15 MPH	MPH	MPH	MPH	MPH	MPH	MPH	MPH	MPH	MPH	MPH	MPH	
12:00 AM	0	0	0	0	0	0	1	0	3	0	0	0	4
1:00	0	0	0	0	0	0	0	0	0	0	0	0	0
2:00	0	0	0	0	0	0	0	0	0	0	0	0	0
3:00	0	0	0	0	0	0	1	0	0	0	0	0	1
4:00	0	0	0	0	0	0	2	0	1	1	0	0	4
5:00	0	0	0	0	0	0	1	0	3	0	1	0	5
6:00	0	0	0	0	0	1	1	6	4	2	0	0	14
7:00	0	0	0	0	0	2	11	12	6	2	0	1	34
8:00	0	1	0	0	3	3	10	16	9	3	0	0	45
9:00	0	0	0	1	1	4	19	27	14	4	0	0	70
10:00	0	2	1	0	0	10	18	24	9	0	0	0	64
11:00	2	1	1	0	1	6	23	20	9	1	0	0	64
12:00 PM	0	3	2	0	0	4	33	28	12	2	0	0	84
1:00	1	0	0	0	2	5	32	29	17	2	0	0	88
2:00	1	3	3	0	4	14	26	28	10	1	0	0	90
3:00	0	0	0	1	1	5	22	35	9	2	1	1	78
4:00	1	1	2	0	2	7	32	41	11	3	0	0	100
5:00	0	0	0	0	1	12	17	32	9	0	0	0	71
6:00	0	0	1	1	0	3	21	23	12	2	1	1	65
7:00	0	0	1	0	0	2	10	21	6	0	0	0	40
8:00	0	0	0	0	1	3	17	11	2	0	0	0	34
9:00	0	0	0	0	1	8	16	9	1	0	0	0	35
10:00	0	0	0	0	1	0	8	2	2	0	0	0	13
11:00	0	0	0	0	0	0	1	2	0	0	0	0	3
Total	5	11	11	3	18	90	321	369	146	25	3	2	1006

Chittenden County RPC

110 W Canal St
Winooski, VT 05404

Site Code: RICH20
Station ID:
Location 1: Hinesburg Rd, Richmond VT
Location 2: Between Wild Apple Ln and Lilac Knoll
Direction: East, A to B

File Name: RICH20
Date Printed: 6/22/2021
Start Date: 6/10/2021
End Date: 6/15/2021

6/13/2021	> 15 - 20	> 20 - 25	> 25 - 30	> 30 - 35	> 35 - 40	> 40 - 45	> 45 - 50	> 50 - 55	> 55 - 60	> 60 - 65	> 65 - 70	> 70 MPH	Total
Time	0 - 15 MPH	MPH	MPH	MPH	MPH	MPH	MPH	MPH	MPH	MPH	MPH	MPH	
12:00 AM	0	0	0	0	0	2	3	1	1	0	0	0	7
1:00	0	0	0	0	0	0	1	3	0	0	0	0	4
2:00	0	0	0	0	0	0	1	0	0	0	0	0	1
3:00	0	0	0	0	0	0	1	1	0	0	0	0	2
4:00	0	0	0	0	0	0	0	0	0	0	0	0	0
5:00	0	0	0	0	0	2	2	1	0	0	0	0	5
6:00	0	0	0	0	1	0	5	6	1	1	0	0	14
7:00	1	1	0	0	0	1	6	8	4	1	0	0	22
8:00	0	1	0	0	0	2	9	14	4	1	0	0	31
9:00	2	1	2	2	3	4	13	11	3	1	0	0	42
10:00	0	3	1	1	0	4	16	25	9	3	0	1	63
11:00	0	2	0	0	0	14	21	27	5	4	1	0	74
12:00 PM	1	1	4	3	3	12	30	16	8	3	1	0	82
1:00	1	0	2	2	3	13	29	18	8	0	0	0	76
2:00	3	0	0	2	0	12	30	28	12	0	0	0	87
3:00	0	3	0	1	2	10	30	39	4	1	0	0	90
4:00	1	1	1	1	1	1	25	38	11	3	1	0	84
5:00	0	1	0	1	0	4	23	38	8	2	0	0	77
6:00	0	0	1	1	0	8	29	21	9	1	0	1	71
7:00	0	1	0	0	0	4	18	16	5	1	0	0	45
8:00	0	0	0	0	0	4	15	9	4	1	0	0	33
9:00	0	0	0	1	0	3	10	2	2	0	0	0	18
10:00	0	0	0	0	0	1	4	1	1	0	0	0	7
11:00	0	0	0	0	0	2	1	0	1	0	0	0	4
Total	9	15	11	15	13	103	322	323	100	23	3	2	939

Chittenden County RPC

110 W Canal St
Winooski, VT 05404

Site Code: RICH20
Station ID:
Location 1: Hinesburg Rd, Richmond VT
Location 2: Between Wild Apple Ln and Lilac Knoll
Direction: East, A to B

File Name: RICH20
Date Printed: 6/22/2021
Start Date: 6/10/2021
End Date: 6/15/2021

6/14/2021	> 15 - 20	> 20 - 25	> 25 - 30	> 30 - 35	> 35 - 40	> 40 - 45	> 45 - 50	> 50 - 55	> 55 - 60	> 60 - 65	> 65 - 70	> 70 MPH	Total
Time	0 - 15 MPH	MPH	MPH	MPH	MPH	MPH	MPH	MPH	MPH	MPH	MPH	MPH	
12:00 AM	0	0	0	0	0	2	0	0	0	0	0	0	2
1:00	0	0	0	0	0	0	0	0	0	0	0	0	0
2:00	0	0	0	0	0	0	0	0	0	1	0	0	1
3:00	0	0	0	0	1	0	0	0	0	0	0	0	1
4:00	0	0	0	0	0	1	0	0	0	0	0	0	1
5:00	0	0	0	0	0	5	6	0	4	0	0	0	15
6:00	0	0	1	0	0	0	0	12	2	0	0	0	15
7:00	0	0	0	0	2	12	27	23	4	1	0	0	69
8:00	0	0	0	0	0	2	17	21	10	1	0	0	51
9:00	0	0	0	0	1	7	13	17	4	0	1	0	43
10:00	0	0	0	0	2	6	16	9	5	0	0	0	38
11:00	0	0	0	0	1	5	28	13	2	2	0	0	51
12:00 PM	0	0	0	0	1	8	40	14	0	0	0	0	63
1:00	0	0	1	1	5	23	20	4	2	0	0	0	56
2:00	0	0	0	2	14	33	17	0	0	0	0	0	66
3:00	0	0	0	0	13	46	9	0	0	0	0	0	68
4:00	0	0	0	4	35	42	13	0	0	0	0	0	94
5:00	0	0	0	1	18	31	10	0	0	0	0	0	60
6:00	0	0	0	1	11	28	4	0	0	0	0	0	44
7:00	0	0	0	0	4	14	2	1	0	0	0	0	21
8:00	0	0	0	1	1	0	0	0	0	0	0	0	2
9:00	0	0	0	0	0	1	0	0	0	0	0	0	1
10:00	0	0	0	0	0	1	0	0	0	0	0	0	1
11:00	0	0	0	0	0	0	0	0	0	0	0	0	0
Total	0	0	2	10	109	267	222	114	33	5	1	0	763
Grand Total	24	43	54	34	169	674	1584	1605	565	102	15	8	4881

Stats	Percentile	15th	50th	85th	95th
	Speed	44.6	49.9	53.3	
	Mean Speed (Average)	44.3			
	10 MPH Pace Speed	40-49			
	Number in Pace	3723			
	Percent in Pace	64.0%			
	Number > 45 MPH	2299			
	Percent > 45 MPH	47.3%			

Chittenden County RPC

110 W Canal St
Winooski, VT 05404

Site Code: RICH20
Station ID:
Location 1: Hinesburg Rd, Richmond VT
Location 2: Between Wild Apple Ln and Lilac Knoll
Direction: West, B to A

File Name: RICH20
Date Printed: 6/22/2021
Start Date: 6/10/2021
End Date: 6/15/2021

6/10/2021	> 15 - 20	> 20 - 25	> 25 - 30	> 30 - 35	> 35 - 40	> 40 - 45	> 45 - 50	> 50 - 55	> 55 - 60	> 60 - 65	> 65 - 70	> 70 MPH	Total
Time	0 - 15 MPH	MPH	MPH	MPH	MPH	MPH	MPH	MPH	MPH	MPH	MPH	MPH	
12:00 AM	0	0	0	0	0	0	0	0	0	0	0	0	0
1:00	0	0	0	0	0	0	0	0	0	0	0	0	0
2:00	0	0	0	0	0	0	0	0	0	0	0	0	1
3:00	0	0	0	0	0	0	0	1	1	0	0	0	2
4:00	0	0	0	0	1	2	2	0	0	0	0	0	5
5:00	0	0	0	0	0	1	6	3	0	3	1	0	14
6:00	0	1	1	0	0	7	12	15	10	3	0	0	49
7:00	0	1	0	0	0	5	26	41	32	4	0	2	111
8:00	0	0	0	1	2	10	32	36	18	2	0	0	101
9:00	1	0	0	0	1	7	17	20	10	2	0	0	58
10:00	0	0	0	0	1	9	11	25	7	2	0	0	55
11:00	0	1	1	0	1	9	11	10	11	1	0	0	45
12:00 PM	0	1	0	0	1	14	22	18	8	0	0	0	64
1:00	0	1	0	0	1	6	15	18	5	0	0	0	46
2:00	1	0	0	0	2	7	31	28	12	1	0	0	82
3:00	0	0	0	0	2	6	34	32	10	3	1	0	88
4:00	0	5	0	1	1	5	33	37	9	1	0	0	92
5:00	1	1	0	1	3	5	29	30	13	2	0	0	85
6:00	3	0	0	0	3	8	24	36	7	1	0	0	82
7:00	1	0	0	0	2	9	22	14	3	3	0	0	54
8:00	0	0	0	0	0	5	11	16	6	0	0	0	38
9:00	0	0	0	0	1	4	4	9	2	0	0	0	20
10:00	0	0	0	0	0	2	3	6	0	0	0	0	11
11:00	0	0	0	0	0	2	0	3	1	0	0	0	6
Total	7	11	2	3	22	123	345	398	165	29	2	2	1109

Chittenden County RPC

110 W Canal St
Winooski, VT 05404

Site Code: RICH20
Station ID:
Location 1: Hinesburg Rd, Richmond VT
Location 2: Between Wild Apple Ln and Lilac Knoll
Direction: West, B to A

File Name: RICH20
Date Printed: 6/22/2021
Start Date: 6/10/2021
End Date: 6/15/2021

6/11/2021	> 15 - 20	> 20 - 25	> 25 - 30	> 30 - 35	> 35 - 40	> 40 - 45	> 45 - 50	> 50 - 55	> 55 - 60	> 60 - 65	> 65 - 70	> 70 MPH	Total
Time	0 - 15 MPH	MPH	MPH	MPH	MPH	MPH	MPH	MPH	MPH	MPH	MPH	MPH	
12:00 AM	0	0	0	0	1	0	1	0	1	0	0	0	3
1:00	0	0	0	0	0	0	0	0	0	0	0	0	0
2:00	0	0	0	0	0	0	0	0	0	0	0	0	0
3:00	0	0	0	0	0	0	1	1	0	0	0	0	2
4:00	0	0	0	0	2	0	1	1	0	0	0	0	4
5:00	0	0	0	0	1	0	2	5	3	1	1	0	13
6:00	0	0	0	0	0	2	11	11	7	2	0	0	33
7:00	0	0	0	0	2	10	42	37	13	1	0	0	105
8:00	0	0	0	0	1	11	26	36	9	2	1	0	86
9:00	0	0	0	0	1	4	26	26	5	2	0	0	64
10:00	0	0	0	0	1	7	28	17	7	1	0	0	61
11:00	0	0	0	0	3	7	11	22	11	0	0	0	54
12:00 PM	0	0	0	0	3	3	21	28	11	1	1	2	70
1:00	0	1	2	0	6	5	21	25	11	4	0	0	75
2:00	0	0	0	0	1	10	25	23	11	0	0	0	70
3:00	0	0	0	1	1	10	26	42	6	1	3	0	90
4:00	0	0	2	0	4	9	32	41	9	1	0	0	98
5:00	1	0	0	1	1	6	24	28	19	3	1	1	85
6:00	0	0	0	1	2	9	16	30	8	0	0	0	66
7:00	0	1	0	0	0	3	23	25	1	1	0	0	54
8:00	1	0	0	0	1	4	18	15	2	0	0	1	42
9:00	0	0	0	0	1	3	10	7	2	1	0	0	24
10:00	0	0	1	0	1	1	4	3	2	0	0	0	12
11:00	0	0	0	0	0	1	3	2	2	0	0	0	8
Total	2	2	5	3	33	105	372	425	140	21	7	4	1119

Chittenden County RPC

110 W Canal St
Winooski, VT 05404

Site Code: RICH20
Station ID:
Location 1: Hinesburg Rd, Richmond VT
Location 2: Between Wild Apple Ln and Lilac Knoll
Direction: West, B to A

File Name: RICH20
Date Printed: 6/22/2021
Start Date: 6/10/2021
End Date: 6/15/2021

6/12/2021	> 15 - 20	> 20 - 25	> 25 - 30	> 30 - 35	> 35 - 40	> 40 - 45	> 45 - 50	> 50 - 55	> 55 - 60	> 60 - 65	> 65 - 70	> 70 MPH	Total
Time	0 - 15 MPH	MPH	MPH	MPH	MPH	MPH	MPH	MPH	MPH	MPH	MPH	MPH	
12:00 AM	0	0	0	0	0	0	2	1	0	0	0	0	3
1:00	0	0	0	0	0	1	1	0	1	0	0	0	3
2:00	0	0	0	0	0	0	1	0	0	0	0	0	1
3:00	0	0	0	0	0	0	1	1	0	0	0	0	2
4:00	0	0	0	0	0	0	1	0	0	0	0	0	1
5:00	0	0	0	0	0	0	0	1	2	0	0	0	3
6:00	0	0	0	0	0	1	6	7	3	0	0	1	18
7:00	0	1	1	0	0	4	9	9	8	2	0	0	34
8:00	0	0	0	0	1	3	10	21	11	2	0	0	48
9:00	0	0	1	2	0	6	19	29	10	5	0	0	72
10:00	0	0	1	0	1	9	25	40	13	2	0	0	91
11:00	1	0	1	0	2	11	19	22	7	1	0	0	64
12:00 PM	2	3	0	0	5	15	27	28	13	1	0	0	94
1:00	2	2	1	0	1	11	26	31	10	1	0	0	85
2:00	1	2	0	0	1	8	26	19	9	2	0	0	68
3:00	0	1	1	1	0	12	27	20	9	2	0	0	73
4:00	0	0	1	0	1	7	31	24	5	1	0	0	71
5:00	0	3	0	1	1	12	22	35	18	1	0	1	94
6:00	0	0	0	0	2	9	22	24	1	5	0	0	63
7:00	1	0	0	0	1	6	20	12	1	0	0	0	41
8:00	0	1	0	0	2	8	15	12	3	0	0	0	41
9:00	0	0	0	0	3	6	11	6	2	0	0	0	28
10:00	0	0	0	0	1	2	3	3	0	0	1	0	10
11:00	0	0	0	0	1	0	1	1	0	0	0	0	3
Total	7	13	7	4	23	131	325	346	126	25	2	1	1011

Chittenden County RPC

110 W Canal St
Winooski, VT 05404

Site Code: RICH20
 Station ID:
 Location 1: Hinesburg Rd, Richmond VT
 Location 2: Between Wild Apple Ln and Lilac Knoll
 Direction: West, B to A

File Name: RICH20
 Date Printed: 6/22/2021
 Start Date: 6/10/2021
 End Date: 6/15/2021

6/13/2021	> 15 - 20	> 20 - 25	> 25 - 30	> 30 - 35	> 35 - 40	> 40 - 45	> 45 - 50	> 50 - 55	> 55 - 60	> 60 - 65	> 65 - 70	> 70 MPH	Total
Time	0 - 15 MPH	MPH	MPH	MPH	MPH	MPH	MPH	MPH	MPH	MPH	MPH	MPH	
12:00 AM	0	0	0	0	1	0	2	2	0	0	0	0	5
1:00	0	0	0	0	0	0	0	1	1	0	0	0	2
2:00	0	0	0	0	0	0	0	0	0	0	0	0	0
3:00	0	0	0	0	0	0	3	1	0	0	0	0	4
4:00	0	0	0	0	1	0	0	0	0	0	0	0	1
5:00	0	0	0	0	0	0	2	2	0	0	0	0	4
6:00	0	0	0	0	0	0	3	6	1	0	0	0	10
7:00	0	0	0	0	0	3	9	5	2	0	0	0	19
8:00	0	0	0	0	2	3	11	18	8	0	1	0	43
9:00	2	1	0	3	0	7	20	18	7	0	1	0	59
10:00	0	2	0	0	1	10	31	22	10	2	0	0	78
11:00	1	1	1	1	1	9	15	31	10	1	1	0	72
12:00 PM	1	3	1	0	8	10	28	21	12	1	0	0	85
1:00	0	0	0	1	3	4	31	29	2	1	0	1	72
2:00	0	2	0	0	2	12	28	24	5	2	0	0	75
3:00	0	2	1	0	2	14	27	30	8	5	1	0	90
4:00	0	4	0	0	5	11	29	20	5	0	0	0	74
5:00	1	0	0	0	4	5	28	26	9	1	1	0	75
6:00	0	0	0	0	2	6	16	17	8	1	0	0	50
7:00	0	0	0	1	0	3	20	13	7	0	0	1	45
8:00	0	0	0	0	0	3	10	13	2	1	0	0	29
9:00	0	0	0	1	2	6	4	1	1	0	0	0	15
10:00	0	0	0	1	0	0	3	1	1	0	0	0	6
11:00	0	0	0	0	0	0	1	0	0	0	0	0	1
Total	5	15	3	8	34	106	321	301	99	15	5	1	914

Chittenden County RPC

110 W Canal St
Winooski, VT 05404

Site Code: RICH20
Station ID:
Location 1: Hinesburg Rd, Richmond VT
Location 2: Between Wild Apple Ln and Lilac Knoll
Direction: West, B to A

File Name: RICH20
Date Printed: 6/22/2021
Start Date: 6/10/2021
End Date: 6/15/2021

6/14/2021	> 15 - 20	> 20 - 25	> 25 - 30	> 30 - 35	> 35 - 40	> 40 - 45	> 45 - 50	> 50 - 55	> 55 - 60	> 60 - 65	> 65 - 70	> 70 MPH	Total
Time	0 - 15 MPH	MPH	MPH	MPH	MPH	MPH	MPH	MPH	MPH	MPH	MPH	MPH	
12:00 AM	0	0	0	0	0	0	0	0	0	0	0	0	0
1:00	0	0	0	0	0	0	0	0	0	0	0	0	0
2:00	0	0	0	0	0	0	1	0	0	0	0	0	1
3:00	0	0	0	0	0	1	2	1	0	0	0	0	4
4:00	0	0	0	1	0	0	1	0	0	0	0	0	2
5:00	0	0	0	0	0	0	4	4	1	0	1	0	10
6:00	1	0	0	1	0	1	7	9	4	3	3	0	29
7:00	0	0	0	1	2	9	33	33	21	4	1	0	104
8:00	0	0	0	0	1	7	21	26	16	5	0	0	76
9:00	0	0	0	0	1	5	21	18	11	1	1	0	58
10:00	0	0	0	1	0	3	20	16	10	3	0	0	53
11:00	0	0	0	0	5	5	14	13	4	0	1	0	42
12:00 PM	0	0	0	0	0	6	15	20	10	3	0	0	54
1:00	0	0	0	0	0	0	2	3	2	0	0	0	7
2:00	0	0	0	0	0	0	0	0	0	0	0	0	0
3:00	0	0	0	0	0	0	0	0	0	0	0	0	0
4:00	0	0	0	1	0	0	0	0	0	0	0	0	1
5:00	0	0	0	0	0	0	0	0	0	0	0	0	0
6:00	0	0	0	0	0	0	0	0	0	0	0	0	0
7:00	0	0	0	0	0	0	0	0	0	0	0	0	0
8:00	0	0	0	0	0	0	0	0	0	0	0	0	0
9:00	0	0	0	0	0	0	0	0	0	0	0	0	0
10:00	0	0	0	0	0	0	0	0	0	0	0	0	0
11:00	0	0	0	0	0	0	0	0	0	0	0	0	0
Total	1	0	0	5	9	37	141	143	79	19	7	0	441
Grand Total	22	41	17	23	121	502	1504	1613	609	109	23	8	4594
Stats			Percentile	15th	50th	85th	95th						
			Speed	44.6	49.9	53.3							
			Mean Speed (Average)	45.0									
			10 MPH Pace Speed	41-50									
			Number in Pace	3466									
			Percent in Pace	67.0%									
			Number > 45 MPH	2364									
			Percent > 45 MPH	51.7%									

Chittenden County RPC

110 W Canal St
Winooski, VT 05404

Site Code: RICH20
Station ID:
Location 1: Hinesburg Rd, Richmond VT
Location 2: Between Wild Apple Ln and Lilac Knoll
Direction: Combined

File Name: RICH20
Date Printed: 6/22/2021
Start Date: 6/10/2021
End Date: 6/15/2021

6/10/2021	> 15 - 20	> 20 - 25	> 25 - 30	> 30 - 35	> 35 - 40	> 40 - 45	> 45 - 50	> 50 - 55	> 55 - 60	> 60 - 65	> 65 - 70	> 70 MPH	Total
Time	0 - 15 MPH	MPH	MPH	MPH	MPH	MPH	MPH	MPH	MPH	MPH	MPH		
12:00 AM	0	0	0	0	0	0	0	1	0	0	0	0	1
1:00	0	0	0	0	0	0	1	0	0	0	1	0	2
2:00	0	0	0	0	0	1	0	0	0	1	0	0	2
3:00	0	0	0	0	0	1	0	2	1	0	0	0	4
4:00	0	0	0	0	2	3	2	2	1	1	0	0	11
5:00	0	0	1	0	0	4	10	4	3	3	1	0	26
6:00	0	2	2	0	0	8	17	19	16	6	0	0	70
7:00	1	1	1	0	5	10	49	64	42	6	1	2	182
8:00	1	0	1	1	3	14	46	61	25	3	2	0	157
9:00	1	2	0	1	1	15	30	41	17	2	0	0	110
10:00	0	0	1	0	1	14	31	49	12	3	0	0	111
11:00	0	2	2	0	3	14	28	28	20	2	0	0	99
12:00 PM	0	1	2	0	2	25	48	34	16	2	0	0	130
1:00	0	1	4	1	1	10	41	43	9	2	0	0	112
2:00	1	1	0	0	3	14	59	57	18	2	0	0	155
3:00	0	0	4	0	5	18	80	75	22	3	1	0	208
4:00	0	5	0	1	1	9	68	89	18	4	0	0	195
5:00	2	1	2	1	3	12	67	83	28	5	0	1	205
6:00	3	3	0	0	3	15	36	66	27	2	1	0	156
7:00	1	0	1	0	4	10	40	36	15	3	0	0	111
8:00	0	2	0	0	0	10	27	30	7	0	0	0	76
9:00	0	0	0	0	2	11	11	13	6	1	1	0	45
10:00	0	0	0	0	0	3	6	9	2	0	0	0	20
11:00	0	0	0	0	0	2	2	7	1	1	0	0	13
Total	10	21	21	5	39	223	699	813	306	52	8	3	2201

Chittenden County RPC

110 W Canal St
Winooski, VT 05404

Site Code: RICH20
Station ID:
Location 1: Hinesburg Rd, Richmond VT
Location 2: Between Wild Apple Ln and Lilac Knoll
Direction: Combined

File Name: RICH20
Date Printed: 6/22/2021
Start Date: 6/10/2021
End Date: 6/15/2021

6/11/2021	> 15 - 20	> 20 - 25	> 25 - 30	> 30 - 35	> 35 - 40	> 40 - 45	> 45 - 50	> 50 - 55	> 55 - 60	> 60 - 65	> 65 - 70	> 70 MPH	Total
Time	0 - 15 MPH	MPH	MPH	MPH	MPH	MPH	MPH	MPH	MPH	MPH	MPH	MPH	
12:00 AM	0	0	0	0	1	1	1	1	1	0	0	0	5
1:00	0	0	0	0	0	0	0	0	0	0	0	0	0
2:00	0	0	0	0	0	0	0	0	0	0	0	0	0
3:00	0	0	0	0	0	1	1	0	0	0	0	0	2
4:00	0	0	0	0	2	2	1	2	1	0	0	0	8
5:00	0	0	0	0	1	1	4	10	6	2	1	0	25
6:00	0	0	1	0	0	2	14	15	11	2	0	0	45
7:00	1	0	2	0	3	24	67	66	19	2	0	1	186
8:00	0	2	0	0	1	15	40	48	19	8	1	0	134
9:00	0	0	0	2	1	10	50	48	16	2	0	0	129
10:00	1	1	0	0	1	9	38	29	10	2	0	0	91
11:00	1	0	0	0	3	19	26	48	17	1	0	0	115
12:00 PM	0	0	1	0	4	13	41	52	23	4	2	2	142
1:00	0	2	2	0	7	12	52	54	16	4	0	0	149
2:00	0	0	0	0	1	17	52	62	23	2	0	1	158
3:00	0	0	1	1	1	21	61	69	27	1	3	0	185
4:00	2	1	3	0	9	20	75	87	24	7	0	0	228
5:00	1	1	1	1	2	14	61	72	36	6	1	1	197
6:00	1	1	0	2	2	17	34	52	13	0	0	1	123
7:00	1	1	0	0	2	4	46	41	4	2	1	0	102
8:00	1	0	4	1	1	8	35	26	5	1	0	1	83
9:00	0	0	0	0	1	5	18	14	8	1	0	0	47
10:00	0	0	1	0	1	4	14	7	4	0	0	0	31
11:00	0	0	0	0	1	1	6	5	2	0	0	0	15
Total	9	9	16	7	45	219	737	809	285	47	9	7	2200

Chittenden County RPC

110 W Canal St
Winooski, VT 05404

Site Code: RICH20
Station ID:
Location 1: Hinesburg Rd, Richmond VT
Location 2: Between Wild Apple Ln and Lilac Knoll
Direction: Combined

File Name: RICH20
Date Printed: 6/22/2021
Start Date: 6/10/2021
End Date: 6/15/2021

6/12/2021	> 15 - 20	> 20 - 25	> 25 - 30	> 30 - 35	> 35 - 40	> 40 - 45	> 45 - 50	> 50 - 55	> 55 - 60	> 60 - 65	> 65 - 70	> 70 MPH	Total
Time	0 - 15 MPH	MPH	MPH	MPH	MPH	MPH	MPH	MPH	MPH	MPH	MPH	MPH	
12:00 AM	0	0	0	0	0	0	3	1	3	0	0	0	7
1:00	0	0	0	0	0	1	1	0	1	0	0	0	3
2:00	0	0	0	0	0	0	1	0	0	0	0	0	1
3:00	0	0	0	0	0	0	2	1	0	0	0	0	3
4:00	0	0	0	0	0	0	3	0	1	1	0	0	5
5:00	0	0	0	0	0	1	0	4	2	0	1	0	8
6:00	0	0	0	0	0	2	7	13	7	2	0	1	32
7:00	0	1	1	0	0	6	20	21	14	4	0	1	68
8:00	0	1	0	0	4	6	20	37	20	5	0	0	93
9:00	0	0	1	3	1	10	38	56	24	9	0	0	142
10:00	0	2	2	0	1	19	43	64	22	2	0	0	155
11:00	3	1	2	0	3	17	42	42	16	2	0	0	128
12:00 PM	2	6	2	0	5	19	60	56	25	3	0	0	178
1:00	3	2	1	0	3	16	58	60	27	3	0	0	173
2:00	2	5	3	0	5	22	52	47	19	3	0	0	158
3:00	0	1	1	2	1	17	49	55	18	4	1	1	151
4:00	1	1	3	0	3	14	63	65	16	4	1	0	171
5:00	0	3	0	1	2	24	39	67	27	1	0	1	165
6:00	0	0	1	1	2	12	43	47	13	7	1	1	128
7:00	1	0	1	0	1	8	30	33	7	0	0	0	81
8:00	0	1	0	0	3	11	32	23	5	0	0	0	75
9:00	0	0	0	0	4	14	27	15	3	0	0	0	63
10:00	0	0	0	0	2	2	11	5	2	0	1	0	23
11:00	0	0	0	0	1	0	2	3	0	0	0	0	6
Total	12	24	18	7	41	221	646	715	272	50	5	3	2017

Chittenden County RPC

110 W Canal St
Winooski, VT 05404

Site Code: RICH20
Station ID:
Location 1: Hinesburg Rd, Richmond VT
Location 2: Between Wild Apple Ln and Lilac Knoll
Direction: Combined

File Name: RICH20
Date Printed: 6/22/2021
Start Date: 6/10/2021
End Date: 6/15/2021

6/13/2021	> 15 - 20	> 20 - 25	> 25 - 30	> 30 - 35	> 35 - 40	> 40 - 45	> 45 - 50	> 50 - 55	> 55 - 60	> 60 - 65	> 65 - 70	> 70 MPH	Total
Time	0 - 15 MPH	MPH	MPH	MPH	MPH	MPH	MPH	MPH	MPH	MPH	MPH	MPH	
12:00 AM	0	0	0	0	1	2	5	3	1	0	0	0	12
1:00	0	0	0	0	0	0	1	4	1	0	0	0	6
2:00	0	0	0	0	0	0	1	0	0	0	0	0	1
3:00	0	0	0	0	0	0	4	2	0	0	0	0	6
4:00	0	0	0	0	1	0	0	0	0	0	0	0	1
5:00	0	0	0	0	0	2	4	3	0	0	0	0	9
6:00	0	0	0	0	1	0	8	12	2	1	0	0	24
7:00	1	1	0	0	0	4	15	13	6	1	0	0	41
8:00	0	1	0	0	2	5	20	32	12	1	1	0	74
9:00	4	2	2	5	3	11	33	29	10	1	1	0	101
10:00	0	5	1	1	1	14	47	47	19	5	0	1	141
11:00	1	3	1	1	1	23	36	58	15	5	2	0	146
12:00 PM	2	4	5	3	11	22	58	37	20	4	1	0	167
1:00	1	0	2	3	6	17	60	47	10	1	0	0	148
2:00	3	2	0	2	2	24	58	52	17	2	0	0	162
3:00	0	5	1	1	4	24	57	69	12	6	1	0	180
4:00	1	5	1	1	6	12	54	58	16	3	1	0	158
5:00	1	1	0	1	4	9	51	64	17	3	1	0	152
6:00	0	0	1	1	2	14	45	38	17	2	0	1	121
7:00	0	1	0	1	0	7	38	29	12	1	0	1	90
8:00	0	0	0	0	0	7	25	22	6	2	0	0	62
9:00	0	0	0	2	2	9	14	3	3	0	0	0	33
10:00	0	0	0	1	0	1	7	2	2	0	0	0	13
11:00	0	0	0	0	0	2	2	0	1	0	0	0	5
Total	14	30	14	23	47	209	643	624	199	38	8	3	1853

Chittenden County RPC

110 W Canal St
Winooski, VT 05404

Site Code: RICH20
Station ID:
Location 1: Hinesburg Rd, Richmond VT
Location 2: Between Wild Apple Ln and Lilac Knoll
Direction: Combined

File Name: RICH20
Date Printed: 6/22/2021
Start Date: 6/10/2021
End Date: 6/15/2021

6/14/2021	> 15 - 20	> 20 - 25	> 25 - 30	> 30 - 35	> 35 - 40	> 40 - 45	> 45 - 50	> 50 - 55	> 55 - 60	> 60 - 65	> 65 - 70	> 70 MPH	Total
Time	0 - 15 MPH	MPH	MPH	MPH	MPH	MPH	MPH	MPH	MPH	MPH	MPH	MPH	
12:00 AM	0	0	0	0	0	2	0	0	0	0	0	0	2
1:00	0	0	0	0	0	0	0	0	0	0	0	0	0
2:00	0	0	0	0	0	0	1	0	0	1	0	0	2
3:00	0	0	0	0	1	1	2	1	0	0	0	0	5
4:00	0	0	0	1	0	1	1	0	0	0	0	0	3
5:00	0	0	0	0	0	5	10	4	5	0	1	0	25
6:00	1	0	1	1	0	1	7	21	6	3	3	0	44
7:00	0	0	0	1	4	21	60	56	25	5	1	0	173
8:00	0	0	0	0	1	9	38	47	26	6	0	0	127
9:00	0	0	0	0	2	12	34	35	15	1	2	0	101
10:00	0	0	0	1	2	9	36	25	15	3	0	0	91
11:00	0	0	0	0	6	10	42	26	6	2	1	0	93
12:00 PM	0	0	0	0	1	14	55	34	10	3	0	0	117
1:00	0	0	1	1	5	23	22	7	4	0	0	0	63
2:00	0	0	0	2	14	33	17	0	0	0	0	0	66
3:00	0	0	0	0	13	46	9	0	0	0	0	0	68
4:00	0	0	0	5	35	42	13	0	0	0	0	0	95
5:00	0	0	0	1	18	31	10	0	0	0	0	0	60
6:00	0	0	0	1	11	28	4	0	0	0	0	0	44
7:00	0	0	0	0	4	14	2	1	0	0	0	0	21
8:00	0	0	0	1	1	0	0	0	0	0	0	0	2
9:00	0	0	0	0	0	1	0	0	0	0	0	0	1
10:00	0	0	0	0	0	1	0	0	0	0	0	0	1
11:00	0	0	0	0	0	0	0	0	0	0	0	0	0
Total	1	0	2	15	118	304	363	257	112	24	8	0	1204
Grand Total	46	84	71	57	290	1176	3088	3218	1174	211	38	16	9475
Stats			Percentile	15th	50th	85th	95th						
			Speed	44.6	49.9	53.3							
			Mean Speed (Average)	44.6									
			10 MPH Pace Speed	41-50									
			Number in Pace	7137									
			Percent in Pace	65.0%									
			Number > 45 MPH	4663									
			Percent > 45 MPH	49.5%									

Chittenden County RPC

110 W Canal St
Winooski, VT 05404

Site Code: RICH30
Station ID: RICH30
Location 1: Huntington Rd, Richmond VT
Location 2: Between Grandview Dr & Pinetree Rd, 45 MPH
Direction: A to B, None Specified

File Name: RICH30
Date Printed: 7/22/2021
Start Date: 7/15/2021
End Date: 7/21/2021

7/15/2021		> 15 - 20	> 20 - 25	> 25 - 30	> 30 - 35	> 35 - 40	> 40 - 45	> 45 - 50	> 50 - 55	> 55 - 60	> 60 - 65	> 65 - 70	> 70 MPH	Total
Time	0 - 15 MPH	MPH	MPH	MPH	MPH	MPH	MPH	MPH	MPH	MPH	MPH	MPH		
12:00 AM	0	0	0	0	0	0	3	2	2	1	0	0	0	8
1:00	0	0	0	0	0	1	0	0	0	0	1	0	0	2
2:00	0	0	0	0	0	0	0	1	1	0	0	0	0	2
3:00	0	0	0	0	0	0	0	1	0	0	0	0	0	1
4:00	0	0	0	0	0	0	0	0	0	1	0	0	0	1
5:00	0	0	0	1	0	0	0	2	0	1	0	0	0	4
6:00	0	0	0	0	0	1	2	7	11	2	1	0	0	24
7:00	0	0	0	0	0	3	9	22	10	2	2	0	0	48
8:00	0	0	1	0	0	2	7	31	20	6	1	0	0	68
9:00	0	0	0	0	1	2	12	26	20	3	1	0	0	65
10:00	0	0	0	0	1	1	19	39	14	8	0	0	0	82
11:00	0	0	0	0	2	4	19	28	15	4	2	0	0	74
12:00 PM	1	1	0	1	1	2	14	38	18	4	0	0	0	80
1:00	0	1	0	0	1	6	39	45	22	7	0	0	1	122
2:00	0	0	0	0	2	9	19	36	20	4	0	1	0	91
3:00	0	0	0	0	1	5	30	66	29	6	0	1	0	138
4:00	0	0	0	0	1	6	42	86	72	7	3	0	0	217
5:00	0	1	0	0	0	6	32	97	47	6	2	0	1	192
6:00	0	0	0	0	0	3	16	57	29	7	4	0	0	116
7:00	0	0	0	0	0	1	10	33	15	5	0	0	0	64
8:00	0	1	0	0	0	2	16	29	15	7	1	0	0	71
9:00	0	0	0	0	0	0	13	25	17	2	0	0	0	57
10:00	0	0	0	0	0	0	10	11	7	1	0	0	0	29
11:00	0	0	0	0	0	1	2	3	4	1	2	0	1	14
Total	1	4	1	2	10	55	314	685	388	85	20	2	3	1570

Chittenden County RPC

110 W Canal St
Winooski, VT 05404

Site Code: RICH30
Station ID: RICH30
Location 1: Huntington Rd, Richmond VT
Location 2: Between Grandview Dr & Pinetree Rd, 45 MPH
Direction: A to B, None Specified

File Name: RICH30
Date Printed: 7/22/2021
Start Date: 7/15/2021
End Date: 7/21/2021

7/16/2021	> 15 - 20	> 20 - 25	> 25 - 30	> 30 - 35	> 35 - 40	> 40 - 45	> 45 - 50	> 50 - 55	> 55 - 60	> 60 - 65	> 65 - 70	> 70 MPH	Total
Time 0 - 15 MPH	MPH	MPH	MPH	MPH	MPH	MPH	MPH	MPH	MPH	MPH	MPH	MPH	
12:00 AM	0	1	0	0	0	0	2	1	1	1	1	0	7
1:00	0	0	0	0	0	0	0	0	0	1	1	0	2
2:00	0	0	0	0	0	0	0	0	2	0	0	0	2
3:00	0	0	0	0	0	0	0	0	0	0	0	0	0
4:00	0	0	0	0	0	0	0	0	1	0	0	0	1
5:00	0	0	0	0	0	0	2	2	0	0	0	0	4
6:00	0	0	0	0	0	1	2	7	3	2	2	0	17
7:00	0	0	0	1	1	2	8	6	13	0	2	0	33
8:00	0	0	0	0	0	6	9	24	16	6	1	0	62
9:00	0	0	0	2	0	3	15	29	13	1	0	0	63
10:00	0	0	0	0	0	2	8	23	13	3	2	0	51
11:00	0	0	0	0	2	7	21	22	17	4	0	0	73
12:00 PM	0	0	0	0	0	5	32	31	19	3	2	0	92
1:00	0	0	0	0	4	2	18	42	17	4	1	0	88
2:00	0	1	0	0	4	6	15	31	22	8	2	0	89
3:00	0	0	0	1	0	6	33	45	35	8	1	1	131
4:00	0	0	0	1	1	4	35	73	33	9	0	0	156
5:00	0	0	1	0	0	3	26	83	50	5	4	0	173
6:00	0	0	0	0	0	5	21	58	35	7	2	0	130
7:00	0	0	0	1	1	2	13	28	22	4	3	0	74
8:00	0	0	0	0	0	1	10	16	16	6	0	2	51
9:00	0	0	1	0	0	0	16	31	17	2	1	0	68
10:00	0	0	0	0	0	0	7	10	9	6	1	0	33
11:00	0	0	0	0	0	0	7	11	11	1	0	0	30
Total	0	2	2	6	13	55	300	573	365	81	26	3	1430

Chittenden County RPC

110 W Canal St
Winooski, VT 05404

Site Code: RICH30
Station ID: RICH30
Location 1: Huntington Rd, Richmond VT
Location 2: Between Grandview Dr & Pinetree Rd, 45 MPH
Direction: A to B, None Specified

File Name: RICH30
Date Printed: 7/22/2021
Start Date: 7/15/2021
End Date: 7/21/2021

7/17/2021		> 15 - 20	> 20 - 25	> 25 - 30	> 30 - 35	> 35 - 40	> 40 - 45	> 45 - 50	> 50 - 55	> 55 - 60	> 60 - 65	> 65 - 70	> 70 MPH	Total
Time	0 - 15 MPH	MPH	MPH	MPH	MPH	MPH	MPH	MPH	MPH	MPH	MPH	MPH		
12:00 AM	0	0	0	0	0	0	0	0	3	2	1	0	0	6
1:00	0	0	0	0	0	0	1	0	0	0	0	0	0	1
2:00	0	0	0	0	0	0	1	0	3	0	0	0	0	4
3:00	0	0	0	0	0	1	1	0	0	0	0	0	1	3
4:00	0	0	0	0	0	0	0	0	1	2	0	0	0	3
5:00	0	0	0	0	0	0	0	0	1	0	0	0	0	1
6:00	0	0	0	0	0	0	2	6	4	0	0	0	0	12
7:00	0	0	0	0	0	1	3	9	3	0	0	0	0	16
8:00	0	0	0	0	0	1	7	14	13	3	0	2	0	40
9:00	0	0	0	0	1	2	15	37	12	3	0	0	0	70
10:00	1	0	0	0	0	3	19	31	14	2	3	0	0	73
11:00	0	0	0	0	0	5	16	43	24	8	0	0	0	96
12:00 PM	0	0	0	0	0	11	20	50	21	3	0	0	0	105
1:00	1	0	0	1	1	10	29	47	26	7	1	1	0	124
2:00	0	0	0	0	0	4	19	48	27	7	1	0	1	107
3:00	0	0	0	0	0	2	25	49	31	6	2	0	0	115
4:00	0	0	1	2	0	2	11	44	33	7	2	0	0	102
5:00	0	0	0	0	1	4	11	32	15	2	1	0	0	66
6:00	0	0	0	1	0	1	7	25	15	2	0	0	1	52
7:00	0	0	0	0	0	2	12	17	13	4	1	0	0	49
8:00	0	0	0	0	0	1	16	27	7	4	0	0	0	55
9:00	0	0	0	0	0	6	10	12	8	1	1	0	1	39
10:00	0	0	0	0	0	1	4	8	5	4	0	0	0	22
11:00	0	0	0	0	0	1	2	2	0	1	0	0	0	6
Total	2	0	1	4	3	58	231	501	279	68	13	3	4	1167

Chittenden County RPC

110 W Canal St
Winooski, VT 05404

Site Code: RICH30
Station ID: RICH30
Location 1: Huntington Rd, Richmond VT
Location 2: Between Grandview Dr & Pinetree Rd, 45 MPH
Direction: A to B, None Specified

File Name: RICH30
Date Printed: 7/22/2021
Start Date: 7/15/2021
End Date: 7/21/2021

7/18/2021		> 15 - 20	> 20 - 25	> 25 - 30	> 30 - 35	> 35 - 40	> 40 - 45	> 45 - 50	> 50 - 55	> 55 - 60	> 60 - 65	> 65 - 70	> 70 MPH	Total
Time	0 - 15 MPH	MPH	MPH	MPH	MPH	MPH	MPH	MPH	MPH	MPH	MPH	MPH		
12:00 AM	0	0	0	0	1	0	2	1	1	0	0	0	0	5
1:00	0	1	0	0	0	0	0	1	2	1	0	0	1	6
2:00	0	0	0	0	0	1	1	0	0	2	0	0	0	4
3:00	0	0	0	0	0	0	0	0	1	0	0	0	0	1
4:00	0	0	0	0	0	0	0	0	1	0	0	0	0	1
5:00	0	0	0	0	0	0	0	0	0	0	0	0	0	0
6:00	0	0	0	0	0	0	2	1	1	0	0	0	0	4
7:00	0	0	0	0	0	0	2	4	2	0	0	0	0	8
8:00	0	0	0	0	0	2	2	7	8	0	0	0	0	19
9:00	0	0	0	0	0	1	5	14	9	1	0	0	0	30
10:00	0	0	0	0	0	1	8	18	10	3	1	1	0	42
11:00	0	0	0	0	2	0	11	28	19	2	0	0	0	62
12:00 PM	0	0	0	1	0	3	11	38	26	6	0	1	0	86
1:00	0	0	0	0	0	1	6	32	24	5	2	0	0	70
2:00	0	0	0	0	0	4	11	36	21	8	0	0	0	80
3:00	0	0	0	0	0	2	8	26	22	4	0	0	0	62
4:00	0	0	0	1	0	1	20	29	33	6	0	0	1	91
5:00	0	0	0	0	0	1	10	28	26	12	1	1	0	79
6:00	0	0	2	0	0	1	8	29	12	5	0	1	0	58
7:00	0	0	0	0	0	1	18	34	16	3	3	1	0	76
8:00	0	0	0	0	0	0	12	11	11	4	1	0	0	39
9:00	0	0	0	0	0	1	6	11	6	2	2	0	0	28
10:00	0	0	0	0	0	0	2	4	3	1	0	0	0	10
11:00	0	0	0	0	0	0	0	1	4	1	1	0	0	7
Total	0	1	2	2	3	20	145	353	258	66	11	5	2	868

Chittenden County RPC

110 W Canal St
Winooski, VT 05404

Site Code: RICH30
Station ID: RICH30
Location 1: Huntington Rd, Richmond VT
Location 2: Between Grandview Dr & Pinetree Rd, 45 MPH
Direction: A to B, None Specified

File Name: RICH30
Date Printed: 7/22/2021
Start Date: 7/15/2021
End Date: 7/21/2021

7/19/2021	> 15 - 20	> 20 - 25	> 25 - 30	> 30 - 35	> 35 - 40	> 40 - 45	> 45 - 50	> 50 - 55	> 55 - 60	> 60 - 65	> 65 - 70	> 70 MPH	Total
Time	0 - 15 MPH	MPH	MPH	MPH	MPH	MPH	MPH	MPH	MPH	MPH	MPH	MPH	
12:00 AM	0	0	1	0	0	0	1	0	0	0	0	0	2
1:00	0	0	0	0	0	0	0	2	1	0	1	1	5
2:00	0	0	0	0	0	0	0	0	1	0	0	0	1
3:00	0	0	0	0	0	0	0	0	0	0	0	0	0
4:00	0	0	0	0	0	1	1	0	1	0	0	0	3
5:00	0	0	0	0	0	0	1	1	2	0	1	0	5
6:00	0	0	0	0	0	0	2	8	9	2	0	0	21
7:00	0	0	1	1	0	0	5	11	8	3	0	0	29
8:00	0	0	0	0	1	1	18	31	16	1	0	0	69
9:00	0	0	0	0	0	7	10	15	7	0	0	0	39
10:00	0	0	0	0	0	1	17	18	7	1	2	0	46
11:00	0	0	0	0	0	11	23	30	8	2	0	0	74
12:00 PM	0	0	0	1	4	7	22	18	13	1	0	0	66
1:00	0	0	0	0	1	7	34	40	14	2	0	0	98
2:00	0	1	0	0	1	8	33	30	12	3	0	0	88
3:00	0	2	0	3	3	9	29	48	23	4	2	1	125
4:00	0	0	0	0	1	6	43	61	26	3	3	0	143
5:00	0	0	0	0	1	8	39	76	36	4	2	0	167
6:00	0	0	0	0	0	6	28	41	27	7	1	0	110
7:00	0	0	0	0	0	0	6	28	25	6	0	0	65
8:00	0	0	0	0	0	3	9	24	9	2	1	0	48
9:00	0	0	0	0	0	3	18	21	12	4	0	1	59
10:00	0	0	0	0	0	2	5	10	5	3	0	0	25
11:00	0	0	0	0	0	0	2	4	2	2	0	0	10
Total	0	3	2	5	12	80	346	517	264	50	13	3	1298

Chittenden County RPC

110 W Canal St
Winooski, VT 05404

Site Code: RICH30
Station ID: RICH30
Location 1: Huntington Rd, Richmond VT
Location 2: Between Grandview Dr & Pinetree Rd, 45 MPH
Direction: A to B, None Specified

File Name: RICH30
Date Printed: 7/22/2021
Start Date: 7/15/2021
End Date: 7/21/2021

7/20/2021	> 15 - 20	> 20 - 25	> 25 - 30	> 30 - 35	> 35 - 40	> 40 - 45	> 45 - 50	> 50 - 55	> 55 - 60	> 60 - 65	> 65 - 70	> 70 MPH	Total
Time 0 - 15 MPH	MPH	MPH	MPH	MPH	MPH	MPH	MPH	MPH	MPH	MPH	MPH	MPH	
12:00 AM	0	0	0	0	0	2	1	2	2	1	0	0	8
1:00	0	0	0	0	0	0	0	2	0	1	0	0	3
2:00	0	0	0	0	0	0	0	1	0	0	0	0	1
3:00	0	0	0	0	0	0	0	2	0	0	0	0	2
4:00	0	0	0	0	0	0	0	0	1	0	0	0	1
5:00	0	0	0	0	0	2	0	2	0	0	0	0	4
6:00	0	0	0	0	0	1	6	11	4	1	3	0	26
7:00	0	0	0	0	0	2	11	14	14	4	0	0	45
8:00	0	1	0	0	0	6	18	40	11	2	0	0	79
9:00	0	0	1	0	3	7	14	15	12	3	0	1	56
10:00	1	0	2	3	0	2	18	19	6	0	0	0	51
11:00	0	0	0	0	0	7	23	29	7	1	0	0	67
12:00 PM	0	0	0	0	1	4	13	28	23	3	0	0	72
1:00	0	0	0	1	3	8	20	33	24	2	0	0	92
2:00	0	1	0	0	1	7	21	31	19	7	0	0	87
3:00	0	0	1	0	2	3	39	48	21	3	2	0	119
4:00	0	0	0	1	1	5	35	71	43	5	1	0	163
5:00	0	0	0	1	1	4	46	58	43	6	1	0	160
6:00	0	0	0	0	2	3	18	47	23	12	2	0	107
7:00	0	2	1	0	0	9	39	22	7	3	0	0	83
8:00	0	0	0	0	0	0	4	27	10	4	0	0	45
9:00	0	0	0	0	0	2	7	7	2	0	1	1	20
10:00	0	0	0	0	0	7	5	8	2	1	0	0	23
11:00	0	0	0	0	0	1	0	3	6	2	1	0	13
Total	1	4	5	6	14	80	339	518	281	62	12	2	1327

Chittenden County RPC

110 W Canal St
Winooski, VT 05404

Site Code: RICH30
Station ID: RICH30
Location 1: Huntington Rd, Richmond VT
Location 2: Between Grandview Dr & Pinetree Rd, 45 MPH
Direction: A to B, None Specified

File Name: RICH30
Date Printed: 7/22/2021
Start Date: 7/15/2021
End Date: 7/21/2021

7/21/2021	> 15 - 20	> 20 - 25	> 25 - 30	> 30 - 35	> 35 - 40	> 40 - 45	> 45 - 50	> 50 - 55	> 55 - 60	> 60 - 65	> 65 - 70	> 70 MPH	Total
Time	0 - 15 MPH	MPH	MPH	MPH	MPH	MPH	MPH	MPH	MPH	MPH	MPH	MPH	
12:00 AM	0	0	0	0	0	0	0	1	1	0	1	0	3
1:00	0	0	0	0	0	0	0	0	1	0	0	0	1
2:00	0	0	0	0	0	0	0	0	0	0	1	0	1
3:00	0	0	0	0	0	0	0	0	0	0	0	0	0
4:00	0	0	0	0	0	0	0	0	0	0	0	0	0
5:00	0	0	0	0	0	0	0	2	0	1	0	0	3
6:00	0	0	0	0	0	0	0	1	0	0	0	0	1
7:00	0	0	0	0	0	0	0	0	0	0	0	0	0
8:00	0	0	0	0	0	0	0	0	0	0	0	0	0
9:00	0	0	0	0	0	0	0	0	0	0	0	0	0
10:00	0	0	0	0	0	0	0	0	0	0	0	0	0
11:00	0	0	0	0	0	0	0	0	0	0	0	0	0
12:00 PM	0	0	0	0	0	0	0	0	0	0	0	0	0
1:00	0	0	0	0	0	0	0	0	0	0	0	0	0
2:00	0	0	0	0	0	0	0	0	0	0	0	0	0
3:00	0	0	0	0	0	0	0	0	0	0	0	0	0
4:00	0	0	0	0	0	0	0	0	0	0	0	0	0
5:00	0	0	0	0	0	0	0	0	0	0	0	0	0
6:00	0	0	0	0	0	0	0	0	0	0	0	0	0
7:00	0	0	0	0	0	0	0	0	0	0	0	0	0
8:00	0	0	0	0	0	0	0	0	0	0	0	0	0
9:00	0	0	0	0	0	0	0	0	0	0	0	0	0
10:00	0	0	0	0	0	0	0	0	0	0	0	0	0
11:00	0	0	0	0	0	0	0	0	0	0	0	0	0
Total	0	0	0	0	0	0	0	4	2	1	2	0	9
Grand Total	4	14	13	25	55	348	1675	3151	1837	413	97	18	7669

Stats	Percentile	15th	50th	85th	95th
	Speed	42.7	47.6	52.4	56.2
	Mean Speed (Average)	48.0			
	10 MPH Pace Speed	45-54			
	Number in Pace	4985			
	Percent in Pace	65.0%			
	Number > 45 MPH	5535			
	Percent > 45 MPH	72.2%			

Chittenden County RPC

110 W Canal St
Winooski, VT 05404

Site Code: RICH30
Station ID: RICH30
Location 1: Huntington Rd, Richmond VT
Location 2: Between Grandview Dr & Pinetree Rd, 45 MPH
Direction: B to A, None Specified

File Name: RICH30
Date Printed: 7/22/2021
Start Date: 7/15/2021
End Date: 7/21/2021

7/15/2021	> 15 - 20	> 20 - 25	> 25 - 30	> 30 - 35	> 35 - 40	> 40 - 45	> 45 - 50	> 50 - 55	> 55 - 60	> 60 - 65	> 65 - 70	> 70 MPH	Total
Time	0 - 15 MPH	MPH	MPH	MPH	MPH	MPH	MPH	MPH	MPH	MPH	MPH	MPH	
12:00 AM	0	0	0	0	0	0	0	0	0	0	0	0	0
1:00	0	0	0	0	0	1	0	0	0	1	0	0	2
2:00	0	0	0	0	0	2	0	1	1	0	0	0	4
3:00	0	0	0	0	0	0	1	1	0	0	0	0	2
4:00	0	0	0	0	0	2	2	1	1	4	1	0	11
5:00	0	0	0	0	0	4	8	21	5	4	0	0	42
6:00	0	0	0	1	1	2	19	38	17	1	1	0	80
7:00	0	0	1	0	2	6	33	67	21	2	0	0	133
8:00	0	0	0	1	0	3	44	53	22	1	1	0	125
9:00	0	0	1	1	1	8	40	38	18	2	0	1	110
10:00	0	0	0	0	1	7	33	34	10	1	0	1	87
11:00	0	0	0	1	0	11	43	26	3	2	0	0	86
12:00 PM	0	3	0	1	1	13	25	36	13	2	1	0	95
1:00	0	0	0	0	2	8	39	36	6	0	0	0	91
2:00	0	0	2	0	0	7	39	26	9	2	0	0	85
3:00	0	1	0	0	0	2	42	48	17	3	1	0	115
4:00	0	0	0	0	1	3	34	62	11	5	0	0	116
5:00	0	0	0	0	0	18	36	35	6	2	0	0	97
6:00	0	0	0	0	0	16	39	41	11	1	1	0	109
7:00	0	0	1	0	0	10	30	29	10	0	0	0	80
8:00	0	0	0	0	2	12	17	16	1	1	0	0	49
9:00	0	0	0	1	0	7	22	13	2	1	0	0	46
10:00	0	0	0	0	0	1	4	4	0	0	0	0	9
11:00	0	0	0	0	0	0	2	2	0	1	0	0	5
Total	0	4	5	6	11	143	552	628	184	36	6	2	1579

Chittenden County RPC

110 W Canal St
Winooski, VT 05404

Site Code: RICH30
Station ID: RICH30
Location 1: Huntington Rd, Richmond VT
Location 2: Between Grandview Dr & Pinetree Rd, 45 MPH
Direction: B to A, None Specified

File Name: RICH30
Date Printed: 7/22/2021
Start Date: 7/15/2021
End Date: 7/21/2021

7/16/2021		> 15 - 20	> 20 - 25	> 25 - 30	> 30 - 35	> 35 - 40	> 40 - 45	> 45 - 50	> 50 - 55	> 55 - 60	> 60 - 65	> 65 - 70	> 70 MPH	Total
Time	0 - 15 MPH	MPH	MPH	MPH	MPH	MPH	MPH	MPH	MPH	MPH	MPH	MPH		
12:00 AM	0	0	0	0	0	0	0	0	0	1	0	0	0	1
1:00	0	0	0	0	0	0	1	1	0	0	0	0	0	2
2:00	0	0	0	0	1	0	1	0	1	0	0	0	0	3
3:00	0	0	0	0	0	0	1	2	0	0	0	0	0	3
4:00	0	0	0	0	0	1	5	4	0	1	1	0	0	12
5:00	0	0	0	0	1	3	13	10	2	2	0	1	0	32
6:00	0	0	0	0	0	6	33	35	15	1	0	0	0	90
7:00	0	0	0	1	3	13	38	43	13	3	0	0	0	114
8:00	0	0	1	0	2	16	45	42	14	2	0	0	0	122
9:00	0	0	0	0	2	7	36	36	7	1	1	0	0	90
10:00	0	0	0	0	1	3	43	42	5	0	0	0	0	94
11:00	0	0	0	0	1	16	40	32	11	1	0	0	0	101
12:00 PM	0	0	0	0	3	15	38	26	7	1	0	0	1	91
1:00	0	0	0	1	0	9	41	26	4	0	0	0	0	81
2:00	0	0	1	1	1	13	33	25	5	2	0	0	0	81
3:00	0	0	0	0	1	10	52	42	12	1	0	0	1	119
4:00	0	0	2	1	0	10	42	38	11	4	0	0	0	108
5:00	0	0	0	0	3	6	28	30	13	2	1	0	1	84
6:00	0	0	1	1	1	6	24	26	10	3	0	0	0	72
7:00	0	0	0	0	1	2	15	16	2	0	0	0	0	36
8:00	0	0	0	0	0	4	12	13	2	0	0	0	2	33
9:00	0	0	0	0	1	8	16	12	0	0	0	0	0	37
10:00	0	0	0	0	1	7	8	2	0	0	0	0	0	18
11:00	0	0	0	0	0	0	2	4	3	3	0	0	0	12
Total	0	0	5	5	23	155	567	507	137	28	3	1	5	1436

Chittenden County RPC

110 W Canal St
Winooski, VT 05404

Site Code: RICH30
Station ID: RICH30
Location 1: Huntington Rd, Richmond VT
Location 2: Between Grandview Dr & Pinetree Rd, 45 MPH
Direction: B to A, None Specified

File Name: RICH30
Date Printed: 7/22/2021
Start Date: 7/15/2021
End Date: 7/21/2021

7/17/2021		> 15 - 20	> 20 - 25	> 25 - 30	> 30 - 35	> 35 - 40	> 40 - 45	> 45 - 50	> 50 - 55	> 55 - 60	> 60 - 65	> 65 - 70	> 70 MPH	Total
Time	0 - 15 MPH	MPH	MPH	MPH	MPH	MPH	MPH	MPH	MPH	MPH	MPH	MPH	MPH	
12:00 AM	0	0	0	0	0	0	0	1	0	1	1	1	0	4
1:00	0	0	0	0	0	0	1	2	1	3	0	1	0	9
2:00	0	0	0	0	0	0	1	1	1	0	0	0	0	3
3:00	0	0	0	0	1	0	2	0	0	0	0	0	1	4
4:00	0	0	0	0	0	1	3	2	1	0	1	0	0	8
5:00	0	0	0	0	0	1	2	11	2	0	0	0	0	16
6:00	0	0	0	0	0	1	8	9	5	2	0	0	0	25
7:00	0	0	0	0	2	8	16	16	10	1	1	0	0	54
8:00	0	1	0	0	0	2	33	38	11	1	1	0	0	87
9:00	0	0	0	1	2	8	31	36	8	2	0	0	0	88
10:00	0	0	1	1	0	12	41	30	12	4	0	0	0	101
11:00	0	0	0	0	0	8	42	31	16	4	0	1	0	102
12:00 PM	0	0	0	1	10	12	57	44	6	0	0	0	0	130
1:00	0	0	1	1	1	8	35	26	8	0	1	0	0	81
2:00	0	1	0	0	4	14	31	21	7	1	0	0	0	79
3:00	0	0	1	0	1	11	37	22	3	2	2	0	0	79
4:00	0	0	0	1	1	2	35	35	10	3	0	0	0	87
5:00	0	0	0	0	1	7	27	15	6	1	0	0	0	57
6:00	0	0	0	0	0	3	20	23	4	1	0	0	0	51
7:00	0	0	0	0	0	10	12	17	3	2	0	0	0	44
8:00	0	0	0	0	0	6	11	4	2	1	0	0	0	24
9:00	0	0	0	0	1	6	11	3	4	2	2	0	0	29
10:00	0	0	0	1	3	8	5	4	4	0	0	0	0	25
11:00	0	0	0	0	2	5	4	3	0	0	0	0	0	14
Total	0	2	3	6	29	135	466	393	125	28	10	2	2	1201

Chittenden County RPC

110 W Canal St
Winooski, VT 05404

Site Code: RICH30
Station ID: RICH30
Location 1: Huntington Rd, Richmond VT
Location 2: Between Grandview Dr & Pinetree Rd, 45 MPH
Direction: B to A, None Specified

File Name: RICH30
Date Printed: 7/22/2021
Start Date: 7/15/2021
End Date: 7/21/2021

7/18/2021	> 15 - 20	> 20 - 25	> 25 - 30	> 30 - 35	> 35 - 40	> 40 - 45	> 45 - 50	> 50 - 55	> 55 - 60	> 60 - 65	> 65 - 70	> 70 MPH	Total
Time 0 - 15 MPH	MPH	MPH	MPH	MPH	MPH	MPH	MPH	MPH	MPH	MPH	MPH	MPH	
12:00 AM	0	0	0	0	0	1	3	1	0	0	0	0	5
1:00	0	0	0	0	0	0	2	0	0	1	0	0	3
2:00	0	0	0	0	0	0	0	0	0	0	0	0	0
3:00	0	0	0	0	1	1	1	0	0	0	0	0	3
4:00	0	0	0	0	0	0	3	1	0	0	0	1	5
5:00	0	0	0	0	0	3	1	2	1	0	0	0	7
6:00	0	0	0	0	0	3	4	12	2	0	0	0	21
7:00	0	0	0	0	0	3	14	12	5	0	0	0	34
8:00	0	0	0	0	0	4	19	19	2	1	1	0	46
9:00	0	0	1	0	1	4	28	24	9	0	0	0	67
10:00	0	0	0	1	1	3	34	27	10	1	1	0	78
11:00	0	0	0	0	0	2	38	39	7	0	0	0	86
12:00 PM	0	0	0	0	1	1	22	31	7	0	0	0	62
1:00	0	0	0	0	0	13	23	23	3	3	0	0	65
2:00	0	0	1	0	0	2	31	31	7	0	0	0	72
3:00	0	0	0	0	2	5	34	17	9	1	0	0	68
4:00	0	1	0	0	2	7	43	23	5	2	1	0	84
5:00	0	0	0	0	0	2	17	19	11	2	0	0	51
6:00	0	0	0	0	1	2	17	21	6	0	0	0	47
7:00	0	0	0	1	2	4	5	9	3	1	0	0	25
8:00	0	0	0	0	1	5	6	7	2	0	0	0	21
9:00	0	0	0	0	0	2	1	1	2	0	0	0	6
10:00	0	0	0	0	0	0	0	0	1	1	0	0	2
11:00	0	0	0	0	0	0	0	2	0	1	0	0	3
Total	0	1	2	2	12	67	346	321	92	14	3	1	861

Chittenden County RPC

110 W Canal St
Winooski, VT 05404

Site Code: RICH30
Station ID: RICH30
Location 1: Huntington Rd, Richmond VT
Location 2: Between Grandview Dr & Pinetree Rd, 45 MPH
Direction: B to A, None Specified

File Name: RICH30
Date Printed: 7/22/2021
Start Date: 7/15/2021
End Date: 7/21/2021

7/19/2021	> 15 - 20	> 20 - 25	> 25 - 30	> 30 - 35	> 35 - 40	> 40 - 45	> 45 - 50	> 50 - 55	> 55 - 60	> 60 - 65	> 65 - 70	> 70 MPH	Total
Time 0 - 15 MPH	MPH	MPH	MPH	MPH	MPH	MPH	MPH	MPH	MPH	MPH	MPH	MPH	
12:00 AM	0	0	0	0	0	1	0	1	0	1	0	0	3
1:00	0	0	0	0	0	0	1	0	0	0	0	0	1
2:00	0	0	0	0	0	2	0	2	0	0	0	0	4
3:00	0	0	0	0	0	0	1	1	1	0	0	0	3
4:00	0	0	0	0	0	2	4	3	2	0	0	0	11
5:00	0	0	0	0	1	6	14	14	4	2	1	0	42
6:00	0	0	0	1	1	3	17	31	22	1	0	0	76
7:00	0	0	0	0	2	16	62	50	9	2	0	0	141
8:00	0	1	0	0	0	10	46	33	14	4	1	0	109
9:00	0	0	0	0	6	15	43	33	5	1	0	0	103
10:00	0	0	0	0	1	10	30	28	4	0	1	0	74
11:00	0	0	0	1	1	3	25	33	2	2	0	1	68
12:00 PM	0	1	0	0	2	18	30	30	7	0	0	0	88
1:00	0	0	0	0	1	6	28	34	10	2	0	0	81
2:00	0	0	0	0	0	8	30	29	7	0	1	0	75
3:00	0	0	0	1	1	5	25	38	8	3	0	0	81
4:00	0	0	0	0	2	13	46	35	8	3	1	0	108
5:00	0	0	0	0	0	9	29	30	15	1	0	0	85
6:00	0	0	0	0	0	6	15	28	12	1	0	0	62
7:00	0	0	0	0	0	4	13	6	5	1	0	0	29
8:00	0	0	0	2	0	3	7	12	1	1	0	0	26
9:00	0	0	0	0	1	1	3	7	0	0	0	0	12
10:00	0	0	0	1	1	2	4	2	0	1	0	0	11
11:00	0	0	0	0	0	0	0	1	1	0	0	0	2
Total	0	2	0	6	20	143	473	481	137	26	5	1	1295

Chittenden County RPC

110 W Canal St
Winooski, VT 05404

Site Code: RICH30
Station ID: RICH30
Location 1: Huntington Rd, Richmond VT
Location 2: Between Grandview Dr & Pinetree Rd, 45 MPH
Direction: B to A, None Specified

File Name: RICH30
Date Printed: 7/22/2021
Start Date: 7/15/2021
End Date: 7/21/2021

7/20/2021		> 15 - 20	> 20 - 25	> 25 - 30	> 30 - 35	> 35 - 40	> 40 - 45	> 45 - 50	> 50 - 55	> 55 - 60	> 60 - 65	> 65 - 70	> 70 MPH	Total
Time	0 - 15 MPH	MPH	MPH	MPH	MPH	MPH	MPH	MPH	MPH	MPH	MPH	MPH	MPH	
12:00 AM	0	0	0	0	0	0	2	0	1	0	1	0	0	4
1:00	0	0	0	0	0	0	0	0	0	0	0	0	0	0
2:00	0	0	0	0	1	1	1	0	1	0	0	0	0	4
3:00	0	0	0	0	0	0	0	2	0	0	0	0	0	2
4:00	0	0	0	0	0	3	1	3	4	1	1	1	0	14
5:00	0	0	0	0	0	4	14	19	4	2	1	0	0	44
6:00	0	0	0	2	0	1	23	47	16	1	2	0	0	92
7:00	0	0	0	0	1	12	56	64	17	2	0	0	0	152
8:00	0	0	1	0	1	8	54	48	12	3	0	0	0	127
9:00	0	1	1	0	1	9	54	43	6	0	0	0	0	115
10:00	0	0	0	0	2	14	39	23	4	1	0	1	0	84
11:00	0	0	0	0	1	11	36	25	7	1	0	0	0	81
12:00 PM	0	0	0	1	0	9	30	39	8	2	0	0	0	89
1:00	0	0	0	0	0	9	28	28	7	2	0	0	0	74
2:00	0	0	0	0	1	7	39	32	5	0	0	0	1	85
3:00	0	0	0	0	1	10	37	42	12	0	0	0	1	103
4:00	0	2	0	0	1	7	46	26	16	2	1	0	0	101
5:00	0	0	0	0	2	3	43	32	11	1	0	0	0	92
6:00	0	0	0	0	3	9	18	27	8	0	1	0	0	66
7:00	0	0	0	2	10	10	15	10	0	0	0	0	0	47
8:00	0	0	0	0	0	2	3	1	0	0	0	0	0	6
9:00	0	0	0	0	0	0	2	0	1	1	0	0	0	4
10:00	0	0	0	0	0	1	4	1	0	1	0	0	0	7
11:00	0	0	0	0	0	0	0	1	0	0	0	0	0	1
Total	0	3	2	5	25	130	545	513	140	20	7	2	2	1394

Chittenden County RPC

110 W Canal St
Winooski, VT 05404

Site Code: RICH30
Station ID: RICH30
Location 1: Huntington Rd, Richmond VT
Location 2: Between Grandview Dr & Pinetree Rd, 45 MPH
Direction: B to A, None Specified

File Name: RICH30
Date Printed: 7/22/2021
Start Date: 7/15/2021
End Date: 7/21/2021

7/21/2021	> 15 - 20	> 20 - 25	> 25 - 30	> 30 - 35	> 35 - 40	> 40 - 45	> 45 - 50	> 50 - 55	> 55 - 60	> 60 - 65	> 65 - 70	> 70 MPH	Total
Time	0 - 15 MPH	MPH	MPH	MPH	MPH	MPH	MPH	MPH	MPH	MPH	MPH	MPH	
12:00 AM	0	0	0	0	0	0	0	0	0	0	0	0	0
1:00	0	0	0	0	0	0	0	0	0	0	0	0	0
2:00	0	0	0	0	0	0	0	0	0	0	0	0	0
3:00	0	0	0	0	0	0	0	0	0	0	0	0	0
4:00	0	0	0	0	0	0	0	0	0	0	0	0	0
5:00	1	0	0	0	0	0	0	2	0	0	0	0	3
6:00	0	0	0	0	0	0	1	0	0	0	0	0	1
7:00	0	0	0	0	0	0	0	0	0	0	0	0	0
8:00	0	0	0	0	0	0	0	0	0	0	0	0	0
9:00	0	0	0	0	0	0	0	0	0	0	0	0	0
10:00	0	0	0	0	0	0	0	0	0	0	0	0	0
11:00	0	0	0	0	0	0	0	0	0	0	0	0	0
12:00 PM	0	0	0	0	0	0	0	0	0	0	0	0	0
1:00	0	0	0	0	0	0	0	0	0	0	0	0	0
2:00	0	0	0	0	0	0	0	0	0	0	0	0	0
3:00	0	0	0	0	0	0	0	0	0	0	0	0	0
4:00	0	0	0	0	0	0	0	0	0	0	0	0	0
5:00	0	0	0	0	0	0	0	0	0	0	0	0	0
6:00	0	0	0	0	0	0	0	0	0	0	0	0	0
7:00	0	0	0	0	0	0	0	0	0	0	0	0	0
8:00	0	0	0	0	0	0	0	0	0	0	0	0	0
9:00	0	0	0	0	0	0	0	0	0	0	0	0	0
10:00	0	0	0	0	0	0	0	0	0	0	0	0	0
11:00	0	0	0	0	0	0	0	0	0	0	0	0	0
Total	1	0	0	0	0	0	1	2	0	0	0	0	4
Grand Total	1	12	17	30	120	773	2950	2845	815	152	34	9	7770

Stats	Percentile	15th	50th	85th	95th
	Speed	40.5	44.9	49.5	53
	Mean Speed (Average)	45.2			
	10 MPH Pace Speed	40-49			
	Number in Pace	5754			
	Percent in Pace	74.1%			
	Number > 45 MPH	3867			
	Percent > 45 MPH	49.8%			

Chittenden County RPC

110 W Canal St
Winooski, VT 05404

Site Code: RICH30
Station ID: RICH30
Location 1: Huntington Rd, Richmond VT
Location 2: Between Grandview Dr & Pinetree Rd, 45 MPH
Direction: Combined

File Name: RICH30
Date Printed: 7/22/2021
Start Date: 7/15/2021
End Date: 7/21/2021

7/15/2021	> 15 - 20	> 20 - 25	> 25 - 30	> 30 - 35	> 35 - 40	> 40 - 45	> 45 - 50	> 50 - 55	> 55 - 60	> 60 - 65	> 65 - 70	> 70 MPH	Total
Time 0 - 15 MPH	MPH	MPH	MPH	MPH	MPH	MPH	MPH	MPH	MPH	MPH	MPH	MPH	
12:00 AM	0	0	0	0	0	0	3	2	2	1	0	0	8
1:00	0	0	0	0	0	2	0	0	0	1	1	0	4
2:00	0	0	0	0	0	2	0	2	2	0	0	0	6
3:00	0	0	0	0	0	0	1	2	0	0	0	0	3
4:00	0	0	0	0	0	2	2	1	1	5	1	0	12
5:00	0	0	0	1	0	4	8	23	5	5	0	0	46
6:00	0	0	0	1	1	3	21	45	28	3	2	0	104
7:00	0	0	1	0	2	9	42	89	31	4	2	0	181
8:00	0	0	1	1	0	5	51	84	42	7	2	0	193
9:00	0	0	1	1	2	10	52	64	38	5	1	1	175
10:00	0	0	0	0	2	8	52	73	24	9	0	1	169
11:00	0	0	0	1	2	15	62	54	18	6	2	0	160
12:00 PM	1	4	0	2	2	15	39	74	31	6	1	0	175
1:00	0	1	0	0	3	14	78	81	28	7	0	0	213
2:00	0	0	2	0	2	16	58	62	29	6	0	1	176
3:00	0	1	0	0	1	7	72	114	46	9	1	1	253
4:00	0	0	0	0	2	9	76	148	83	12	3	0	333
5:00	0	1	0	0	0	24	68	132	53	8	2	0	289
6:00	0	0	0	0	0	19	55	98	40	8	5	0	225
7:00	0	0	1	0	0	11	40	62	25	5	0	0	144
8:00	0	1	0	0	2	14	33	45	16	8	1	0	120
9:00	0	0	0	1	0	7	35	38	19	3	0	0	103
10:00	0	0	0	0	0	1	14	15	7	1	0	0	38
11:00	0	0	0	0	0	1	4	5	4	2	2	0	19
Total	1	8	6	8	21	198	866	1313	572	121	26	4	3149

Chittenden County RPC

110 W Canal St
Winooski, VT 05404

Site Code: RICH30
Station ID: RICH30
Location 1: Huntington Rd, Richmond VT
Location 2: Between Grandview Dr & Pinetree Rd, 45 MPH
Direction: Combined

File Name: RICH30
Date Printed: 7/22/2021
Start Date: 7/15/2021
End Date: 7/21/2021

7/16/2021	> 15 - 20	> 20 - 25	> 25 - 30	> 30 - 35	> 35 - 40	> 40 - 45	> 45 - 50	> 50 - 55	> 55 - 60	> 60 - 65	> 65 - 70	> 70 MPH	Total
Time 0 - 15 MPH	MPH	MPH	MPH	MPH	MPH	MPH	MPH	MPH	MPH	MPH	MPH	MPH	
12:00 AM	0	1	0	0	0	0	2	1	1	2	1	0	8
1:00	0	0	0	0	0	0	1	1	0	1	1	0	4
2:00	0	0	0	0	1	0	1	0	3	0	0	0	5
3:00	0	0	0	0	0	0	1	2	0	0	0	0	3
4:00	0	0	0	0	0	1	5	4	1	1	1	0	13
5:00	0	0	0	0	1	3	15	12	2	2	0	1	36
6:00	0	0	0	0	0	7	35	42	18	3	2	0	107
7:00	0	0	0	2	4	15	46	49	26	3	2	0	147
8:00	0	0	1	0	2	22	54	66	30	8	1	0	184
9:00	0	0	0	2	2	10	51	65	20	2	1	0	153
10:00	0	0	0	0	1	5	51	65	18	3	2	0	145
11:00	0	0	0	0	3	23	61	54	28	5	0	0	174
12:00 PM	0	0	0	0	3	20	70	57	26	4	2	0	183
1:00	0	0	0	1	4	11	59	68	21	4	1	0	169
2:00	0	1	1	1	5	19	48	56	27	10	2	0	170
3:00	0	0	0	1	1	16	85	87	47	9	1	1	250
4:00	0	0	2	2	1	14	77	111	44	13	0	0	264
5:00	0	0	1	0	3	9	54	113	63	7	5	0	257
6:00	0	0	1	1	1	11	45	84	45	10	2	0	202
7:00	0	0	0	1	2	4	28	44	24	4	3	0	110
8:00	0	0	0	0	0	5	22	29	18	6	0	2	84
9:00	0	0	1	0	1	8	32	43	17	2	1	0	105
10:00	0	0	0	0	1	7	15	12	9	6	1	0	51
11:00	0	0	0	0	0	0	9	15	14	4	0	0	42
Total	0	2	7	11	36	210	867	1080	502	109	29	4	2866

Chittenden County RPC

110 W Canal St
Winooski, VT 05404

Site Code: RICH30
Station ID: RICH30
Location 1: Huntington Rd, Richmond VT
Location 2: Between Grandview Dr & Pinetree Rd, 45 MPH
Direction: Combined

File Name: RICH30
Date Printed: 7/22/2021
Start Date: 7/15/2021
End Date: 7/21/2021

7/17/2021	> 15 - 20	> 20 - 25	> 25 - 30	> 30 - 35	> 35 - 40	> 40 - 45	> 45 - 50	> 50 - 55	> 55 - 60	> 60 - 65	> 65 - 70	> 70 MPH	Total
Time 0 - 15 MPH	MPH	MPH	MPH	MPH	MPH	MPH	MPH	MPH	MPH	MPH	MPH	MPH	
12:00 AM	0	0	0	0	0	0	1	3	3	2	1	0	10
1:00	0	0	0	0	0	1	3	1	3	0	1	0	10
2:00	0	0	0	0	0	1	2	1	3	0	0	0	7
3:00	0	0	0	0	1	1	3	0	0	0	0	0	7
4:00	0	0	0	0	0	1	3	2	2	2	1	0	11
5:00	0	0	0	0	0	1	2	11	3	0	0	0	17
6:00	0	0	0	0	0	1	10	15	9	2	0	0	37
7:00	0	0	0	0	2	9	19	25	13	1	1	0	70
8:00	0	1	0	0	0	3	40	52	24	4	1	2	127
9:00	0	0	0	1	3	10	46	73	20	5	0	0	158
10:00	1	0	1	1	0	15	60	61	26	6	3	0	174
11:00	0	0	0	0	0	13	58	74	40	12	0	1	198
12:00 PM	0	0	0	1	10	23	77	94	27	3	0	0	235
1:00	1	0	1	2	2	18	64	73	34	7	2	1	205
2:00	0	1	0	0	4	18	50	69	34	8	1	0	186
3:00	0	0	1	0	1	13	62	71	34	8	4	0	194
4:00	0	0	1	3	1	4	46	79	43	10	2	0	189
5:00	0	0	0	0	2	11	38	47	21	3	1	0	123
6:00	0	0	0	1	0	4	27	48	19	3	0	0	103
7:00	0	0	0	0	0	12	24	34	16	6	1	0	93
8:00	0	0	0	0	0	7	27	31	9	5	0	0	79
9:00	0	0	0	0	1	12	21	15	12	3	3	0	68
10:00	0	0	0	1	3	9	9	12	9	4	0	0	47
11:00	0	0	0	0	2	6	6	5	0	1	0	0	20
Total	2	2	4	10	32	193	697	894	404	96	23	5	2368

Chittenden County RPC

110 W Canal St
Winooski, VT 05404

Site Code: RICH30
Station ID: RICH30
Location 1: Huntington Rd, Richmond VT
Location 2: Between Grandview Dr & Pinetree Rd, 45 MPH
Direction: Combined

File Name: RICH30
Date Printed: 7/22/2021
Start Date: 7/15/2021
End Date: 7/21/2021

7/18/2021	> 15 - 20	> 20 - 25	> 25 - 30	> 30 - 35	> 35 - 40	> 40 - 45	> 45 - 50	> 50 - 55	> 55 - 60	> 60 - 65	> 65 - 70	> 70 MPH	Total
Time 0 - 15 MPH	MPH	MPH	MPH	MPH	MPH	MPH	MPH	MPH	MPH	MPH	MPH		
12:00 AM	0	0	0	0	1	1	5	2	1	0	0	0	10
1:00	0	1	0	0	0	0	2	1	2	2	0	0	9
2:00	0	0	0	0	0	1	1	0	0	2	0	0	4
3:00	0	0	0	0	1	1	1	0	1	0	0	0	4
4:00	0	0	0	0	0	0	3	1	1	0	0	1	6
5:00	0	0	0	0	0	3	1	2	1	0	0	0	7
6:00	0	0	0	0	0	3	6	13	3	0	0	0	25
7:00	0	0	0	0	0	3	16	16	7	0	0	0	42
8:00	0	0	0	0	0	6	21	26	10	1	1	0	65
9:00	0	0	1	0	1	5	33	38	18	1	0	0	97
10:00	0	0	0	1	1	4	42	45	20	4	2	1	120
11:00	0	0	0	0	2	2	49	67	26	2	0	0	148
12:00 PM	0	0	0	1	1	4	33	69	33	6	0	1	148
1:00	0	0	0	0	0	14	29	55	27	8	2	0	135
2:00	0	0	1	0	0	6	42	67	28	8	0	0	152
3:00	0	0	0	0	2	7	42	43	31	5	0	0	130
4:00	0	1	0	1	2	8	63	52	38	8	1	0	175
5:00	0	0	0	0	0	3	27	47	37	14	1	1	130
6:00	0	0	2	0	1	3	25	50	18	5	0	1	105
7:00	0	0	0	1	2	5	23	43	19	4	3	1	101
8:00	0	0	0	0	1	5	18	18	13	4	1	0	60
9:00	0	0	0	0	0	3	7	12	8	2	2	0	34
10:00	0	0	0	0	0	0	2	4	4	2	0	0	12
11:00	0	0	0	0	0	0	0	3	4	2	1	0	10
Total	0	2	4	4	15	87	491	674	350	80	14	6	1729

Chittenden County RPC

110 W Canal St
Winooski, VT 05404

Site Code: RICH30
Station ID: RICH30
Location 1: Huntington Rd, Richmond VT
Location 2: Between Grandview Dr & Pinetree Rd, 45 MPH
Direction: Combined

File Name: RICH30
Date Printed: 7/22/2021
Start Date: 7/15/2021
End Date: 7/21/2021

7/19/2021	> 15 - 20	> 20 - 25	> 25 - 30	> 30 - 35	> 35 - 40	> 40 - 45	> 45 - 50	> 50 - 55	> 55 - 60	> 60 - 65	> 65 - 70	> 70 MPH	Total
Time	0 - 15 MPH	MPH	MPH	MPH	MPH	MPH	MPH	MPH	MPH	MPH	MPH	MPH	
12:00 AM	0	0	1	0	0	1	1	1	0	1	0	0	5
1:00	0	0	0	0	0	0	1	2	1	0	1	1	6
2:00	0	0	0	0	0	2	0	2	1	0	0	0	5
3:00	0	0	0	0	0	0	1	1	1	0	0	0	3
4:00	0	0	0	0	0	3	5	3	3	0	0	0	14
5:00	0	0	0	0	1	6	15	15	6	2	2	0	47
6:00	0	0	0	1	1	3	19	39	31	3	0	0	97
7:00	0	0	1	1	2	16	67	61	17	5	0	0	170
8:00	0	1	0	0	1	11	64	64	30	5	1	0	178
9:00	0	0	0	0	6	22	53	48	12	1	0	0	142
10:00	0	0	0	0	1	11	47	46	11	1	3	0	120
11:00	0	0	0	1	1	14	48	63	10	4	0	1	142
12:00 PM	0	1	0	1	6	25	52	48	20	1	0	0	154
1:00	0	0	0	0	2	13	62	74	24	4	0	0	179
2:00	0	1	0	0	1	16	63	59	19	3	1	0	163
3:00	0	2	0	4	4	14	54	86	31	7	2	1	206
4:00	0	0	0	0	3	19	89	96	34	6	4	0	251
5:00	0	0	0	0	1	17	68	106	51	5	2	0	252
6:00	0	0	0	0	0	12	43	69	39	8	1	0	172
7:00	0	0	0	0	0	4	19	34	30	7	0	0	94
8:00	0	0	0	2	0	6	16	36	10	3	1	0	74
9:00	0	0	0	0	1	4	21	28	12	4	0	1	71
10:00	0	0	0	1	1	4	9	12	5	4	0	0	36
11:00	0	0	0	0	0	0	2	5	3	2	0	0	12
Total	0	5	2	11	32	223	819	998	401	76	18	4	2593

Chittenden County RPC

110 W Canal St
Winooski, VT 05404

Site Code: RICH30
Station ID: RICH30
Location 1: Huntington Rd, Richmond VT
Location 2: Between Grandview Dr & Pinetree Rd, 45 MPH
Direction: Combined

File Name: RICH30
Date Printed: 7/22/2021
Start Date: 7/15/2021
End Date: 7/21/2021

7/20/2021	> 15 - 20	> 20 - 25	> 25 - 30	> 30 - 35	> 35 - 40	> 40 - 45	> 45 - 50	> 50 - 55	> 55 - 60	> 60 - 65	> 65 - 70	> 70 MPH	Total
Time	0 - 15 MPH	MPH	MPH	MPH	MPH	MPH	MPH	MPH	MPH	MPH	MPH	MPH	
12:00 AM	0	0	0	0	0	4	1	3	2	2	0	0	12
1:00	0	0	0	0	0	0	2	0	1	0	0	0	3
2:00	0	0	0	0	1	1	1	2	0	0	0	0	5
3:00	0	0	0	0	0	0	4	0	0	0	0	0	4
4:00	0	0	0	0	0	3	1	3	5	1	1	1	15
5:00	0	0	0	0	0	6	14	21	4	2	1	0	48
6:00	0	0	0	2	0	2	29	58	20	2	5	0	118
7:00	0	0	0	0	1	14	67	78	31	6	0	0	197
8:00	0	1	1	0	1	14	72	88	23	5	0	0	206
9:00	0	1	2	0	4	16	68	58	18	3	0	1	171
10:00	1	0	2	3	2	16	57	42	10	1	0	1	135
11:00	0	0	0	0	1	18	59	54	14	2	0	0	148
12:00 PM	0	0	0	1	1	13	43	67	31	5	0	0	161
1:00	0	0	0	1	3	17	48	61	31	4	0	0	166
2:00	0	1	0	0	2	14	60	63	24	7	0	0	172
3:00	0	0	1	0	3	13	76	90	33	3	2	0	222
4:00	0	2	0	1	2	12	81	97	59	7	2	0	264
5:00	0	0	0	1	3	7	89	90	54	7	1	0	252
6:00	0	0	0	0	5	12	36	74	31	12	3	0	173
7:00	0	2	1	2	10	19	54	32	7	3	0	0	130
8:00	0	0	0	0	0	2	7	28	10	4	0	0	51
9:00	0	0	0	0	0	2	9	7	3	1	1	1	24
10:00	0	0	0	0	0	8	9	9	2	2	0	0	30
11:00	0	0	0	0	0	1	0	4	6	2	1	0	14
Total	1	7	7	11	39	210	884	1031	421	82	19	4	2721

Chittenden County RPC

110 W Canal St
Winooski, VT 05404

Site Code: RICH30
Station ID: RICH30
Location 1: Huntington Rd, Richmond VT
Location 2: Between Grandview Dr & Pinetree Rd, 45 MPH
Direction: Combined

File Name: RICH30
Date Printed: 7/22/2021
Start Date: 7/15/2021
End Date: 7/21/2021

7/21/2021	> 15 - 20	> 20 - 25	> 25 - 30	> 30 - 35	> 35 - 40	> 40 - 45	> 45 - 50	> 50 - 55	> 55 - 60	> 60 - 65	> 65 - 70	> 70 MPH	Total	
Time	0 - 15 MPH	MPH	MPH	MPH	MPH	MPH	MPH	MPH	MPH	MPH	MPH	MPH		
12:00 AM	0	0	0	0	0	0	0	1	1	0	1	0	3	
1:00	0	0	0	0	0	0	0	0	1	0	0	0	1	
2:00	0	0	0	0	0	0	0	0	0	0	1	0	1	
3:00	0	0	0	0	0	0	0	0	0	0	0	0	0	
4:00	0	0	0	0	0	0	0	0	0	0	0	0	0	
5:00	1	0	0	0	0	0	0	4	0	1	0	0	6	
6:00	0	0	0	0	0	0	1	1	0	0	0	0	2	
7:00	0	0	0	0	0	0	0	0	0	0	0	0	0	
8:00	0	0	0	0	0	0	0	0	0	0	0	0	0	
9:00	0	0	0	0	0	0	0	0	0	0	0	0	0	
10:00	0	0	0	0	0	0	0	0	0	0	0	0	0	
11:00	0	0	0	0	0	0	0	0	0	0	0	0	0	
12:00 PM	0	0	0	0	0	0	0	0	0	0	0	0	0	
1:00	0	0	0	0	0	0	0	0	0	0	0	0	0	
2:00	0	0	0	0	0	0	0	0	0	0	0	0	0	
3:00	0	0	0	0	0	0	0	0	0	0	0	0	0	
4:00	0	0	0	0	0	0	0	0	0	0	0	0	0	
5:00	0	0	0	0	0	0	0	0	0	0	0	0	0	
6:00	0	0	0	0	0	0	0	0	0	0	0	0	0	
7:00	0	0	0	0	0	0	0	0	0	0	0	0	0	
8:00	0	0	0	0	0	0	0	0	0	0	0	0	0	
9:00	0	0	0	0	0	0	0	0	0	0	0	0	0	
10:00	0	0	0	0	0	0	0	0	0	0	0	0	0	
11:00	0	0	0	0	0	0	0	0	0	0	0	0	0	
Total	1	0	0	0	0	0	1	6	2	1	2	0	13	
Grand Total	5	26	30	55	175	1121	4625	5996	2652	565	131	27	31	15439

Stats	Percentile	15th	50th	85th	95th
	Speed	41.4	46.2	51.2	54.8
	Mean Speed (Average)	46.6			
	10 MPH Pace Speed	40-49			
	Number in Pace	10524			
	Percent in Pace	68.2%			
	Number > 45 MPH	9402			
	Percent > 45 MPH	60.9%			

Chittenden County RPC

110 W Canal St
Winooski, VT 05404

Site Code: RICH21
Station ID:
Location 1: Kenyon Rd, Richmond VT
Location 2: On Utility pole, 35 MPH
Direction: South, A to B

File Name: RICH21_TRAX
Date Printed: 6/28/2021
Start Date: 6/17/2021
End Date: 6/21/2021

6/17/2021	> 15 - 20	> 20 - 25	> 25 - 30	> 30 - 35	> 35 - 40	> 40 - 45	> 45 - 50	> 50 - 55	> 55 - 60	> 60 - 65	> 65 - 70	> 70 MPH	Total
Time	0 - 15 MPH	MPH	MPH	MPH	MPH	MPH	MPH	MPH	MPH	MPH	MPH	MPH	
12:00 AM	*	*	*	*	*	*	*	*	*	*	*	*	0
1:00	*	*	*	*	*	*	*	*	*	*	*	*	0
2:00	*	*	*	*	*	*	*	*	*	*	*	*	0
3:00	*	*	*	*	*	*	*	*	*	*	*	*	0
4:00	*	*	*	*	*	*	*	*	*	*	*	*	0
5:00	*	*	*	*	*	*	*	*	*	*	*	*	0
6:00	*	*	*	*	*	*	*	*	*	*	*	*	0
7:00	*	*	*	*	*	*	*	*	*	*	*	*	0
8:00	*	*	*	*	*	*	*	*	*	*	*	*	0
9:00	*	*	*	*	*	*	*	*	*	*	*	*	0
10:00	*	*	*	*	*	*	*	*	*	*	*	*	0
11:00	*	*	*	*	*	*	*	*	*	*	*	*	0
12:00 PM	*	*	*	*	*	*	*	*	*	*	*	*	0
1:00	*	*	*	*	*	*	*	*	*	*	*	*	0
2:00	*	*	*	*	*	*	*	*	*	*	*	*	0
3:00	1	0	4	2	12	7	4	0	0	0	0	0	30
4:00	2	0	1	12	14	3	0	0	0	0	0	0	34
5:00	2	1	0	10	22	6	1	0	0	0	0	0	44
6:00	0	0	1	5	9	4	0	0	0	0	0	0	19
7:00	0	0	1	4	5	0	1	0	0	0	0	1	13
8:00	2	0	3	4	3	0	0	0	0	0	0	1	13
9:00	1	0	2	1	1	1	1	0	0	0	0	0	7
10:00	0	0	0	0	3	0	1	0	0	0	0	0	4
11:00	0	0	0	1	1	0	0	1	0	0	0	0	3
Total	8	1	12	39	70	21	8	1	0	0	0	2	167

Chittenden County RPC

110 W Canal St
Winooski, VT 05404

Site Code: RICH21
Station ID:
Location 1: Kenyon Rd, Richmond VT
Location 2: On Utility pole, 35 MPH
Direction: South, A to B

File Name: RICH21_TRAX
Date Printed: 6/28/2021
Start Date: 6/17/2021
End Date: 6/21/2021

6/18/2021	> 15 - 20	> 20 - 25	> 25 - 30	> 30 - 35	> 35 - 40	> 40 - 45	> 45 - 50	> 50 - 55	> 55 - 60	> 60 - 65	> 65 - 70	> 70 MPH	Total
Time	0 - 15 MPH	MPH	MPH	MPH	MPH	MPH	MPH	MPH	MPH	MPH	MPH	MPH	
12:00 AM	0	0	1	0	0	0	0	0	0	0	0	0	1
1:00	0	0	0	0	0	0	0	0	0	0	0	0	0
2:00	0	0	0	0	0	0	0	0	0	0	0	0	0
3:00	0	0	0	0	1	0	0	0	0	0	0	0	1
4:00	0	0	0	0	0	1	0	0	0	0	0	0	1
5:00	0	0	0	3	3	2	0	0	0	0	0	0	8
6:00	0	0	0	3	3	3	2	0	0	0	0	0	11
7:00	2	0	1	6	16	9	5	0	0	0	0	0	39
8:00	1	0	0	7	13	5	1	0	0	0	0	0	27
9:00	1	0	0	4	14	6	1	0	0	0	0	0	26
10:00	0	0	3	6	8	2	1	0	0	0	0	0	20
11:00	0	0	0	6	13	5	0	1	0	0	0	0	25
12:00 PM	1	1	2	7	9	3	0	0	0	0	0	0	23
1:00	0	1	3	16	14	3	0	0	0	0	0	0	37
2:00	1	1	2	11	13	2	0	0	0	0	0	1	31
3:00	0	3	2	11	17	4	3	0	1	0	0	2	43
4:00	4	4	7	13	16	5	2	1	0	0	1	1	54
5:00	1	2	0	13	10	3	2	0	0	0	0	0	31
6:00	0	0	1	5	10	7	1	0	0	0	0	0	24
7:00	0	0	0	2	3	6	2	0	0	0	0	0	13
8:00	0	0	1	4	2	3	1	0	0	0	0	0	11
9:00	1	0	2	5	4	1	1	0	0	0	0	0	14
10:00	0	0	0	2	1	0	0	0	0	0	0	0	3
11:00	1	1	1	0	1	1	0	0	0	0	0	0	5
Total	13	13	26	124	171	71	22	1	1	1	0	1	448

Chittenden County RPC

110 W Canal St
Winooski, VT 05404

Site Code: RICH21
Station ID:
Location 1: Kenyon Rd, Richmond VT
Location 2: On Utility pole, 35 MPH
Direction: South, A to B

File Name: RICH21_TRAX
Date Printed: 6/28/2021
Start Date: 6/17/2021
End Date: 6/21/2021

6/19/2021	> 15 - 20	> 20 - 25	> 25 - 30	> 30 - 35	> 35 - 40	> 40 - 45	> 45 - 50	> 50 - 55	> 55 - 60	> 60 - 65	> 65 - 70	> 70 MPH	Total
Time	0 - 15 MPH	MPH	MPH	MPH	MPH	MPH	MPH	MPH	MPH	MPH	MPH	MPH	
12:00 AM	0	0	0	0	1	0	0	0	0	0	0	0	1
1:00	0	0	0	0	0	0	0	0	0	0	0	0	0
2:00	0	0	0	0	0	0	0	0	0	0	0	0	0
3:00	0	0	0	1	0	0	0	0	0	0	0	0	1
4:00	0	0	0	0	0	0	0	0	0	0	0	0	0
5:00	0	0	0	0	1	1	0	0	0	0	0	0	2
6:00	0	0	0	1	4	5	2	0	0	0	0	0	12
7:00	0	0	0	2	6	4	0	0	0	0	0	0	12
8:00	0	1	0	10	5	7	1	0	0	0	0	0	24
9:00	0	0	1	10	10	7	2	0	0	0	0	0	30
10:00	1	0	3	9	8	3	0	1	0	0	0	0	25
11:00	0	0	4	6	9	3	0	1	0	0	0	0	23
12:00 PM	4	0	1	11	11	1	0	0	0	0	0	0	28
1:00	2	0	4	10	12	3	1	1	0	0	0	0	33
2:00	3	0	6	12	12	5	0	1	0	0	0	0	39
3:00	0	2	4	15	9	2	1	0	0	0	0	1	34
4:00	2	0	3	6	5	1	1	0	1	0	0	0	20
5:00	2	4	3	4	11	2	0	1	0	1	0	0	28
6:00	0	0	3	10	3	2	1	0	0	0	0	0	19
7:00	0	0	2	6	3	3	0	0	0	0	0	0	14
8:00	0	0	1	4	5	3	1	0	0	0	0	0	14
9:00	0	0	1	4	2	1	0	0	0	0	0	0	8
10:00	0	0	0	2	3	1	1	0	0	0	0	0	7
11:00	0	0	0	1	0	0	0	0	0	0	0	0	1
Total	14	7	36	124	120	54	11	5	1	1	1	0	375

Chittenden County RPC

110 W Canal St
Winooski, VT 05404

Site Code: RICH21
Station ID:
Location 1: Kenyon Rd, Richmond VT
Location 2: On Utility pole, 35 MPH
Direction: South, A to B

File Name: RICH21_TRAX
Date Printed: 6/28/2021
Start Date: 6/17/2021
End Date: 6/21/2021

6/20/2021	> 15 - 20	> 20 - 25	> 25 - 30	> 30 - 35	> 35 - 40	> 40 - 45	> 45 - 50	> 50 - 55	> 55 - 60	> 60 - 65	> 65 - 70	> 70 MPH	Total
Time	0 - 15 MPH	MPH	MPH	MPH	MPH	MPH	MPH	MPH	MPH	MPH	MPH	MPH	
12:00 AM	0	0	0	1	1	0	0	1	0	0	0	0	3
1:00	0	0	0	0	0	1	0	0	0	0	0	0	1
2:00	0	0	0	0	0	0	0	0	0	0	0	0	0
3:00	0	0	0	1	1	0	0	0	0	0	0	0	2
4:00	0	0	0	0	0	0	0	0	0	0	0	0	0
5:00	0	0	0	0	2	0	0	0	0	0	0	0	2
6:00	0	0	0	0	6	1	1	0	0	0	0	0	8
7:00	1	0	0	4	3	2	0	1	0	0	0	0	11
8:00	0	0	0	5	10	1	0	0	0	0	0	0	16
9:00	0	1	5	5	7	1	0	0	0	0	0	0	19
10:00	2	0	2	17	7	2	0	0	0	0	0	0	30
11:00	1	0	4	15	7	1	0	0	0	0	0	0	28
12:00 PM	0	1	2	16	9	2	0	0	0	0	0	0	30
1:00	0	0	1	12	10	3	2	0	1	0	0	1	30
2:00	1	2	0	14	10	3	0	0	0	0	0	0	30
3:00	2	1	3	10	6	4	1	2	0	0	0	0	29
4:00	0	1	0	11	9	5	0	0	0	0	0	0	26
5:00	1	0	1	8	14	3	1	0	0	0	0	0	28
6:00	1	0	4	2	5	3	2	1	0	0	0	0	18
7:00	1	0	2	2	7	1	0	0	0	0	0	0	13
8:00	0	1	4	7	3	2	0	0	0	0	0	0	17
9:00	0	0	0	6	3	2	0	0	0	0	0	0	11
10:00	0	0	0	2	0	0	0	0	0	0	0	0	2
11:00	0	0	0	0	1	0	0	0	0	0	0	0	1
Total	10	7	28	138	121	37	7	5	1	0	0	0	355

Chittenden County RPC

110 W Canal St
Winooski, VT 05404

Site Code: RICH21
Station ID:
Location 1: Kenyon Rd, Richmond VT
Location 2: On Utility pole, 35 MPH
Direction: South, A to B

File Name: RICH21_TRAX
Date Printed: 6/28/2021
Start Date: 6/17/2021
End Date: 6/21/2021

6/21/2021	> 15 - 20	> 20 - 25	> 25 - 30	> 30 - 35	> 35 - 40	> 40 - 45	> 45 - 50	> 50 - 55	> 55 - 60	> 60 - 65	> 65 - 70	> 70 MPH	Total
Time	0 - 15 MPH	MPH	MPH	MPH	MPH	MPH	MPH	MPH	MPH	MPH	MPH	MPH	
12:00 AM	0	0	0	0	0	0	0	0	0	0	0	0	0
1:00	0	0	0	0	0	0	0	0	0	0	0	0	0
2:00	0	0	0	1	0	0	0	0	0	0	0	0	1
3:00	0	0	0	0	1	0	0	0	0	0	0	0	1
4:00	0	0	0	0	0	0	0	0	0	0	0	0	0
5:00	0	0	0	2	2	2	0	1	0	0	0	0	7
6:00	0	0	1	6	12	4	2	0	0	0	0	0	25
7:00	1	0	3	9	14	2	0	0	0	0	0	0	29
8:00	0	1	4	14	12	4	1	0	0	0	0	0	36
9:00	0	0	1	9	9	3	0	0	0	0	0	0	22
10:00	0	0	8	11	6	4	0	0	0	0	0	0	29
11:00	1	1	3	9	7	2	1	0	0	0	0	0	24
12:00 PM	0	0	3	7	4	1	0	0	0	0	0	0	15
1:00	0	0	0	0	0	0	0	0	0	0	0	0	0
2:00	*	*	*	*	*	*	*	*	*	*	*	*	0
3:00	*	*	*	*	*	*	*	*	*	*	*	*	0
4:00	*	*	*	*	*	*	*	*	*	*	*	*	0
5:00	*	*	*	*	*	*	*	*	*	*	*	*	0
6:00	*	*	*	*	*	*	*	*	*	*	*	*	0
7:00	*	*	*	*	*	*	*	*	*	*	*	*	0
8:00	*	*	*	*	*	*	*	*	*	*	*	*	0
9:00	*	*	*	*	*	*	*	*	*	*	*	*	0
10:00	*	*	*	*	*	*	*	*	*	*	*	*	0
11:00	*	*	*	*	*	*	*	*	*	*	*	*	0
Total	2	2	23	68	67	22	4	1	0	0	0	0	189
Grand Total	47	30	125	493	549	205	52	13	3	2	1	3	1534
Stats			Percentile	15th	50th	85th	95th						
			Speed	31.2	36.5	40.2							
			Mean Speed (Average)	32.0									
			10 MPH Pace Speed	27-36									
			Number in Pace	1089									
			Percent in Pace	69.0%									
			Number > 35 MPH	290									
			Percent > 35 MPH	19.5%									

Chittenden County RPC

110 W Canal St
Winooski, VT 05404

Site Code: RICH21
Station ID:
Location 1: Kenyon Rd, Richmond VT
Location 2: On Utility pole, 35 MPH
Direction: North, B to A

File Name: RICH21_TRAX
Date Printed: 6/28/2021
Start Date: 6/17/2021
End Date: 6/21/2021

6/17/2021	> 15 - 20	> 20 - 25	> 25 - 30	> 30 - 35	> 35 - 40	> 40 - 45	> 45 - 50	> 50 - 55	> 55 - 60	> 60 - 65	> 65 - 70	> 70 MPH	Total
Time	0 - 15 MPH	MPH	MPH	MPH	MPH	MPH	MPH	MPH	MPH	MPH	MPH	MPH	
12:00 AM	*	*	*	*	*	*	*	*	*	*	*	*	0
1:00	*	*	*	*	*	*	*	*	*	*	*	*	0
2:00	*	*	*	*	*	*	*	*	*	*	*	*	0
3:00	*	*	*	*	*	*	*	*	*	*	*	*	0
4:00	*	*	*	*	*	*	*	*	*	*	*	*	0
5:00	*	*	*	*	*	*	*	*	*	*	*	*	0
6:00	*	*	*	*	*	*	*	*	*	*	*	*	0
7:00	*	*	*	*	*	*	*	*	*	*	*	*	0
8:00	*	*	*	*	*	*	*	*	*	*	*	*	0
9:00	*	*	*	*	*	*	*	*	*	*	*	*	0
10:00	*	*	*	*	*	*	*	*	*	*	*	*	0
11:00	*	*	*	*	*	*	*	*	*	*	*	*	0
12:00 PM	*	*	*	*	*	*	*	*	*	*	*	*	0
1:00	*	*	*	*	*	*	*	*	*	*	*	*	0
2:00	*	*	*	*	*	*	*	*	*	*	*	*	0
3:00	1	0	2	6	8	4	3	1	0	0	0	0	25
4:00	1	0	2	7	9	8	3	0	0	0	0	0	30
5:00	0	2	2	6	12	12	0	1	0	0	0	0	35
6:00	0	0	1	2	9	4	1	0	0	1	0	0	18
7:00	4	2	2	3	2	1	1	0	1	1	0	0	20
8:00	2	1	3	1	1	1	0	0	0	0	0	0	9
9:00	3	2	2	5	2	0	0	1	0	0	0	0	15
10:00	2	1	1	0	0	5	0	0	0	0	0	0	9
11:00	1	1	1	2	1	3	0	0	0	0	0	0	9
Total	14	9	16	32	44	38	8	3	1	2	0	0	170

Chittenden County RPC

110 W Canal St
Winooski, VT 05404

Site Code: RICH21
Station ID:
Location 1: Kenyon Rd, Richmond VT
Location 2: On Utility pole, 35 MPH
Direction: North, B to A

File Name: RICH21_TRAX
Date Printed: 6/28/2021
Start Date: 6/17/2021
End Date: 6/21/2021

6/18/2021	> 15 - 20	> 20 - 25	> 25 - 30	> 30 - 35	> 35 - 40	> 40 - 45	> 45 - 50	> 50 - 55	> 55 - 60	> 60 - 65	> 65 - 70	> 70 MPH	Total
Time	0 - 15 MPH	MPH	MPH	MPH	MPH	MPH	MPH	MPH	MPH	MPH	MPH	MPH	
12:00 AM	0	0	0	0	0	0	0	0	0	0	0	0	0
1:00	0	0	0	0	0	0	0	0	0	0	0	0	0
2:00	0	0	0	0	0	0	0	0	0	0	0	0	0
3:00	0	0	0	0	0	0	0	0	0	0	0	0	0
4:00	0	0	0	0	0	0	0	0	0	0	0	0	0
5:00	0	0	0	0	1	1	1	0	0	0	0	0	3
6:00	1	0	0	0	5	7	0	0	0	0	0	0	13
7:00	1	0	1	0	4	5	5	0	0	0	0	0	16
8:00	1	0	1	3	8	3	1	0	0	0	0	0	17
9:00	1	0	1	1	6	8	3	0	0	0	0	0	20
10:00	0	0	1	10	5	6	1	0	0	0	0	0	23
11:00	0	1	0	3	9	3	0	0	0	0	0	0	16
12:00 PM	1	0	4	7	14	10	1	0	0	0	0	0	37
1:00	1	1	1	0	8	11	0	0	0	0	0	0	22
2:00	1	1	1	5	5	4	4	0	0	0	0	0	21
3:00	0	2	1	8	10	6	2	0	0	0	0	0	29
4:00	1	2	2	2	12	5	0	0	0	0	0	0	24
5:00	0	1	3	1	13	11	2	0	0	0	0	0	31
6:00	0	0	2	3	12	12	3	0	0	0	0	0	32
7:00	0	0	1	2	11	9	2	0	0	0	0	0	25
8:00	1	0	1	5	5	5	1	0	0	0	0	0	18
9:00	0	0	0	6	6	2	0	0	0	0	0	1	15
10:00	0	0	0	2	2	2	1	0	0	0	0	0	7
11:00	1	0	0	1	4	2	1	0	0	0	0	0	9
Total	10	8	20	59	140	112	28	0	0	0	0	0	378

Chittenden County RPC

110 W Canal St
Winooski, VT 05404

Site Code: RICH21
Station ID:
Location 1: Kenyon Rd, Richmond VT
Location 2: On Utility pole, 35 MPH
Direction: North, B to A

File Name: RICH21_TRAX
Date Printed: 6/28/2021
Start Date: 6/17/2021
End Date: 6/21/2021

6/19/2021	> 15 - 20	> 20 - 25	> 25 - 30	> 30 - 35	> 35 - 40	> 40 - 45	> 45 - 50	> 50 - 55	> 55 - 60	> 60 - 65	> 65 - 70	> 70 MPH	Total
Time	0 - 15 MPH	MPH	MPH	MPH	MPH	MPH	MPH	MPH	MPH	MPH	MPH	MPH	
12:00 AM	0	0	0	0	0	1	0	0	0	0	0	0	1
1:00	0	0	0	0	0	0	1	0	0	0	0	0	1
2:00	0	0	0	0	0	0	0	0	0	0	0	0	0
3:00	0	0	0	0	0	0	0	0	0	0	0	0	0
4:00	0	0	0	0	0	2	0	0	0	0	0	0	2
5:00	0	0	0	0	0	0	0	0	0	0	0	0	0
6:00	0	1	0	1	1	2	0	0	0	0	0	0	5
7:00	0	0	0	1	0	2	0	0	0	0	0	0	3
8:00	0	0	2	5	3	3	2	1	0	0	0	0	16
9:00	0	0	1	5	7	5	1	0	0	0	0	0	19
10:00	1	0	3	4	9	11	1	0	0	0	0	0	29
11:00	2	0	5	10	15	9	2	0	0	0	0	0	43
12:00 PM	0	1	4	12	7	7	0	0	0	0	0	1	32
1:00	1	1	3	6	10	7	1	1	1	0	0	0	31
2:00	0	0	2	5	5	5	0	0	0	0	0	0	17
3:00	1	1	3	7	7	7	1	0	0	0	1	0	28
4:00	3	0	3	6	8	5	0	0	0	0	0	0	25
5:00	2	2	4	4	4	4	2	0	0	0	0	0	22
6:00	0	0	1	10	6	6	1	0	0	0	0	0	24
7:00	0	1	1	4	8	3	1	0	0	0	0	0	18
8:00	0	0	0	0	7	2	1	0	0	0	0	0	10
9:00	0	0	1	0	9	2	1	0	0	0	0	0	13
10:00	0	0	0	3	5	3	2	0	0	0	0	0	13
11:00	0	0	0	4	1	3	0	0	0	0	0	0	8
Total	10	7	33	87	112	89	17	2	1	0	1	0	360

Chittenden County RPC

110 W Canal St
Winooski, VT 05404

Site Code: RICH21
Station ID:
Location 1: Kenyon Rd, Richmond VT
Location 2: On Utility pole, 35 MPH
Direction: North, B to A

File Name: RICH21_TRAX
Date Printed: 6/28/2021
Start Date: 6/17/2021
End Date: 6/21/2021

6/20/2021	> 15 - 20	> 20 - 25	> 25 - 30	> 30 - 35	> 35 - 40	> 40 - 45	> 45 - 50	> 50 - 55	> 55 - 60	> 60 - 65	> 65 - 70	> 70 MPH	Total
Time	0 - 15 MPH	MPH	MPH	MPH	MPH	MPH	MPH	MPH	MPH	MPH	MPH	MPH	
12:00 AM	0	0	0	1	2	1	0	0	0	0	0	0	4
1:00	0	0	0	0	0	0	0	0	0	0	0	0	0
2:00	0	0	0	0	1	0	0	0	0	0	0	0	1
3:00	0	0	0	0	0	0	0	0	0	0	0	0	0
4:00	0	0	0	0	0	0	0	0	0	0	0	0	0
5:00	0	0	0	0	0	0	0	0	0	0	0	0	0
6:00	0	0	0	0	1	0	1	0	0	0	0	0	2
7:00	0	0	0	2	2	2	1	0	0	0	0	0	7
8:00	0	2	0	3	2	2	1	0	0	0	0	0	10
9:00	1	0	3	2	7	2	0	0	0	0	0	0	15
10:00	0	0	0	8	15	6	1	0	0	0	0	0	30
11:00	0	1	4	7	14	8	0	0	0	0	0	0	34
12:00 PM	1	0	3	4	15	2	0	0	0	0	0	0	25
1:00	0	0	2	0	9	3	3	0	0	0	0	0	17
2:00	0	4	3	10	16	2	0	0	0	0	0	0	35
3:00	0	1	2	14	12	4	1	0	0	0	0	0	34
4:00	0	1	1	8	12	5	1	0	1	0	0	0	29
5:00	0	2	2	4	15	2	0	0	0	0	0	0	25
6:00	1	0	0	4	6	4	1	1	0	0	0	0	17
7:00	0	1	2	5	11	4	0	0	0	0	0	0	23
8:00	1	1	4	5	15	4	0	0	0	0	0	0	30
9:00	0	0	2	4	9	2	1	0	0	0	0	0	18
10:00	0	0	0	0	3	1	0	1	0	0	0	0	5
11:00	0	0	0	0	0	0	0	0	0	0	0	0	0
Total	4	13	28	81	167	54	11	2	1	0	0	0	361

Chittenden County RPC

110 W Canal St
Winooski, VT 05404

Site Code: RICH21
Station ID:
Location 1: Kenyon Rd, Richmond VT
Location 2: On Utility pole, 35 MPH
Direction: North, B to A

File Name: RICH21_TRAX
Date Printed: 6/28/2021
Start Date: 6/17/2021
End Date: 6/21/2021

6/21/2021	> 15 - 20	> 20 - 25	> 25 - 30	> 30 - 35	> 35 - 40	> 40 - 45	> 45 - 50	> 50 - 55	> 55 - 60	> 60 - 65	> 65 - 70	> 70 MPH	Total
Time	0 - 15 MPH	MPH	MPH	MPH	MPH	MPH	MPH	MPH	MPH	MPH	MPH	MPH	
12:00 AM	0	0	0	0	0	2	0	0	0	0	0	0	2
1:00	0	0	0	1	1	1	0	0	0	0	0	0	3
2:00	0	0	0	0	0	0	0	0	0	0	0	0	0
3:00	0	0	0	0	0	0	0	0	0	0	0	0	0
4:00	0	0	0	0	0	1	0	0	0	0	0	0	1
5:00	0	0	0	1	0	1	1	0	0	0	0	0	3
6:00	0	0	0	1	5	3	1	0	0	0	0	0	10
7:00	0	0	0	4	5	5	1	0	0	0	0	0	15
8:00	0	0	2	4	7	5	1	0	0	0	0	0	19
9:00	0	0	0	4	12	5	0	0	0	0	0	0	21
10:00	0	1	1	2	5	3	0	0	1	0	0	0	13
11:00	1	0	1	4	7	3	1	0	0	0	0	0	17
12:00 PM	1	0	2	7	12	4	0	0	0	0	0	0	26
1:00	0	0	0	0	0	0	0	0	0	0	0	0	0
2:00	*	*	*	*	*	*	*	*	*	*	*	*	0
3:00	*	*	*	*	*	*	*	*	*	*	*	*	0
4:00	*	*	*	*	*	*	*	*	*	*	*	*	0
5:00	*	*	*	*	*	*	*	*	*	*	*	*	0
6:00	*	*	*	*	*	*	*	*	*	*	*	*	0
7:00	*	*	*	*	*	*	*	*	*	*	*	*	0
8:00	*	*	*	*	*	*	*	*	*	*	*	*	0
9:00	*	*	*	*	*	*	*	*	*	*	*	*	0
10:00	*	*	*	*	*	*	*	*	*	*	*	*	0
11:00	*	*	*	*	*	*	*	*	*	*	*	*	0
Total	2	1	6	28	54	33	5	0	1	0	0	0	130
Grand Total	40	38	103	287	517	326	69	7	4	2	1	0	1399

Stats	Percentile	15th	50th	85th	95th
	Speed	31.2	36.5	40.2	
	Mean Speed (Average)	32.7			
	10 MPH Pace Speed	28-37			
	Number in Pace	930			
	Percent in Pace	64.0%			
	Number > 35 MPH	414			
	Percent > 35 MPH	30.5%			

Chittenden County RPC

110 W Canal St
Winooski, VT 05404

Site Code: RICH21
Station ID:
Location 1: Kenyon Rd, Richmond VT
Location 2: On Utility pole, 35 MPH
Direction: Combined

File Name: RICH21_TRAX
Date Printed: 6/28/2021
Start Date: 6/17/2021
End Date: 6/21/2021

6/17/2021	> 15 - 20	> 20 - 25	> 25 - 30	> 30 - 35	> 35 - 40	> 40 - 45	> 45 - 50	> 50 - 55	> 55 - 60	> 60 - 65	> 65 - 70	> 70 MPH	Total
Time	0 - 15 MPH	MPH	MPH	MPH	MPH	MPH	MPH	MPH	MPH	MPH	MPH	MPH	
12:00 AM	*	*	*	*	*	*	*	*	*	*	*	*	0
1:00	*	*	*	*	*	*	*	*	*	*	*	*	0
2:00	*	*	*	*	*	*	*	*	*	*	*	*	0
3:00	*	*	*	*	*	*	*	*	*	*	*	*	0
4:00	*	*	*	*	*	*	*	*	*	*	*	*	0
5:00	*	*	*	*	*	*	*	*	*	*	*	*	0
6:00	*	*	*	*	*	*	*	*	*	*	*	*	0
7:00	*	*	*	*	*	*	*	*	*	*	*	*	0
8:00	*	*	*	*	*	*	*	*	*	*	*	*	0
9:00	*	*	*	*	*	*	*	*	*	*	*	*	0
10:00	*	*	*	*	*	*	*	*	*	*	*	*	0
11:00	*	*	*	*	*	*	*	*	*	*	*	*	0
12:00 PM	*	*	*	*	*	*	*	*	*	*	*	*	0
1:00	*	*	*	*	*	*	*	*	*	*	*	*	0
2:00	*	*	*	*	*	*	*	*	*	*	*	*	0
3:00	2	0	6	8	20	11	7	1	0	0	0	0	55
4:00	3	0	3	19	23	11	3	0	0	0	0	0	64
5:00	2	3	2	16	34	18	1	1	0	0	0	0	79
6:00	0	0	2	7	18	8	1	0	0	1	0	0	37
7:00	4	2	3	7	7	1	2	0	1	1	0	1	33
8:00	4	1	6	5	4	1	0	0	0	0	0	1	22
9:00	4	2	4	6	3	1	1	1	0	0	0	0	22
10:00	2	1	1	0	3	5	1	0	0	0	0	0	13
11:00	1	1	1	3	2	3	0	1	0	0	0	0	12
Total	22	10	28	71	114	59	16	4	1	2	0	2	337

Chittenden County RPC

110 W Canal St
Winooski, VT 05404

Site Code: RICH21
Station ID:
Location 1: Kenyon Rd, Richmond VT
Location 2: On Utility pole, 35 MPH
Direction: Combined

File Name: RICH21_TRAX
Date Printed: 6/28/2021
Start Date: 6/17/2021
End Date: 6/21/2021

6/18/2021	> 15 - 20	> 20 - 25	> 25 - 30	> 30 - 35	> 35 - 40	> 40 - 45	> 45 - 50	> 50 - 55	> 55 - 60	> 60 - 65	> 65 - 70	> 70 MPH	Total
Time	0 - 15 MPH	MPH	MPH	MPH	MPH	MPH	MPH	MPH	MPH	MPH	MPH	MPH	
12:00 AM	0	0	1	0	0	0	0	0	0	0	0	0	1
1:00	0	0	0	0	0	0	0	0	0	0	0	0	0
2:00	0	0	0	0	0	0	0	0	0	0	0	0	0
3:00	0	0	0	0	1	0	0	0	0	0	0	0	1
4:00	0	0	0	0	0	1	0	0	0	0	0	0	1
5:00	0	0	0	3	4	3	1	0	0	0	0	0	11
6:00	1	0	0	3	8	10	2	0	0	0	0	0	24
7:00	3	0	2	6	20	14	10	0	0	0	0	0	55
8:00	2	0	1	10	21	8	2	0	0	0	0	0	44
9:00	2	0	1	5	20	14	4	0	0	0	0	0	46
10:00	0	0	4	16	13	8	2	0	0	0	0	0	43
11:00	0	1	0	9	22	8	0	1	0	0	0	0	41
12:00 PM	2	1	6	14	23	13	1	0	0	0	0	0	60
1:00	1	2	4	16	22	14	0	0	0	0	0	0	59
2:00	2	2	3	16	18	6	4	0	0	0	0	0	52
3:00	0	5	3	19	27	10	5	0	0	1	0	2	72
4:00	5	6	9	15	28	10	2	0	1	0	0	1	78
5:00	1	3	3	14	23	14	4	0	0	0	0	0	62
6:00	0	0	3	8	22	19	4	0	0	0	0	0	56
7:00	0	0	1	4	14	15	4	0	0	0	0	0	38
8:00	1	0	2	9	7	8	2	0	0	0	0	0	29
9:00	1	0	2	11	10	3	1	0	0	0	0	0	29
10:00	0	0	0	4	3	2	1	0	0	0	0	0	10
11:00	2	1	1	1	5	3	1	0	0	0	0	0	14
Total	23	21	46	183	311	183	50	1	1	1	0	1	826

Chittenden County RPC

110 W Canal St
Winooski, VT 05404

Site Code: RICH21
Station ID:
Location 1: Kenyon Rd, Richmond VT
Location 2: On Utility pole, 35 MPH
Direction: Combined

File Name: RICH21_TRAX
Date Printed: 6/28/2021
Start Date: 6/17/2021
End Date: 6/21/2021

6/19/2021	> 15 - 20	> 20 - 25	> 25 - 30	> 30 - 35	> 35 - 40	> 40 - 45	> 45 - 50	> 50 - 55	> 55 - 60	> 60 - 65	> 65 - 70	> 70 MPH	Total
Time	0 - 15 MPH	MPH	MPH	MPH	MPH	MPH	MPH	MPH	MPH	MPH	MPH	MPH	
12:00 AM	0	0	0	0	1	1	0	0	0	0	0	0	2
1:00	0	0	0	0	0	0	1	0	0	0	0	0	1
2:00	0	0	0	0	0	0	0	0	0	0	0	0	0
3:00	0	0	0	1	0	0	0	0	0	0	0	0	1
4:00	0	0	0	0	0	2	0	0	0	0	0	0	2
5:00	0	0	0	0	1	1	0	0	0	0	0	0	2
6:00	0	1	0	2	5	7	2	0	0	0	0	0	17
7:00	0	0	0	3	6	6	0	0	0	0	0	0	15
8:00	0	1	2	15	8	10	3	1	0	0	0	0	40
9:00	0	0	2	15	17	12	3	0	0	0	0	0	49
10:00	2	0	6	13	17	14	1	1	0	0	0	0	54
11:00	2	0	9	16	24	12	2	1	0	0	0	0	66
12:00 PM	4	1	5	23	18	8	0	0	0	0	0	1	60
1:00	3	1	7	16	22	10	2	2	1	0	0	0	64
2:00	3	0	8	17	17	10	0	1	0	0	0	0	56
3:00	1	3	7	22	16	9	2	0	0	1	0	1	62
4:00	5	0	6	12	13	6	1	1	0	1	0	0	45
5:00	4	6	7	8	15	6	2	0	1	0	1	0	50
6:00	0	0	4	20	9	8	2	0	0	0	0	0	43
7:00	0	1	3	10	11	6	1	0	0	0	0	0	32
8:00	0	0	1	4	12	5	2	0	0	0	0	0	24
9:00	0	0	2	4	11	3	1	0	0	0	0	0	21
10:00	0	0	0	5	8	4	3	0	0	0	0	0	20
11:00	0	0	0	5	1	3	0	0	0	0	0	0	9
Total	24	14	69	211	232	143	28	7	2	1	2	0	735

Chittenden County RPC

110 W Canal St
Winooski, VT 05404

Site Code: RICH21
Station ID:
Location 1: Kenyon Rd, Richmond VT
Location 2: On Utility pole, 35 MPH
Direction: Combined

File Name: RICH21_TRAX
Date Printed: 6/28/2021
Start Date: 6/17/2021
End Date: 6/21/2021

6/20/2021	> 15 - 20	> 20 - 25	> 25 - 30	> 30 - 35	> 35 - 40	> 40 - 45	> 45 - 50	> 50 - 55	> 55 - 60	> 60 - 65	> 65 - 70	> 70 MPH	Total
Time	0 - 15 MPH	MPH	MPH	MPH	MPH	MPH	MPH	MPH	MPH	MPH	MPH	MPH	
12:00 AM	0	0	0	2	3	1	0	1	0	0	0	0	7
1:00	0	0	0	0	0	1	0	0	0	0	0	0	1
2:00	0	0	0	0	1	0	0	0	0	0	0	0	1
3:00	0	0	0	1	1	0	0	0	0	0	0	0	2
4:00	0	0	0	0	0	0	0	0	0	0	0	0	0
5:00	0	0	0	0	2	0	0	0	0	0	0	0	2
6:00	0	0	0	0	7	1	2	0	0	0	0	0	10
7:00	1	0	0	6	5	4	1	1	0	0	0	0	18
8:00	0	2	0	8	12	3	1	0	0	0	0	0	26
9:00	1	1	8	7	14	3	0	0	0	0	0	0	34
10:00	2	0	2	25	22	8	1	0	0	0	0	0	60
11:00	1	1	8	22	21	9	0	0	0	0	0	0	62
12:00 PM	1	1	5	20	24	4	0	0	0	0	0	0	55
1:00	0	0	3	12	19	6	5	0	1	0	0	1	47
2:00	1	6	3	24	26	5	0	0	0	0	0	0	65
3:00	2	2	5	24	18	8	2	2	0	0	0	0	63
4:00	0	2	1	19	21	10	1	0	1	0	0	0	55
5:00	1	2	3	12	29	5	1	0	0	0	0	0	53
6:00	2	0	4	6	11	7	3	2	0	0	0	0	35
7:00	1	1	4	7	18	5	0	0	0	0	0	0	36
8:00	1	2	8	12	18	6	0	0	0	0	0	0	47
9:00	0	0	2	10	12	4	1	0	0	0	0	0	29
10:00	0	0	0	2	3	1	0	1	0	0	0	0	7
11:00	0	0	0	0	1	0	0	0	0	0	0	0	1
Total	14	20	56	219	288	91	18	7	2	0	0	0	716

Chittenden County RPC

110 W Canal St
Winooski, VT 05404

Site Code: RICH21
Station ID:
Location 1: Kenyon Rd, Richmond VT
Location 2: On Utility pole, 35 MPH
Direction: Combined

File Name: RICH21_TRAX
Date Printed: 6/28/2021
Start Date: 6/17/2021
End Date: 6/21/2021

6/21/2021	> 15 - 20	> 20 - 25	> 25 - 30	> 30 - 35	> 35 - 40	> 40 - 45	> 45 - 50	> 50 - 55	> 55 - 60	> 60 - 65	> 65 - 70	> 70 MPH	Total
Time	0 - 15 MPH	MPH	MPH	MPH	MPH	MPH	MPH	MPH	MPH	MPH	MPH	MPH	
12:00 AM	0	0	0	0	0	2	0	0	0	0	0	0	2
1:00	0	0	0	1	1	1	0	0	0	0	0	0	3
2:00	0	0	0	1	0	0	0	0	0	0	0	0	1
3:00	0	0	0	0	1	0	0	0	0	0	0	0	1
4:00	0	0	0	0	0	1	0	0	0	0	0	0	1
5:00	0	0	0	3	2	3	1	1	0	0	0	0	10
6:00	0	0	1	7	17	7	3	0	0	0	0	0	35
7:00	1	0	3	13	19	7	1	0	0	0	0	0	44
8:00	0	1	6	18	19	9	2	0	0	0	0	0	55
9:00	0	0	1	13	21	8	0	0	0	0	0	0	43
10:00	0	1	9	13	11	7	0	0	1	0	0	0	42
11:00	2	1	4	13	14	5	2	0	0	0	0	0	41
12:00 PM	1	0	5	14	16	5	0	0	0	0	0	0	41
1:00	0	0	0	0	0	0	0	0	0	0	0	0	0
2:00	*	*	*	*	*	*	*	*	*	*	*	*	0
3:00	*	*	*	*	*	*	*	*	*	*	*	*	0
4:00	*	*	*	*	*	*	*	*	*	*	*	*	0
5:00	*	*	*	*	*	*	*	*	*	*	*	*	0
6:00	*	*	*	*	*	*	*	*	*	*	*	*	0
7:00	*	*	*	*	*	*	*	*	*	*	*	*	0
8:00	*	*	*	*	*	*	*	*	*	*	*	*	0
9:00	*	*	*	*	*	*	*	*	*	*	*	*	0
10:00	*	*	*	*	*	*	*	*	*	*	*	*	0
11:00	*	*	*	*	*	*	*	*	*	*	*	*	0
Total	4	3	29	96	121	55	9	1	1	0	0	0	319
Grand Total	87	68	228	780	1066	531	121	20	7	4	2	3	2933

Stats	Percentile	15th	50th	85th	95th
	Speed	31.2	36.5	40.2	
	Mean Speed (Average)	32.4			
	10 MPH Pace Speed	27-36			
	Number in Pace	1998			
	Percent in Pace	66.0%			
	Number > 35 MPH	704			
	Percent > 35 MPH	24.7%			

Ball-Banking Data Sheet

BALL BANK WORKSHEET

Road Name: _____

Municipality: _____

Date/Time: _____

Driver: _____

Observer: _____

Vehicle: _____

Weather: _____

Surface condition: _____

Speed Limit: _____

# of Curves	Advisory Speed (mph)	
	Less than or equal to 30 mph	Greater than or equal to 35 mph
1	W1-1 L R	W1-2 L R
2	W1-3 L R	W1-4 L R
3 or more	W1-5 L	R

Speed Range	Maximum Ball Bank Reading
≤ 20 mph	16°
25-30 mph	14°
≥ 35 mph	12°

Curve No.	Existing Advisory Speed (mph)	Driving Direction	Recorded Ball Bank Reading										New Advisory Speed (mph)
			Speed (mph)										
			15	20	25	30	35	40	45	50	55	60	