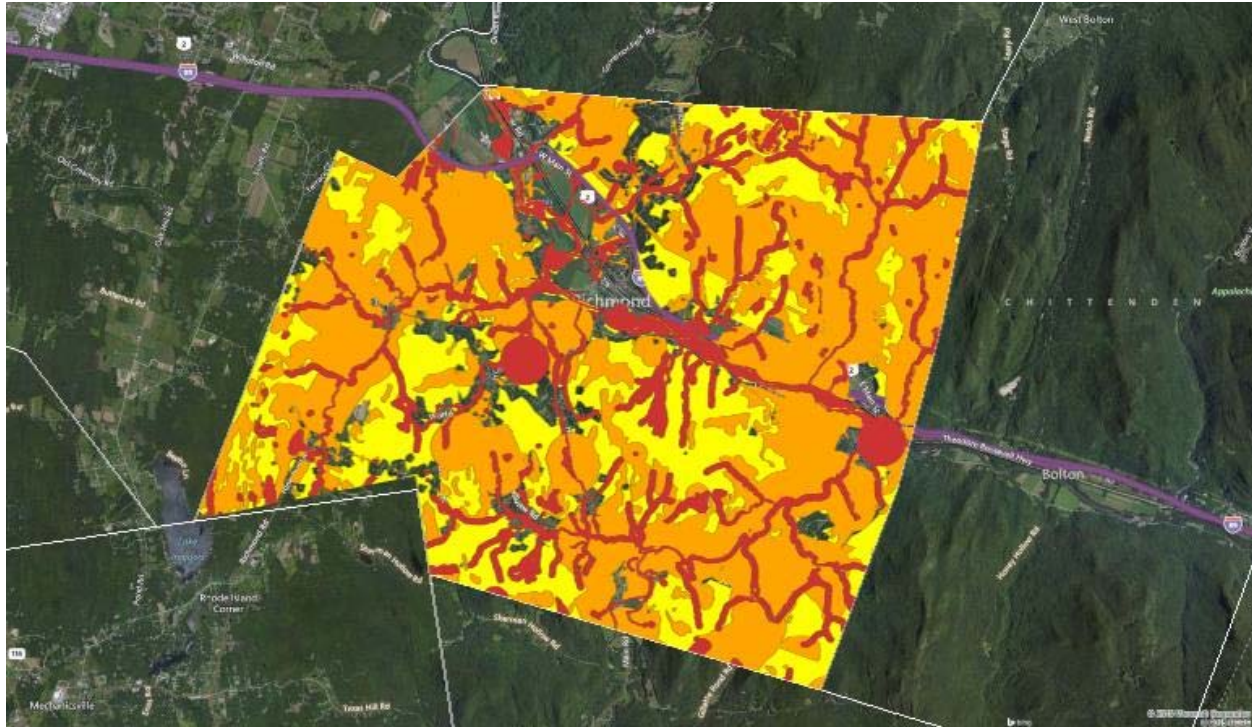


## Hilke-Map-1-Tiered Priorities



### **Primary Conservation Areas** ■

- Rare, Threatened, & Endangered species element occurrences
- Wetlands & Streams (with 50' buffers)
- Riparian habitats as mapped by Arrowwood
- Vernal pool with 100' buffer
- S1,S2 S3 natural communities

### **Secondary Conservation Areas** ■

(EXCLUDES ALL LANDS Covered in Primary Conservation Areas)

- Vernal pools with 600' buffer
- Early Successional Habitats (Arrowwood)
- Ledges (Arrowwood)
- Grassland
- AS4 natural communities defined by Arrowwood and NOT included in Primary Conservation Area
- Road crossings (delineated by Arrowwood)
- All lands within 1/4 mile of the above road crossings

### **Tertiary Conservation Areas** ■

(EXCLUDES ALL LANDS Covered in Primary & Secondary Conservation Areas)

- S5 Natural Communities
- All land included in a contiguous Habitat Unit (of any size) defined by Arrowwood