

Richmond

Cochran Road Corridor Study

TUESDAY, APRIL 9, 2024

5:30 PM



CHITTENDEN COUNTY RPC
Communities Planning Together



Agenda

- **Project Overview**
 - Project Team Introduction
 - Project Context & Goals
 - Project Limits/Locus Map
 - Planning Context
- **Existing Conditions**
 - High level overview
 - Roadway and Sidewalk elements
 - Intersection overview
- **Discussion of Opportunities and Concerns**



Project Team



Jason Charest, PE, PTP
Senior Transportation Planning Engineer

Erik Maki, PE, PTO
Senior Director, Traffic Engineering

Annabelle Dally
Communications & Public Involvement Manager

Kevin McCarthy, PE
Senior Transportation Engineer

Zachary Gavel
Transportation Planner



Project Context

- Scoping Study – Cochran Road 25mph village segments at each end;
- Corridor Study – Cochran Road; build on the recommendations and alternatives presented in the *Town of Richmond Bike, Walk, and Trails Plan*.
- Traffic Calming – evaluate the temporary traffic calming measures and recommend permanent traffic calming solutions.



Project Goals

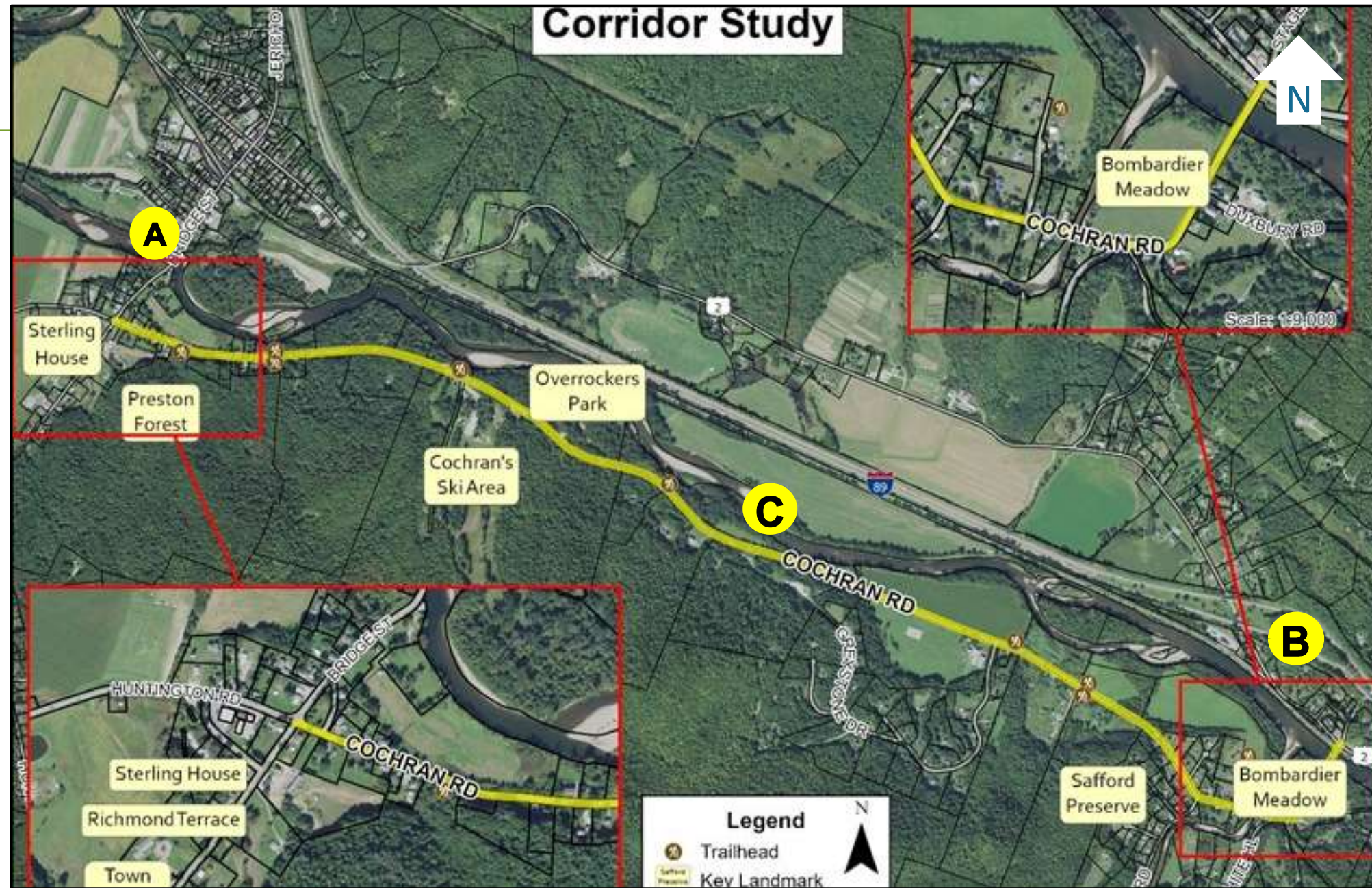
1. Village segments - Identify new infrastructure such as sidewalks that can be incorporated
2. Middle segment - Identify specific on-road and off-road improvements and multi-modal strategies that address safety, capacity and connectivity for pedestrians and cyclists
3. Evaluate the study on temporary traffic calming measures and recommend permanent traffic calming solutions or additional devices.



Study Area

Project Limits:

- A. Richmond end
- B. Jonesville end
- C. Mid-section 2.5 miles



Review of Previous Studies

DOCUMENTS INCLUDE:

- 2022 Richmond bike.walk.trails
- 2018 Town Plan
- ARPA Survey



CHITTENDEN COUNTY RPC
Communities Planning Together



Existing Conditions – Richmond



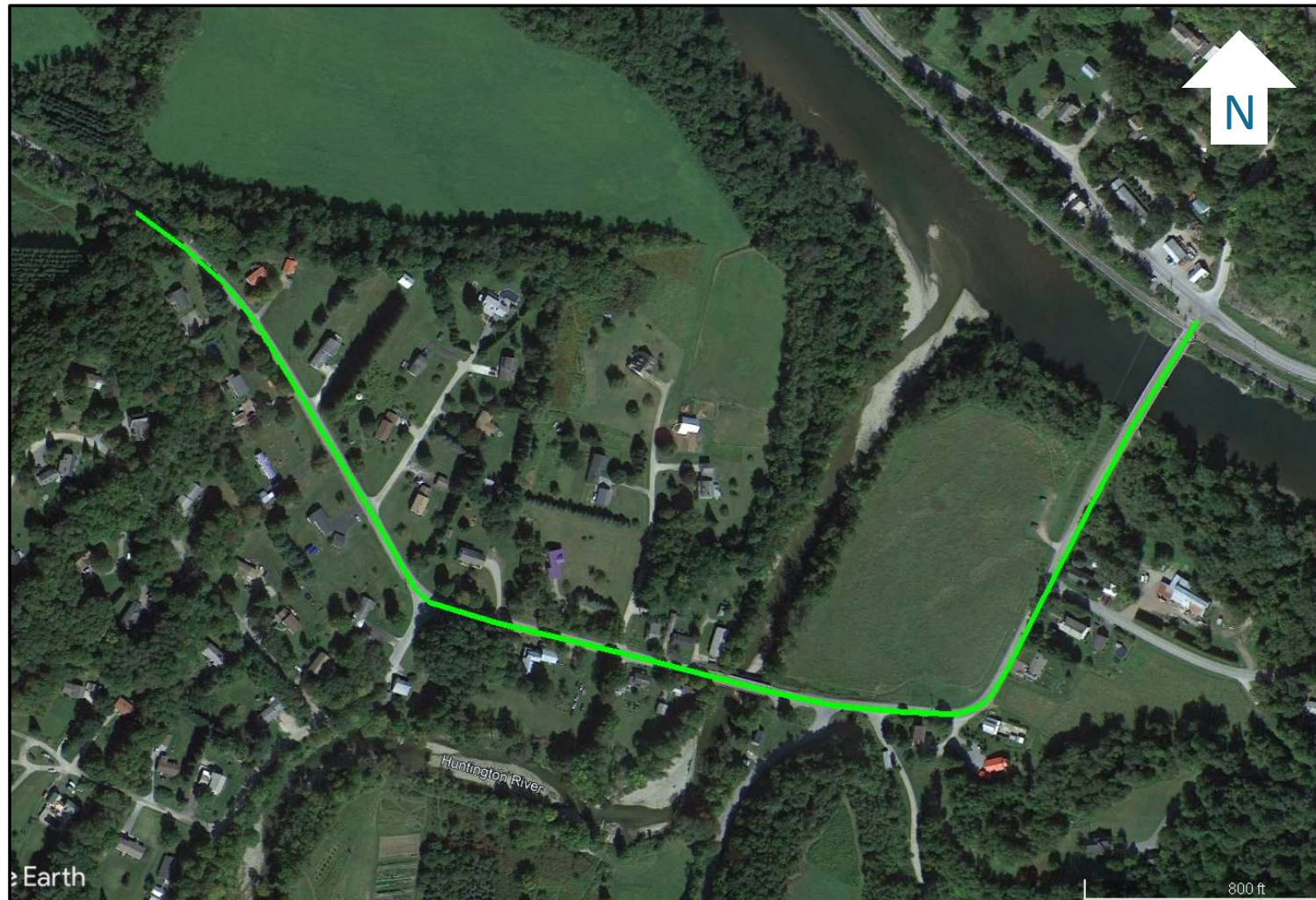
Looking West



CHITTENDEN COUNTY RPC
Communities Planning Together



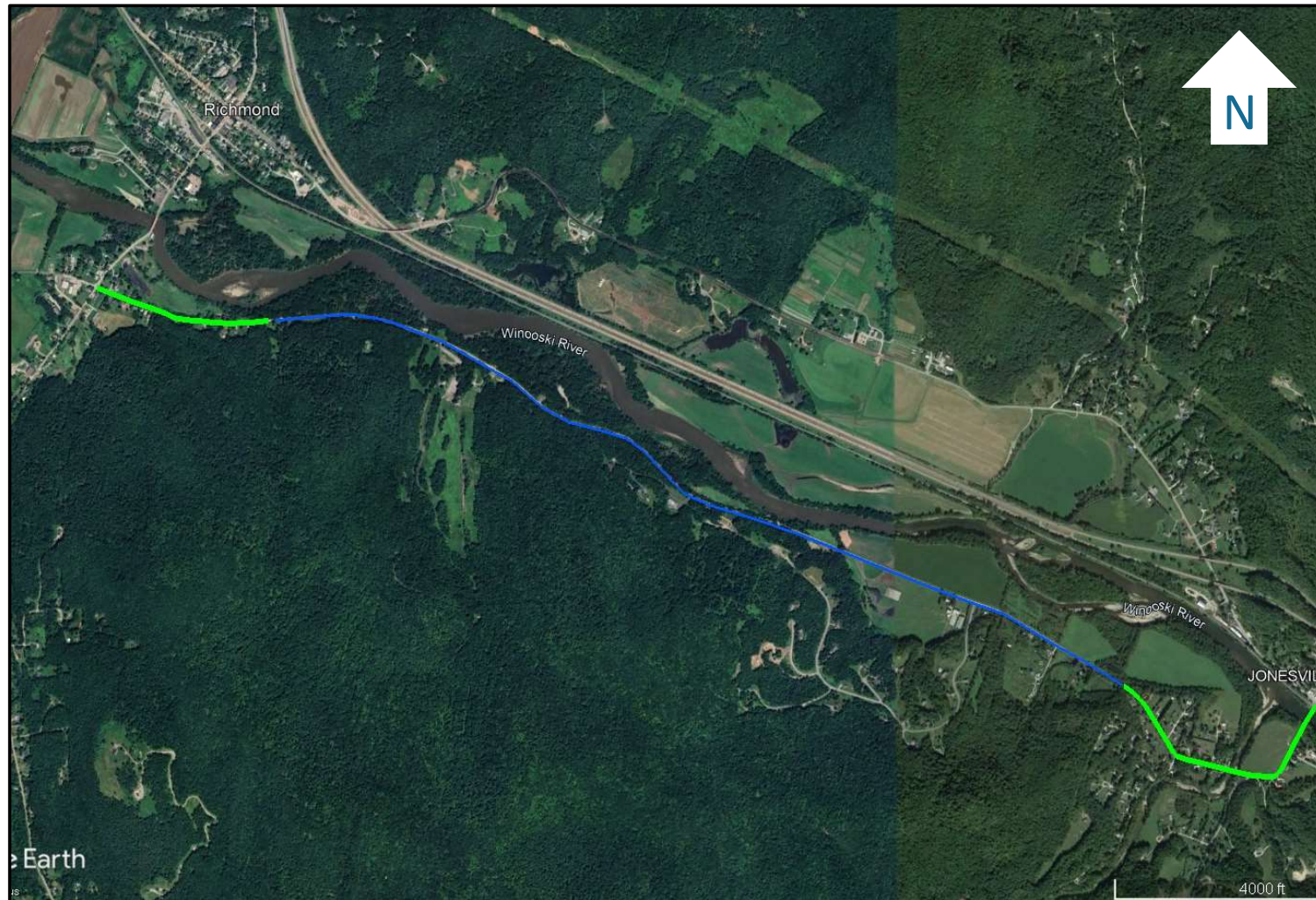
Existing Conditions – Jonesville



Looking East



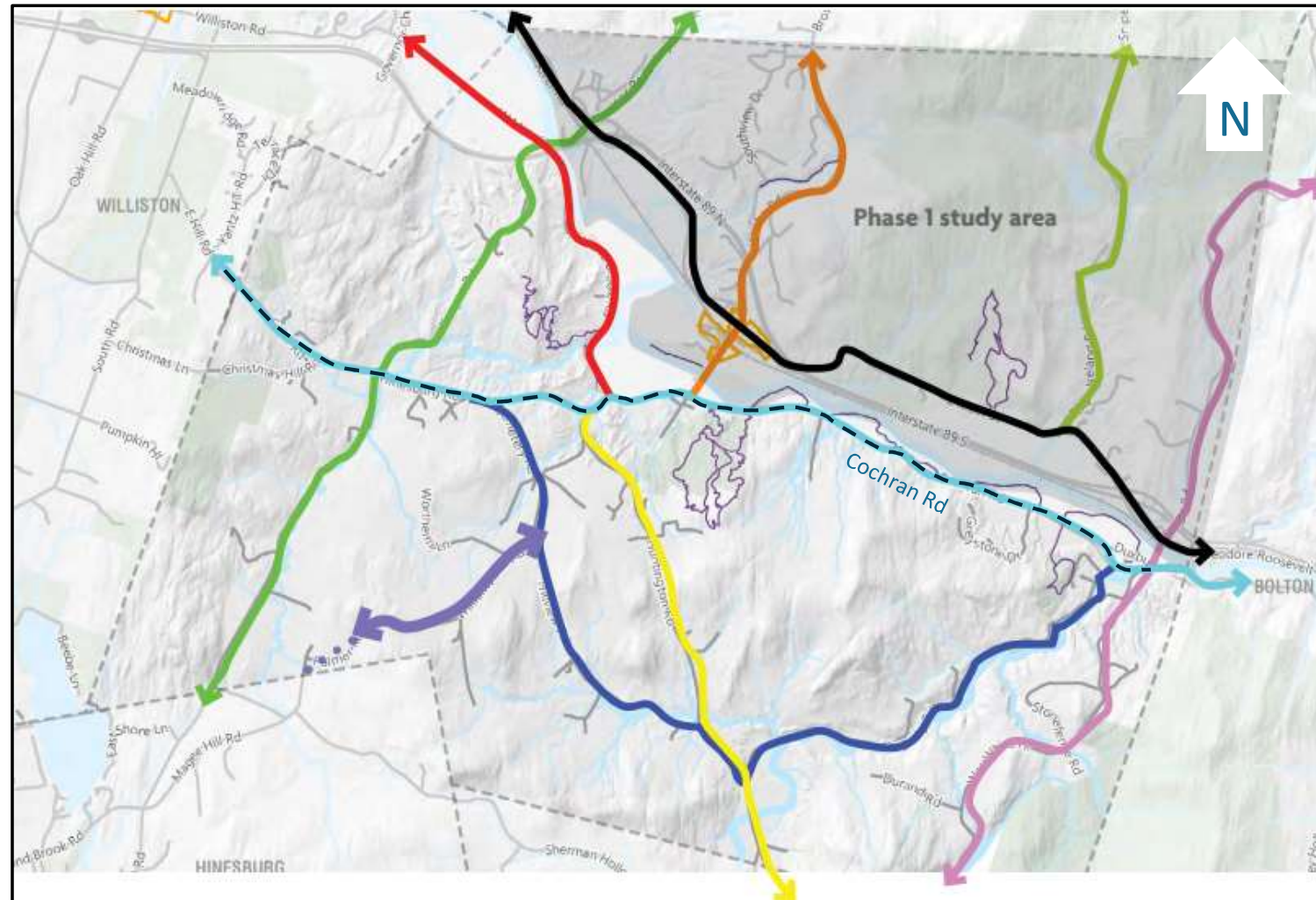
Existing Conditions – Cochran Road



- Length: ~2.5 miles
- Classification: Minor Collector
- Right of way: +/- 49.5 feet (3 rods)
- Pavement width: +/- 22-24 feet
- Lane width: +/- 11 feet (9/2)
- AADT (2020):
 - Daily total – 950 vehicles per day
- Speed limit – 25/45/25 mph
- Designated Truck Route



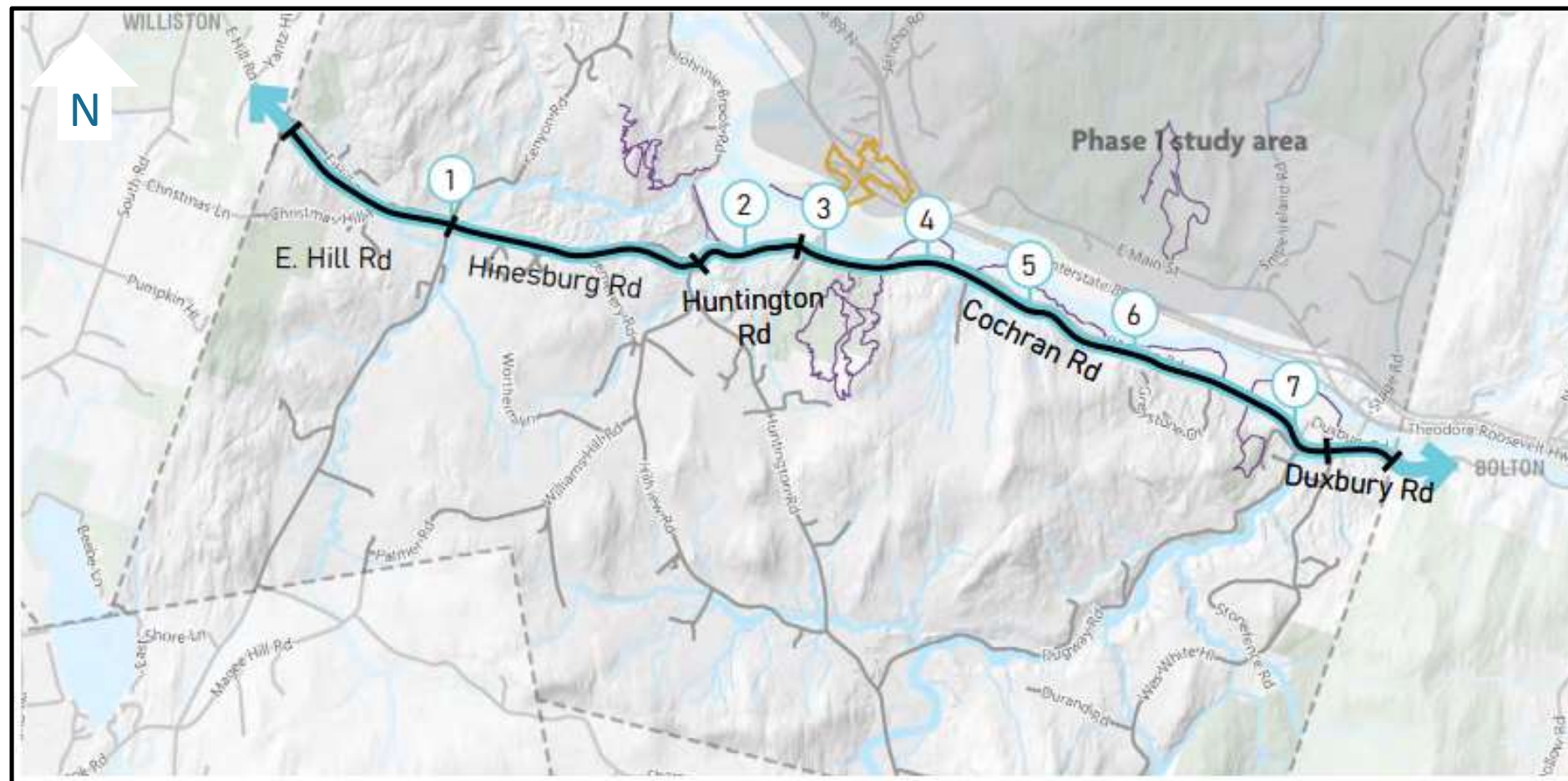
Study Area – Major Travel Corridors



- East-West travel:
 - Duxbury Road
 - Cochran Road
 - Huntington Road
 - Hinesburg Road
 - E. Hill Road



Places & Trails – Cochran Road



- 1 Fays Corner
- 2 Johnnie Brook Trail
- 3 Huntington, Cochran, Thompson, Bridge St Intersection; Farr Complex

Within Study Area Limits:

- 4 Preston Forest Legacy & River Trail Access; Trail Crossing
- 5 Cochran's Ski Area & Trails
- 6A-B Overocker & Beeken Rivershore Parking
- 7 Bombardier Meadow; Trail Crossing

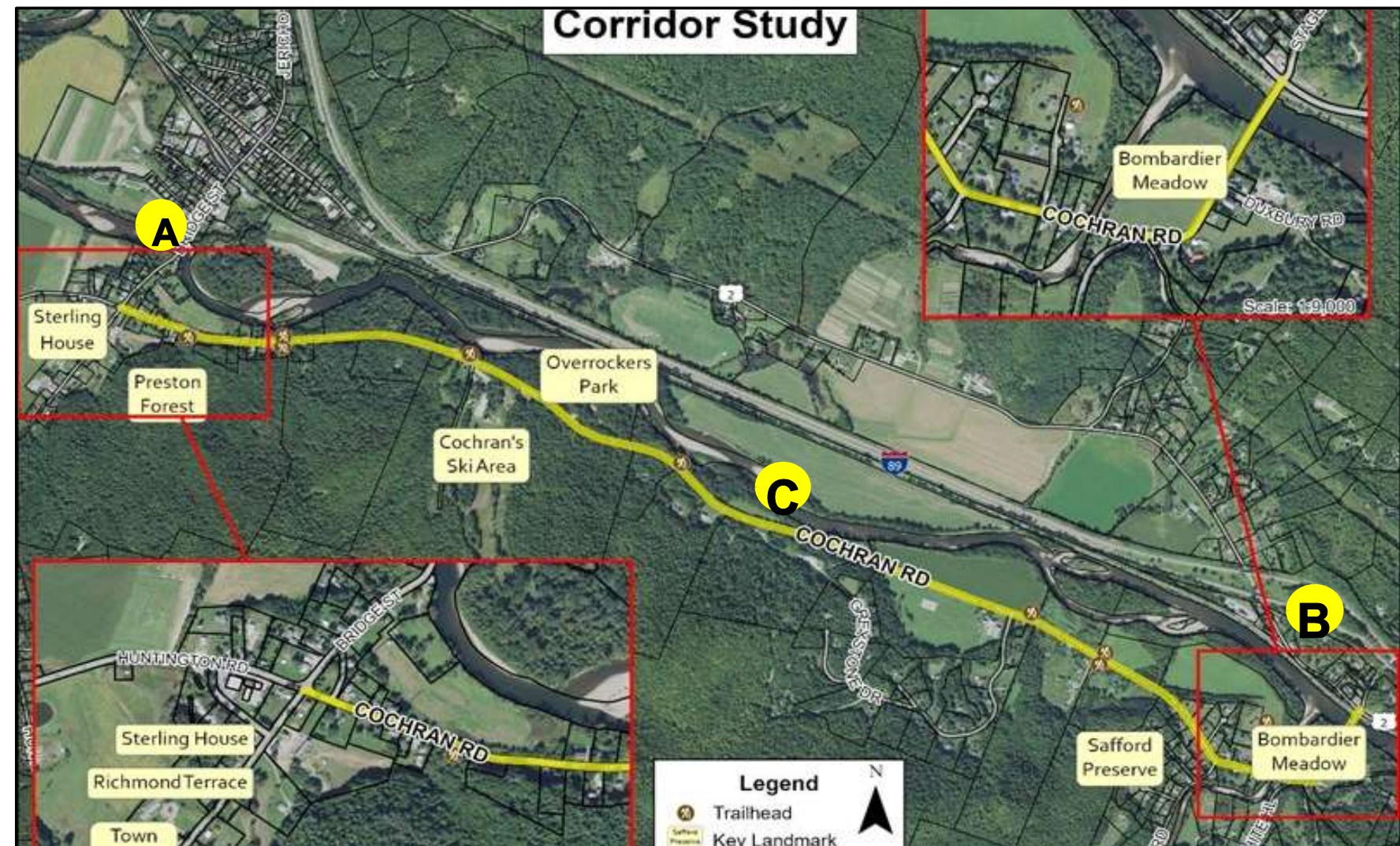




Public Feedback

Discussion

1. *Pedestrians*
2. *Cyclists*
3. *Shared Use Paths*
4. *Parking*
5. *Safety*
6. *Traffic Calming*
7. *Active Transportation*
8. *Trails & Recreation*



Next Steps – how to stay involved

Project Introduction – March 26, 2024

Task 1. Local Concerns Meeting – April 9

Task 2. Village Scoping Study – (April – June)

Task 3. Traffic Calming Priorities – (July – August)

Task 4. Cochran Road Corridor Study – (August – September)

Task 5. Study Recommendations – (September – October)



CHITTENDEN COUNTY RPC
Communities Planning Together



Contact Us!



Jason Charest, PE, PTP
*Senior Transportation Planning
Engineer*
CCRPC
(802) 861-0127
jcharest@ccrpcvt.org



<https://www.richmondvt.gov/>



Annabelle Dally
*Communications & Public Involvement
Manager*

Kevin McCarthy, PE
Senior Transportation Engineer



<https://www.ccrpcvt.org/our-communities/richmond/>



Supplemental Slides