

Richmond

Village Scoping Study

Cochran Road Corridor Study

TUESDAY, APRIL 9, 2024

5:30 PM



CHITTENDEN COUNTY RPC
Communities Planning Together



Agenda

- **Project Overview**
 - Project Team Introduction
 - Project Goals
 - Project Limits/Locus Map
 - Planning Context
- **Existing Conditions**
 - High level overview
 - Roadway and Sidewalk elements
 - Intersection overview
- **Discussion of Opportunities and Concerns**



Project Team



Jason Charest, PE, PTP
Senior Transportation Planning Engineer

Erik Maki, PE, PTO
Senior Director, Traffic Engineering

Kevin McCarthy, PE
Senior Transportation Engineer

Annabelle Dally
Communications & Public Involvement Manager

Zachary Gavel
Transportation Planner



Project Context

- Scoping Study – Village centers; Richmond and Jonesville.
- Corridor Study – Cochran Road; build on the recommendations and alternatives presented in the *Town of Richmond Bike, Walk, and Trails Plan*.
- Traffic Calming – evaluate the temporary traffic calming measures and recommend permanent traffic calming solutions.



Project Goals

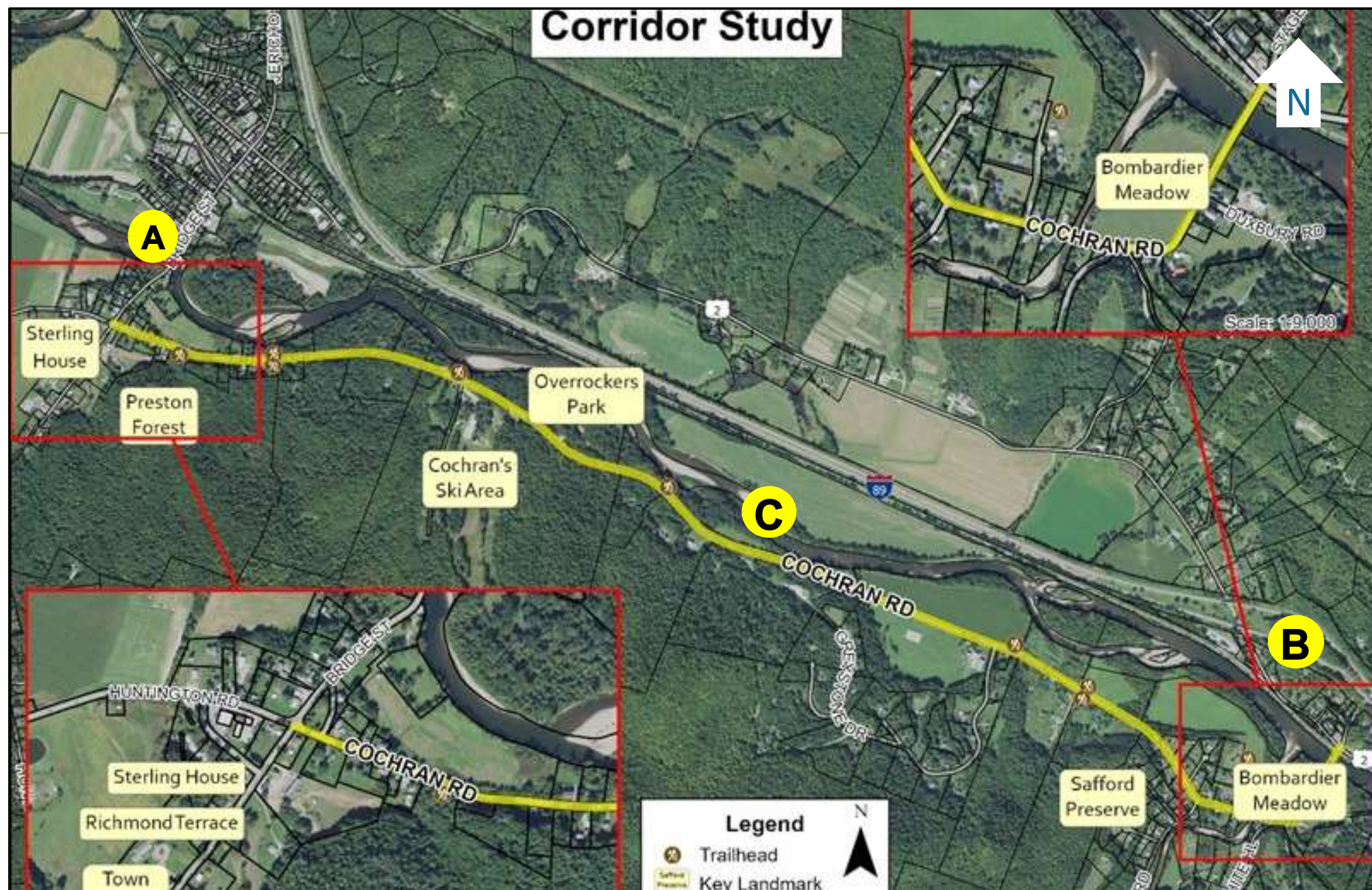
1. Identify new infrastructure such as sidewalks that can be incorporated into the village centers.
2. Identify specific on-road and off-road improvements and multi-modal strategies that address safety, capacity and connectivity for pedestrians and cyclists on Cochran Road.
3. Evaluate the study on temporary traffic calming measures and recommend permanent traffic calming solutions.



Study Area

Project Limits:

- A. Richmond Village
- B. Jonesville
- C. Cochran Road



Slide 6

DAO

Just to confirm, this study only includes the roadway between these intersections correct? If that is the case, I think this is good for context, but we will want to make it clear to the public that the conceptual design for the int
Dally, Annabelle, 2024-03-21T15:20:57.915

ME0 0

No it also includes the two A + B villages
Maki, Erik, 2024-03-21T15:39:20.083

ME0 1

It is a little confusing, but this is the graphic they included in their application to the CCRPC
Maki, Erik, 2024-03-21T15:40:07.951

Review of Previous Studies

2022 RICHMOND BIKE.WALK.TRAILS PLAN

Evaluate options to improve:

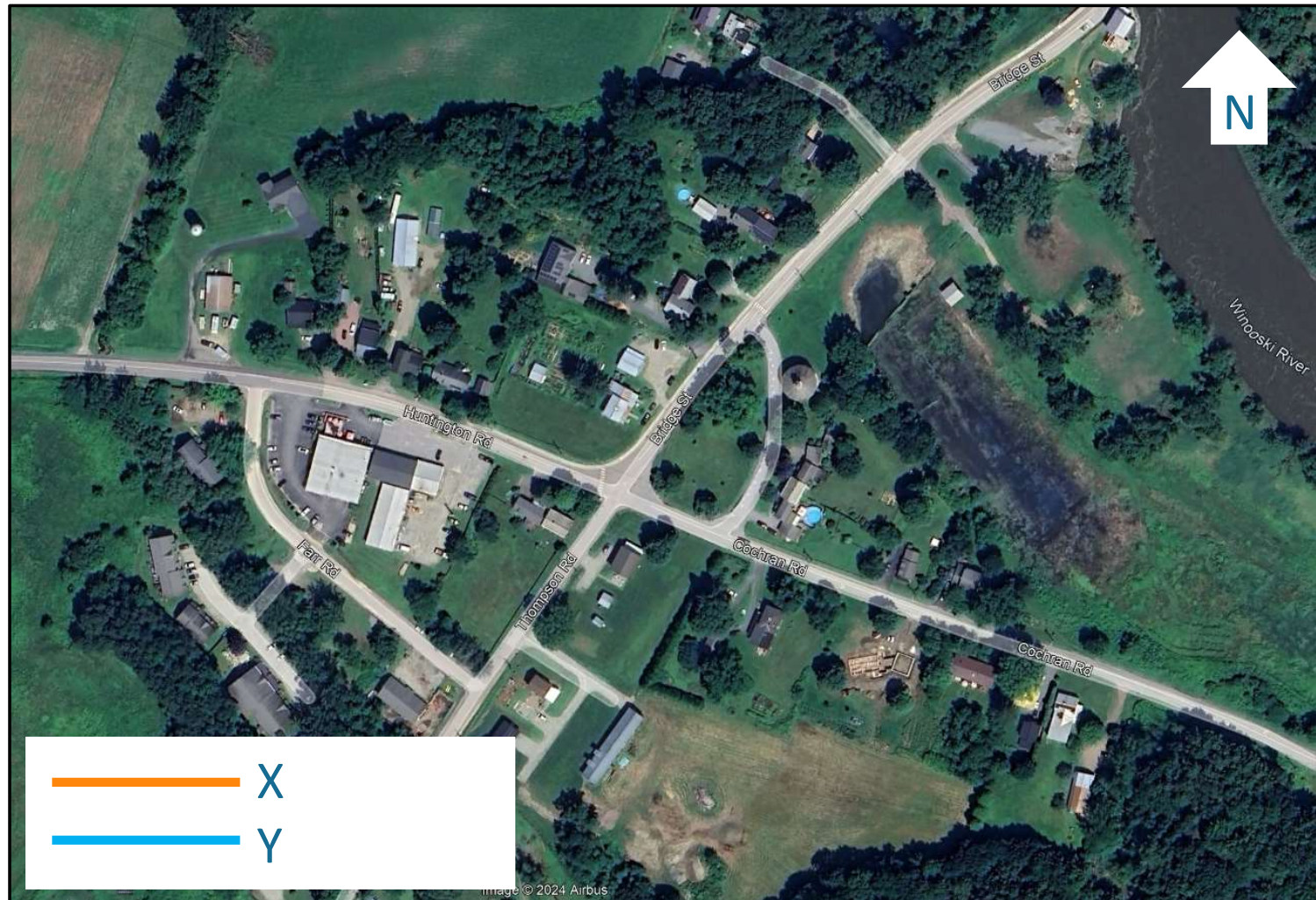
- traffic Calming
- safety
- bicycle/pedestrian connectivity



CHITTENDEN COUNTY RPC
Communities Planning Together



Existing Conditions – Richmond Village



-
-
-
-
-
-

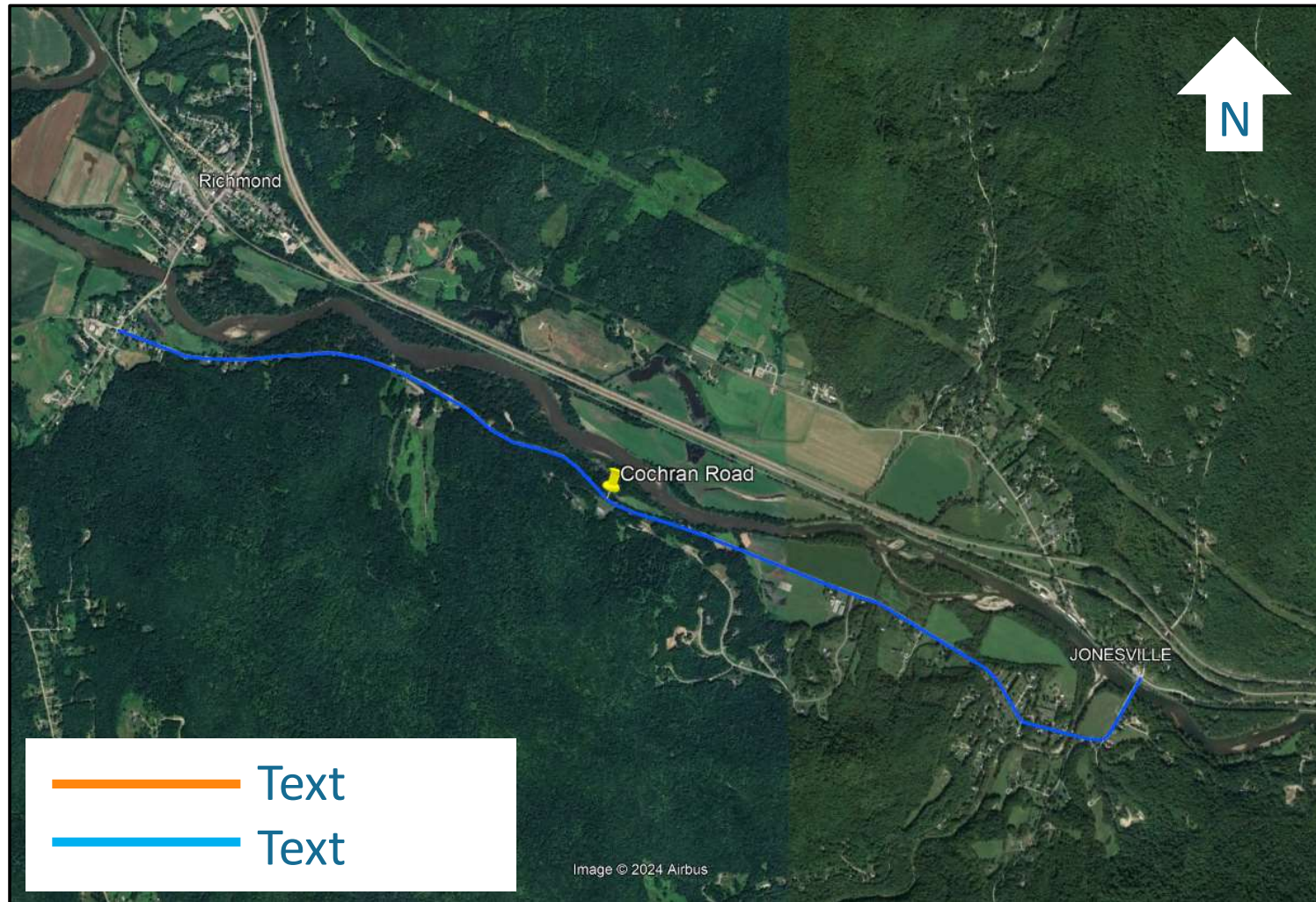


Existing Conditions – Jonesville



-
-
-
-

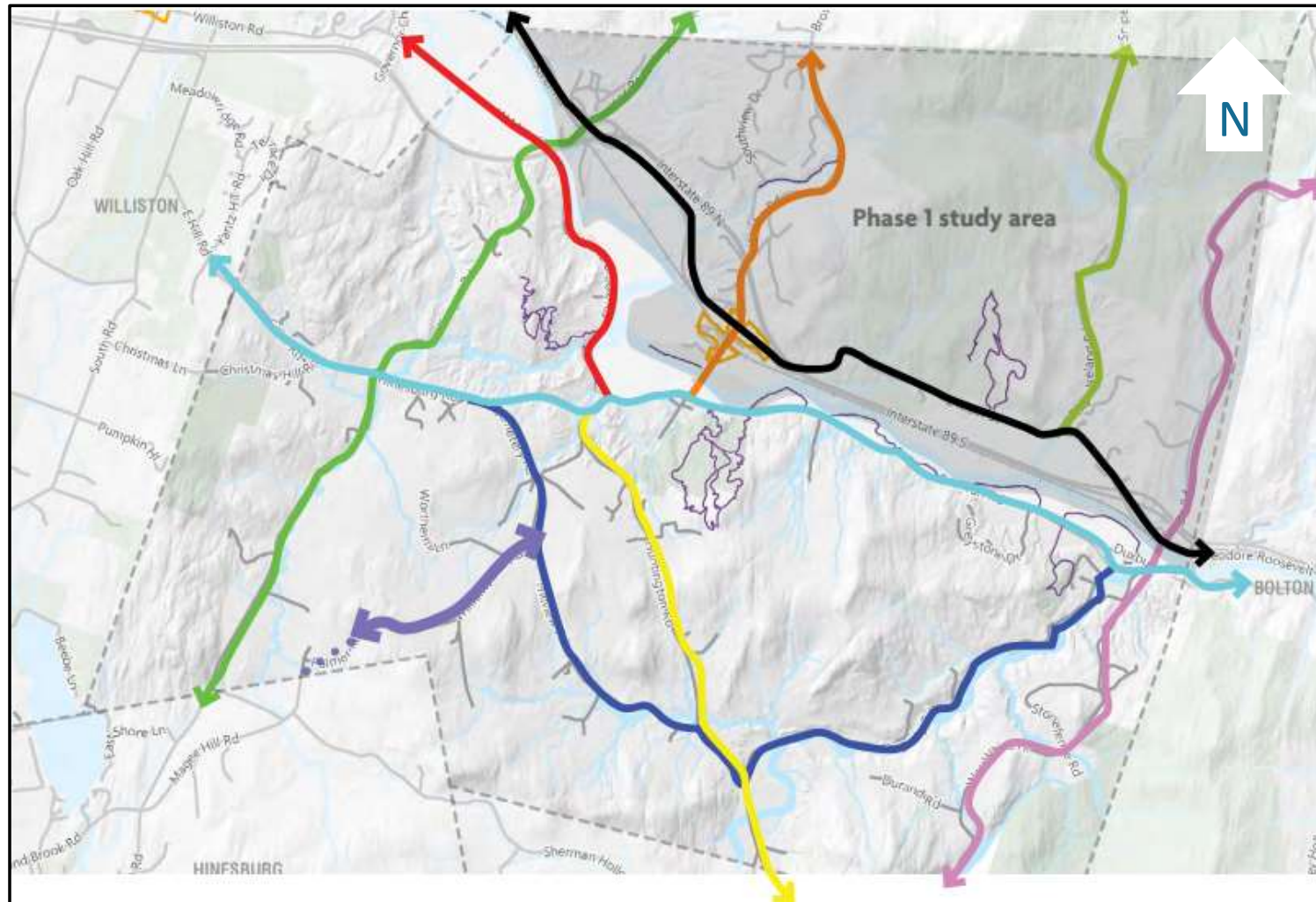
Existing Conditions – Cochran Road



- Right of way: +/- XX feet
- Pavement width: +/- XX feet
- AADT (20XX) :
 - Daily total – x,xxx vehicles per day
 - Northbound – x,xxx vehicles per day
 - Southbound – x,xxx vehicles per day
- Speed limit – XX miles per hour



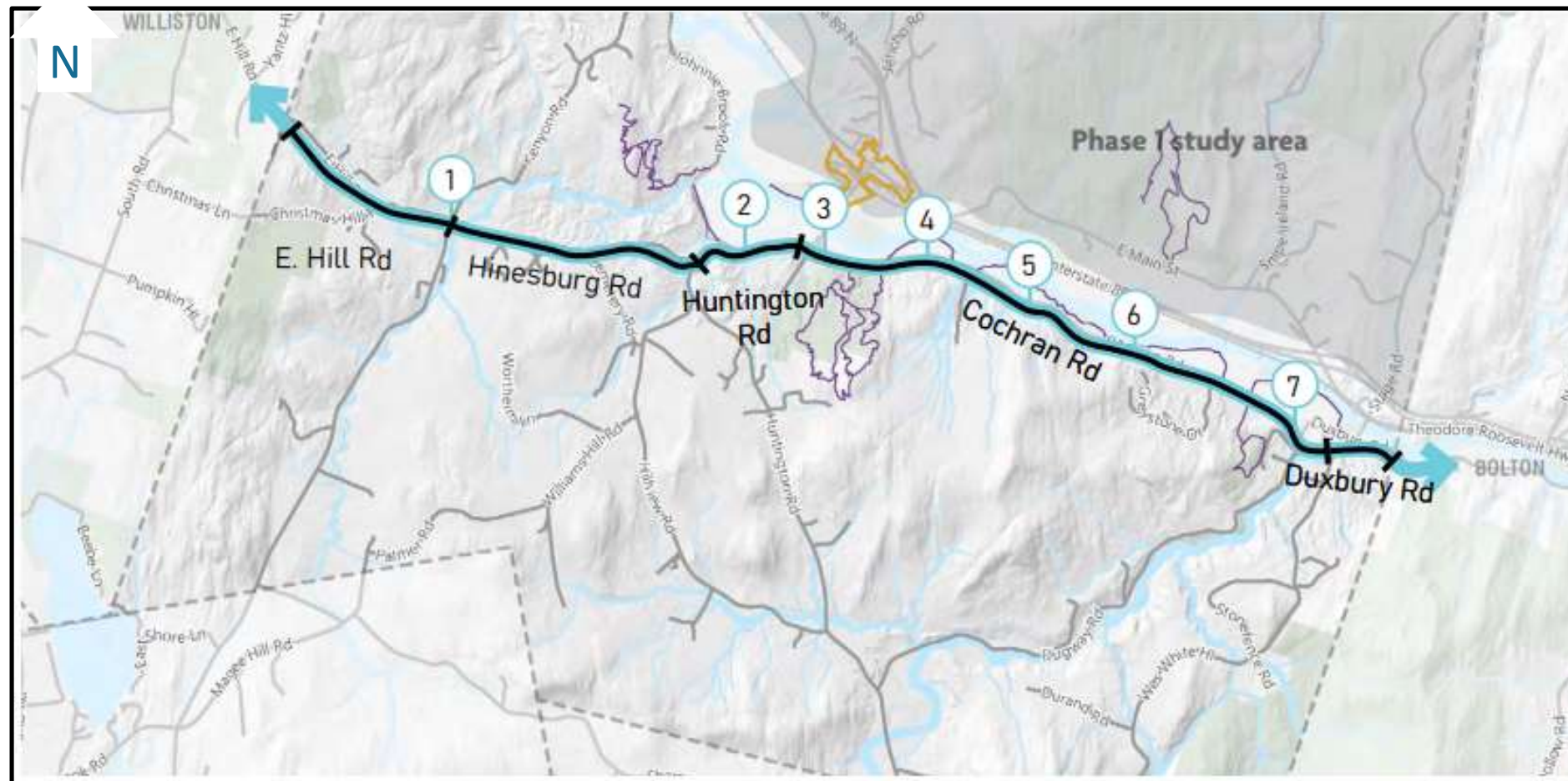
Study Area – Major Travel Corridors



-
-
-
-
-
-
-
-



Places & Trails – Cochran Road



- 1 Fays Corner
- 2 Johnnie Brook Trail
- 3 Huntington, Cochran, Thompson, Bridge St Intersection; Farr Complex
- 4 Preston Forest Legacy & River Trail Access; Trail Crossing
- 5 Cochran's Ski Area & Trails
- 6 Overocker & Beeken Rivershore Parking
- 7 Bombardier Meadow; Trail Crossing

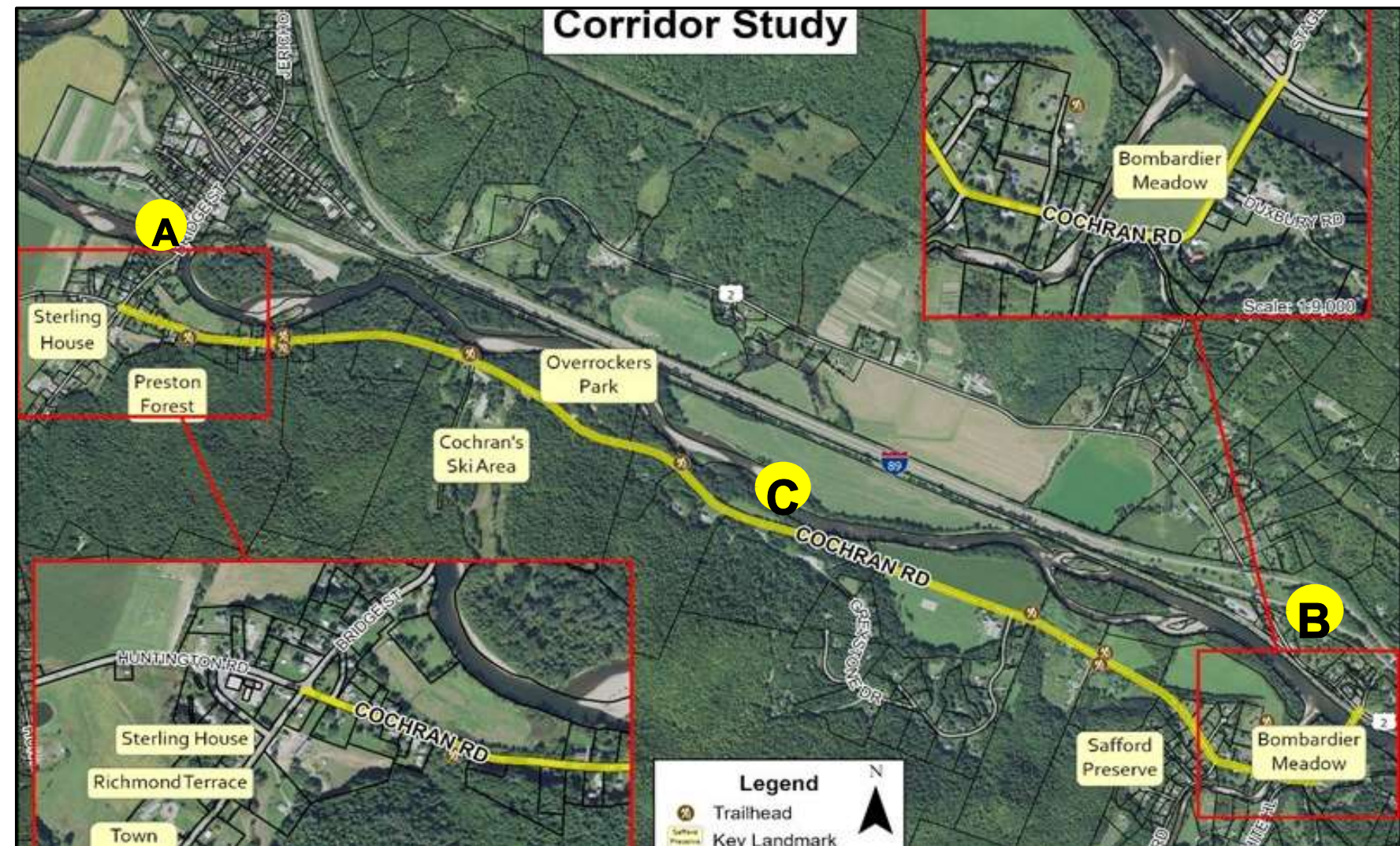




Public Feedback

Discussion

1. Pedestrians
2. Cyclists
3. Shared Paths, connections
4. Parking
5. Safety
6. Traffic Calming



Next Steps – how to stay involved

Project Introduction – March 26, 2024

Task 1. Local Concerns Meeting – April 9

Task 2. Village Scoping Study – (April – June)

Task 3. Traffic Calming Priorities – (July – August)

Task 4. Cochran Road Corridor Study – (August – September)

Task 5. Study Recommendations – (September – October)



Slide 15

DA0

You don't need to do this now. But I think it is helpful for the public to see the full picture including what the project team is doing behind the scenes, advisory meetings, and most important public participation opportunities

Dally, Annabelle, 2024-03-21T15:06:01.721

Contact Us!



Jason Charest, PE, PTP
*Senior Transportation Planning
Engineer*
CCRPC
(802) 861-0127
jcharest@ccrpcvt.org



Kevin McCarthy, PE
Senior Transportation Engineer

WSP USA
(617) 531-8178
Kevin.McCarthy@wsp.com



Annabelle Dally
*Communications & Public Involvement
Manager*
WSP USA
(802) 825-2555
Annabelle.Dally@wsp.com



<https://ccrpcvt.org/Cochran Road>



CHITTENDEN COUNTY RPC
Communities Planning Together





Supplemental Slides