



Richmond
VERMONT

**Thompson Rd, Huntington Rd, Bridge St,
Cochran Rd Intersection**

Richmond Transportation Committee

April 1, 2024

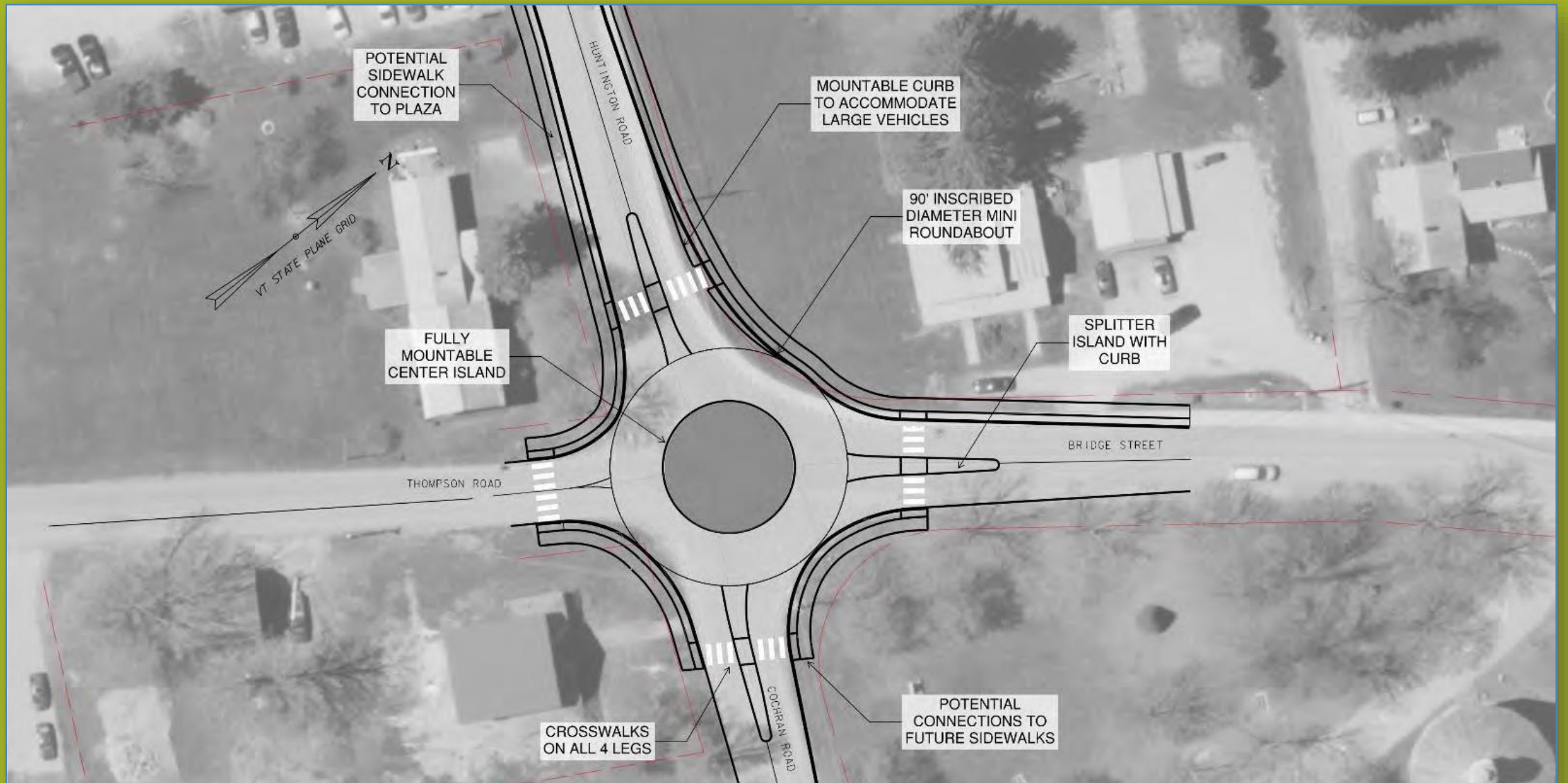
Richmond Transportation Committee

- Established 2019.
- Works to implement the town plan related to roads, sidewalks, paths, public transit and services.
- Collaborates with the Selectboard, other town committees, CCRPC, VTrans, Highway Department.
- Develops grant applications, designs, plans and public engagement.
- **2021 Bridge Street Complete Streets Corridor Study**

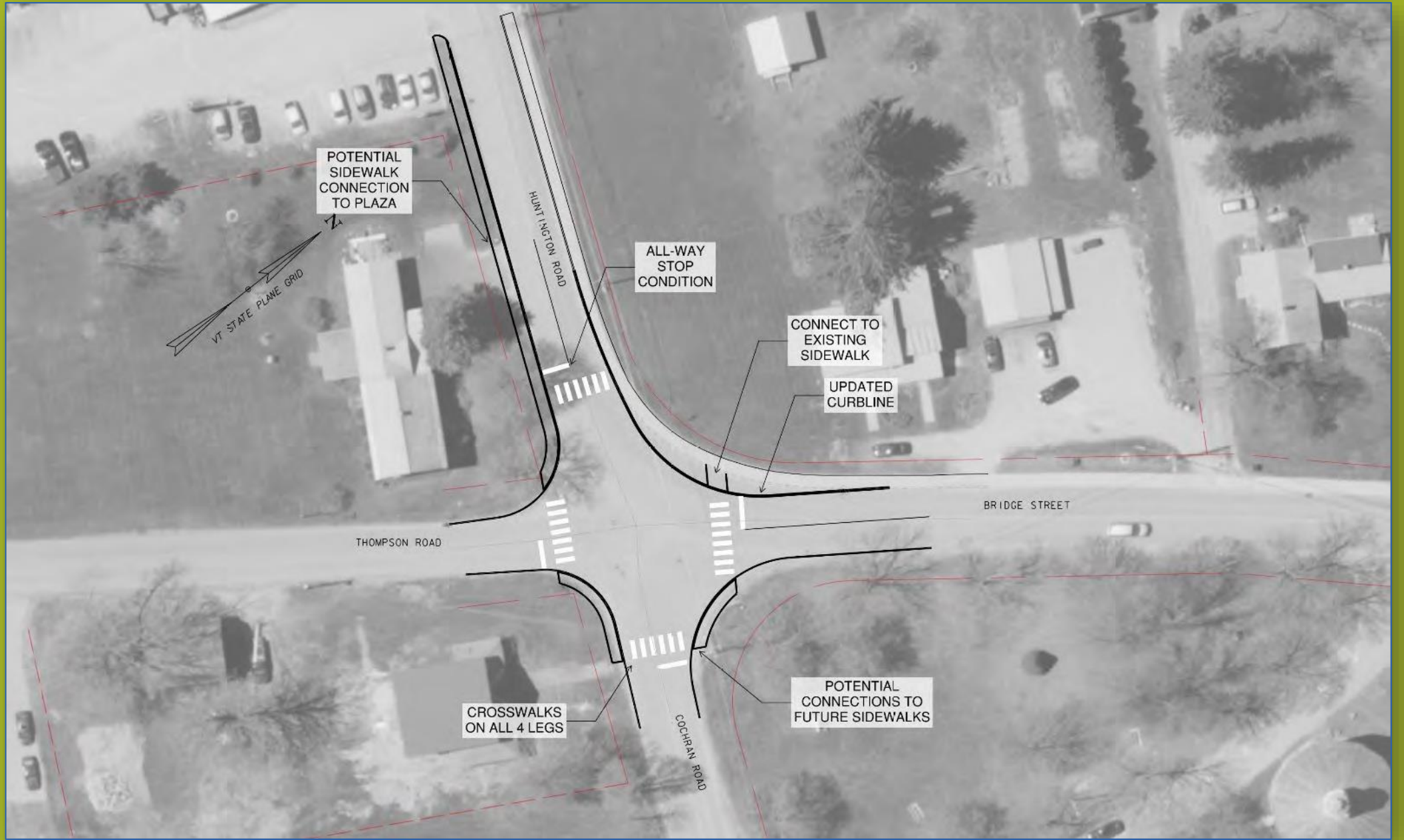
Thompson-Hinesburg-Bridge-Cochran: Current Design



Roundabout—preferred...but too costly



Alt-1 Four-Way Stop



Four-Way Stop

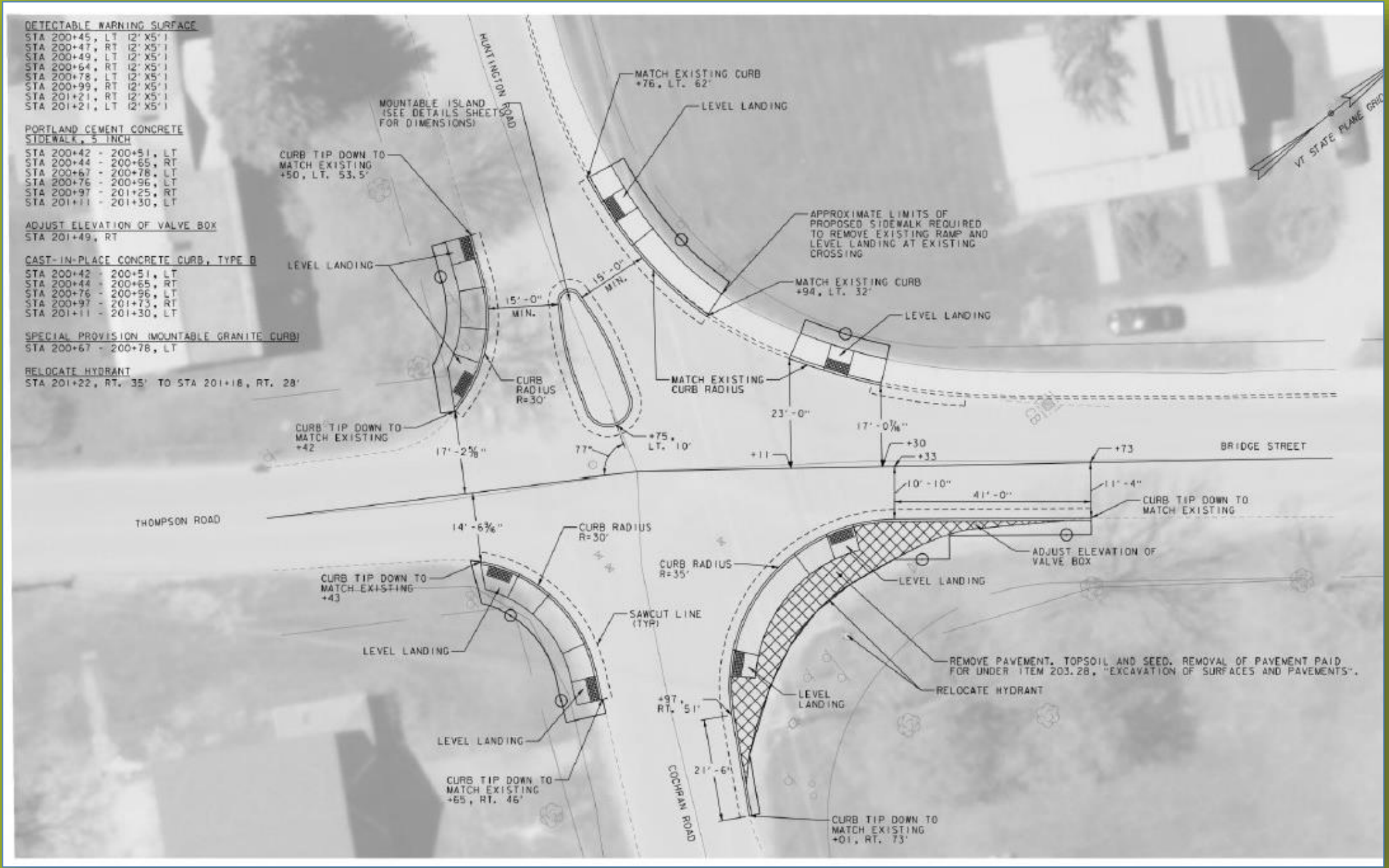
Pros

- Least expensive option.
- Easily understandable for motorists.
- Ensures cars will stop making it the safest alternative for pedestrians and bicyclists.

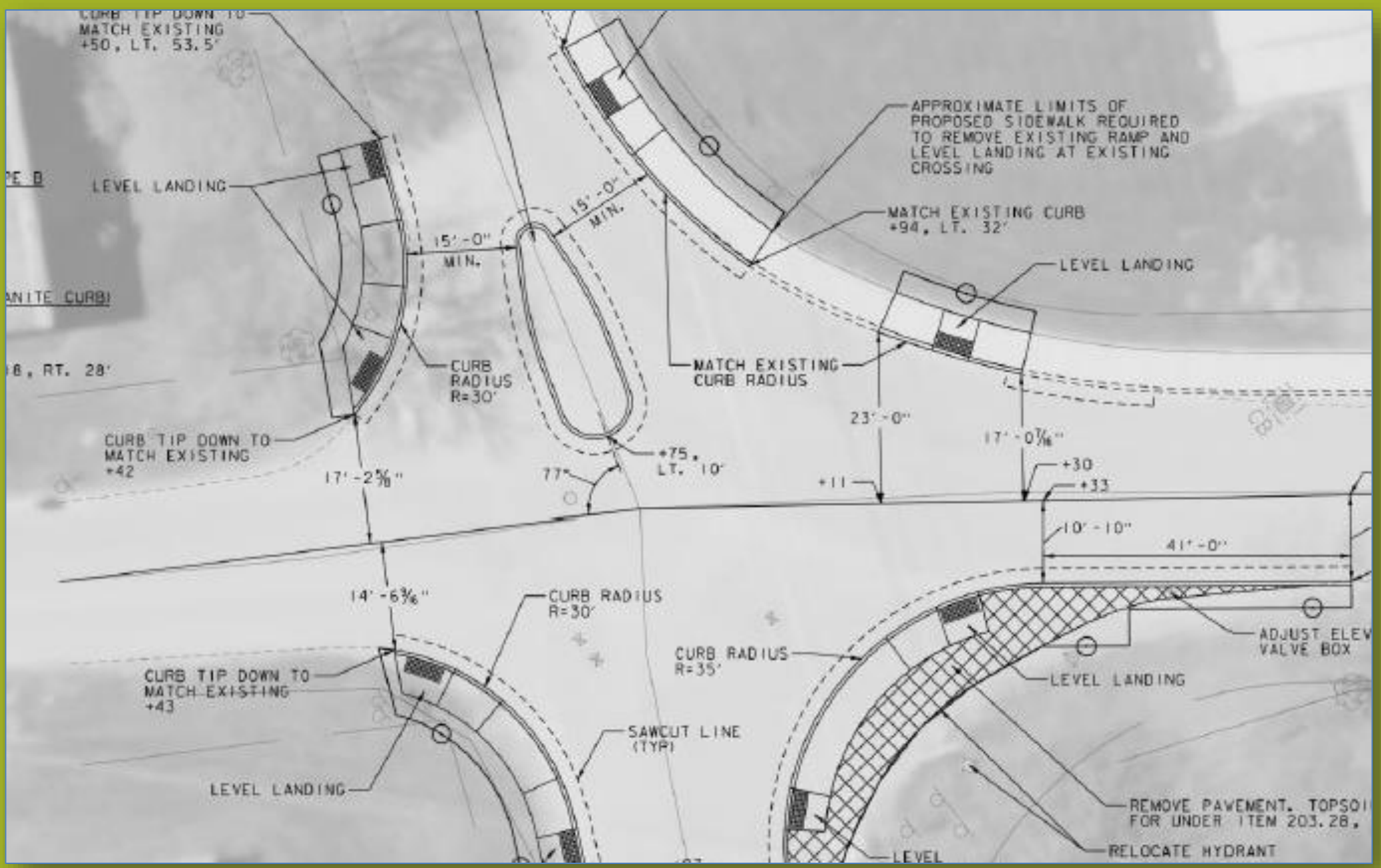
Cons

- ~5,400 vehicles use this intersection daily. Requires stops 24hrs/day, 365 days/year, including times of day/night and year when few, if any, pedestrians, or bicyclists would be present.
- Added noise/vibrations from trucks starting/stopping.
- Could further delay the morning commute along Bridge St.

Alt-2 Mount- able Island



Alt-2 Mount- able Island



Mountable Island

- Island slows, but does not stop traffic flow between Bridge St. and Huntington Rd.

Pros

- Sidewalks are helpful for pedestrians waiting to cross; currently no place to stand at some corners.
- Squares-up the approach from Cochran Rd to Bridge St.

- More expensive.

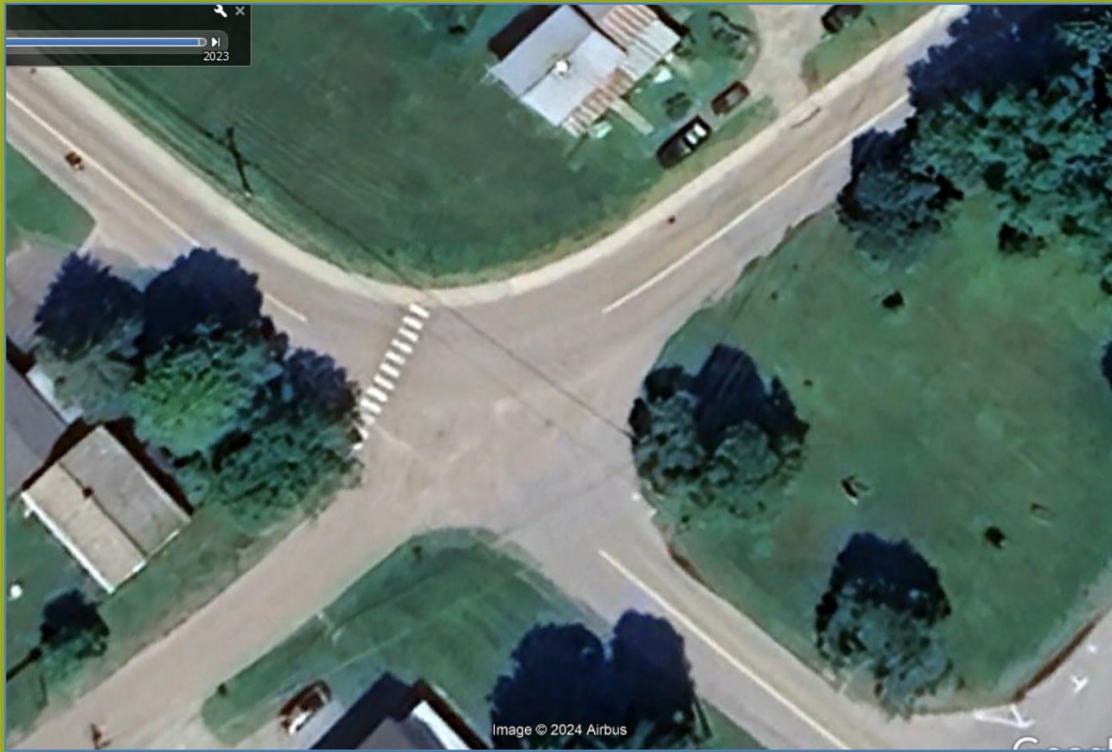
Cons

- Less effective at protecting pedestrians and bicyclists.
- Does not normalize the right-of-way.

Cost Estimates

Cost Estimate*	1: Four-way stop	2: Mountable Island
Original per VHB	Base Cost: \$100,000	Base Cost: \$72,700
Raised Crosswalks	not needed	\$2.5k to \$8k ea Huntington Rd near Thompson Rd.
Speed table	\$2.5k to \$8k ea, Huntington Rd near Farr Rd	\$2.5k to \$8k ea, Huntington Rd near Farr Rd
Sidewalk: THBC to Business Complex	\$21,000 to \$30,000	\$21,000 to \$30,000
Streetlights	\$500 ea fixture. One or two recommended	\$500 ea fixture. One or two recommended
Crossing flashers	not needed	~\$6.4k per unit. Installation ~\$20k-\$30k each at locations per engineer's design

Next Steps



- **The Selectboard should consider a public meeting before selecting a preferred alternative.**
- **Neighbors could be invited to the public meeting.**
- **The Transportation Committee can help with grant applications to fund implementation.**