

# Important Reminder

---

Dear Landowner,

The Town of Richmond, in conjunction with the Vermont Water Supply Division, enacted in 1996 a program to protect the drinking water supply source used by the Richmond water department's approximately 1,000 customers. Your property is located within the water supply source protection area.

Ground water is the town's drinking water supply source and is generally of high quality. However, it is vulnerable to contamination from a wide range of activities that take place on the ground's surface. Once the ground water is contaminated it is difficult and expensive to clean, possibly resulting in the abandonment of the well and the need for a second source.

The Water Commissioners for the Town of Richmond fully support the current program of protection, which includes an ordinance and public information mailings. These efforts are designed to reduce the risk of contamination. It is especially important that activities within this source protection area, primarily residential and agricultural uses, do not discharge contaminants that may threaten the ground water used for human consumption. See the attached map showing the shaded protection area.

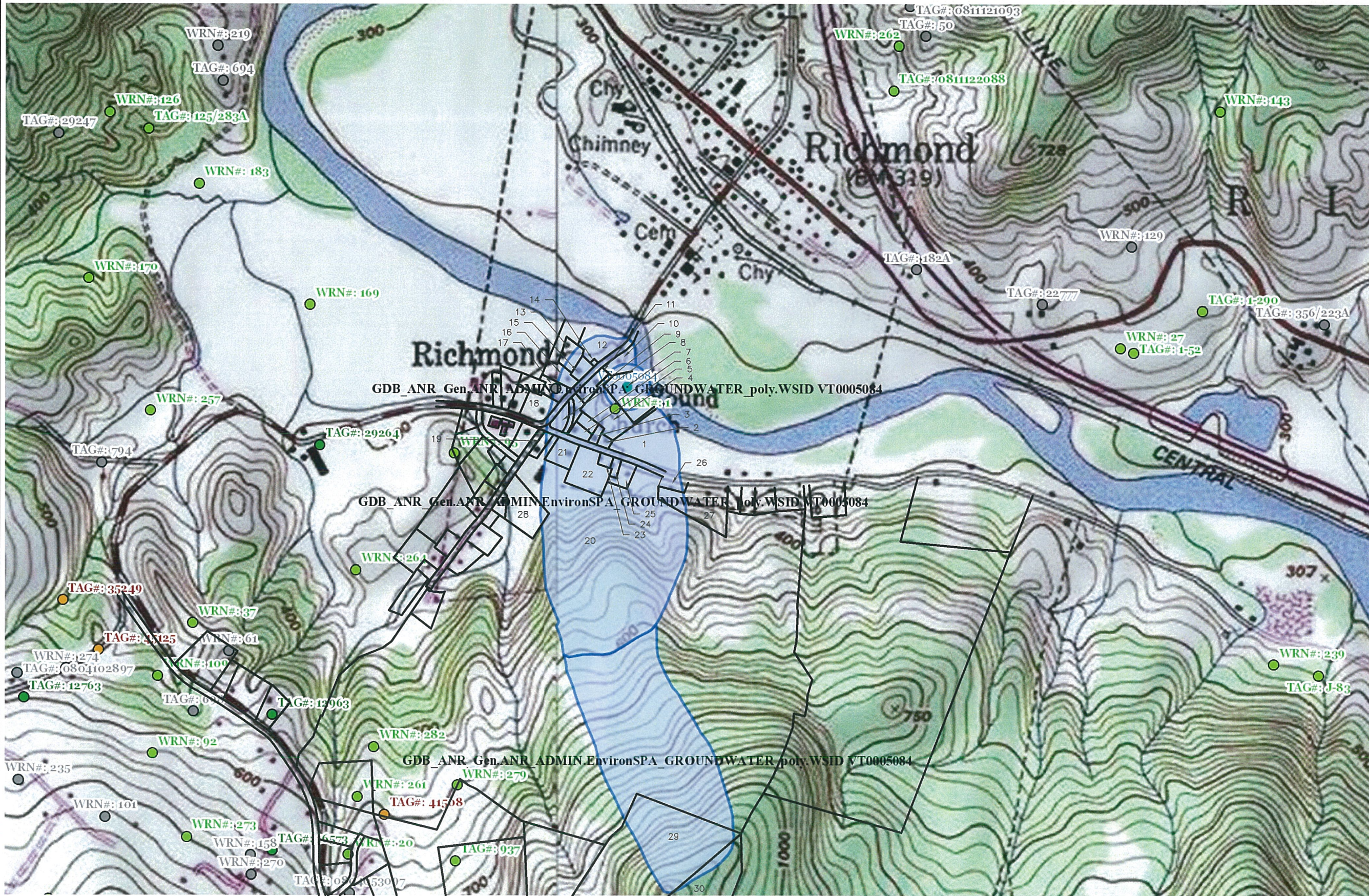
We are asking you to do your best to minimize the release of contaminants in the source protection area that could threaten our ground water supply. This includes taking extra precaution with household chemicals such as de-icing salts, heating fuels, lawn fertilizers, antifreeze and gasoline. When not being used, these items should be kept inside and in proper containers. Spills should be cleaned up immediately so that the risk of contaminating the ground water is minimized. Spills should be reported immediately to my office or the Water Department at 802-434-2178 so that we may assess the potential risk and advise you of any additional steps to protect the water quality.

Please dispose of used motor oils or other hazardous waste materials through the Chittenden Solid Waste District "Rover" program or at one of their regional collection points. More information on proper waste disposal methods are available through CSWD at 802-872-8111 or [www.cswd.net](http://www.cswd.net).

If you have any questions at all, wish to receive a copy of the current ordinance or want to discuss this letter, please call me at 802-434-5170 or via e-mail at [jarneson@richmondvt.gov](mailto:jarneson@richmondvt.gov)

Sincerely,

Josh Arneson  
Richmond Town Manager

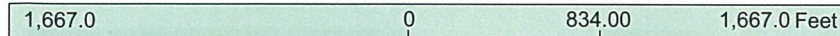


**LEGEND**

- Private Wells**
  - GPS Location; Field Located with GPS - Uncon
  - Screen Digitized
  - E911 Address
  - Unknown
  - Welldriller/Clarion
- Public Water Sources**
  - Active
  - Proposed
  - Inactive
- SurfaceWaterSPA**
- GroundWaterSPA**
  - ACTIVE
  - PROPOSED
- Groundwater Classification**
  - II - Designated Drinking Water
  - IV - Contaminated
- Town Boundary**

REFERENCE #	TAX MAP I.D. #
1	CO0280,b
2	CO0105
3	CO0091
4	BR0401,c
5	RC0045
6	RC0047
7	BR0431
8	RC0030
9	RC0025
10	BR0401,a
11	BR0457
12	BR0401,b
13	OB0044
14	BR0430
15	OB0023
16	BR0506
17	BR0520
18	BR0552
19	CO0004
20	CO0280,a
21	CO0044
22	CF0500
23	CO0110
24	CO0124
25	CO0142
26	CO0220
27	BR0401,d
28	TR0085
29	GV0401
30	GV0486

**1: 10,000**  
1in = 833 ft.  
1cm = 100 meters



DISCLAIMER: This map is for general reference only. Data layers that appear on this map may or may not be accurate, current, or otherwise reliable. ANR and the State of Vermont make no representations of any kind, including but not limited to, the warranties of merchantability, or fitness for a particular use, nor are any such warranties to be implied with respect to the data on this map.

**NOTES**

Map created using ANR's Natural Resources Atlas and Richmond, VT Tax Maps

THIS MAP IS NOT TO BE USED FOR NAVIGATION