

Boundary Validation Program

What is the 2020 Boundary Validation Program (BVP)?

The BVP provides Tribal Chairs (TCs) and Highest Elected Officials (HEOs) of eligible tribal, state, and local governments a final opportunity to ensure the U.S. Census Bureau has the correct legal boundary, name, and status for their government. The Census Bureau will use this information to tabulate data for the 2020 Census.



The BVP validates the creation, dissolution, and changes in boundaries for:

- All federally recognized tribes with reservations and/or off-reservation trust land.
- All actively functioning counties or county equivalents.
- Incorporated places (including consolidated cities).
- All functioning minor civil divisions.
- Municipios, barrios, barrio-pueblos and subbarrios in Puerto Rico.

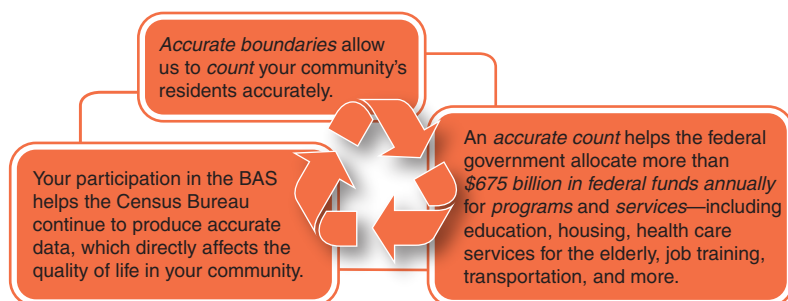
How does the BVP relate to Boundary and Annexation Survey (BAS)?

The BVP is conducted every (10) years to provide TCs and HEOs the opportunity to review the boundary data collected during the BAS. The program is administered in two phases (Initial BVP and Final BVP) and runs in parallel with the 2020 BAS. TCs and HEOs will receive BVP materials approximately (2) weeks after the BAS contact receives the 2020 BAS annual response e-mail or letter. This provides TCs and HEOs an opportunity to review their legal boundary to verify or provide corrections prior to the 2020 Census. If boundary corrections are required, TCs and HEOs are instructed to work with their BAS contact to provide updates through the 2020 BAS.

How does the BVP benefit you?

The U.S. Census Bureau uses legal boundaries collected through the BAS to tabulate data for the 2020 Census.

Responding to the BVP ensures that tribal, state, and local governments have the most accurate boundary data available for the tabulation of the 2020 Census housing and population counts. This data is the base for ongoing programs such as the American Community Survey and Population Estimates Program. Government agencies and other groups use this tabulated data to allocate \$675 billion of government funds to communities across the country. Legal boundary data is also made publicly available and is used by federal agencies, researchers, and the public.



What is the Boundary and Annexation Survey (BAS)?

Every year, the Census Bureau conducts the BAS to collect information about selected legally defined geographic areas. The BAS invites governments to report official name changes, (dis) incorporations, and (de) annexations. Governments can also update boundaries, features, and landmarks for:

- Federally recognized tribes with reservations or off-reservation trust lands.
- Cities, towns, boroughs, and villages (incorporated places).
- Townships and towns (minor civil divisions).
- Counties (or county equivalents).
- Consolidated cities.
- Roads and other applicable features.

Contact Information

E-mail Address:

geo.bas@census.gov

Phone Number: 1-800-972-5651

Web site:

<https://www.census.gov/programs-surveys/bas/information/bvp.html>

How to participate?

The BVP is conducted in two phases, [Initial BVP](#) and [Final BVP](#). During each of these phases, TCs and HEOs are instructed to work with their BAS contact to review and update their government's boundary, name, and status information. TCs and HEOs do not need to register to participate in BVP. The materials will be provided automatically.

Initial BVP

The Initial BVP materials include an Initial BVP letter, form, and paper maps or a CD/DVD containing PDF maps. The maps should reflect the legal boundary for the government effective on January 1, 2020. TCs and HEOs are instructed to review the Census Bureau's depiction of the legal boundary for accuracy and to return the completed Initial BVP form by March 1, 2020.

If the information is correct, no further action is required.

If any information is incorrect, TCs and HEOs should work with their BAS contact to submit corrections through the 2020 BAS. If boundary updates are submitted to the BAS by March 1, 2020, TCs and HEOs will have an additional opportunity to verify their government's boundary prior to final data tabulation for the 2020 Census. Changes received after March 1, 2020 will be used to correct the boundary, but there will not be sufficient time to send updated maps before final data tabulations for the 2020 Census.

Final BVP

The Final BVP provides an opportunity for TCs and HEOs to review recent boundary updates provided through the 2020 BAS. Only governments that reported corrections to the 2020 BAS on or before March 1, 2020 will receive Final BVP materials. The Final BVP materials include a Final BVP letter, form, and a paper map or map index sheet. The maps should reflect the legal boundary for the government effective on January 1, 2020. TCs and HEOs are instructed to review the Census Bureau's depiction of the legal boundary for accuracy and to return the completed Final BVP within five (5) business days.

If the boundary is correct, no further action is required.

If any information is incorrect, TCs and HEOs should work with their BAS contact to submit corrections, within five (5) business days of receipt of materials.

Responding with boundary updates is easy.

The Census Bureau provides multiple free, user-friendly methods for the BAS contact to report boundary corrections through participation in BAS.

- [Paper option](#): Participants can request free paper maps and annotation materials from the BAS Web site.
- [Basic digital option](#): The Geographic Update Partnership Software (GUPS) is a free, customized Geographic Information Systems (GIS) tool. It was specifically developed for people who do not have geographic training or are not experienced GIS users. Please note that the GUPS option will not be available to report boundary updates during the Final BVP phase.
- [Advanced digital option](#): Experienced GIS users have the opportunity to download shapefiles from the BAS Web site and make updates using their own GIS software (e.g., ArcGIS).



Schedule

- January 1, 2020—Legal boundary updates must be in effect on or before this date to be included in the 2020 Census.
- January 2020—BAS and Initial BVP materials will be mailed.
- March 1, 2020—Boundary updates submitted by this date will receive Final BVP materials to provide governments an opportunity to confirm that the correct legal boundary is used for 2020 Census data tabulations.
- May 31, 2020—Boundary updates sent by this date will be reflected in the 2020 Census.
- June 2020—Final BVP materials will be mailed. Participants have until July 2020 to respond with updates or approval of the legal boundaries.

