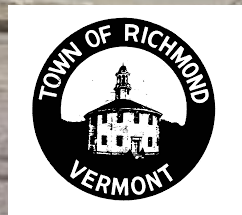




# Bridge Street Corridor Study

## Selectboard Meeting

June 21, 2021



# Agenda



Review Study Area



Purpose & Need Statement



Project Process

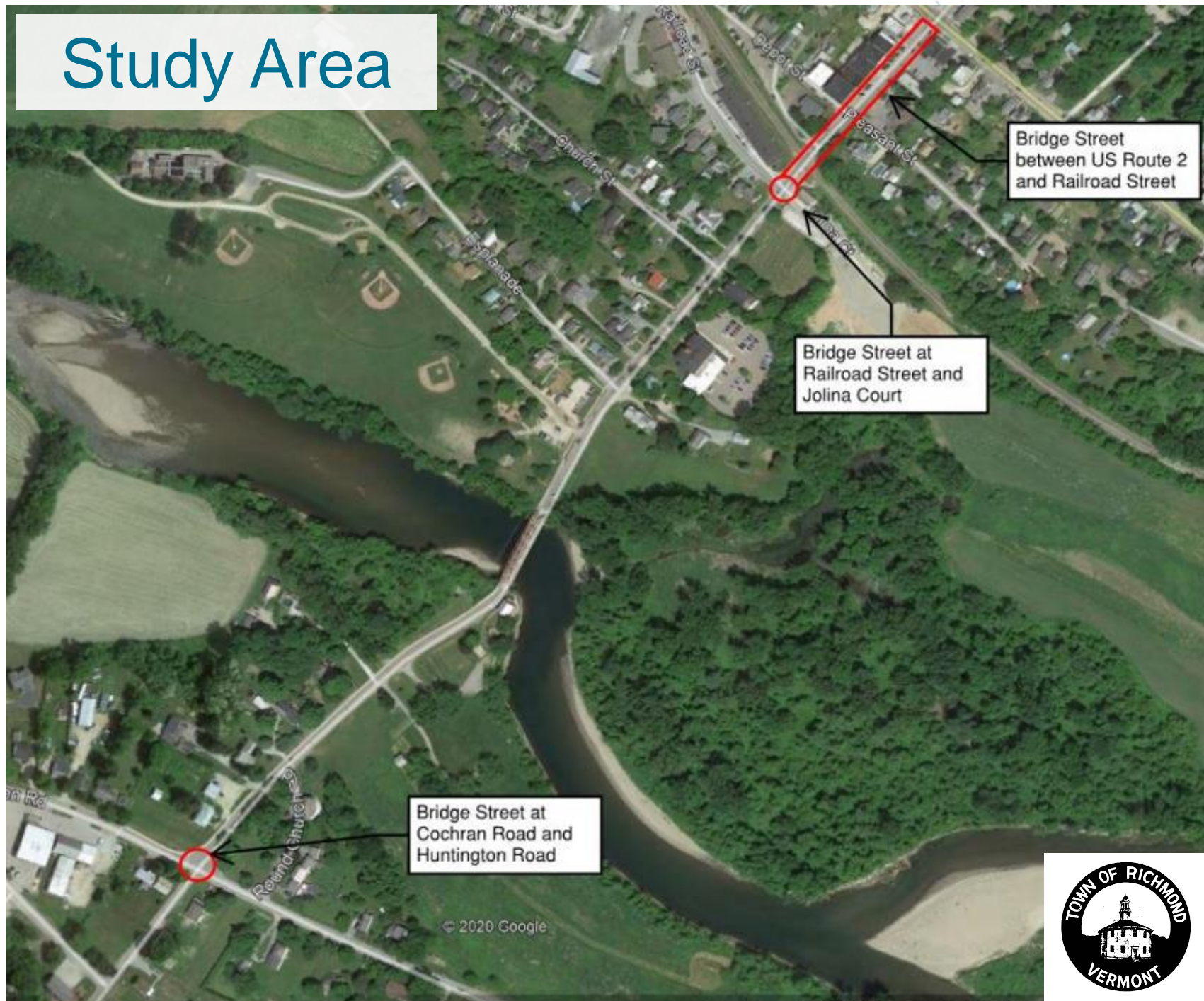


Preferred Alternatives



Next Steps

# Study Area



# Project Purpose and Need Statement

## Excerpt from Project Purpose

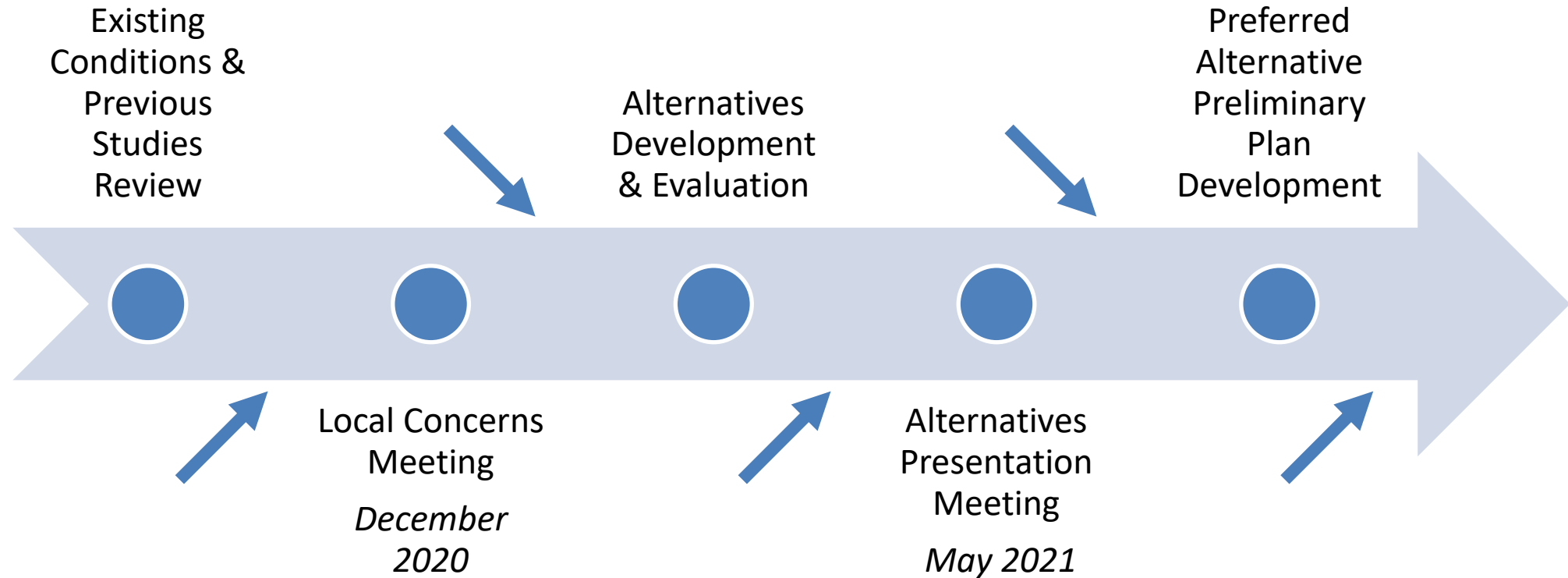
- To **identify** and **prioritize improvements** to create a **multimodal corridor** through the Richmond Village Center that **better accommodates pedestrians and bicyclists where critical infrastructure gaps exist.**

## Project Needs

- **Enhance mobility for pedestrians and bicyclists**
  - Critical gaps in existing infrastructure
- **Improve safety for pedestrians and bicyclists**
  - Lack of delineated space for pedestrians and bicyclists requiring shared space with vehicle traffic
- **Maintain parking in support of businesses**
  - Convenient, on-street parking linked to vitality of businesses



# Project Process



**Transportation Committee & Project Team Input**



# Draft Preliminary Plans of Preferred Alternatives

**INDEX OF SHEETS**

- 1 TITLE SHEET
- 2 CONVENTIONAL SYMBOLLOGY LEGEND SHEET
- 3 PROJECT NOTES
- 4 TYPICAL SECTIONS SHEET
- 5 DETAILS SHEET
- 6-7 QUANTITY SUMMARY SHEETS
- 8-9 ALIGNMENT DATA SHEETS
- 10-13 GENERAL LAYOUT SHEETS
- 14-17 SIGNING AND PAVEMENT MARKING SHEETS
- 18-22 CROSS SECTIONS SHEETS
- 23 TRAFFIC CONTROL NARRATIVE SHEET

**VAOT STANDARDS**

C-2B	PORTLAND CEMENT CONCRETE SIDEWALK DRIVE ENTRANCES WITH SIDEWALK AND GREEN STRIP	10-14-2005
C-3A	SIDEWALK RAMP	04-07-2020
C-3B	SIDEWALK RAMP AND MEDIAN ISLANDS	04-07-2020
C-10	CURBING	02-8-2008
E-121	STANDARD SIGN PLACEMENT - CONVENTIONAL ROAD	08-08-1995
E-191	PAVEMENT MARKING DETAILS	02-01-1999
E-192	PAVEMENT MARKING DETAILS	10-12-2000
E-193	PAVEMENT MARKING DETAILS	08-18-1995
T-1	TRAFFIC CONTROL GENERAL NOTES	04-25-2016
T-2	TRAFFIC SIGN GENERAL NOTES	04-25-2016
T-10	CONVENTIONAL ROADS CONSTRUCTION APPROACH SIGNING	08-06-2012
T-28	CONSTRUCTION SIGN DETAILS	08-06-2012
T-30	CONSTRUCTION SIGN DETAILS	08-06-2012
T-45	SQUARE TUBE SIGN POST AND ANCHOR	01-02-2013
T-56	STANDARD SIGN PLACEMENT	10-26-2015

## TOWN OF RICHMOND

### COUNTY OF CHITTENDEN

## PROPOSED IMPROVEMENTS

### BRIDGE STREET

### IMPROVEMENT PROJECT

**PROJECT LOCATION:** THE PROJECT IS LOCATED ON BRIDGE STREET IN RICHMOND, VT FROM ITS INTERSECTION WITH US ROUTE 2 TO RAILROAD STREET.

**PROJECT DESCRIPTION:** WORK TO BE PERFORMED UNDER THIS PROJECT INCLUDES NEW SIDEWALKS, NEW CROSSWALKS, A NEW RETAINING WALL, NEW PAVEMENT MARKINGS AND SIGNAGE, AND OTHER INCIDENTAL ITEMS.

CONSTRUCTION IS TO BE CARRIED ON IN ACCORDANCE WITH THESE PLANS AND THE STANDARD SPECIFICATIONS FOR CONSTRUCTION DATED 2018, AS APPROVED BY THE FEDERAL HIGHWAY ADMINISTRATION ON APRIL 13, 2018 FOR USE ON THIS PROJECT, INCLUDING ALL SUBSEQUENT REVISIONS AND SUCH REVISED SPECIFICATIONS AND SPECIAL PROVISIONS AS ARE INCORPORATED IN THESE PLANS.

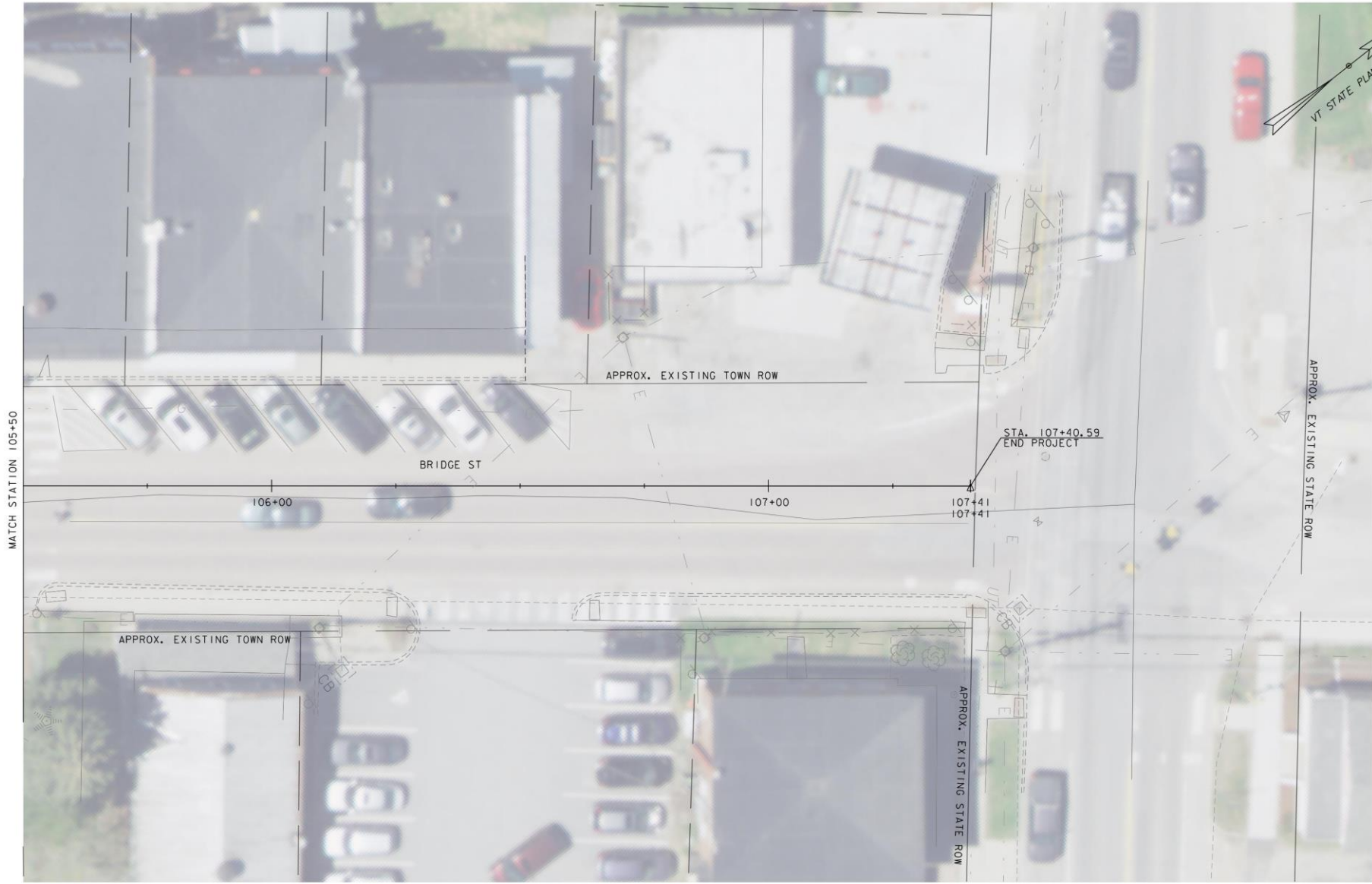
SURVEYED BY : VHB
SURVEYED DATE : 2021
DATUM
VERTICAL: NAVD 1988
HORIZONTAL: NAD 1983

SCALE IN FEET

**PRELIMINARY PLANS**  
**JUNE 2021**

NOTE THAT THIS PROJECT ASSUMES THAT THE STORMWATER INFRASTRUCTURE IMPROVEMENTS AND RELOCATIONS WILL OCCUR IN CONCURRENCE WITH OR BEFORE THIS PROJECT. THE STORMWATER INFRASTRUCTURE IMPROVEMENTS ARE NOT INCLUDED IN THIS PLAN PACKAGE AND ARE PART OF A SEPARATE CONTRACT.

PROJECT MANAGER : J. A. CONLEY
PROJECT NAME : BRIDGE STREET
PROJECT NUMBER : 58538.00
SHEET 1 OF 23 SHEETS



MATCH STATION 105+50

106+00

107+00

107+41  
107+41

BRIDGE ST

APPROX. EXISTING TOWN ROW

STA. 107+40.59  
END PROJECT

APPROX. EXISTING STATE ROW

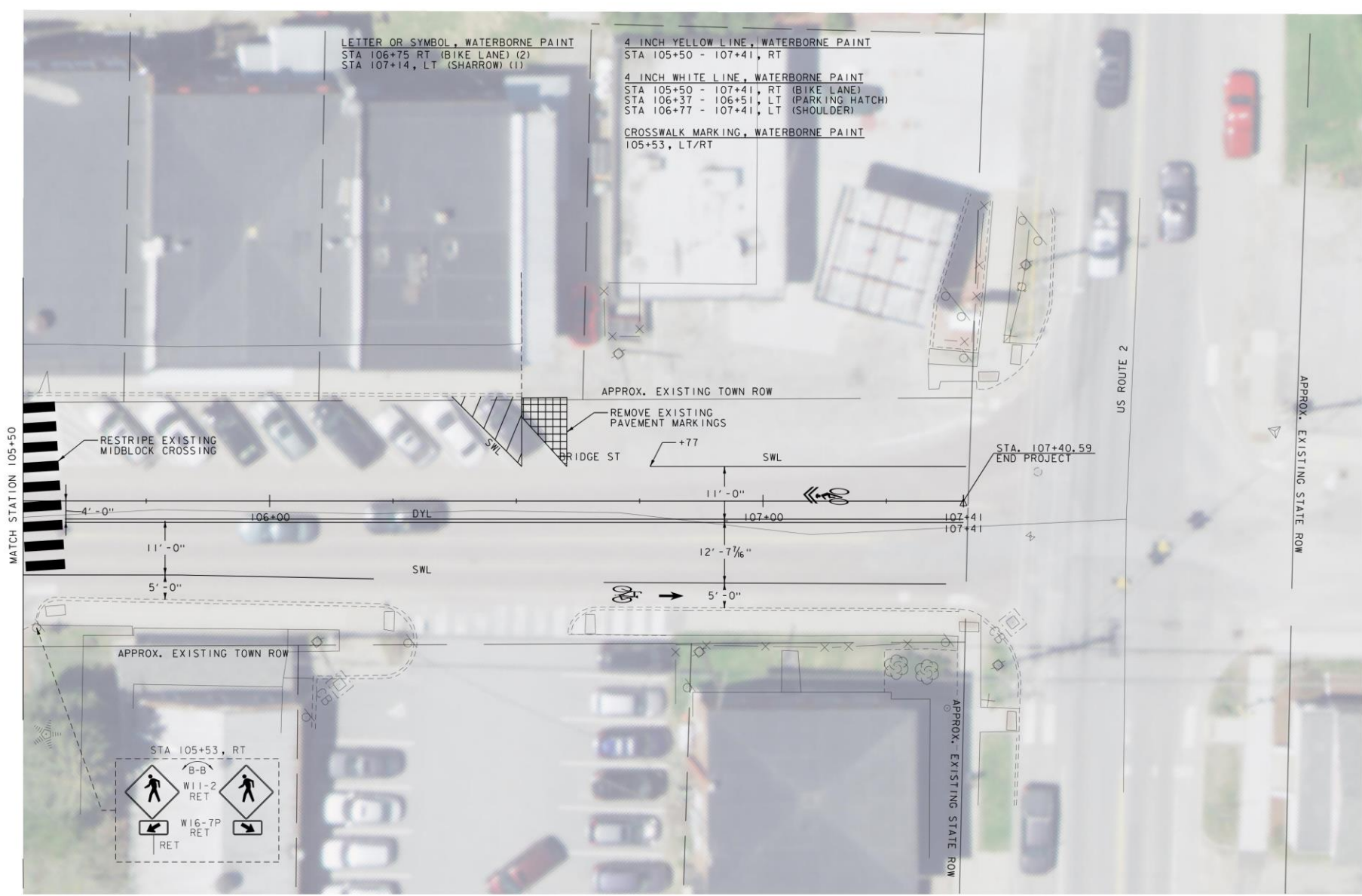
APPROX. EXISTING TOWN ROW

APPROX. EXISTING STATE ROW



PROJECT NAME: BRIDGE STREET  
PROJECT NUMBER: 58538.00

FILE NAME: z58538_bdr_nul.dgn	PLOT DATE: 6/17/2021
PROJECT LEADER: J.A.CONLEY	DRAWN BY: C.K.FORD
DESIGNED BY: C.K.FORD	CHECKED BY: K.M.SENTOFF
GENERAL LAYOUT (SHEET 3 OF 4)	SHEET 12 OF 23



**SIGN LEGEND**  
 R&R = REMOVE AND RESET  
 RET = RETAIN  
 N = NEW

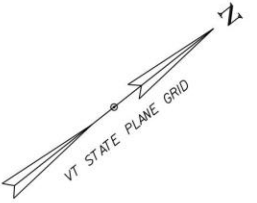
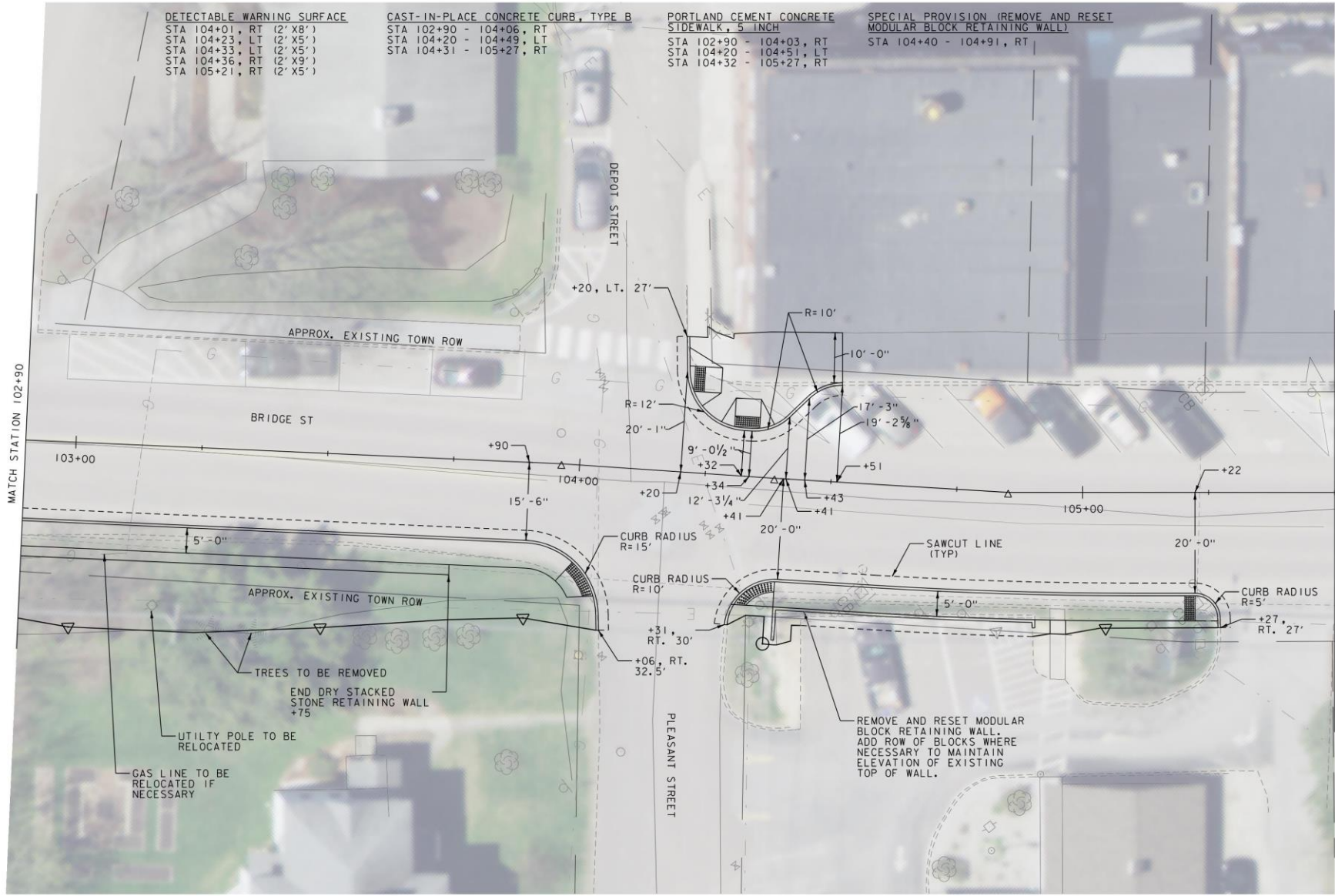
**PAVEMENT MARKING LEGEND**  
 SWL = SINGLE WHITE LINE  
 SDWL = SINGLE DASHED WHITE LINE  
 DYL = DOUBLE YELLOW LINE  
 SDYL = SINGLE DASHED YELLOW LINE



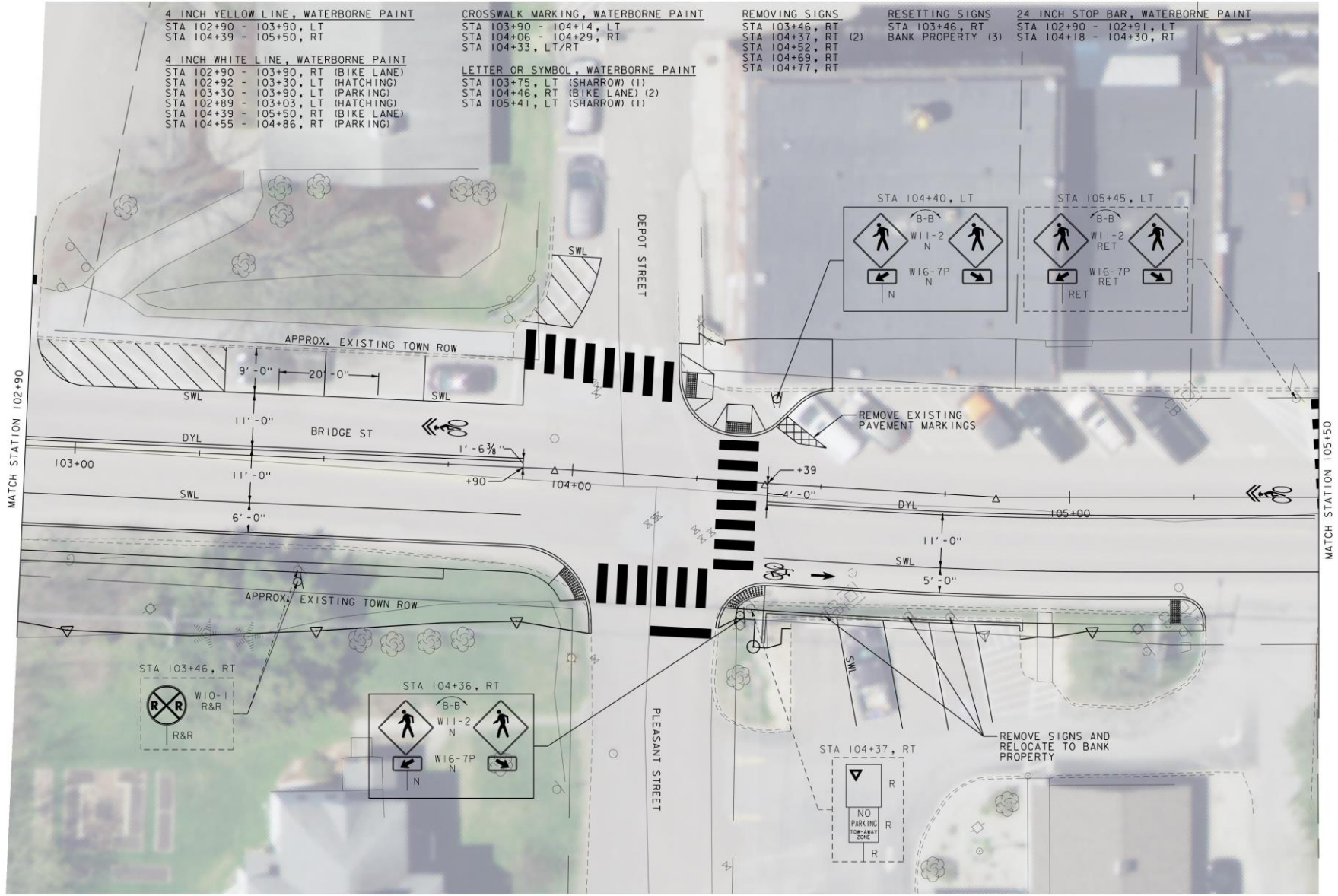
PROJECT NAME:	BRIDGE STREET
PROJECT NUMBER:	58538.00
FILE NAME:	z58538_bdr_spm.dgn
PROJECT LEADER:	J.A.CONLEY
DESIGNED BY:	C.K.FORD
PLOT DATE:	6/17/2021
DRAWN BY:	C.K.FORD
CHECKED BY:	K.M.SENTOFF
SIGNS & PAVEMENT MARKINGS SHEET (3 OF 4) SHEET 16 OF 23	







PROJECT NAME:	BRIDGE STREET	FILE NAME:	z58538_bdr_nul.dgn	PLOT DATE:	6/17/2021
PROJECT NUMBER:	58538.00	PROJECT LEADER:	J.A.CONLEY	DRAWN BY:	C.K.FORD
		DESIGNED BY:	C.K.FORD	CHECKED BY:	K.M.SENTOFF
		GENERAL LAYOUT (SHEET 2 OF 4)		SHEET	11 OF 23



**SIGN LEGEND**  
 R&R = REMOVE AND RESET  
 RET = RETAIN  
 N = NEW

**PAVEMENT MARKING LEGEND**  
 SWL = SINGLE WHITE LINE  
 SDWL = SINGLE DASHED WHITE LINE  
 DYL = DOUBLE YELLOW LINE  
 SDYL = SINGLE DASHED YELLOW LINE



PROJECT NAME: BRIDGE STREET  
 PROJECT NUMBER: 58538.00  
 FILE NAME: z58538\_bdr\_spm.dgn PLOT DATE: 6/17/2021  
 PROJECT LEADER: J.A.CONLEY DRAWN BY: C.K.FORD  
 DESIGNED BY: C.K.FORD CHECKED BY: K.M.SENTOFF  
 SIGNS & PAVEMENT MARKINGS SHEET (2 OF 4) SHEET 15 OF 23



**DETECTABLE WARNING SURFACE**  
 STA 101+02, RT (2' X10')  
 STA 101+03, LT (2' X5')  
 STA 101+15, LT (2' X5')  
 STA 101+44, RT (2' X8')  
 STA 101+69, LT (2' X5')  
 STA 102+12, RT (2' X5')  
 STA 102+20, LT (2' X5')  
 STA 102+49, RT (2' X5')  
 STA 102+56, LT (2' X4')  
 STA 102+62, LT (2' X5')

**PORTLAND CEMENT CONCRETE SIDEWALK, 5 INCH**  
 STA 100+91 - 101+18, LT  
 STA 100+97 - 101+07, RT  
 STA 101+39 - 101+62, RT  
 STA 101+87 - 102+13, RT  
 STA 101+48 - 102+21, LT  
 STA 102+48 - 102+90, RT  
 STA 102+55 - 102+68, LT

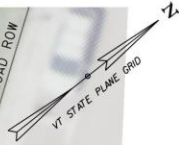
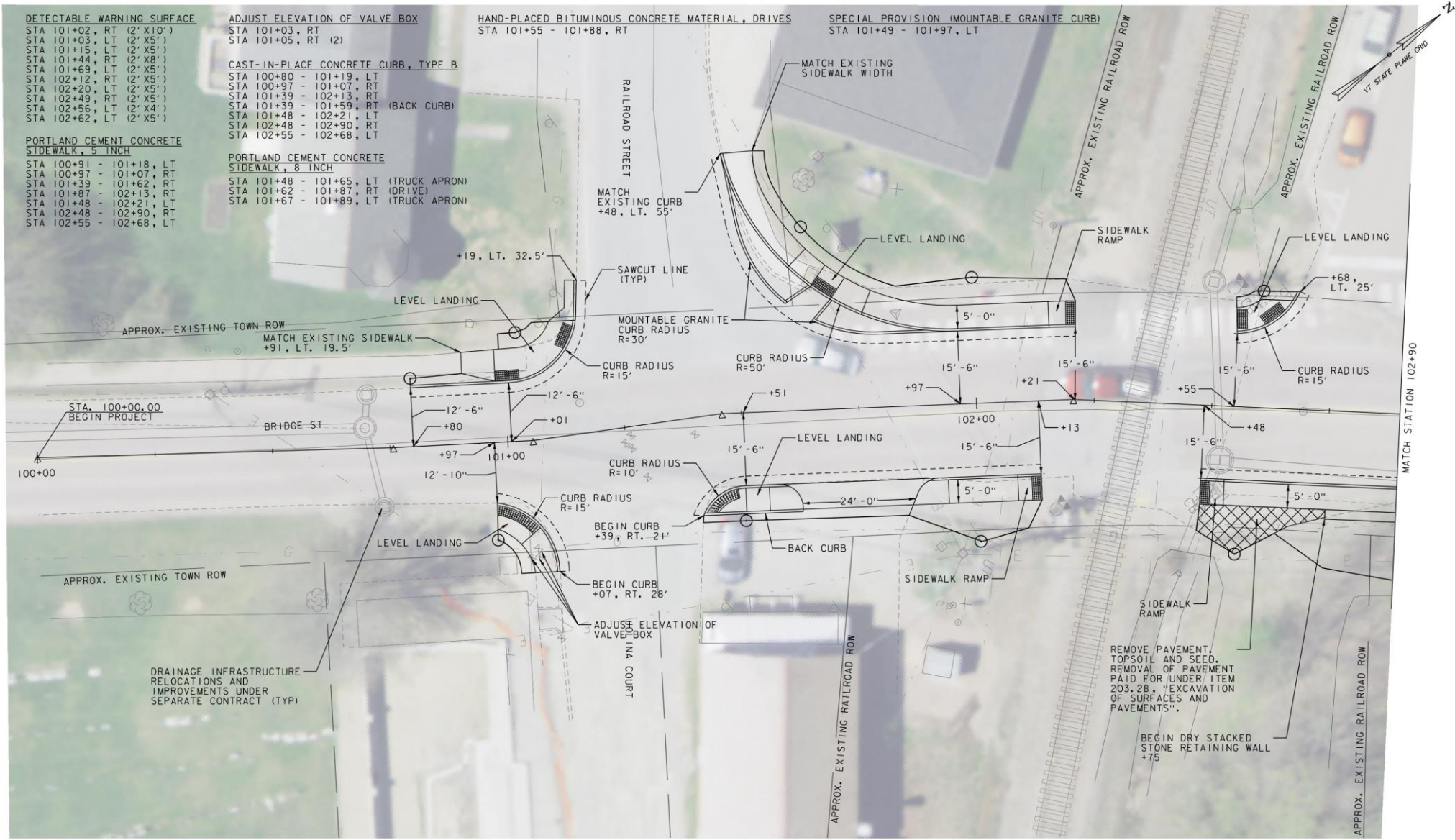
**ADJUST ELEVATION OF VALVE BOX**  
 STA 101+03, RT  
 STA 101+05, RT (2)

**CAST-IN-PLACE CONCRETE CURB, TYPE B**  
 STA 100+80 - 101+19, LT  
 STA 100+97 - 101+07, RT  
 STA 101+39 - 102+13, RT  
 STA 101+39 - 101+59, RT (BACK CURB)  
 STA 101+48 - 102+21, LT  
 STA 102+48 - 102+90, LT  
 STA 102+55 - 102+68, LT

**PORTLAND CEMENT CONCRETE SIDEWALK, 8 INCH**  
 STA 101+48 - 101+65, LT (TRUCK APRON)  
 STA 101+62 - 101+87, RT (DRIVE)  
 STA 101+67 - 101+89, LT (TRUCK APRON)

**HAND-PLACED BITUMINOUS CONCRETE MATERIAL, DRIVES**  
 STA 101+55 - 101+88, RT

**SPECIAL PROVISION (MOUNTABLE GRANITE CURB)**  
 STA 101+49 - 101+97, LT



STA. 100+00.00  
BEGIN PROJECT

BRIDGE ST

APPROX. EXISTING TOWN ROW

DRAINAGE INFRASTRUCTURE  
RELOCATIONS AND  
IMPROVEMENTS UNDER  
SEPARATE CONTRACT (TYP)

ADJUST ELEVATION OF  
VALVE BOX

REMOVE PAVEMENT,  
TOPSOIL AND SEED.  
REMOVAL OF PAVEMENT  
PAID FOR UNDER ITEM  
203.28, "EXCAVATION  
OF SURFACES AND  
PAVEMENTS".

BEGIN DRY STACKED  
STONE RETAINING WALL  
+75



PROJECT NAME:	BRIDGE STREET
PROJECT NUMBER:	58538.00
FILE NAME:	z58538_bdr_nul.dgn
PROJECT LEADER:	J.A.CONLEY
DESIGNED BY:	C.K.FORD
GENERAL LAYOUT (SHEET 1 OF 4)	
PLOT DATE:	6/17/2021
DRAWN BY:	C.K.FORD
CHECKED BY:	K.M.SENTOFF
SHEET	10 OF 23

4 INCH WHITE LINE, WATERBORNE PAINT  
 STA 101+62 - 102+90, RT (BIKE LANE)  
 STA 101+66 - 102+63, LT (SHOULDER)

4 INCH YELLOW LINE, WATERBORNE PAINT  
 STA 100+00 - 100+95, BL  
 STA 101+62 - 102+90, LT

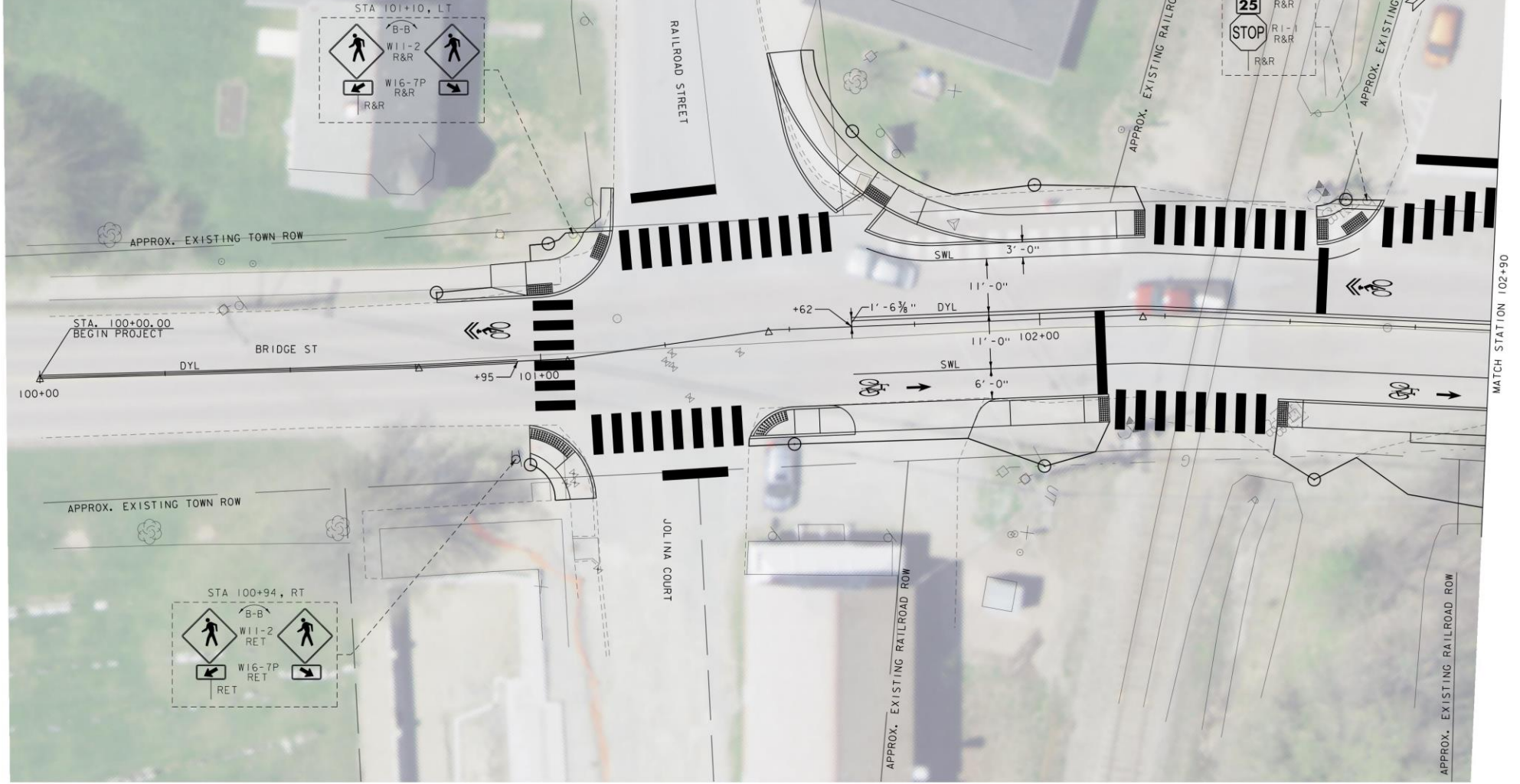
LETTER OR SYMBOL, WATERBORNE PAINT  
 STA 100+90, LT (SHARROW) (1)  
 STA 101+71, RT (BIKE LANE) (2)  
 STA 102+66, LT (SHARROW) (1)  
 STA 102+77, RT (BIKE LANE) (2)

24 INCH STOP BAR, WATERBORNE PAINT  
 STA 101+21 - 101+34, RT  
 STA 101+22 - 101+40, LT  
 STA 102+12, RT  
 STA 102+55, LT  
 STA 102+74 - 102+90, LT

CROSSWALK MARKING, WATERBORNE PAINT  
 STA 101+03, LT/RT  
 STA 101+08 - 101+38, RT  
 STA 101+19 - 101+59, LT  
 STA 102+14 - 102+46, RT  
 STA 102+22 - 102+53, LT  
 STA 102+68 - 102+90, LT

REMOVING SIGNS  
 STA 100+94, RT (2)  
 STA 101+10, LT (2)  
 STA 102+64, LT (2)

RESETTING SIGNS  
 STA 100+94, RT (2)  
 STA 101+10, LT (2)  
 STA 102+64, LT (2)



SIGN LEGEND  
 R&R = REMOVE AND RESET  
 RET = RETAIN  
 N = NEW

PAVEMENT MARKING LEGEND  
 SWL = SINGLE WHITE LINE  
 SDWL = SINGLE DASHED WHITE LINE  
 DYL = DOUBLE YELLOW LINE  
 SDYL = SINGLE DASHED YELLOW LINE



PROJECT NAME: BRIDGE STREET  
 PROJECT NUMBER: 58538.00

FILE NAME: z58538\_bdr\_spm.dgn PLOT DATE: 6/17/2021  
 PROJECT LEADER: J.A.CONLEY DRAWN BY: C.K.FORD  
 DESIGNED BY: C.K.FORD CHECKED BY: K.M.SENTOFF  
 SIGNS & PAVEMENT MARKINGS SHEET (1 OF 4) SHEET 14 OF 23



**DETECTABLE WARNING SURFACE**

- STA 200+45, LT (2' X 5')
- STA 200+47, RT (2' X 5')
- STA 200+49, LT (2' X 5')
- STA 200+64, RT (2' X 5')
- STA 200+78, LT (2' X 5')
- STA 200+99, RT (2' X 5')
- STA 201+21, RT (2' X 5')
- STA 201+21, LT (2' X 5')

**PORTLAND CEMENT CONCRETE SIDEWALK, 5 INCH**

- STA 200+42 - 200+51, LT
- STA 200+44 - 200+65, RT
- STA 200+67 - 200+78, LT
- STA 200+76 - 200+96, LT
- STA 200+97 - 201+25, RT
- STA 201+11 - 201+30, LT

**ADJUST ELEVATION OF VALVE BOX**

- STA 201+49, RT

**CAST-IN-PLACE CONCRETE CURB, TYPE B**

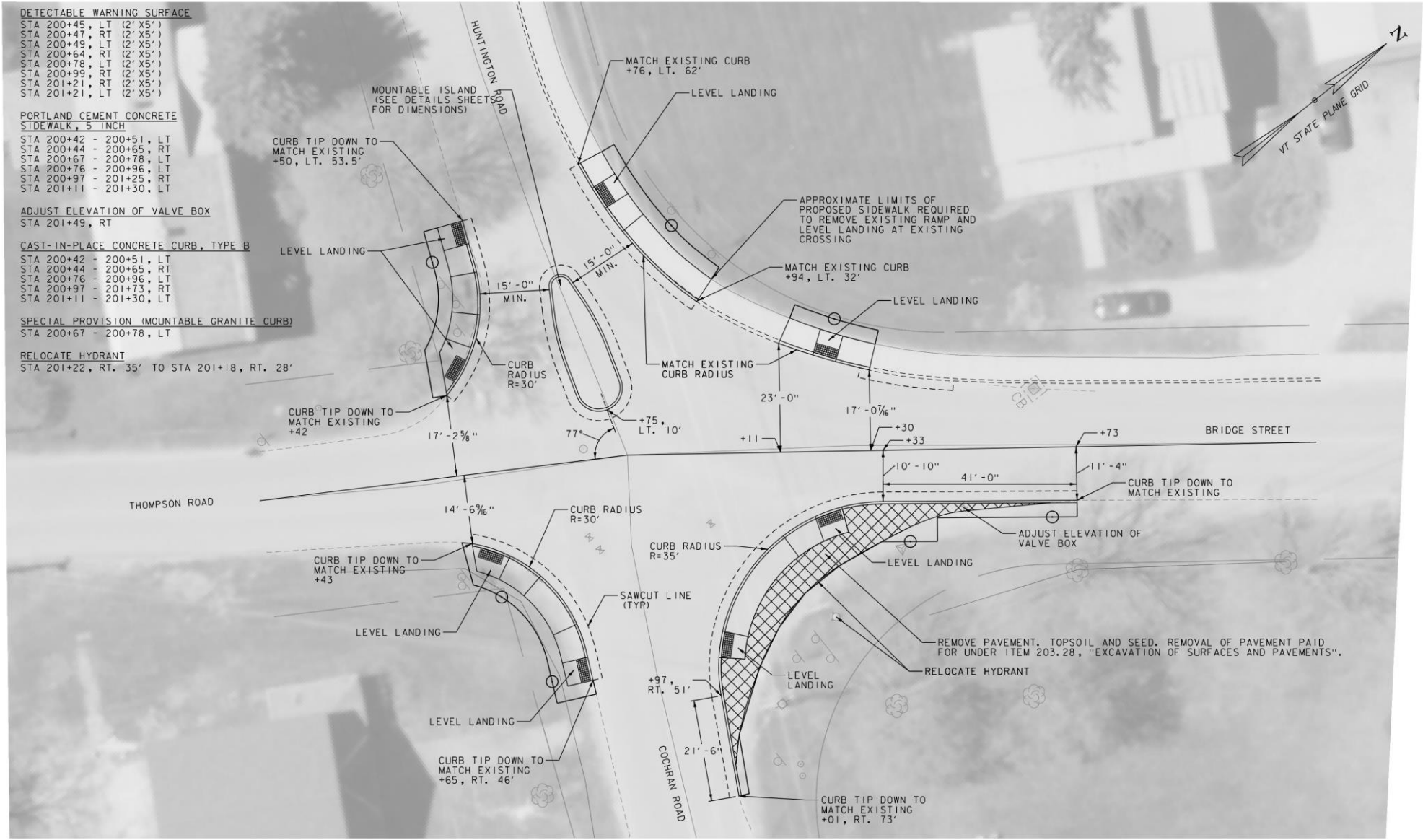
- STA 200+42 - 200+51, LT
- STA 200+44 - 200+65, RT
- STA 200+76 - 200+96, LT
- STA 200+97 - 201+73, RT
- STA 201+11 - 201+30, LT

**SPECIAL PROVISION (MOUNTABLE GRANITE CURB)**

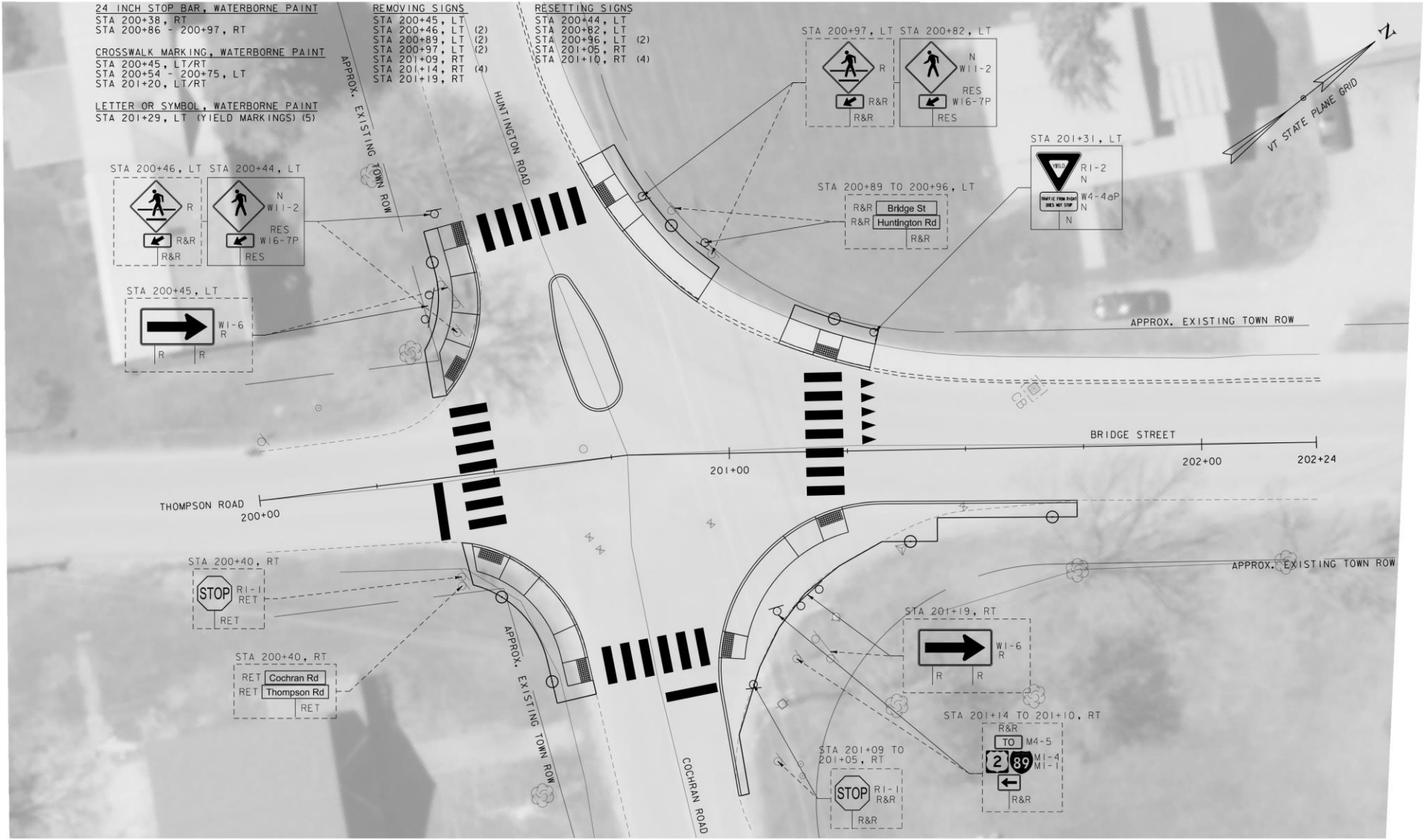
- STA 200+67 - 200+78, LT

**RELOCATE HYDRANT**

- STA 201+22, RT, 35' TO STA 201+18, RT, 28'



PROJECT NAME:	BRIDGE STREET	FILE NAME:	z58538_bdr_nul.dgn	PLOT DATE:	6/17/2021
PROJECT NUMBER:	58538.00	PROJECT LEADER:	J.A.CONLEY	DRAWN BY:	C.K.FORD
		DESIGNED BY:	C.K.FORD	CHECKED BY:	K.M.SENTOFF
		GENERAL LAYOUT (SHEET 4 OF 4)		SHEET	13 OF 23



24 INCH STOP BAR, WATERBORNE PAINT  
 STA 200+38, RT  
 STA 200+86 - 200+97, RT

CROSSWALK MARKING, WATERBORNE PAINT  
 STA 200+45, LT/RT  
 STA 200+54 - 200+75, LT  
 STA 201+20, LT/RT

LETTER OR SYMBOL, WATERBORNE PAINT  
 STA 201+29, LT (YIELD MARKINGS) (5)

REMOVING SIGNS  
 STA 200+45, LT  
 STA 200+46, LT (2)  
 STA 200+89, LT (2)  
 STA 200+97, LT (2)  
 STA 201+09, RT  
 STA 201+14, RT  
 STA 201+19, RT

RESETTNG SIGNS  
 STA 200+44, LT  
 STA 200+82, LT  
 STA 200+96, LT (2)  
 STA 201+05, RT  
 STA 201+10, RT (4)

**SIGN LEGEND**  
 R&R = REMOVE AND RESET  
 RET = RETAIN  
 N = NEW



PROJECT NAME:	BRIDGE STREET
PROJECT NUMBER:	58538.00
FILE NAME:	z58538_bdr_spm.dgn
PROJECT LEADER:	J.A.CONLEY
DESIGNED BY:	C.K.FORD
PLOT DATE:	6/17/2021
DRAWN BY:	C.K.FORD
CHECKED BY:	K.M.SENTOFF
SIGNS & PAVEMENT MARKINGS SHEET 14 OF 45 SHEET 17 OF 23	



# Please Share Your Thoughts with Us



**Jason Charest**  
Senior Transportation Planning Engineer

[jcharest@ccrpcvt.org](mailto:jcharest@ccrpcvt.org)

**Ravi Venkataraman**  
Town Planner

802-434-2430

[rvenkataraman@richmondvt.gov](mailto:rvenkataraman@richmondvt.gov)

