

September 13, 2021

To the Richmond Conservation Commission:

The Richmond Parking Advisory Committee (PAC) is requesting a grant for \$2,500.00 from the Conservation Reserve Fund to pay for a Wetlands Delineation for Overackers Park.

Overocker Park was established in May 2021 to help ease some of Richmond’s recreational parking demands. The town has been informed of this requirement by Tina Heath, District Wetland Ecologist, Chittenden County Department of Environmental Conservation Management Division. This work is required to protect any environmentally sensitive areas and to make best use of this town resource.

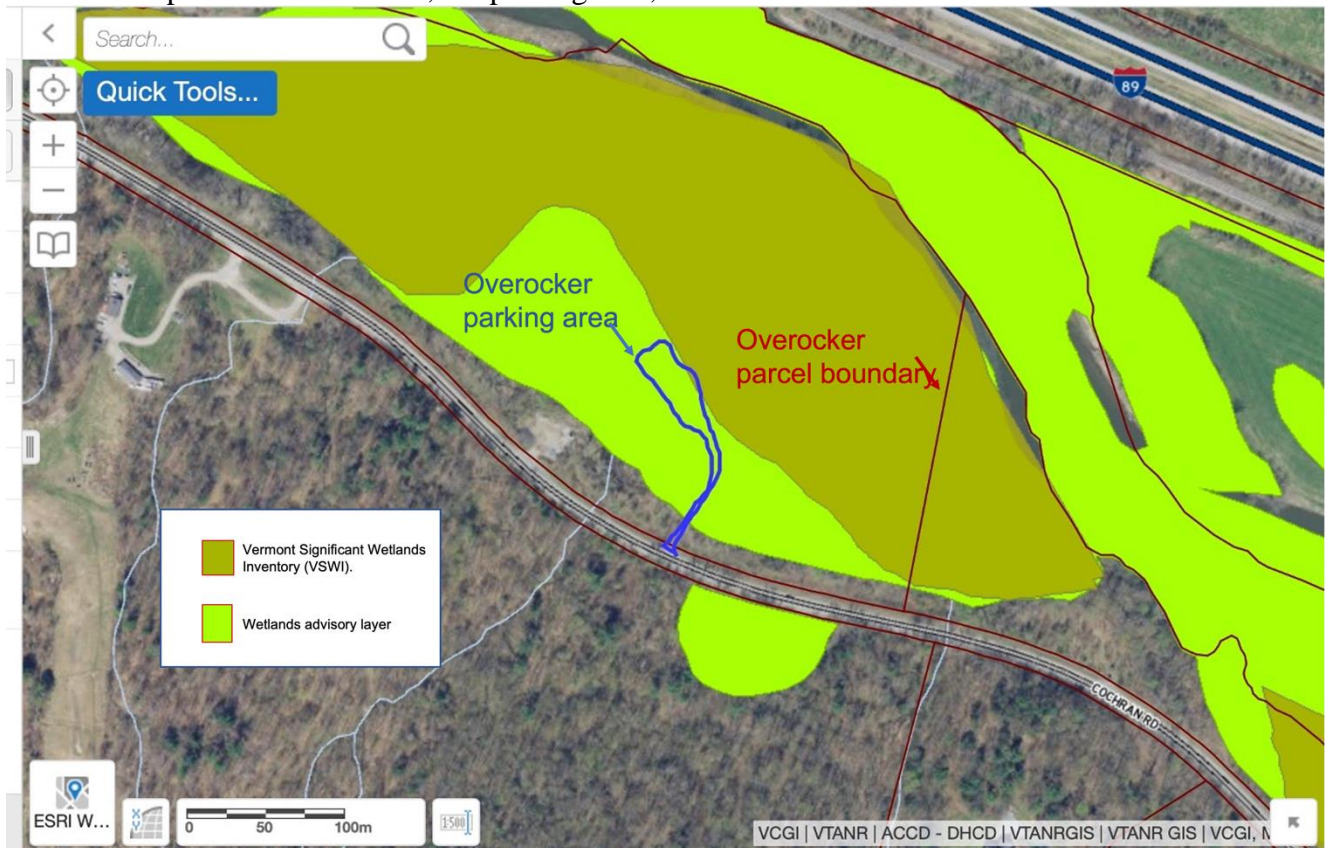
A RiseVT grant is also being sought by the Town of Richmond to cover a portion of this cost.

Project Description & Background

Richmond has become a popular place to recreate. There’s a large biking community that uses various trails throughout Richmond. The summer months bring additional folks to use our waterways or to just sit by the river and cool off. Anyone traveling through Richmond on a hot summer day would quickly see cars parking along the roads by folks trying to reach the rivers and trails.

Overocker Park is located off Cochran Road, adjacent to the river and essentially across from Cochran’s Ski Area. It is located at 1301 Cochran Road, on Richmond Town Land that was previously used by the Richmond Highway Department. There is a previously established trail leading from the parking area to the existing River Shore Trail.

Here is a map of Overocker Park, the parking area, and the wetland areas.



Overrocker Park view from Cochran Road, the parking area, and the trail leading to the Rivershore trails.



Conservation Reserve Fund Criteria

This project meets the General Criteria of the Conservation Reserve Fund Policy in the following ways. The project “contributes toward the acquisition or permanent protection of natural, agricultural or historic resources of importance to Richmond.” (General Criterion 1) The project will also “protect, enhance and provide public access to a natural or recreation area.” (General Criterion 4).

In addition, the project meets the Natural Resources Protection Criteria in the following ways. The project will “preserve river, stream, and wetland quality.” (Natural Resources Protection Criterion 1) The project also “supports low- or no-cost outdoor recreational activities such as fishing, hiking, skiing, hunting, swimming, canoeing, etc. (Natural Resources Protection Criterion 7).

Project Schedule

We hope to begin this assessment as soon as funds are secured. Three 3 bids will be requested from the list of wetland consultants at:

<https://dec.vermont.gov/watershed/wetlands/what/id/wetland-consultant-list>.

The lowest bid will be selected and as soon as possible a wetlands consultant would begin. From their assessment we will know how to best use these 35 acres of Richmond land and how best to position the parking area with respect to the wetlands criteria.

Project Partners

This project is of interest to and supported by several groups. The Selectboard, the Richmond Trails Committee and the Richmond Recreational Committee all support and have interest in the longevity of this parking area.

Long Term Plans

Overocker Park gives Richmond residents and visitors a safe place to park for trail, river, and road access. We imagine this will become an integral part of our town.

Diane Mariano
Parking Advisory Committee
802-233-0416
diane@gmavt.net

Lou Borie
Parking Advisory Committee
802-578-9678
clborie@gmavt.net