

# Town of Richmond

Vermont

## Property Maps

June 1, 2017

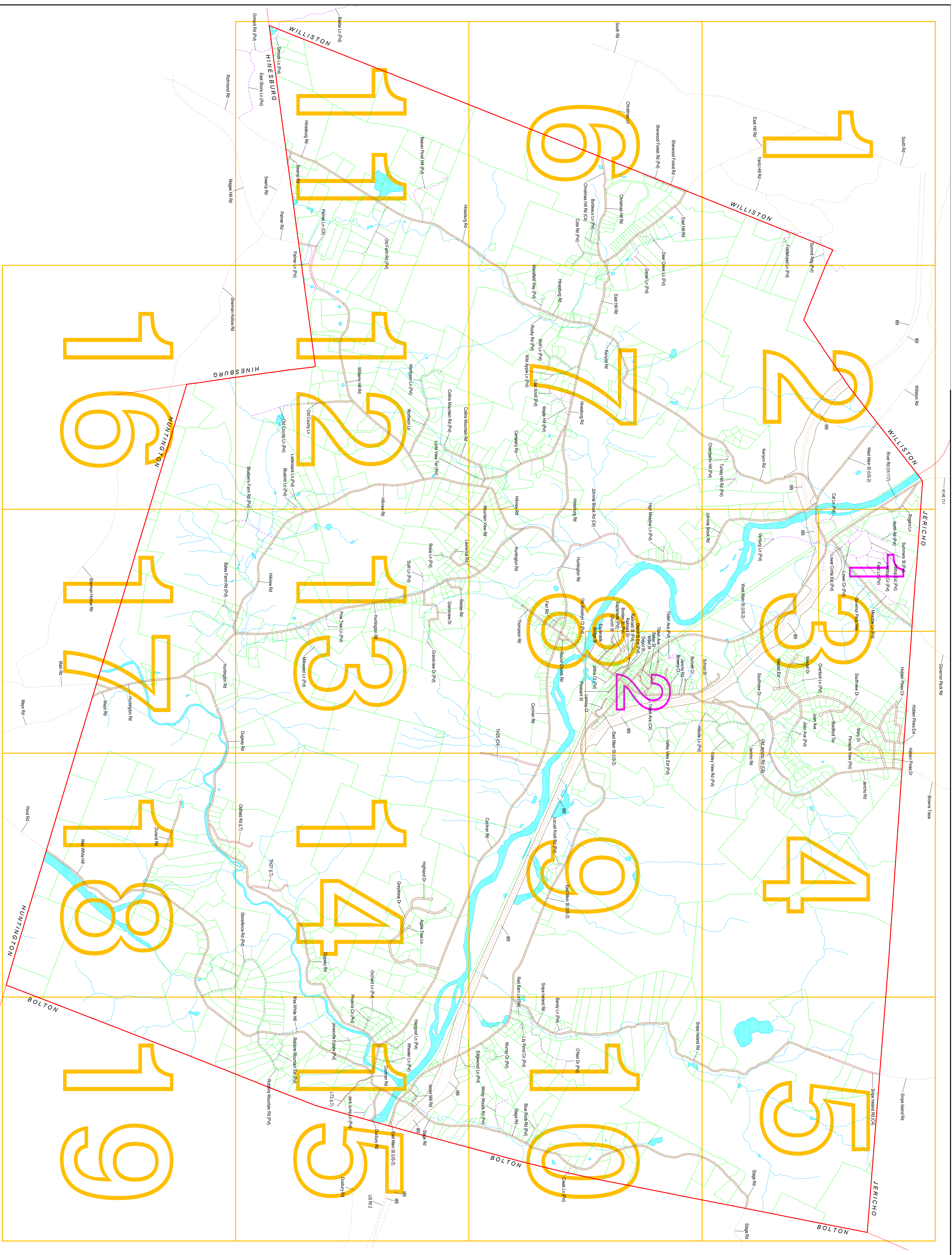
**NEMRC GIS**

PO Box 2020

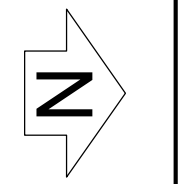
Georgia, VT 05468

1-800-387-1110

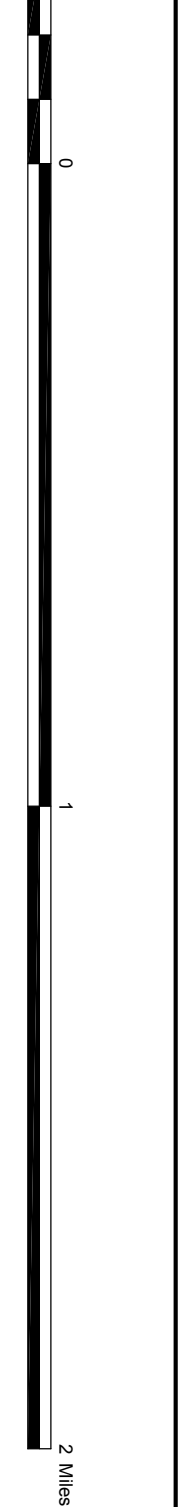




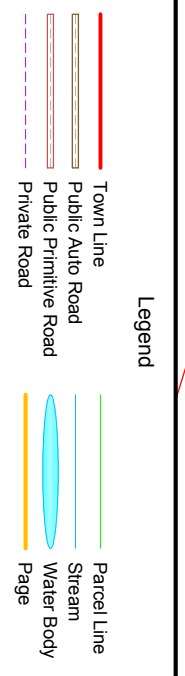
This map is for listing and assessment purposes only. It is not intended to be used for description or conveyance.



1 inch = 481 Meters or 1577 Feet or 0.3 Miles



Pages  
 Each full page contains a grid of 2 x 4 grid cells. The first page contains a grid of 2 x 4 grid cells. The first page contains a grid of 2 x 4 grid cells. The first page contains a grid of 2 x 4 grid cells.















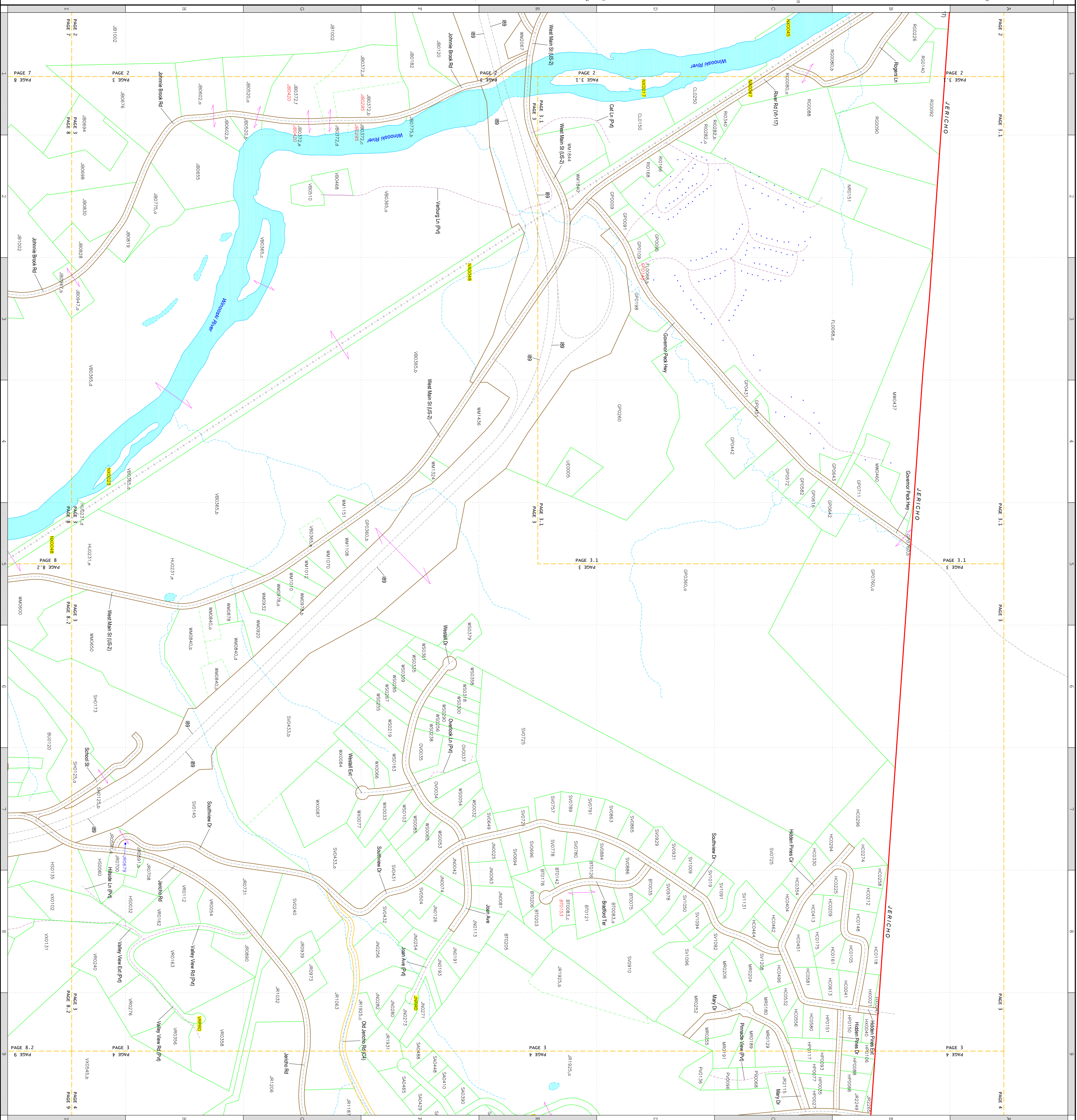






The lot line goes to each side unless noted the owner from the parcel shown to the main title. The acre is calculated from the map polygons. If a parcel contains multiple polygons, the acre value is the total acre, and the number enclosed in parentheses is the count of polygons in the parcel. If a property has no data, the acres are not shown, and the color is white.

Parcel	Owner	Parcel	Owner
80000	CHERRY	80000	CHERRY
80001	CHERRY	80001	CHERRY
80002	CHERRY	80002	CHERRY
80003	CHERRY	80003	CHERRY
80004	CHERRY	80004	CHERRY
80005	CHERRY	80005	CHERRY
80006	CHERRY	80006	CHERRY
80007	CHERRY	80007	CHERRY
80008	CHERRY	80008	CHERRY
80009	CHERRY	80009	CHERRY
80010	CHERRY	80010	CHERRY
80011	CHERRY	80011	CHERRY
80012	CHERRY	80012	CHERRY
80013	CHERRY	80013	CHERRY
80014	CHERRY	80014	CHERRY
80015	CHERRY	80015	CHERRY
80016	CHERRY	80016	CHERRY
80017	CHERRY	80017	CHERRY
80018	CHERRY	80018	CHERRY
80019	CHERRY	80019	CHERRY
80020	CHERRY	80020	CHERRY
80021	CHERRY	80021	CHERRY
80022	CHERRY	80022	CHERRY
80023	CHERRY	80023	CHERRY
80024	CHERRY	80024	CHERRY
80025	CHERRY	80025	CHERRY
80026	CHERRY	80026	CHERRY
80027	CHERRY	80027	CHERRY
80028	CHERRY	80028	CHERRY
80029	CHERRY	80029	CHERRY
80030	CHERRY	80030	CHERRY
80031	CHERRY	80031	CHERRY
80032	CHERRY	80032	CHERRY
80033	CHERRY	80033	CHERRY
80034	CHERRY	80034	CHERRY
80035	CHERRY	80035	CHERRY
80036	CHERRY	80036	CHERRY
80037	CHERRY	80037	CHERRY
80038	CHERRY	80038	CHERRY
80039	CHERRY	80039	CHERRY
80040	CHERRY	80040	CHERRY
80041	CHERRY	80041	CHERRY
80042	CHERRY	80042	CHERRY
80043	CHERRY	80043	CHERRY
80044	CHERRY	80044	CHERRY
80045	CHERRY	80045	CHERRY
80046	CHERRY	80046	CHERRY
80047	CHERRY	80047	CHERRY
80048	CHERRY	80048	CHERRY
80049	CHERRY	80049	CHERRY
80050	CHERRY	80050	CHERRY
80051	CHERRY	80051	CHERRY
80052	CHERRY	80052	CHERRY
80053	CHERRY	80053	CHERRY
80054	CHERRY	80054	CHERRY
80055	CHERRY	80055	CHERRY
80056	CHERRY	80056	CHERRY
80057	CHERRY	80057	CHERRY
80058	CHERRY	80058	CHERRY
80059	CHERRY	80059	CHERRY
80060	CHERRY	80060	CHERRY
80061	CHERRY	80061	CHERRY
80062	CHERRY	80062	CHERRY
80063	CHERRY	80063	CHERRY
80064	CHERRY	80064	CHERRY
80065	CHERRY	80065	CHERRY
80066	CHERRY	80066	CHERRY
80067	CHERRY	80067	CHERRY
80068	CHERRY	80068	CHERRY
80069	CHERRY	80069	CHERRY
80070	CHERRY	80070	CHERRY
80071	CHERRY	80071	CHERRY
80072	CHERRY	80072	CHERRY
80073	CHERRY	80073	CHERRY
80074	CHERRY	80074	CHERRY
80075	CHERRY	80075	CHERRY
80076	CHERRY	80076	CHERRY
80077	CHERRY	80077	CHERRY
80078	CHERRY	80078	CHERRY
80079	CHERRY	80079	CHERRY
80080	CHERRY	80080	CHERRY
80081	CHERRY	80081	CHERRY
80082	CHERRY	80082	CHERRY
80083	CHERRY	80083	CHERRY
80084	CHERRY	80084	CHERRY
80085	CHERRY	80085	CHERRY
80086	CHERRY	80086	CHERRY
80087	CHERRY	80087	CHERRY
80088	CHERRY	80088	CHERRY
80089	CHERRY	80089	CHERRY
80090	CHERRY	80090	CHERRY
80091	CHERRY	80091	CHERRY
80092	CHERRY	80092	CHERRY
80093	CHERRY	80093	CHERRY
80094	CHERRY	80094	CHERRY
80095	CHERRY	80095	CHERRY
80096	CHERRY	80096	CHERRY
80097	CHERRY	80097	CHERRY
80098	CHERRY	80098	CHERRY
80099	CHERRY	80099	CHERRY
80100	CHERRY	80100	CHERRY





The map shows parcels for each which make up the owner from the geographic current to the map date. The owner is calculated from the map polygon. If a parcel contains multiple polygons, the acre value is the total size, and the number enclosed in parentheses is the count of polygons in the parcel. If a property has no data, the acres are not shown, and the count is 0.

Parcel ID	Owner	Parcel ID	Owner
CL0250	CL0250	WM184	WM184
CL0251	CL0251	WM185	WM185
CL0252	CL0252	WM186	WM186
CL0253	CL0253	WM187	WM187
CL0254	CL0254	WM188	WM188
CL0255	CL0255	WM189	WM189
CL0256	CL0256	WM190	WM190
CL0257	CL0257	WM191	WM191
CL0258	CL0258	WM192	WM192
CL0259	CL0259	WM193	WM193
CL0260	CL0260	WM194	WM194
CL0261	CL0261	WM195	WM195
CL0262	CL0262	WM196	WM196
CL0263	CL0263	WM197	WM197
CL0264	CL0264	WM198	WM198
CL0265	CL0265	WM199	WM199
CL0266	CL0266	WM200	WM200
CL0267	CL0267	WM201	WM201
CL0268	CL0268	WM202	WM202
CL0269	CL0269	WM203	WM203
CL0270	CL0270	WM204	WM204
CL0271	CL0271	WM205	WM205
CL0272	CL0272	WM206	WM206
CL0273	CL0273	WM207	WM207
CL0274	CL0274	WM208	WM208
CL0275	CL0275	WM209	WM209
CL0276	CL0276	WM210	WM210
CL0277	CL0277	WM211	WM211
CL0278	CL0278	WM212	WM212
CL0279	CL0279	WM213	WM213
CL0280	CL0280	WM214	WM214
CL0281	CL0281	WM215	WM215
CL0282	CL0282	WM216	WM216
CL0283	CL0283	WM217	WM217
CL0284	CL0284	WM218	WM218
CL0285	CL0285	WM219	WM219
CL0286	CL0286	WM220	WM220
CL0287	CL0287	WM221	WM221
CL0288	CL0288	WM222	WM222
CL0289	CL0289	WM223	WM223
CL0290	CL0290	WM224	WM224
CL0291	CL0291	WM225	WM225
CL0292	CL0292	WM226	WM226
CL0293	CL0293	WM227	WM227
CL0294	CL0294	WM228	WM228
CL0295	CL0295	WM229	WM229
CL0296	CL0296	WM230	WM230
CL0297	CL0297	WM231	WM231
CL0298	CL0298	WM232	WM232
CL0299	CL0299	WM233	WM233
CL0300	CL0300	WM234	WM234
CL0301	CL0301	WM235	WM235
CL0302	CL0302	WM236	WM236
CL0303	CL0303	WM237	WM237
CL0304	CL0304	WM238	WM238
CL0305	CL0305	WM239	WM239
CL0306	CL0306	WM240	WM240
CL0307	CL0307	WM241	WM241
CL0308	CL0308	WM242	WM242
CL0309	CL0309	WM243	WM243
CL0310	CL0310	WM244	WM244
CL0311	CL0311	WM245	WM245
CL0312	CL0312	WM246	WM246
CL0313	CL0313	WM247	WM247
CL0314	CL0314	WM248	WM248
CL0315	CL0315	WM249	WM249
CL0316	CL0316	WM250	WM250
CL0317	CL0317	WM251	WM251
CL0318	CL0318	WM252	WM252
CL0319	CL0319	WM253	WM253
CL0320	CL0320	WM254	WM254
CL0321	CL0321	WM255	WM255
CL0322	CL0322	WM256	WM256
CL0323	CL0323	WM257	WM257
CL0324	CL0324	WM258	WM258
CL0325	CL0325	WM259	WM259
CL0326	CL0326	WM260	WM260
CL0327	CL0327	WM261	WM261
CL0328	CL0328	WM262	WM262
CL0329	CL0329	WM263	WM263
CL0330	CL0330	WM264	WM264
CL0331	CL0331	WM265	WM265
CL0332	CL0332	WM266	WM266
CL0333	CL0333	WM267	WM267
CL0334	CL0334	WM268	WM268
CL0335	CL0335	WM269	WM269
CL0336	CL0336	WM270	WM270
CL0337	CL0337	WM271	WM271
CL0338	CL0338	WM272	WM272
CL0339	CL0339	WM273	WM273
CL0340	CL0340	WM274	WM274
CL0341	CL0341	WM275	WM275
CL0342	CL0342	WM276	WM276
CL0343	CL0343	WM277	WM277
CL0344	CL0344	WM278	WM278
CL0345	CL0345	WM279	WM279
CL0346	CL0346	WM280	WM280
CL0347	CL0347	WM281	WM281
CL0348	CL0348	WM282	WM282
CL0349	CL0349	WM283	WM283
CL0350	CL0350	WM284	WM284
CL0351	CL0351	WM285	WM285
CL0352	CL0352	WM286	WM286
CL0353	CL0353	WM287	WM287
CL0354	CL0354	WM288	WM288
CL0355	CL0355	WM289	WM289
CL0356	CL0356	WM290	WM290
CL0357	CL0357	WM291	WM291
CL0358	CL0358	WM292	WM292
CL0359	CL0359	WM293	WM293
CL0360	CL0360	WM294	WM294
CL0361	CL0361	WM295	WM295
CL0362	CL0362	WM296	WM296
CL0363	CL0363	WM297	WM297
CL0364	CL0364	WM298	WM298
CL0365	CL0365	WM299	WM299
CL0366	CL0366	WM300	WM300
CL0367	CL0367	WM301	WM301
CL0368	CL0368	WM302	WM302
CL0369	CL0369	WM303	WM303
CL0370	CL0370	WM304	WM304
CL0371	CL0371	WM305	WM305
CL0372	CL0372	WM306	WM306
CL0373	CL0373	WM307	WM307
CL0374	CL0374	WM308	WM308
CL0375	CL0375	WM309	WM309
CL0376	CL0376	WM310	WM310
CL0377	CL0377	WM311	WM311
CL0378	CL0378	WM312	WM312
CL0379	CL0379	WM313	WM313
CL0380	CL0380	WM314	WM314
CL0381	CL0381	WM315	WM315
CL0382	CL0382	WM316	WM316
CL0383	CL0383	WM317	WM317
CL0384	CL0384	WM318	WM318
CL0385	CL0385	WM319	WM319
CL0386	CL0386	WM320	WM320
CL0387	CL0387	WM321	WM321
CL0388	CL0388	WM322	WM322
CL0389	CL0389	WM323	WM323
CL0390	CL0390	WM324	WM324
CL0391	CL0391	WM325	WM325
CL0392	CL0392	WM326	WM326
CL0393	CL0393	WM327	WM327
CL0394	CL0394	WM328	WM328
CL0395	CL0395	WM329	WM329
CL0396	CL0396	WM330	WM330
CL0397	CL0397	WM331	WM331
CL0398	CL0398	WM332	WM332
CL0399	CL0399	WM333	WM333
CL0400	CL0400	WM334	WM334
CL0401	CL0401	WM335	WM335
CL0402	CL0402	WM336	WM336
CL0403	CL0403	WM337	WM337
CL0404	CL0404	WM338	WM338
CL0405	CL0405	WM339	WM339
CL0406	CL0406	WM340	WM340
CL0407	CL0407	WM341	WM341
CL0408	CL0408	WM342	WM342
CL0409	CL0409	WM343	WM343
CL0410	CL0410	WM344	WM344
CL0411	CL0411	WM345	WM345
CL0412	CL0412	WM346	WM346
CL0413	CL0413	WM347	WM347
CL0414	CL0414	WM348	WM348
CL0415	CL0415	WM349	WM349
CL0416	CL0416	WM350	WM350
CL0417	CL0417	WM351	WM351
CL0418	CL0418	WM352	WM352
CL0419	CL0419	WM353	WM353
CL0420	CL0420	WM354	WM354
CL0421	CL0421	WM355	WM355
CL0422	CL0422	WM356	WM356
CL0423	CL0423	WM357	WM357
CL0424	CL0424	WM358	WM358
CL0425	CL0425	WM359	WM359
CL0426	CL0426	WM360	WM360
CL0427	CL0427	WM361	WM361
CL0428	CL0428	WM362	WM362
CL0429	CL0429	WM363	WM363
CL0430	CL0430	WM364	WM364
CL0431	CL0431	WM365	WM365
CL0432	CL0432	WM366	WM366
CL0433	CL0433	WM367	WM367
CL0434	CL0434	WM368	WM368
CL0435	CL0435	WM369	WM369
CL0436	CL0436	WM370	WM370
CL0437	CL0437	WM371	WM371
CL0438	CL0438	WM372	WM372
CL0439	CL0439	WM373	WM373
CL0440	CL0440	WM374	WM374
CL0441	CL0441	WM375	WM375
CL0442	CL0442	WM376	WM376
CL0443	CL0443	WM377	WM377
CL0444	CL0444	WM378	WM378
CL0445	CL0445	WM379	WM379
CL0446	CL0446	WM380	WM380
CL0447	CL0447	WM381	WM381
CL0448	CL0448	WM382	WM382
CL0449	CL0449	WM383	WM383
CL0450	CL0450	WM384	WM384
CL0451	CL0451	WM385	WM385
CL0452	CL0452	WM386	WM386
CL0453	CL0453	WM387	WM387
CL0454	CL0454	WM388	WM388
CL0455	CL0455	WM389	WM389
CL0456	CL0456	WM390	WM390
CL0457	CL0457	WM391	WM391
CL0458	CL0458	WM392	WM392
CL0459	CL0459	WM393	WM393
CL0460	CL0460	WM394	WM394
CL0461	CL0461	WM395	WM395
CL0462	CL0462	WM396	WM396
CL0463	CL0463	WM397	WM397
CL0464	CL0464	WM398	WM398
CL0465	CL0465	WM399	WM399
CL0466	CL0466	WM400	WM400
CL0467	CL0467	WM401	WM401
CL0468	CL0468	WM402	WM402
CL0469	CL0469	WM403	WM403
CL0470	CL0470	WM404	WM404
CL0471	CL0471	WM405	WM405
CL0472	CL0472	WM406	WM406
CL0473	CL0473	WM407	WM407
CL0474	CL0474	WM408	WM408
CL0475	CL0475	WM409	WM409
CL0476	CL0476	WM410	WM410
CL0477	CL0477	WM411	WM411
CL0478	CL0478	WM412	WM412
CL0479	CL0479	WM413	WM413
CL0480	CL0480	WM414	WM414
CL0481	CL0481	WM415	WM415
CL0482	CL0482	WM416	WM416
CL0483	CL0483	WM417	WM417
CL0484	CL0484	WM418	WM418
CL0485	CL0485	WM419	WM419
CL0486	CL0486	WM420	WM420
CL0487	CL0487	WM421	WM421
CL0488	CL0488	WM422	WM422
CL0489	CL0489	WM423	WM423
CL0490	CL0490	WM424	WM424
CL0491	CL0491	WM425	WM425
CL0492	CL0492	WM426	WM426
CL0493	CL0493	WM427	WM427
CL0494	CL0494	WM428	WM428
CL0495	CL0495	WM429	WM429
CL0496	CL0496	WM430	WM430
CL0497	CL0497	WM431	WM431
CL0498	CL0498	WM432	WM432
CL0499	CL0499	WM433	WM433
CL0500	CL0500	WM434	WM434
CL0501	CL0501	WM435	WM435
CL0502	CL0502	WM436	WM436
CL0503	CL0503	WM437	WM437
CL0504	CL0504	WM438	WM438
CL0505	CL0505	WM439	WM439
CL0506	CL0506	WM440	WM440
CL0507	CL0507	WM441	WM441
CL0508	CL0508	WM442	WM442
CL0509	CL0509	WM443	WM443
CL0510	CL0510	WM444	WM444
CL0511	CL0511	WM445	WM445
CL0512	CL0512	WM446	WM446
CL0513	CL0513	WM447	WM447
CL0514	CL0514	WM448	WM448
CL0515	CL0515	WM449	WM449
CL0516	CL0516	WM450	WM450
CL0517	CL0517	WM451	WM451
CL0518	CL0518	WM452	WM452
CL0519	CL0519	WM453	WM453
CL0520	CL0520	WM454	WM454
CL0521	CL0521	WM455	WM455
CL0522	CL0522	WM456	WM456
CL0523	CL0523	WM457	WM457
CL0524	CL0524	WM458	WM458
CL0525	CL0525	WM459	WM459
CL0526	CL0526	WM460	WM460
CL0527	CL0527	WM461	WM461
CL0528	CL0528	WM462	WM462
CL0529	CL0529	WM463	WM463
CL0530	CL0530	WM464	WM464
CL0531	CL0531	WM465	WM465
CL0532	CL0532	WM466	WM466
CL0533	CL0533</		

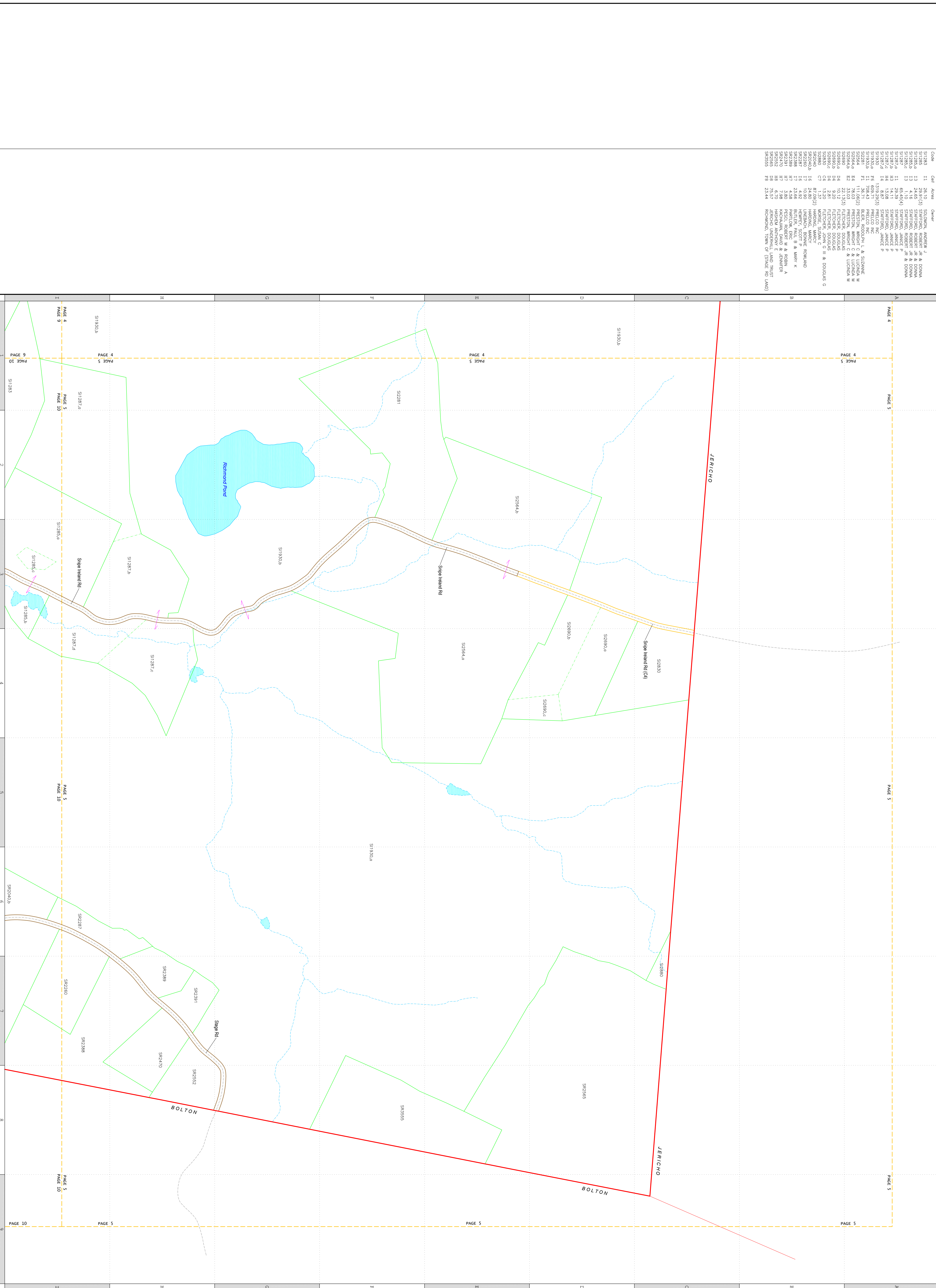






The list below gives the owner's name, the parcel's area, and the number enclosed in parentheses is the count of polygons in the parcel. If a parcel contains multiple polygons, the area value is the total area, and the number enclosed in parentheses is the count of polygons in the parcel. If a property has no land, the area is not shown, and the count is 0.

Code	City	Owner	Area
SI1928	Jericho	STAFFORD, ANDREW J.	11
SI1929	Jericho	STAFFORD, ANDREW J.	22,913.3
SI1930	Jericho	STAFFORD, ANDREW J.	13
SI1931	Jericho	STAFFORD, ANDREW J.	24.65
SI1932	Jericho	STAFFORD, ANDREW J.	13
SI1933	Jericho	STAFFORD, ANDREW J.	13
SI1934	Jericho	STAFFORD, ANDREW J.	11
SI1935	Jericho	STAFFORD, ANDREW J.	11
SI1936	Jericho	STAFFORD, ANDREW J.	11
SI1937	Jericho	STAFFORD, ANDREW J.	11
SI1938	Jericho	STAFFORD, ANDREW J.	11
SI1939	Jericho	STAFFORD, ANDREW J.	11
SI1940	Jericho	STAFFORD, ANDREW J.	11
SI1941	Jericho	STAFFORD, ANDREW J.	11
SI1942	Jericho	STAFFORD, ANDREW J.	11
SI1943	Jericho	STAFFORD, ANDREW J.	11
SI1944	Jericho	STAFFORD, ANDREW J.	11
SI1945	Jericho	STAFFORD, ANDREW J.	11
SI1946	Jericho	STAFFORD, ANDREW J.	11
SI1947	Jericho	STAFFORD, ANDREW J.	11
SI1948	Jericho	STAFFORD, ANDREW J.	11
SI1949	Jericho	STAFFORD, ANDREW J.	11
SI1950	Jericho	STAFFORD, ANDREW J.	11
SI1951	Jericho	STAFFORD, ANDREW J.	11
SI1952	Jericho	STAFFORD, ANDREW J.	11
SI1953	Jericho	STAFFORD, ANDREW J.	11
SI1954	Jericho	STAFFORD, ANDREW J.	11
SI1955	Jericho	STAFFORD, ANDREW J.	11
SI1956	Jericho	STAFFORD, ANDREW J.	11
SI1957	Jericho	STAFFORD, ANDREW J.	11
SI1958	Jericho	STAFFORD, ANDREW J.	11
SI1959	Jericho	STAFFORD, ANDREW J.	11
SI1960	Jericho	STAFFORD, ANDREW J.	11
SI1961	Jericho	STAFFORD, ANDREW J.	11
SI1962	Jericho	STAFFORD, ANDREW J.	11
SI1963	Jericho	STAFFORD, ANDREW J.	11
SI1964	Jericho	STAFFORD, ANDREW J.	11
SI1965	Jericho	STAFFORD, ANDREW J.	11
SI1966	Jericho	STAFFORD, ANDREW J.	11
SI1967	Jericho	STAFFORD, ANDREW J.	11
SI1968	Jericho	STAFFORD, ANDREW J.	11
SI1969	Jericho	STAFFORD, ANDREW J.	11
SI1970	Jericho	STAFFORD, ANDREW J.	11
SI1971	Jericho	STAFFORD, ANDREW J.	11
SI1972	Jericho	STAFFORD, ANDREW J.	11
SI1973	Jericho	STAFFORD, ANDREW J.	11
SI1974	Jericho	STAFFORD, ANDREW J.	11
SI1975	Jericho	STAFFORD, ANDREW J.	11
SI1976	Jericho	STAFFORD, ANDREW J.	11
SI1977	Jericho	STAFFORD, ANDREW J.	11
SI1978	Jericho	STAFFORD, ANDREW J.	11
SI1979	Jericho	STAFFORD, ANDREW J.	11
SI1980	Jericho	STAFFORD, ANDREW J.	11
SI1981	Jericho	STAFFORD, ANDREW J.	11
SI1982	Jericho	STAFFORD, ANDREW J.	11
SI1983	Jericho	STAFFORD, ANDREW J.	11
SI1984	Jericho	STAFFORD, ANDREW J.	11
SI1985	Jericho	STAFFORD, ANDREW J.	11
SI1986	Jericho	STAFFORD, ANDREW J.	11
SI1987	Jericho	STAFFORD, ANDREW J.	11
SI1988	Jericho	STAFFORD, ANDREW J.	11
SI1989	Jericho	STAFFORD, ANDREW J.	11
SI1990	Jericho	STAFFORD, ANDREW J.	11
SI1991	Jericho	STAFFORD, ANDREW J.	11
SI1992	Jericho	STAFFORD, ANDREW J.	11
SI1993	Jericho	STAFFORD, ANDREW J.	11
SI1994	Jericho	STAFFORD, ANDREW J.	11
SI1995	Jericho	STAFFORD, ANDREW J.	11
SI1996	Jericho	STAFFORD, ANDREW J.	11
SI1997	Jericho	STAFFORD, ANDREW J.	11
SI1998	Jericho	STAFFORD, ANDREW J.	11
SI1999	Jericho	STAFFORD, ANDREW J.	11
SI2000	Jericho	STAFFORD, ANDREW J.	11



This map is for zoning purposes only. It is not to be used for description or conveyance.

**Non-paved Lines**

- Public Road Centerline
- Stream Centerline
- Raised Centerline

**Subserved Lines**

- Normal Subserved Line
- Stream Centerline
- Water Body Edge

**Paraded Lines**

- Town Line
- Public Auto Road Edge
- Private Board Centerline

**Property Codes**

- SI1928-1999
- SI2000-2009

Scale: 1 inch = 460 feet

Town of Richmond  
June 1, 2017  
Page 5

NEARC



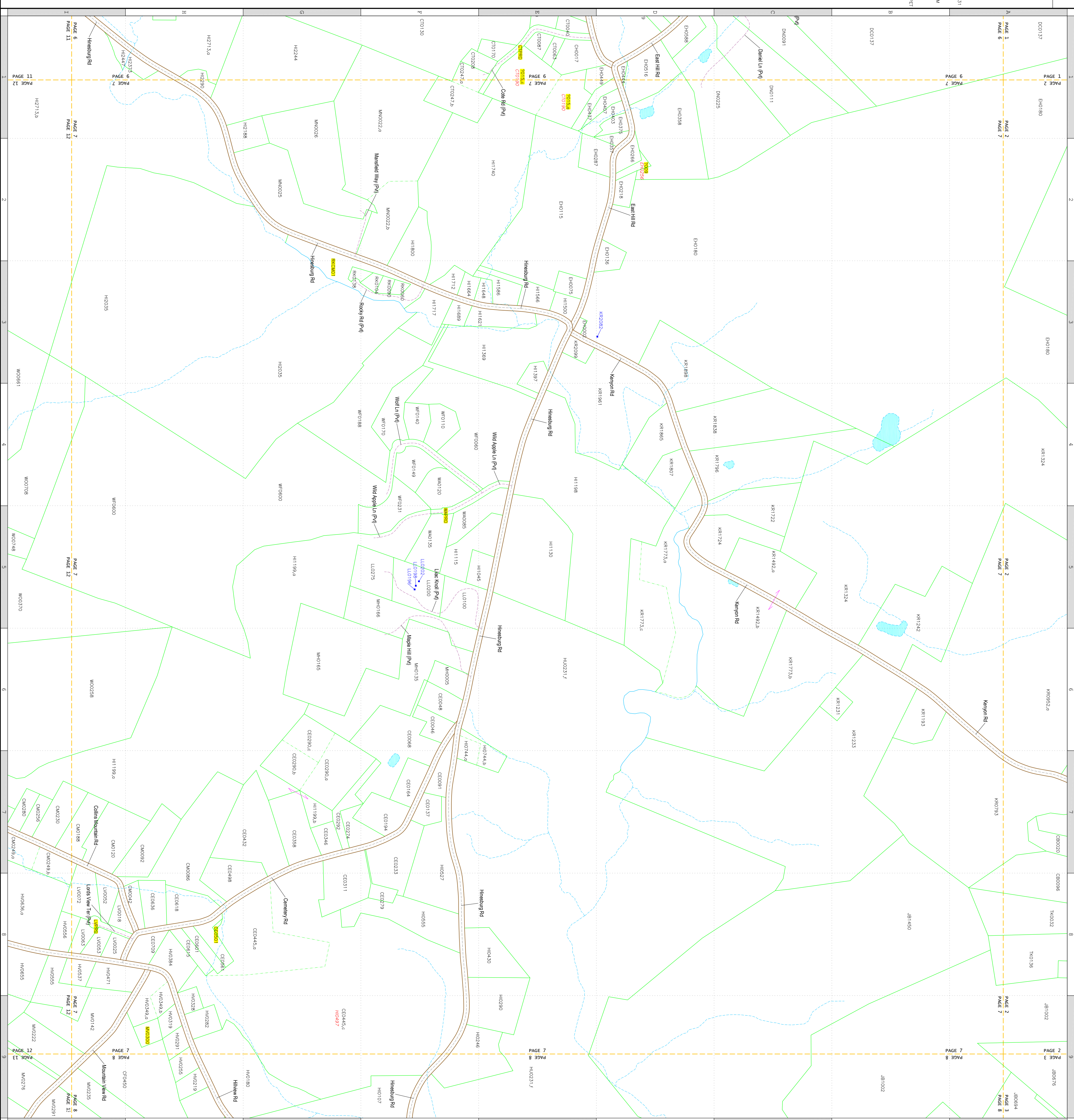




The list below gives to each within make code the owner from the generic current to the most date. The acre is calculated from the map polygons. If a parcel contains multiple polygons, the acre value is the total acre, and the number enclosed in parentheses is the count of polygons in the parcel. If a parcel has no data, the acres are not shown, and the code is blank.

Code	Owner	Code	Owner
7015	7015	W00291	W00291
7016	7016	W00292	W00292
7017	7017	W00293	W00293
7018	7018	W00294	W00294
7019	7019	W00295	W00295
7020	7020	W00296	W00296
7021	7021	W00297	W00297
7022	7022	W00298	W00298
7023	7023	W00299	W00299
7024	7024	W00300	W00300
7025	7025	W00301	W00301
7026	7026	W00302	W00302
7027	7027	W00303	W00303
7028	7028	W00304	W00304
7029	7029	W00305	W00305
7030	7030	W00306	W00306
7031	7031	W00307	W00307
7032	7032	W00308	W00308
7033	7033	W00309	W00309
7034	7034	W00310	W00310
7035	7035	W00311	W00311
7036	7036	W00312	W00312
7037	7037	W00313	W00313
7038	7038	W00314	W00314
7039	7039	W00315	W00315
7040	7040	W00316	W00316
7041	7041	W00317	W00317
7042	7042	W00318	W00318
7043	7043	W00319	W00319
7044	7044	W00320	W00320
7045	7045	W00321	W00321
7046	7046	W00322	W00322
7047	7047	W00323	W00323
7048	7048	W00324	W00324
7049	7049	W00325	W00325
7050	7050	W00326	W00326
7051	7051	W00327	W00327
7052	7052	W00328	W00328
7053	7053	W00329	W00329
7054	7054	W00330	W00330
7055	7055	W00331	W00331
7056	7056	W00332	W00332
7057	7057	W00333	W00333
7058	7058	W00334	W00334
7059	7059	W00335	W00335
7060	7060	W00336	W00336
7061	7061	W00337	W00337
7062	7062	W00338	W00338
7063	7063	W00339	W00339
7064	7064	W00340	W00340
7065	7065	W00341	W00341
7066	7066	W00342	W00342
7067	7067	W00343	W00343
7068	7068	W00344	W00344
7069	7069	W00345	W00345
7070	7070	W00346	W00346
7071	7071	W00347	W00347
7072	7072	W00348	W00348
7073	7073	W00349	W00349
7074	7074	W00350	W00350
7075	7075	W00351	W00351
7076	7076	W00352	W00352
7077	7077	W00353	W00353
7078	7078	W00354	W00354
7079	7079	W00355	W00355
7080	7080	W00356	W00356
7081	7081	W00357	W00357
7082	7082	W00358	W00358
7083	7083	W00359	W00359
7084	7084	W00360	W00360
7085	7085	W00361	W00361
7086	7086	W00362	W00362
7087	7087	W00363	W00363
7088	7088	W00364	W00364
7089	7089	W00365	W00365
7090	7090	W00366	W00366
7091	7091	W00367	W00367
7092	7092	W00368	W00368
7093	7093	W00369	W00369
7094	7094	W00370	W00370
7095	7095	W00371	W00371
7096	7096	W00372	W00372
7097	7097	W00373	W00373
7098	7098	W00374	W00374
7099	7099	W00375	W00375
7100	7100	W00376	W00376

Code	Owner	Code	Owner
W00377	W00377	W00377	W00377
W00378	W00378	W00378	W00378
W00379	W00379	W00379	W00379
W00380	W00380	W00380	W00380
W00381	W00381	W00381	W00381
W00382	W00382	W00382	W00382
W00383	W00383	W00383	W00383
W00384	W00384	W00384	W00384
W00385	W00385	W00385	W00385
W00386	W00386	W00386	W00386
W00387	W00387	W00387	W00387
W00388	W00388	W00388	W00388
W00389	W00389	W00389	W00389
W00390	W00390	W00390	W00390
W00391	W00391	W00391	W00391
W00392	W00392	W00392	W00392
W00393	W00393	W00393	W00393
W00394	W00394	W00394	W00394
W00395	W00395	W00395	W00395
W00396	W00396	W00396	W00396
W00397	W00397	W00397	W00397
W00398	W00398	W00398	W00398
W00399	W00399	W00399	W00399
W00400	W00400	W00400	W00400
W00401	W00401	W00401	W00401
W00402	W00402	W00402	W00402
W00403	W00403	W00403	W00403
W00404	W00404	W00404	W00404
W00405	W00405	W00405	W00405
W00406	W00406	W00406	W00406
W00407	W00407	W00407	W00407
W00408	W00408	W00408	W00408
W00409	W00409	W00409	W00409
W00410	W00410	W00410	W00410
W00411	W00411	W00411	W00411
W00412	W00412	W00412	W00412
W00413	W00413	W00413	W00413
W00414	W00414	W00414	W00414
W00415	W00415	W00415	W00415
W00416	W00416	W00416	W00416
W00417	W00417	W00417	W00417
W00418	W00418	W00418	W00418
W00419	W00419	W00419	W00419
W00420	W00420	W00420	W00420
W00421	W00421	W00421	W00421
W00422	W00422	W00422	W00422
W00423	W00423	W00423	W00423
W00424	W00424	W00424	W00424
W00425	W00425	W00425	W00425
W00426	W00426	W00426	W00426
W00427	W00427	W00427	W00427
W00428	W00428	W00428	W00428
W00429	W00429	W00429	W00429
W00430	W00430	W00430	W00430
W00431	W00431	W00431	W00431
W00432	W00432	W00432	W00432
W00433	W00433	W00433	W00433
W00434	W00434	W00434	W00434
W00435	W00435	W00435	W00435
W00436	W00436	W00436	W00436
W00437	W00437	W00437	W00437
W00438	W00438	W00438	W00438
W00439	W00439	W00439	W00439
W00440	W00440	W00440	W00440
W00441	W00441	W00441	W00441
W00442	W00442	W00442	W00442
W00443	W00443	W00443	W00443
W00444	W00444	W00444	W00444
W00445	W00445	W00445	W00445
W00446	W00446	W00446	W00446
W00447	W00447	W00447	W00447
W00448	W00448	W00448	W00448
W00449	W00449	W00449	W00449
W00450	W00450	W00450	W00450
W00451	W00451	W00451	W00451
W00452	W00452	W00452	W00452
W00453	W00453	W00453	W00453
W00454	W00454	W00454	W00454
W00455	W00455	W00455	W00455
W00456	W00456	W00456	W00456
W00457	W00457	W00457	W00457
W00458	W00458	W00458	W00458
W00459	W00459	W00459	W00459
W00460	W00460	W00460	W00460
W00461	W00461	W00461	W00461
W00462	W00462	W00462	W00462
W00463	W00463	W00463	W00463
W00464	W00464	W00464	W00464
W00465	W00465	W00465	W00465
W00466	W00466	W00466	W00466
W00467	W00467	W00467	W00467
W00468	W00468	W00468	W00468
W00469	W00469	W00469	W00469
W00470	W00470	W00470	W00470
W00471	W00471	W00471	W00471
W00472	W00472	W00472	W00472
W00473	W00473	W00473	W00473
W00474	W00474	W00474	W00474
W00475	W00475	W00475	W00475
W00476	W00476	W00476	W00476
W00477	W00477	W00477	W00477
W00478	W00478	W00478	W00478
W00479	W00479	W00479	W00479
W00480	W00480	W00480	W00480
W00481	W00481	W00481	W00481
W00482	W00482	W00482	W00482
W00483	W00483	W00483	W00483
W00484	W00484	W00484	W00484
W00485	W00485	W00485	W00485
W00486	W00486	W00486	W00486
W00487	W00487	W00487	W00487
W00488	W00488	W00488	W00488
W00489	W00489	W00489	W00489
W00490	W00490	W00490	W00490
W00491	W00491	W00491	W00491
W00492	W00492	W00492	W00492
W00493	W00493	W00493	W00493
W00494	W00494	W00494	W00494
W00495	W00495	W00495	W00495
W00496	W00496	W00496	W00496
W00497	W00497	W00497	W00497
W00498	W00498	W00498	W00498
W00499	W00499	W00499	W00499
W00500	W00500	W00500	W00500



The map is for reference purposes only. It is not to be used for description or conveyance.

**Legend**

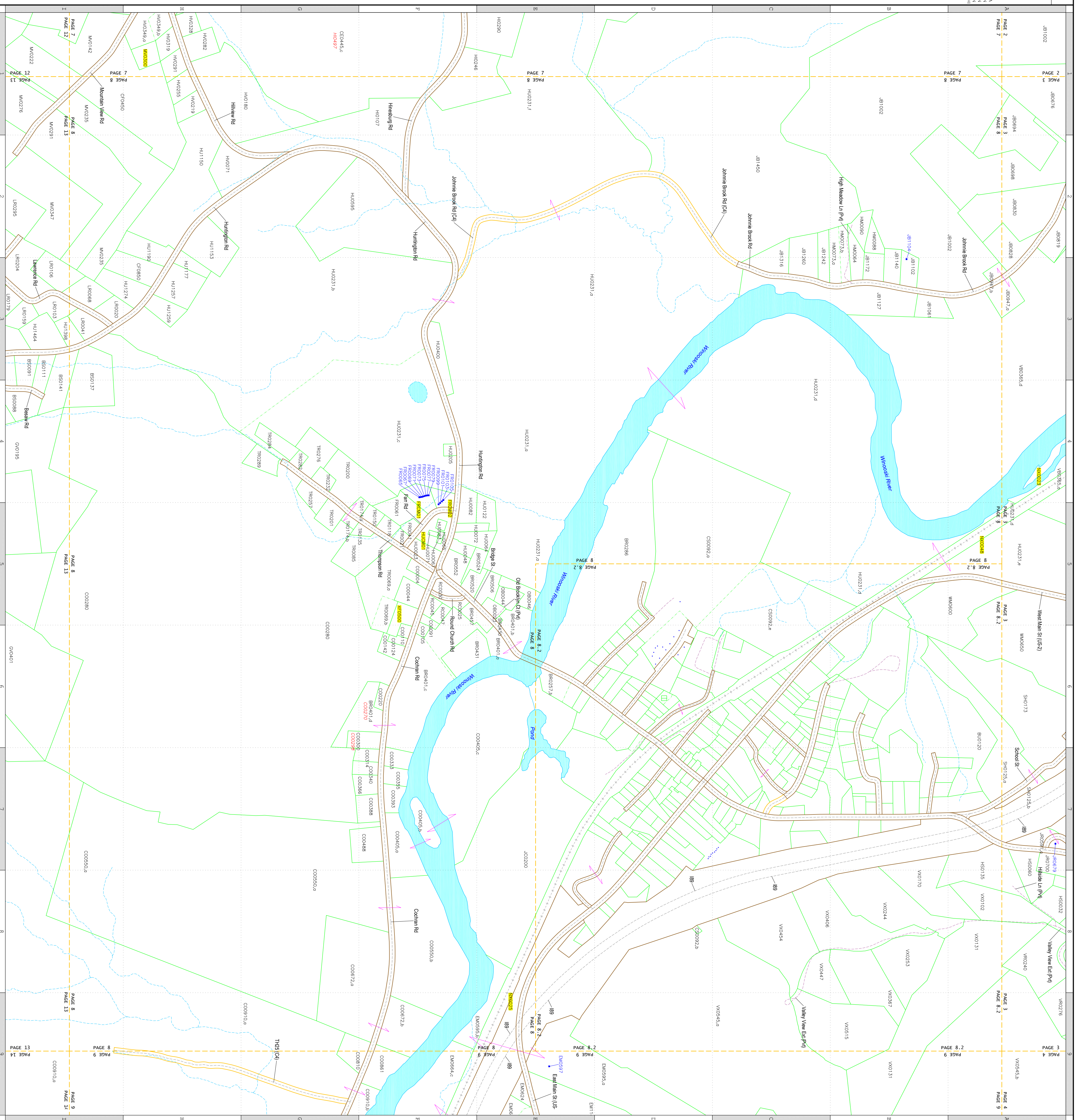
- Non-paved Lines:** Public Road Centerline, Stream Centerline, Stream Edge, Railroad Centerline, Z-track
- Submerged Lines:** Normal Submerged Line, Stream Centerline, Water Body Edge
- Parallel Lines:** Town Line, Submerged Line, Stream Centerline, Water Body Edge, Public Auto Road Edge, Private Road Centerline
- Property Codes:**
  - W00377: W00377
  - W00378: W00378
  - W00379: W00379
  - W00380: W00380
  - W00381: W00381
  - W00382: W00382
  - W00383: W00383
  - W00384: W00384
  - W00385: W00385
  - W00386: W00386
  - W00387: W00387
  - W00388: W00388
  - W00389: W00389
  - W00390: W00390
  - W00391: W00391
  - W00392: W00392
  - W00393: W00393
  - W00394: W00394
  - W00395: W00395
  - W00396: W00396
  - W00397: W00397
  - W00398: W00398
  - W00399: W00399
  - W00400: W00400
  - W00401: W00401
  - W00402: W00402
  - W00403: W00403
  - W00404: W00404
  - W00405: W00405
  - W00406: W00406
  - W00407: W00407
  - W00408: W00408
  - W00409: W00409
  - W00410: W00410
  - W00411: W00411
  - W00412: W00412
  - W00413: W00413
  - W00414: W00414
  - W00415: W00415
  - W00416: W00416
  - W00417: W00417
  - W00418: W00418
  - W00419: W00419
  - W00420: W00420
  - W00421: W00421
  - W00422: W00422
  - W00423: W00423
  - W00424: W00424
  - W00425: W00425
  - W00426: W00426
  - W00427: W00427
  - W00428: W00428
  - W00429: W00429
  - W00430: W00430
  - W00431: W00431
  - W00432: W00432
  - W00433: W00433
  - W00434: W00434
  - W00435: W00435
  - W00436: W00436
  - W00437: W00437
  - W00438: W00438
  - W00439: W00439
  - W00440: W00440
  - W00441: W00441
  - W00442: W00442
  - W00443: W00443
  - W00444: W00444
  - W00445: W00445
  - W00446: W00446
  - W00447: W00447
  - W00448: W00448
  - W00449: W00449
  - W00450: W00450
  - W00451: W00451
  - W00452: W00452
  - W00453: W00453
  - W00454: W00454
  - W00455: W00455
  - W00456: W00456
  - W00457: W00457
  - W00458: W00458
  - W00459: W00459
  - W00460: W00460
  - W00461: W00461
  - W00462: W00462
  - W00463: W00463
  - W00464: W00464
  - W00465: W00465
  - W00466: W00466
  - W00467: W00467
  - W00468: W00468
  - W00469: W00469
  - W00470: W00470
  - W004



The lot/lot owner for each shade code the owner from the graphic current to the most date. The acre is calculated from the map polygon. If a parcel contains multiple polygons, the acre value is the total acre, and the number enclosed in parentheses is the count of polygons in the parcel. If a parcel has no acre on the map, the acre is set to zero, and the code is set to blank.

Code	Owner	Code	Owner
BR0027	BR0027	BR0027	BR0027
BR0028	BR0028	BR0028	BR0028
BR0029	BR0029	BR0029	BR0029
BR0030	BR0030	BR0030	BR0030
BR0031	BR0031	BR0031	BR0031
BR0032	BR0032	BR0032	BR0032
BR0033	BR0033	BR0033	BR0033
BR0034	BR0034	BR0034	BR0034
BR0035	BR0035	BR0035	BR0035
BR0036	BR0036	BR0036	BR0036
BR0037	BR0037	BR0037	BR0037
BR0038	BR0038	BR0038	BR0038
BR0039	BR0039	BR0039	BR0039
BR0040	BR0040	BR0040	BR0040
BR0041	BR0041	BR0041	BR0041
BR0042	BR0042	BR0042	BR0042
BR0043	BR0043	BR0043	BR0043
BR0044	BR0044	BR0044	BR0044
BR0045	BR0045	BR0045	BR0045
BR0046	BR0046	BR0046	BR0046
BR0047	BR0047	BR0047	BR0047
BR0048	BR0048	BR0048	BR0048
BR0049	BR0049	BR0049	BR0049
BR0050	BR0050	BR0050	BR0050
BR0051	BR0051	BR0051	BR0051
BR0052	BR0052	BR0052	BR0052
BR0053	BR0053	BR0053	BR0053
BR0054	BR0054	BR0054	BR0054
BR0055	BR0055	BR0055	BR0055
BR0056	BR0056	BR0056	BR0056
BR0057	BR0057	BR0057	BR0057
BR0058	BR0058	BR0058	BR0058
BR0059	BR0059	BR0059	BR0059
BR0060	BR0060	BR0060	BR0060
BR0061	BR0061	BR0061	BR0061
BR0062	BR0062	BR0062	BR0062
BR0063	BR0063	BR0063	BR0063
BR0064	BR0064	BR0064	BR0064
BR0065	BR0065	BR0065	BR0065
BR0066	BR0066	BR0066	BR0066
BR0067	BR0067	BR0067	BR0067
BR0068	BR0068	BR0068	BR0068
BR0069	BR0069	BR0069	BR0069
BR0070	BR0070	BR0070	BR0070
BR0071	BR0071	BR0071	BR0071
BR0072	BR0072	BR0072	BR0072
BR0073	BR0073	BR0073	BR0073
BR0074	BR0074	BR0074	BR0074
BR0075	BR0075	BR0075	BR0075
BR0076	BR0076	BR0076	BR0076
BR0077	BR0077	BR0077	BR0077
BR0078	BR0078	BR0078	BR0078
BR0079	BR0079	BR0079	BR0079
BR0080	BR0080	BR0080	BR0080
BR0081	BR0081	BR0081	BR0081
BR0082	BR0082	BR0082	BR0082
BR0083	BR0083	BR0083	BR0083
BR0084	BR0084	BR0084	BR0084
BR0085	BR0085	BR0085	BR0085
BR0086	BR0086	BR0086	BR0086
BR0087	BR0087	BR0087	BR0087
BR0088	BR0088	BR0088	BR0088
BR0089	BR0089	BR0089	BR0089
BR0090	BR0090	BR0090	BR0090
BR0091	BR0091	BR0091	BR0091
BR0092	BR0092	BR0092	BR0092
BR0093	BR0093	BR0093	BR0093
BR0094	BR0094	BR0094	BR0094
BR0095	BR0095	BR0095	BR0095
BR0096	BR0096	BR0096	BR0096
BR0097	BR0097	BR0097	BR0097
BR0098	BR0098	BR0098	BR0098
BR0099	BR0099	BR0099	BR0099
BR0100	BR0100	BR0100	BR0100

Code	Owner	Code	Owner
BR0101	BR0101	BR0101	BR0101
BR0102	BR0102	BR0102	BR0102
BR0103	BR0103	BR0103	BR0103
BR0104	BR0104	BR0104	BR0104
BR0105	BR0105	BR0105	BR0105
BR0106	BR0106	BR0106	BR0106
BR0107	BR0107	BR0107	BR0107
BR0108	BR0108	BR0108	BR0108
BR0109	BR0109	BR0109	BR0109
BR0110	BR0110	BR0110	BR0110
BR0111	BR0111	BR0111	BR0111
BR0112	BR0112	BR0112	BR0112
BR0113	BR0113	BR0113	BR0113
BR0114	BR0114	BR0114	BR0114
BR0115	BR0115	BR0115	BR0115
BR0116	BR0116	BR0116	BR0116
BR0117	BR0117	BR0117	BR0117
BR0118	BR0118	BR0118	BR0118
BR0119	BR0119	BR0119	BR0119
BR0120	BR0120	BR0120	BR0120
BR0121	BR0121	BR0121	BR0121
BR0122	BR0122	BR0122	BR0122
BR0123	BR0123	BR0123	BR0123
BR0124	BR0124	BR0124	BR0124
BR0125	BR0125	BR0125	BR0125
BR0126	BR0126	BR0126	BR0126
BR0127	BR0127	BR0127	BR0127
BR0128	BR0128	BR0128	BR0128
BR0129	BR0129	BR0129	BR0129
BR0130	BR0130	BR0130	BR0130
BR0131	BR0131	BR0131	BR0131
BR0132	BR0132	BR0132	BR0132
BR0133	BR0133	BR0133	BR0133
BR0134	BR0134	BR0134	BR0134
BR0135	BR0135	BR0135	BR0135
BR0136	BR0136	BR0136	BR0136
BR0137	BR0137	BR0137	BR0137
BR0138	BR0138	BR0138	BR0138
BR0139	BR0139	BR0139	BR0139
BR0140	BR0140	BR0140	BR0140
BR0141	BR0141	BR0141	BR0141
BR0142	BR0142	BR0142	BR0142
BR0143	BR0143	BR0143	BR0143
BR0144	BR0144	BR0144	BR0144
BR0145	BR0145	BR0145	BR0145
BR0146	BR0146	BR0146	BR0146
BR0147	BR0147	BR0147	BR0147
BR0148	BR0148	BR0148	BR0148
BR0149	BR0149	BR0149	BR0149
BR0150	BR0150	BR0150	BR0150
BR0151	BR0151	BR0151	BR0151
BR0152	BR0152	BR0152	BR0152
BR0153	BR0153	BR0153	BR0153
BR0154	BR0154	BR0154	BR0154
BR0155	BR0155	BR0155	BR0155
BR0156	BR0156	BR0156	BR0156
BR0157	BR0157	BR0157	BR0157
BR0158	BR0158	BR0158	BR0158
BR0159	BR0159	BR0159	BR0159
BR0160	BR0160	BR0160	BR0160
BR0161	BR0161	BR0161	BR0161
BR0162	BR0162	BR0162	BR0162
BR0163	BR0163	BR0163	BR0163
BR0164	BR0164	BR0164	BR0164
BR0165	BR0165	BR0165	BR0165
BR0166	BR0166	BR0166	BR0166
BR0167	BR0167	BR0167	BR0167
BR0168	BR0168	BR0168	BR0168
BR0169	BR0169	BR0169	BR0169
BR0170	BR0170	BR0170	BR0170
BR0171	BR0171	BR0171	BR0171
BR0172	BR0172	BR0172	BR0172
BR0173	BR0173	BR0173	BR0173
BR0174	BR0174	BR0174	BR0174
BR0175	BR0175	BR0175	BR0175
BR0176	BR0176	BR0176	BR0176
BR0177	BR0177	BR0177	BR0177
BR0178	BR0178	BR0178	BR0178
BR0179	BR0179	BR0179	BR0179
BR0180	BR0180	BR0180	BR0180
BR0181	BR0181	BR0181	BR0181
BR0182	BR0182	BR0182	BR0182
BR0183	BR0183	BR0183	BR0183
BR0184	BR0184	BR0184	BR0184
BR0185	BR0185	BR0185	BR0185
BR0186	BR0186	BR0186	BR0186
BR0187	BR0187	BR0187	BR0187
BR0188	BR0188	BR0188	BR0188
BR0189	BR0189	BR0189	BR0189
BR0190	BR0190	BR0190	BR0190
BR0191	BR0191	BR0191	BR0191
BR0192	BR0192	BR0192	BR0192
BR0193	BR0193	BR0193	BR0193
BR0194	BR0194	BR0194	BR0194
BR0195	BR0195	BR0195	BR0195
BR0196	BR0196	BR0196	BR0196
BR0197	BR0197	BR0197	BR0197
BR0198	BR0198	BR0198	BR0198
BR0199	BR0199	BR0199	BR0199
BR0200	BR0200	BR0200	BR0200



**Legend**

**Non-paved Lines**

- Public Road Centerline
- Stream Centerline
- Stream Edge
- Raised Centerline
- Water Body Edge
- Zhok

**Subsided Lines**

- Normal Subsided Line
- Stream Centerline
- Water Body Edge

**Partial Lines**

- Town Line
- Stream Centerline
- Water Body Edge
- Public Auto Road Edge
- Stream Centerline
- Water Body Edge
- Private Road Centerline

**Property Codes**

The map contains 4 types of codes: parcel codes, subsided codes, stream codes, and point codes. A parcel code is used for a parcel with a single polygon. A subsided code is used for a parcel that is part of a larger polygon parcel. The code is in the same format as the parcel code with the addition of a letter. A stream code is used for a stream that is part of a larger stream polygon. The code is in the same format as the stream code with the addition of a letter. A point code is used for a point that is part of a larger polygon parcel. The code is in the same format as the parcel code with the addition of a letter. A point code is used for a point that is part of a larger stream polygon. The code is in the same format as the stream code with the addition of a letter.

**Scale**

0 400 Feet

**Town of Richmond**

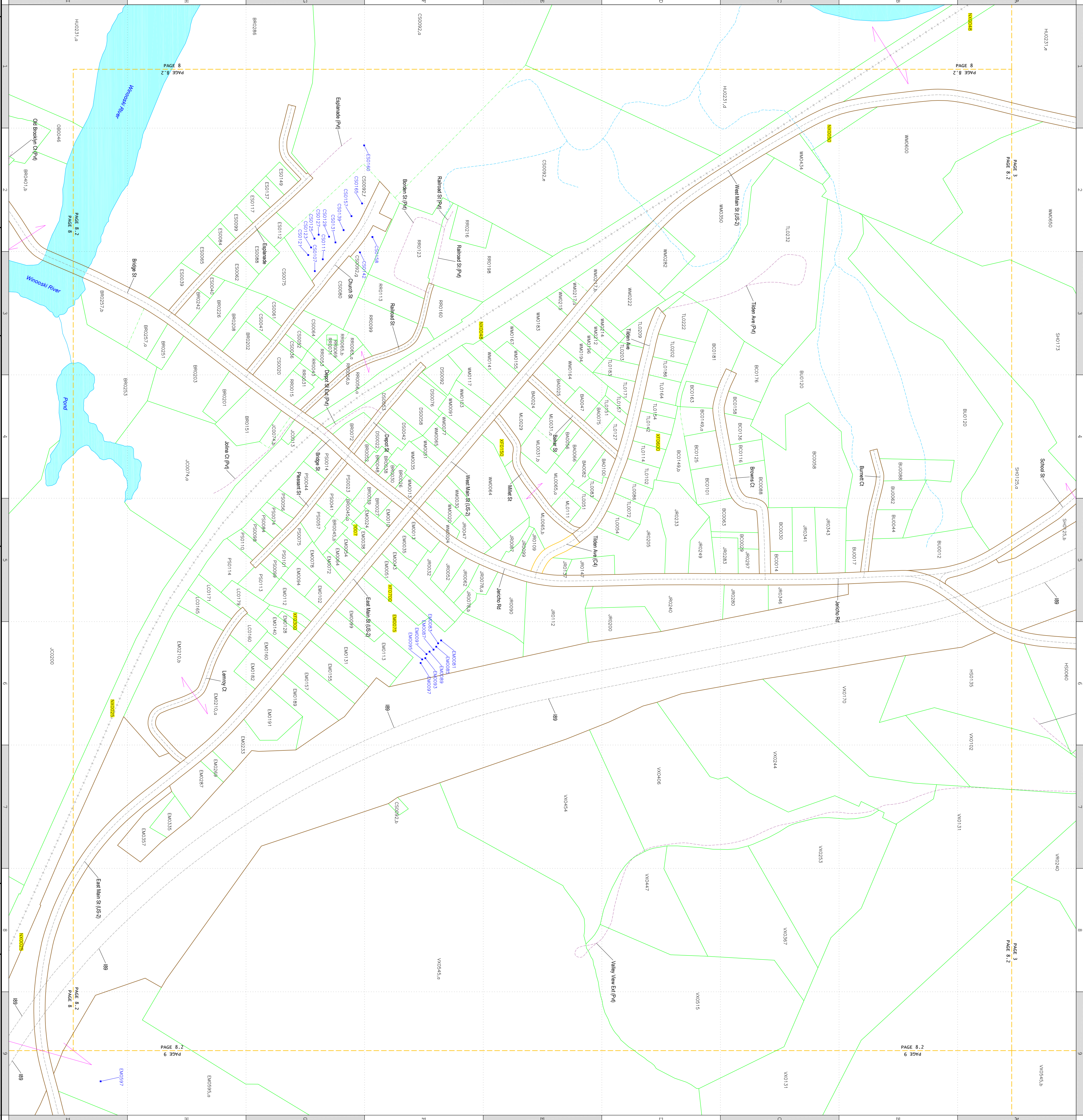
**Page 8**

June 1, 2017



The lot/burden goes to each within make code the owner from the grantee current to the most date. The acre is calculated from the map polygon. If a property has multiple polygons, the acre value is the total acre, and the number enclosed in parentheses is the count of polygons in the parcel. If a property has no data, the acres are set to zero, and the code is set to blank.

Code	Owner	Code	Owner
B00024	BENEFITVILLE, LLC	W00554	WOOD SERVICE A
B00025	BENEFITVILLE, LLC	W00555	WOOD SERVICE A
B00026	BENEFITVILLE, LLC	W00556	WOOD SERVICE A
B00027	BENEFITVILLE, LLC	W00557	WOOD SERVICE A
B00028	BENEFITVILLE, LLC	W00558	WOOD SERVICE A
B00029	BENEFITVILLE, LLC	W00559	WOOD SERVICE A
B00030	BENEFITVILLE, LLC	W00560	WOOD SERVICE A
B00031	BENEFITVILLE, LLC	W00561	WOOD SERVICE A
B00032	BENEFITVILLE, LLC	W00562	WOOD SERVICE A
B00033	BENEFITVILLE, LLC	W00563	WOOD SERVICE A
B00034	BENEFITVILLE, LLC	W00564	WOOD SERVICE A
B00035	BENEFITVILLE, LLC	W00565	WOOD SERVICE A
B00036	BENEFITVILLE, LLC	W00566	WOOD SERVICE A
B00037	BENEFITVILLE, LLC	W00567	WOOD SERVICE A
B00038	BENEFITVILLE, LLC	W00568	WOOD SERVICE A
B00039	BENEFITVILLE, LLC	W00569	WOOD SERVICE A
B00040	BENEFITVILLE, LLC	W00570	WOOD SERVICE A
B00041	BENEFITVILLE, LLC	W00571	WOOD SERVICE A
B00042	BENEFITVILLE, LLC	W00572	WOOD SERVICE A
B00043	BENEFITVILLE, LLC	W00573	WOOD SERVICE A
B00044	BENEFITVILLE, LLC	W00574	WOOD SERVICE A
B00045	BENEFITVILLE, LLC	W00575	WOOD SERVICE A
B00046	BENEFITVILLE, LLC	W00576	WOOD SERVICE A
B00047	BENEFITVILLE, LLC	W00577	WOOD SERVICE A
B00048	BENEFITVILLE, LLC	W00578	WOOD SERVICE A
B00049	BENEFITVILLE, LLC	W00579	WOOD SERVICE A
B00050	BENEFITVILLE, LLC	W00580	WOOD SERVICE A
B00051	BENEFITVILLE, LLC	W00581	WOOD SERVICE A
B00052	BENEFITVILLE, LLC	W00582	WOOD SERVICE A
B00053	BENEFITVILLE, LLC	W00583	WOOD SERVICE A
B00054	BENEFITVILLE, LLC	W00584	WOOD SERVICE A
B00055	BENEFITVILLE, LLC	W00585	WOOD SERVICE A
B00056	BENEFITVILLE, LLC	W00586	WOOD SERVICE A
B00057	BENEFITVILLE, LLC	W00587	WOOD SERVICE A
B00058	BENEFITVILLE, LLC	W00588	WOOD SERVICE A
B00059	BENEFITVILLE, LLC	W00589	WOOD SERVICE A
B00060	BENEFITVILLE, LLC	W00590	WOOD SERVICE A
B00061	BENEFITVILLE, LLC	W00591	WOOD SERVICE A
B00062	BENEFITVILLE, LLC	W00592	WOOD SERVICE A
B00063	BENEFITVILLE, LLC	W00593	WOOD SERVICE A
B00064	BENEFITVILLE, LLC	W00594	WOOD SERVICE A
B00065	BENEFITVILLE, LLC	W00595	WOOD SERVICE A
B00066	BENEFITVILLE, LLC	W00596	WOOD SERVICE A
B00067	BENEFITVILLE, LLC	W00597	WOOD SERVICE A
B00068	BENEFITVILLE, LLC	W00598	WOOD SERVICE A
B00069	BENEFITVILLE, LLC	W00599	WOOD SERVICE A
B00070	BENEFITVILLE, LLC	W00600	WOOD SERVICE A

















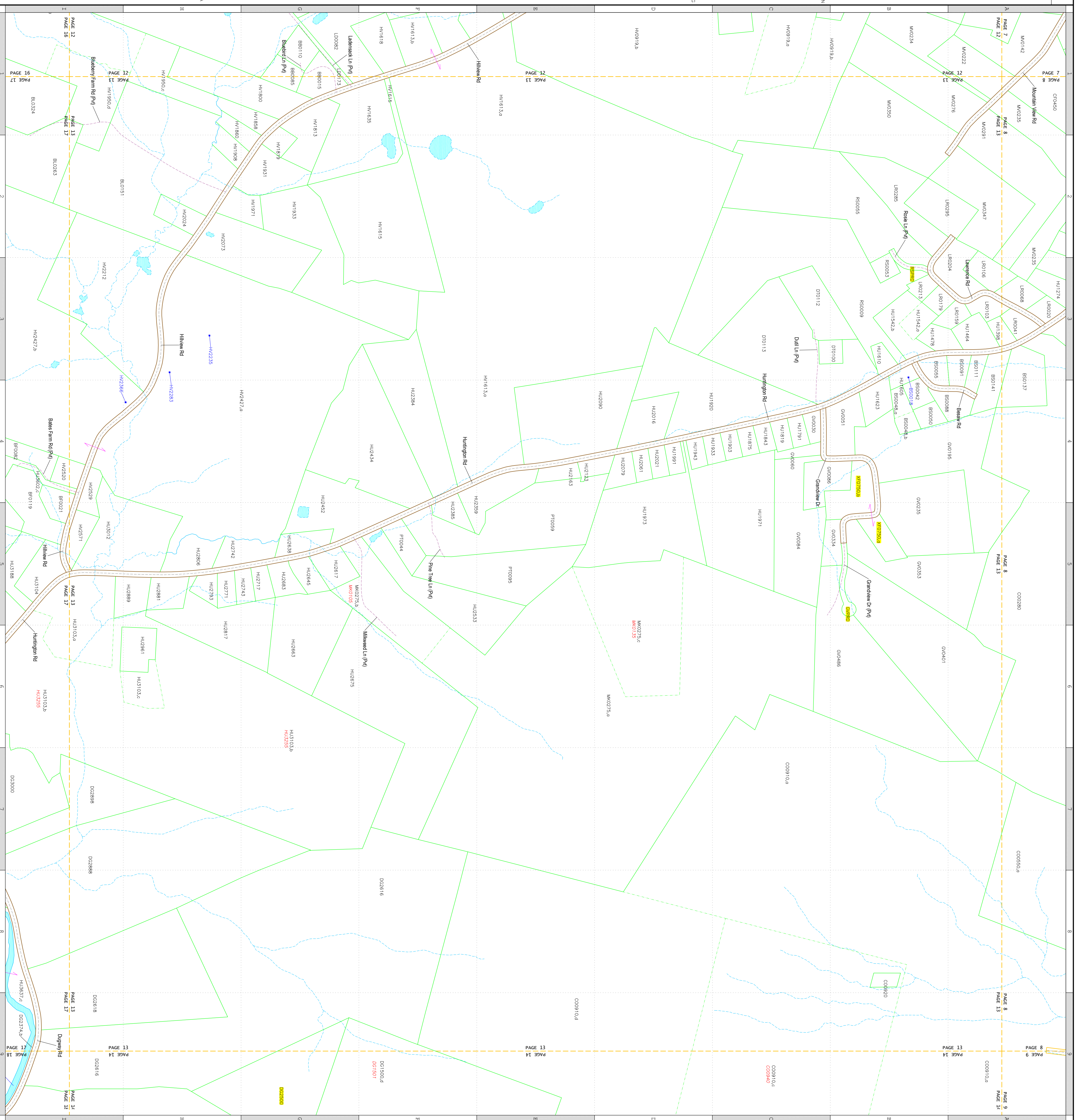




The list below gives for each whole map code the owner from the previous current to the most date. The acre is calculated from the map polygon. If a parcel contains multiple polygons, the acre value is the total acre, and the number indicates in parentheses is the count of polygons in the parcel. If a property has no land, the acres are not shown, and the code is in blue.

Code	Acres	Owner
8B0205	0.1	BRUCE, EMMA R & JOHN T
8B0206	1.62	BRUCE, EMMA R & JOHN T
8B0207	1.75	LENS, GREG & KELSEY
8B0208	1.4	SAINI STEVEN C
8B0209	1.4	SAINI STEVEN C
8B0210	1.4	SAINI STEVEN C
8B0211	2.62	SAINI STEVEN C
8B0212	20.83	GRAY EDEE FARM LLC
8B0213	12	DOONER, ANTHONY W & PARSON, COLEEN M
8B0214	10.10	DOONER, ANTHONY W & PARSON, COLEEN M
8B0215	10.10	DOONER, ANTHONY W & PARSON, COLEEN M
8B0216	1.07	COLE, THOMAS J
8B0217	1.51(2)	ALEN, DONALD P, JR & SALLY A
8B0218	0.82	ALEN, DONALD P, JR & SALLY A
8B0219	0.82	ALEN, DONALD P, JR & SALLY A
8B0220	1.04	BRIGHT, CARL & JEAN SUE, A
8B0221	1.62	WILLEN, RAYMOND P & CARLA J
8B0222	0.10	KERDIN, THEODORE W & CARMEN U
8B0223	4.4	FOUNTAIN, LAURENCE E & PATRICK A
8B0224	1.61	THOMPSON, LAURENCE E & PATRICK A
8B0225	1.61	THOMPSON, LAURENCE E & PATRICK A
8B0226	205.08(2)	PRESTON, BETTY & WILLIAM D
8B0227	83.55(3)	BARRETT, FREDERICK W & MICHAEL J
8B0228	37	BARRETT, FREDERICK W & MICHAEL J
8B0229	37	BARRETT, FREDERICK W & MICHAEL J
8B0230	37	BARRETT, FREDERICK W & MICHAEL J
8B0231	37	BARRETT, FREDERICK W & MICHAEL J
8B0232	37	BARRETT, FREDERICK W & MICHAEL J
8B0233	37	BARRETT, FREDERICK W & MICHAEL J
8B0234	37	BARRETT, FREDERICK W & MICHAEL J
8B0235	37	BARRETT, FREDERICK W & MICHAEL J
8B0236	37	BARRETT, FREDERICK W & MICHAEL J
8B0237	37	BARRETT, FREDERICK W & MICHAEL J
8B0238	37	BARRETT, FREDERICK W & MICHAEL J
8B0239	37	BARRETT, FREDERICK W & MICHAEL J
8B0240	37	BARRETT, FREDERICK W & MICHAEL J
8B0241	37	BARRETT, FREDERICK W & MICHAEL J
8B0242	37	BARRETT, FREDERICK W & MICHAEL J
8B0243	37	BARRETT, FREDERICK W & MICHAEL J
8B0244	37	BARRETT, FREDERICK W & MICHAEL J
8B0245	37	BARRETT, FREDERICK W & MICHAEL J
8B0246	37	BARRETT, FREDERICK W & MICHAEL J
8B0247	37	BARRETT, FREDERICK W & MICHAEL J
8B0248	37	BARRETT, FREDERICK W & MICHAEL J
8B0249	37	BARRETT, FREDERICK W & MICHAEL J
8B0250	37	BARRETT, FREDERICK W & MICHAEL J
8B0251	37	BARRETT, FREDERICK W & MICHAEL J
8B0252	37	BARRETT, FREDERICK W & MICHAEL J
8B0253	37	BARRETT, FREDERICK W & MICHAEL J
8B0254	37	BARRETT, FREDERICK W & MICHAEL J
8B0255	37	BARRETT, FREDERICK W & MICHAEL J
8B0256	37	BARRETT, FREDERICK W & MICHAEL J
8B0257	37	BARRETT, FREDERICK W & MICHAEL J
8B0258	37	BARRETT, FREDERICK W & MICHAEL J
8B0259	37	BARRETT, FREDERICK W & MICHAEL J
8B0260	37	BARRETT, FREDERICK W & MICHAEL J
8B0261	37	BARRETT, FREDERICK W & MICHAEL J
8B0262	37	BARRETT, FREDERICK W & MICHAEL J
8B0263	37	BARRETT, FREDERICK W & MICHAEL J
8B0264	37	BARRETT, FREDERICK W & MICHAEL J
8B0265	37	BARRETT, FREDERICK W & MICHAEL J
8B0266	37	BARRETT, FREDERICK W & MICHAEL J
8B0267	37	BARRETT, FREDERICK W & MICHAEL J
8B0268	37	BARRETT, FREDERICK W & MICHAEL J
8B0269	37	BARRETT, FREDERICK W & MICHAEL J
8B0270	37	BARRETT, FREDERICK W & MICHAEL J
8B0271	37	BARRETT, FREDERICK W & MICHAEL J
8B0272	37	BARRETT, FREDERICK W & MICHAEL J
8B0273	37	BARRETT, FREDERICK W & MICHAEL J
8B0274	37	BARRETT, FREDERICK W & MICHAEL J
8B0275	37	BARRETT, FREDERICK W & MICHAEL J
8B0276	37	BARRETT, FREDERICK W & MICHAEL J
8B0277	37	BARRETT, FREDERICK W & MICHAEL J
8B0278	37	BARRETT, FREDERICK W & MICHAEL J
8B0279	37	BARRETT, FREDERICK W & MICHAEL J
8B0280	37	BARRETT, FREDERICK W & MICHAEL J
8B0281	37	BARRETT, FREDERICK W & MICHAEL J
8B0282	37	BARRETT, FREDERICK W & MICHAEL J
8B0283	37	BARRETT, FREDERICK W & MICHAEL J
8B0284	37	BARRETT, FREDERICK W & MICHAEL J
8B0285	37	BARRETT, FREDERICK W & MICHAEL J
8B0286	37	BARRETT, FREDERICK W & MICHAEL J
8B0287	37	BARRETT, FREDERICK W & MICHAEL J
8B0288	37	BARRETT, FREDERICK W & MICHAEL J
8B0289	37	BARRETT, FREDERICK W & MICHAEL J
8B0290	37	BARRETT, FREDERICK W & MICHAEL J
8B0291	37	BARRETT, FREDERICK W & MICHAEL J
8B0292	37	BARRETT, FREDERICK W & MICHAEL J
8B0293	37	BARRETT, FREDERICK W & MICHAEL J
8B0294	37	BARRETT, FREDERICK W & MICHAEL J
8B0295	37	BARRETT, FREDERICK W & MICHAEL J
8B0296	37	BARRETT, FREDERICK W & MICHAEL J
8B0297	37	BARRETT, FREDERICK W & MICHAEL J
8B0298	37	BARRETT, FREDERICK W & MICHAEL J
8B0299	37	BARRETT, FREDERICK W & MICHAEL J
8B0300	37	BARRETT, FREDERICK W & MICHAEL J

This map is for zoning purposes only. It is not to be used for description or conveyance.



**Non-paved Lines**

- Public Road Centerline
- Stream Centerline
- Stream Edge
- Zhook

**Subsided Lines**

- Normal Subsided Line
- Stream Centerline
- Water Body Edge

**Parallel Lines**

- Town Line
- Public Auto Road Edge
- Private Road Centerline

**Property Codes**

722331  
722332  
722333  
722334  
722335  
722336  
722337  
722338  
722339  
722340  
722341  
722342  
722343  
722344  
722345  
722346  
722347  
722348  
722349  
722350  
722351  
722352  
722353  
722354  
722355  
722356  
722357  
722358  
722359  
722360  
722361  
722362  
722363  
722364  
722365  
722366  
722367  
722368  
722369  
722370  
722371  
722372  
722373  
722374  
722375  
722376  
722377  
722378  
722379  
722380  
722381  
722382  
722383  
722384  
722385  
722386  
722387  
722388  
722389  
722390  
722391  
722392  
722393  
722394  
722395  
722396  
722397  
722398  
722399  
722400

**Scale**

0 1 2 3 4 5 6 7 8 9 10

0 100 200 300 400 Feet

**Town of Richmond**

June 1, 2017

**Page 13**























